

★

TECHNICAL MANUAL  
for  
TRANSMITTING ANTENNA DISSIPATOR  
MODEL TER-5000/300U

**MASTER COPY**  
**DO NOT DESTROY**



THE TECHNICAL MATERIEL CORPORATION  
MAMARONECK, N. Y. OTTAWA, CANADA

★

DATE 2/27/63

SHEET 3 OF 5

TMC SPECIFICATION NO. S-749

A.A.  
COMPILED

*J.P.*  
CHECKED

TITLE: TEST PROCEDURE FOR THE MODEL TER-5000-300Ω

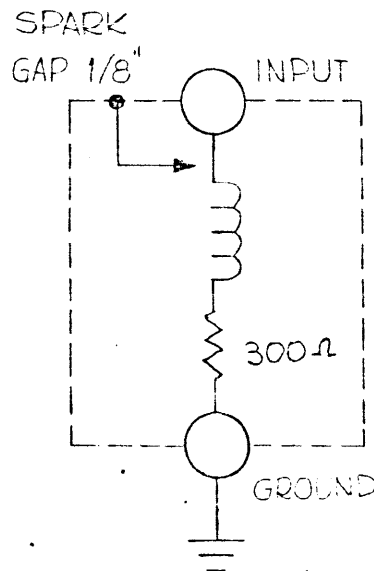
APPROVED

PURPOSE AND DESCRIPTION:

Models TER-5000 are resistive terminations capable of dissipating R.F. energy from D.C. to 30 megacycles. The units are housed in fiberglass reinforced plastic cases for pole or frame mounting. The case provides protection from the elements and is fitted with screened vent ports for proper air circulation. All metals used are non-ferrous, insulation is of teflon and the entire assembly is protected by a silicone spray. The resistors are of a new design providing a minimum of reactance. The entire resistor assembly is shock mounted in a plastic case and may be quickly removed for service. The resistor characteristics are such that they may be instantly brought up to full rated output power at minus 40 degrees centigrade without harm.

TEST EQUIPMENT REQUIRED:

1. Ohmmeter: Simpson Model 260 or Equivalent.
2. Ruler: 6 inches.
3. GPT-10K.



SCHEMATIC

DATE 2/27/63

SHEET 4 OF 5

TMC SPECIFICATION NO. S-749

A.A.  
COMPILED

*NP*  
CHECKED

TITLE: TEST PROCEDURE FOR THE MODEL TER-500-300U

APPROVED

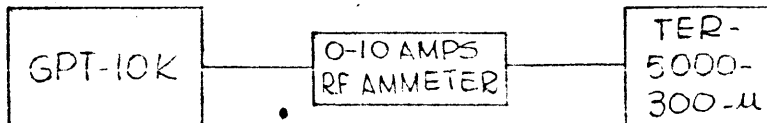
TEST INSTRUCTIONS:

ELECTRICAL AND MECHANICAL:

1. Check resistance of the resistors. The resistance should be 300 OHMS  $\pm$  10%.
2. Check the spacing of the spark gap. This should be set for 1/8" spacing.
3. Inspect resistors for any sign of damage in installation.
4. Check all mechanical connections to see that they are secure.
5. Check over all unit for any missing hardware.

POWER TEST:

Connect the TER-5000-300U to the unbalanced output of a GPT-10K through a 0-10 amp. R.F. ammeter. Tune the GPT-10K to 8mc. and apply drive until ammeter reads 4 amps. Apply power for 10 minutes.



PART NO.	DESCRIPTION ELECTRICAL/MECHANICAL	ITEM LOCATION			QTY. PER UNIT	REFERENCE SYMBOLS	REMARKS
		USED ON ASSEMBLY	USED TO MOUNT	QTY. PER USED TO MOUNT			
LWS10MRN	WASH., LK, SPLIT	A3130			42		
LWS25MRN	WASH., LK, SPLIT	A3130			22		
LWS50MRN	WASH., LK, SPLIT	A3130			13		
MS2665-7	LEAD, ELEC, GRD	A3130			2		
MS2665-9	LEAD, ELEC, COIL	A3130			1		TOP
MS2665-10	LEAD, ELEC, RES.	A3130			4		BOTTOM
MS3108	FRAME, MAIN	A3130			1		
MS3109	PL, SUPPORT, RES.	A3130			1		
MS3110	MLDG, CORNER, REAR	A3130			2		
MS3111	MLDG, CORNER, TOP	A3130			2		
MS3112-1	MLDG, TOP, SD-REAR	A3130			3		
MS3112-2	MOLDING, TOP, DOOR	A3130			1		
MS3114	LEAD, ELEC, COIL	A3130			1		BOTTOM
NP176-18	PLATE, ID	A3130			1		
NP195	PLATE, WARNING	A3130			1		
NS123	INS, BOWL	A3130			1		
NT129-1032-6	NUT, PLN, SPLINE	MS3108			98		
NT139SF1-15	INSERT, SCR THD	PX702			40		

THE TECHNICAL MATERIEL CORPORATION

MAMARONECK, NEW YORK

PART NO.	DESCRIPTION ELECTRICAL/MECHANICAL	ITEM LOCATION			QTY. PER UNIT	REFERENCE SYMBOLS	REMARKS
		USED ON ASSEMBLY	USED TO MOUNT	QTY. PER USED TO MOUNT			
NTC0832BNTL	NUT, PIN, CAP	A3130		10			
NTH0348BN6	NUT, PIN, HEX	A3130		20			
NTH0440BN6	NUT, PIN, HEX	A3130		8			
NTH1032BN12	NUT, PIN, HEX	A3130		8			
NTH2520BN14	NUT, PIN, HEX	A3130		12			
NTH5013BN24	NUT, PIN, HEX	A3130		8			
NTH5020BN24	NUT, PIN, HEX	A3130		5			
NTH5020BR24	NUT, PIN, HEX	A3131		1			
PM430	ELECTRODE, SPARK	A3130		1			
PM432	ELECTRODE, SPARK	A3130		1			
PM834-1	RETAINER, SPRING	A3130		14			
PX695	PANEL, SIDE	A3130		2			
PX696	PANEL, REAR	A3130		1			
PX697	DOOR, FRONT	A3130		1			
PX698	PANEL, TOP	A3130		4			
PX699	COVER, TOP	A3130		1			
PX700-1	PL, TOP, RES. RETG	A3130		1			
PX700-2	PL, TOP, RES.	A3130		1			
PX701	INS, SUPPORT, TOP	A3130		2			

PART NO.	DESCRIPTION ELECTRICAL/MECHANICAL	ITEM LOCATION			QTY. PER UNIT	REFERENCE SYMBOLS	REMARKS
		USED ON ASSEMBLY	USED TO MOUNT	QTY. PER USED TO MOUNT			
PX702	STIFFENER, TOP	A3130			4		
PX703	SUPPORT, BOWL	A3130			1		
PX845-125	INS SLVG, SHRINK	A3132			36		
RR132-1	RES., FXD, GLASS	A3130			1	R1	
RX119	PAD, CUSH	A3130			4		
SCBP0440BN5	SCR, MACH	A3130			8		
SCBP0632BN4	SCR, MACH	A3130			1		
SCBP1032BN8	SCR, MACH	A3130			104		
SCBP1032BN12	SCR, MACH	A3130			2		
SCBP1032BN16	SCR, MACH	A3130			24		
SCBP1032BN20	SCR, MACH	A3130			4		
SCFP0348BN6	SCR, MACH	A3130			20		
SCFP0832BN5	SCR, MACH	A3130			10		
SCFP1032BN8	SCR, MACH	A3130			16		
SCFP2520BN10	SCR, MACH	A3130			1		
SCFP2520BN16	SCR, MACH	A3130			4		
SCHH2520BN12	BOLT, MACH	A3130			10		
SCHH2520BN16	BOLT, MACH	A3130			1		
SCHH2520BN24	BOLT, MACH	A3130			6		

THE TECHNICAL MATERIAL CORPORATION

MAMARONECK, NEW YORK

PART NO.	DESCRIPTION ELECTRICAL/MECHANICAL	ITEM LOCATION			QTY. PER UNIT	REFERENCE SYMBOLS	REMARKS
		USED ON ASSEMBLY	USED TO MOUNT	QTY. PER USED TO MOUNT			
SCHH5013BN36	BOLT, MACH	A3130		8			
SCREENING	SCRN, FBRGL, 16MSH	WD132		1			18X18
SM2520BN3.500	STUD, CONT THD	A3130		1			
SP127-1	SPRING, HEL, COMPR	A3130		10			
SP127-2	SPRING, HEL, COMPR	A3130		4			
TE106	TERM., LUG-SCR	A3130		2			
TE141-4	TERM., LUG-NO. 10	A3132		2			
TU100-2S	TUBE, COP-SOFT	A3132		37			
WD132	SUPPORT, BASE	A3130		1			
WOOD	WOOD, CEDAR, 2X4	WD132		2			13-1/2LG
		WD132		2			31-1/2LG

MATERIAL LIST /  
NUMERICAL PARTS LIST

REV. A MODEL: TER-5000-300U SHEET 6 OF 9

PART NO.	DESCRIPTION SUPP ASSY/REF DWGS	ITEM LOCATION			QTY. PER UNIT	REFERENCE SYMBOLS	REMARKS
		USED ON ASSEMBLY	USED TO MOUNT	QTY. PER USED TO MOUNT			

A3130	FINAL ASSY	TER-5000		1		
A3131	ANT. STUD ASSY	A3130		1		
CL308	COIL, RF, FXD	A3130		1	L1	#A3132

THE TECHNICAL MATERIEL CORPORATION MAMARONECK, NEW YORK