

## ENGINEERING MODIFICATION NOTICE (CANADA)

CEMN NO. 1050

DATE 16 AUG 71

TMC (Canada) LTD  
OTTAWA ONTARIO

SHEET 1 OF 2

MODEL AFFECTED: STE-5

LCR NO.

SECTION AFFECTED: CHASSIS

ORIGINATOR: L. BROWN

APPROVAL: *off*

FINAL APPROVAL:

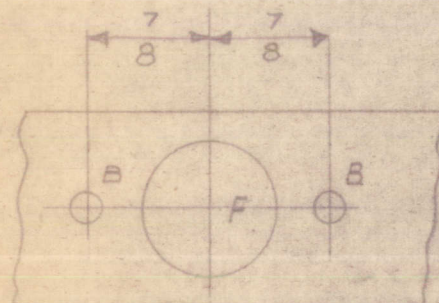
## DISTRIBUTION

## DOCUMENTS AFFECTED

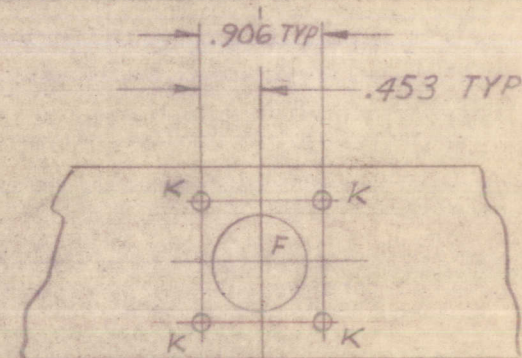
DEPT.	CEMN	DOC.	SIGN	DEPT.	CEMN	DOC.	SIGN	TYPE:	DWG <input checked="" type="checkbox"/>	LIST	NPL <input type="checkbox"/>	ML <input type="checkbox"/>	SPEC. <input type="checkbox"/>
ENG. CO-ORD				STOCK & INV.				DOCUMENT NO.			REV.	CHD.	
ENG. STDS.				QUAL. ASSUR.				LD10271			A	LB	
ENG. ADMIN.				MASTER FILE 0				MS19828			A	LB	
PURCHASING				MASTER FILE 1				CK10525			C	LB	
METHODS				MASTER FILE 2									
PROD. PLANNING				MASTER FILE 3									
DATA CONTROL													
MATL. CONTROL													

## DESCRIPTION

CHANGE PICTORIALLY



FROM



TO

CHANGE HOLE DATA TABLE AS FOLLOWS  
 HOLE B FROM 6 REQ TO 4 REQ  
 HOLE F FROM 1 1/4 DIA TO .937 DIA  
 ADD K HOLE .140 DIA 4 REQ

## REASON FOR CHANGE

 TO AGREE WITH CEMN NO.

PERTAINING TO:

 ERROR

OTHER: TO ALLOW FOR STANDARDIZATION OF POWER CABLE

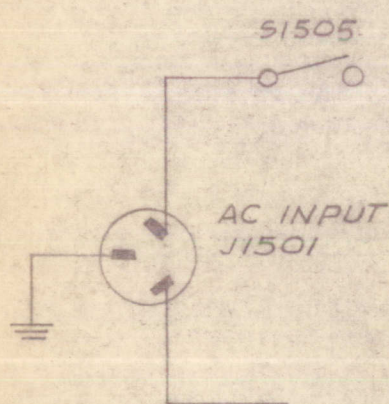
DISPOSITION OF STOCK	DEplete <input type="checkbox"/>	DISCARD <input type="checkbox"/>	MODIFY <input type="checkbox"/>	CONFORMS. <input type="checkbox"/>	NO STOCK <input checked="" type="checkbox"/>	NOT AFFECTED <input type="checkbox"/>
	REMARKS					
PRICE CHANGE	NONE <input type="checkbox"/>	INCREASED BY			DECREASED BY	
MODIFICATION EFFECTIVE	IMMEDIATELY (ALL NEW PARTS) <input checked="" type="checkbox"/>	SPECIFIC DATE _____				REMARKS
	NEXT PROD. RUN <input type="checkbox"/>	SERIAL NO. _____ MFGR. NO. _____ JOB NO. _____				
AFFECTED SUPPORTING DOCUMENTS (ENG. INFO.)	STATUS	LIST	ASSY	SCHEM	SPEC.	REMARKS
	CHGD.					
	CEMN NO.					
	N/A					
	CONF.					

DESCRIPTION (CONT.)

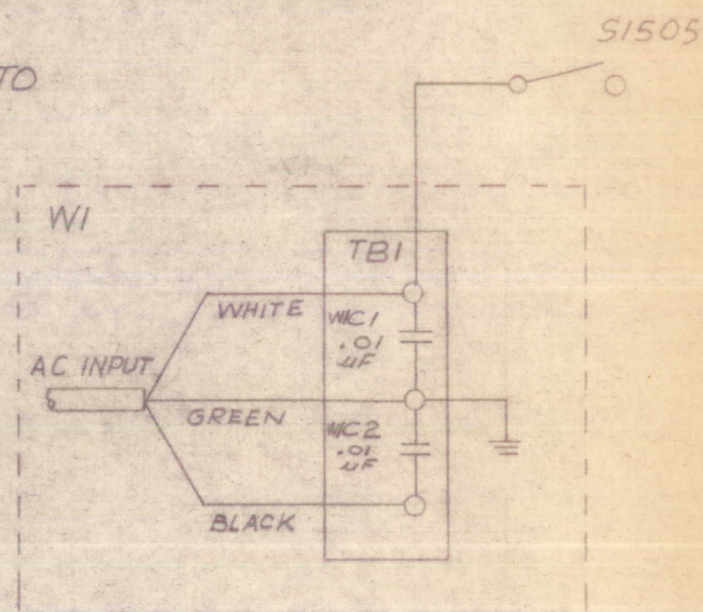
CHANGE MARKING CHASSIS (LD10271) PICTORIALY TO AGREE  
WHITH CHANGES MADE TO CHASSIS (MS10828)

CHANGE SCHEMATIC CK10525 AS SHOWN BELOW

FROM



TO



**USED ON  
MODEL-**

STE-5

**FOR**

**MODEL** AX10036

**TITLE** \_\_\_\_\_

**LAST SYMBOLS**

**CONSISTS OF  
SUPPORTING LISTS**

- A10545-7 PC BD, PWR SUP
- A10540-5 PC BD, XMTR, AF
- A10603-5 PC BD, XMTR, IF
- A10598-5 PC BD, AUDIO/PREAMP/CW OSC

**MISSING SYMBOLS**

REV.	SHEET(S)	DATE	APPR.
I	12 Sheets	6/12/73	

**COMPILED** \_\_\_\_\_

**CHECKED** \_\_\_\_\_

**KEY PUNCHED** \_\_\_\_\_

**ENGINEERING JOB ORDER  
# E \_\_\_\_\_**

**§ FOR SPECIAL NOTES,  
REFER TO S1200.**

PART NO.	DESCRIPTION	ITEM LOCATION		QTY PER ASSY	REFERENCE SYMBOLS	REMARKS
		USED ON ASSEMBLY	USED TO MOUNT			
A10540-5	PC BD, XMTR, AF	AX10036		1		
A10545-7	PC BD, PWR, SUP	AX10036		1		
A10598-5	PC BD, AU/PA/CW	AX10036		1		
A10603-5	PC BD, XMTR, IF	AX10036		1		
BM10548-2	PWR SUP, REG	AX10036		1		
BM10633	PNL ASSY, FR	AX10036		1		
BM10634	CHAS, ASSY, MN	AX10036		1		
CA10503	CBL, JUMPER	AX10036		2		
CH10154	CHART UNIT BKN	AX10036		1		
FS109-3	RING, RETAINING	AX10036	KS10763	4		
FS110-1	STUD, TURNLOCK	AX10036	HS10763	4		
HS10763	COV, TOP	AX10036		1		
RC07GF104J	RES. FXD. COMP	"		1	R1508	
RC20CF103J	RES, FXD, COMP	AX10036		1	R1507	
RC20CF392J	RES, FXD, COMP	AX10036		1	R1506	
NC						
TE104-2	TERM., LUG-LKG	AX10036	A10598-5	1		
			A10603-5	2		
				3		

THE TECHNICAL MATERIEL CORPORATION  
 MARRONCK, NEW YORK

LIST SECTION

REV	NEXT ASSY:	PART NO.	QTY PER NEXT ASSY:	ASSY LEVEL:	ASSY DESC:	ITEM LOCATION		QTY PER U/T/M	QTY PER ASSY	REFERENCE SYMBOLS	REMARKS
						USED ON ASSEMBLY	USED TO MOUNT				
	AX10036		1	1		PNL ASSY, PNL					
	ID10270/MS10827	PNL, FR				BMA10633		1	1		
	MS10827	PNL, FR				ID10270/MS10827		1	1		
	BT110-7	LAMP, INCAND				BMA10633		1	1	DS1501	
	FS121-2	STUD, SNAPSLIDE				BMA10633		2	2		
	JJ212	CONN, RECP, PNL				BMA10633		1	1	J1504	
	MP123-3FB	KNOB				BMA10633		6	6		
	NP10147-3	NAMEPLATE				BMA10633		1	1		
	PX104-1-034	INS SLVG				BMA10633	SW10074	4	4		
	RVA4NAYSAL03ATY	RES, VAR-COMP				BMA10633		1	1	R1501	
	RVA4NAYSAS01ATY	RES, VAR-COMP				BMA10633		1	1	R1502	
	RVA4NBYSAS02ATY	RES, VAR-COMP				BMA10633		1	1	R1503, S1505	
	SW10075	SW, ROTARY-TAP				BMA10633		2	2	S1501, 1502	
	SW10074	SW, ROTARY-TAP				BMA10633		1	1	S1503	
	TE111-2	TERM., LUG				BMA10633	R1501	1	1		
							R1502	2	2		
	TS153-5	LIGHT, IND, WHT				BMA10633		1	1	XDS1501	
	WL100-6	WIRE, ELEC BUSS				BMA10633	SW10074	3	3		

TMC (Canada) Limited

Ottawa, Ontario

AX10036  
 PNL ASSY, PNL  
 USED ON SECTION:  
 ASSY SHEET 1 of 1

PART NO.

DESCRIPTION

ITEM LOCATION

QTY. PER ASSY

REFERENCE SYMBOLS

REMARKS

PART NO.	DESCRIPTION	QTY PER NEXT ASSY:	ASSY LEVEL:	ASSY DESC:	ITEM LOCATION			QTY. PER ASSY	REFERENCE SYMBOLS	REMARKS
					USED ON ASSEMBLY	USED TO MOUNT	QTY PER U/T/M			
MS10762	BRKT, MNG	1					1			
TS166-S1	SOC, SCCOND, DEV				BMA105/8-2		2	XG1501, 1502		
2N350A	TRANSISTOR				BMA105/8-2		3	XG1503		
2N3616	TRANSISTOR						2	Q1501, 1502		
							1	Q1503		



PART NO.	DESCRIPTION	ITEM LOCATION		QTY PER U/T/M	QTY PER ASSY.	REFERENCE SYMBOLS	REMARKS
		USED ON ASSEMBLY	USED TO MOUNT				
MS10706	BRKT, CONN	BM10634	J1503	1	1		
MS10799	BRKT, REL, MTG	BM10634		1	1		
MS10833	BRKT, GUIDE, R	BM10634		1	1		
MS10829	BRKT, GUIDE, L	BM10634		1	1		
MS10832	BRKT, MTG, POT	BM10634		1	1		
NT129-632-4	NUT, PLN, SPLINE	BM10634	MS10760	8	8		
PX100-1-106	INS SLVG	BM10634			3		
PX100-1-118	INS SLVG	BM10634			13		
PX337-16	INS, TERM., BD	BM10634			1		
RL156-2	REL, ARM.-4PDT	EM10634			1	K1501	
RV106UX8B503B	RES, VAR-COMP	BM10634			2	R1504, 1505	
ST103-11-62	SW, TOGGLE,-SPDT	BM10634			1	S1504	
TE102-2	TERM., STUD, INS	BM10634			10		
TE104-1	TERM., LUG-LKG	BM10634	TE102/S1517	1			
TE104-2	TERM., LUG-LKG	BM10634	C1506	1	2		
			A10598-5	1			
			A10603-5	2			
			MS10828	1	4		

TMC (Canada) Limited





NEXT ASSY: AX10036  
 QTY PER NEXT ASSY: 2  
 ASSY LEVEL: 1  
 ASSY DESC: CBL, JUMPER  
 ASSY PART NO: CA10503

PART NO.	DESCRIPTION	ITEM LOCATION			QTY PER ASSY.	REFERENCE SYMBOLS	REMARKS
		USED ON ASSEMBLY	USED TO MOUNT	QTY PER U/T/M			
PX100-9-133	INS SLVG	CA10503			1		
PX830-12-1	INS SLVG-SHRINK	CA10503			X		
RG174/U	CBL, RF	CA10503			5		

TMC (Canada) Limited  
 Ottawa, Ontario

REV \_\_\_\_\_    USED ON MODEL: AX10036    USED ON SECTION: \_\_\_\_\_    ASSY SHEET 1 of 1

NEXT ASSY:	QTY PER NEXT ASSY:	DESCRIPTION	ASSY LEVEL:	ASSY DESC:	ITEM LOCATION			QTY PER ASSY:	REFERENCE SYMBOLS	REMARKS
					USED ON ASSEMBLY	USED TO MOUNT	QTY U/T/M			
BMA10634	1	WIRE, ELEC, INS	2		CA409-22-3.00		1			
TE120-2		TERM., LUG-LKG			CA409-22-3.00		1			

TMC (Canada) Limited

LEAD, WIRING

Ottawa, Ontario

NEXT ASSY	PART NO.	QTY PER NEXT ASSY	1	ASSY LEVEL: 2	ASSY DESC:	ITEM LOCATION			QTY PER ASSY	REFERENCE SYMBOLS	REMARKS
						USED ON ASSEMBLY	USED TO MOUNT	QTY PER U/P/PM			
CD101-1		CD, NYLON, LAOG				CA10491			X		
JJ172		CONN, RECP, BNC				CA10491			1	J1502	
JJ287-20		CONN, RECP, PTL				CA10491			1	J1503	
MMG20(7)U8		WIRE, ELEC, INS				CA10491					
MMG24(7)SJ3		CBL, SP, SHLD/JKT				CA10491					
MMG24(7)U0		WIRE, ELEC, INS				CA10491					
MMG24(7)U1		WIRE, ELEC, INS				CA10491					
MMG24(7)U2		WIRE, ELEC, INS				CA10491					
MMG24(7)U3		WIRE, ELEC, INS				CA10491					
MMG24(7)U4		WIRE, ELEC, INS				CA10491					
MMG24(7)U5		WIRE, ELEC, INS				CA10491					
MMG24(7)U6		WIRE, ELEC, INS				CA10491					
MMG24(7)U7		WIRE, ELEC, INS				CA10491					
MMG24(7)U91		WIRE, ELEC, INS				CA10491					
MMG24(7)U92		WIRE, ELEC, INS				CA10491					
MMG24(7)U93		WIRE, ELEC, INS				CA10491					
MMG24(7)U94		WIRE, ELEC, INS				CA10491					
MMG24(7)U95		WIRE, ELEC, INS				CA10491					
MMG24(7)U96		WIRE, ELEC, INS				CA10491					
MMG24(7)U97		WIRE, ELEC, INS				CA10491					
MMG24(7)U98		WIRE, ELEC, INS				CA10491					
RG174/U		CBL, RF				CA10491					
TEL56-32945		TERM, LUG-INS				CA10491			2		

NEXT ASSY: BKA10631  
NEXT ASSY: 1  
ASSY LEVEL: 2  
ASSY DESC:  
PC BD, REF FTT/RRD  
ASSY PART NO: A10640

PART NO.	DESCRIPTION	ITEM LOCATION			QTY. PER ASSY.	REFERENCE SYMBOLS	REMARKS
		USED ON ASSEMBLY	USED TO MOUNT	QTY PER U/T/M			
PC10013-1	PC BD, ETCH	PC10013-2		1			
PC10013-2	PC BD, MACH	PC10013-4		1			
PC10013-4	PC BD, SUB ASSY	A10640		1			
CC100-29	CAP, FXD, CER	A10640		20	CI501 - 1520		
CL275-151	COIL, FF FXD	A10640		10	LI501 - 1510		
TE127-2	TERR, STUD	PC10013-4		32			

REV	QTY	PER	ASSY	USED ON MODEL:	AX10036	USED ON SECTION:	ASSY SHEET	OF	
NEXT ASSY:	QTY PER NEXT ASSY:	ASSY LEVEL:	ASSY DESC:	ITEM LOCATION		QTY PER U/T/M	QTY PER ASSY	REFERENCE SYMBOLS	REMARKS
BM110634	1	2		USED ON ASSEMBLY	USED TO MOUNT			BM110549-1	
PART NO.	DESCRIPTION								
MS10766-1	PL, SD, L			BM10549-1		1			
FS102-1	LOCKSPRING			BM10549-1		2			
NT129-632-4	NUT, PLN, SPLINE			MS10766-1		2			
RI10001-329	RIVET PDP			BM10549-1		4			

PART NO.	DESCRIPTION	ITEM LOCATION			QTY PER ASSY	REFERENCE SYMBOLS	REMARKS
		USED ON ASSEMBLY	USED TO MOUNT	QTY PER U/T/M			
MS10766-2	PL, SD, R	BMA10549-2			1		
FS102-1	LOCKSPRING	BMA10549-2			2		
NT129-632-4	NUJ, PIN, SPLINE	MS10766-2			2		
R1100001-329	RIVET POP	BMA10549-2			4		





**MATERIAL LIST/NUMERICAL PARTS LIST**

REV: \_\_\_\_\_ USED ON MODEL: AX10036 GABLE ASSY. AC POWER USED ON SECTION: \_\_\_\_\_ ASBY SHEET 1 OF 1

PART NO.	DESCRIPTION	USED ON ASSEMBLY	ITEM LOCATION		QTY PER U/TKM	QTY PER ASSY.	REFERENCE SYMBOLS	REMARKS
			USED TO MOUNT					
CA10634	ALPHA CORD SET	CA10660-2				1		
CC100-16	CAP FXD CER	CA10660-2				2		
MS3057-6A	CLAMP CABLE	CA10660-2				1		
MS3420-6	BUSH. RUB.	CA10660-2				1		
MS3106A14S-7S(C)	CONN.	CA10660-2				1		

