

★

TECHNICAL INFORMATION

for

OPERATING CONSOLE

MODEL CON-5



ms
ms

THE TECHNICAL MATERIEL CORPORATION
MAMARONECK, N. Y.

OTTAWA, CANADA

★



TECHNICAL INFORMATION

for

OPERATING CONSOLE

MODEL CON-5



THE TECHNICAL MATERIEL CORPORATION
MAMARONECK, N. Y.

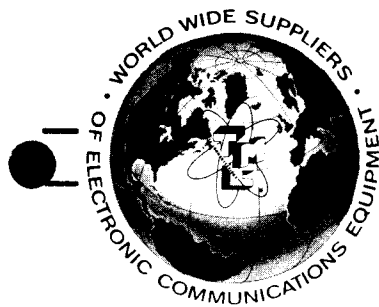
OTTAWA, CANADA

COPYRIGHT 1968
THE TECHNICAL MATERIEL CORPORATION



NOTICE

THE CONTENTS AND INFORMATION CONTAINED IN THIS INSTRUCTION MANUAL IS PROPRIETARY TO THE TECHNICAL MATERIEL CORPORATION TO BE USED AS A GUIDE TO THE OPERATION AND MAINTENANCE OF THE EQUIPMENT FOR WHICH THE MANUAL IS ISSUED AND MAY NOT BE DUPLICATED EITHER IN WHOLE OR IN PART BY ANY MEANS WHATSOEVER WITHOUT THE WRITTEN CONSENT OF THE TECHNICAL MATERIEL CORPORATION.



THE TECHNICAL MATERIEL CORPORATION

C O M M U N I C A T I O N S E N G I N E E R S

700 FENIMORE ROAD

MAMARONECK, N. Y.

W a r r a n t y

The Technical Materiel Corporation, hereinafter referred to as TMC, warrants the equipment (except electron tubes, *fuses, lamps, batteries and articles made of glass or other fragile or other expendable materials) purchased hereunder to be free from defect in materials and workmanship under normal use and service, when used for the purposes for which the same is designed, for a period of one year from the date of delivery F.O.B. factory. TMC further warrants that the equipment will perform in a manner equal to or better than published technical specifications as amended by any additions or corrections thereto accompanying the formal equipment offer.

TMC will replace or repair any such defective items, F.O.B. factory, which may fail within the stated warranty period, PROVIDED:

1. That any claim of defect under this warranty is made within sixty (60) days after discovery thereof and that inspection by TMC, if required, indicates the validity of such claim to TMC's satisfaction.
2. That the defect is not the result of damage incurred in shipment from or to the factory.
3. That the equipment has not been altered in any way either as to design or use whether by replacement parts not supplied or approved by TMC, or otherwise.
4. That any equipment or accessories furnished but not manufactured by TMC, or not of TMC design shall be subject only to such adjustments as TMC may obtain from the supplier thereof.

Electron tubes furnished by TMC, but manufactured by others, bear only the warranty given by such other manufacturers. Electron tube warranty claims should be made directly to the manufacturer of such tubes.

TMC's obligation under this warranty is limited to the repair or replacement of defective parts with the exceptions noted above.

At TMC's option any defective part or equipment which fails within the warranty period shall be returned to TMC's factory for inspection, properly packed with shipping charges prepaid. No parts or equipment shall be returned to TMC, unless a return authorization is issued by TMC.

No warranties, express or implied, other than those specifically set forth herein shall be applicable to any equipment manufactured or furnished by TMC and the foregoing warranty shall constitute the Buyers sole right and remedy. In no event does TMC assume any liability for consequential damages, or for loss, damage or expense directly or indirectly arising from the use of TMC Products, or any inability to use them either separately or in combination with other equipment or materials or from any other cause.

*Electron tubes also include semi-conductor devices.

PROCEDURE FOR RETURN OF MATERIAL OR EQUIPMENT

Should it be necessary to return equipment or material for repair or replacement, whether within warranty or otherwise, a return authorization must be obtained from TMC prior to shipment. The request for return authorization should include the following information:

1. Model Number of Equipment.
2. Serial Number of Equipment.
3. TMC Part Number.
4. Nature of defect or cause of failure.
5. The contract or purchase order under which equipment was delivered.

PROCEDURE FOR ORDERING REPLACEMENT PARTS

When ordering replacement parts, the following information must be included in the order as applicable:

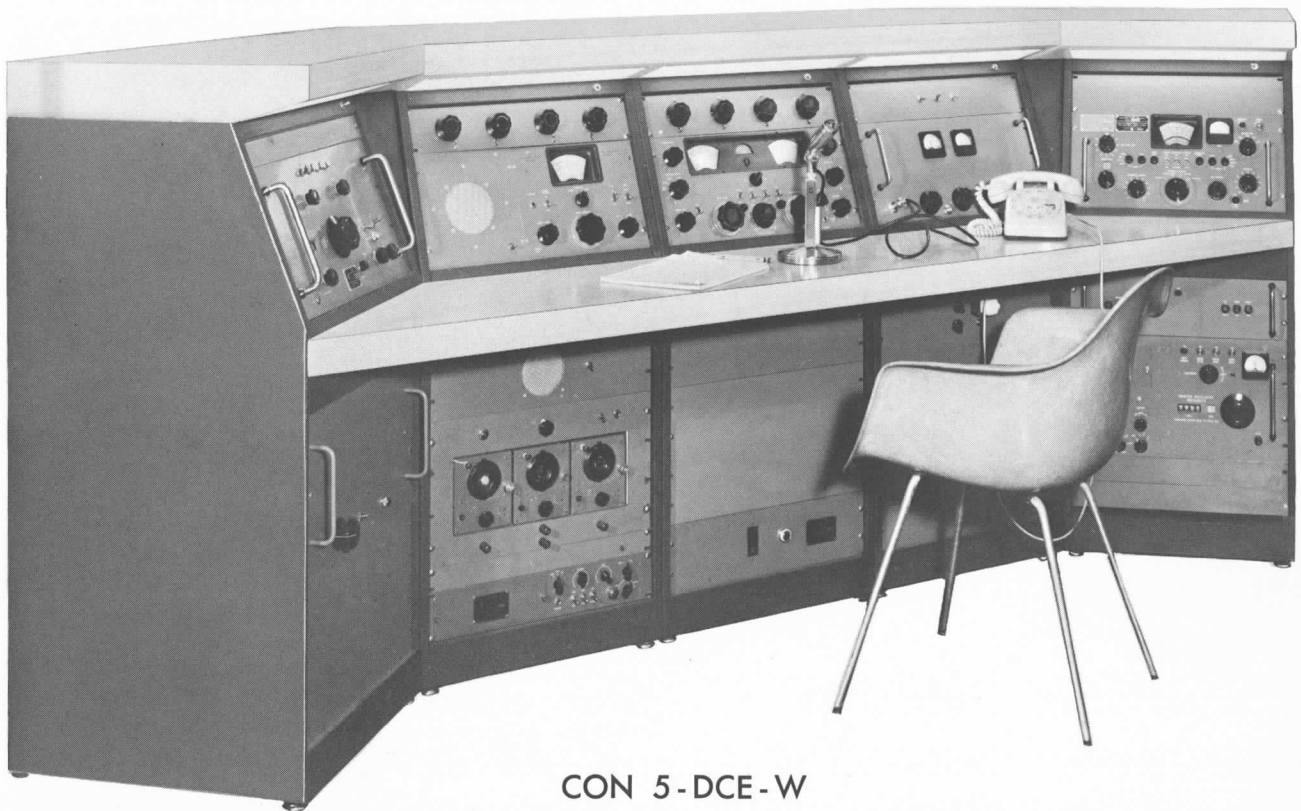
1. Quantity Required.
2. TMC Part Number.
3. Equipment in which used by TMC or Military Model Number.
4. Brief Description of the Item.
5. The *Crystal Frequency* if the order includes crystals.

PROCEDURE IN THE EVENT OF DAMAGE INCURRED IN SHIPMENT

TMC's Warranty specifically excludes damage incurred in shipment to or from the factory. In the event equipment is received in damaged condition, the carrier should be notified immediately. Claims for such damage should be filed with the carrier involved and not with TMC.

All correspondence pertaining to Warranty Claims, return, repair, or replacement and all material or equipment returned for repair or replacement, within Warranty or otherwise, should be addressed as follows:

THE TECHNICAL MATERIEL CORPORATION
Engineering Services Department
700 Fenimore Road
Mamaroneck, New York



CON 5-DCE-W

The TMC Model CON, Operating Console, was specially designed to be used as an operating, monitoring, instrument or supervisory console in commercial, AM, FM, TV broadcasting; Computer, Data Handling, Telemetry, Laboratory, fixed and mobile applications. A "modular" concept based on standard 19" relay rack increments permits straight line, "L" or "U" configurations providing maximum operating efficiency and versatility in a minimum of floor space.

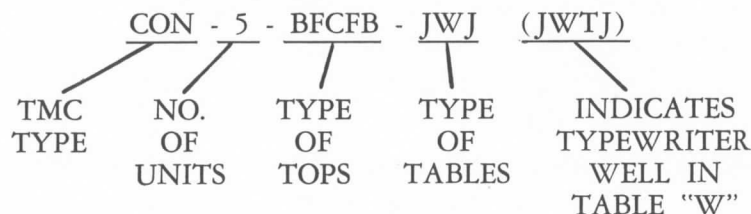
The modular units are constructed of 16 gauge steel, suitably reinforced where necessary, and are finished in TMC blue. Each module is provided with an AC power strip and junction box. Convenient cableways permit internal interconnection of modules. Tops and tables are of waterproof plywood covered with grey formica. Each top section contains indirect lighting for the operating table and equipment. Typewriter wells or hinged typewriter supports are available on request.

Special consoles to handle varied requirements are available. A sample of this is shown in the photographs on the following pages. Our engineering department will be happy to assist you in fulfilling your individual requirements.

TECHNICAL SPECIFICATIONS

DIMENSIONS:	Single Unit: 47 inches high x 20 ³ / ₄ inches wide x 21 ³ / ₄ inches deep. (Without table) 47 inches high x 20 ³ / ₄ inches wide x 31 ¹ / ₄ inches deep with table.
MATERIAL:	16 gauge steel.
FINISH:	Console: Dark Blue Enamel. Top and Table: Grey Formica.
PANEL OPENING SIZES:	Above Table — 12 ¹ / ₄ inches x 19 inches. Below Table — 21 ¹ / ₄ inches x 19 inches.
EQUIPMENT MOUNTING INFORMATION:	Standard Relay Rack spacing. ⁵ / ₈ " - ⁵ / ₈ " - ¹ / ₂ " repeated. Center of first hole ¹ / ₄ " from either end.
ILLUMINATION:	"LUMILITE". Will not affect operation of the equipment. (Specify 110 v. or 220 v. when ordering).
VENTILATION:	Openings at base and louvres at top of rear cover. (Information on forced ventilation will be furnished on request.)
POWER:	Power strip furnished as part of right side of each console section. 115/230 v., 50/60 cycle, single phase.
WEIGHT: (Single Unit)	Net Gross 55 lbs. 80 lbs. domestic. 110 lbs. export.
SHIPPING INFORMATION:	Consoles are shipped with individual sections assembled. Hardware is provided for interconnecting the individual units and to attach tops and tables.
SPECIAL EQUIPMENT:	On multiple units where space permits, typewriter wells or hinged typewriter supports will be furnished at your request. Blank "fill in" panels are also available.
ORDERING INFORMATION:	

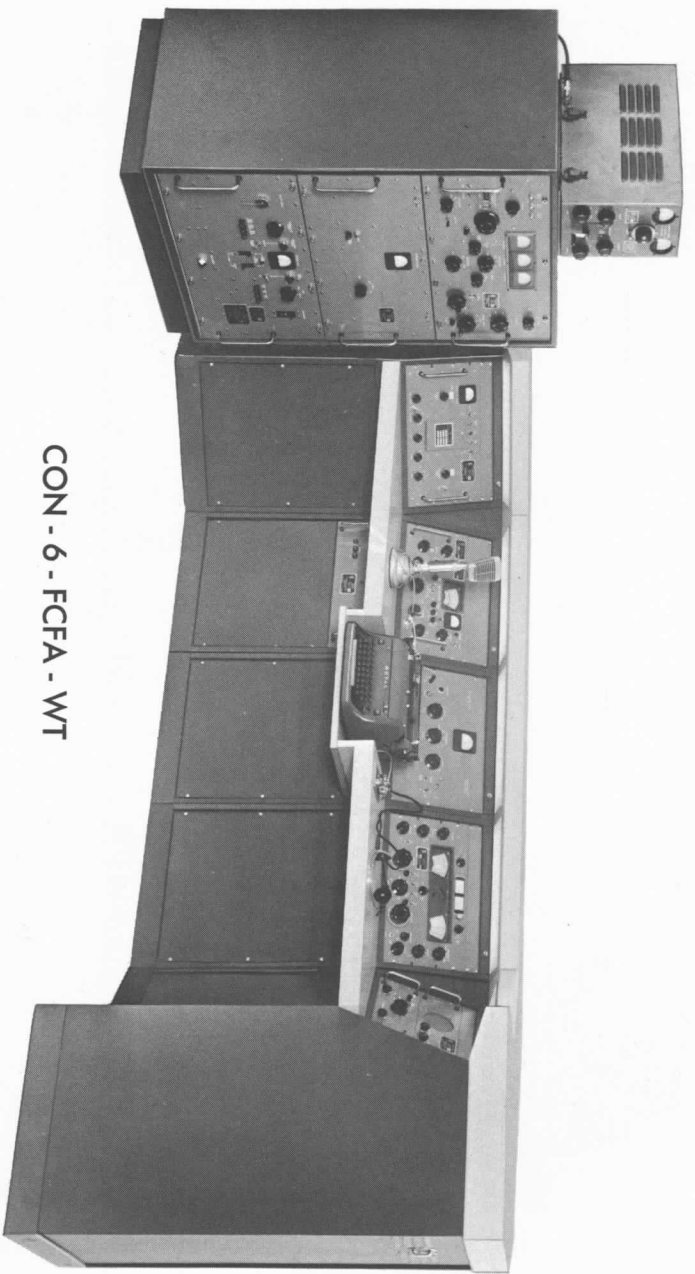
CONSOLE DESIGNATION TO BE IN THE FOLLOWING FORM



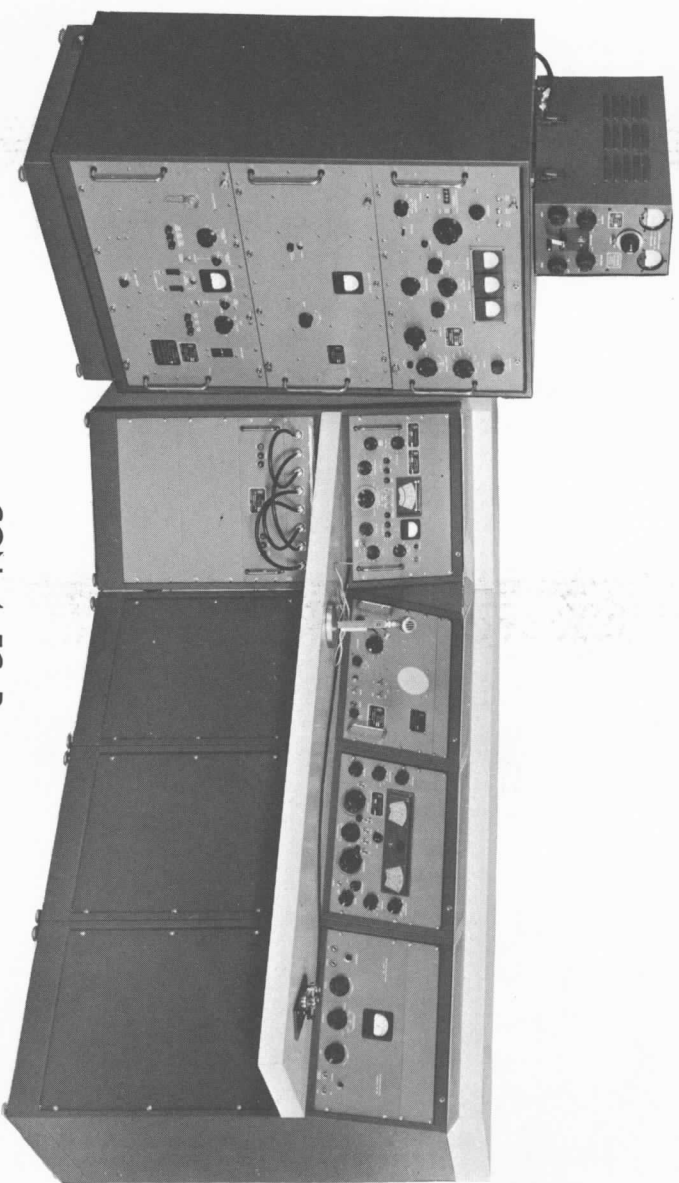
TOPS AVAILABLE — A, B, C, D, E, F, G

TABLES AVAILABLE — H, J, K, L, M, N, P, R, S, U, V, W

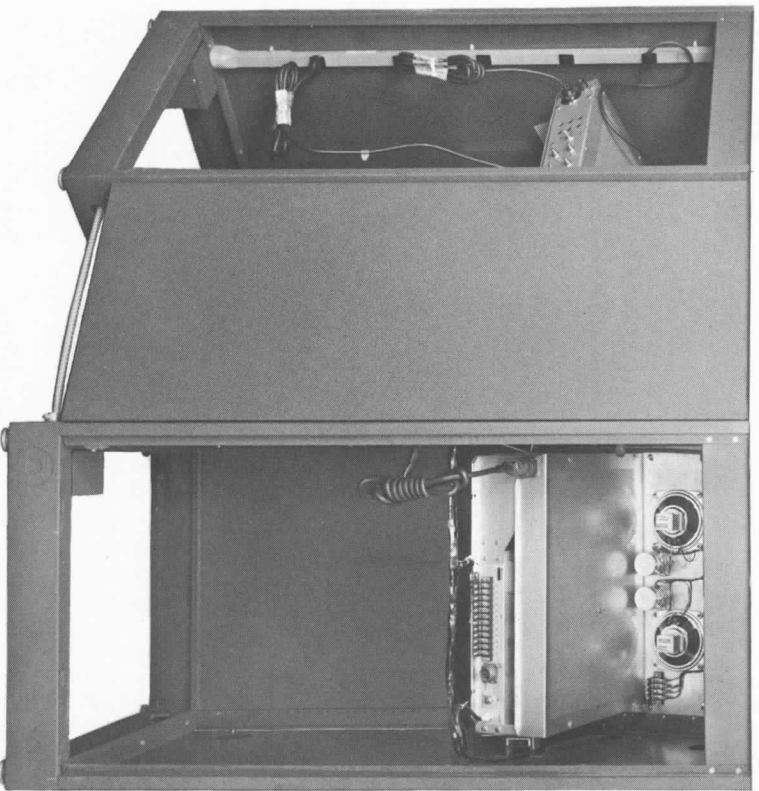
TYPEWRITER WELLS ARE AVAILABLE ONLY IN THOSE TABLES AND IN POSITIONS SHOWN BY DOTTED LINES AND THE LETTER "T".



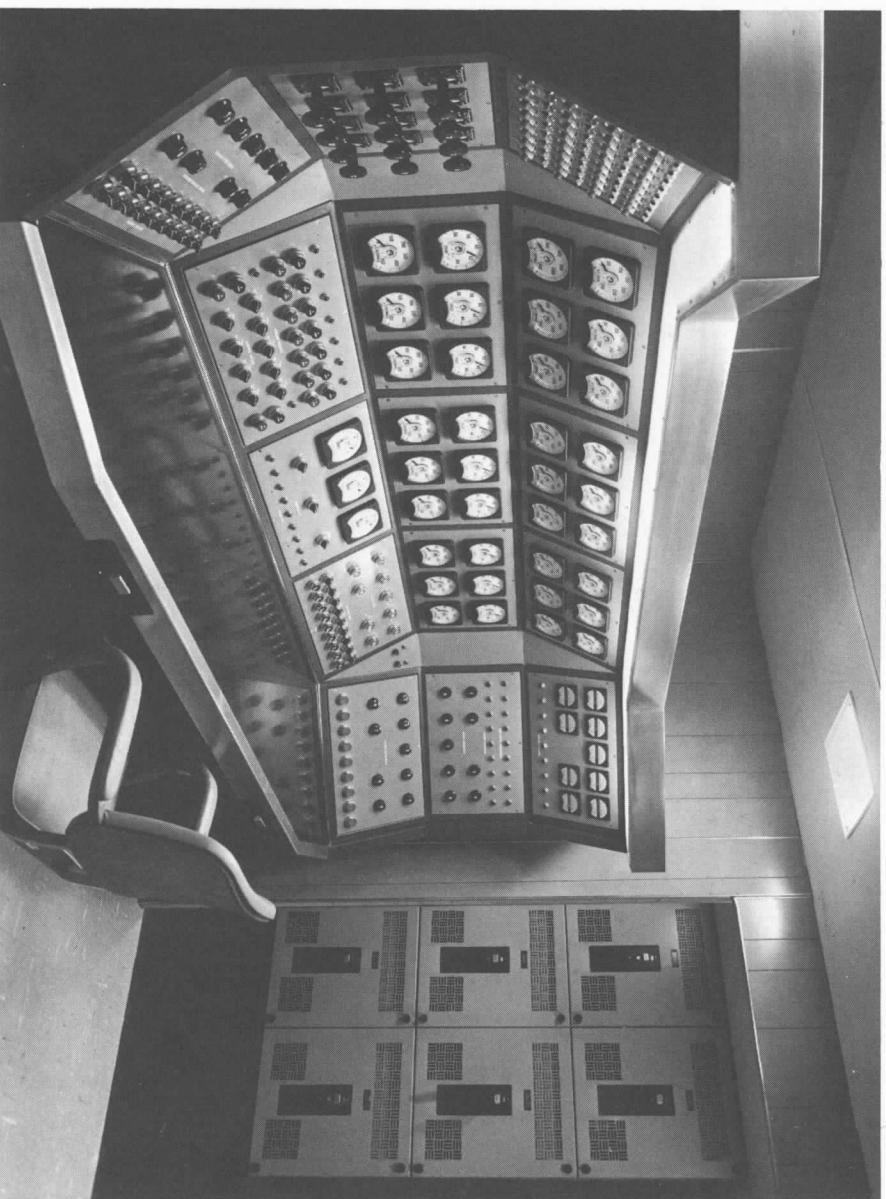
CON - 6 - FCFA - WT



CON 4-FC-R

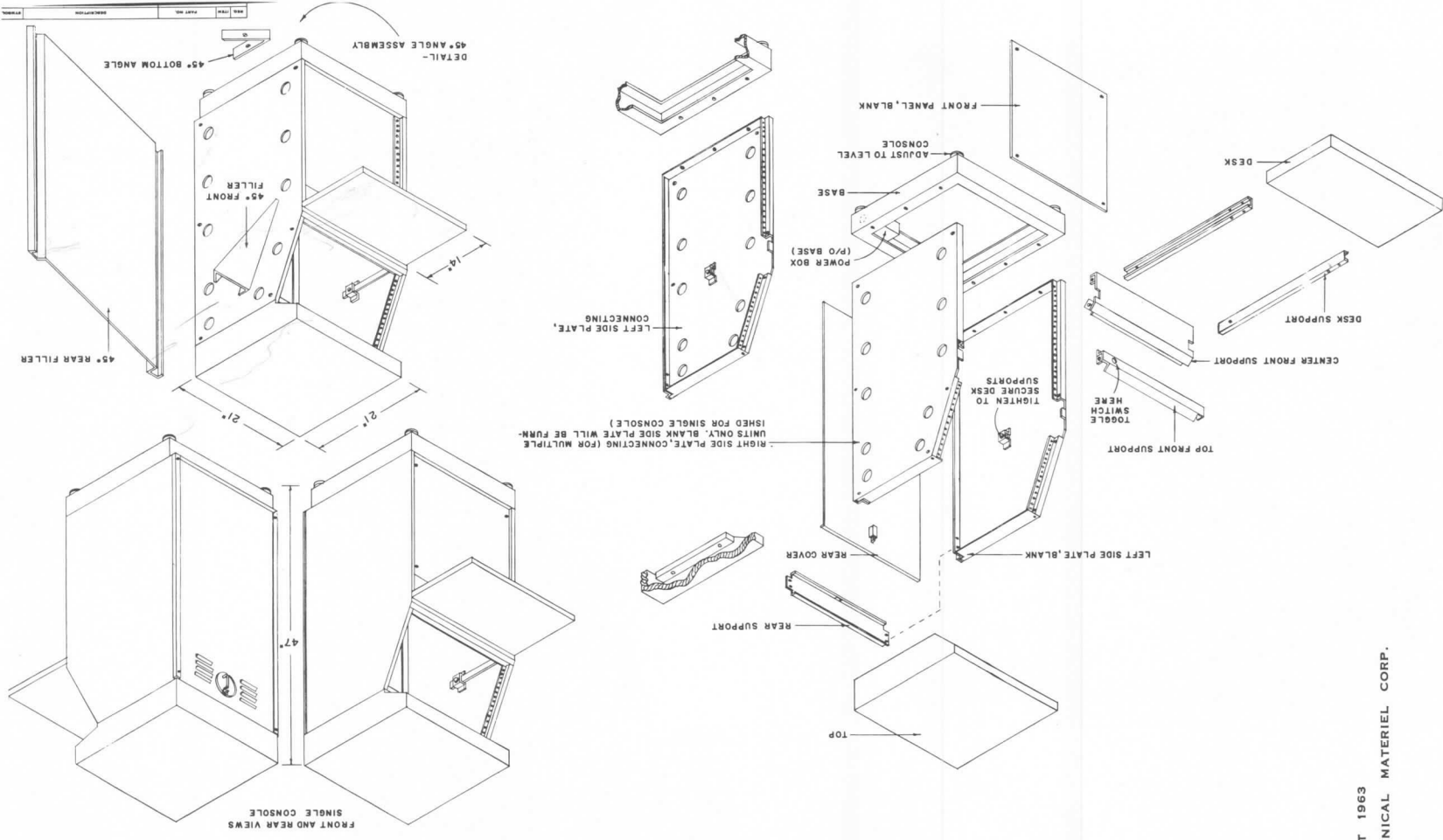
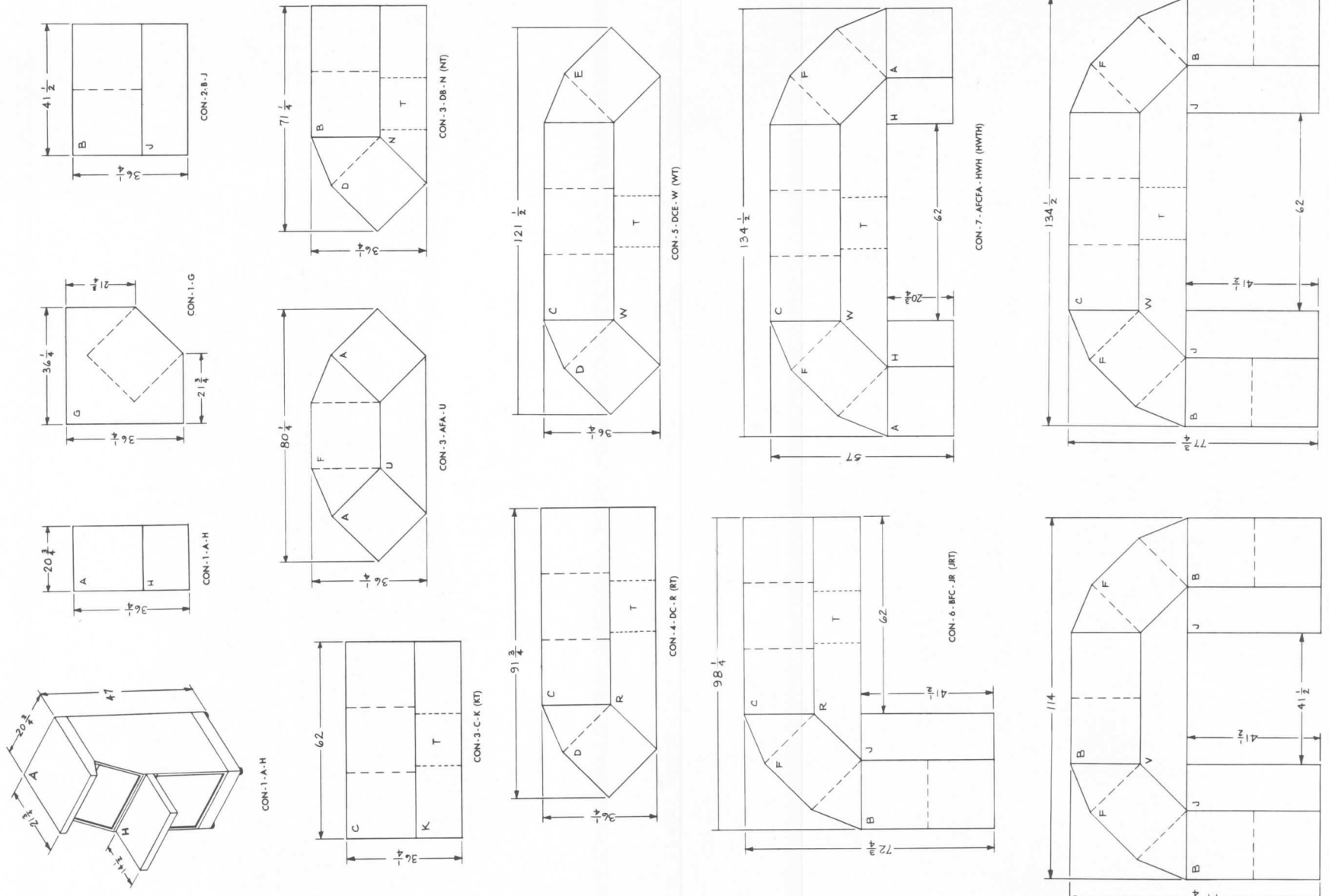


REAR VIEW OF CONSOLE
SHOWING AC STRIP & INTERCONNECTING CABLE



SHOWN ABOVE IS A DIFFERENT CONSOLE THAT CAN BE PROVIDED IN VARIED
CONFIGURATIONS TO MEET SPECIFIC REQUIREMENTS.

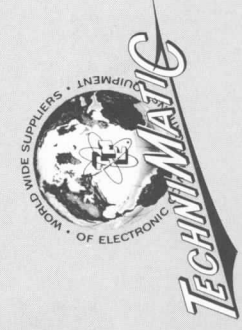
SOME TYPICAL TOPS & TABLE CONFIGURATIONS WITH INSTALLATION DIMENSIONS SHOWN BELOW.



Exploded View, Single Console

IN-1023

COPYRIGHT 1963
THE TECHNICAL MATERIEL CORP.



THE TECHNICAL MATERIEL CORPORATION
MAMARONECK, N. Y. 10544
CABLE "TEPEI"
TWX 914-835-3782

THE WORLD-WIDE SYSTEM OF REMOTE CONTROLLED COMMUNICATIONS
and Subsidiaries
ALEXANDRIA, VIRGINIA • GARLAND, TEXAS • SAN LUIS OBISPO, CALIFORNIA
OXNARD, CALIFORNIA • POMPAHO BEACH, FLORIDA • OTTAWA, CANADA • LUZERN, SWITZERLAND