

MECHANICAL SPECIFICATIONS:

NUMBER OF SECTIONS-
 NUMBER OF POSITIONS-
 ANGLE OF THROW- 30

CONTACTS:

SHORTING TYPE, SECTIONS 1
 NON SHORTING TYPE, SECTIONS
 SILVER PLATED BRASS, SECTIONS 1
 SILVER ALLOY, SECTIONS

WAFERS:

BAKELITE, SECTIONS 1
 CERAMIC, SECTIONS
 MYCALEX, SECTIONS
 IMPREGNATION (IF REQ.)

FINISH REQUIREMENTS:

ARMY NAVY COMMERCIAL
 SALT TEST (IF REQ.)

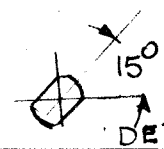
HARDWARE, TO BE SUPPLIED BY MANUFACTURER:

QUAN. -32 NUTS ACROSS FLATS
 MATERIAL PLATING
 QUAN. INTERNAL TOOTH LOCKWASHER
 MATERIAL PLATING

ELECTRICAL SPECIFICATIONS:

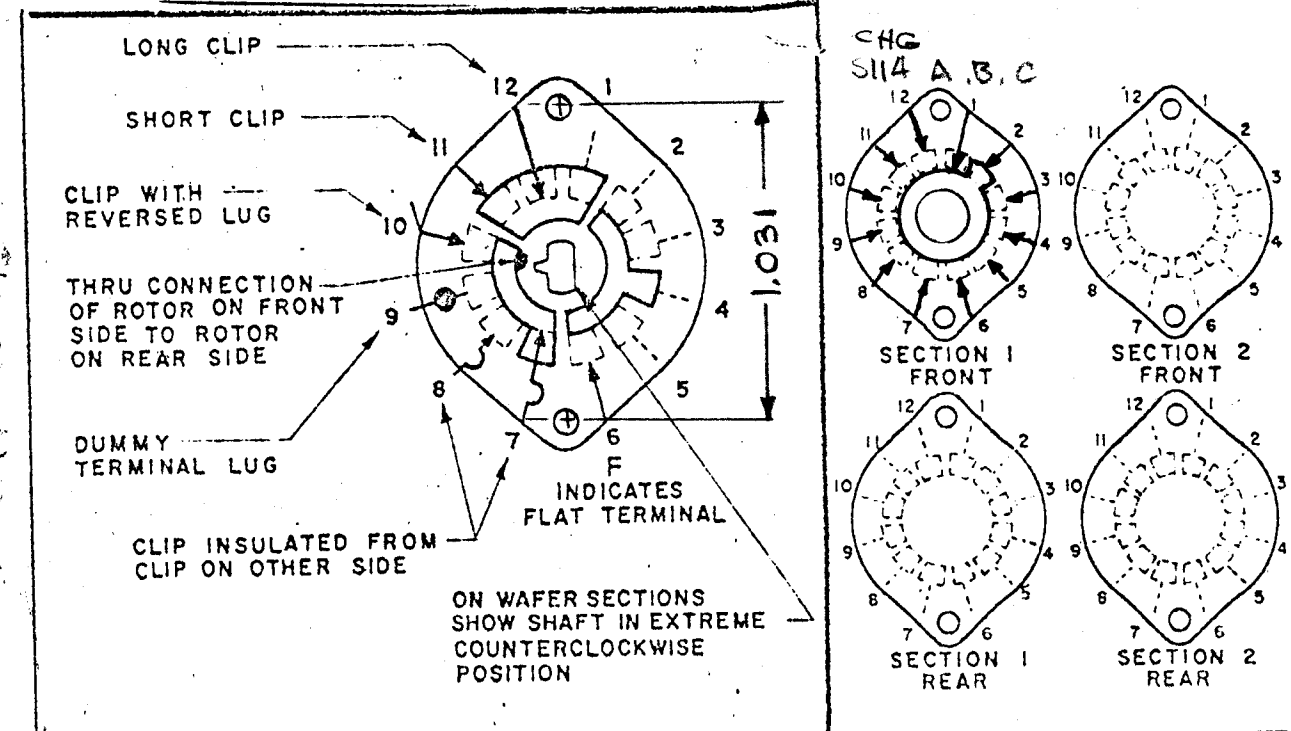
MAXIMUM RATED VOLTAGE 110 VAC
 MAXIMUM RATED CURRENT 10 AMP BREAK
5.0 AMP CARRY

NOTE:

FOR S401-13 ("F" TYPE) SWITCHES, THE SHAFT POSITION MUST BE SPECIFIED ON DETAIL "XX" BELOW.


REVISIONS								
EMN.NO.	DRAFT	CHKD	ZONE	LTR	DESCRIPTION	DATE	APPROVED	
1	GDL	WJB		Ø	ORIGINAL RELEASE FOR PRODUCTION	6-5-78	*	

FRONT AND REAR SECTIONS VIEWED FROM FRONT OR KNOB END OF SWITCH IN EXTREME COUNTERCLOCKWISE POSITION.



3		CHG R	AX	UNLESS OTHERWISE SPECIFIED DIMENSIONS ARE IN INCHES AND INCLUDE CHEMICALLY APPLIED OR PLATED FINISHES	FINAL APPROVAL OJB *	DATE 6/2/78	THE TECHNICAL MATERIEL CORP. MAMARONECK, NEW YORK		
QTY / UNIT	MODEL USED ON	ASS'Y NO.		DECIMALS .X ± .05 .XX ± .01 .XXX ± .005	FRACTIONS 1/64 TOLS. ANGLES 0° 30'	ELECT. DES.	DATE	WAFER SWITCH (MODE)	
APPLICATION				MATERIAL	CHECKED OJB	DATE 12/1/77	DRAWN GDL	DATE	
NOTICE TO PERSONS RECEIVING THIS DRAWING THE TECHNICAL MATERIEL CORPORATION claims proprietary right in the material disclosed hereon. This drawing is issued in confidence for engineering information only and may not be reproduced or used to manufacture anything shown hereon without permission from THE TECHNICAL MATERIEL CORPORATION to the user. This drawing is loaned for mutual assistance and is subject to recall at any time.				FINISH	SIZE B		CODE IDENT. NO. 82679	DWG NO. WS 155	ISSUE Ø
					SCALE		SHEET		OF