

MECHANICAL SPECIFICATIONS:

NUMBER OF SECTIONS-  
 NUMBER OF POSITIONS-  
 ANGLE OF THROW-

CONTACTS:

SHORTING TYPE, SECTIONS  
 NON SHORTING TYPE, SECTIONS  
 SILVER PLATED BRASS, SECTIONS  
 SILVER ALLOY, SECTIONS

WAFERS:

BAKELITE, SECTIONS  
 CERAMIC, SECTIONS  
 MYCALEX, SECTIONS  
 IMPREGNATION (IF REQ.)

FINISH REQUIREMENTS:

ARMY  NAVY  COMMERCIAL   
 SALT TEST ( IF REQ. )

HARDWARE, TO BE SUPPLIED BY MANUFACTURER:

QUAN. -32 NUTS ACROSS FLATS  
 MATERIAL PLATING  
 QUAN. INTERNAL TOOTH LOCKWASHER  
 MATERIAL PLATING

ELECTRICAL SPECIFICATIONS:

MAXIMUM RATED VOLTAGE 110 VAC  
 MAXIMUM RATED CURRENT 1.0 AMP BREAK  
 5.0 AMP CARRY

NOTE:

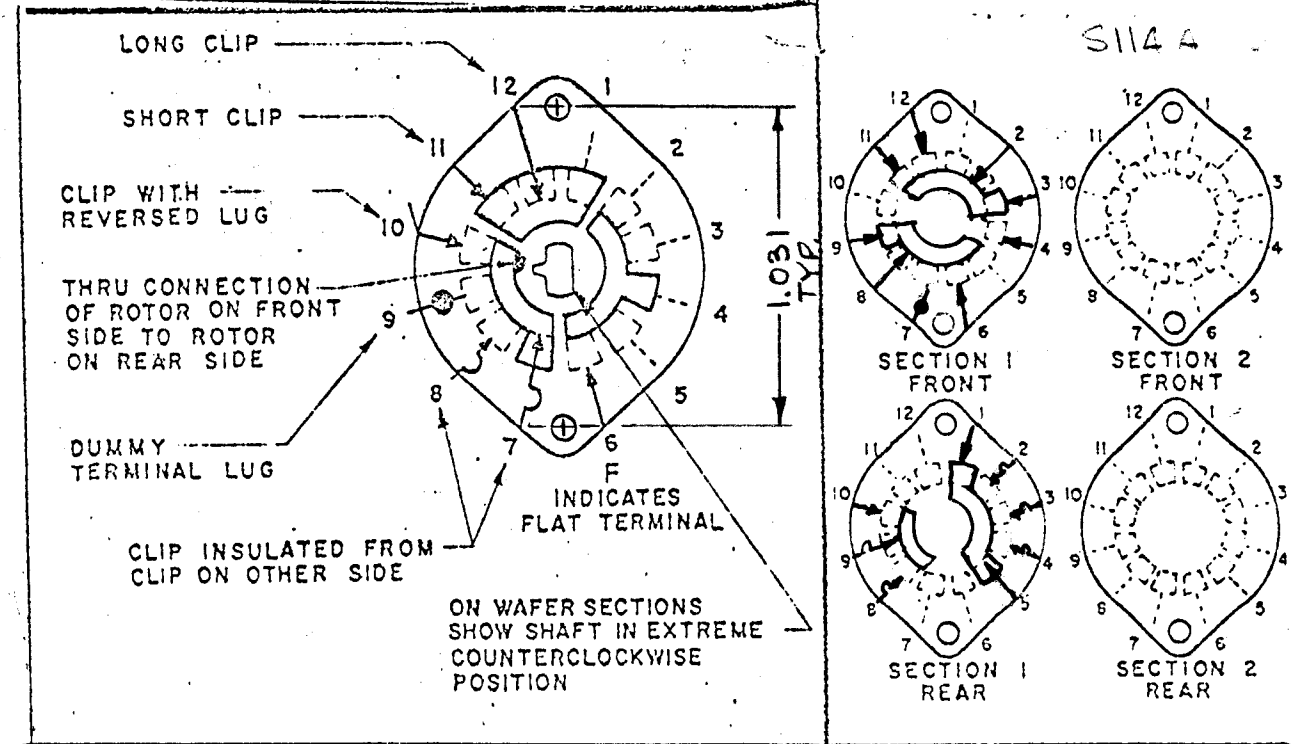
FOR S401-13 ("F" TYPE) SWITCHES, THE SHAFT POSITION MUST BE SPECIFIED ON DETAIL "XX" BELOW.



DETAIL "XX"

REVISIONS							
E.M.N. NO.	DRAFT	CHKD	ZONE	LTR	DESCRIPTION	DATE	APPROVED
	GDL	WSE		Ø	RELEASER RELEASE FOR PRODUCTION	6-5-78	*

FRONT AND REAR SECTIONS VIEWED FROM FRONT OR KNOB END OF SWITCH IN EXTREME COUNTERCLOCKWISE POSITION.



UNLESS OTHERWISE SPECIFIED DIMENSIONS ARE IN INCHES AND INCLUDE CHEMICALLY APPLIED OR PLATED FINISHES		FINAL APPROVAL	DATE	THE TECHNICAL MATERIEL CORP. MAMARONECK, NEW YORK			
DECIMALS .X ± .05 .XX ± .01 .XXX ± .005		MECH. DES.	DATE	WAFER, SWITCH MODE			
FRACTIONS 1/64 ANGLES 0° 30'		ELECT. DES.	DATE	SIZE	CODE IDENT. NO.	DWG. NO.	ISSUE
MATERIAL		CHECKED <i>WSE</i> *	DATE 12/1/77	B	82679	WS-154	Ø
FINISH		DRAWN G.D.L.	DATE 9.22.77	SCALE	SHEET		05
<p>NOTICE TO PERSONS RECEIVING THIS DRAWING</p> <p>THE TECHNICAL MATERIEL CORPORATION claims proprietary right in the material disclosed hereon. This drawing is issued in confidence for engineering information only and may not be reproduced or used to manufacture anything shown hereon without permission from THE TECHNICAL MATERIEL CORPORATION to the user. This drawing is loaned for mutual assistance and is subject to recall at any time.</p>							

QTY / UNIT	MODEL USED ON	ASS'Y NO.
1	MMXR-2B	
APPLICATION		
CODE		