

MECHANICAL SPECIFICATIONS:
 NUMBER OF SECTIONS-
 NUMBER OF POSITIONS-
 ANGLE OF THROW- 30°

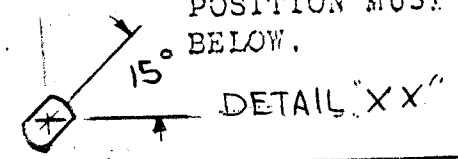
CONTACTS:
 SHORTING TYPE, SECTIONS 1
 NON SHORTING TYPE, SECTIONS _____
 SILVER PLATED BRASS, SECTIONS 1
 SILVER ALLOY, SECTIONS _____

WAFERS:
 BAKELITE, SECTIONS 1
 CERAMIC, SECTIONS _____
 MYCALEX, SECTIONS _____
 IMPREGNATION (IF REQ.) _____

FINISH REQUIREMENTS:
 ARMY _____ NAVY _____ COMMERCIAL
 SALT TEST (IF REQ.) _____
 HARDWARE, TO BE SUPPLIED BY MANUFACTURER:
 QUAN. _____ -32 NUTS _____ ACROSS FLATS
 MATERIAL _____ PLATING _____
 QUAN. _____ INTERNAL TOOTH LOCKWASHER
 MATERIAL _____ PLATING _____

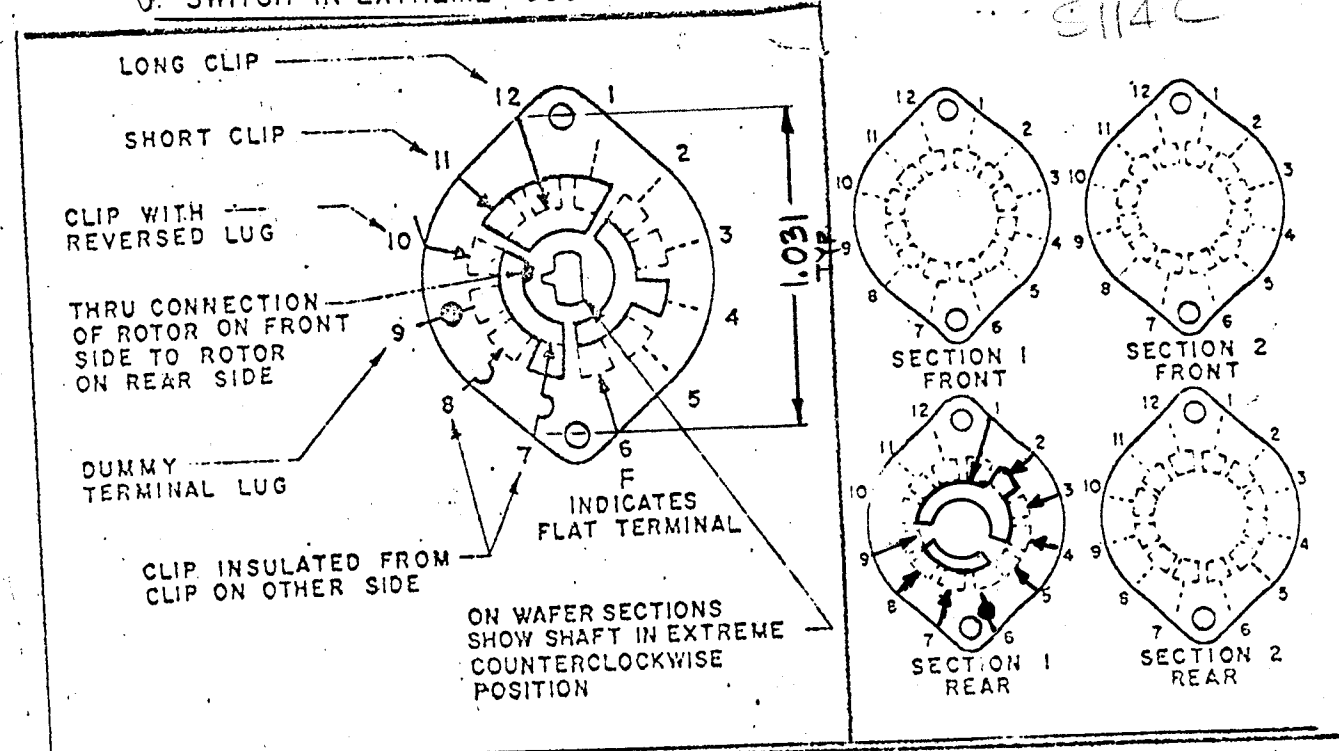
ELECTRICAL SPECIFICATIONS:
 MAXIMUM RATED VOLTAGE 110 VAC
 MAXIMUM RATED CURRENT 1.0 AMP BREAK
5.0 AMP CARRY

NOTE:
 FOR S401-13 ("F" TYPE) SWITCHES, THE SHAFT POSITION MUST BE SPECIFIED ON DETAIL "XX" BELOW.



REVISIONS						DATE	APPROVED
EM.N. NO.	DRAFT	CHKD	ZONE	LTR	DESCRIPTION		
<u>1</u>	<u>GDL</u>	<u>WJB</u>		<u>Φ</u>	ORIGINAL RELEASE FOR PRODUCTION	<u>6-5-78</u>	<u>*</u>

FRONT AND REAR SECTIONS VIEWED FROM FRONT OR KNOB END OF SWITCH IN EXTREME COUNTERCLOCKWISE POSITION.



QTY / UNIT	MODEL USED ON	ASS'Y NO.
	<u>MMXR-2B</u>	
APPLICATION		
	CODE	

UNLESS OTHERWISE SPECIFIED DIMENSIONS ARE IN INCHES AND INCLUDE CHEMICALLY APPLIED OR PLATED FINISHES		FINAL APPROVAL <u>Q B</u>	DATE <u>8/1/78</u>
DECIMALS .X ± .05 .XX ± .01 .XXX ± .005		ELECT. DES.	DATE
FRACTIONS 1/64 TOLS. ANGLES 0° 30'		CHECKED <u>Q B</u>	DATE <u>12/1/77</u>
MATERIAL		DRAWN <u>G.D.L.</u>	DATE <u>9-28-77</u>
FINISH			

THE TECHNICAL MATERIEL CORP. MAMARONECK, NEW YORK			
WAFER SWITCH MODE			
SIZE	CODE IDENT. NO.	DWG NO.	ISSUE
B	82679	WS 152	Φ
SCALE	SHEET		OF

NOTICE TO PERSONS RECEIVING THIS DRAWING
 THE TECHNICAL MATERIEL CORPORATION claims proprietary right in the material disclosed hereon. This drawing is issued in confidence for engineering information only and may not be reproduced or used to manufacture anything shown hereon without permission from THE TECHNICAL MATERIEL CORPORATION to the user. This drawing is loaned for mutual assistance and is subject to recall at any time.