

5

3

2

1

REVISIONS

| EM.N.NO. | DRAFT | CHKD | ZONE | LTR | DESCRIPTION                     | DATE   | APPROVED |
|----------|-------|------|------|-----|---------------------------------|--------|----------|
|          | GDW   |      |      | XI  | OBSELETE NOTE ADD               | 4-3-78 |          |
|          | GDL   | WJB  |      | Ø   | ORIGINAL RELEASE FOR PRODUCTION | 6-6-78 | *        |

MECHANICAL SPECIFICATIONS:  
 NUMBER OF SECTIONS-  
 NUMBER OF POSITIONS-  
 ANGLE OF THROW- 30°


CONTACTS:  
 SHORTING TYPE, SECTIONS 1  
 NON SHORTING TYPE, SECTIONS \_\_\_\_\_  
 SILVER PLATED BRASS, SECTIONS \_\_\_\_\_  
 SILVER ALLOY, SECTIONS \_\_\_\_\_

WAFERS:  
 BAKELITE, SECTIONS \_\_\_\_\_  
 CERAMIC, SECTIONS \_\_\_\_\_  
 MYCALEX, SECTIONS \_\_\_\_\_  
 IMPREGNATION (IF REQ.) \_\_\_\_\_

FINISH REQUIREMENTS:  
 ARMY \_\_\_\_\_ NAVY \_\_\_\_\_ COMMERCIAL ✓  
 SALT TEST ( IF REQ. ) \_\_\_\_\_

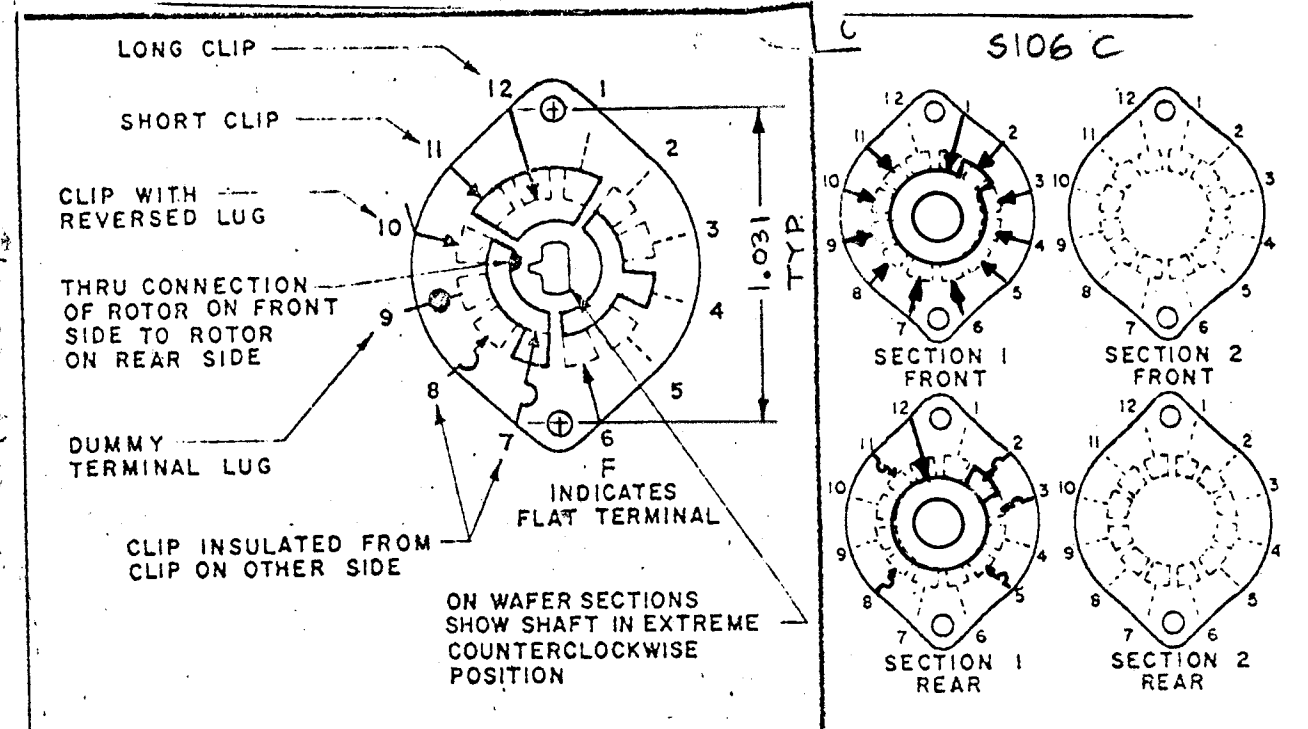
HARDWARE, TO BE SUPPLIED BY MANUFACTURER:  
 QUAN. \_\_\_\_\_ -32 NUTS \_\_\_\_\_ ACROSS FLATS  
 MATERIAL \_\_\_\_\_ PLATING \_\_\_\_\_  
 QUAN. \_\_\_\_\_ INTERNAL TOOTH LOCKWASHER \_\_\_\_\_  
 MATERIAL \_\_\_\_\_ PLATING \_\_\_\_\_

ELECTRICAL SPECIFICATIONS:  
 MAXIMUM RATED VOLTAGE 110 VAC  
 MAXIMUM RATED CURRENT 1.0 AMP BREAK  
5.0 AMP CARRY

NOTE:  
 FOR S401-13 ("F" TYPE) SWITCHES, THE SHAFT POSITION MUST BE SPECIFIED ON DETAIL "XX" BELOW.  
  
 DETAIL "XX"

**OBSOLETE NO LONGER REQ.**

FRONT AND REAR SECTIONS VIEWED FROM FRONT OR KNOB END OF SWITCH IN EXTREME COUNTERCLOCKWISE POSITION.



|   |               |           |   |              |                |         |  |                 |         |       |
|---|---------------|-----------|---|--------------|----------------|---------|--|-----------------|---------|-------|
| 1   |               | AX        | UNLESS OTHERWISE SPECIFIED DIMENSIONS ARE IN INCHES AND INCLUDE CHEMICALLY APPLIED OR PLATED FINISHES |              | FINAL APPROVAL | DATE    | THE TECHNICAL MATERIEL CORP.<br>MAMARONECK, NEW YORK |                 |         |       |
| 1   |               | MMXR-2B   |   |              | MECH. DES.     | DATE    |  |                 |         |       |
| QTY / UNIT  | MODEL USED ON | ASS'Y NO. | DECIMALS  | FRACTIONS    | ELECT. DES.    | DATE    | WAFER SWITCH<br>( 1 MHz )                            |                 |         |       |
| APPLICATION   |               |           | .X ± .05  | 1/64         | CHECKED        | DATE    | SIZE   | CODE IDENT. NO. | DWG NO. | ISSUE |
| CODE  |               |           | .XX ± .01   | TOLS. ANGLES | DRAWN          | DATE    | B  | 82679           | WS 154  | Ø     |
| NOTICE TO PERSONS RECEIVING THIS DRAWING  |               |           | .XXX ± .005   | 0° 30'       |                | 9-22-77 | SCALE  |                 | SHEET   | OF    |
| THE TECHNICAL MATERIEL CORPORATION claims proprietary right in the material disclosed hereon. This drawing is issued in confidence for engineering information only and may not be reproduced or used to manufacture anything shown hereon without permission from THE TECHNICAL MATERIEL CORPORATION to the user. This drawing is loaned for mutual assistance and is subject to recall at any time. |               |           | FINISH  |              |                |         |  |                 |         |       |