

MECHANICAL SPECIFICATIONS:

NUMBER OF SECTIONS-  
 NUMBER OF POSITIONS-  
 ANGLE OF THROW- 30

CONTACTS:

SHORTING TYPE, SECTIONS 1  
 NON SHORTING TYPE, SECTIONS \_\_\_\_\_  
 SILVER PLATED BRASS, SECTIONS \_\_\_\_\_  
 SILVER ALLOY, SECTIONS \_\_\_\_\_

WAFERS:

BAKELITE, SECTIONS 1  
 CERAMIC, SECTIONS \_\_\_\_\_  
 MYCALEX, SECTIONS \_\_\_\_\_  
 IMPREGNATION (IF REQ.) \_\_\_\_\_

FINISH REQUIREMENTS:

ARMY \_\_\_\_\_ NAVY \_\_\_\_\_ COMMERCIAL   
 SALT TEST ( IF REQ. ) \_\_\_\_\_

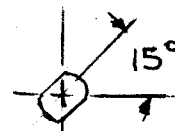
HARDWARE, TO BE SUPPLIED BY MANUFACTURER:

QUAN. \_\_\_\_\_ -32 NUTS \_\_\_\_\_ ACROSS FLATS  
 MATERIAL \_\_\_\_\_ PLATING \_\_\_\_\_  
 QUAN. \_\_\_\_\_ INTERNAL TOOTH LOCKWASHER  
 MATERIAL \_\_\_\_\_ PLATING \_\_\_\_\_

ELECTRICAL SPECIFICATIONS:

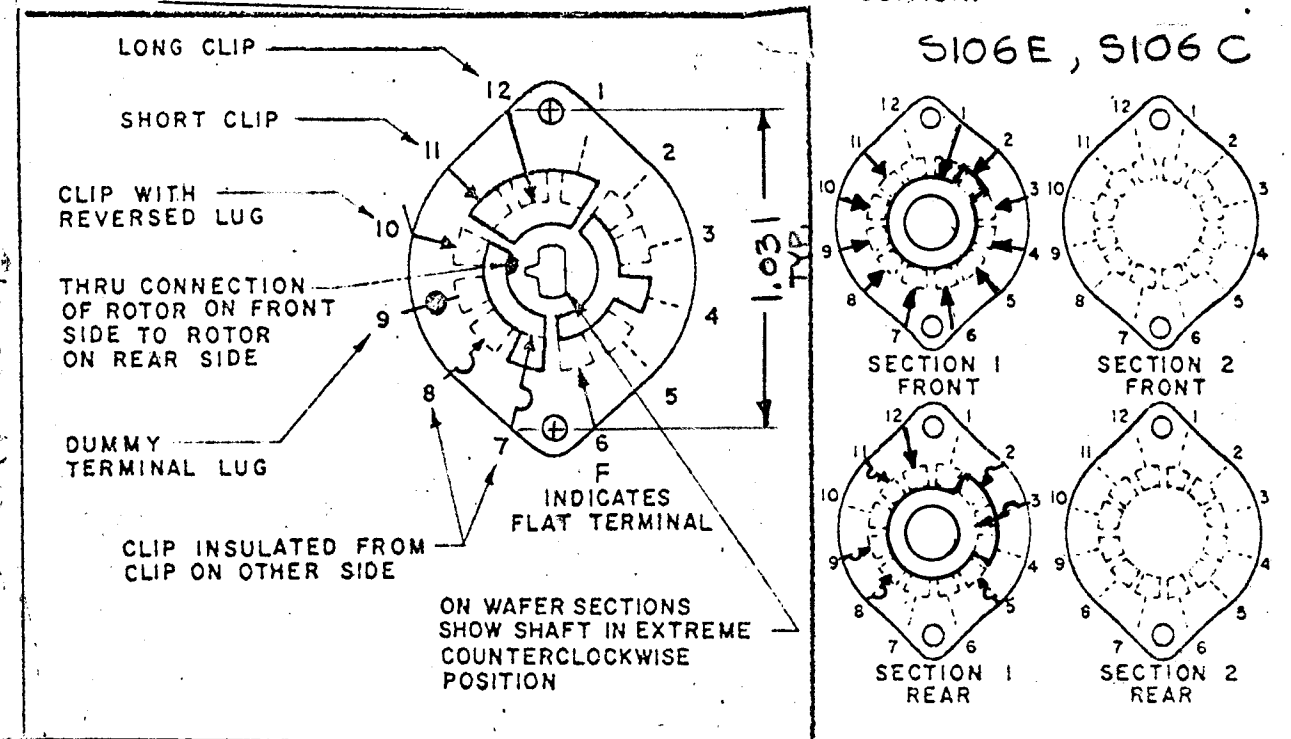
MAXIMUM RATED VOLTAGE 110 VAC  
 MAXIMUM RATED CURRENT 1.0 AMP BREAK  
5.0 AMP CARRY

NOTE:

FOR S401-13 ("F" TYPE) SWITCHES, THE SHAFT POSITION MUST BE SPECIFIED ON DETAIL "XX" BELOW.  
 15°  
 DETAIL "XX"

REVISIONS							
E.M.N.NO.	DRAFT	CHKD	ZONE	LTR	DESCRIPTION	DATE	APPROVED
	GDL			X1	CLIP INSULATED TO PIN 11 ADD. QTY REQ WAS 1	4.4.78	
	GDL	DB		Ø	ORIGINAL RELEASE FOR PRODUCTION	6-5-78	*

FRONT AND REAR SECTIONS VIEWED FROM FRONT OR KNOB END OF SWITCH IN EXTREME COUNTERCLOCKWISE POSITION.



2	AX		UNLESS OTHERWISE SPECIFIED DIMENSIONS ARE IN INCHES AND INCLUDE CHEMICALLY APPLIED OR PLATED FINISHES	FINAL APPROVAL * DB	DATE 8/2/78	THE TECHNICAL MATERIEL CORP. MAMARONECK, NEW YORK	
2	MMXR-2B		DECIMALS .X ± .05 .XX ± .01 .XXX ± .005	Mech. DES.	DATE	WAFER SWITCH 1MHZ	
QTY / UNIT	MODEL USED ON	ASS'Y NO.	FRACTIONS 1/64 ANGLES 0° 30'	ELECT. DES.	DATE	SIZE B	CODE IDENT. NO. 82679
APPLICATION			MATERIAL	CHECKED DB	DATE 12/1/77	DWG NO. WS 149	ISSUE Ø
NOTICE TO PERSONS RECEIVING THIS DRAWING			FINISH	DRAWN GDL	DATE 9-22-77	SCALE	SHEET OF
THE TECHNICAL MATERIEL CORPORATION claims proprietary right in the material disclosed hereon. This drawing is issued in confidence for engineering information only and may not be reproduced or used to manufacture anything shown hereon without permission from THE TECHNICAL MATERIEL CORPORATION to the user. This drawing is loaned for mutual assistance and is subject to recall at any time.							