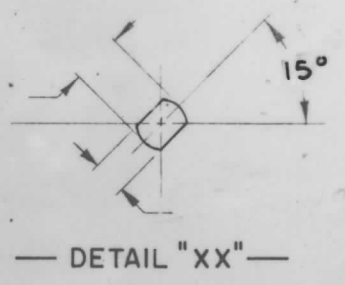


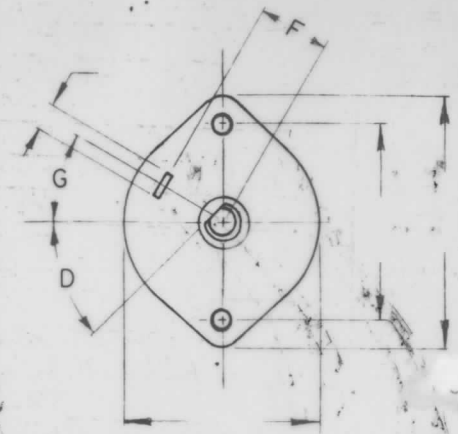
DESG.	DIMENSION	TOL.	REMARK
A		±.015	SHAFT LG. FROM MTG. SURFACE
B		±.005	BUSH. LG.
C		±.015	FLAT LG. (IF REQ.)
D		±2°	FLAT ANGLE (IF REQ.)
E		±.002	FLAT (IF REQUIRED)
F		±.010	KEY LOCATION (IF REQ.)
G			KEY LOCATION (IF REQ.)
M		±.010	
N		±.093	REAR SCR. EXT.
Q		±.031	REAR SHAFT EXT.
R			1st SEC. SPACING

TMC PART NUMBER: S7- \_\_\_\_\_ STAMP ON FRONT PLATE  
 FRONT PLATE SHAPE: ROUND \_\_\_\_\_ OR OBLONG \_\_\_\_\_  
 MECHANICAL SPECIFICATIONS:  
 NUMBER OF SECTIONS- \_\_\_\_\_  
 NUMBER OF POSITIONS- \_\_\_\_\_  
 ANGLE OF THROW- 30°  
 CONTACTS:  
 SHORTING TYPE, SECTIONS \_\_\_\_\_  
 NON SHORTING TYPE, SECTIONS \_\_\_\_\_  
 SILVER PLATED BRASS, SECTIONS \_\_\_\_\_  
 SILVER ALLOY, SECTIONS \_\_\_\_\_  
 WAFERS:  
 BAKELITE, SECTIONS \_\_\_\_\_  
 CERAMIC, SECTIONS \_\_\_\_\_  
 MYCALEX, SECTIONS \_\_\_\_\_  
 IMPREGNATION (IF REQ.) \_\_\_\_\_  
 FINISH REQUIREMENTS:  
 ARMY \_\_\_\_\_ NAVY \_\_\_\_\_ COMMERCIAL   
 SALT TEST (IF REQ.) \_\_\_\_\_  
 HARDWARE, TO BE SUPPLIED BY MANUFACTURER:  
 QUAN. \_\_\_\_\_ -32 NUTS \_\_\_\_\_ ACROSS FLATS  
 MATERIAL \_\_\_\_\_ PLATING \_\_\_\_\_  
 QUAN. \_\_\_\_\_ INTERNAL TOOTH LOCKWASHER \_\_\_\_\_  
 MATERIAL \_\_\_\_\_ PLATING \_\_\_\_\_  
 ELECTRICAL SPECIFICATIONS:  
 MAXIMUM RATED VOLTAGE 110 VAC  
 MAXIMUM RATED CURRENT 1.0 AMP BREAK  
5.0 AMP CARRY

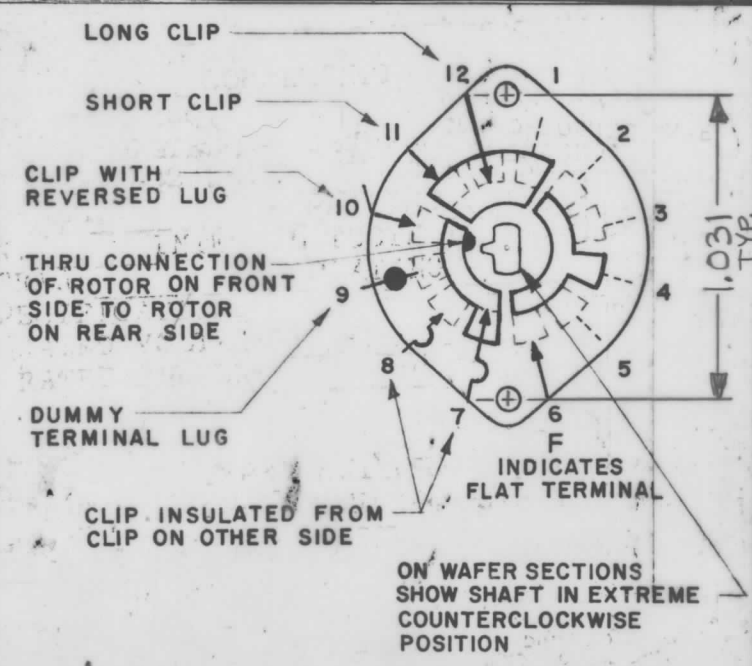
NOTE:  
 FOR S401-13 ("F" TYPE) SWITCHES, THE SHAFT POSITION MUST BE SPECIFIED ON DETAIL "XX" BELOW.



NOTES



NOTE: OBLONG TYPE FRONT PLATE SHOWN, (SEE MECHANICAL SPECIFICATION)



SYMBOLS USED IN MARKING PRINT

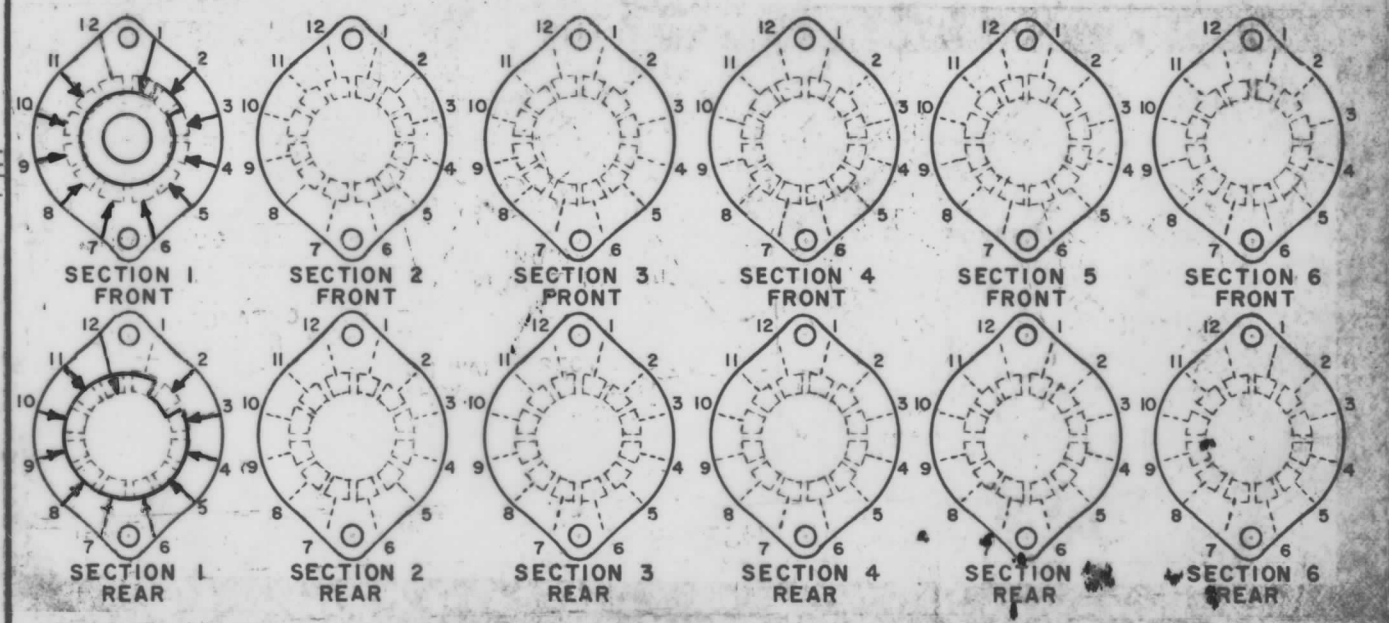
7	AX	
7	MMXR-2B	
QTY./UNIT	MODEL USED ON	ASS'Y. NO.
SCALE	CODE	

THE CONTENTS OF THIS DRAWING ARE THE EXCLUSIVE PROPERTY OF THE TECHNICAL MATERIEL CORP. ITS UNAUTHORIZED USE OR REPRODUCTION IN WHOLE OR IN PART IS STRICTLY FORBIDDEN.

REVISIONS						
SYM	DESCRIPTION	DATE	E.M.N. NO.	DRAFT	CHKD	APPD
	ORIGINAL RELEASE FOR PRODUCTION	6-5-78	A	GDL	WJB	*

S102A THRU S107A

FRONT AND REAR SECTIONS VIEWED FROM FRONT OR KNOB END OF SWITCH IN EXTREME COUNTERCLOCKWISE POSITION.



SWITCH, ROTARY - 12 POINT TYPE

MATERIAL	THE TECHNICAL MATERIEL CORP. MAMARONECK, NEW YORK			
FINISH	TITLE WAFER SWITCH 100KHz, 100Hz, 1KHz, 10KHz, 1MHz ± AB, 10MHz			
UNLESS OTHERWISE SPECIFIED DIMENSIONS ARE IN INCHES AND INCLUDE CHEMICALLY APPLIED OR PLATED FINISHES	DRAWN	DATE	FINAL APPROVAL	
	G.D.L.	9-20-77	WJB	
DECIMALS .X ± .05 .XX ± .01 .XXX ± .005	CHECKED	DATE	DATE	SHEET
FRACTIONS ± 1/64 ANGLES ± 0° 30'	ELECT. DES.	DATE	DATE	REV. LTR.
TOLERANCES	WJB *	12/1/77	6/2/78	Φ