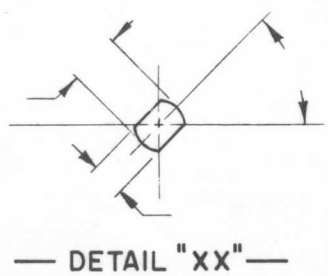
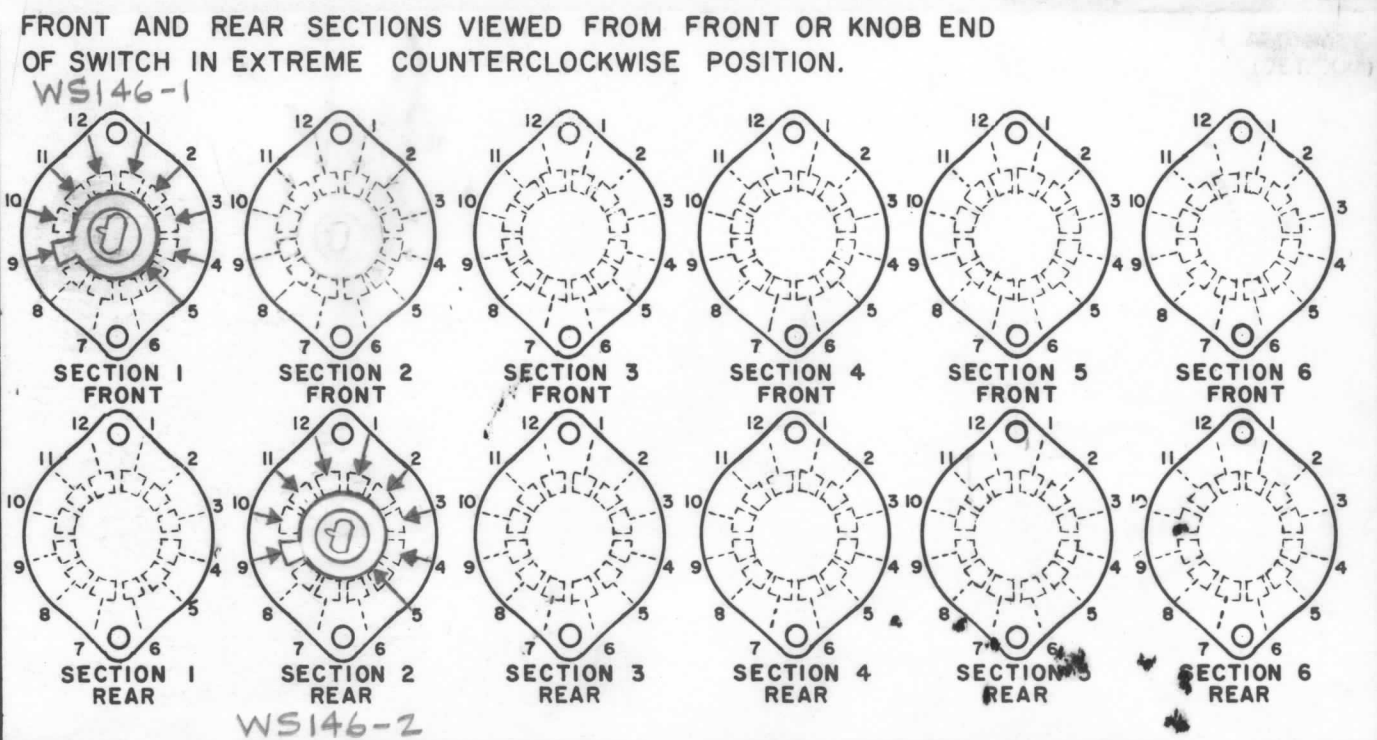
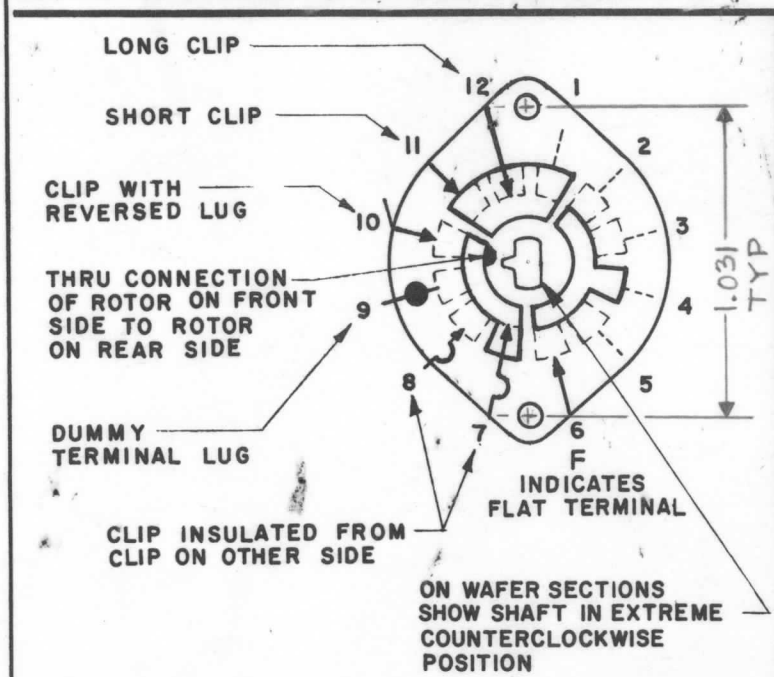


DESG.	DIMENSION	TOL.	REMARK
A	N/A	±.015	SHAFT LG. FROM MTG. SURFACE
B		±.005	BUSH. LG.
C		±.015	FLAT LG. (IF REQ.)
D		±2°	FLAT ANGLE (IF REQ.)
E		±.002	FLAT (IF REQUIRED)
F		±.010	KEY LOCATION (IF REQ.)
G			KEY LOCATION (IF REQ.)
M		±.010	
N		±.093	REAR SCR. EXT.
Q		±.031	REAR SHAFT EXT.
R	N/A		1st SEC. SPACING

REVISIONS						
ZONE	LTR	DESCRIPTION	DATE	E.M.N.NO	DRAFT	CHKD APPD
	Ø	ORIGINAL RELEASE	8/76		CL	JMB *

TMC PART NUMBER: _____ STAMP ON FRONT PLATE
FRONT PLATE SHAPE: ROUND _____ OR OBLONG _____
MECHANICAL SPECIFICATIONS:
NUMBER OF SECTIONS- _____
NUMBER OF POSITIONS- _____
ANGLE OF THROW- _____
CONTACTS:
SHORTING TYPE, SECTIONS _____
NON SHORTING TYPE, SECTIONS ALL
SILVER PLATED BRASS, SECTIONS ALL
SILVER ALLOY, SECTIONS _____
WAFERS:
BAKELITE, SECTIONS _____
CERAMIC, SECTIONS _____
MYCALEX, SECTIONS ALL
IMPREGNATION (IF REQ.) _____
FINISH REQUIREMENTS:
ARMY _____ NAVY _____ COMMERCIAL X
SALT TEST (IF REQ.) _____
HARDWARE, TO BE SUPPLIED BY MANUFACTURER:
QUAN. _____ -32 NUTS _____ ACROSS FLATS
MATERIAL _____ PLATING
QUAN. _____ INTERNAL TOOTH LOCKWASHER
MATERIAL _____ PLATING
ELECTRICAL SPECIFICATIONS:
MAXIMUM RATED VOLTAGE 110VAC
MAXIMUM RATED CURRENT 1.0 AMP BREAK
1.0 AMP CARRY
NOTE:
FOR S401-13 ("F" TYPE) SWITCHES, THE SHAFT POSITION MUST BE SPECIFIED ON DETAIL "XX" BELOW.



SYMBOLS USED IN MARKING PRINT

SWITCH, ROTARY - 12 POINT TYPE

lea	TM-125()	BMA496
QTY / UNIT	MODEL USED ON	ASS'Y NO.
APPLICATION		
	CODE	

UNLESS OTHERWISE SPECIFIED DIMENSIONS ARE IN INCHES AND INCLUDE CHEMICALLY APPLIED OR PLATED FINISHES		FINAL APPROVAL	DATE
DECIMALS .X ± .05 .XX ± .01 .XXX ± .005		* <i>JMB</i>	8-12-76
FRACTIONS 1/64 ANGLES 0° -30'			DATE
MATERIAL		ELECT. DES.	DATE
FINISH		CHECKED	DATE
		DRAWN <i>JMB</i>	DATE 8-22-75

THE TECHNICAL MATERIEL CORP. MAMARONECK, NEW YORK			
WAFER, SWITCH, ROTARY			
SIZE	CODE IDENT. NO.	DWG NO.	ISSUE
B	82679	WS146	1
SCALE	SHEET		OF

NOTICE TO PERSONS RECEIVING THIS DRAWING
THE TECHNICAL MATERIEL CORPORATION claims proprietary right in the material disclosed hereon. This drawing is issued in confidence for engineering information only and may not be reproduced or used to manufacture anything shown hereon without permission from THE TECHNICAL MATERIEL CORPORATION to the user. This drawing is loaned for mutual assistance and is subject to recall at any time.

NOTES