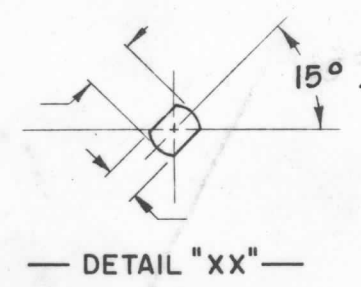


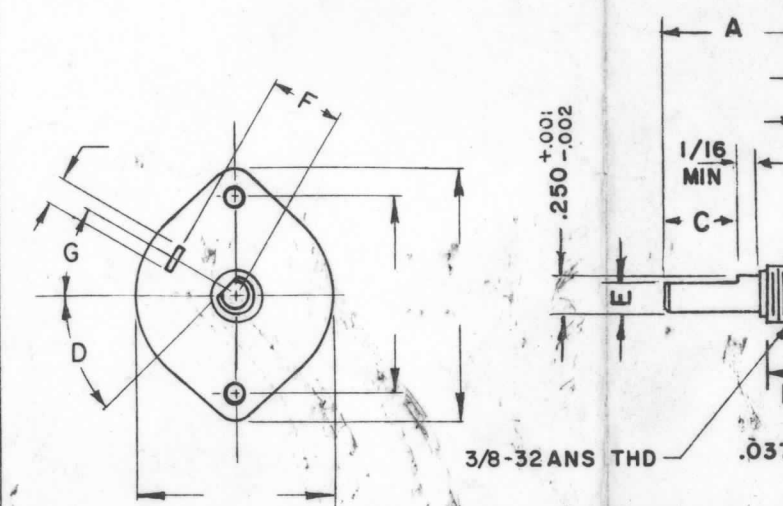
DESG.	DIMENSION	TOL.	REMARK
A		±.015	SHAFT LG. FROM MTG. SURFACE
B		±.005	BUSH. LG.
C		±.015	FLAT LG. (IF REQ.)
D		±2°	FLAT ANGLE (IF REQ.)
E		±.002	FLAT ( IF REQUIRED )
F		±.010	KEY LOCATION (IF REQ.)
G			KEY LOCATION (IF REQ.)
M		±.010	
N		±.093	REAR SCR. EXT.
Q		±.031	REAR SHAFT EXT.
R			1st SEC. SPACING

TMC PART NUMBER: \_\_\_\_\_ STAMP ON FRONT PLATE  
 FRONT PLATE SHAPE: ROUND \_\_\_\_\_ OR OBLONG \_\_\_\_\_  
 MECHANICAL SPECIFICATIONS:  
 NUMBER OF SECTIONS- 1  
 NUMBER OF POSITIONS- 4  
 ANGLE OF THROW- 30°  
 CONTACTS:  
 SHORTING TYPE, SECTIONS   
 NON SHORTING TYPE, SECTIONS \_\_\_\_\_  
 SILVER PLATED BRASS, SECTIONS   
 SILVER ALLOY, SECTIONS \_\_\_\_\_  
 WAFERS:  
 BAKELITE, SECTIONS \_\_\_\_\_  
 CERAMIC, SECTIONS \_\_\_\_\_  
 MYCALEX, SECTIONS 1  
 IMPREGNATION (IF REQ.) \_\_\_\_\_  
 FINISH REQUIREMENTS:  
 ARMY \_\_\_\_\_ NAVY \_\_\_\_\_ COMMERCIAL \_\_\_\_\_  
 SALT TEST ( IF REQ. ) \_\_\_\_\_  
 HARDWARE, TO BE SUPPLIED BY MANUFACTURER:  
 QUAN. \_\_\_\_\_ -32 NUTS \_\_\_\_\_ ACROSS FLATS  
 MATERIAL \_\_\_\_\_ PLATING \_\_\_\_\_  
 QUAN. \_\_\_\_\_ INTERNAL TOOTH LOCKWASHER  
 MATERIAL \_\_\_\_\_ PLATING \_\_\_\_\_  
 ELECTRICAL SPECIFICATIONS:  
 MAXIMUM RATED VOLTAGE \_\_\_\_\_  
 MAXIMUM RATED CURRENT \_\_\_\_\_

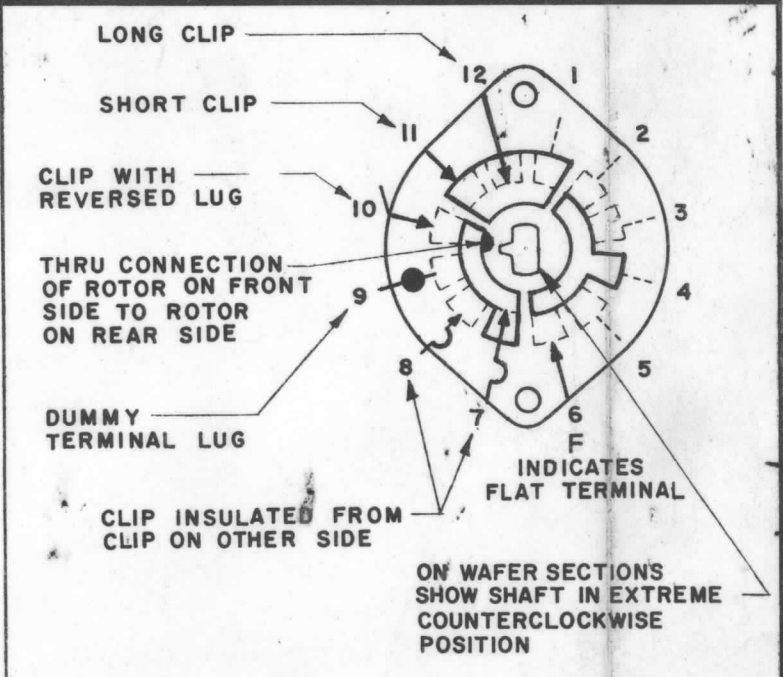
NOTE:  
 FOR S401-13 ("F" TYPE) SWITCHES, THE SHAFT POSITION MUST BE SPECIFIED ON DETAIL "XX" BELOW.



NOTES



NOTE: OBLONG TYPE FRONT PLATE SHOWN, (SEE MECHANICAL SPECIFICATION)

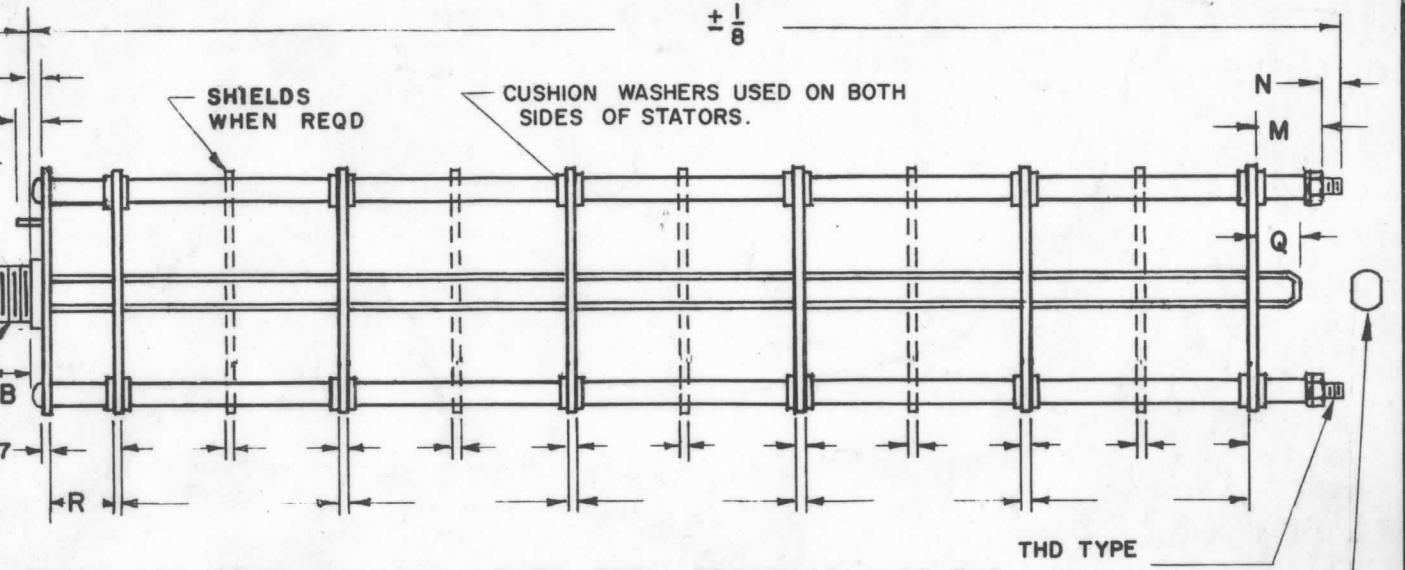


SYMBOLS USED IN MARKING PRINT

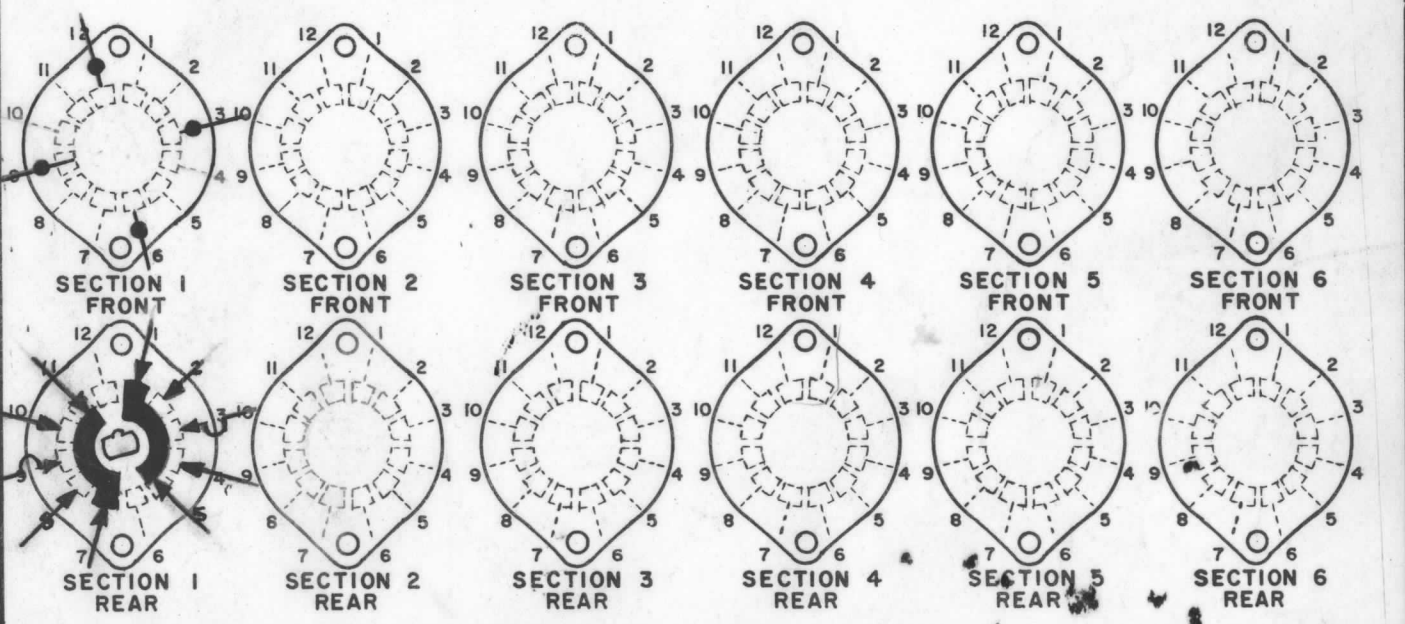
1	SBE-2A	
Q'TY./UNIT	MODEL USED ON	ASS'Y. NO.
SCALE	CODE	
	C	

THE CONTENTS OF THIS DRAWING ARE THE EXCLUSIVE PROPERTY OF THE TECHNICAL MATERIEL CORP. ITS UNAUTHORIZED USE OR REPRODUCTION IN WHOLE OR IN PART IS STRICTLY FORBIDDEN.

REVISIONS						
SYM	DESCRIPTION	DATE	E.M.N. NO.	DRAFT	CHKD	APPD
Ø	ORIGINAL RELEASE FOR PRODUCTION	8/20/65	Ø	Ø	Ø	Ø



FRONT AND REAR SECTIONS VIEWED FROM FRONT OR KNOB END OF SWITCH IN EXTREME COUNTERCLOCKWISE POSITION. SEE NOTE (DET. "XX")



# SWITCH, ROTARY - 12 POINT TYPE POSE

MATERIAL		THE TECHNICAL MATERIEL CORP. MAMARONECK, NEW YORK			
FINISH		TITLE WAFER, SWITCH			
UNLESS OTHERWISE SPECIFIED DIMENSIONS ARE IN INCHES AND INCLUDE CHEMICALLY APPLIED OR PLATED FINISHES		DRAWN H. Austin	DATE 8-30-65	FINAL APPROVAL M. Hay	
DECIMALS .X ± .05 .XX ± .01 .XXX ± .005		CHECKED	DATE	DATE 8/20/65	
FRACTIONS ± 1/64 ANGLES ± 0° 30'		ELECT. DES. Ø	DATE 8-30-65	SHEET WS137	
TOLERANCES		MECH. DES.	DATE	REV. LTR.	