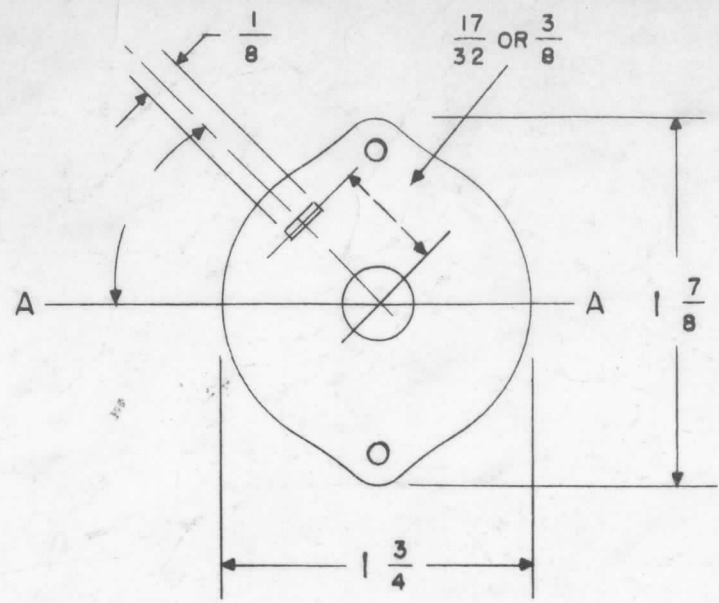
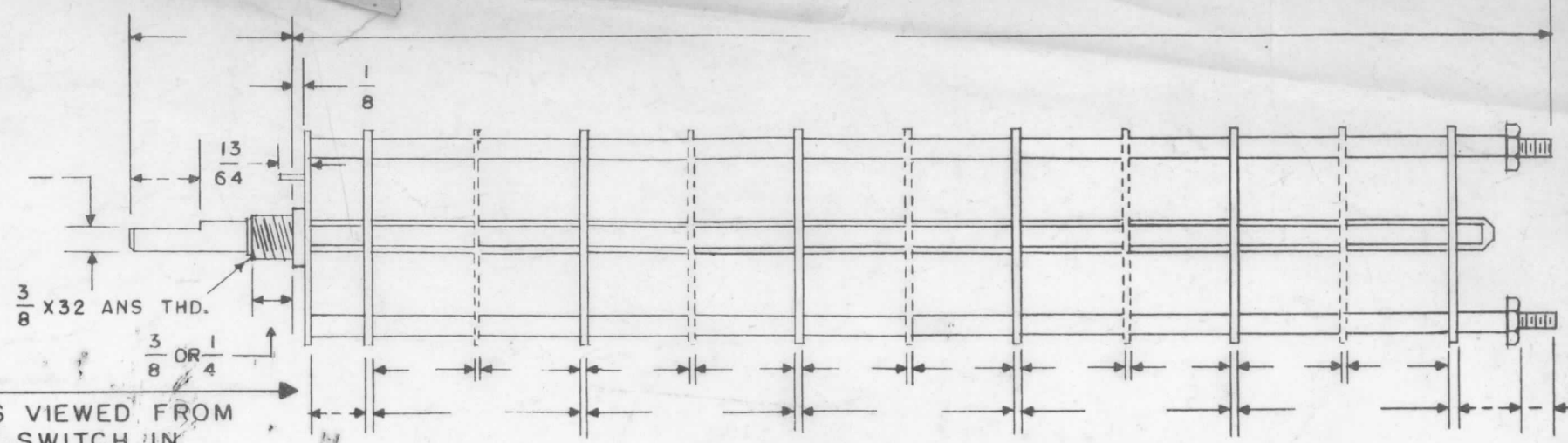


WS-117 A



FRONT & REAR SECTIONS VIEWED FROM FRONT OR KNOB END OF SWITCH IN EXTREME COUNTER CLOCKWISE POSITION



DRAW IN FLAT ON ABOVE SHAFT IN EXTREME COUNTER CLOCKWISE POSITION AND SHOW ANGLE IN REFERENCE TO LINE A-A

NUMBER OF SECTIONS _____
 NUMBER OF POSITIONS _____
 ANGLE OF THROW _____ (30° OR 60°)

PART NUMBER _____
 STAMP ON FRONT PLATE YES _____ NO _____

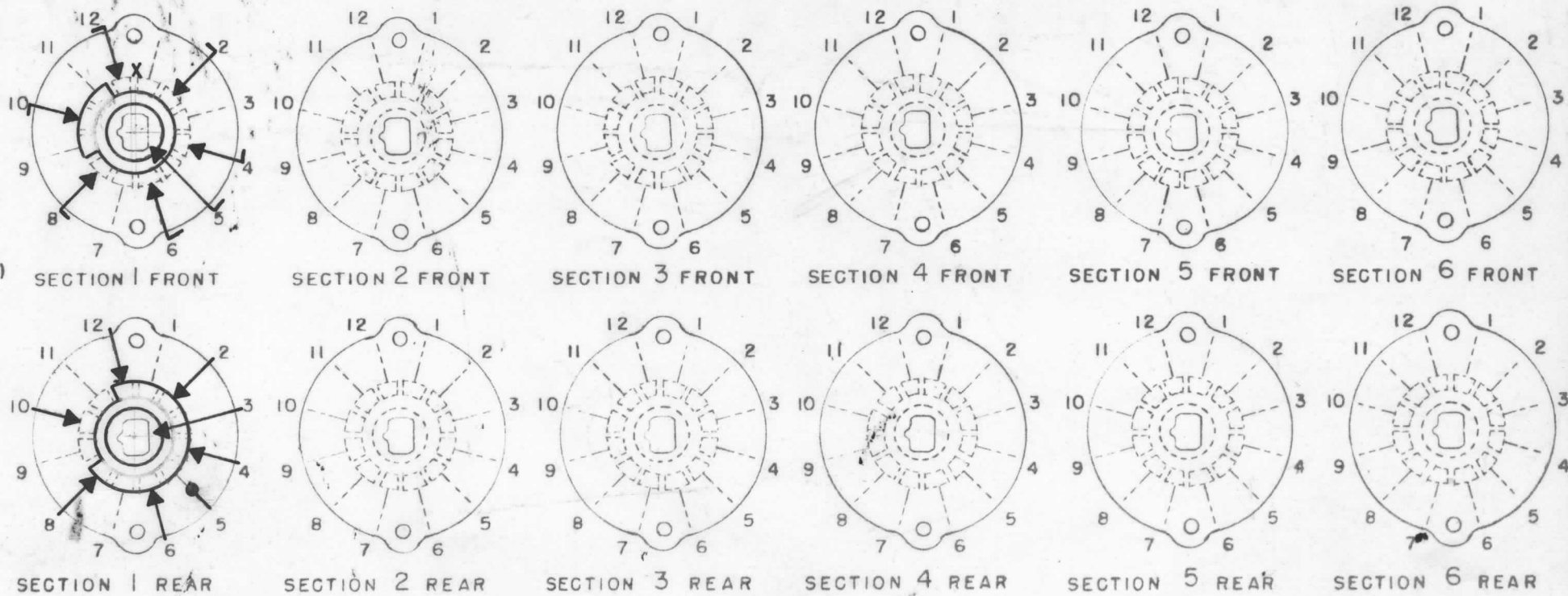
CONTACTS & ROTORS: (IF NOT SPECIFIED, SHORTING TYPE WILL BE SUPPLIED)
 SHORTING NON SHORTING _____

MATERIAL: (IF NOT SPECIFIED, SILVER PLATED BRASS WILL BE SUPPLIED)
 SILVER PLATED BRASS SILVER ALLOY _____

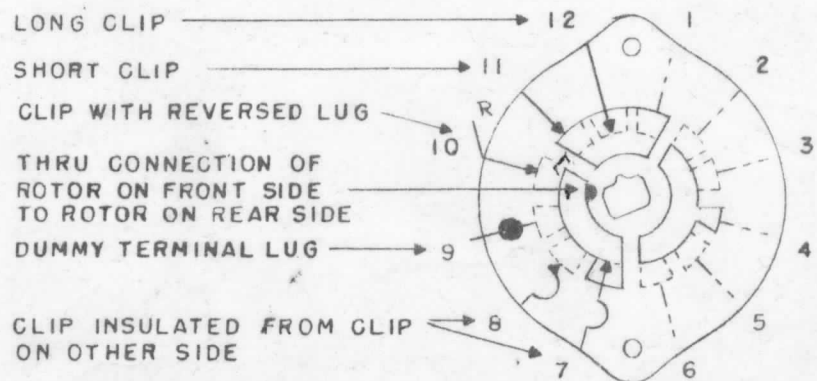
INSULATION: BAKELITE _____ CERAMIC _____
 SPECIFY IMPREGNATION IF REQUIRED _____

FINISH REQUIREMENTS: COMMERCIAL ARMY _____ NAVY _____
 SALT TEST (IF ANY GIVE DETAILS) _____

HARDWARE: SUPPLY
 _____ 3/8-32 NUTS _____ ACROS FLATS MAT. _____ PLATING _____
 _____ 3/8 INT TOOTH LOCKWASHERS MAT. _____ PLATING _____



SYMBOLS USED IN MARKING PRINT



OAK SWITCH
 TYPE - (H) HC DH DHC QH
 QDH QHC QDHC
 (CIRCLE DESIRED TYPE)

ISSUE	ITEM	CHANGED FROM	DATE	CH. NO.	DRAFTS	CHECKER	ENG. APP.
A	1	ADDED DUMMY LUG TO POSITION 5, SECTION 1, REAR.	6/14/61	5063		DJM JCS JAA	
TOLERANCES			SCALE:				
DEC. DIM. ±			MAXIMUM ALLOWABLE TOLERANCES HAVE BEEN DETERMINED AND ANY DEVIATIONS WILL BE CAUSE FOR REJECTION. REMOVE ALL BURRS AND SHARP EDGES				

OUTLINE ROTOR BLADES AS SHOWN ABOVE WITH SWITCH IN EXTREME COUNTER-CLOCKWISE POSITION

1	GPR-92			10-31-62
1	GPR 90 RXD			4-29-60
REQ. PER UNIT	MODEL	PROJECT NO.	ASS'Y. NO.	DATE
				USED ON

REQ. ITEM	PART NO.	DESCRIPTION	SYMBOL
THE TECHNICAL MATERIEL CORP. MAMARONECK, NEW YORK			
WAFER, ROTARY SWITCH			
MATERIAL		P.O.I. J.W. J.A. BP	
TYPE & TEMPER	HEAT TREAT. SPEC.	DRAWN	CHECKED
FINISH & SPEC. NO.		ELEC. DES. APP.	MECH. DES. APP.

WS-117 A