

WS-111

NUMBER OF SECTIONS 2
 NUMBER OF POSITIONS 10
 ANGLE OF THROW 30° (30° OR 60°)

PART NUMBER _____
 STAMP ON FRONT PLATE YES ___ NO ___

CONTACTS & ROTORS: (IF NOT SPECIFIED, SHORTING TYPE WILL BE SUPPLIED)
 SHORTING NON SHORTING ___

MATERIAL: (IF NOT SPECIFIED, SILVER PLATED BRASS WILL BE SUPPLIED)
 SILVER PLATED BRASS SILVER ALLOY ___

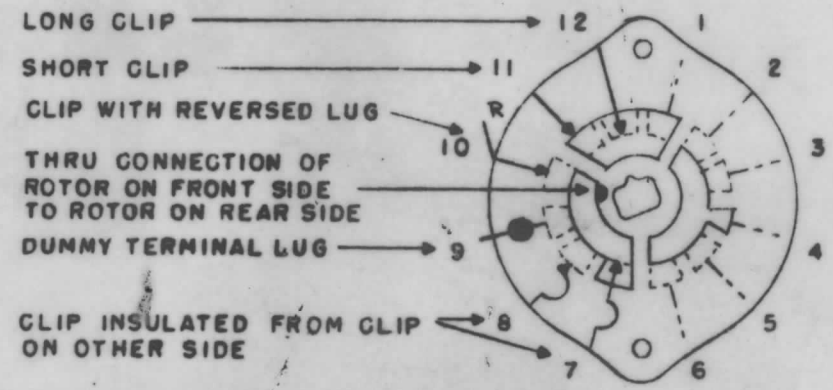
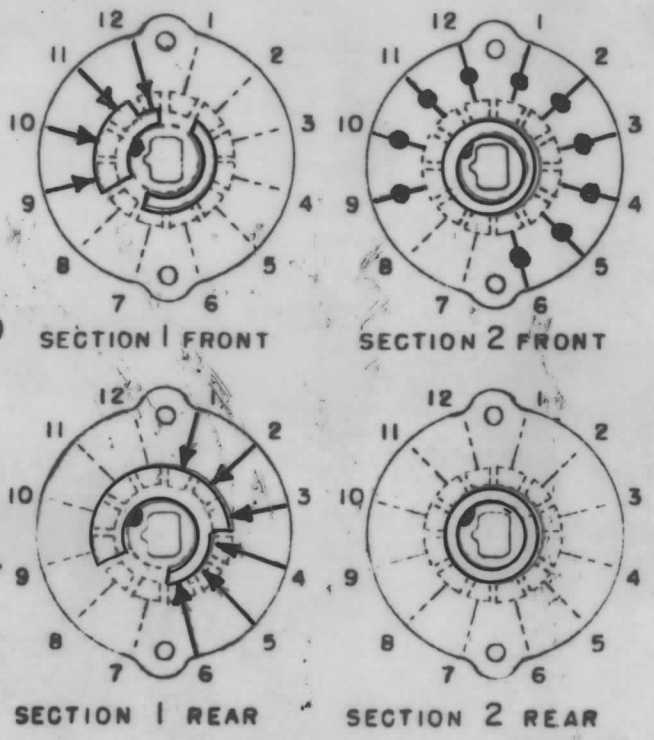
INSULATION: BAKELITE ___ CERAMIC
 SPECIFY IMPREGNATION IF REQUIRED _____

FINISH REQUIREMENTS: COMMERCIAL ___ ARMY ___ NAVY ___
 SALT TEST (IF ANY GIVE DETAILS) _____

HARDWARE: SUPPLY
 ___ 3/8-32 NUTS ___ ACROS FLATS MAT. ___ PLATING ___
 ___ 3/8 INT TOOTH LOCKWASHERS MAT. ___ PLATING ___

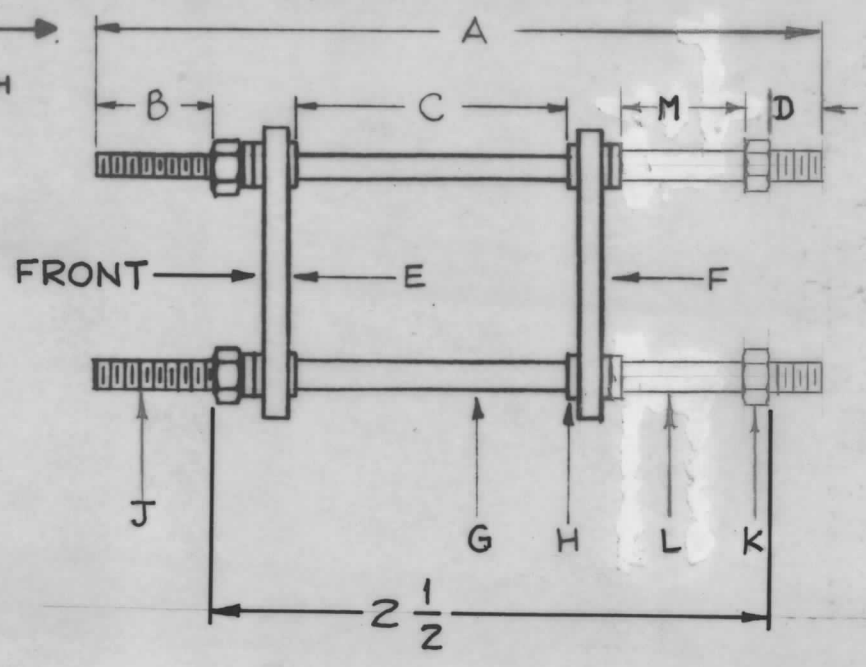
SYMBOLS USED IN MARKING PRINT →

FRONT & REAR OF SECTIONS VIEWED FROM FRONT OR KNOB END OF SWITCH IN EXTREME COUNTER-CLOCKWISE POSITION



OUTLINE ROTOR BLADES AS SHOWN ABOVE WITH SWITCH IN EXTREME COUNTER-CLOCKWISE POSITION

FUNCTION
 11-11.9 KC OSC.



- A ~ 3 1/16
- B ~ 9/32
- C ~ 1
- D ~ 9/32
- E ~ WAFER, SECTION 1
- F ~ WAFER, SECTION 2
- G ~ 5-40 SPACER, 2 REQ.
- H ~ 5-40 FIBRE WASHER, 1/16 THK., 12 REQ.
- J ~ 5-40 THREADED ROD, 2 REQ.
- K ~ 5-40 NUT, 3/32 THK. 4 REQ.
- L ~ 5-40 SPACER, 2 REQ.
- M ~ 5/8

OAK SWITCH TYPE-HC

ISSUE	ITEM	CHANGED FROM	DATE	CH. NO.	DRAFTS	CHECKER	ENG. APP.
TOLERANCES		SCALE:					
DEC. DIM. ±		MAXIMUM ALLOWABLE TOLERANCES HAVE BEEN DETERMINED AND ANY DEVIATIONS WILL BE CAUSE FOR REJECTION.					
FRAC. DIM. ±		REMOVE ALL BURRS AND SHARP EDGES					
ANGULAR DIM. ±							

1	CLL	S-702-B	4-20-60
REQ. PER UNIT	MODEL	PROJECT NO.	ASS'Y. NO.
			DATE
USED ON			

REQ. ITEM	PART NO.	DESCRIPTION	SYMBOL
THE TECHNICAL MATERIEL CORP. MAMARONECK. NEW YORK			
STOCK SIZE		WAFER, SWITCH ROTARY	
MATERIAL		S-702-B	
TYPE & TEMPER		DM	JW
HEAT TREAT. SPEC.		S.D.	WS-111
FINISH & SPEC. NO.		ELEC. DES. APP. MECH. DES. APP.	