

WS-110

NUMBER OF SECTIONS _____
 NUMBER OF POSITIONS _____
 ANGLE OF THROW 30° (30° OR 60°)

PART NUMBER _____
 STAMP ON FRONT PLATE YES ___ NO ___

CONTACTS & ROTORS: (IF NOT SPECIFIED, SHORTING TYPE WILL BE SUPPLIED)
 SHORTING NON SHORTING ___

MATERIAL: (IF NOT SPECIFIED, SILVER PLATED BRASS WILL BE SUPPLIED)
 SILVER PLATED BRASS SILVER ALLOY ___

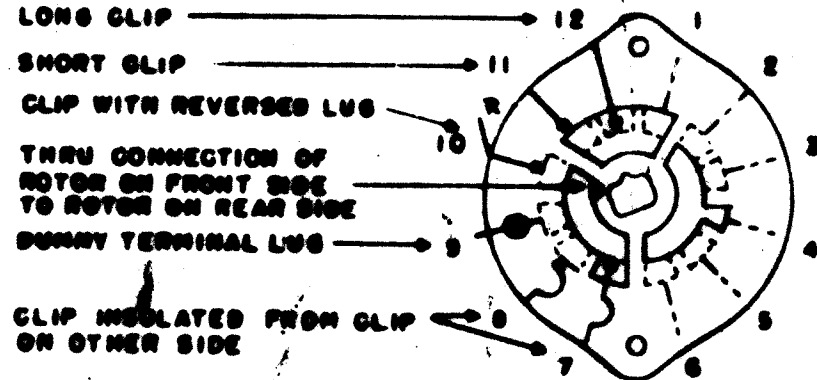
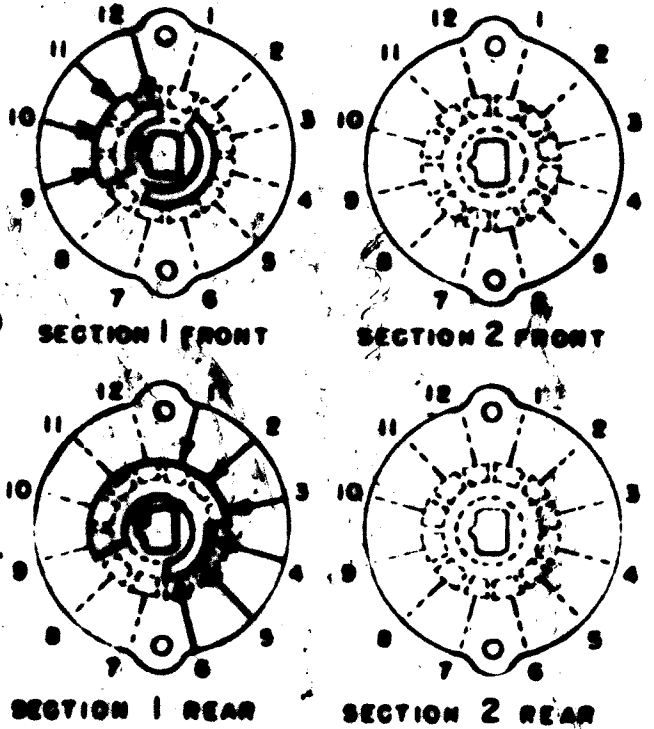
INSULATION: BAKELITE ___ CERAMIC
 SPECIFY IMPREGNATION IF REQUIRED _____

FINISH REQUIREMENTS: COMMERCIAL ___ ARMY ___ NAVY ___
 SALT TEST (IF ANY GIVE DETAILS) _____

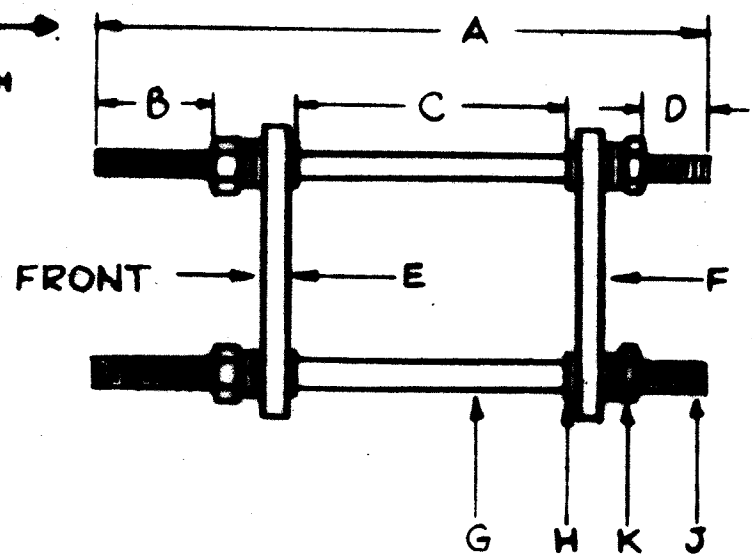
HARDWARE: SUPPLY
 ___ 3/8-32 NUTS ___ ACROS FLATS MAT. ___ PLATING ___
 ___ 3/8 INT TOOTH LOCKWASHERS MAT. ___ PLATING ___

SYMBOLS USED IN MARKING PRINT →

FRONT & REAR OF SECTIONS VIEWED FROM FRONT OR KNOB END OF SWITCH IN EXTREME COUNTER-CLOCKWISE POSITION



OUTLINE ROTOR BLADES AS SHOWN ABOVE WITH SWITCH IN EXTREME COUNTER-CLOCKWISE POSITION



- A ~ _____
- B ~ _____
- C ~ _____
- D ~ _____
- E ~ WAFER, SECTION 1
- F ~ WAFER, SECTION 2 (NOT USED)
- G ~ _____ SPACER, _____ REQ.
- H ~ _____ FIBRE WASHER, _____ THK., _____ REQ.
- J ~ _____ THREADED ROD, _____ REQ.
- K ~ _____ NUT, _____ THK., _____ REQ.

NOTE ~ ONLY 1 WAFER REQ. NO SWITCH ASS'Y.

OAK SWITCH TYPE-HC

NOTICE TO PERSONS RECEIVING THIS DRAWING

THE TECHNICAL MATERIEL CORPORATION claims proprietary right in the material disclosed hereon. This drawing is issued in confidence for engineering information only and may not be reproduced or used to manufacture anything shown hereon without permission from THE TECHNICAL MATERIEL CORPORATION to the user. This drawing is loaned for mutual assistance and is subject to recall at any time.

Property of:
 THE TECHNICAL MATERIEL CORPORATION
 MAMARONECK, NEW YORK

REV. ITEM	CHANGED FROM	DATE	OR. NO.	DRAWN	CHECKED	ENG. APP.

CLL	5-10-50	4-20-50
NO. 1	PROJECT NO.	DATE

REV. ITEM	PART NO.	DESCRIPTION	SYMBOL
		THE TECHNICAL MATERIEL CORP. MAMARONECK, NEW YORK	
		WAFER, SWITCH ROTARY	

WS-110

WS-110

NUMBER OF SECTIONS 1
 NUMBER OF POSITIONS 10
 ANGLE OF THROW 30° (30° OR 60°)

PART NUMBER _____
 STAMP ON FRONT PLATE YES ___ NO ___

CONTACTS & ROTORS: (IF NOT SPECIFIED, SHORTING TYPE WILL BE SUPPLIED)
 SHORTING NON SHORTING ___

MATERIAL: (IF NOT SPECIFIED, SILVER PLATED BRASS WILL BE SUPPLIED)
 SILVER PLATED BRASS SILVER ALLOY ___

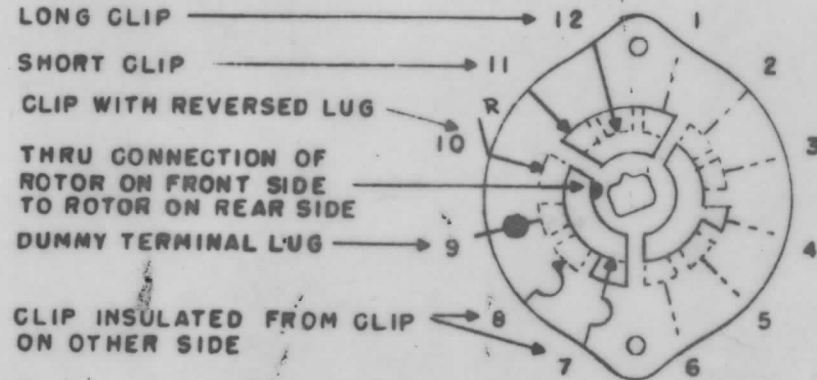
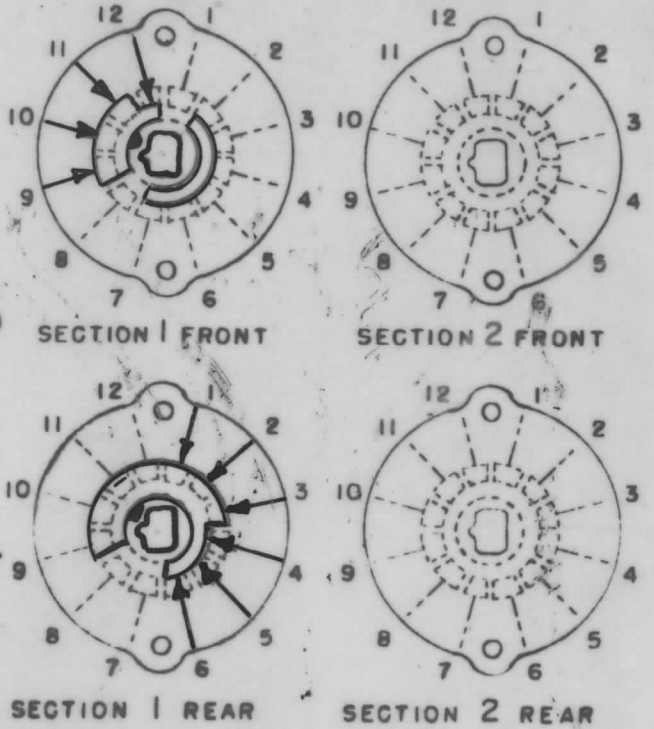
INSULATION: BAKELITE ___ CERAMIC
 SPECIFY IMPREGNATION IF REQUIRED _____

FINISH REQUIREMENTS: COMMERCIAL ___ ARMY ___ NAVY ___
 SALT TEST (IF ANY GIVE DETAILS) _____

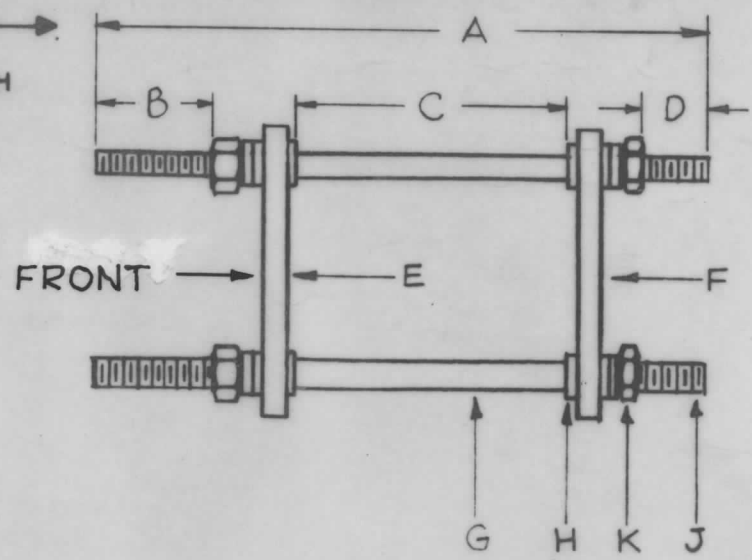
HARDWARE: SUPPLY
 ___ 3/8-32 NUTS ___ ACROS FLATS MAT. ___ PLATING ___
 ___ 3/8 INT TOOTH LOCKWASHERS MAT. ___ PLATING ___

SYMBOLS USED IN MARKING PRINT →

FRONT & REAR OF SECTIONS VIEWED FROM FRONT OR KNOB END OF SWITCH IN EXTREME COUNTER-CLOCKWISE POSITION



OUTLINE ROTOR BLADES AS SHOWN ABOVE WITH SWITCH IN EXTREME COUNTER-CLOCKWISE POSITION



- A ~
- B ~
- C ~
- D ~
- E ~ WAFER, SECTION 1
- F ~ WAFER, SECTION 2 (NOT USED)
- G ~ _____ SPACER, _____ REQ.
- H ~ _____ FIBRE WASHER, _____ THK., _____ REQ.
- J ~ _____ THREADED ROD, _____ REQ.
- K ~ _____ NUT, _____ THK., _____ REQ.

NOTE ~ ONLY 1 WAFER REQ.
 NO SWITCH ASS'Y.

NOTICE TO PERSONS RECEIVING THIS DRAWING
 THE TECHNICAL MATERIEL CORPORATION claims proprietary right in the material disclosed herein. This drawing is issued in confidence for engineering information only and may not be reproduced or used to manufacture anything shown hereon without permission from THE TECHNICAL MATERIEL CORPORATION to the user. This drawing is loaned for mutual assistance and is subject to recall at any time.

Property of:
 THE TECHNICAL MATERIEL CORPORATION
 MAMARONECK, NEW YORK

OAK SWITCH TYPE-HC

ISSUE	ITEM	CHANGED FROM	DATE	CH. NO.	DRAFTS	CHECKER	ENG. APP.
TOLERANCES		SCALE:					
DEC. DIM. ±		MAXIMUM ALLOWABLE TOLERANCES HAVE BEEN DETERMINED AND ANY DEVIATIONS WILL BE CAUSE FOR REJECTION.					
FRAC. DIM. ±		REMOVE ALL BURRS AND SHARP EDGES					
ANGULAR DIM. ±							

1	CLL	S-702-D	4-20-60
REQ. PER UNIT	MODEL	PROJECT NO.	ASS'Y. NO.
			DATE
USED ON			

REQ. ITEM	PART NO.	DESCRIPTION	SYMBOL
THE TECHNICAL MATERIEL CORP. MAMARONECK, NEW YORK			
STOCK SIZE			
WAFER, SWITCH ROTARY			
MATERIAL			
TYPE & TEMPER		HEAT TREAT. SPEC.	DRAWN
			CHECKED
FINISH & SPEC. NO.		ELEC. DES. APP.	MECH. DES. APP.
			WS-110