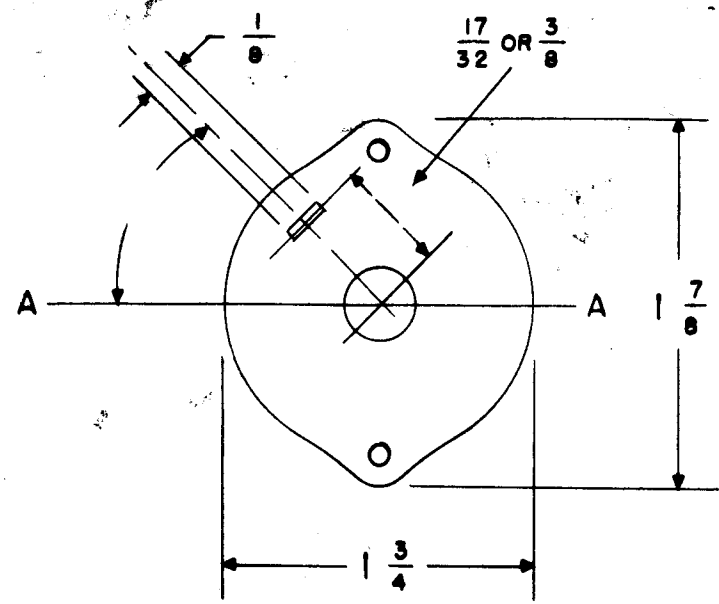


WS-109



DRAW IN FLAT ON ABOVE SHAFT IN EXTREME COUNTER CLOCKWISE POSITION AND SHOW ANGLE IN REFERENCE TO LINE A-A

NUMBER OF SECTIONS 1  
 NUMBER OF POSITIONS 3  
 ANGLE OF THROW 60° (30° OR 60°)

PART NUMBER \_\_\_\_\_  
 STAMP ON FRONT PLATE YES \_\_\_ NO X

CONTACTS & ROTORS: (IF NOT SPECIFIED, SHORTING TYPE WILL BE SUPPLIED)  
 SHORTING \_\_\_ NON SHORTING X

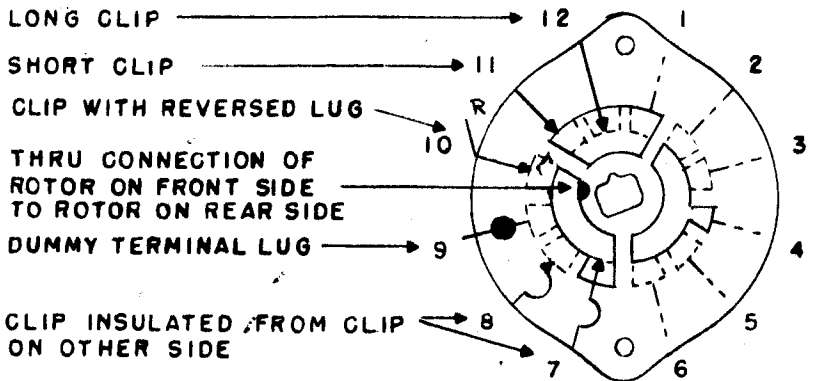
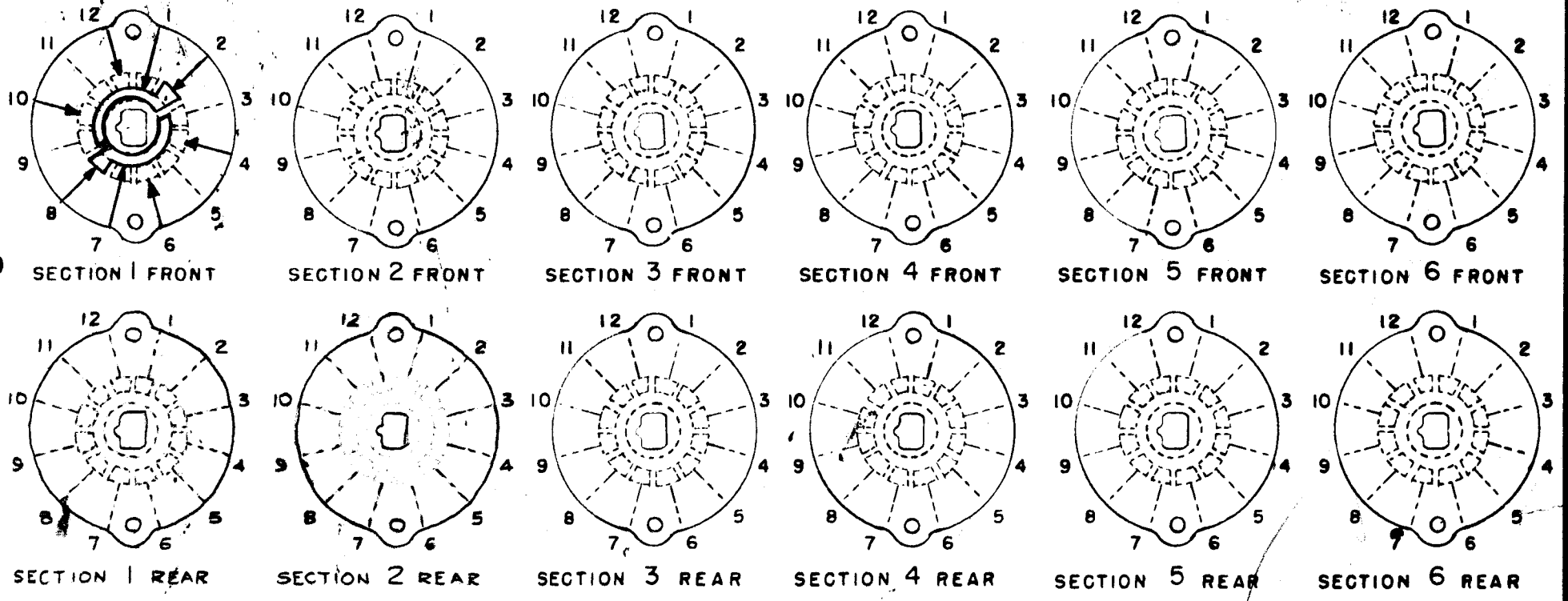
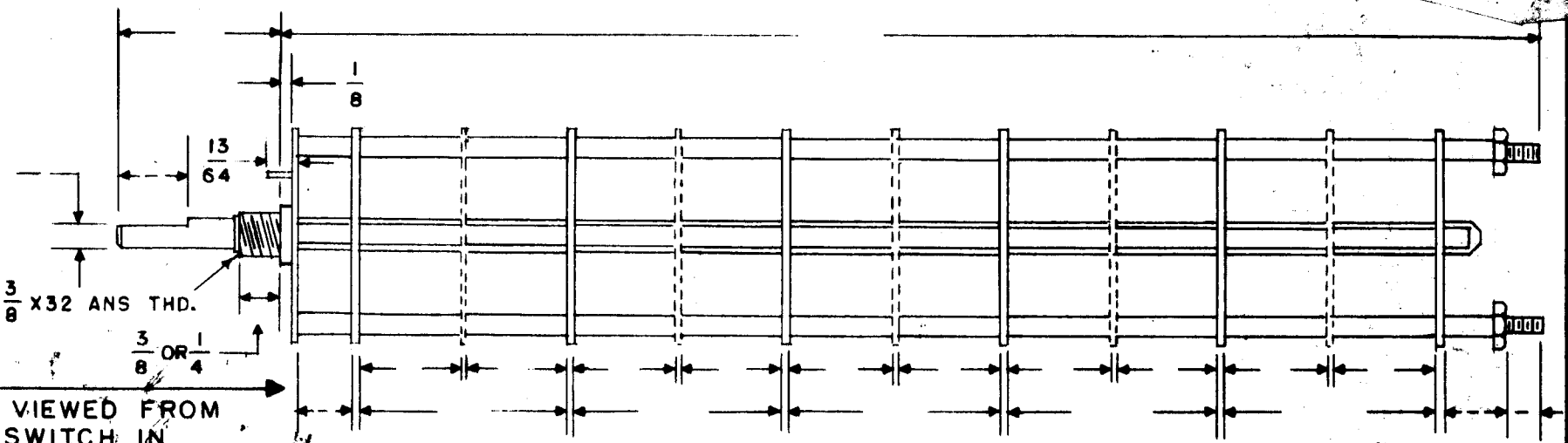
MATERIAL: (IF NOT SPECIFIED, SILVER PLATED BRASS WILL BE SUPPLIED)  
 SILVER PLATED BRASS X SILVER ALLOY \_\_\_

INSULATION: BAKELITE \_\_\_ CERAMIC X  
 SPECIFY IMPREGNATION IF REQUIRED N/A

FINISH REQUIREMENTS: COMMERCIAL X ARMY \_\_\_ NAVY \_\_\_  
 SALT TEST (IF ANY GIVE DETAILS) N/A

HARDWARE: SUPPLY  
 \_\_\_ 3/8-32 NUTS \_\_\_ ACROS FLATS MAT. \_\_\_ PLATING \_\_\_  
 \_\_\_ 3/8 INT TOOTH LOCKWASHERS MAT. \_\_\_ PLATING \_\_\_

FRONT & REAR SECTIONS VIEWED FROM FRONT OR KNOB END OF SWITCH IN EXTREME COUNTER-CLOCKWISE POSITION



OUTLINE ROTOR BLADES AS SHOWN ABOVE WITH SWITCH IN EXTREME COUNTER-CLOCKWISE POSITION

OAK SWITCH  
 TYPE - H **HC** DH DHC QH  
 QDH QHC QDHC  
 (CIRCLE-DESIRED TYPE)

SYMBOLS USED IN MARKING PRINT →

C	1	SHORT CLIP ADDED AT POSITION 6	7-9-63	9488				
B	2	Base Contacts Deleted POS. 6 DELETED FROM SEC. 1 FRONT ARROW HEADS ADDED TO FRONT + REAR SEC.	3-7-60					
A	-		3/1/60					

ISSUE		ITEM	CHANGED FROM	DATE	CH. NO.	DEPTS	CHECKER	ENG. APP.
TOLERANCES				SCALE:				
DEC. DIM. ±				MAXIMUM ALLOWABLE TOLERANCES HAVE BEEN DETERMINED AND ANY DEVIATIONS WILL BE CAUSE FOR REJECTION. REMOVE ALL BURRS AND SHARP EDGES				
FRAC. DIM. ±								
ANGULAR DIM. ±								

REQ. PER UNIT	MODEL	PROJECT NO.	ASS'Y. NO.	DATE
1	GPT-40K			2-5-60
USED ON				

REQ. ITEM	PART NO.	DESCRIPTION	SYMBOL
		THE TECHNICAL MATERIEL CORP. MAMARONECK, NEW YORK	
STOCK SIZE		WAFER, SWITCH	
MATERIAL		ROTARY	
TYPE & TEMPER		HEAT TREAT. SPEC.	DRAWN
			CHECKED
			FINAL APPROVAL
FINISH & SPEC. NO.		ELEC. DES. APP.	MECH. DES. APP.

WS-109