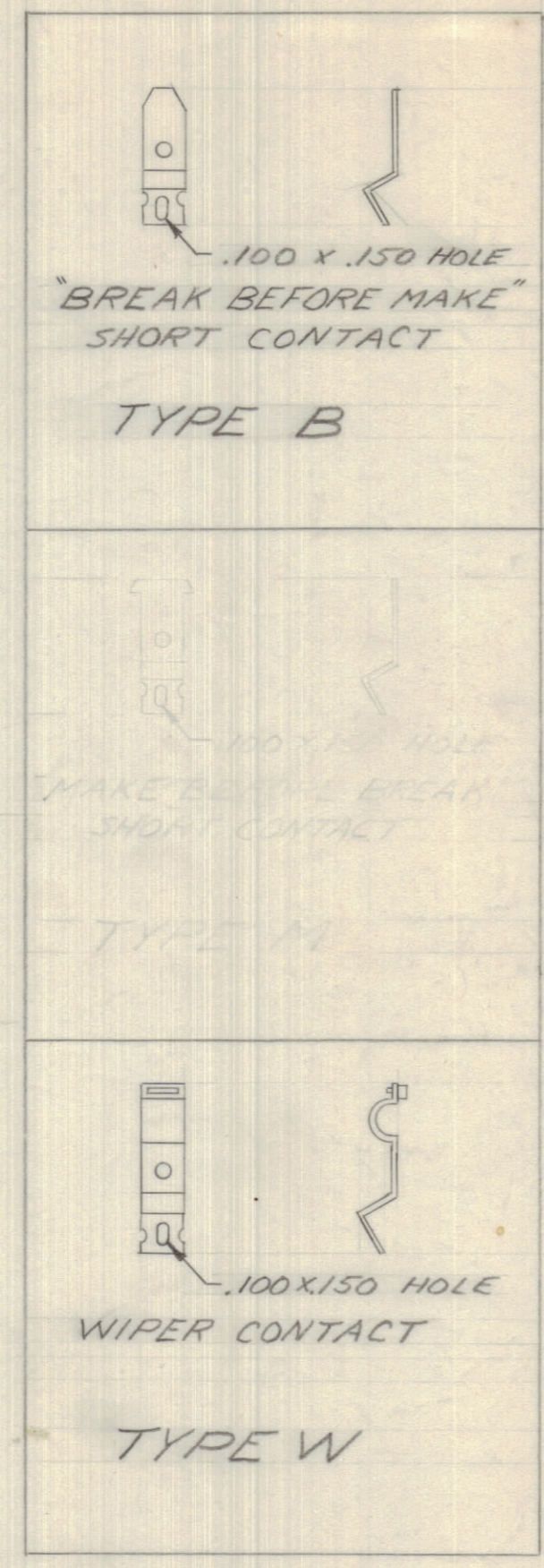


IF IT IS FOUND DESIRABLE TO CHANGE ANY TOLERANCE OR OTHER DETAIL SPECIFIED ON THIS DRAWING NOTIFY THE PURCHASER PROMPTLY.		DIMENSIONS IN INCHES UNLESS OTHERWISE SPECIFIED					
MAXIMUM ALLOWABLE TOLERANCES HAVE BEEN DETERMINED AND DEVIATIONS WILL BE CAUSE FOR REJECTION. REMOVE ALL BURRS AND SHARP EDGES.							
ISSUE	ITEM	CHANGED FROM	DATE	CH. NO.	DRAFTS	CHECKER	ENG. APP.
X		ENG RELEASE	8 NOV 71		DR.		

TMC PART NO	ASSEMBLE CONTACT TYPE SHOWN IN POS, SHOWN											
	POS 1	POS 2	POS 3	POS 4	POS 5	POS 6	POS 7	POS 8	POS 9	POS 10	POS 11	POS 12
WS10007-1	B	B	B	-	-	-	-	-	-	-	-	W
WS10007-2	B	B	B	B	-	W	-	-	-	-	-	-
WS10007-3	B	B	B	B	B	B	B	B	B	-	-	W
WS10007-4	-	B	B	B	B	B	B	B	B	-	-	W

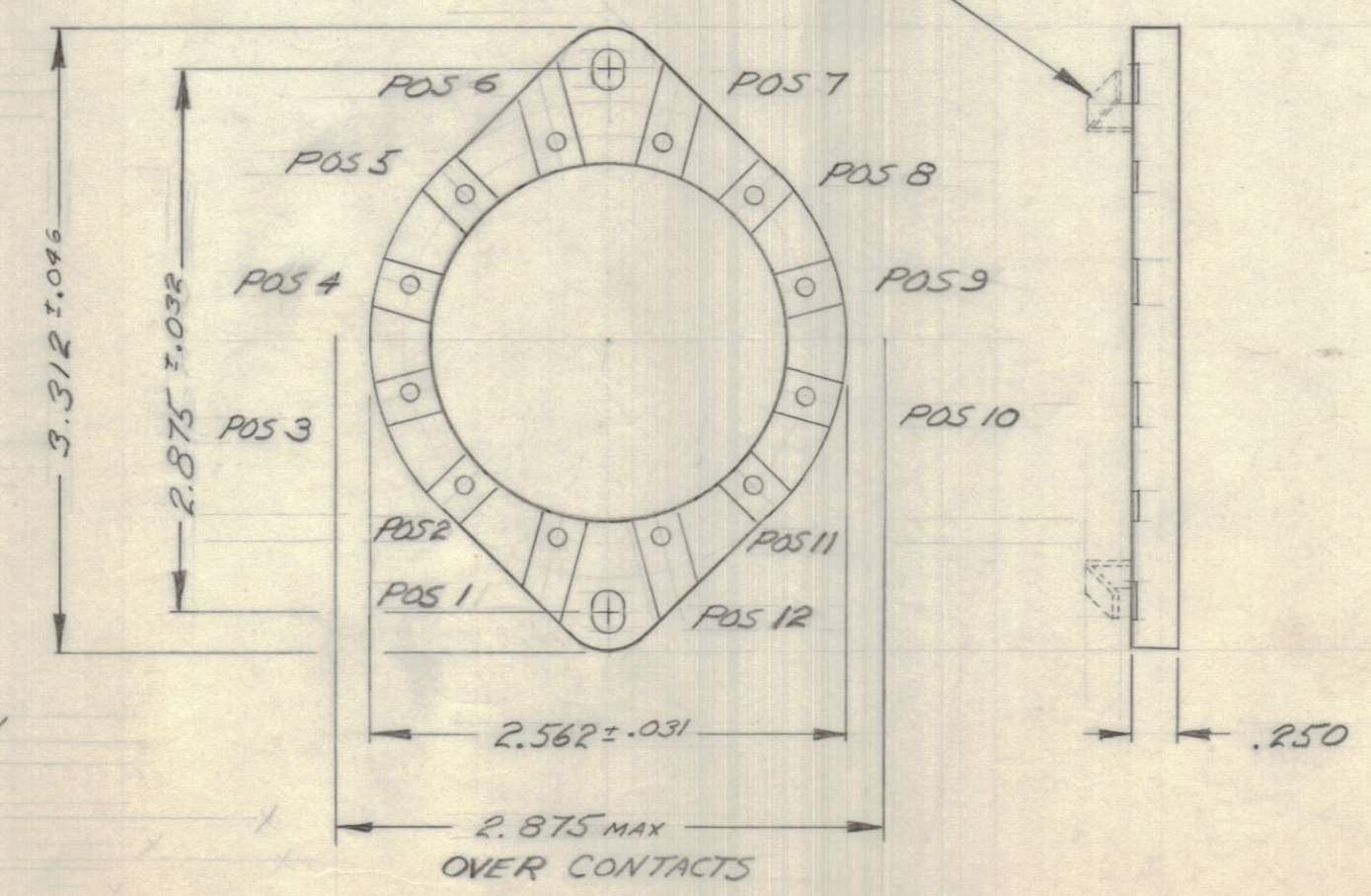
REQ.	ITEM	PART NO.	DESCRIPTION	SYMBOL
------	------	----------	-------------	--------

SEE CHART FOR CONTACT TO BE ASSEMBLED IN POSITIONS



WS10007 X

ASSEMBLE CONTACTS ON SIDE SHOWN



2. WAFER MFG TO ASSEMBLE CONTACT IN APPROPRIATE POSITIONS AS PER CHART.
1. MIN FLASHOVER - 7KV PEAK.
MAX CURRENT - 20 AMP.

NOTE:

STANDARD DRAWING

STOCK SIZE		TMC (Canada) LIMITED OTTAWA ONTARIO	
MATERIAL	WEIGHT PER FC.	WAFER, ROTARY SWITCH	
TYPE & TEMPER		D REID	
HEAT TREAT. SPEC.		CHECKED	FINAL APPROVAL
FINISH & SPEC. NO.		WS10007 X	

TOLERANCES		SCALE: 1/1
ALL OTHERS	DEC. DIM. ± .015 FRC. DIM. ± .004 ANGULAR DIM. ± .030	DRILL, PUNCH, COMMERCIAL STOCK SIZES AND MANUFACTURERS TOLERANCES ARE NOT INCLUDED.

MODEL	PROJECT NO.	ASSY. NO.	DATE
			NOV 8 / 71