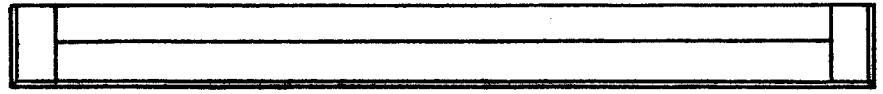


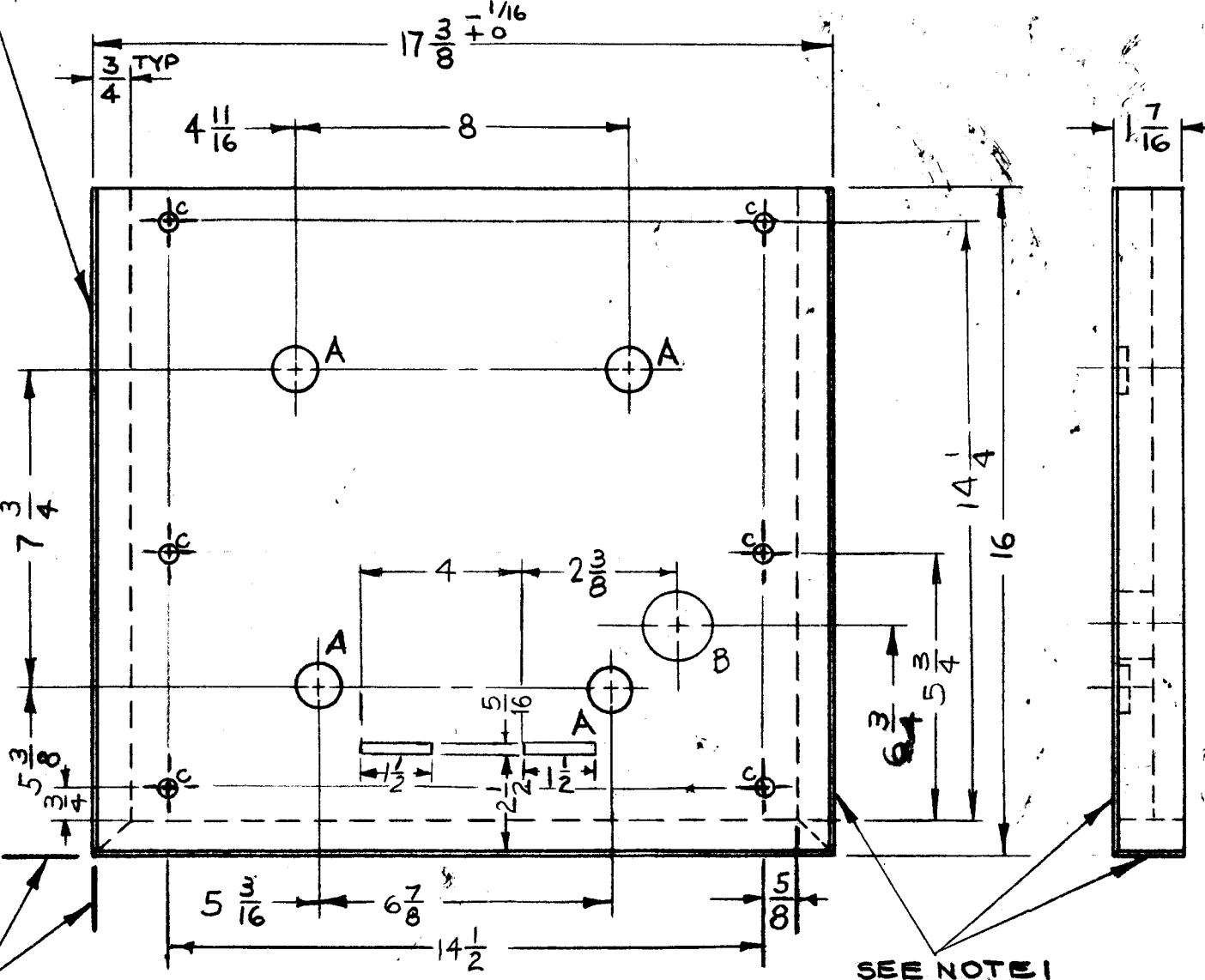
WD140 C

REVISIONS

SYM	DESCRIPTION	DATE	E.M.N. NO.	DRAFT	CHKD	APPD
X	EXPERIMENTAL RELEASE	12.8.64	X	NB		
Ø	ORIGINAL RELEASE FOR PRODUCTION	1-26-65	Ø	P.T.		
A	"C" DRILL HOLES 1/16 X 1/4 DEEP & REQD, NOTE NO. 2. SIX C HOLES F' SEENOTE #2 ADDED. A HOLE 1/8 WAS 1/4 - B HOLE 1 WAS 1 5/8, 17 3/8 WAS 17 5/8, 4 1/16 WAS 4 13/16, 7 3/4 WAS 7 1/2, 5 3/8 WAS 4 5 3/16 WAS 5 5/16, 6 7/8 WAS 7, 6 3/4 WAS 5 1/2, SLOT 1 1/2 X 5/16 ADDED	6 24 65	14328	D.V.V.		JEE
B	"C" HOLE DESCRIPTION FR. BOTTOM ADDED SLOT 1 1/2 X 5/16 ADDED - SEE NOTE #2 DELETED	12/6/65	15316	H.V.		JEE
C	DIM. 2 3/8 WAS 1 5/8 ; 15ØD. WAS 1" D.; 5 3/4 WAS 5 1/2	3-28-66	16021	H.L.A.		JEE



SEE NOTE 1



LOCATING BASE LINES

TOP VIEW SHOWN

SEE NOTE 1

HOLE	DESCRIPTION	REQ
A	1/8 DIA C'BORE 1/8 DEEP	4
B	1 5/8 DIA.	1
C	1/16 DIA X 1/4 DEEP FR. BOTTOM	6

NOTE:

1. MICARTA #HD-1136
SATIN GRAY MAHOGANY

REQ'D.	ITEM	PART NUMBER	DESCRIPTION	SYMBOL
M. STURMER LIST OF MATERIAL				
MATERIAL			THE TECHNICAL MATERIEL CORP.	
3/4 THICK WHITE PINE PLYWOOD			MAMARONECK, NEW YORK	
FINISH			TITLE	
SEE NOTE 1			TRAY, EQUIPMENT	
UNLESS OTHERWISE SPECIFIED DIMENSIONS ARE IN INCHES AND INCLUDE CHEMICALLY APPLIED OR PLATED FINISHES			DRAWN	DATE
			NB	12.8.64
			CHECKED	DATE
				1-22-65
			ELECT. DES.	DATE
				1-22-65
			MECH. DES.	DATE
			WD140	
			C	

1	COPA-2	A4010
Q'TY./UNIT	MODEL USED ON	ASS'Y. NO.
SCALE	CODE	
1/4 : 1	A	

THE CONTENTS OF THIS DRAWING ARE THE EXCLUSIVE PROPERTY OF THE TECHNICAL MATERIEL CORP. ITS UNAUTHORIZED USE OR REPRODUCTION IN WHOLE OR IN PART IS STRICTLY FORBIDDEN.

NOTES