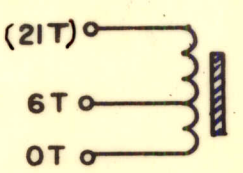
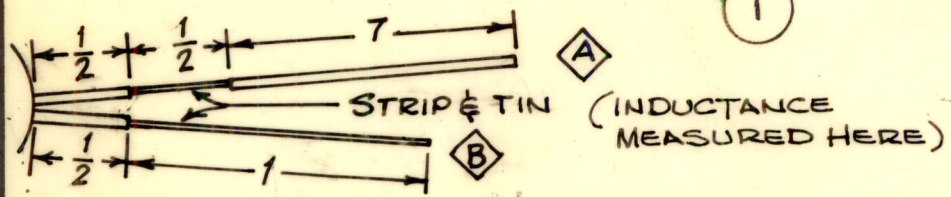
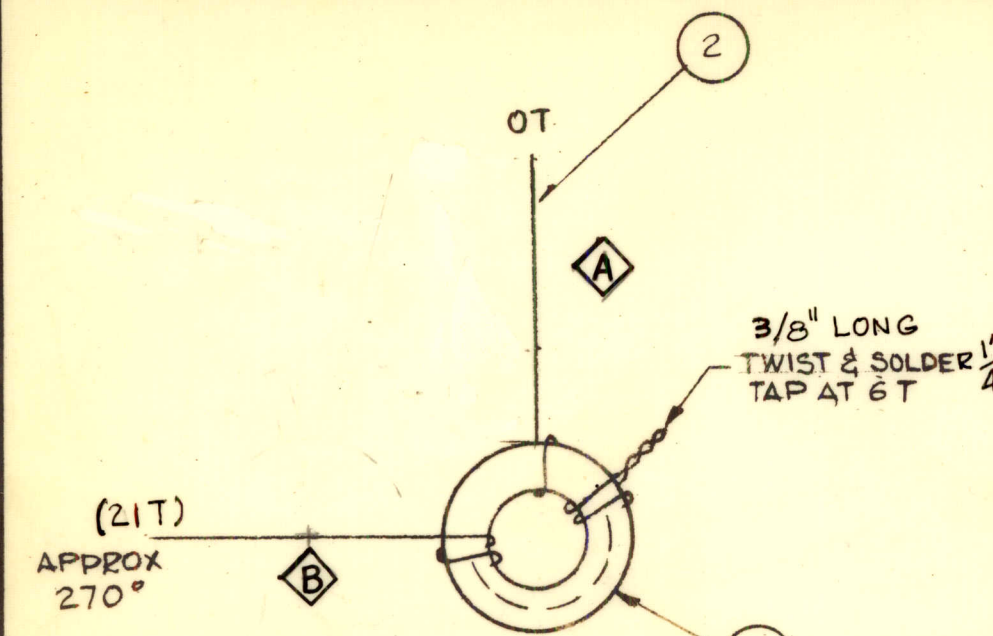


|               |         |            |         |        |   |
|---------------|---------|------------|---------|--------|---|
| REQ. PER UNIT | USED ON |            |         | TZ 200 | A |
|               | MODEL   | ASS'Y. NO. | DATE    |        |   |
| 1             | CHG-3   | AX 552     | 2-16-65 |        |   |



SCHEMATIC (SYMBOL T1015)

- PROCEDURE -
- 1- WIND APPROX. 21 TURNS IN THE DIRECTION SHOWN, EQUALLY SPACED OVER THE ANGLE SHOWN, WITHOUT OVERLAPPING TURNS.
  - 2- TAP AT THE NUMBER OF TURNS AS SHOWN.
  - 3- TURNS MAY BE ADDED OR REMOVED AS NEEDED TO MEET INDUCTANCE.
  - 4- STAKE LEADS SECURELY WITH GL102.
  - 5- BAKE FOR 1/2 HR. AT 215°F. TO REMOVE MOISTURE
  - 6- COAT COIL & CORE WITH GL102 & BAKE 1/2 HR. AT 215°F.

ELECTRICAL SPECIFICATION

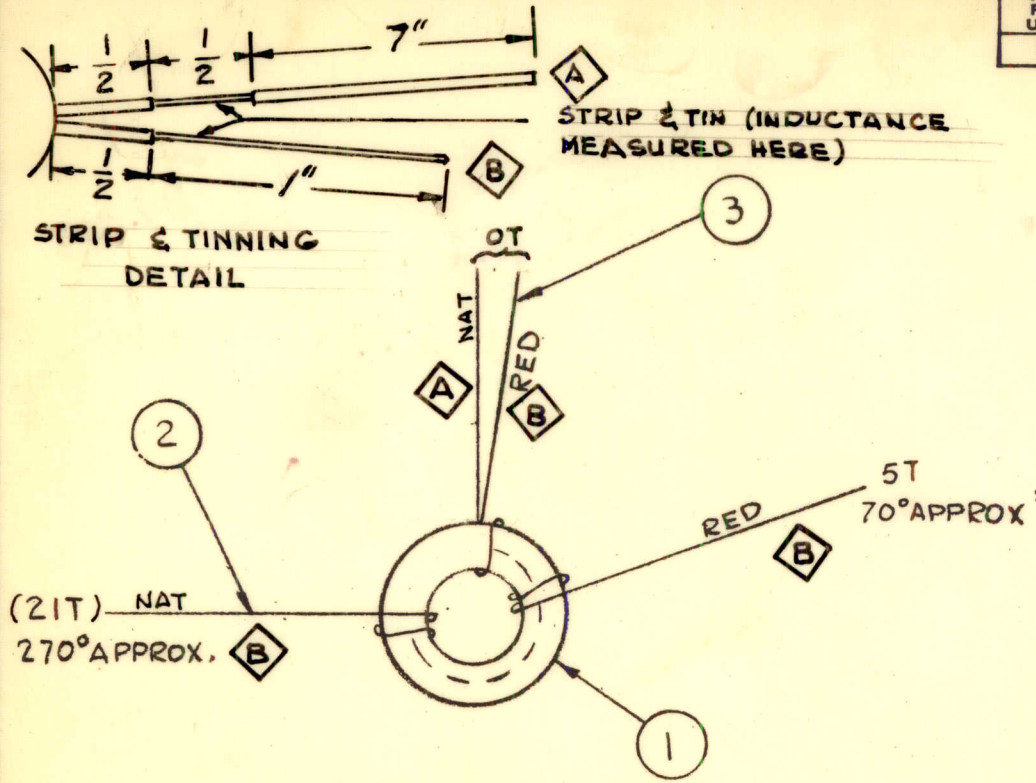
$L = 1.9 \mu h \pm 0.04 \mu h$   
 $Q = 180 \pm 20$  AT 10MC  
 $C_{dist} = 0.7 \pm 0.5$  MMF

|    |  |         |       |        |                    |                    |
|----|--|---------|-------|--------|--------------------|--------------------|
| A  | ADD. A & B IDENT. ; ADD. DETAIL - 1/2 & 1" DELE. | 6-23-65 | 14938 | HCA    | <i>[Signature]</i> | <i>[Signature]</i> |
| Ø  | ORIGINAL RELEASE FOR PRODUCTION                  | 4-14-65 | Ø     | G.L.   | <i>[Signature]</i> | <i>[Signature]</i> |
| X1 | COMPLETELY REVISED                               | 3-15-65 |       | G.D.L. | <i>[Signature]</i> | <i>[Signature]</i> |
| X  | EXPER. RELEASE                                   | 2-7-65  |       | G.D.L. |                    |                    |

|   |   |             |                   |             |
|---|---|-------------|-------------------|-------------|
| X | 4 | BS 100      | SOLDER, TIN ALLOY |             |
| X | 3 | GL102       | Q-MAX             |             |
| X | 2 | WI 141-24-9 | WIPE, ELEC. MAG.  |             |
| 1 | 1 | CI 127-1    | CORE, TOROID      |             |
|   |   |             | J-ANGER           | DESCRIPTION |
|   |   |             |                   | SYMBOL      |

|   |            |   |              |   |
|---|------------|---|--------------|---|
| UNLESS OTHERWISE SPECIFIED DIMENSIONS ARE IN INCHES AND INCLUDE CHEMICALLY APPLIED OR PLATED FINISHES |            | SCALE                                     | DO NOT SCALE |   |
| DECIMALS<br>.X ± .05<br>.XX ± .01<br>.XXX ± .005  | TOLERANCES | FRACTIONS<br>± 1/64<br>ANGLES<br>± 0° 30' | CODE         | A |

|                    |  |  |                    |                    |
|--------------------|--|--|--------------------|--------------------|
| STOCK SIZE         |  | THE TECHNICAL MATERIEL CORP.<br>MAMARONECK, NEW YORK |                    |                    |
| MATERIAL           |  | TRANSFORMER, RF                                      |                    |                    |
| TYPE & TEMPER      |  | DRIVER BAND #5                                       |                    |                    |
| HEAT TREAT. SPEC.  |  | G.D.L.   | <i>[Signature]</i> | <i>[Signature]</i> |
| FINISH & SPEC. NO. |  | DRAWN  | CHECKED            | FINAL APPROVAL     |
|                    |  | <i>[Signature]</i>                                   |                    |                    |
|                    |  | ELEC. DES. APP.                                      | MECH. DES. APP.    |                    |
|                    |  |  |                    | TZ 200 A           |



|               |         |            |         |        |   |
|---------------|---------|------------|---------|--------|---|
| REQ. PER UNIT | USED ON |            |         | TZ 201 | B |
|               | MODEL   | ASS'Y. NO. | DATE    |        |   |
| 1             | CHG-3   | AX 552     | 2-16-65 |        |   |

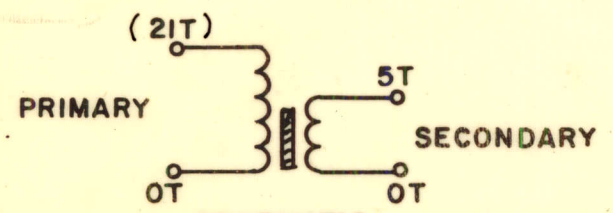
- PROCEDURE -
- 1- WIND PRIMARY IN THE DIRECTION SHOWN, EQUALLY SPACED OVER THE ANGLE SHOWN, WITHOUT OVERLAPPING TURNS.
  - 2- WIND SECONDARY BETWEEN TURNS OF PRIMARY. NUMBER OF TURNS AS SHOWN.
  - 3- NUMBER OF TURNS OF PRIMARY IS APPROX. AND TURNS MAY BE ADDED OR REMOVED TO MEET INDUCTANCE.
  - 4- STAKE LEADS SECURELY WITH GL 102.
  - 5- BAKE FOR 1/2 HR. AT 215°F. TO REMOVE MOISTURE.
  - 6- COAT COIL & CORE WITH GL 102 & BAKE 1/2 HR. AT 215°F.

ELEC. SPECIFICATION

PRI. L = 1.9 μh ± 0.04 μh

Q = 160 MIN AT 10 MC

C<sub>dist</sub> 0.7 ± 0.5 MMF

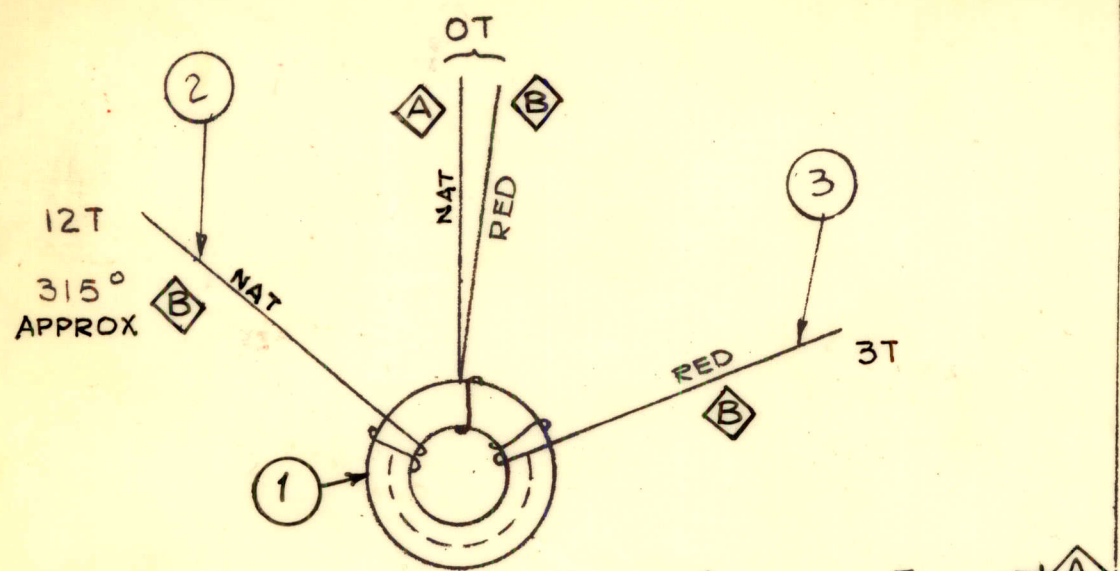


SCHEMATIC (SYMBOL T1016)

|                    |   |                   |  |          |
|--------------------|---|-------------------|--|----------|
| X                  | 4 | GL 102            | Q-MAX  |          |
| X                  | 3 | WI 41-26-2        | WIRE, ELEC. MAG.                                     |          |
| X                  | 2 | WI 41-24-9        | WIRE, ELEC. MAG.                                     |          |
| 1                  | 1 | CI 127-1          | CORE, TOROID   |          |
| REQ. ITEM          |   | PART NO.          | J. ANGER DESCRIPTION                                 | SYMBOL   |
|                    |   |                   | THE TECHNICAL MATERIEL CORP.<br>MAMARONECK, NEW YORK |          |
| STOCK SIZE         |   |                   | TRANSFORMER, RF                                      |          |
| MATERIAL           |   |                   | OUTPUT BAND #5                                       |          |
| TYPE & TEMPER      |   | HEAT TREAT. SPEC. | DRAWN  | CHECKED  |
|                    |   |                   | G.D.L. 2-16-65                                       | J. Anger |
| FINISH & SPEC. NO. |   | ELEC. DES. APP.   | MECH. DES. APP.                                      | TZ 201 B |

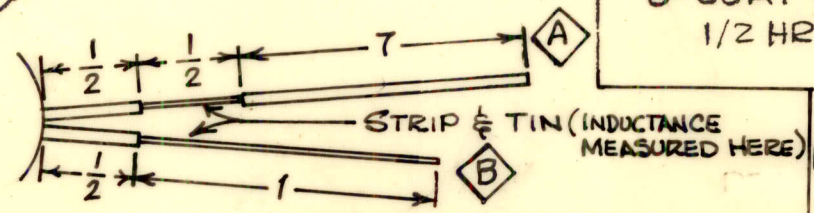
|   |  |   |           |        |         |           |
|---|--|---|-----------|--------|---------|-----------|
| B   | "Q" VALUE WAS 180 ± 20                               | 1-6-65                                    | 17616     | W.T.W. | J.C.S.  |           |
| A   | DIMS 1/2 & 1" DELETED<br>"A", "B" IND. & DETAIL ADD. | 6-23-65                                   | 14338     | G.D.L. | H.L.    | Ju        |
| Ø   | ORIGINAL RELEASE FOR PRODUCTION                      | 4-14-65                                   | Ø         | Ø      |         |           |
| X1  | COMPLETELY REVISED                                   | 3-15-65                                   |           | G.D.L. |         | Ju        |
| X   | EXPER. RELEASE                                       | 2-17-65                                   |           | G.D.L. |         |           |
| SYM   | DESCRIPTION  | DATE                                      | CH. NO.   | DRAFTS | CHECKER | ENG. APP. |
| UNLESS OTHERWISE SPECIFIED<br>DIMENSIONS ARE IN INCHES AND INCLUDE<br>CHEMICALLY APPLIED OR PLATED FINISHES |  | SCALE<br>DO NOT SCALE                     |           |        |         |           |
| DECIMALS<br>.X ± .05<br>.XX ± .01<br>.XXX ± .005  | TOLERANCES   | FRACTIONS<br>± 1/64<br>ANGLES<br>± 0° 30' | CODE<br>A |        |         |           |

|               |         |            |         |          |
|---------------|---------|------------|---------|----------|
| REQ. PER UNIT | USED ON |            |         | TZ 202 C |
|               | MODEL   | ASS'Y. NO. | DATE    |          |
| 2             | CHG-3   | AX 553     | 2-16-65 |          |

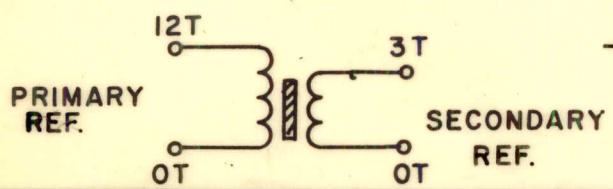


- PROCEDURE -
- 1- WIND PRIMARY IN THE DIRECTION SHOWN, EQUALLY SPACED OVER THE ANGLE SHOWN, WITHOUT OVERLAPPING TURNS.
  - 2- WIND SECONDARY BETWEEN TURNS OF PRIMARY. NUMBER OF TURNS AS SHOWN.
  - 3- PRIMARY TURNS MAY BE PUSHED TOGETHER OR SPREAD APART AS NEEDED TO MEET INDUCTANCE.
  - 4- STAKE LEADS SECURELY WITH GL102.
  - 5- BAKE FOR 1/2 HR. AT 215°F. TO REMOVE MOISTURE.
  - 6- COAT COIL & CORE WITH GL102 & BAKE 1/2 HR. AT 215°F.

SCHEMATIC (SYMBOL T1020, T1017)



STRIP & TINNING DETAIL



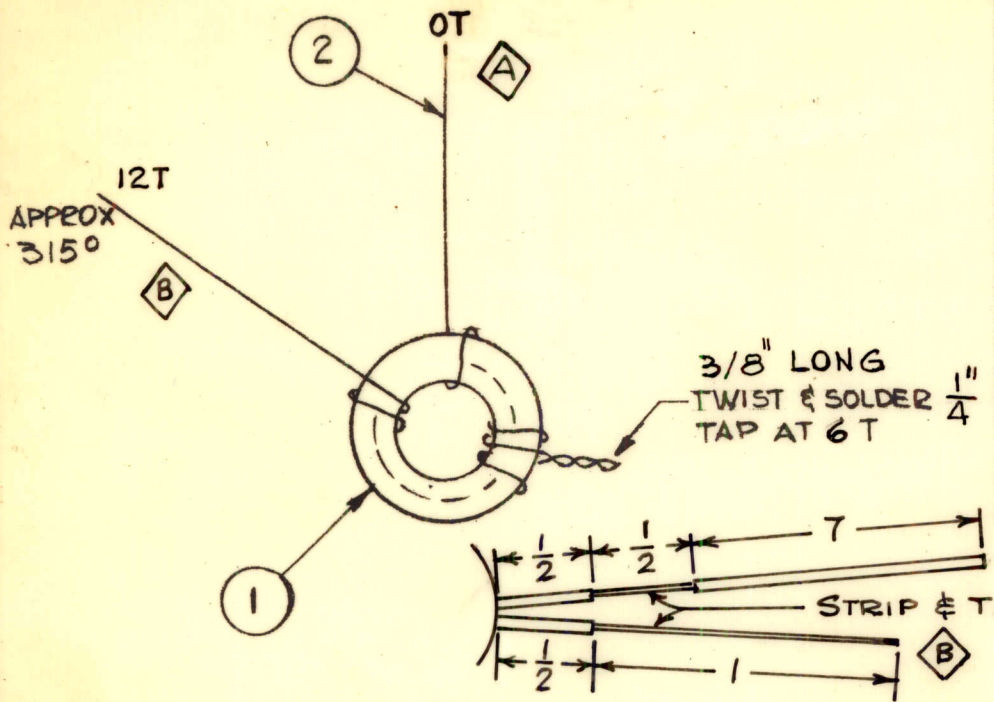
ELEC. SPECIFICATION

$L = 0.655 \mu h \pm 0.015 \mu h$   
 Pri.  $Q = 160$  OR GREATER AT 14 MC  
 $C_{dist} 0.7 \pm 0.6$  MMF

|   |  |  |             |               |            |            |
|---|--|--|-------------|---------------|------------|------------|
| C   | Q TOL. WAS $\pm 15$ , OR GREATER ADDED                 | 6-17-66  | 16416       | <i>MSB</i>    |            |            |
| B   | SYMBOL AND REF. ADDED                                  | 8-27-65  | 14735       | <i>W.V.</i>   | <i>gcl</i> | <i>MSB</i> |
| A   | DELE. DIM. 1/2 & 1; ADD "A"<br>"B" IDENT.; ADD. DETAIL | 6-23-65  | 14338       | <i>H.L.A.</i> | <i>gcl</i> | <i>MSB</i> |
| $\emptyset$   | ORIGINAL RELEASE FOR PRODUCTION                        | 4-14-65  | $\emptyset$ | <i>gcl</i>    |            |            |
| X <sub>1</sub>  | COMPLETELY REVISED                                     | 3-15-65  |             | <i>G.D.L.</i> | <i>M</i>   | <i>Jr</i>  |
| X   | EXPER. RELEASE   | 2-18-65  |             | <i>G.D.L.</i> |            |            |
| SYM   | DESCRIPTION  | DATE   | CH. NO.     | DRAFTS        | CHECKER    | ENG. APP.  |
| UNLESS OTHERWISE SPECIFIED DIMENSIONS ARE IN INCHES AND INCLUDE CHEMICALLY APPLIED OR PLATED FINISHES |  | SCALE DO NOT SCALE                                     |             |               |            |            |
| DECIMALS<br>.X $\pm .05$<br>.XX $\pm .01$<br>.XXX $\pm .005$  | TOLERANCES   | FRACTIONS<br>$\pm 1/64$<br>ANGLES<br>$\pm 0^\circ 30'$ | CODE<br>A   |               |            |            |

|  |   |                   |                             |
|--|---|-------------------|-----------------------------|
| X  | 4 | GL 102            | Q-MAX                       |
| X  | 3 | WI41-26-2         | WIRE, ELEC. MAG.            |
| X  | 2 | WI41-22-9         | WIRE, ELEC. MAG.            |
| 1  | 1 | CI127-1           | CORE, TOROID                |
| REQ. ITEM  |   | PART NO.          | J. ANGER DESCRIPTION SYMBOL |
| THE TECHNICAL MATERIEL CORP.<br>MAMARONECK, NEW YORK |   |                   |                             |
| STOCK SIZE   |   |                   |                             |
| TRANSFORMER, RF                                      |   |                   |                             |
| MATERIAL   |   |                   |                             |
| OUTPUT BAND # 6                                      |   |                   |                             |
| TYPE & TEMPER  |   | HEAT TREAT. SPEC. | DRAWN                       |
|  |   |                   | CHECKED                     |
|  |   |                   | FINAL APPROVAL              |
| FINISH & SPEC. NO.                                   |   | ELEC. DES. APP.   | MECH. DES. APP.             |
|  |   | <i>J. Anger</i>   | <i>J. Anger</i>             |
|  |   |                   | TZ 202 C                    |

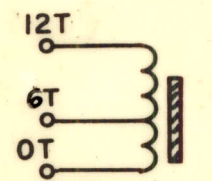
|               |         |            |         |         |
|---------------|---------|------------|---------|---------|
| REQ. PER UNIT | USED ON |            |         | TZ204 C |
|               | MODEL   | ASS'Y. NO. | DATE    |         |
| 1             | CHG-3   | AX 553     | 2-16-65 |         |



- PROCEDURE -
- 1- WIND 12 TURNS IN THE DIRECTION SHOWN, EQUALLY SPACED OVER THE ANGLE SHOWN, WITHOUT OVERLAPPING TURNS.
  - 2- TAP AT THE NUMBER OF TURNS AS SHOWN.
  - 3- TURNS MAY BE PUSHED TOGETHER OR SPREAD APART AS NEEDED TO MEET INDUCTANCE.
  - 4- STAKE LEADS SECURELY WITH GL102.
  - 5- BAKE FOR 1/2 HR. AT 215°F. TO REMOVE MOISTURE
  - 6- COAT COIL & CORE WITH GL102 & BAKE 1/2 HR. AT 215°F.

**ELECTRICAL SPECIFICATION**

$L = 0.655 \pm 0.015 \mu h$   
 $Q = 145 \text{ MIN AT } 14 \text{ MC}$   
 $C_{dist} = 0.7 \pm 0.6 \text{ MMF}$



SCHEMATIC (T1019)

STRIP & TINNING DETAIL

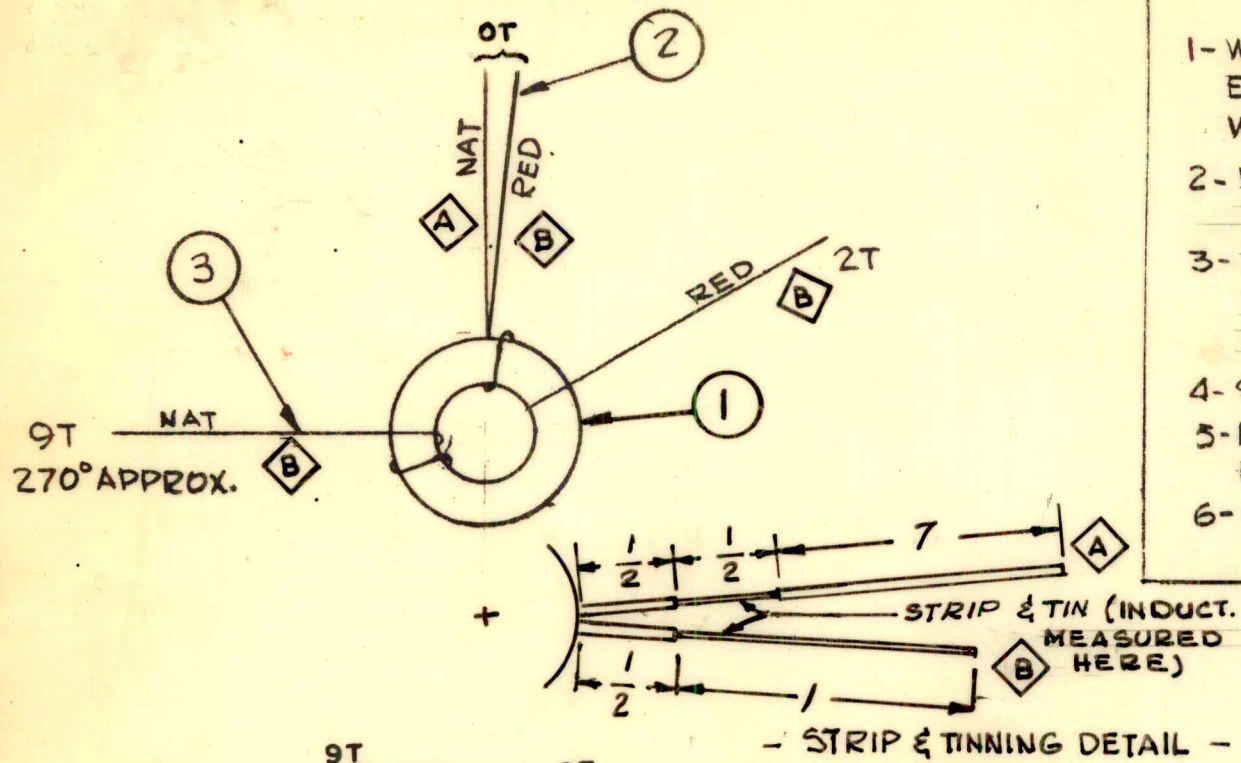
|           |   |             |                             |
|-----------|---|-------------|-----------------------------|
| X         | 4 | BS 100      | SOLDER, TIN ALLOY           |
| X         | 3 | GL102       | Q-MAX                       |
| X         | 2 | WI 141-22-9 | WIPE, ELEC. MAG.            |
| 1         | 1 | CI 127-1    | CORE, TOROID                |
| REQ. ITEM |   | PART NO.    | J- ANGER DESCRIPTION SYMBOL |

|     |  |         |         |        |         |           |  |
|-----|--|---------|---------|--------|---------|-----------|--|
| C   | "Q" VALUE WAS 160 ± 15                                 | 1-6-67  | 17616   | WJO    |         |           |  |
| B   | 6T WAS 4T  | 10/1/65 | 14915   | F.V.V. |         |           |  |
| A   | DELE. DIM. 1/2 & 1; ADD. "A" & "B" IDENT.; ADD. DETAIL | 6-23-65 | 14338   | H.A.   |         |           |  |
| Ø   | ORIGINAL RELEASE FOR PRODUCTION                        | 4-14-65 | Ø       | Ø      |         |           |  |
| X1  | COMPLETELY REVISED                                     | 3-15-65 |         | G.D.L. |         |           |  |
| X   | EXPER. RELEASE   | 2-17-65 |         | G.D.L. |         |           |  |
| SYM | DESCRIPTION  | DATE    | CH. NO. | DRAFTS | CHECKER | ENG. APP. |  |

|   |            |   |           |
|---|------------|---|-----------|
| UNLESS OTHERWISE SPECIFIED DIMENSIONS ARE IN INCHES AND INCLUDE CHEMICALLY APPLIED OR PLATED FINISHES |            | SCALE<br><b>DO NOT SCALE</b>              |           |
| DECIMALS<br>.X ± .05<br>.XX ± .01<br>.XXX ± .005  | TOLERANCES | FRACTIONS<br>± 1/64<br>ANGLES<br>± 0° 30' | CODE<br>A |

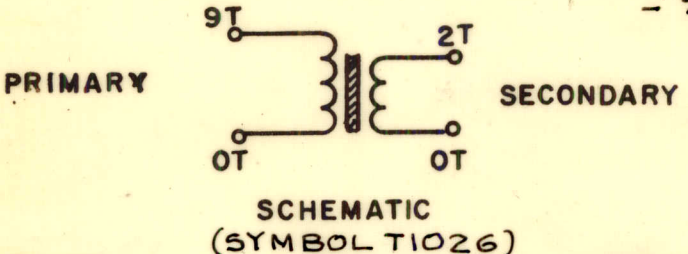
|                    |                   |  |                       |
|--------------------|-------------------|--|-----------------------|
| STOCK SIZE         |                   | THE TECHNICAL MATERIEL CORP.<br>MAMARONECK. NEW YORK |                       |
| MATERIAL           |                   | TRANSFORMER, RF<br>DRIVER BAND*6                     |                       |
| TYPE & TEMPER      | HEAT TREAT. SPEC. | DRAWN<br>G.D.L.                                      | CHECKED<br>Jh         |
| FINISH & SPEC. NO. |                   | ELEC. DES. APP.<br>Jh                                | MECH. DES. APP.<br>Jh |
|                    |                   | FINAL APPROVAL<br><b>TZ204 C</b>                     |                       |

|                    |                |                      |                 |          |
|--------------------|----------------|----------------------|-----------------|----------|
| REQ. PER UNIT<br>1 | USED ON        |                      |                 | TZ 205 B |
|                    | MODEL<br>CHG-3 | ASS'Y. NO.<br>AX 555 | DATE<br>2-16-65 |          |



- PROCEDURE -
- 1- WIND PRIMARY IN THE DIRECTION SHOWN, EQUALLY SPACED OVER THE ANGLE SHOWN, WITHOUT OVERLAPPING TURNS.
  - 2- WIND SECONDARY BETWEEN TURNS OF PRIMARY. NUMBER OF TURNS AS SHOWN.
  - 3- PRIMARY TURNS MAY BE PUSHED TOGETHER OR SPREAD APART TO MEET INDUCTANCE.
  - 4- STAKE LEADS SECURELY WITH GL 102.
  - 5- BAKE FOR 1/2 HR. AT 215°F. TO REMOVE MOISTURE.
  - 6- COAT COIL & CORE WITH GL 102 & BAKE 1/2 HR. AT 215°F.

ELEC. SPECIFICATION  
 L = 0.385  $\mu$ h  $\pm$  0.015  $\mu$ h  
 PRI. Q = GREATER THAN 135 AT 28MC  
 C<sub>dist</sub> 0.7  $\pm$  0.5 MMF

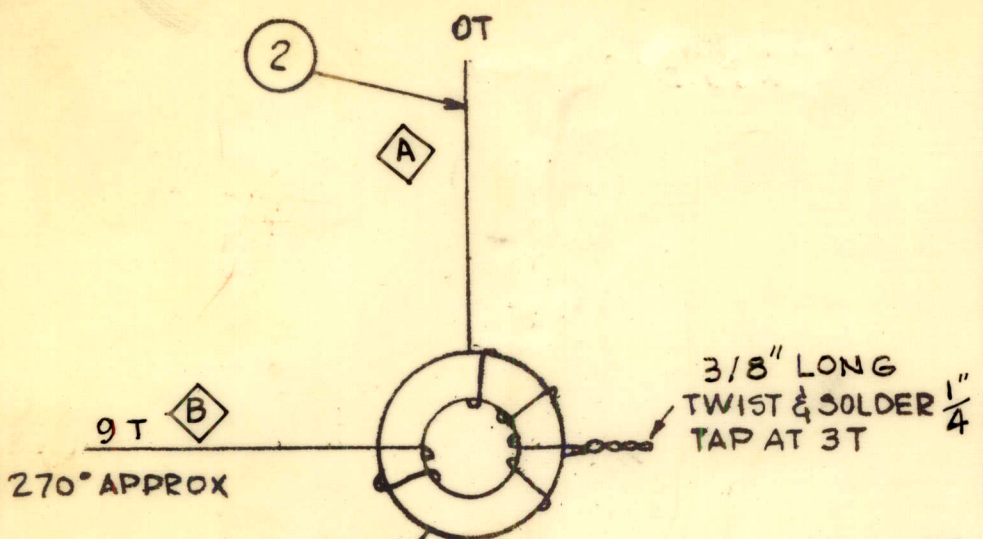


|   |   |           |                  |
|---|---|-----------|------------------|
| X | 4 | GL 102    | Q-MAX            |
| X | 3 | W141-22-9 | WIRE, ELEC. MAG. |
| X | 2 | W141-26-2 | WIRE, ELEC. MAG. |
| 1 | 1 | CI 127-1  | CORE, TOROID     |

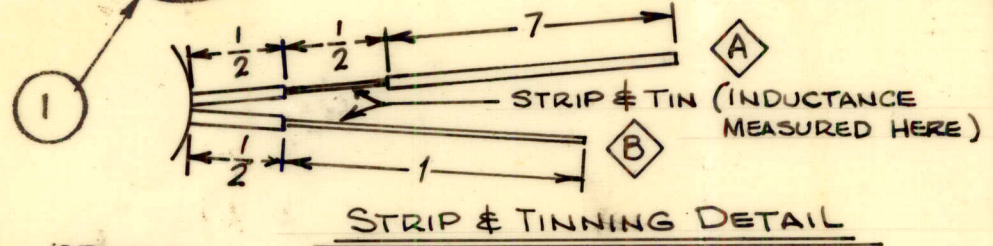
|   |                        |   |           |        |         |           |
|---|------------------------|---|-----------|--------|---------|-----------|
| SYM   | DESCRIPTION            | DATE  | CH. NO.   | DRAFTS | CHECKER | ENG. APP. |
| B   | PRI Q WAS 135 $\pm$ 15 | 7-18-66   | 16579     | RME    |         |           |
| UNLESS OTHERWISE SPECIFIED DIMENSIONS ARE IN INCHES AND INCLUDE CHEMICALLY APPLIED OR PLATED FINISHES |                        | SCALE<br>DO NOT SCALE                             |           |        |         |           |
| DECIMALS<br>.X $\pm$ .05<br>.XX $\pm$ .01<br>.XXX $\pm$ .005  | TOLERANCES             | FRACTIONS<br>$\pm$ 1/64<br>ANGLES<br>$\pm$ 0° 30' | CODE<br>A |        |         |           |

|                    |          |  |             |                 |
|--------------------|----------|--|-------------|-----------------|
| REQ. ITEM          | PART NO. | J. ANGER   | DESCRIPTION | SYMBOL          |
| STOCK SIZE         |          | THE TECHNICAL MATERIEL CORP.<br>MAMARONECK, NEW YORK |             |                 |
| MATERIAL           |          | TRANSFORMER, RF.                                     |             |                 |
| TYPE & TEMPER      |          | OUTPUT BAND #8                                       |             |                 |
| HEAT TREAT. SPEC.  |          | G.D.L. 2-16-65                                       | DRAWN       | CHECKED         |
| FINISH & SPEC. NO. |          | ELEC. DES. APP. <i>J. Anger</i>                      |             | MECH. DES. APP. |
|                    |          |  |             | TZ 205 B        |

|               |         |            |         |          |
|---------------|---------|------------|---------|----------|
| REQ. PER UNIT | USED ON |            |         | TZ 206 C |
|               | MODEL   | ASS'Y. NO. | DATE    |          |
| 2             | CHG-3   | AX 555     | 2-16-65 |          |

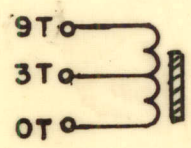


- PROCEDURE -
- 1- WIND 9 TURNS IN THE DIRECTION SHOWN, EQUALLY SPACED OVER THE ANGLE SHOWN, WITHOUT OVERLAPPING TURNS.
  - 2- TAP AT THE NUMBER OF TURNS AS SHOWN.
  - 3- TURNS MAY BE PUSHED TOGETHER OR SPREAD APART AS NEEDED TO MEET INDUCTANCE.
  - 4- STAKE LEADS SECURELY WITH GL102.
  - 5- BAKE FOR 1/2 HR. AT 215°F. TO REMOVE MOISTURE
  - 6- COAT COIL & CORE WITH GL102 & BAKE 1/2 HR. AT 215°F.



ELECTRICAL SPECIFICATION

$L = 0.385 \mu h \pm 0.015 \mu h$   
 $Q = \text{GREATER THAN } 135 \text{ AT } 28 \text{ MC.}$   
 $C_{dist} = 0.7 \pm 0.5 \text{ MMF}$



SCHEMATIC (SYMBOL T1027)

|   |   |             |                   |
|---|---|-------------|-------------------|
| X | 4 | BS 100      | SOLDER, TIN ALLOY |
| X | 3 | GL 102      | Q-MAX             |
| X | 2 | WI 141-22-9 | WIPE, ELEC. MAG.  |
|   | 1 | CI 127-1    | CORE, TOROID      |

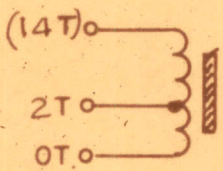
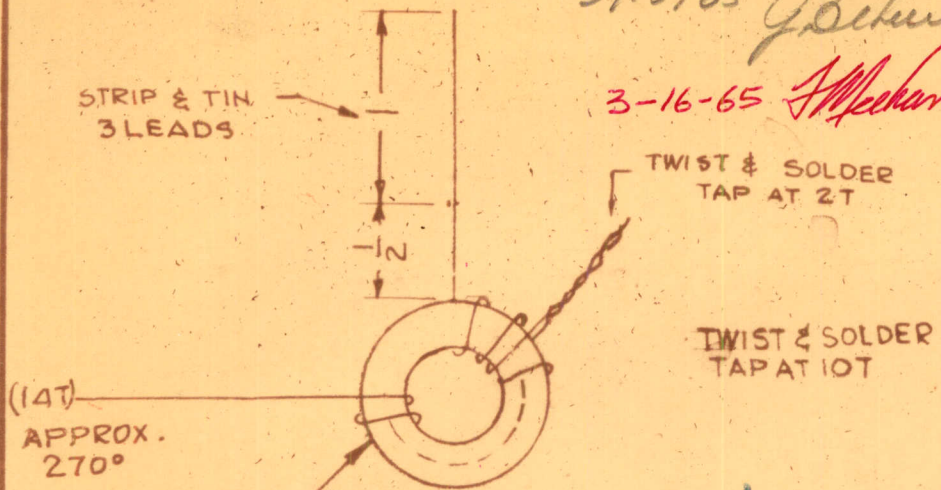
|   |                    |   |           |        |                    |           |
|---|--------------------|---|-----------|--------|--------------------|-----------|
| C   | PRI Q WAS 135 ± 15 | 7-18-66                                   | 16579     | RME    | <i>[Signature]</i> |           |
| SYM   | DESCRIPTION        | DATE                                      | CH. NO.   | DRAFTS | CHECKER            | ENG. APP. |
| UNLESS OTHERWISE SPECIFIED DIMENSIONS ARE IN INCHES AND INCLUDE CHEMICALLY APPLIED OR PLATED FINISHES |                    | SCALE<br>DO NOT SCALE                     |           |        |                    |           |
| DECIMALS<br>.X ± .05<br>.XX ± .01<br>.XXX ± .005  | TOLERANCES         | FRACTIONS<br>± 1/64<br>ANGLES<br>± 6° 30' | CODE<br>A |        |                    |           |

|                    |                   |  |                 |                |
|--------------------|-------------------|--|-----------------|----------------|
| REQ. ITEM          | PART NO.          | J- ANGER   | DESCRIPTION     | SYMBOL         |
| STOCK SIZE         |                   | THE TECHNICAL MATERIEL CORP.<br>MAMARONECK, NEW YORK |                 |                |
| MATERIAL           |                   | TRANSFORMER, RF<br>DRIVER BAND #8                    |                 |                |
| TYPE & TEMPER      | HEAT TREAT. SPEC. | DRAWN  | CHECKED         | FINAL APPROVAL |
| FINISH & SPEC. NO. |                   | ELEC. DES. APP.                                      | MECH. DES. APP. | TZ206 C        |

NO LONGER REQUIRED  
REPLACED BY CL 367

OT 3/15/65 *J. Schur*

3-16-65 *M. Mehan*



SCHEMATIC  
(SYMBOL T1027)

| REQ. PER UNIT | USED ON |           |         |
|---------------|---------|-----------|---------|
|               | MODEL   | ASSY. NO. | DATE    |
| 1             | CHG-3   | AX 554    | 2-16-65 |

TZ207 X

- PROCEDURE -

- 1- WIND APPROX. 14 TURNS IN THE DIRECTION SHOWN, EQUALLY SPACED OVER THE ANGLE SHOWN, WITHOUT OVERLAPPING TURNS.
- 2- TAP AT THE NUMBER OF TURNS AS SHOWN.
- 3- TURNS MAY BE ADDED OR REMOVED AS NEEDED TO MEET INDUCTANCE.
- 4- STAKE LEADS SECURELY WITH GL102.
- 5- BAKE FOR 1/2 HR. AT 215°F. TO REMOVE MOISTURE
- 6- COAT COIL & CORE WITH GL102 & BAKE 1/2 HR. AT 215°F.

ELECTRICAL SPECIFICATION

L = ±  
Q = ±  
C<sub>dist</sub> = ±

|   |   |             |                   |
|---|---|-------------|-------------------|
| X | 4 | BS 100      | SOLDER, TIN ALLOY |
| X | 3 | G102        | Q-MAX             |
| X | 2 | WI 141-22-9 | WIRE, ELEC. MAG.  |
| 1 | 1 | CI 127-1    | CORE, TOROID      |

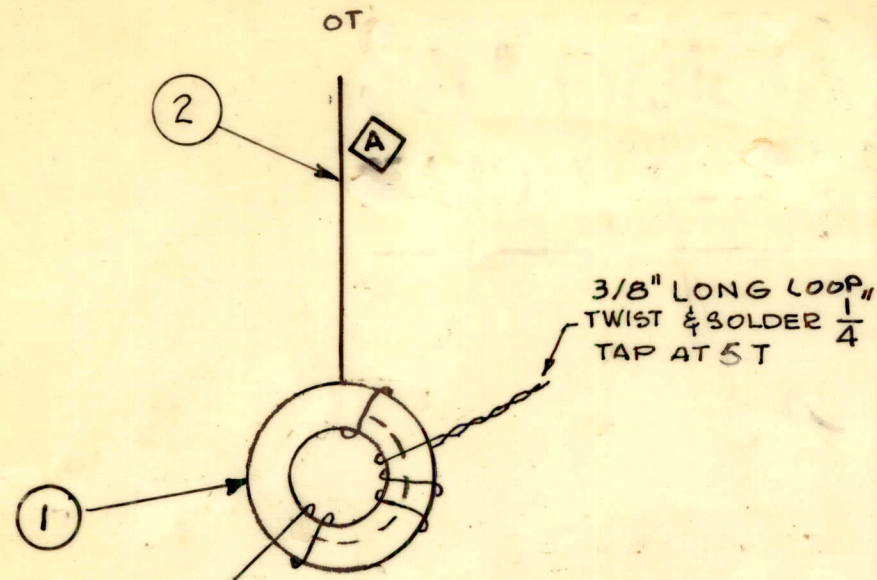
| REQ. ITEM          | PART NO. | J- ANGER DESCRIPTION                                 | SYMBOL |
|--------------------|----------|--|--------|
| STOCK SIZE         |          | THE TECHNICAL MATERIEL CORP.<br>MAMARONECK, NEW YORK |        |
| MATERIAL           |          | TRANSFORMER, RF<br>BAND # 7                          |        |
| TYPE & TEMPER      |          | G.D.L.   |        |
| HEAT TREAT. SPEC.  |          | DRAWN  |        |
| FINISH & SPEC. NO. |          | CHECKED  |        |
|                    |          | FINAL APPROVAL                                       |        |
|                    |          | ELEC. DES. APP. MECH. DES. APP.                      |        |

*Junger*

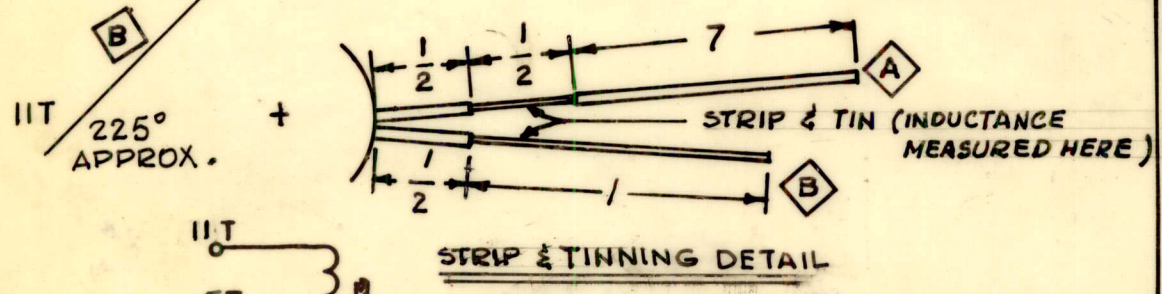
TZ207 X

| X   | EXPER. RELEASE | 2-16-65                                   | GDL     |        |         |           |                       |
|---|----------------|---|---------|--------|---------|-----------|-----------------------|
| SYM   | DESCRIPTION    | DATE                                      | CH. NO. | DRAFTS | CHECKER | ENG. APP. |                       |
| UNLESS OTHERWISE SPECIFIED<br>DIMENSIONS ARE IN INCHES AND INCLUDE<br>CHEMICALLY APPLIED OR PLATED FINISHES |                |   |         |        |         |           | SCALE<br>DO NOT SCALE |
| DECIMALS<br>X ± .05<br>XX ± .01<br>XXX ± .005   | TOLERANCES     | FRACTIONS<br>± 1/64<br>ANGLES<br>± 0° 30' | CODE    |        |         |           |                       |

|               |         |            |         |       |   |
|---------------|---------|------------|---------|-------|---|
| REQ. PER UNIT | USED ON |            |         | TZ208 | C |
|               | MODEL   | ASS'Y. NO. | DATE    |       |   |
| 2             | CHG-3   | AX 554     | 2-16-65 |       |   |



- PROCEDURE -
- 1- WIND 11 TURNS IN THE DIRECTION SHOWN, EQUALLY SPACED OVER THE ANGLE SHOWN, WITHOUT OVERLAPPING TURNS.
  - 2-TAP AT THE NUMBER OF TURNS AS SHOWN.
  - 3-TURNS MAY BE PUSHED TOGETHER OR SPREAD APART AS NEEDED TO MEET INDUCTANCE.
  - 4- STAKE LEADS SECURELY WITH GL102.
  - 5- BAKE FOR 1/2 HR. AT 215°F. TO REMOVE MOISTURE
  - 6-COAT COIL & CORE WITH GL102 & BAKE 1/2 HR. AT 215°F.



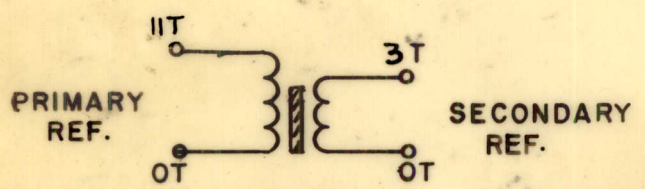
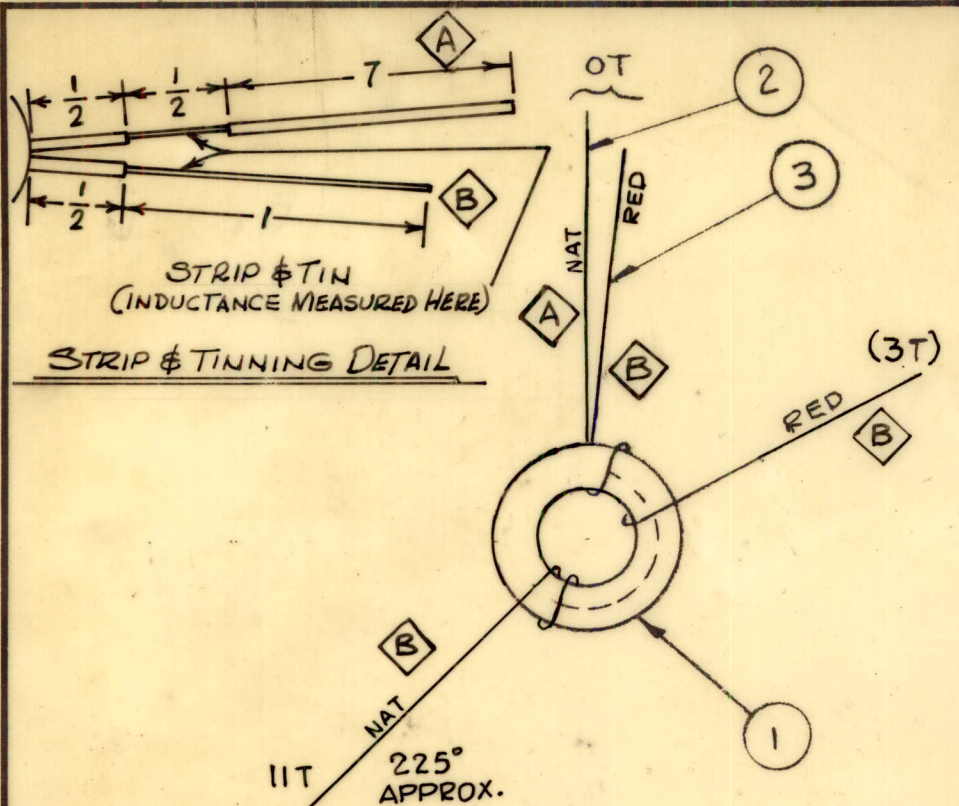
ELECTRICAL SPECIFICATION

$L = 0.625 \pm 0.013 \mu h$   
 $Q = 210 \pm 25$  AT 20MC.  
 $C_{dist} = 0.6 \pm 0.5$  MMF

|   |  |                              |         |        |         |           |
|---|--|------------------------------|---------|--------|---------|-----------|
| C   | SCHEMATIC SYM. T1018 ADDED                             | 10/4/65                      | 14913   | A.V.A. |         |           |
| B   | 5T WAS 4T, LOOP ADDED                                  | 5/16/65                      | 14553   |        |         |           |
| A   | DIMS. 1/2 & 1" DELETED<br>"A", "B" IND. & DETAIL ADDED | 6-24-65                      | 14338   | G.D.L. |         |           |
| Ø   | ORIGINAL RELEASE FOR PRODUCTION                        | 4-14-65                      | Ø       | ØL     |         |           |
| X   | COMPLETELY REVISED                                     | 3-15-65                      |         | G.D.L. |         |           |
| X   | EXPER. RELEASE   | 2-26-65                      |         | G.D.L. |         |           |
| SYM   | DESCRIPTION  | DATE                         | CH. NO. | DRAFTS | CHECKER | ENG. APP. |
| UNLESS OTHERWISE SPECIFIED<br>DIMENSIONS ARE IN INCHES AND INCLUDE<br>CHEMICALLY APPLIED OR PLATED FINISHES |  | SCALE<br><b>DO NOT SCALE</b> |         |        |         |           |
| DECIMALS  | FRACTIONS  | CODE                         |         |        |         |           |
| .X ± .05  | TOLERANCES ± 1/64                                      | Δ                            |         |        |         |           |
| .XX ± .01   | ANGLES ± 0° 30'  |                              |         |        |         |           |
| .XXX ± .005   |  |                              |         |        |         |           |

|                    |   |                   |  |                 |
|--------------------|---|-------------------|--|-----------------|
| X                  | 4 | BS100             | SOLDER, TIN ALLOY                                    |                 |
| X                  | 3 | GL102             | Q-MAX  |                 |
| X                  | 2 | WI141-22-9        | WIPE, ELEC. MAG.                                     |                 |
| 1                  | 1 | CI127-1           | CORE, TOROID   |                 |
| REQ. ITEM          |   | PART NO.          | J-ANGER DESCRIPTION                                  | SYMBOL          |
|                    |   |                   | THE TECHNICAL MATERIEL CORP.<br>MAMARONECK, NEW YORK |                 |
| STOCK SIZE         |   |                   | TRANSFORMER, RF                                      |                 |
| MATERIAL           |   |                   | DRIVER BAND*7  |                 |
|                    |   |                   | G.D.L.   |                 |
| TYPE & TEMPER      |   | HEAT TREAT. SPEC. | DRAWN  | CHECKED         |
|                    |   |                   |  | FINAL APPROVAL  |
| FINISH & SPEC. NO. |   |                   | ELEC. DES. APP.                                      | MECH. DES. APP. |
|                    |   |                   |  | TZ208 C         |





SCHEMATIC (SYMBOL T1023, T1021)

|               |         |            |         |         |
|---------------|---------|------------|---------|---------|
| REQ. PER UNIT | USED ON |            |         | TZ209 B |
|               | MODEL   | ASS'Y. NO. | DATE    |         |
| 2             | CHG-3   | AX 554     | 2-16-65 |         |

- PROCEDURE -
- 1-WIND PRIMARY IN THE DIRECTION SHOWN, EQUALLY SPACED OVER THE ANGLE SHOWN, WITHOUT OVERLAPPING TURNS.
  - 2-WIND SECONDARY BETWEEN TURNS OF PRIMARY. NUMBER OF TURNS AS SHOWN.
  - 3-PRIMARY TURNS MAY BE PUSHED TOGETHER OR SPREAD APART AS NEEDED TO MEET INDUCTANCE.
  - 4-STAKE LEADS SECURELY WITH GL102
  - 5-BAKE FOR 1/2 HR. AT 215°F. TO REMOVE MOISTURE.
  - 6-COAT COIL & CORE WITH GL102 & BAKE 1/2 HR. AT 215°F.

ELEC. SPECIFICATION  
 L = 0.625  $\mu$ h  $\pm$  0.013  $\mu$ h  
 PRI. Q = 210  $\pm$  25 AT 20MC  
 C<sub>dist</sub> = 0.6  $\pm$  0.5 MMF

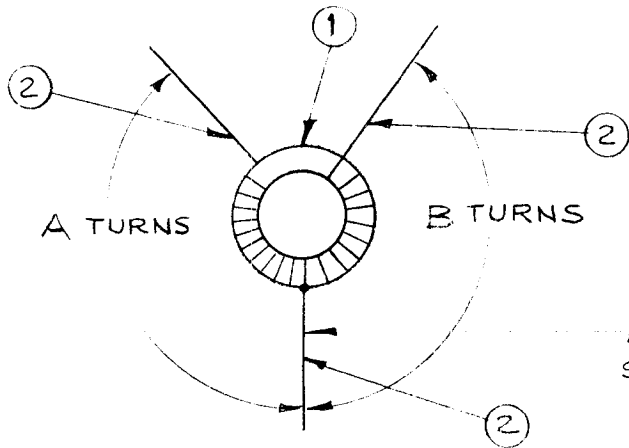
|   |   |   |           |        |         |           |
|---|---|---|-----------|--------|---------|-----------|
| B   | SYMBOL AND REF. ADDED.                                    | 8-27-65   | 14735     | X.V.V. |         |           |
| A   | DELE. 1/2" & 1" DIM.; ADDED "A" & "B" IDENT.; ADD. DETAIL | 6-24-65   | 14338     | H.L.A. |         |           |
| Ø   | ORIGINAL RELEASE FOR PRODUCTION                           | 4-14-65   | Ø         | J.L.   |         |           |
| X <sub>1</sub>  | COMPLETELY REVISED  | 3-15-65   |           | G.D.L. |         |           |
| X   | EXPER. RELEASE  | 2-16-65   |           | G.D.L. |         |           |
| SYM   | DESCRIPTION   | DATE  | CH. NO.   | DRAFTS | CHECKER | ENG. APP. |
| UNLESS OTHERWISE SPECIFIED DIMENSIONS ARE IN INCHES AND INCLUDE CHEMICALLY APPLIED OR PLATED FINISHES |   | SCALE DO NOT SCALE                                |           |        |         |           |
| DECIMALS<br>.X $\pm$ .05<br>.XX $\pm$ .01<br>.XXX $\pm$ .005  | TOLERANCES  | FRACTIONS<br>$\pm$ 1/64<br>ANGLES<br>$\pm$ 0° 30' | CODE<br>A |        |         |           |

|                    |   |                   |  |                |
|--------------------|---|-------------------|--|----------------|
| X                  | 4 | GL102             | Q-MAX  |                |
| X                  | 3 | W141-26-2         | WIRE, ELEC. MAG.                                     |                |
| X                  | 2 | W141-22-9         | WIRE, ELEC. MAG.                                     |                |
| 1                  | 1 | CI127-1           | CORE, TOROID   |                |
| REQ. ITEM          |   | PART NO.          | J. ANGER   | DESCRIPTION    |
| STOCK SIZE         |   |                   | THE TECHNICAL MATERIEL CORP.<br>MAMARONECK. NEW YORK |                |
| MATERIAL           |   |                   | TRANSFORMER, RF                                      |                |
|                    |   |                   | OUTPUT BAND#7  |                |
| TYPE & TEMPER      |   | HEAT TREAT. SPEC. | DRAWN  | CHECKED        |
| FINISH & SPEC. NO. |   | ELEC. DES. APP.   | MECH. DES. APP.                                      | FINAL APPROVAL |
|                    |   |                   |  | TZ209 B        |

|         |    |    |         |     |
|---------|----|----|---------|-----|
| TMC P/N | A  | B  | ITEM 1  | L   |
| TZ210   | 12 | 9  | CI128-1 | 30  |
| TZ210-2 | 34 | 11 | CI127-1 | 8.5 |

| REQ. PER UNIT | USED ON   |            |         |
|---------------|-----------|------------|---------|
|               | MODEL     | ASS'Y. NO. | DATE    |
| 1             | RFTA-1    |            | 4.29.65 |
| 1             | TLAA-2.5K |            |         |
| 1             | TLAD-2.5K |            |         |

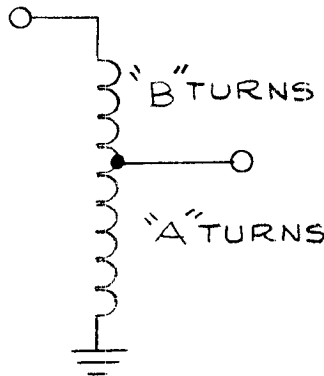
TZ210 B



ALL LEADS TO BE 1" LONG, STRIPPED & TINNED 1/2"

SPECIFICATIONS:  
L - SEE CHART *uh* MIN  
Q - 125 MIN

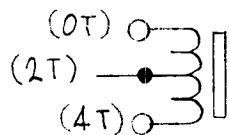
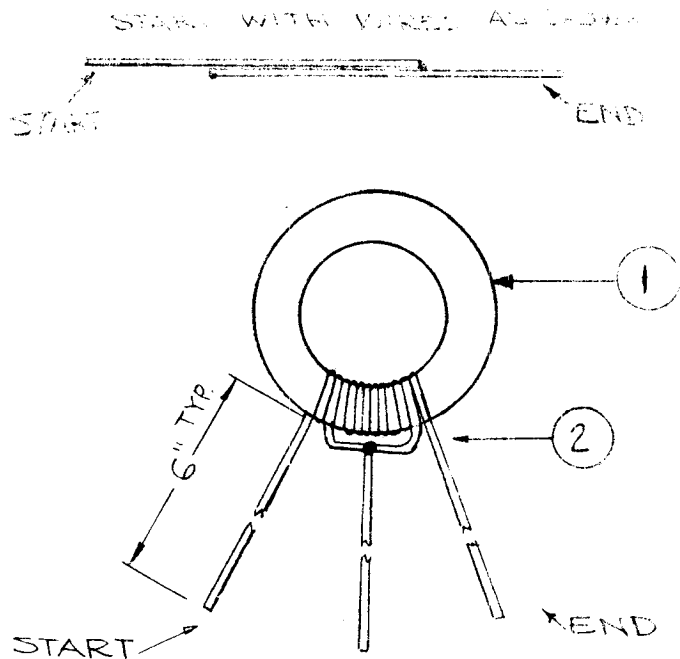
TEST FREQ - 2.5 MCG



|   |                          |   |         |              |         |           |  |          |                    |                |                                 |  |
|---|--------------------------|---|---------|--------------|---------|-----------|--|----------|--------------------|----------------|---------------------------------|--|
| B   | TZ 210 ("L" WAS 45)      | 121.69                                    | 19208   | 98           | JWL     | FB        | 1  | 1        | SEE CHART          | CORE, FERRAMIC |                                 |  |
| A   | REV. & UPDATED           | 7.9.68                                    | 18991   | H.G.         |         | FB        | REQ. ITEM  | PART NO. | F. BUDETTI         | DESCRIPTION    | SYMBOL                          |  |
| Ø   | ORIGINAL RELEASE FOR PRO | 11/3/66                                   | Q       | RME          |         |           | THE TECHNICAL MATERIEL CORP.<br>MAMARONECK, NEW YORK         |          |                    |                |                                 |  |
| XZ  | L WAS 53 <i>uh</i>       | 5/17/65                                   | XZ      |              |         |           | TRANSFORMER, RF  |          |                    |                |                                 |  |
| X1  | SPECS ADDED              | 5/12/65                                   | X1      |              |         |           |  |          |                    |                |                                 |  |
| SYM   | DESCRIPTION              | DATE                                      | CH. NO. | DRAFTS       | CHECKER | ENG. APP. | MATERIAL   |          |                    |                |                                 |  |
| UNLESS OTHERWISE SPECIFIED DIMENSIONS ARE IN INCHES AND INCLUDE CHEMICALLY APPLIED OR PLATED FINISHES |                          | SCALE                                     |         | DO NOT SCALE |         |           | TYPE & TEMPER HEAT TREAT. SPEC. DRAWN CHECKED FINAL APPROVAL |          |                    |                |                                 |  |
| DECIMALS<br>.X ± .05<br>.XX ± .01<br>.XXX ± .005  |                          | FRACTIONS<br>± 1/64<br>ANGLES<br>± 0° 30' |         | TOLERANCES   |         |           | CODE<br>A  |          | FINISH & SPEC. NO. |                | ELEC. DES. APP. MECH. DES. APP. |  |

TZ210 B

|               |          |            |         |        |   |
|---------------|----------|------------|---------|--------|---|
| REQ. PER UNIT | USED ON  |            |         | TZ 211 | Ø |
|               | MODEL    | ASS'Y. NO. | DATE    |        |   |
| 1             | TSTE-10K | AX130      | 3-28-65 |        |   |



SCHEMATIC (SYMBOL T 901)

PROCEDURE:

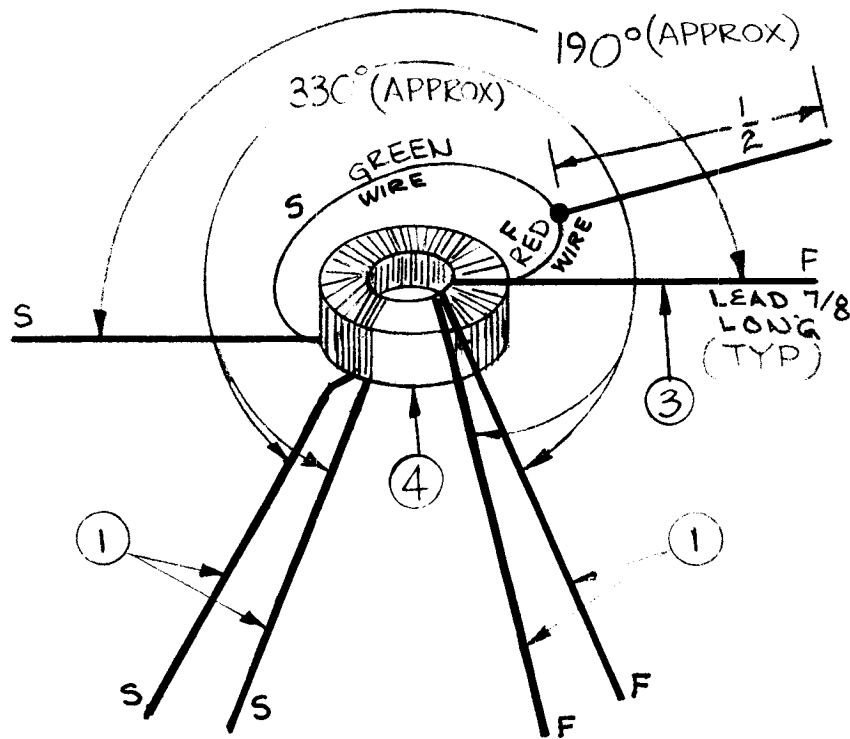
- 1- CLOSE WOUND 4 TURNS OF TWO LEADS (ITEM 2) EACH 17" LONG AROUND ITC. 1.
- 2- JOIN WIRES AS SHOWN & ADD 6" OF ITEM 2.
- 3- APPLY ITEM 3.

ELECTRICAL SPECIFICATIONS

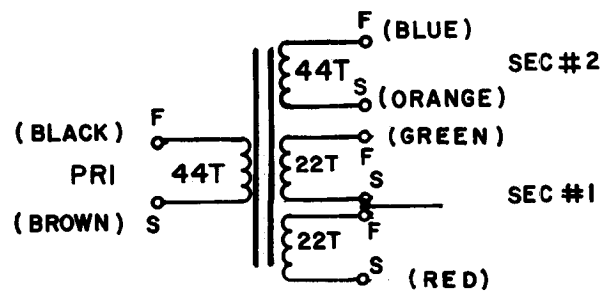
$L = 5.5 \pm .6 \mu h$  END TO END.  
 $1.4 \pm .5 \mu h$  CT TO END BALANCED.

| REQ. ITEM          | PART NO. | F. BUDETTI DESCRIPTION  | SYMBOL |
|--------------------|----------|-------------------------|--------|
| X 3                | TA 102-1 | INS. TAPE, ELECT. GLASS |        |
| Y 2                | WI122-25 | WIRE, ELEC, MAG. T      |        |
| 1 1                | CI128-4  | CORE, TOROID            |        |
| MATERIAL           |          |                         |        |
| STOCK SIZE         |          |                         |        |
| TYPE & TEMPER      |          |                         |        |
| HEAT TREAT. SPEC.  |          |                         |        |
| FINISH & SPEC. NO. |          |                         |        |
| DRAWN              |          | QC/B                    |        |
| CHECKED            |          |                         |        |
| ELEC. DES. APP.    |          |                         |        |
| MECH. DES. APP.    |          |                         |        |
|                    |          | TZ 211                  | Ø      |

| SYM   | DESCRIPTION         | DATE       | CH. NO.        | DRAFTS                                    | CHECKER | ENG. APP. |
|---|---------------------|------------|----------------|---|---------|-----------|
| Ø   | ORIGINAL RELEASE    | 4-12-65    | Ø              | GDL                                       |         | JH        |
| X <sub>2</sub>  | CI128-4 WAS CI128-2 | 10-18-65   | X <sub>2</sub> |   |         | AM        |
| X <sub>1</sub>  | COMPLETELY REVISED  | 7-27-65    | X <sub>1</sub> |   |         |           |
| UNLESS OTHERWISE SPECIFIED DIMENSIONS ARE IN INCHES AND INCLUDE CHEMICALLY APPLIED OR PLATED FINISHES |                     | SCALE 1:1  |                |   |         |           |
| DECIMALS<br>.X ± .05<br>.XX ± .01<br>.XXX ± .005  |                     | TOLERANCES |                | FRACTIONS<br>± 1/64<br>ANGLES<br>± 0° 30' |         | CODE<br>A |



— SCHEMATIC —



|               |         |           |         |       |   |
|---------------|---------|-----------|---------|-------|---|
| REQ. PER UNIT | USED ON |           |         | TZ213 | A |
|               | MODEL   | ASSY. NO. | DATE    |       |   |
| 1             | HFSA-1  |           | 5-13-66 |       |   |

WINDING PROCEDURE

1. WIND PRIMARY IN THE DIRECTION SHOWN EQUALLY SPACED OVER THE ANGLE SHOWN WITHOUT OVERLAPPING TURNS. WIND SECONDARY #2 OVER PRIMARY AS SHOWN, NUMBER OF TURNS AS SHOWN. WIND SECONDARY #1 (BIFILAR WIRE) OVER PRIMARY AS SHOWN, NUMBER OF TURNS AS SHOWN.
2. PRIMARY MAY BE PUSHED TOGETHER OR SPREAD APART, AS NEEDED TO MEET INDUCTANCE.
3. STAKE LEADS SECURELY WITH GL102.
4. COLOR CODE LEADS AS SHOWN IN SCHEMATIC.
5. BAKE FOR 1/2 HR AT 215°F TO REMOVE MOISTURE.
6. COAT COIL & CORE WITH GL102 & BAKE 1/2 HR AT 215°F.

PRIMARY ELECTRICAL SPEC:

Q=50                      L=14.25μh ±0.5%                      C=

|   |             |                                |
|---|-------------|--------------------------------|
| 9 | GL102       | Q-MAX                          |
| 8 | DELETED     |                                |
| 7 |             |                                |
| 6 |             |                                |
| 5 | DELETED     |                                |
| 4 | CII27-3     | CORE, TOROID                   |
| 3 | WI148-34-25 | CABLE SPEC PURPOSE MAG 2 COND. |
| 2 | DELETED     |                                |
| 1 | WI141-34-9  | WIRE, ELEC, MAGNET, INSUL      |

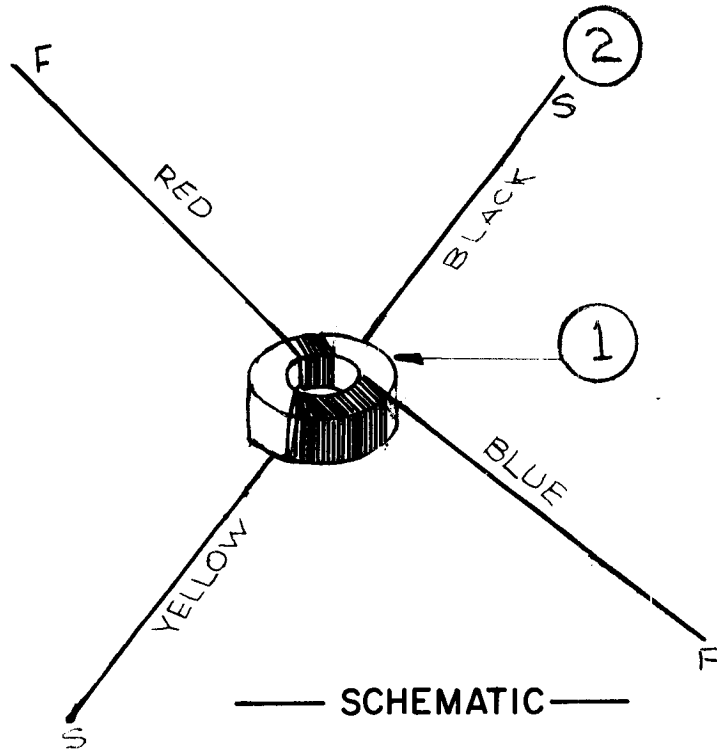
|   |  |   |         |            |         |           |
|---|--|---|---------|------------|---------|-----------|
| A   | ITEMS 5,6,7 & 8 DELETED SCHEMATIC & NOTE 4 REVISED | 4-10-67                                   | 18072   | G.D.L.     | Jde     | Jde       |
| Ø   | ORIGINAL RELEASE FOR PRODUCTION                    | 6/21/66                                   | 1       |            |         | Jde       |
| X2  | BUILD REV, LEADS ADDED                             | 6/20/66                                   | X2      |            |         |           |
| X1  | ITEM 2 WAS WI 141-34-9                             | 5/7/66                                    | X1      |            |         |           |
| SYM   | DESCRIPTION  | DATE                                      | CH. NO. | DRAFTS     | CHECKER | ENG. APP. |
| UNLESS OTHERWISE SPECIFIED DIMENSIONS ARE IN INCHES AND INCLUDE CHEMICALLY APPLIED OR PLATED FINISHES |  | SCALE                                     |         |            |         |           |
| DECIMALS<br>.X ± .05<br>.XX ± .01<br>.XXX ± .005  |  | FRACTIONS<br>± 1/64<br>ANGLES<br>± 0° 30' |         | TOLERANCES |         |           |

|           |          |  |        |
|-----------|----------|--|--------|
| REQ. ITEM | PART NO. | DESCRIPTION  | SYMBOL |
|           |          | THE TECHNICAL MATERIEL CORP.<br>MAMARONECK, NEW YORK |        |
|           |          | STOCK SIZE   |        |
|           |          | MATERIAL   |        |
|           |          | TYPE & TEMPER  |        |
|           |          | HEAT TREAT. SPEC.                                    |        |
|           |          | FINISH & SPEC. NO.                                   |        |
|           |          | DRAWN  |        |
|           |          | CHECKED  |        |
|           |          | FINAL APPROVAL                                       |        |
|           |          | ELEC. DES. APP.                                      |        |
|           |          | MECH. DES. APP.                                      |        |

TZ213 A

**ELECTRICAL NOTE:**

INDUCTANCE AND Q NOT CRITICAL ON THIS TRANSFORMER SINCE IT IS WOUND ON LOW FREQ. MATERIAL TO PRODUCE A BROADBAND EFFECT.



— SCHEMATIC —  
 (BLUE) FINISH      FINISH (RED)  
 PRI      SEC  
 (YEL) START      START (BLACK)

| REQ. PER UNIT | USED ON |            |         |
|---------------|---------|------------|---------|
|               | MODEL   | ASS'Y. NO. | DATE    |
|               | HFSA-1  | —          | 5-12-66 |
|               | MMX-1   |            | 2.27.67 |

TZ214 B

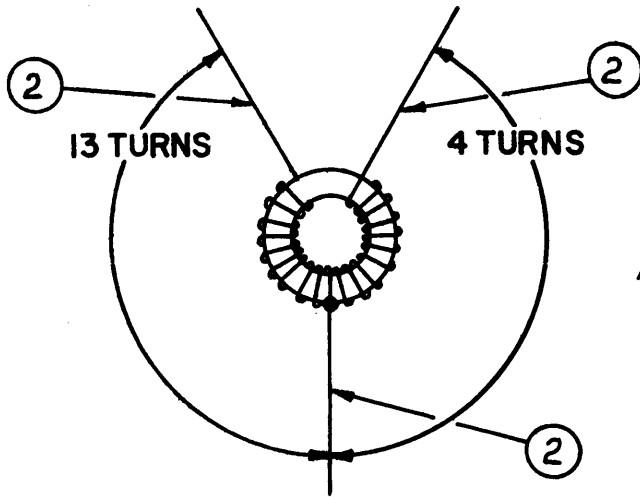
**WINDING PROCEDURE**

1. WIND PRIMARY IN THE DIRECTION AS SHOWN, EQUALLY SPACED AS INDICATED, WITHOUT OVERLAPPING TURNS.
2. WIND SECONDARY IN SAME MANNER AS PRIMARY, WITHOUT OVERLAPPING TURNS.
3. STAKE LEADS SECURELY WITH GL102.
4. SLIP SLEEVING OVER WIRE TO REQUIRED LENGTH AS SHOWN.
5. BAKE FOR 1/2 HOUR AT 250°F TO REMOVE MOISTURE.
6. COAT COIL & CORE WITH GL102 AND BAKE FOR 1/2 HOUR AT 215°F.
7. SEE ELECTRICAL NOTE.

| TMC P/N | PRIMARY  | CORE    | SECONDARY |
|---------|----------|---------|-----------|
| TZ214   | 25 TURNS | CI127-7 | 12 TURNS  |
| TZ214-2 | 6 TURNS  | CI127-2 | 6 TURNS   |

| REQ.  | ITEM | PART NO.                                  | DESCRIPTION             | SYMBOL  |
|---|------|---|-------------------------|---------|
| X   | 3    | GL102                                     | Q-MAX                   |         |
|   | 2    | WI123-26                                  | WIRE, ELECTRICAL MAGNET |         |
| 1   | 1    | SEE CHART                                 | CORE, TOROID            |         |
| <b>THE TECHNICAL MATERIEL CORP.<br/>MAMARONECK, NEW YORK</b>  |      |   |                         |         |
| <b>TRANSFORMER, TOROIDAL</b>  |      |   |                         |         |
| UNLESS OTHERWISE SPECIFIED<br>DIMENSIONS ARE IN INCHES AND INCLUDE<br>CHEMICALLY APPLIED OR PLATED FINISHES |      |   |                         |         |
| DECIMALS<br>.X ± .05<br>.XX ± .01<br>.XXX ± .005  |      | FRACTIONS<br>± 1/64<br>ANGLES<br>± 0° 30' |                         |         |
| TOLERANCES  |      | CODE                                      |                         |         |
| FINISH & SPEC. NO.  |      | ELEC. DES. APP.                           | MECH. DES. APP.         | TZ214 B |

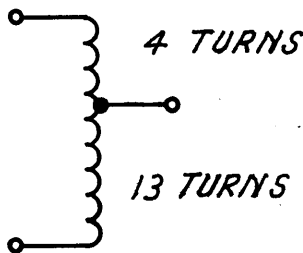
| APPLICATION |               |           | REVISIONS |                      |         |          |       |           |      |  |
|-------------|---------------|-----------|-----------|----------------------|---------|----------|-------|-----------|------|--|
| QTY         | MODEL USED ON | ASS'Y NO. | LTR       | DESCRIPTION          | DATE    | E.M.N.NO | DRAFT | CHKD      | APPD |  |
| 1           | MMX-1         |           | X         | EXPERIMENTAL RELEASE | 3-16-67 |          |       | L.A.K. HD | FA   |  |
|             |               |           | Ø         | ORIGINAL RELEASE     | 8/8/69  |          |       | W         |      |  |



SPECIFICATIONS:  
ALL TURNS TO BE CLOSE WOUND.

NOTE: ALL LEADS TO BE 3/8 LONG,  
STRIPPED & TINNED 1/4.

SINCE THIS IS A BROADBAND LOW Q  
DEVICE, INDUCTANCE & Q ARE  
NOT SPECIFIED.



| REQ'D | ITEM | PART NUMBER | DESCRIPTION     | SYM. |
|-------|------|-------------|-----------------|------|
| X     | 3    | GL130       | Q-DOPE          |      |
| X     | 2    | W1102-9     | WIRE, ELEC, MAG |      |
| 1     | 1    | CI127-8     | CORE FERRAMIC   |      |

UNLESS OTHERWISE SPECIFIED  
DIMENSIONS ARE IN INCHES  
AND INCLUDE CHEMICALLY APPLIED  
OR PLATED FINISHES

|                    |  |      |
|--------------------|--|------|
| MECH. DES.         |  | DATE |
| ELECT. DES.        |  | DATE |
| CHECKED            |  | DATE |
| DRAWN L. KOLIBABEK |  | DATE |

LIST OF MATERIAL

THE TECHNICAL MATERIEL CORP.  
MAMARONECK, NEW YORK

TRANSFORMER, RF

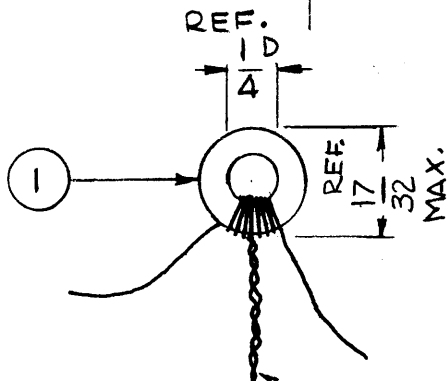
DECIMALS FRACTIONS  
.X ± .05 TOLS. 1/64  
.XX ± .01 ANGLES  
.XXX ± .005 0°-30'

|          |  |
|----------|--|
| MATERIAL |  |
| FINISH   |  |
| S401-451 |  |

NOTICE TO PERSONS RECEIVING THIS DRAWING  
THE TECHNICAL MATERIEL CORPORATION claims proprietary right in the material disclosed hereon. This drawing is issued in confidence for engineering information only and may not be reproduced or used to manufacture anything shown hereon without permission from THE TECHNICAL MATERIEL CORPORATION to the user. This drawing is loaned for mutual assistance and is subject to recall at any time.

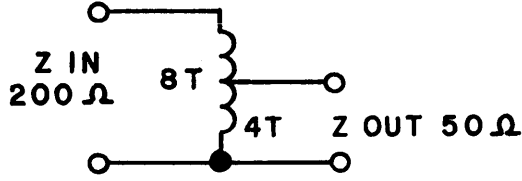
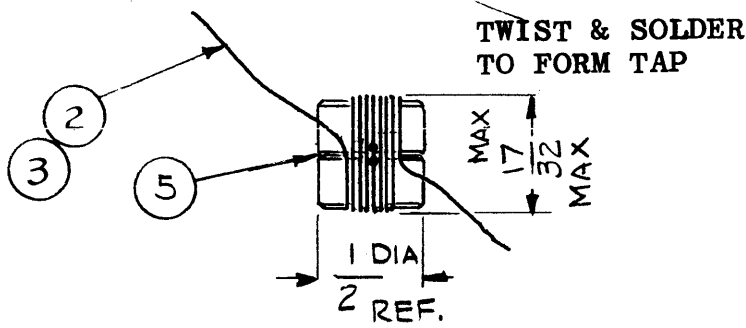
|           |                          |                  |            |
|-----------|--------------------------|------------------|------------|
| SIZE<br>A | CODE IDENT. NO.<br>82679 | DWG NO.<br>TZ217 | ISSUE<br>Ø |
| SCALE     |                          | SHEET OF         |            |

| APPLICATION |               |           | REVISIONS    |                        |         |              |       |      |      |  |
|-------------|---------------|-----------|--------------|------------------------|---------|--------------|-------|------|------|--|
| QTY         | MODEL USED ON | ASS'Y NO. | LTR          | DESCRIPTION            | DATE    | E.M.N.NO     | DRAFT | CHKD | APPD |  |
| 2           | MMX-1         | A4502     | X            | EXP. RELEASE           | 5-2-67  |              | G.D.L |      |      |  |
| 2           | VOX-7         | A4502     | X1           | DIMS. REF. ADDED       | 5-25-67 |              | G.D.L |      |      |  |
|             |               |           | <del>8</del> | ORIG RELEASE FOR PROD. | 6-14-67 | <del>8</del> | RG    |      |      |  |
|             |               |           | A            | ITI WAS CI 115         | 5/15/70 | 19854        | K1    |      |      |  |



**WINDING PROCEDURE**

1. FORM A SINGLE CORE FROM 2 OF ITEM 1. USE ITEM 5 TO FASTEN TOGETHER AS SHOWN.
2. WIND 8 TURNS TAP AT 4 TURNS CLOSE WOUND OVER 2 CORES AS SHOWN.
3. STAKE LEADS WITH ITEM 4.
4. BAKE 1/2 HR AT 215°F TO REMOVE MOISTURE.
5. COAT COIL WITH ITEM 4 AND BAKE 1/2 HR AT 215°F
6. STRIP & TIN LEADS, ALL LEADS TO WITHIN 1/4" OF COIL
7. ALL LEADS TO BE 1-1/2 LONG



**ELECTRICAL SPECS (FOR REF ONLY)**

Z IN 200 Ω  
Z OUT 50 Ω

| REQ'D | ITEM | PART NUMBER | DESCRIPTION             | SYM. |
|-------|------|-------------|-------------------------|------|
| X     | 5    | GL103       | ADHESIVE-N-CEL          |      |
| X     | 4    | GL104-2     | INSULATION, VARNISH U85 |      |
| X     | 3    | BS100       | SOLDER, TIN ALLOY       |      |
| X     | 2    | WI102-9-2   | WIRE, ELEC. MAG, EC     |      |
| 2     | 1    | CI127-7     | CORE, TOROID            |      |

| O. POSE        |  |      |  | LIST OF MATERIAL   |  |  |  |
|----------------|--|------|--|--|--|--|--|
| FINAL APPROVAL |  | DATE |  | <b>THE TECHNICAL MATERIEL CORP.</b><br>MAMARONECK, NEW YORK<br><br><b>TRANSFORMER</b><br><b>BROAD BAND</b> |  |  |  |
| MECH. DES.     |  | DATE |  |  |  |  |  |
| ELECT. DES.    |  | DATE |  |  |  |  |  |
| CHECKED        |  | DATE |  |  |  |  |  |
| DRAWN          |  | DATE |  |  |  |  |  |

|   |           |
|---|-----------|
| UNLESS OTHERWISE SPECIFIED DIMENSIONS ARE IN INCHES AND INCLUDE CHEMICALLY APPLIED OR PLATED FINISHES |           |
| DECIMALS  | FRACTIONS |
| .X ± .05  | 1/64      |
| .XX ± .01   | ANGLES    |
| .XXX ± .005   | 0° - 30'  |
| MATERIAL  |           |
| FINISH  |           |
| 3401-451  |           |

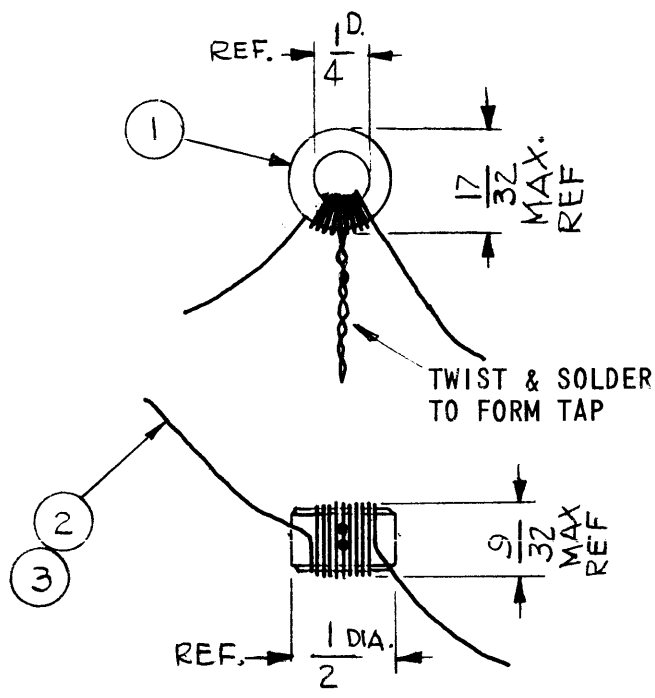
**NOTICE TO PERSONS RECEIVING THIS DRAWING**  
**THE TECHNICAL MATERIEL CORPORATION** claims proprietary right in the material disclosed hereon. This drawing is issued in confidence for engineering information only and may not be reproduced or used to manufacture anything shown hereon without permission from **THE TECHNICAL MATERIEL CORPORATION** to the user. This drawing is loaned for mutual assistance and is subject to recall at any time.

|       |                 |                   |          |
|-------|-----------------|-------------------|----------|
| SIZE  | CODE IDENT. NO. | DWG NO.           | ISSUE    |
| A     | 82679           | TZ 219            | A        |
| SCALE | 1:1             | M/L Allen 6/15/67 | SHEET OF |

APPLICATION

REVISIONS

| QTY | MODEL USED ON | ASS'Y NO. | LTR | DESCRIPTION                  | DATE    | E.M.N.NO | DRAFT  | CHKD | APPD |
|-----|---------------|-----------|-----|------------------------------|---------|----------|--------|------|------|
| 1   | MMX-1         | A4502     | X   | EXP. RELEASE                 | 5-3-67  |          | G.D.L. |      | Jr   |
| 1   | VOX-7         | A4502     | X   | ELCT. SPEC & SCHEMATIC ADDED | 5-3-67  |          | G.D.L. |      | Jr   |
|     |               |           |     | ORIG. RELEASE FOR PROD       | 6-15-67 |          | RG     |      | Jr   |
|     |               |           |     | IT WAS CI 115                | 5/15/70 | 19854    | K.L.   |      | Jr   |

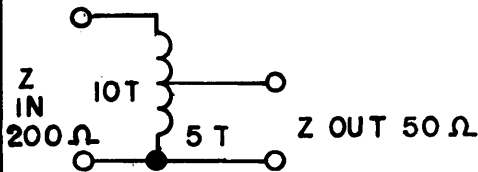


WINDING PROCEDURE

1. WIND 10 TURNS TAP AT 5 TURNS CLOSE WOUND OVER CORE AS SHOWN.
2. STAKE LEADS WITH ITEM 4.
3. BAKE 1/2 HR AT 215°F TO REMOVE MOISTURE.
4. COAT COIL WITH ITEM 4 & BAKE 1/2 HR AT 215°F.
5. STRIP & TIN LEADS ALL LEADS TO WITHIN 1/4" OF COIL.
6. ALL LEADS TO BE 1-1/2 LONG.

ELECTRICAL SPECS (FOR REF ONLY)

Z IN 200 Ω  
Z OUT 50 Ω



| REQ'D | ITEM | PART NUMBER | DESCRIPTION             | SYM. |
|-------|------|-------------|-------------------------|------|
| X     | 4    | GL104-2     | INSULATION, VARNISH U85 |      |
| X     | 3    | BS100       | SOLDER, TIN ALLOY       |      |
| X     | 2    | WI102-9-2   | WIRE, ELEC MAG, EC      |      |
| I     | 1    | CI127-7     | CORE, TOROID            |      |

O-POSE

LIST OF MATERIAL

THE TECHNICAL MATERIEL CORP.  
MAMARONECK, NEW YORK

TRANSFORMER  
BROAD BAND

|   |
|---|
| UNLESS OTHERWISE SPECIFIED DIMENSIONS ARE IN INCHES AND INCLUDE CHEMICALLY APPLIED OR PLATED FINISHES |
| DECIMALS: .X ± .05, .XX ± .01, .XXX ± .005  |
| FRACTIONS: 1/64, ANGLES: 0°-30'   |
| MATERIAL: S401-451  |
| FINISH:   |

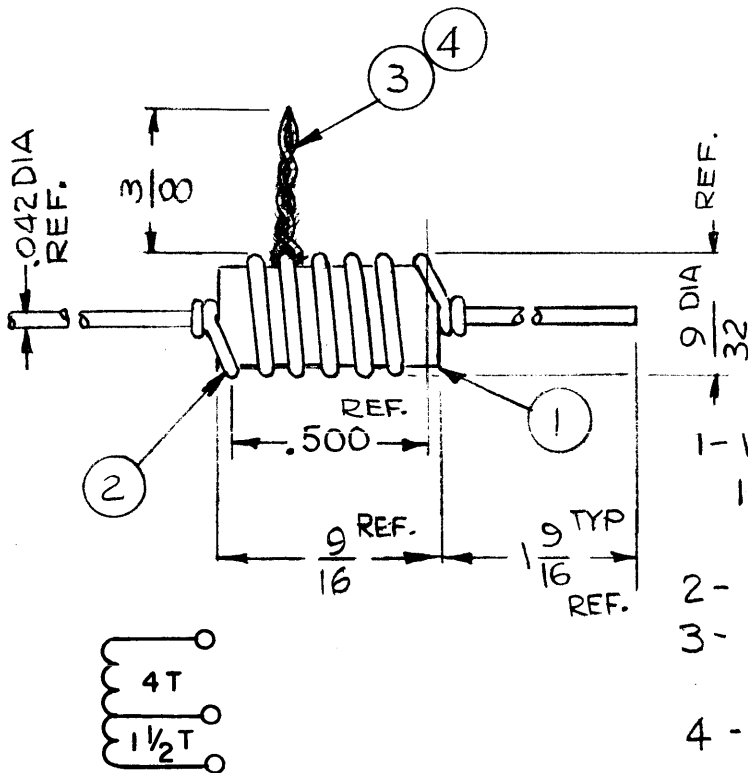
|                             |               |
|-----------------------------|---------------|
| FINAL APPROVAL: [Signature] | DATE: 6/15/67 |
| MECH. DES.:                 | DATE:         |
| ELECT. DES. [Signature]     | DATE: 6/15/67 |
| CHECKED: [Signature]        | DATE: 6-15-67 |
| DRAWN: G.D.L.               | DATE: 5-2-67  |

NOTICE TO PERSONS RECEIVING THIS DRAWING  
THE TECHNICAL MATERIEL CORPORATION claims proprietary right in the material disclosed hereon. This drawing is issued in confidence for engineering information only and may not be reproduced or used to manufacture anything shown hereon without permission from THE TECHNICAL MATERIEL CORPORATION to the user. This drawing is loaned for mutual assistance and is subject to recall at any time.

|            |                        |                 |          |
|------------|------------------------|-----------------|----------|
| SIZE: A    | CODE IDENT. NO.: 82679 | DWG NO.: TZ 220 | ISSUE: A |
| SCALE: 1:1 | M/L A Klem 6/15/67     | SHEET           | OF       |



| APPLICATION |               |           | REVISIONS |   |          |          |       |                    |                    |  |
|-------------|---------------|-----------|-----------|---|----------|----------|-------|--------------------|--------------------|--|
| QTY         | MODEL USED ON | ASS'Y NO. | LTR       | DESCRIPTION   | DATE     | E.M.N.NO | DRAFT | CHKD               | APPD               |  |
| 1           | MMX-( )       | A4480     |           | DWG IDENTICAL TO CANCELLED DWG NO. TR188 (WRONG PREFIX) |          |          |       |                    |                    |  |
| 1           | VOX-7         | A4574     | Ø         | ORIG RELEASE FOR PRODUCTION                             | 8/21/67  | Ø        | C.V.  | <i>[Signature]</i> | <i>[Signature]</i> |  |
|             |               |           | A         | ITEM 1 WAS CF140  | 10.24.67 | 18568    | HEY.  | <i>[Signature]</i> | <i>[Signature]</i> |  |



~ ELECTRICAL SPECS ~  
 $L = 0.1 \mu h \pm .01 \mu h$   
 $Q = 75 \text{ MIN AT } 25 \text{ Mc.}$

- ~ WINDING PROCEDURE ~
- 1- WIND  $5\frac{1}{2}$  TURNS AT A RATE OF 11 T.P.I. TAP AT  $1\frac{1}{2}$  TURNS AND SOLDER AS SHOWN.
  - 2- STRIP & SOLDER TO END LEADS
  - 3- BAKE  $1/2$  HR AT  $215^\circ \text{F}$  TO REMOVE MOISTURE
  - 4 - COAT COIL WITH ITEM 5 & BAKE  $1/2$  HR AT  $215^\circ \text{F}$ .

| REQ'D | ITEM | PART NUMBER | DESCRIPTION             | SYM. |
|-------|------|-------------|-------------------------|------|
| X     | 5    | GL104-2     | INSULATING, VARNISH USE |      |
| X     | 4    | BS100       | SOLDER, TIN ALLOY       |      |
| X     | 3    | WL100-8     | WIRE, BUSS BAR          |      |
| X     | 2    | WI141-22-9  | WIRE, ELEC. MAG         |      |
| 1     | 1    | RC32GF226J  | RESISTOR, FXD COMP      |      |

UNLESS OTHERWISE SPECIFIED DIMENSIONS ARE IN INCHES AND INCLUDE CHEMICALLY APPLIED OR PLATED FINISHES

O. POSE

LIST OF MATERIAL

|  |                                       |
|--|---------------------------------------|
| DECIMALS<br>.X ± .05<br>.XX ± .01<br>.XXX ± .005 | FRACTIONS<br>1/64<br>ANGLES<br>0°-30' |
| MATERIAL   |                                       |
| FINISH   |                                       |
| S401-451   |                                       |

|                                      |                 |
|--------------------------------------|-----------------|
| FINAL APPROVAL<br><i>[Signature]</i> | DATE<br>8/21/67 |
| MECH. DES.                           | DATE            |
| ELECT. DES.<br><i>[Signature]</i>    | DATE<br>7/11/67 |
| CHECKED<br><i>[Signature]</i>        | DATE            |
| DRAWN<br>G.D.L.                      | DATE<br>5-3-67  |

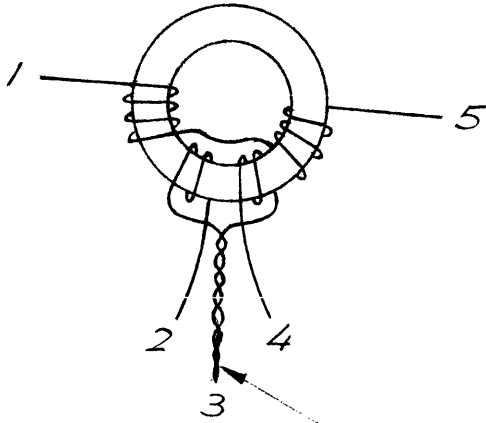
THE TECHNICAL MATERIEL CORP.  
MAMARONECK, NEW YORK

TRANSFORMER, FIXED  
40 Mc

NOTICE TO PERSONS RECEIVING THIS DRAWING  
 THE TECHNICAL MATERIEL CORPORATION claims proprietary right in the material disclosed hereon. This drawing is issued in confidence for engineering information only and may not be reproduced or used to manufacture anything shown hereon without permission from THE TECHNICAL MATERIEL CORPORATION to the user. This drawing is loaned for mutual assistance and is subject to recall at any time.

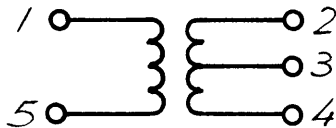
|           |                          |                   |            |
|-----------|--------------------------|-------------------|------------|
| SIZE<br>A | CODE IDENT. NO.<br>82679 | DWG NO.<br>TZ 222 | ISSUE<br>A |
| SCALE 2:1 |                          | SHEET OF          |            |

| APPLICATION |               |           | REVISIONS |                       |        |          |       |      |      |  |
|-------------|---------------|-----------|-----------|-----------------------|--------|----------|-------|------|------|--|
| QTY         | MODEL USED ON | ASS'Y NO. | LTR       | DESCRIPTION           | DATE   | E.M.N.NO | DRAFT | CHKD | APPD |  |
|             | MTR( )150     |           | X         | EXP. RELEASE          | 4/3/69 | X        | K.H.  | J.D. |      |  |
|             |               |           | Ø         | ORIG RELEASE FOR PROD | 7/1/69 |          | CV    |      | J.D. |  |



**FABRICATION**

1. WIND SECONDARY (4 TURNS) TO TOROIDAL CORE, STAKE WITH GL102
2. WIND PRIMARY (8 TURNS) AS SHOWN COAT WITH
3. BAKE AT 50°C FOR 20 MINUTES.
4. LEADS TO BE 1" LONG AND TIN LEADS CLOSE TO CORE.



|   |   |          |                     |  |
|---|---|----------|---------------------|--|
| X | 4 | BS 100   | SOLDER, TIN ALLOY   |  |
| X | 3 | GL 102   | LACQUER             |  |
| X | 2 | WI 102-9 | WIRE, ELEC. MAG, EC |  |
| 1 | 1 | CI 115   | CORE TOROIDAL       |  |

UNLESS OTHERWISE SPECIFIED DIMENSIONS ARE IN INCHES AND INCLUDE CHEMICALLY APPLIED OR PLATED FINISHES

| REQ'D | ITEM | PART NUMBER | DESCRIPTION | SYM. |
|-------|------|-------------|-------------|------|
|-------|------|-------------|-------------|------|

POSE

LIST OF MATERIAL

| DECIMALS    | FRACTIONS |
|-------------|-----------|
| .X ± .05    | 1/64      |
| .XX ± .01   | ANGLES    |
| .XXX ± .005 | 0° - 30'  |

|                |        |      |         |
|----------------|--------|------|---------|
| FINAL APPROVAL | S.P.M. | DATE | 5/11/69 |
| MECH. DES.     |        | DATE |         |
| ELECT. DES.    | J.D.   | DATE | 7/1/69  |
| CHECKED        | J.D.   | DATE | 4/3/69  |
| DRAWN          | K.H.   | DATE | 4/2/69  |

THE TECHNICAL MATERIEL CORP.  
MAMARONECK, NEW YORK

|          |  |
|----------|--|
| MATERIAL |  |
| FINISH   |  |
| S401-451 |  |

TRANSFORMER, T/F

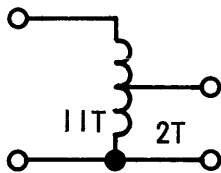
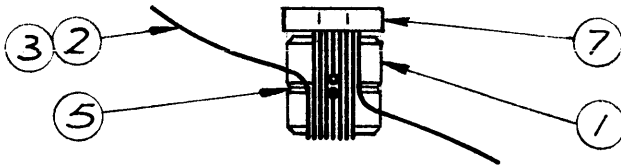
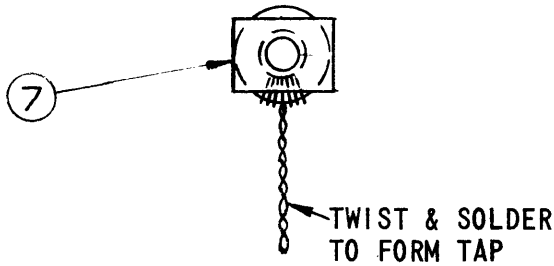
**NOTICE TO PERSONS RECEIVING THIS DRAWING**  
THE TECHNICAL MATERIEL CORPORATION claims proprietary right in the material disclosed hereon. This drawing is issued in confidence for engineering information only and may not be reproduced or used to manufacture anything shown hereon without permission from THE TECHNICAL MATERIEL CORPORATION to the user. This drawing is loaned for mutual assistance and is subject to recall at any time.

|       |                 |         |       |
|-------|-----------------|---------|-------|
| SIZE  | CODE IDENT. NO. | DWG NO. | ISSUE |
| A     | 82679           | TZ 224  | Ø     |
| SCALE |                 | SHEET   | OF    |

| APPLICATION |               |           | REVISIONS |                       |        |          |       |      |      |  |
|-------------|---------------|-----------|-----------|-----------------------|--------|----------|-------|------|------|--|
| QTY         | MODEL USED ON | ASS'Y NO. | LTR       | DESCRIPTION           | DATE   | E.M.N.NO | DRAFT | CHKD | APPD |  |
| 1           | MTR( )-150    |           | X         | EXP. RELEASE          | 4/1/69 |          | K.H.  | J.S. | J.S. |  |
|             |               |           | Ø         | ORIG RELEASE FOR PROD | 7/2/69 | Ø        | CV    |      | J.S. |  |

### WINDING PROCEDURE

1. FORM A SINGLE CORE FROM 2 OF ITEM 1. USE ITEM 5 TO FASTEN TOGETHER AS SHOWN.
2. WIND 11 TURNS TAP AT 2 TURNS CLOSE WOUND OVER 2 CORES AS SHOWN.
3. STAKE LEADS WITH ITEM 4.
4. FASTEN ITEM 7 TO COIL WITH ITEM 6 AS SHOWN.
5. BAKE 1/2 HR. AT 215°F TO REMOVE MOISTURE
6. COAT COIL WITH ITEM 4 AND BAKE 1/2 HR. AT 215°F.
7. STRIP & TIN LEADS, ALL LEADS TO WITHIN 1/4" OF COIL.
8. ALL LEADS TO BE 1-1/2" LONG



| REQ'D | ITEM | PART NUMBER | DESCRIPTION             | SYM. |
|-------|------|-------------|-------------------------|------|
| X     | 7    | PX1062      | SUPPORT, MTG, XFMR      |      |
| X     | 6    | GL129       | EASTMAN 910             |      |
| X     | 5    | GL103       | ADHESIVE-N-CEL          |      |
| X     | 4    | GL104-2     | INSULATION, VARNISH U85 |      |
| X     | 3    | BS100       | SOLDER, TIN ALLOY       |      |
| X     | 2    | WI123-22-9  | WIRE, ELEC MAG, EC      |      |
| 2     | 1    | CI128-4     | CORE, TOROID            |      |

UNLESS OTHERWISE SPECIFIED DIMENSIONS ARE IN INCHES AND INCLUDE CHEMICALLY APPLIED OR PLATED FINISHES

### LIST OF MATERIAL

|  |                                       |       |
|--|---------------------------------------|-------|
| DECIMALS<br>.X ± .05<br>.XX ± .01<br>.XXX ± .005 | FRACTIONS<br>1/64<br>ANGLES<br>0°-30' | TOLS. |
| MATERIAL   |                                       |       |
| FINISH   |                                       |       |
| S 401 - 451                                      |                                       |       |

|                 |      |
|-----------------|------|
| DESIGN APPROVAL | DATE |
| MECH. DES.      | DATE |
| ELECT. DES.     | DATE |
| CHECKED         | DATE |
| DRAWN           | DATE |

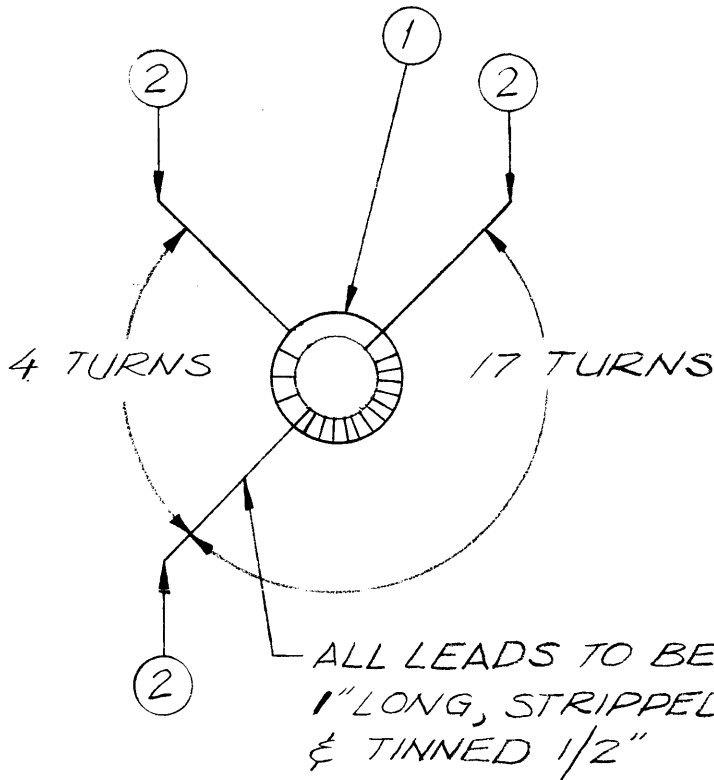
THE TECHNICAL MATERIEL CORP.  
MAMARONECK, NEW YORK

TRANSFORMER  
BROAD BAND

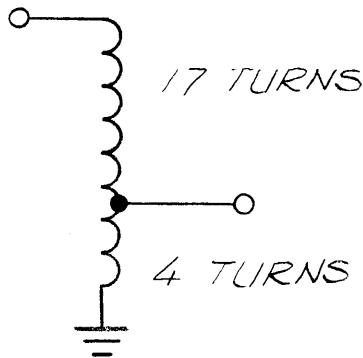
**NOTICE TO PERSONS RECEIVING THIS DRAWING**  
THE TECHNICAL MATERIEL CORPORATION claims proprietary right in the material disclosed herein. This drawing is issued in confidence for engineering information only and may not be reproduced or used to manufacture anything shown hereon without permission from THE TECHNICAL MATERIEL CORPORATION to the user. This drawing is loaned for mutual assistance and is subject to recall at any time.

|           |                          |                   |            |
|-----------|--------------------------|-------------------|------------|
| SIZE<br>A | CODE IDENT. NO.<br>82679 | DWG NO.<br>TZ 227 | ISSUE<br>Ø |
| SCALE 1:1 |                          | SHEET OF          |            |

| APPLICATION |               |           | REVISIONS |                       |         |          |       |      |      |
|-------------|---------------|-----------|-----------|-----------------------|---------|----------|-------|------|------|
| QTY         | MODEL USED ON | ASS'Y NO. | LTR       | DESCRIPTION           | DATE    | E.M.N.NO | DRAFT | CHKD | APPD |
|             | MTR ( ) 150   |           | X         | EXP RELEASE           | 6.25.69 |          | GE    |      |      |
|             |               |           | Ø         | ORIG RELEASE FOR PROD | 7/17/69 | Ø        | CV    |      | JL   |



SPECIFICATIONS:  
 L-45  $\mu$ h  $\pm$  10%  
 Q-125 MIN  
 TEST FREQ-2.5 MCS



| REQ'D | ITEM | PART NUMBER | DESCRIPTION     | SYM. |
|-------|------|-------------|-----------------|------|
| X     | 3    | GL 130      | Q - DOPE        |      |
| X     | 2    | WI 123-2B   | WIRE, ELEC, MAG |      |
| 1     | 1    | CI 128-1    | CORE FERRAMIC   |      |

UNLESS OTHERWISE SPECIFIED DIMENSIONS ARE IN INCHES AND INCLUDE CHEMICALLY APPLIED OR PLATED FINISHES

| DECIMALS        | FRACTIONS |
|-----------------|-----------|
| .X $\pm$ .05    | 1/64      |
| .XX $\pm$ .01   | ANGLES    |
| .XXX $\pm$ .005 | 0° - 30'  |

|                     |              |
|---------------------|--------------|
| FINAL APPROVAL      | DATE         |
| MECH. DES.          | DATE         |
| ELECT. DES.         | DATE         |
| CHECKED             | DATE         |
| DRAWN G. EVANGELIST | DATE 6.25.69 |

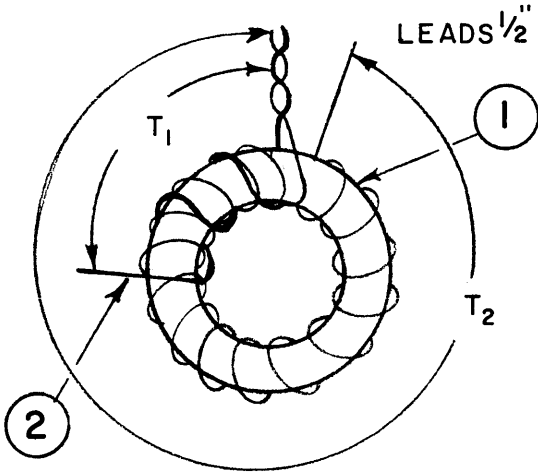
LIST OF MATERIAL

THE TECHNICAL MATERIEL CORP.  
 MAMARONECK, NEW YORK

TRANSFORMER RF

|   |      |                 |         |       |
|---|------|-----------------|---------|-------|
| NOTICE TO PERSONS RECEIVING THIS DRAWING<br>THE TECHNICAL MATERIEL CORPORATION claims proprietary right in the material disclosed hereon. This drawing is issued in confidence for engineering information only and may not be reproduced or used to manufacture anything shown hereon without permission from THE TECHNICAL MATERIEL CORPORATION to the user. This drawing is loaned for mutual assistance and is subject to recall at any time. | SIZE | CODE IDENT. NO. | DWG NO. | ISSUE |
|   | A    | 82679           | TZ 228  | Ø     |
| SCALE   |      | SHEET           |         | OF    |

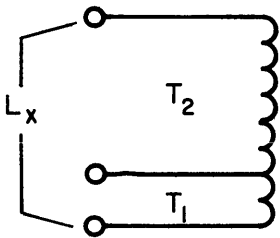
| APPLICATION |               |           | REVISIONS |                       |         |          |       |      |               |  |
|-------------|---------------|-----------|-----------|-----------------------|---------|----------|-------|------|---------------|--|
| QTY         | MODEL USED ON | ASS'Y NO. | LTR       | DESCRIPTION           | DATE    | E.M.N.NO | DRAFT | CHKD | APPD          |  |
|             | LFE-1         |           | X         | EXPERIMENTAL RELEASE  | 2-27-70 |          | KD    |      |               |  |
|             | CHG( )-4      |           | Ø         | ORIG RELEASE FOR PROD | 7/9/71  |          | CV    |      | <i>B.E.B.</i> |  |
|             | MMX( )-2      |           |           |                       |         |          |       |      |               |  |



LEADS  $\frac{1}{2}$ " LONG, TIN  $\frac{1}{8}$ " FROM COIL TO END

#### WIRING PROCEDURE

- ON CI127-9 WIND  $T_3$  TURNS OF ITEM 2  
TAP AT  $T_2$  TURNS AND WIND LAST  $T_1$  TURNS  
AS SHOWN.
- STAKE WITH GL103.  
BAKE AT 180°F FOR 30 MINUTES.
- COAT WITH GL102 AND BAKE AT 180°F  
FOR 30 MINUTES
- Q METER TEST —  $L = L_x \mu H \pm 2\%$   
 $Q = 400 \text{ MIN}$
- TEST AT Q METER TEST FREQUENCY



| XFMR     | $T_1$ | $T_2$ | $T_3$ | $L_x$ | WI141 |
|----------|-------|-------|-------|-------|-------|
| TZ 230-1 | 2     | 25    | 27    | 14    | -28   |
| TZ 230-2 | 10    | 30    | 40    | 28    | -30   |

| REQ'D | ITEM | PART NUMBER       | DESCRIPTION                         | SYM. |
|-------|------|-------------------|-------------------------------------|------|
| X     | 4    | GL102             | LACQUER, QMAX, A-27                 |      |
| X     | 3    | GL103             | ADHESIVE, NITRO-CELLULOSE BASE      |      |
| X     | 2    | WI141-(SEE CHART) | WIRE, ELECTRICAL, MAGNET, INSULATED |      |
| 1     | 1    | CI127-9           | CORE, TOROID                        |      |

UNLESS OTHERWISE SPECIFIED  
DIMENSIONS ARE IN INCHES  
AND INCLUDE CHEMICALLY APPLIED  
OR PLATED FINISHES

| DECIMALS    | FRACTIONS |
|-------------|-----------|
| .X ± .05    | 1/64      |
| .XX ± .01   | ANGLES    |
| .XXX ± .005 | 0°-30'    |

MATERIAL SEE NOTES  
FINISH SEE NOTES

| FINAL APPROVAL     | DATE    |
|--------------------|---------|
| <i>[Signature]</i> |         |
| MECH. DES.         | DATE    |
|                    |         |
| ELECT. DES.        | DATE    |
| <i>[Signature]</i> | 5/8/70  |
| CHECKED            | DATE    |
| <i>[Signature]</i> | 3/2/70  |
| DRAWN              | DATE    |
| Deienlein          | 2-27-70 |

#### LIST OF MATERIAL

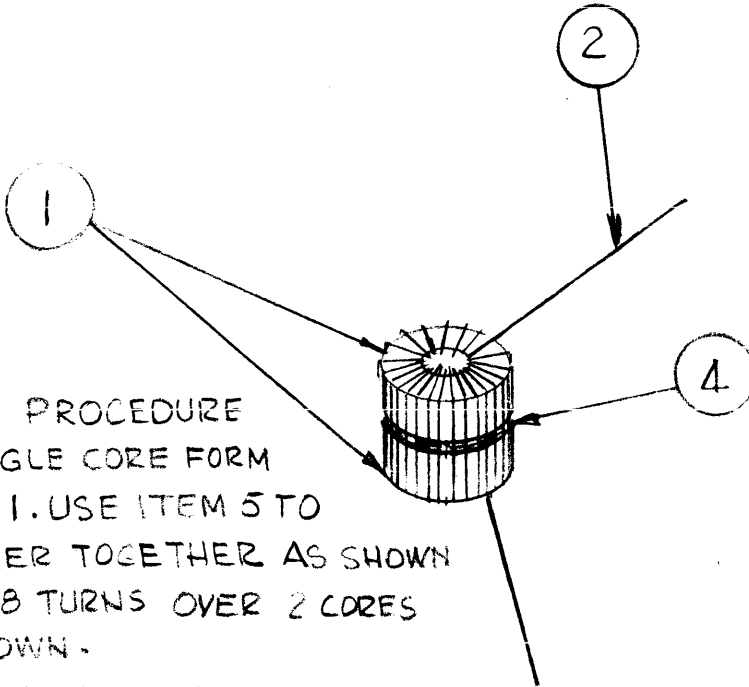
THE TECHNICAL MATERIEL CORP.  
MAMARONECK, NEW YORK

TRANSFORMER  
RF, TOROID

**NOTICE TO PERSONS RECEIVING THIS DRAWING**  
THE TECHNICAL MATERIEL CORPORATION claims proprietary right in the material disclosed hereon. This drawing is issued in confidence for engineering information only and may not be reproduced or used to manufacture anything shown hereon without permission from THE TECHNICAL MATERIEL CORPORATION to the user. This drawing is loaned for mutual assistance and is subject to recall at any time.

| SIZE  | CODE IDENT. NO. | DWG NO. | ISSUE |
|-------|-----------------|---------|-------|
| A     | 82679           | TZ 230  | Ø     |
| SCALE | SHEET           |         | OF    |

| APPLICATION |               |           | REVISIONS |                           |         |          |       |      |      |
|-------------|---------------|-----------|-----------|---------------------------|---------|----------|-------|------|------|
| QTY         | MODEL USED ON | ASS'Y NO. | LTR       | DESCRIPTION               | DATE    | E.M.N.NO | DRAFT | CHKD | APPD |
| 1           | ATSA-3        |           | X         | EXP RELEASE               | 1-10-74 |          |       |      |      |
|             |               |           | Ø         | ORIGINAL RELEASE FOR PROD | 8/76    |          | CL    |      | *    |



SCHMATIC

WINDING PROCEDURE

1. FROM SINGLE CORE FORM
- 2 OF ITEM 1. USE ITEM 5 TO FASTENER TOGETHER AS SHOWN
- 2- WIND 28 TURNS OVER 2 CORES AS SHOWN.
- 3- STAKE LEADS WITH ITEM 4.
- 4- BAKE 1/2 HR AT 215°F TO REMOVE MOISTURE.
5. COAT COIL WITH ITEM 4 AND BAKE 1/2HR AT 215°F
- 6- STRIP & TIN LEADS.

| REQ'D | ITEM | PART NUMBER | DESCRIPTION             | SYM. |
|-------|------|-------------|-------------------------|------|
| X     | 4    | GL105       | ADHESIVE                |      |
| X     | 3    | GL104-2     | INSULATION, VARNISH UBS |      |
| X     | 2    | WI 141-28   | WIRE ELECT MAGNETIC     |      |
| 2     | 1    | CI-127-5    | CORE, TOROID            |      |

UNLESS OTHERWISE SPECIFIED DIMENSIONS ARE IN INCHES AND INCLUDE CHEMICALLY APPLIED OR PLATED FINISHES

| REQ'D | ITEM | PART NUMBER | DESCRIPTION | SYM. |
|-------|------|-------------|-------------|------|
|-------|------|-------------|-------------|------|

LIST OF MATERIAL

| DECIMALS    | FRACTIONS |
|-------------|-----------|
| .X ± .05    | 1/64      |
| .XX ± .01   | ANGLES    |
| .XXX ± .005 | 0° - 30'  |

|                |              |
|----------------|--------------|
| FINAL APPROVAL | DATE         |
| * [Signature]  | 9.12-76      |
| MECH. DES.     | DATE         |
| ELECT. DES.    | DATE         |
| CHECKED        | DATE         |
| DRAWN GDL      | DATE 1-10-74 |

THE TECHNICAL MATERIEL CORP.  
MAMARONECK, NEW YORK

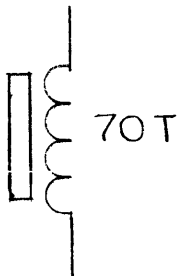
TOROID, SENSING

|          |
|----------|
| MATERIAL |
| FINISH   |

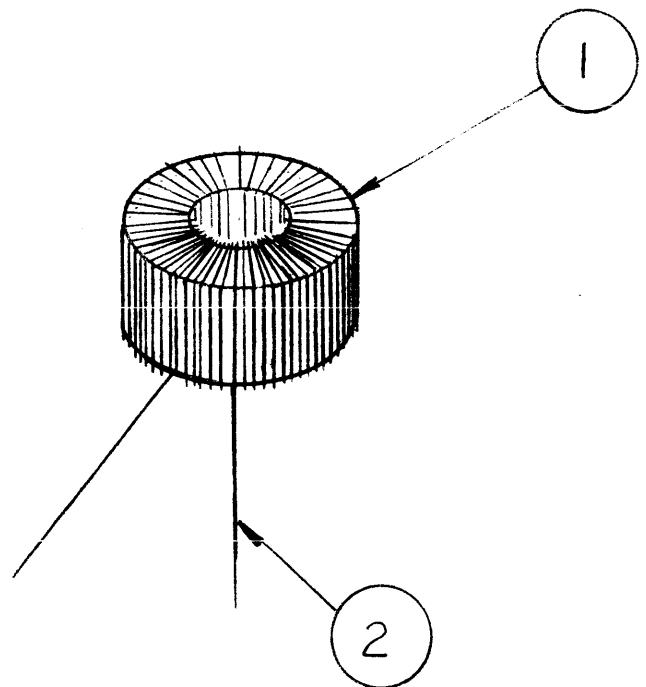
**NOTICE TO PERSONS RECEIVING THIS DRAWING**  
THE TECHNICAL MATERIEL CORPORATION claims proprietary right in the material disclosed hereon. This drawing is issued in confidence for engineering information only and may not be reproduced or used to manufacture anything shown hereon without permission from THE TECHNICAL MATERIEL CORPORATION to the user. This drawing is loaned for mutual assistance and is subject to recall at any time.

|       |                 |         |       |
|-------|-----------------|---------|-------|
| SIZE  | CODE IDENT. NO. | DWG NO. | ISSUE |
| A     | 82679           | TZ 233  | Ø     |
| SCALE | SHEET           |         | OF    |

| APPLICATION |               |           | REVISIONS |                       |         |          |       |      |      |  |
|-------------|---------------|-----------|-----------|-----------------------|---------|----------|-------|------|------|--|
| QTY         | MODEL USED ON | ASS'Y NO. | LTR       | DESCRIPTION           | DATE    | E.M.N.NO | DRAFT | CHKD | APPD |  |
| 1           | A5611         |           | X         | EXP. RELEASE          |         |          |       |      |      |  |
|             |               |           | Ø         | ORIG RELEASE FOR PROD | 3/13/75 |          |       | CL   |      |  |



SCHEMATIC



| REQ'D | ITEM | PART NUMBER | DESCRIPTION               | SYM. |
|-------|------|-------------|---------------------------|------|
| X     | 2    | WI-141-32-2 | WIRE ELECTRICAL, MAGNETIC |      |
| 1     | 1    | CI 128-1    | CORE, TOROID              |      |

UNLESS OTHERWISE SPECIFIED DIMENSIONS ARE IN INCHES AND INCLUDE CHEMICALLY APPLIED OR PLATED FINISHES

LIST OF MATERIAL

| DECIMALS    | FRACTIONS |
|-------------|-----------|
| .X ± .05    | 1/64      |
| .XX ± .01   | ANGLES    |
| .XXX ± .005 | 9°-30'    |

|                    |          |
|--------------------|----------|
| FINAL APPROVAL     | DATE     |
| <i>[Signature]</i> | 3/13/75  |
| MECH. DES.         | DATE     |
| F. IANNUZZI        | 2-7-75   |
| ELECT. DES.        | DATE     |
| CHECKED            | DATE     |
| F. IANNUZZI        | 12-14-74 |
| DRAWN              | DATE     |
| G.D.L              |          |

THE TECHNICAL MATERIEL CORP.  
MAMARONECK, NEW YORK

TRANSFORMER R.F.

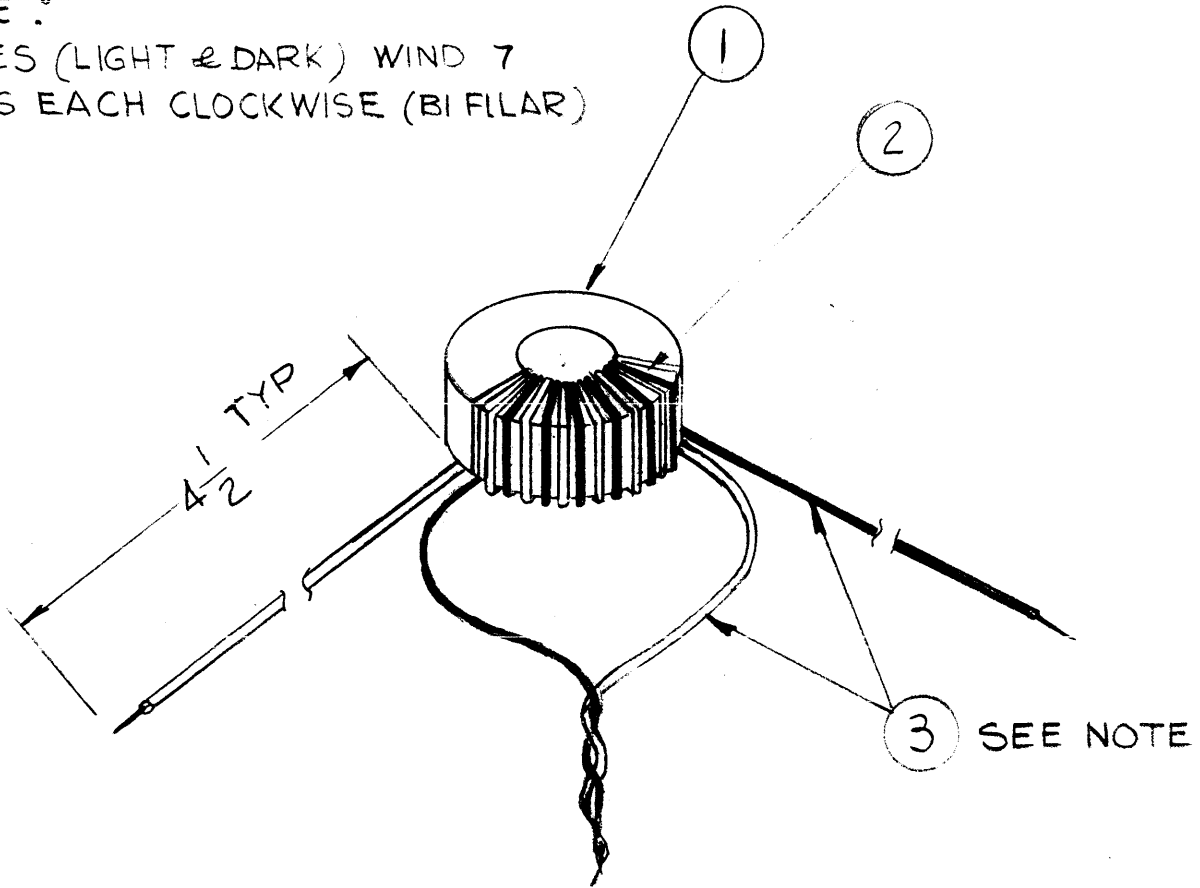
|          |
|----------|
| MATERIAL |
| FINISH   |

**NOTICE TO PERSONS RECEIVING THIS DRAWING**  
THE TECHNICAL MATERIEL CORPORATION claims proprietary right in the material disclosed hereon. This drawing is issued in confidence for engineering information only and may not be reproduced or used to manufacture anything shown hereon without permission from THE TECHNICAL MATERIEL CORPORATION to the user. This drawing is loaned for mutual assistance and is subject to recall at any time.

|       |                 |         |       |
|-------|-----------------|---------|-------|
| SIZE  | CODE IDENT. NO. | DWG NO. | ISSUE |
| A     | 82679           | TZ 235  | Ø     |
| SCALE |                 | SHEET   | OF    |

| APPLICATION |               |           | REVISIONS |                                     |         |          |       |      |      |
|-------------|---------------|-----------|-----------|-------------------------------------|---------|----------|-------|------|------|
| QTY         | MODEL USED ON | ASS'Y NO. | LTR       | DESCRIPTION                         | DATE    | E.M.N.NO | DRAFT | CHKD | APPD |
| 1           | TMA-1K        | BMA-520   | X         | EXP. RELEASE                        |         |          |       |      |      |
|             |               |           | X1        | ITEM 1 WAS CI128-1<br>6 TURNS NOW 7 |         |          |       | CDL  |      |
|             |               |           | Ø         | ORIG RELEASE FOR PROD               | 3/13/75 |          |       | Q    |      |

NOTE :  
2 WIRES (LIGHT & DARK) WIND 7  
TURNS EACH CLOCKWISE (BI FILAR)



|   |   |           |                     |  |
|---|---|-----------|---------------------|--|
| X | 4 | GL 130    | DUCO                |  |
| X | 3 | WI 125-11 | WIRE, ELEC. MAG #26 |  |
| X | 2 | TA 108-1  | TAPE                |  |
| 1 | 1 | CI 115    | CORE                |  |

UNLESS OTHERWISE SPECIFIED  
DIMENSIONS ARE IN INCHES  
AND INCLUDE CHEMICALLY APPLIED  
OR PLATED FINISHES

| REQ'D | ITEM | PART NUMBER | DESCRIPTION | SYM. |
|-------|------|-------------|-------------|------|
|-------|------|-------------|-------------|------|

LIST OF MATERIAL

| DECIMALS    | FRACTIONS    |
|-------------|--------------|
| .X ± .05    | 1/64         |
| .XX ± .01   | TOLS. ANGLES |
| .XXX ± .005 | 0° - 30°     |

FINAL APPROVAL *[Signature]* DATE 3/13/75

THE TECHNICAL MATERIEL CORP.  
MAMARONECK, NEW YORK

MATERIAL —

MECH. DES. F. IANNUZZI DATE 2-7-75

FINISH —

ELECT. DES. DATE

CHECKED F. IANNUZZI DATE

DRAWN G. DELUCIA DATE

TRANSFORMER, R.F.

NOTICE TO PERSONS RECEIVING THIS DRAWING  
THE TECHNICAL MATERIEL CORPORATION claims proprietary right in the material disclosed hereon. This drawing is issued in confidence for engineering information only and may not be reproduced or used to manufacture anything shown hereon without permission from THE TECHNICAL MATERIEL CORPORATION to the user. This drawing is loaned for mutual assistance and is subject to recall at any time.

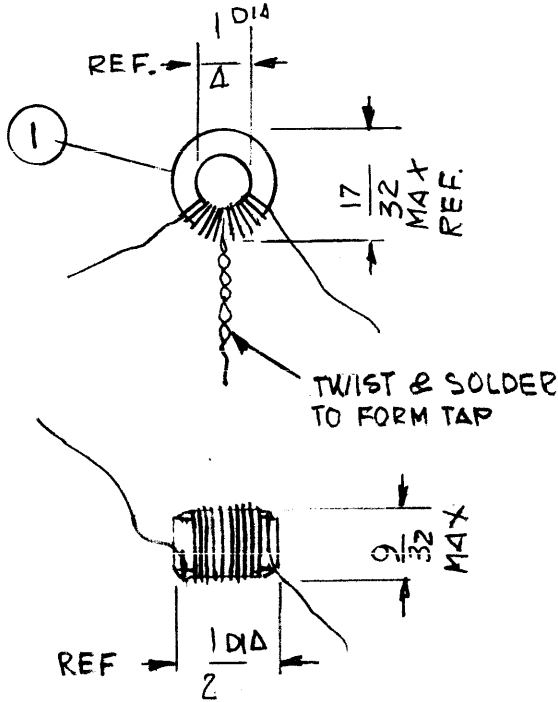
|           |                          |                   |            |
|-----------|--------------------------|-------------------|------------|
| SIZE<br>A | CODE IDENT. NO.<br>82679 | DWG NO.<br>TZ 236 | ISSUE<br>Ø |
| SCALE #   |                          | SHEET             | OF         |



APPLICATION

REVISIONS

| QTY | MODEL USED ON | ASS'Y NO. | LTR | DESCRIPTION | DATE | E.M.N.NO | DRAFT | CHKD | APPD |
|-----|---------------|-----------|-----|-------------|------|----------|-------|------|------|
| 1   | MMX-4         |           |     |             |      |          |       |      |      |

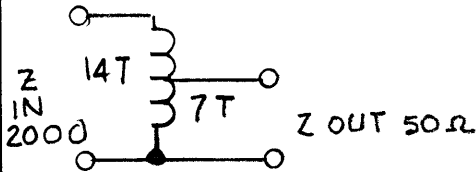


WINDING PROCEDURE

1. WIND 14 TURNS TAP AT 7 TURNS CLOSE WOUND OVER CORE AS SHOWN
2. STAKE LEADS WITH ITEM 4
3. SAKE 1/2 HR AT 215° F TO REMOVE MOISTURE
4. COAT COIL WITH ITEM 4 & BAKE 1/2 HR AT 215° F
5. STRIP & TIN LEADS ALL LEADS TO WITHIN 1/4" OF COIL
6. ALL LEADS TO BE 1/2" LONG

ELECT. SPECS. (FOR REF. ONLY)

Z IN 200 Ω APROX.  
Z OUT 50 Ω APROX.



|   |   |           |                         |
|---|---|-----------|-------------------------|
| X | 4 | BL104-2   | INSULATION, VARNISH U85 |
| X | 3 | BS100     | SOLDER, TIN ALLOY       |
| X | 2 | WI102-9-2 | WIRE, ELEC.             |
| 1 | 1 | CI127-7   | CORE, TOROID            |

UNLESS OTHERWISE SPECIFIED DIMENSIONS ARE IN INCHES AND INCLUDE CHEMICALLY APPLIED OR PLATED FINISHES

| REQ'D | ITEM | PART NUMBER | DESCRIPTION | SYM. |
|-------|------|-------------|-------------|------|
|-------|------|-------------|-------------|------|

LIST OF MATERIAL

|             |              |
|-------------|--------------|
| DECIMALS    | FRACTIONS    |
| .X ± .05    | 1/64         |
| .XX ± .01   | TOLS. ANGLES |
| .XXX ± .005 | 0° - 30'     |

|                |             |
|----------------|-------------|
| FINAL APPROVAL | DATE        |
| MECH. DES.     | DATE        |
| ELECT. DES.    | DATE        |
| CHECKED        | DATE        |
| DRAWN GDL      | DATE 7-3-85 |

THE TECHNICAL MATERIEL CORP.  
MAMARONECK, NEW YORK

TRANSFORMER  
BROAD BAND

|          |
|----------|
| MATERIAL |
| FINISH   |

NOTICE TO PERSONS RECEIVING THIS DRAWING  
THE TECHNICAL MATERIEL CORPORATION claims proprietary right in the material disclosed hereon. This drawing is issued in confidence for engineering information only and may not be reproduced or used to manufacture anything shown hereon without permission from THE TECHNICAL MATERIEL CORPORATION to the user. This drawing is loaned for mutual assistance and is subject to recall at any time.

|        |                       |                |         |
|--------|-----------------------|----------------|---------|
| SIZE A | CODE IDENT. NO. 82679 | DWG NO. TZ 237 | ISSUE X |
| SCALE  |                       | SHEET          | OF      |