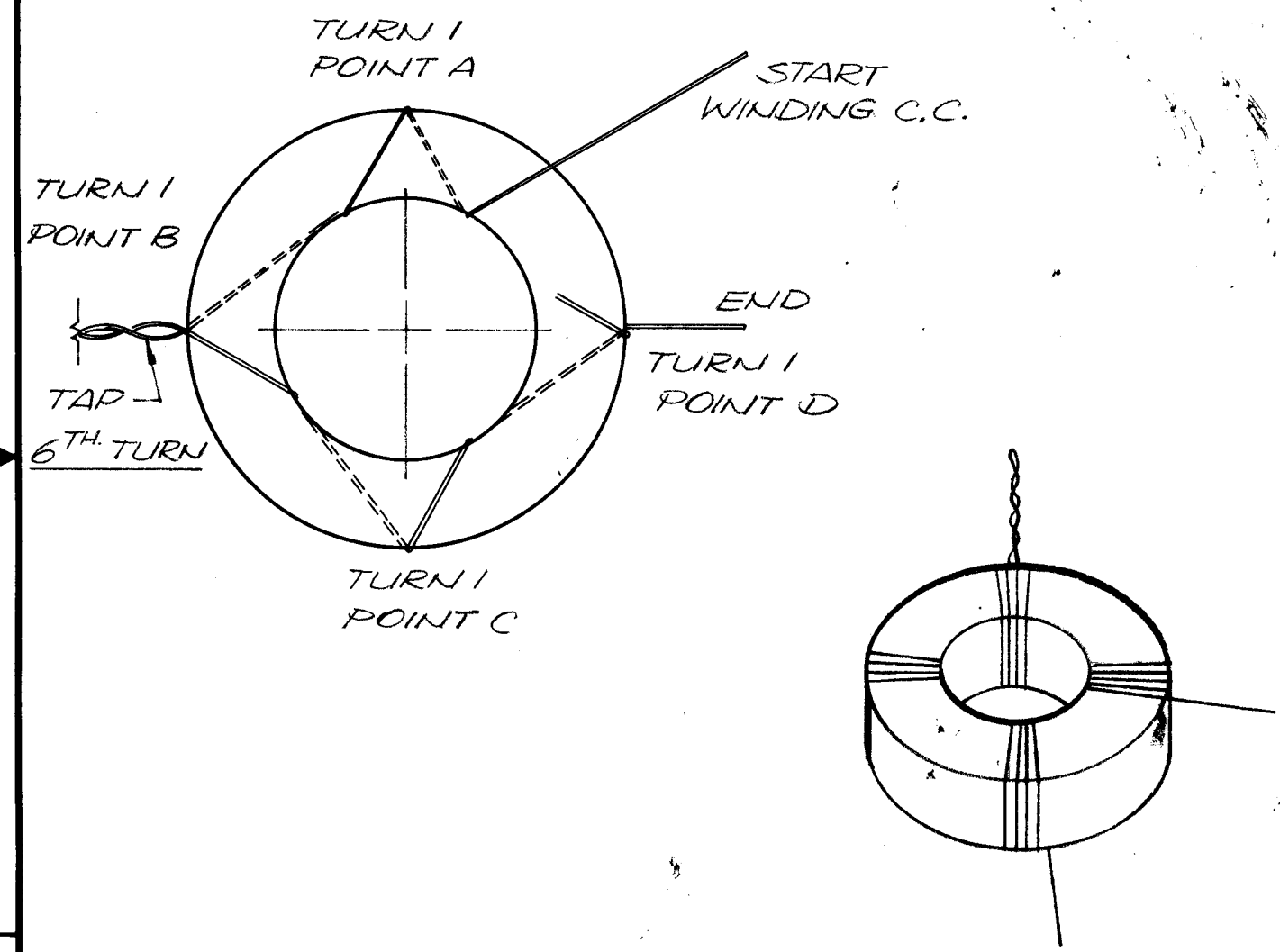


REVISIONS							
E.M.N. NO.	DRAFT	CHKD	ZONE	LTR	DESCRIPTION	DATE	APPROVED
	DL			Ø	ORIGINAL RELEASE FOR PRODUCTION	3-18-74	

NOTE:
 WRAP ITEM 3 ALL AROUND SURFACE OF CORE.
 PROCEED WINDING ITEM 1 AROUND CORE AS PER
 WINDING DIAGRAM. 16 TOTAL COUNTER CLOCKWISE
 TURNS, AND TAP AS NOTED. TAP TO BE WOUND &
 SOLDERED. TAP LENGTH APPROX. 2".

SPECIFICATIONS

TOTAL 16 TURNS C.C.W
 TAP @ 6TH. TURN POINT B, TAP LENGTH APPROX. 2"
 LEAD LENGTH APPROX 2 1/2" (START, END)



REQ'D ITEM	PART NUMBER	DESCRIPTION	SYM.
X 4	BS100	SOLDER TIN ALLOY	
X 3	TA101-2	TAPE	
1	CI 128-4	CORE	
X 1	WI-141-22	WIRE ELEC	

F.B. LIST OF MATERIAL

UNLESS OTHERWISE SPECIFIED DIMENSIONS ARE IN INCHES AND INCLUDE CHEMICALLY APPLIED OR PLATED FINISHES

FINAL APPROVAL: *FB* DATE: 3/8/74

MECH. DES. DATE

ELECT. DES. DATE

CHECKED DATE

DRAWN: *GE* DATE: 12/4/72

THE TECHNICAL MATERIEL CORP.
MAMARONECK, NEW YORK

INPUT, XFMR

SIZE	CODE IDENT. NO.	DWG NO.	ISSUE
B	82679	TZ 232	Ø

SCALE SHEET OF

1	ATU 350	
QTY / UNIT	MODEL USED ON	ASS'Y NO.
APPLICATION		
CODE		
NOTICE TO PERSONS RECEIVING THIS DRAWING THE TECHNICAL MATERIEL CORPORATION claims proprietary right in the material disclosed hereon. This drawing is issued in confidence for engineering information only and may not be reproduced or used to manufacture anything shown hereon without permission from THE TECHNICAL MATERIEL CORPORATION to the user. This drawing is loaned for mutual assistance and is subject to recall at any time.		
FINISH		