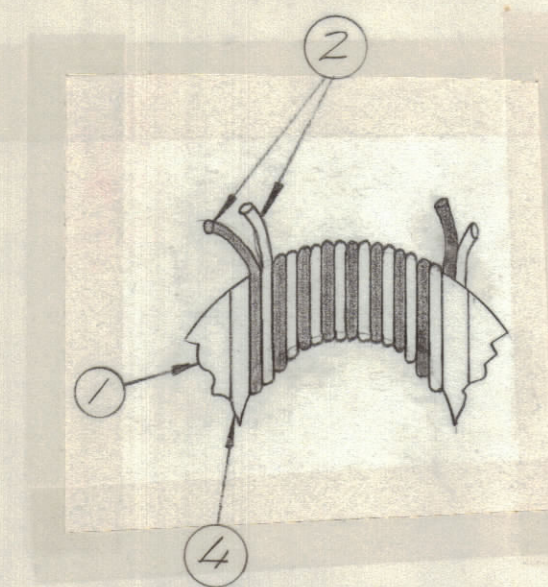


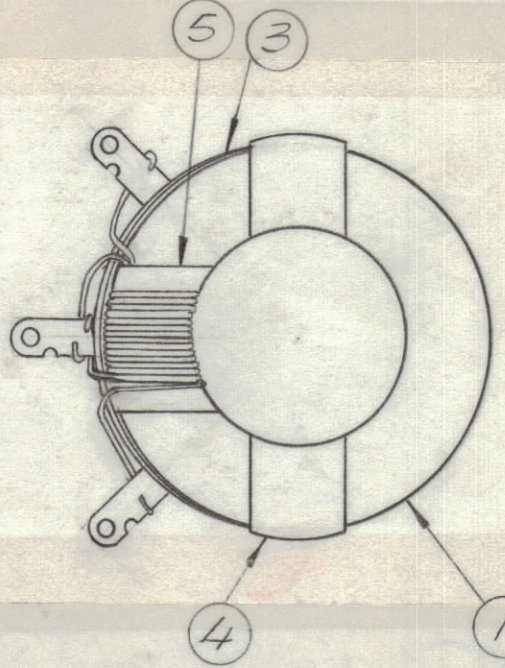
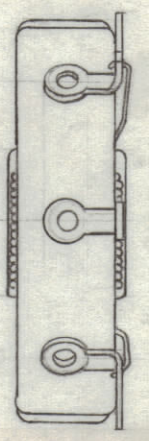
REVISIONS							
E.M.N.O	DRAFT	CHKD	ZONE	LTR	DESCRIPTION	DATE	APPROVED
2044	GE	(S)		A	REDRAWN	8/1/71	P.C.B.
20572	GE			B	CHG ITEM 10 FROM MS5933 TO BX 234	3/29/72	(S)

ASSEMBLY NOTES

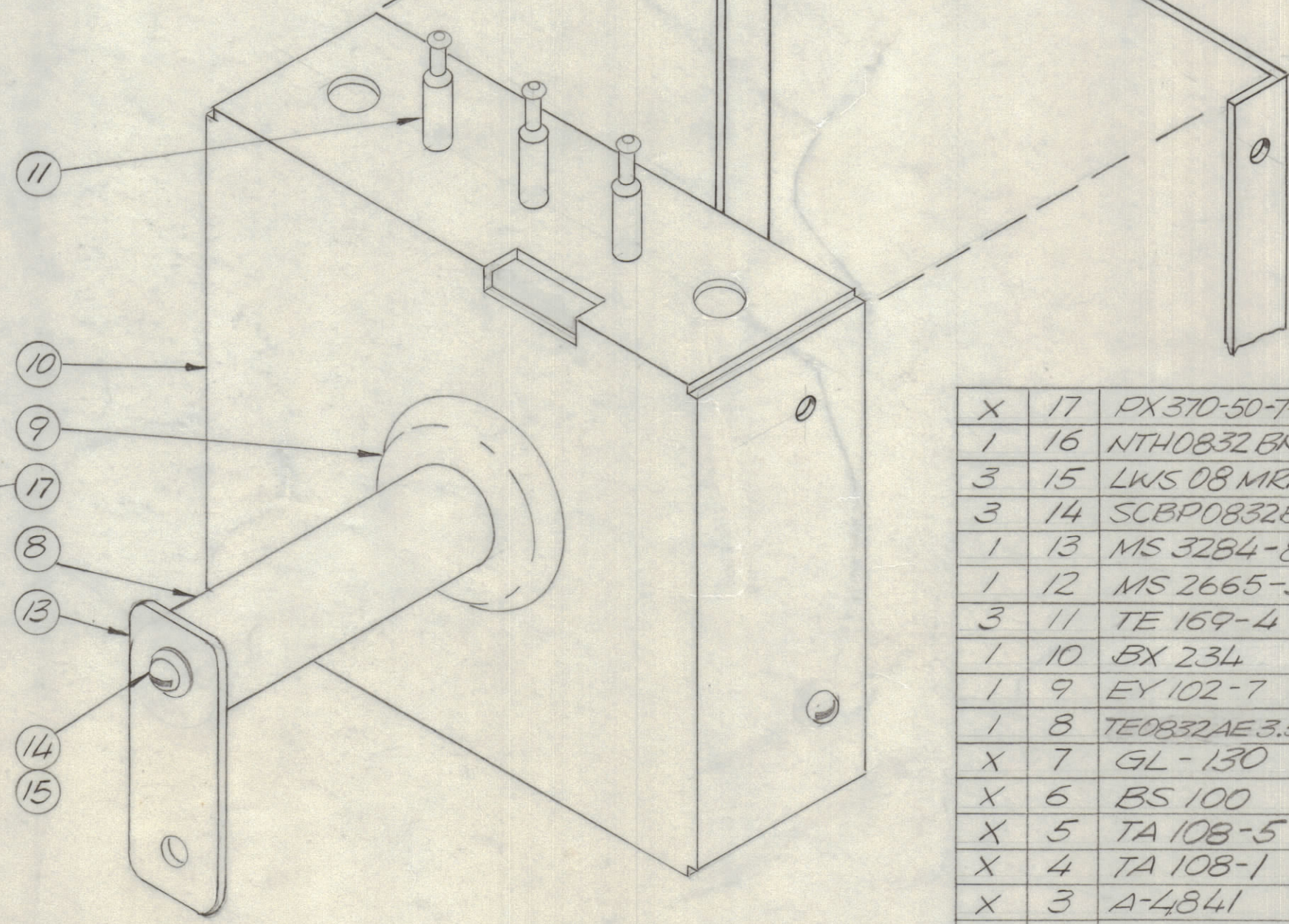
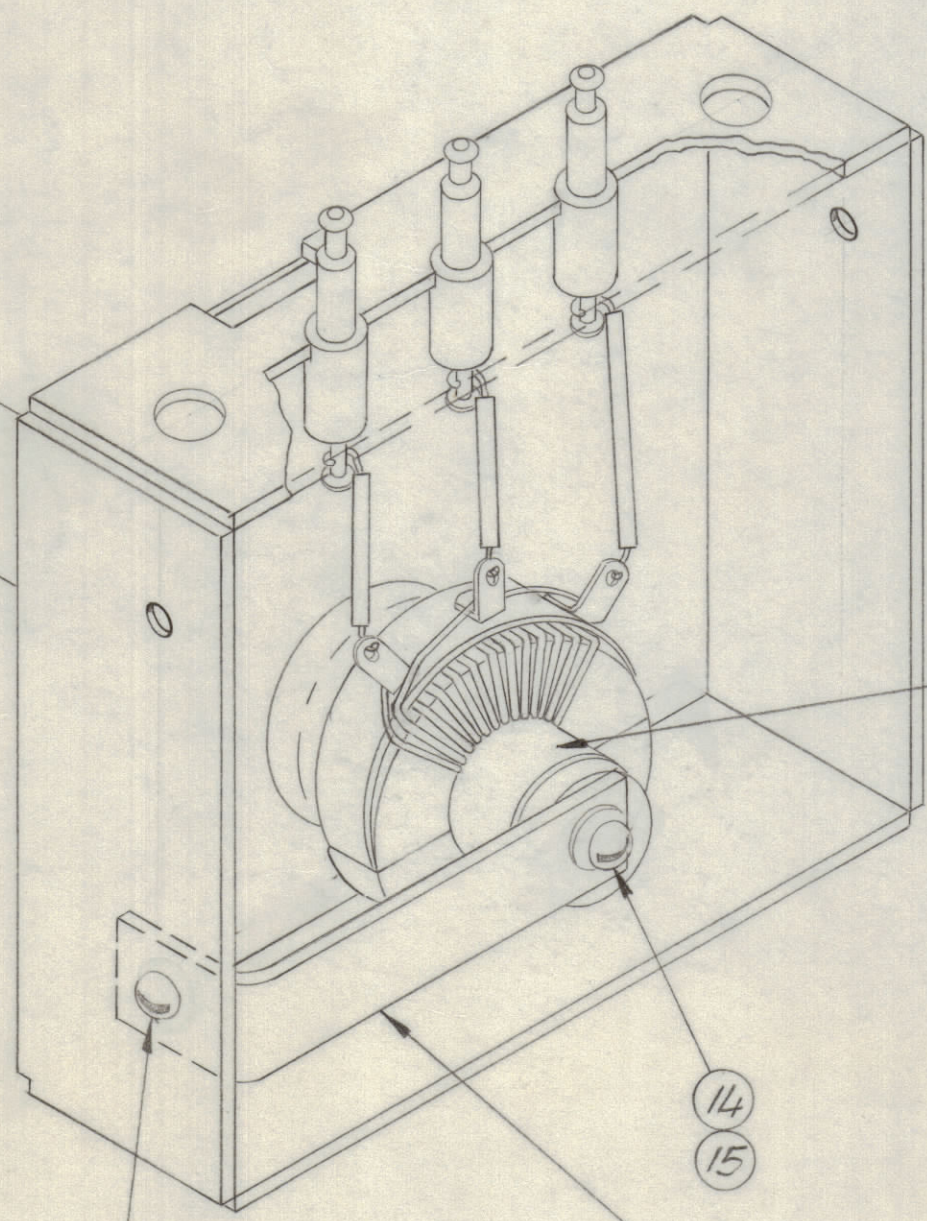
1. USING ITEM 1 WRAP 2 TURNS ITEM 5 AS SHOWN.
2. USING ITEM 2, WIND 7 TURNS (BIFILAR) CLOCKWISE (SEE DETAIL A.)
3. FASTEN ITEM 3 TO ITEM 1 WITH ITEM 4 AS SHOWN.
4. FASTEN ITEM 2 TO ITEM 3 WITH ITEM 6 AS SHOWN.



WIND ITEM 2 SEVEN TURNS CLOCKWISE (BIFILAR WOUND)



USE ITEM 4 TO FASTEN ENDS OF TERMINAL ASSEMBLY TO CORE.



QTY. REQ.	ITEM	PART NO.	DESCRIPTION	SYMBOL
X	17	PX370-50-7-R.15	INS. SLEEVING TEFLON	
1	16	NTH0832BN10	NUT, HEX	
3	15	LWS 08 MRN	WASHER, LOCK	
3	14	SCBP0832BN8	SCREW, MACHINE	
1	13	MS 3284-82	BRACKET	
1	12	MS 2665-38	BRACKET	
3	11	TE 169-4	TERMINAL INSUL FEED-THRU	
1	10	BX 234	BOX, XFMR	
1	9	EY 102-7	GROMMET RUBBER	
1	8	TE0832AE3.5R8	POST ELEC-MECH	
X	7	GL-130	DUCO CEMENT	
X	6	BS 100	SOLDER, TIN ALLOY ROSIN CORE	
X	5	TA 108-5	TAPE	
X	4	TA 108-1	TAPE	
X	3	A-4841	TERMINAL STRIP (INSULATED)	
X	2	WI 125-5	WIRE, ELEC.-MAG.-# 20	
1	1	CI 128-4	CORE	

LIST OF MATERIAL

FINAL APPROVAL	DATE
<i>Paul E. ...</i>	1/25/71
MECH. DES.	DATE
ELECT. DES.	DATE
CHECKED	DATE
<i>pe</i>	1/25/71
DRAWN	DATE
<i>GE</i>	8/1/71

THE TECHNICAL MATERIEL CORP.
MAMARONECK, NEW YORK

TRANSFORMER, RF

1	HFLA 10K	AX5114
QTY / UNIT	MODEL USED ON	ASS'Y NO.
APPLICATION		
CODE		

NOTICE TO PERSONS RECEIVING THIS DRAWING
THE TECHNICAL MATERIEL CORPORATION claims proprietary right in the material disclosed hereon. This drawing is issued in confidence for engineering information only and may not be reproduced or used to manufacture anything shown hereon without permission from THE TECHNICAL MATERIEL CORPORATION to the user. This drawing is loaned for mutual assistance and is subject to recall at any time.

UNLESS OTHERWISE SPECIFIED DIMENSIONS ARE IN INCHES AND INCLUDE CHEMICALLY APPLIED OR PLATED FINISHES	
TOLERANCES ON	
DECIMALS	FRACTIONS
.X ± .05	± 1/64
.XX ± .01	ANGLES
.XXX ± .005	± 0° -30'
MATERIAL	
FINISH	

SIZE	CODE IDENT NO.	DWG NO.	ISSUE
C	82679	TZ 229	B
SCALE NTS		SHEET	OF