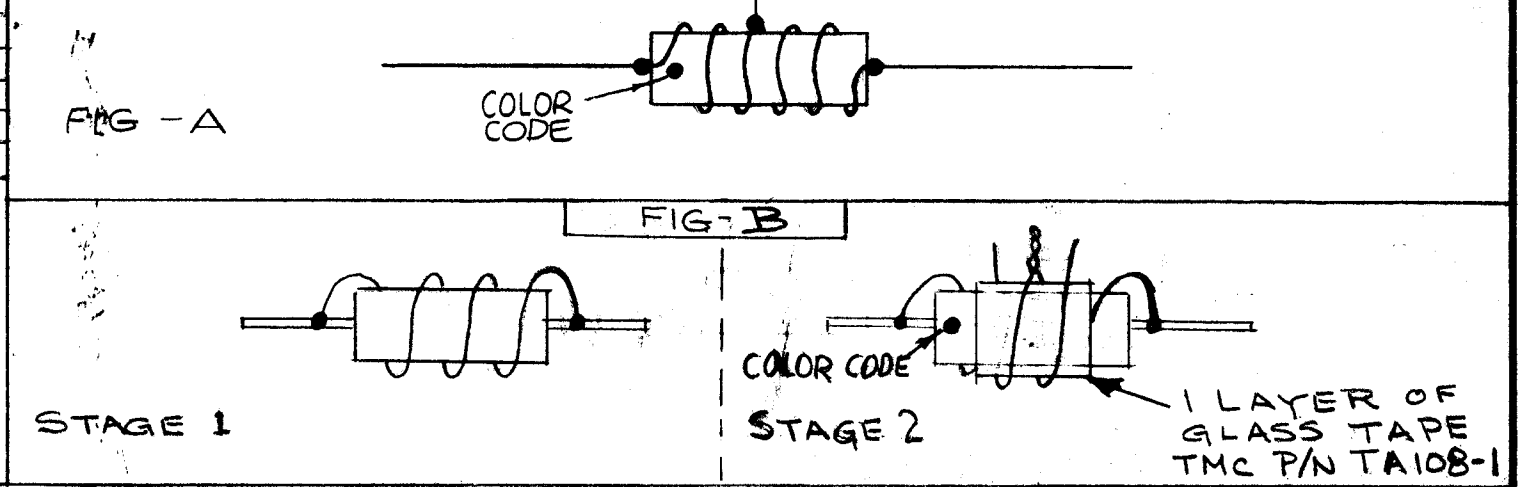


COIL NO.	L μ h \pm 3%	Q MIN	TEST FREQ	TYPE WIRE	NO OF TURNS	TAP LOCATION	COIL FORM	FIG.	COLOR CODE
TZ215-1	.18	65	25 Mc	WI-141-24	9.0	3.0	RC20GF183J	A	BROWN
TZ215-2	.23	80	25 Mc	WI-102-9	9.0	3.0	RC20GF226J	A	RED
TZ215-3	.36	80	25 Mc	WI-102-9-5 WI-102-9-9	PRI-12T SEC-8T	3.0	RC20GF226J	B	ORANGE
TZ215-4	.18	65	25 Mc	WI141-24-2	9.0	3.0	RC20GF226J	A	YELLOW
-5	.205	*		WI141-26-2	9.0	3.0	RC20GF821J	A	GREEN
-6	.205	*			9.0	2.5			BLUE
-7	.176	*			8.0	2.5			VIOLET
-8	.176	*			8.0	2.25			GRAY
-9	.155	*			7.0	2.25			WHITE
-10	.155	*			7.0	2.0	RC20GF821J		WHT/BLK
-11	.23	*			10.0	5.0	RC20GF103J		WHT/BRN
-12	.205	*	25 Mc	WI141-26-2	9.0	4.0	RC20GF333J	A	WHT/RED

REVISIONS						
SYM	DESCRIPTION	DATE	E.M.N. NO.	DRAFT	CHKD	APPD
X	EXPERIMENTAL RELEASE	11/7/66	X	RME		
X1	L \pm F3% & Q MIN 65 ADDED. TZ215-2 ADDED.	2-16-67		L.A.K.		
X2	"DWG" COL. ADDED; DWG REVISED & REDRAWN	3-16-67		G.W.		
X3	-2, -3 (NO. OF TURN REV.) -4 ADDED	4/25/67	X3			
X4	ADDED TZ215-5 THRU-12 & COLOR CODE. DEL. USED ON	6-30-67	X4	C.V.		
X5	TYPE WIRE FOR TZ215-3, -11, -12 CLARIFIED. COIL FORM FOR TZ215-12 WAS RC20GF152J.	8-28-67	X5	G.D.L.		
X6	TZ215-2 "L" WAS .35 μ h	10-13-67	X6	G.D.L.		
X7	RC20GF821J WAS RC20GF471J	11-30-67	X7			
\emptyset	ORIG. RELEASE FOR PRODUCTION	12-1-67	\emptyset	RG.		
A	ADDED NOTE X.	1/5/68	18707	HS		
B	ADDED TAP LOCATION TO -3	16/12/68	20168	GE	OU	G.E.



* NO TEST FOR "Q" REQUIRED

NOTES
 1 - ALL COILS CLOSE WOUND IN DIRECTION SHOWN.
 2 - APPLY GL104-2 AND BAKE IN OVEN AT 140°F FOR 1/2 HR.

Q'TY./UNIT	MODEL USED ON	ASS'Y. NO.
SCALE	CODE	S401-451
THE CONTENTS OF THIS DRAWING ARE THE EXCLUSIVE PROPERTY OF THE TECHNICAL MATERIEL CORP. ITS UNAUTHORIZED USE OR REPRODUCTION IN WHOLE OR IN PART IS STRICTLY FORBIDDEN.		

REQ'D.	ITEM	PART NUMBER	DESCRIPTION	SYMBOL
O. POSE LIST OF MATERIAL				
MATERIAL		THE TECHNICAL MATERIEL CORP. MAMARONECK, NEW YORK		
FINISH		TITLE TRANSFORMER, FIXED, RF		
UNLESS OTHERWISE SPECIFIED DIMENSIONS ARE IN INCHES AND INCLUDE CHEMICALLY APPLIED OR PLATED FINISHES		DRAWN RME	DATE 11/7/66	FINAL APPROVAL
DECIMALS .X \pm .05 .XX \pm .01 .XXX \pm .005		CHECKED	DATE 11-30-67	DATE 1/4/67
FRACTIONS \pm 1/64 ANGLES \pm 0° 30'		ELECT. DES.	DATE 1/30/67	TZ 215
TOLERANCES		MECH. DES.	DATE	B
			SHEET	REV. EYE

NOTES