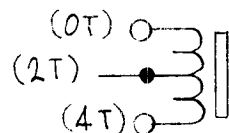
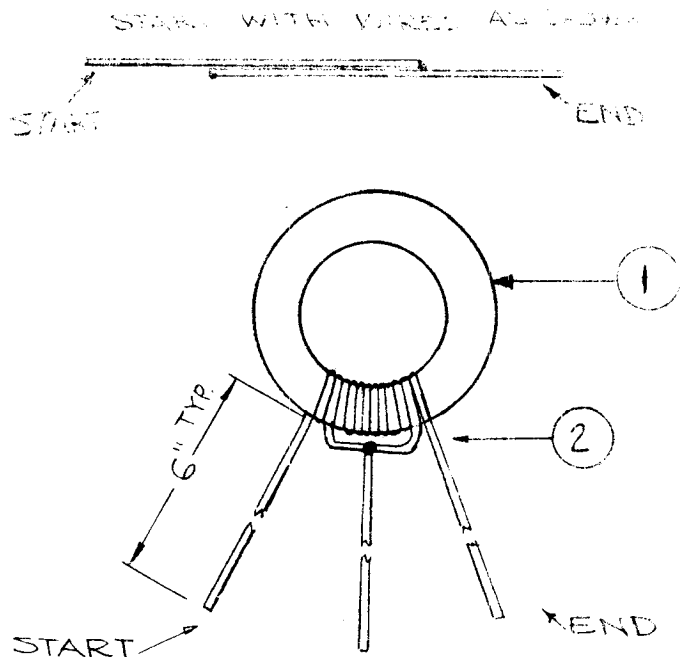


REQ. PER UNIT	USED ON			TZ 211	Ø
	MODEL	ASS'Y. NO.	DATE		
1	TSTE-10K	AX130	3-28-65		



SCHEMATIC (SYMBOL T 901)

PROCEDURE:

- 1- CLOSE WOUND 4 TURNS OF TWO LEADS (ITEM 2) EACH 17" LONG AROUND ITC. 1.
- 2- JOIN WIRES AS SHOWN & ADD 6" OF ITEM 2.
- 3- APPLY ITEM 3.

ELECTRICAL SPECIFICATIONS

$L = 5.5 \pm .6 \mu h$ END TO END.
 $1.4 \pm .5 \mu h$ CT TO END BALANCED.

REQ. ITEM	PART NO.	F. BUDETTI DESCRIPTION	SYMBOL
X 3	TA 102-1	INS. TAPE, ELECT. GLASS	
Y 2	WI122-25	WIRE, ELEC, MAG. T	
1 1	CI128-4	CORE, TOROID	
MATERIAL			
STOCK SIZE			
TYPE & TEMPER			
HEAT TREAT. SPEC.			
FINISH & SPEC. NO.			
DRAWN		QC/B	
CHECKED			
ELEC. DES. APP.			
MECH. DES. APP.			
		TZ 211	Ø

SYM	DESCRIPTION	DATE	CH. NO.	DRAFTS	CHECKER	ENG. APP.
Ø	ORIGINAL RELEASE	4-12-65	Ø	GDL		JH
X ₂	CI128-4 WAS CI128-2	10-18-65	X ₂			AM
X ₁	COMPLETELY REVISED	7-27-65	X ₁			
UNLESS OTHERWISE SPECIFIED DIMENSIONS ARE IN INCHES AND INCLUDE CHEMICALLY APPLIED OR PLATED FINISHES		SCALE 1:1				
DECIMALS .X ± .05 .XX ± .01 .XXX ± .005		TOLERANCES		FRACTIONS ± 1/64 ANGLES ± 0° 30'		CODE A