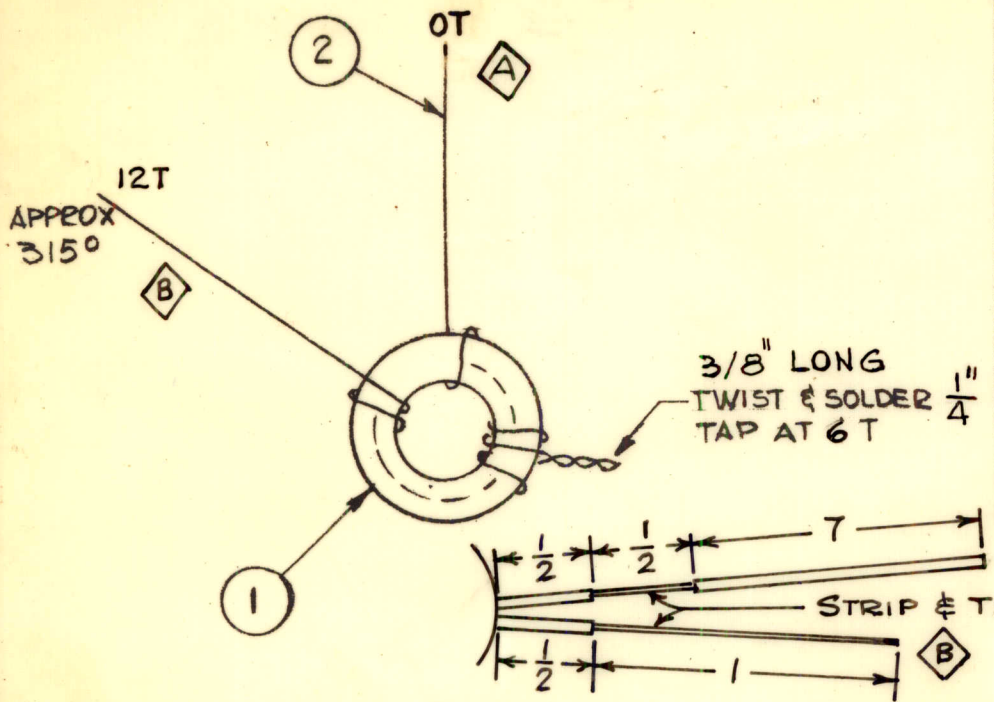


REQ. PER UNIT	USED ON			TZ204 C
	MODEL	ASS'Y. NO.	DATE	
1	CHG-3	AX 553	2-16-65	



- PROCEDURE -
- 1- WIND 12 TURNS IN THE DIRECTION SHOWN, EQUALLY SPACED OVER THE ANGLE SHOWN, WITHOUT OVERLAPPING TURNS.
 - 2- TAP AT THE NUMBER OF TURNS AS SHOWN.
 - 3- TURNS MAY BE PUSHED TOGETHER OR SPREAD APART AS NEEDED TO MEET INDUCTANCE.
 - 4- STAKE LEADS SECURELY WITH GL102.
 - 5- BAKE FOR 1/2 HR. AT 215°F. TO REMOVE MOISTURE
 - 6- COAT COIL & CORE WITH GL102 & BAKE 1/2 HR. AT 215°F.

ELECTRICAL SPECIFICATION

$L = 0.655 \pm 0.015 \mu h$
 $Q = 145 \text{ MIN AT } 14 \text{ MC}$
 $C_{dist} = 0.7 \pm 0.6 \text{ MMF}$

C	"Q" VALUE WAS 160 ± 15	1-6-67	17616	WJO		
B	GT WAS 4T	10/1/65	14915	F.V.V.		
A	DELE. DIM. 1/2 & 1; ADD. "A" & "B" IDENT.; ADD. DETAIL	6-23-65	14338	HKA		
Ø	ORIGINAL RELEASE FOR PRODUCTION	4-14-65	Ø	Ø		
X1	COMPLETELY REVISED	3-15-65		G.D.L.		
X	EXPER. RELEASE	2-17-65		G.D.L.		
SYM	DESCRIPTION	DATE	CH. NO.	DRAFTS	CHECKER	ENG. APP.
UNLESS OTHERWISE SPECIFIED DIMENSIONS ARE IN INCHES AND INCLUDE CHEMICALLY APPLIED OR PLATED FINISHES		SCALE DO NOT SCALE				
DECIMALS .X ± .05 .XX ± .01 .XXX ± .005	TOLERANCES	FRACTIONS ± 1/64 ANGLES ± 0° 30'	CODE A			

X	4	BS 100	SOLDER, TIN ALLOY		
X	3	GL102	Q-MAX		
X	2	WI 141-22-9	WIPE, ELEC. MAG.		
1	1	CI 127-1	CORE, TOROID		
REQ. ITEM		PART NO.	J- ANGER DESCRIPTION SYMBOL		
STOCK SIZE			THE TECHNICAL MATERIEL CORP. MAMARONECK, NEW YORK		
MATERIAL					
			TRANSFORMER, RF		
			DRIVER BAND*6		
TYPE & TEMPER		HEAT TREAT. SPEC.	DRAWN	CHECKED	FINAL APPROVAL
FINISH & SPEC. NO.		ELEC. DES. APP.	MECH. DES. APP.	TZ204 C	