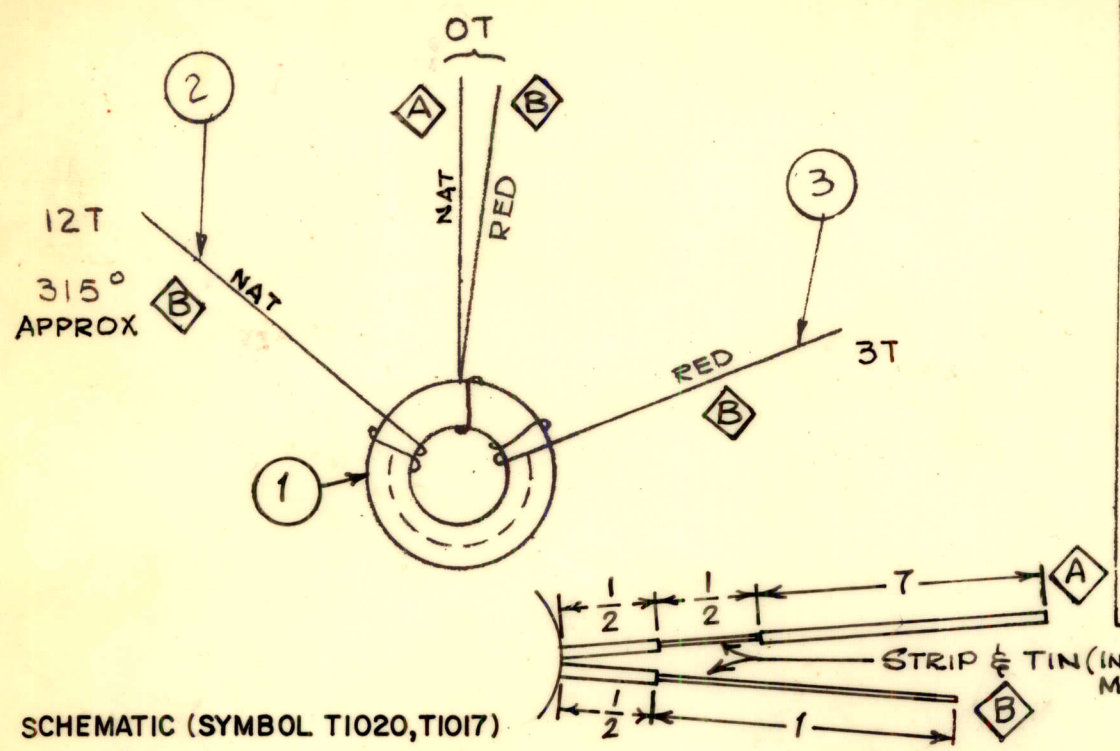
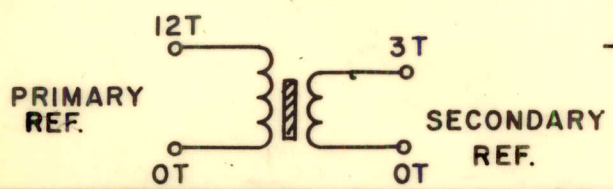


| | | | | |
|---------------|---------|------------|---------|----------|
| REQ. PER UNIT | USED ON | | | TZ 202 C |
| | MODEL | ASS'Y. NO. | DATE | |
| 2 | CHG-3 | AX 553 | 2-16-65 | |



- PROCEDURE -
- 1- WIND PRIMARY IN THE DIRECTION SHOWN, EQUALLY SPACED OVER THE ANGLE SHOWN, WITHOUT OVERLAPPING TURNS.
 - 2- WIND SECONDARY BETWEEN TURNS OF PRIMARY. NUMBER OF TURNS AS SHOWN.
 - 3- PRIMARY TURNS MAY BE PUSHED TOGETHER OR SPREAD APART AS NEEDED TO MEET INDUCTANCE.
 - 4- STAKE LEADS SECURELY WITH GL102.
 - 5- BAKE FOR 1/2 HR. AT 215°F. TO REMOVE MOISTURE.
 - 6- COAT COIL & CORE WITH GL102 & BAKE 1/2 HR. AT 215°F.

ELEC. SPECIFICATION
 $L = 0.655 \mu h \pm 0.015 \mu h$
 $Q = 160$ OR GREATER AT 14 MC
 $C_{dist} 0.7 \pm 0.6$ MMF



| | | | |
|--|---|---------------------------------|-----------------------------|
| X | 4 | GL 102 | Q-MAX |
| X | 3 | WI41-26-2 | WIRE, ELEC. MAG. |
| X | 2 | WI41-22-9 | WIRE, ELEC. MAG. |
| 1 | 1 | CI127-1 | CORE, TOROID |
| REQ. ITEM | | PART NO. | J. ANGER DESCRIPTION SYMBOL |
| THE TECHNICAL MATERIEL CORP. MAMARONECK, NEW YORK | | | |
| TRANSFORMER, RF | | | |
| OUTPUT BAND # 6 | | | |
| MATERIAL | | G.D.L. 2-16-65 | |
| TYPE & TEMPER | | HEAT TREAT. SPEC. | |
| DRAWN | | CHECKED | |
| FINAL APPROVAL | | ELEC. DES. APP. MECH. DES. APP. | |
| FINISH & SPEC. NO. | | TZ 202 C | |

| | | | | | | |
|---|---|--------------------|---------|--------|---------|-----------|
| C | Q TOL. WAS ±15, OR GREATER ADDED | 6-17-66 | 16416 | MAB | | |
| B | SYMBOL AND REF. ADDED | 8-27-65 | 14735 | W.V.A. | | |
| A | DELE. DIM. 1/2 & 1; ADD "A" "B" IDENT.; ADD. DETAIL | 6-23-65 | 14338 | H.L.A. | | |
| Ø | ORIGINAL RELEASE FOR PRODUCTION | 4-14-65 | Ø | J.S. | | |
| X ₁ | COMPLETELY REVISED | 3-15-65 | | G.D.L. | | |
| X | EXPER. RELEASE | 2-18-65 | | G.D.L. | | |
| SYM | DESCRIPTION | DATE | CH. NO. | DRAFTS | CHECKER | ENG. APP. |
| UNLESS OTHERWISE SPECIFIED DIMENSIONS ARE IN INCHES AND INCLUDE CHEMICALLY APPLIED OR PLATED FINISHES | | SCALE DO NOT SCALE | | | | |
| DECIMALS | FRACTIONS | CODE | | | | |
| .X ± .05 | ± 1/64 | A | | | | |
| .XX ± .01 | ANGLES | | | | | |
| .XXX ± .005 | ± 0° 30' | | | | | |