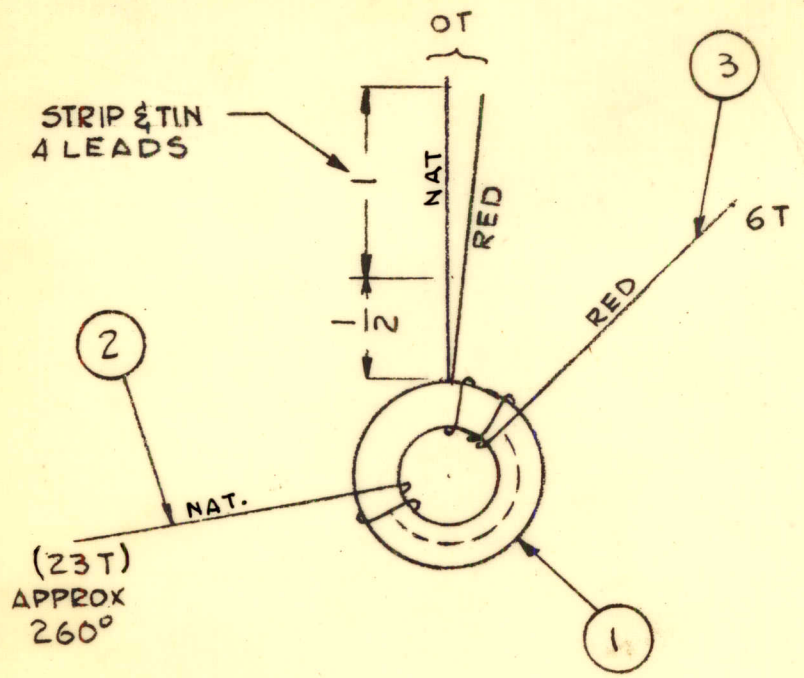
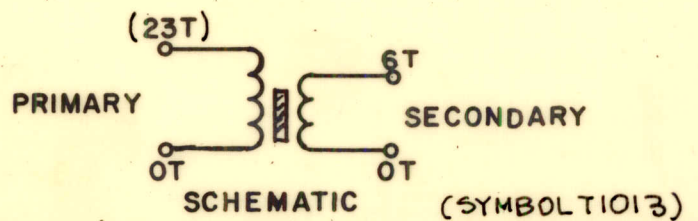


REQ. PER UNIT	USED ON			TZ 199	A
	MODEL	ASS'Y. NO.	DATE		
1	CHG-3	AX 551	2-16-65		



- PROCEDURE -
- 1- WIND PRIMARY IN THE DIRECTION SHOWN, EQUALLY SPACED OVER THE ANGLE SHOWN, WITHOUT OVERLAPPING TURNS.
 - 2- WIND SECONDARY BETWEEN TURNS OF PRIMARY. NUMBER OF TURNS AS SHOWN.
 - 3- NUMBER OF TURNS OF PRIMARY IS APPROX. AND TURNS MAY BE ADDED OR REMOVED TO MEET INDUCTANCE.
 - 4- STAKE LEADS SECURELY WITH GL 102.
 - 5- BAKE FOR 1/2 HR. AT 215°F. TO REMOVE MOISTURE.
 - 6- COAT COIL & CORE WITH GL 102 & BAKE 1/2 HR. AT 215°F.

ELEC. SPECIFICATION
 $L = 2.5 \mu h \pm 0.06 \mu h$
 PRI. $Q = 150 \text{ MIN AT } 7 \text{ MC.}$
 $C_{dist} 1.0 \pm 0.6 \text{ MMF}$



X	4	GL 102	Q-MAX
X	3	W141-26-2	WIRE, ELEC. MAG.
X	2	W141-24-9	WIRE, ELEC. MAG.
1	1	CI 127-1	CORE, TOROID

A	"Q" VALUE WAS 170 ± 20	1-6-67	17616	LFD	<i>[Signature]</i>
Ø	ORIGINAL RELEASE FOR PRODUCTION	4-14-65	Ø	<i>[Signature]</i>	
X _i	COMPLETELY REVISED	3-15-65		G.D.L.	<i>[Signature]</i>
X	EXPER. RELEASE	2-17-65		G.D.L.	

REQ. ITEM	PART NO.	J. ANGER	DESCRIPTION	SYMBOL
STOCK SIZE		THE TECHNICAL MATERIEL CORP. MAMARONECK, NEW YORK		
MATERIAL		TRANSFORMER, RF		
TYPE & TEMPER		OUTPUT BAND #4		
HEAT TREAT. SPEC.		G.D.L. 2-16-65	<i>[Signature]</i>	<i>[Signature]</i>
FINISH & SPEC. NO.		DRAWN	CHECKED	FINAL APPROVAL
		<i>[Signature]</i>		TZ 199 A
		ELEC. DES. APP.	MECH. DES. APP.	

UNLESS OTHERWISE SPECIFIED DIMENSIONS ARE IN INCHES AND INCLUDE CHEMICALLY APPLIED OR PLATED FINISHES		SCALE DO NOT SCALE	
DECIMALS	FRACTIONS	CODE	
.X ± .05	± 1/64	A	
.XX ± .01	ANGLES		
.XXX ± .005	± 0° 30'		
TOLERANCES			