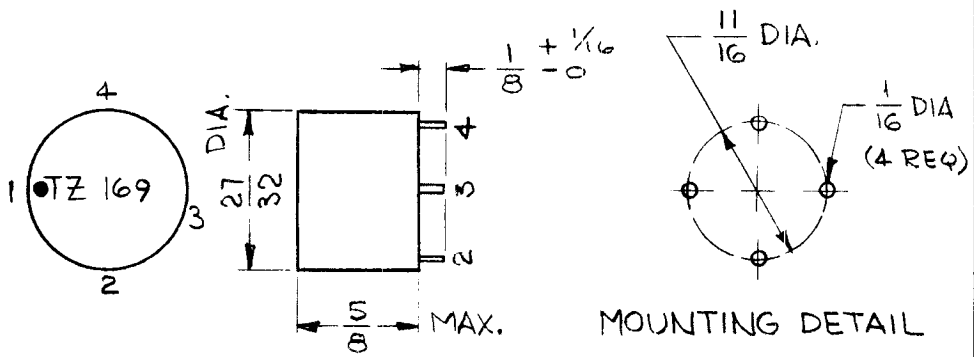


SYMBOL	FUNCTION	OPER. FREQ.	USED ON	REQ'D.
T403	8mc TANK,	8 mc	LFS-1	1
T406	10mc TANK,	10 mc	LFS-1	1
T642	8mc TANK,	8 mc	LFS-1	5

REQ. PER UNIT	USED ON			TZ 169	0
	MODEL	ASS'Y. NO.	DATE		
-#-	SEE CHART		9-23-63		



- TRANSFORMER, R.F. FIXED -

WINDING DATA:

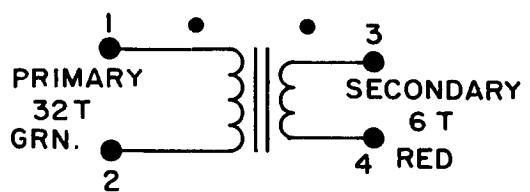
WINDING NO. 1 (PRIMARY)  
 NOM. IND. - 7.0  $\mu$ h  
 NO. OF TURNS - 32

WINDING NO. 2 (SECONDARY)  
 NOM. IND. - .7  $\mu$ h  
 NO. OF TURNS - 6

COIL FORM DATA:  
 MATERIAL - POWERED IRON

CASE DATA:  
 MATERIAL - POTTED  
 COLOR - GREEN

TERMINAL DATA:  
 QUANTITY - 4  
 TYPE - STAKED LUGS



● INDICATES START OF WINDING

— SCHEMATIC DIAGRAM —

REQ.	ITEM	PART NO.	M. GELLMAN	DESCRIPTION	SYMBOL		
		#		THE TECHNICAL MATERIEL CORP. MAMARONECK, NEW YORK			
		SEE SPECS		TRANSFORMER, R.F. FIXED			
0	ORIGINAL RELEASE	7-27-64					
SYM	DESCRIPTION	DATE	CH. NO.	DRAFTS	CHECKER	ENG. APP.	
UNLESS OTHERWISE SPECIFIED DIMENSIONS ARE IN INCHES AND INCLUDE CHEMICALLY APPLIED OR PLATED FINISHES		SCALE DO NOT SCALE					
DECIMALS X ± .05 .XX ± .01 .XXX ± .005	TOLERANCES	FRACTIONS ± 1/64 ANGLES ± 0° 30'	CODE A	2A 3452			
			#	#	<i>G. Sanchez</i>	<i>RCL</i>	
			TYPE & TEMPER	HEAT TREAT. SPEC.	DRAWN	CHECKED	FINAL APPROVAL
			#		<i>W</i>	<i>R/S</i>	TZ 169
			FINISH & SPEC. NO.	ELEC. DES. APP.	MECH. DES. APP.		0