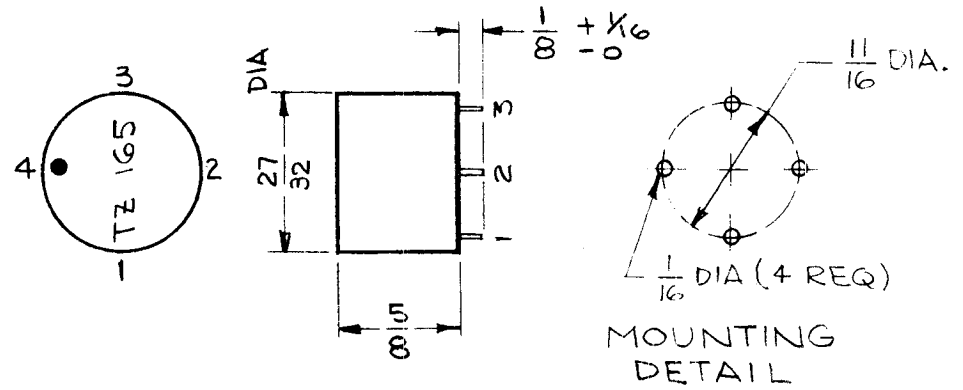


SYMBOL	FUNCTION	OPER FREQ.	USED ON	REQ.
T601	10 MC TANK	10 MC	LFS-1	5
T647	10 MC TANK	10 MC	LFS-1	5
T701	10 MC TANK	10 MC	LFS-1	1
T702	10 MC TANK	10 MC	LFS-1	1

REQ. PER UNIT	USED ON		
	MODEL	ASSY. NO.	DATE
1	SEE CHART		9-24-63

TZ 165- \emptyset



-TRANSFORMER, R.F. FIXED

WINDING DATA:

WINDING NO. 1 (PRIMARY)
 NOMINAL INDUCTANCE - 1.75 uh
 NO. OF TURNS - 15

WINDING NO. 2 (SECONDARY)
 NOMINAL INDUCTANCE - .7 uh
 NO. OF TURNS - 6

COIL FORM DATA:

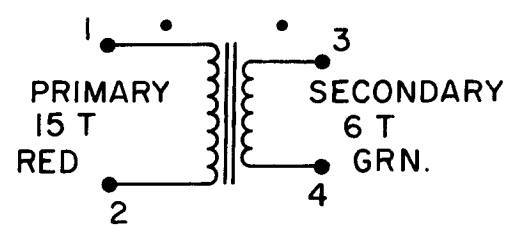
MATERIAL - POWDERED IRON

CASE DATA:

MATERIAL - POTTED
COLOR - BLUE

TERMINAL DATA:

QUANTITY - 4
TYPE - STAKED LUGS



• INDICATE START OF WINDING

— SCHEMATIC DIAGRAM —

REQ. ITEM	PART NO.	M. GELLMAN	DESCRIPTION	SYMBOL									
	—		THE TECHNICAL MATERIEL CORP. MAMARONECK, NEW YORK										
	SEE SPECS		TRANSFORMER, R.F. FIXED										
SYMBOL	DESCRIPTION	DATE	CH. NO.	DRAFTS	CHECKER	ENG. APP.	MATERIAL	TYPE & TEMPER	HEAT TREAT. SPEC.	DRAWN	CHECKED	FINAL APPROVAL	
\emptyset	ORIGINAL RELEASE	7-27-64	*	SPL						G. Jones		R	
UNLESS OTHERWISE SPECIFIED DIMENSIONS ARE IN INCHES AND INCLUDE CHEMICALLY APPLIED OR PLATED FINISHES		SCALE	—										
DECIMALS .X \pm .05 .XX \pm .01 .XXX \pm .005	TOLERANCES	FRACTIONS \pm 1/64 ANGLES \pm 0° 30'	CODE A	2A 3448									TZ 165- \emptyset
FINISH & SPEC. NO.		ELEC. DES. APP.		MECH. DES. APP.									