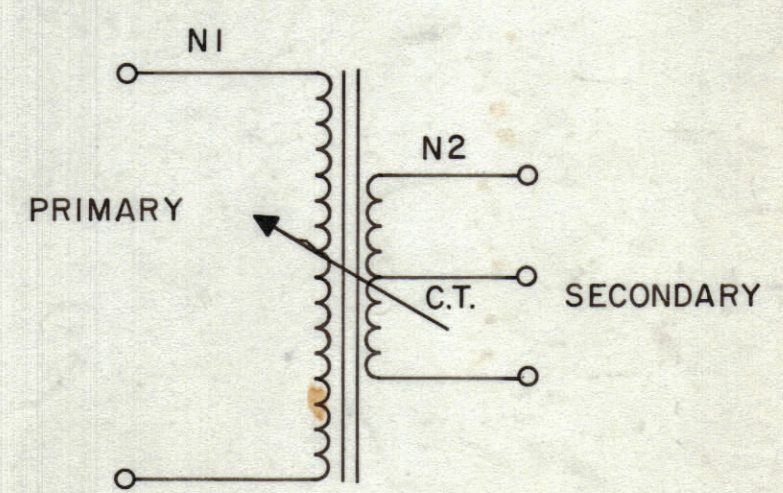
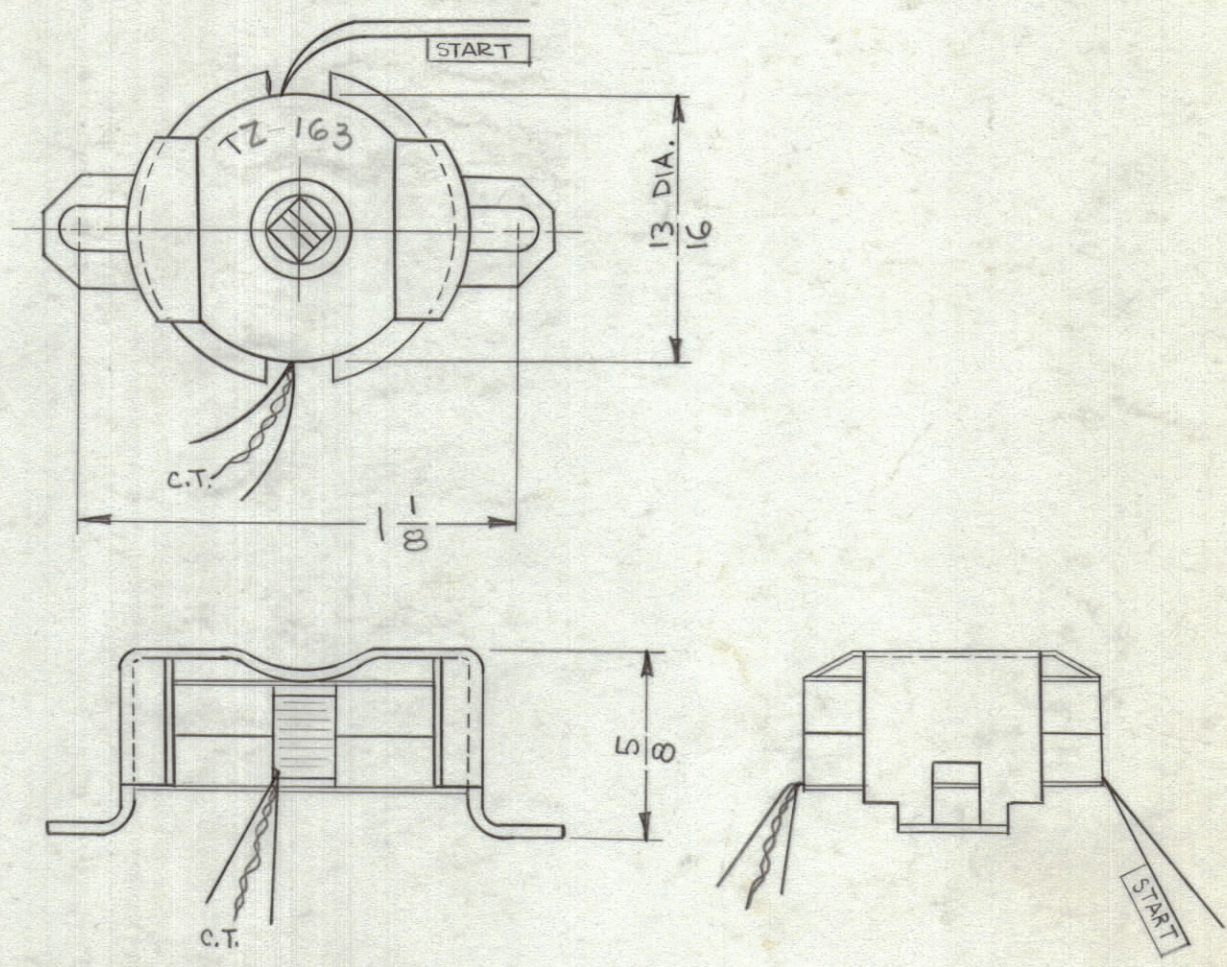


TMC PART NO.	SYMBOL	FUNCTION	OPER. FREQ. RANGE	USED ON	QUANTITY
TZ 163-11	T204	3 <sup>RD</sup> R.F. TRANS	10-12 KC	VLR-1	1
TZ 163-13	T204	3 <sup>RD</sup> R.F. TRANS	12-14 KC	VLR-1	1
TZ 163-16	T204	3 <sup>RD</sup> R.F. TRANS	14-18 KC	VLR-1	1
TZ 163-21	T204	3 <sup>RD</sup> R.F. TRANS	18-24 KC	VLR-1	1
TZ 163-27	T204	3 <sup>RD</sup> R.F. TRANS	24-30 KC	VLR-1	1
TZ 163-60	T204	3 <sup>RD</sup> R.F. TRANS	55-65 KC	VLR-1	1

REVISIONS						
ZONE	SYM	DESCRIPTION	DATE	E.M.N. NO.	DRAFT	CHKD
#	X1	TZ-163-60 ADDED TO CHARTS	12/1/63	1		
H6	X2	TZ-163-60, FREQ RANGE WAS 54-66 KC	2/2/64	2		
	O	ORIGINAL RELEASE FOR PRODUCTION	5/12/64	0	A.M.	@

**SPECIFICATIONS :** ~~RETUNED~~

WINDING DATA #1 (N<sub>1</sub>) MAIN WINDING, PRIMARY.  
 NOM. IND. - SEE CHART  
 NO. OF TURNS - SEE CHART  
 WINDING DATA #2 (N<sub>2</sub>) LINK, SECONDARY, C.T.  
 NOM. IND. - SEE CHART  
 NO. OF TURNS - SEE CHART  
 NO. OF TAPS - 1  
 NO. OF TURNS TAPPED - SEE CHART  
 COIL FORM DATA:  
 MATERIAL - BOBBIN, NYLON  
 TUNING DEVICES:  
 QUANTITY - 1  
 TYPE - ADJUSTABLE FERRITE CORE  
 CASE DATA:  
 MATERIAL - NICKEL SILVER  
 TERMINALS:  
 QUANTITY - 6  
 TYPE - N<sub>1</sub>, 3" WIRE LEADS;  
 N<sub>2</sub>, 2" WIRE LEADS.



SCHEMATIC DIAGRAM

TMC PART NO.	WINDING DATA #1 (N <sub>1</sub> )		WINDING DATA #2 (N <sub>2</sub> ) C.T.	
	NOM. IND.	NO. OF TURNS	NOM. IND.	NO. OF TURNS
TZ 163-11	3.3	73	N. R.	42
TZ 163-13	2.9	69	N. R.	40
TZ 163-16	2.3	61	N. R.	24
TZ 163-21	1.8	54	N. R.	22
TZ 163-27	1.4	48	N. R.	16
TZ 163-60	0.5	29	N. R.	10

N.R. = NOT RATED

**NOTES**

SEE CHART	SEE CHART	A-3212
Q'TY./UNIT	MODEL USED ON	ASSY. NO.
SCALE 4A-3212	CODE A	
THE CONTENTS OF THIS DRAWING ARE THE EXCLUSIVE PROPERTY OF THE TECHNICAL MATERIEL CORP. ITS UNAUTHORIZED USE OR REPRODUCTION IN WHOLE OR IN PART IS STRICTLY FORBIDDEN.		

REQ'D.	ITEM	PART NUMBER	DESCRIPTION	SYMBOL
M. GELLMAN LIST OF MATERIAL				
MATERIAL			THE TECHNICAL MATERIEL CORP. MAMARONECK, NEW YORK	
FINISH			TITLE TRANSFORMER, R.F. TUNED	
UNLESS OTHERWISE SPECIFIED DIMENSIONS ARE IN INCHES AND INCLUDE CHEMICALLY APPLIED OR PLATED FINISHES	DRAWN	DATE	FINAL APPROVAL	DATE
DECIMALS X ± .05 XX ± .01 XXX ± .005	CHECKED	DATE		
FRACTIONS ± 1/64 ANGLES ± 0° 30'	ELECT. DES.	DATE	TZ 163	0
TOLERANCES	MECH. DES.	DATE		
		SHEET		REV. LTR.

TZ 163 0

**STANDARD DRAWING**