

TMC PART NO.	SYMBOL NO.	FUNCTION	OPER. FREQ RANGE	USED ON	QUANTITY
TZ-161-11	T201	1 <sup>ST</sup> R.F. TRANS.	10-12 KC	VLR-1	1
TZ-161-13	T201	1 <sup>ST</sup> R.F. TRANS.	12-14 KC	VLR-1	1
TZ-161-16	T201	1 <sup>ST</sup> R.F. TRANS.	14-18 KC	VLR-1	1
TZ-161-21	T201	1 <sup>ST</sup> R.F. TRANS.	18-24 KC	VLR-1	1
TZ-161-27	T201	1 <sup>ST</sup> R.F. TRANS.	24-30 KC	VLR-1	1
TZ-161-60	T201	1 <sup>ST</sup> R.F. TRANS.	55-65 KC	VLR-1	1

REVISIONS						
ZONE	SYM	DESCRIPTION	DATE	E.M.N. NO.	DRAFT	CHKD
X1		TZ-161-60 ADDED TO CHARTS	12/19/63	1		MP
X2		TZ-161-60, OPER. FREQ RANGE WAS 54-66 KC	2/14/64	2		MP
O		ORIGINAL RELEASE FOR PRODUCTION	5/12/64	0		A.M.

**SPECIFICATIONS:**

FORMER R.F. TUNED

WINDING DATA #1 (N<sub>1</sub>): LINK, PRIMARY  
 NOMINAL INDUCTANCE - SEE CHART  
 NUMBER OF TURNS - SEE CHART

WINDING DATA #2 (N<sub>2</sub>): MAIN WINDING, SECONDARY  
 NOMINAL INDUCTANCE - SEE CHART  
 NUMBER OF TURNS - SEE CHART

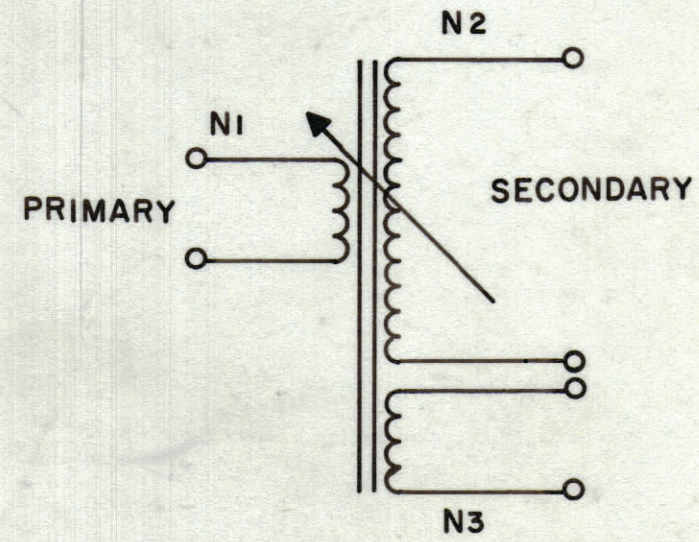
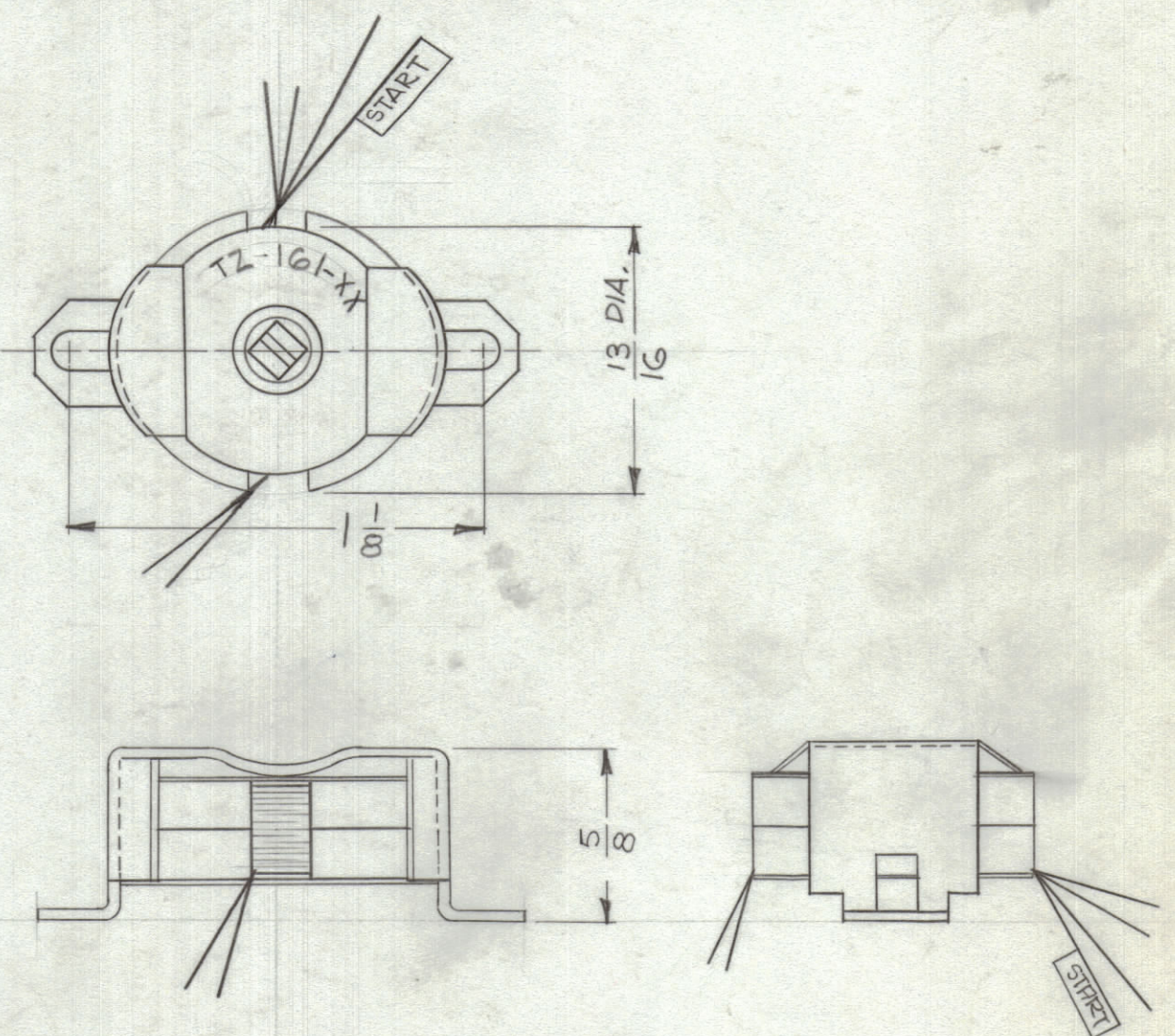
WINDING DATA #3 (N<sub>3</sub>): LINK, SECONDARY  
 NOMINAL INDUCTANCE - SEE CHART  
 NUMBER OF TURNS - SEE CHART  
 NUMBER OF TAPS - 2 ONE  
 NUMBER OF TURNS TAPPED - SEE CHART

COIL FORM DATA:  
 MATERIAL - BOBBIN, NYLON

TUNING DEVICES:  
 QUANTITY - 1  
 TYPE - ADJUSTABLE FERRITE CORE

CASE DATA:  
 MATERIAL - NICKEL SILVER

TERMINALS:  
 QUANTITY - 6  
 TYPE - N<sub>1</sub> AND N<sub>3</sub>, 2" WIRE LEADS  
 N<sub>2</sub>, 3" WIRE LEADS



**SCHEMATIC DIAGRAM**

TMC PART NO.	WINDING DATA #1 (N <sub>1</sub> )		WINDING DATA #2 (N <sub>2</sub> )		WINDING DATA #3 (N <sub>3</sub> )	
	NOM. IND.	NO. OF TURNS	NOM. IND.	NO. OF TURNS	NOM. IND.	NO. OF TURNS
TZ 161-11	N. R.	4	3.3	73	N. R.	20
TZ 161-13	N. R.	4	2.9	69	N. R.	19
TZ 161-16	N. R.	2	2.3	61	N. R.	13
TZ 161-21	N. R.	2	1.8	54	N. R.	11
TZ 161-27	N. R.	2	1.4	58	N. R.	10
TZ 161-60	N. R.	1	0.5	29	N. R.	3

REQ'D.	ITEM	PART NUMBER	DESCRIPTION	SYMBOL

REQ'D.	ITEM	PART NUMBER	DESCRIPTION	SYMBOL

**LIST OF MATERIAL**

M. GELLMAN

**THE TECHNICAL MATERIEL CORP.**  
MAMARONECK, NEW YORK

**TRANSFORMER, R.F. TUNED**

UNLESS OTHERWISE SPECIFIED DIMENSIONS ARE IN INCHES AND INCLUDE CHEMICALLY APPLIED OR PLATED FINISHES

DECIMALS: .X ± .05, .XX ± .01, .XXX ± .005  
 FRACTIONS: ± 1/64, ANGLES: ± 0° 30'

TOLERANCES

DRAWN: G. Green, DATE: 5-8-64, FINAL APPROVAL: [Signature], DATE: [Blank]  
 CHECKED: [Signature], DATE: [Blank]  
 ELECT. DES: [Signature], DATE: [Blank]  
 MECH. DES: [Signature], DATE: 5-7-64

TZ-161

REV. LTR. 0

N.R. = NOT RATED

**NOTES**

SEE CHART SEE CHART 4A-3270

Q'TY./UNIT MODEL USED ON ASS'Y. NO.

SCALE 4A-3270 CODE A

THE CONTENTS OF THIS DRAWING ARE THE EXCLUSIVE PROPERTY OF THE TECHNICAL MATERIEL CORP. ITS UNAUTHORIZED USE OR REPRODUCTION IN WHOLE OR IN PART IS STRICTLY FORBIDDEN.