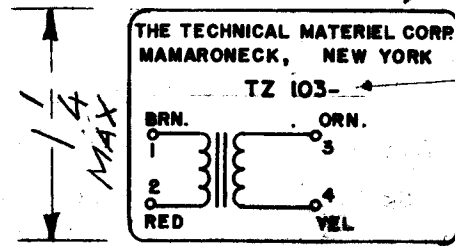
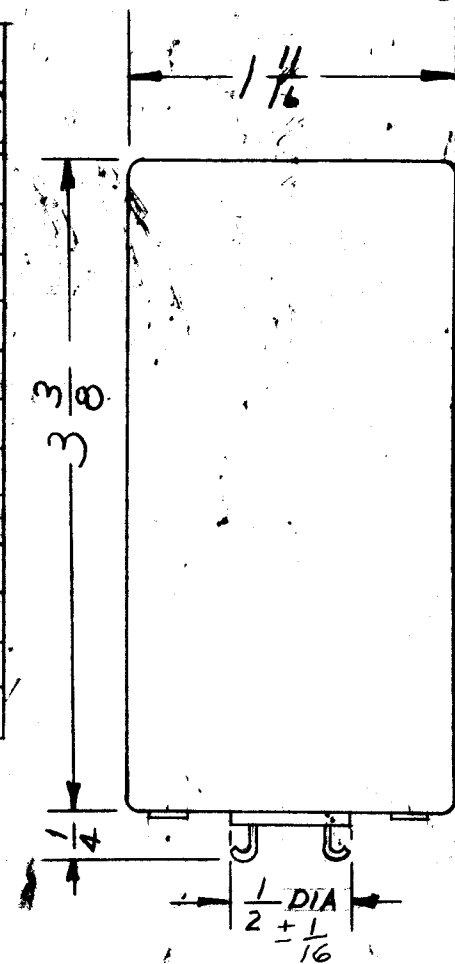


TZ 103

BLACK GOTHIC LETTERING
AS SHOWN



TMC PART NO.
(TO BE STAMPED
AS PER CHART).



TMC PART NO.	IND. ±2%	L TEST FREQ.	Q UNLOADED	Q TEST FREQ.	Q LOADED	C REQUIRED TO RESONATE	
						AT TEST FREQ.	AT TEST FREQ.
TZ 103-1	96uh	1KC	203-348	410KC	75-120	263.9	1570uuf
			232-362	320KC	85-125	ufd	2577uuf
TZ 103-2	116uh	1KC	232-336	445KC	45-71	218.3	1103uuf
			220-316	355KC	48-88	ufd	1733uuf
TZ 103-3			185-272	455KC	40-60	132.6	805.6uuf
			195-292	355KC	55-72	ufd	1052uuf
TZ 103-4			190-230	36KC	88-105	13	16290uuf
			190-230	27KC	110-128	ufd	18290uuf
TZ 103-5			190-210	39.5KC	48-62	21	13590uuf
			165-210	30.5KC	57-75	ufd	22690uuf
TZ 103-6			180-225	39.5KC	45-66	15	8839uuf
			190-225	30.5KC	55-78	ufd	16590uuf

MECHANICAL SPECIFICATIONS

- CASE - Hermetically Sealed, MU-METAL
 - FINISH - S115 TMC Smooth Grey Enamel, Except Terminal End.
 - SIZE O/A - 1-3/16 X 1-11/16 X 3-3/8 High.
 - STAMPING - Terminals Shall Be Stamped 1/8 High Black Gothic. Opposite End Shall Be Stamped As Shown.
- Secondary Terminals 3 and 4 on Schematic are Loaded With 47 ohms.**

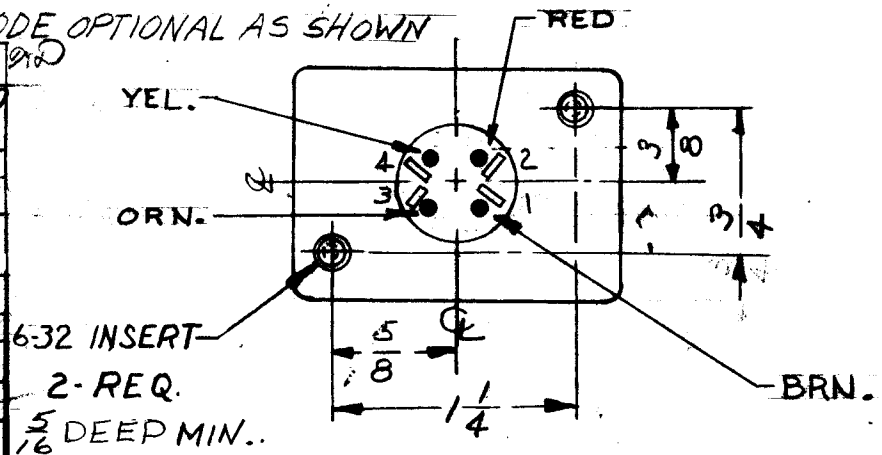
NOTE: Manufactured in accordance with MIL SPEC T-27-A except that MIL SPEC T-27-A shall not appear on case and qualification testing is not required.

EQUIPMENT USED FOR TESTS:
Boonton Type 260-A Q Meter, or equivalent
Boonton Type 564-A Transformer or equiv.
Marconi Type TF144H Generator, or equiv.

NOTE: IF COLOR CODING IS OMITTED ON BASE, OMIT COLOR REFERENCE ON TOP ALSO.

SYM	DESCRIPTION	DATE	CH. NO.	DRAFTS	CHECKER	ENG. APP.
J	DIM CHG. 1 3/16 TO 1 1/4 MAX	7/15/65	19509	GE	KD	OP.
H	CHG'D Q FR. LOADED TO UNLOADED, IND WAS 1% CHG'D UNLOADED 1, 2, & 3. CHG'D Q LOADED ON 2 & 3.	8-2-66	16702	RME		
G	1 1/4 DIM. LINE RELOCATED TO MTS. INSIDE	4/15/66	16211	JL		
F	5/16 DEEP WAS MAX.	11/16/65	15107	RVV.		
E	PICT. OPTIONAL 5/16 DEEP MAX. SPECS. NOTE IF ADDED.	10/25/65	15027	H.V.		
D	UPDATED CHART W/CHANGES	4/2/69	10644			
C	ON IND. COLUMN, TOL ±1% ADDED	7-10-63	8506			
B	CASE MAT'L. WAS STEEL	3-7-63	8467			
A	ON CHART, Q UNLOADED & Q LOADED CLARIFIED	7-24-62	7223			

COLOR CODE OPTIONAL AS SHOWN



UNLESS OTHERWISE SPECIFIED:
DIMENSIONS ARE IN INCHES
TOLERANCES ON FRACTIONS ± 1/64 DECIMALS ± .005 ANGLES ± 1/2°

SCALE: SA 01-151
MAXIMUM ALLOWABLE TOLERANCES HAVE BEEN DETERMINED AND ANY DEVIATIONS WILL BE CAUSE FOR REJECTION. REMOVE ALL BURRS AND SHARP EDGES

1	HFS-1			8-17-62
REQ. PER UNIT	MODEL	SECTION	ASSY. NO.	DATE
USED ON				

REQ.	ITEM	PART NO.	J. STRUMMER DESCRIPTION	SYMBOL
THE TECHNICAL MATERIEL CORP. MAMARONECK, NEW YORK				
STOCK SIZE				
TRANSFORMER, R.F.				
MATERIAL				
		By [Signature]		[Signature]
TYPE & TEMPER		HEAT TREAT. SPEC.		FINAL APPROVAL
FINISH & SPEC. NO.		SPEC. DES. APP. MECH. DES. APP.		TZ 103 J