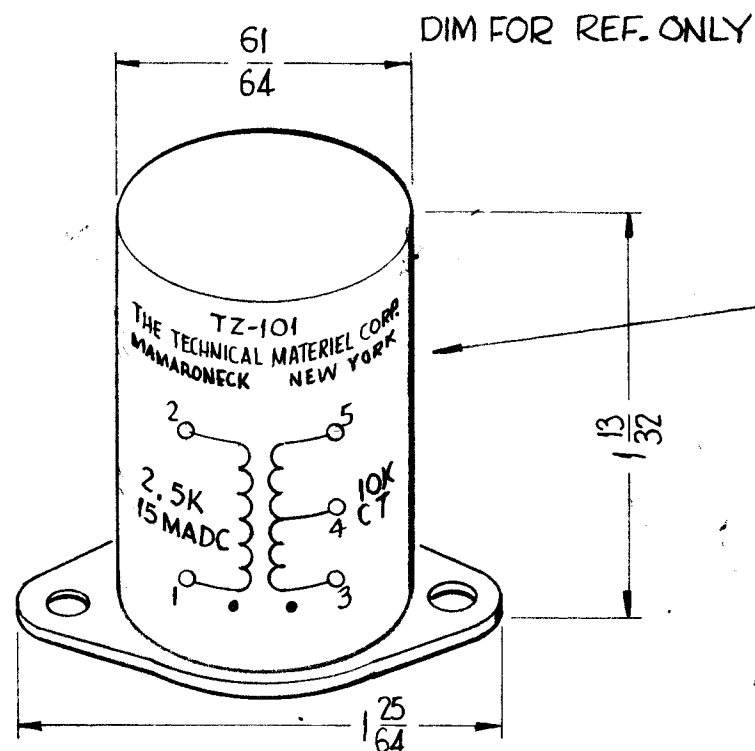


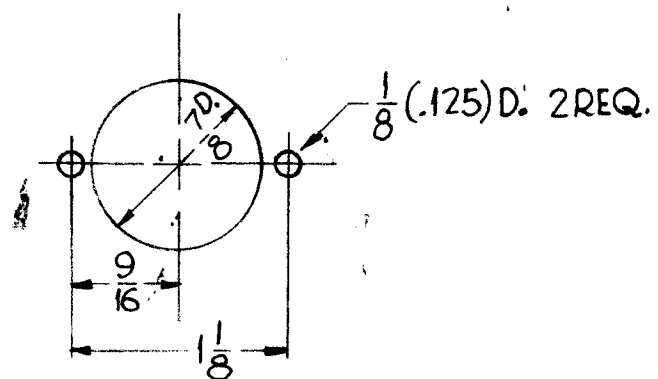
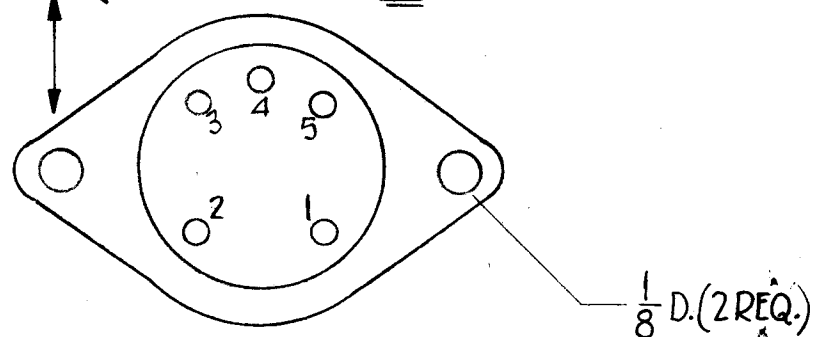
THE CONTENTS OF THIS DRAWING ARE THE EXCLUSIVE PROPERTY OF THE TECHNICAL MATERIEL CORP. ITS UNAUTHORIZED USE OR REPRODUCTION IN WHOLE OR IN PART IS STRICTLY FORBIDDEN.

TZ-101



STAMP AS SHOWN
BLACK GOTHIC

NOTE ~ MTG. FLANGE MAY BE WITH SLOTS OR HOLES.



DRILLING PLAN

RECOMMENDED APPLICATION ~ SINGLE PLATE TO PUSH - PULL GRIDS
MILITARY TYPE ~
PRI. IMP. OHMS ~ 2.5K, 15ma
SEC. IMP. OHMS ~ 10K
FREQUENCY ~ 10kc - 50kc WITHIN 3db
POWER ~ 1mW
INSULATION ~ 1500 VOLTS
RATIO OF TURNS OVERALL PRI. TO OVERALL SEC - 2 - 1
5 TERMINALS ~ SOLDER LUG TYPE
FINISH ~ SMOOTH GREY ENAMEL (TMC SPEC S-115)
CASE ~ STEEL

NOTICE TO PERSONS RECEIVING THIS DRAWING

THE TECHNICAL MATERIEL CORPORATION claims proprietary right in the material disclosed herein. This drawing is issued in confidence and containing information only and may not be reproduced or used to manufacture any thing shown hereon without permission from THE TECHNICAL MATERIEL CORPORATION to the user. This drawing is loaned for mutual assistance and is subject to recall at any time.

Property of:

THE TECHNICAL MATERIEL CORPORATION
MAMARONECK, NEW YORK

TYPE H7

CASE TYPE RCOF

REQ.	ITEM	PART NO.	O. POSE	DESCRIPTION	SYMBOL
				THE TECHNICAL MATERIEL CORP., MAMARONECK, NEW YORK	
				TRANSFORMER, OUTPUT R.F. (PHASE SPLITTING)	
				MATERIAL	
				TYPE & TEMPER	
				HEAT TREAT. SPEC.	
				DRAWN	
				CHECKED	
				FINAL APPROVAL	
				FINISH & SPEC. NO.	
				ELEC. DES. APP.	
				MECH. DES. APP.	
				TZ-101	

SYM	DESCRIPTION	DATE	CH. NO.	DRAFTS	CHECKER	ENG. APP.
Ø	ORIGINAL RELEASE	8/7/69				
UNLESS OTHERWISE SPECIFIED:		SCALE: 5-401-29				
DIMENSIONS ARE IN INCHES		MAXIMUM ALLOWABLE TOLERANCES HAVE BEEN DETERMINED AND ANY DEVIATIONS WILL BE CAUSE FOR REJECTION.				
TOLERANCES ON FRACTIONS ± 1/64		REMOVE ALL BURRS AND SHARP EDGES				
DECIMALS ± .005						
ANGLES ± 1/2°						

REQ. PER UNIT	MODEL	SECTION	ASS'Y. NO.	DATE
1	LFA-3			4-10-62
USED ON				