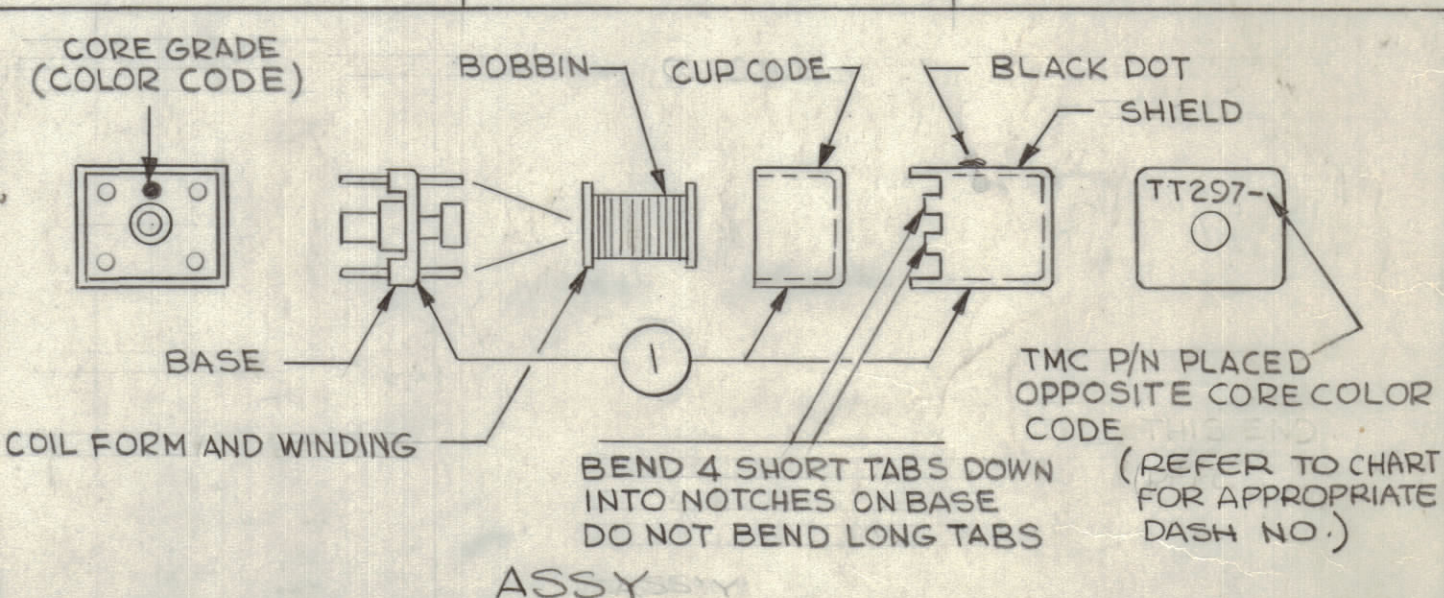
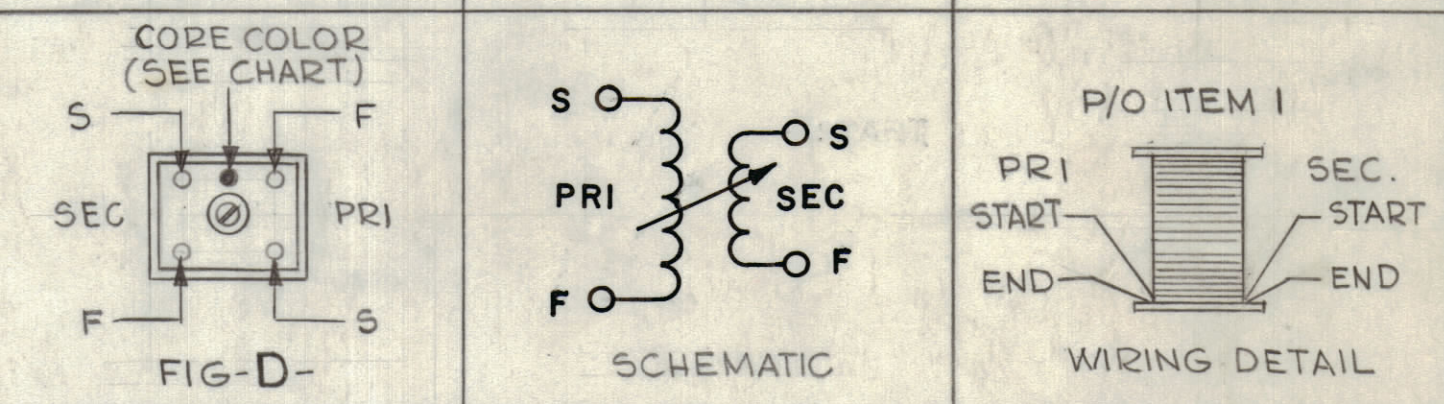
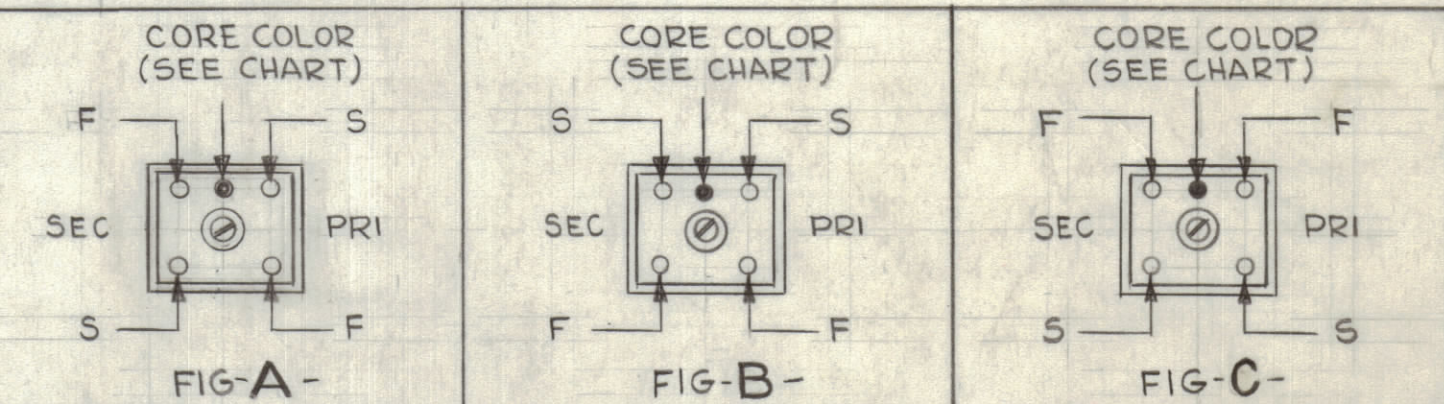


TMC P/N	PRIMARY		SECONDARY		ITEM 4 CORE 1	FIG	CORE COLOR
	ITEM 2 WIRE ELECT	TURNS	ITEM 3 WIRE ELECT	TURNS			
TT297-1	W1104-743SCQS	63	W1104-743SCQS	6	C1136-9	A	RED
-2		63		22-1/2		B	
-3		63		8		A	
-4		63		31-1/2		B	
-5		44		6		A	
-6		44		18		A	
-7		44		6-1/2		B	
-8		44		21		A	
-9		30		4-1/2		B	
-10		30		12		A	
-11		24		4-1/2		B	
-12		24		10		A	
-13		20		3-1/2		B	
-14		20		9		A	
-15		20		3-1/2		B	
-16		20		8		A	
-17		17-1/2		3-1/2		D	
-18		17-1/2		16	C1136-9	C	RED
-19		16-1/2		3	C1136-4	C	YEL
-20	W1104-743SCQS	16-1/2	W1104-743SCQS	14-1/2		D	
-21	W1141-26	14-1/2	W1141-26	3		C	
-22		14-1/2		14-1/2		D	
-23		13-1/2		3		C	
-24		13-1/2		11		C	
-25		13		2-1/2		B	
-26		13		9		A	
-27		12		2-1/2		B	
-28	W1141-26	12	W1141-26	9	C1136-4	A	YEL

Q TESTS					
FREQ	CAP	Q MIN	FREQ	CAP	Q MIN
1.6	200	120	2.0	200	90
1.6	200	110	2.0	200	80
2.0	200	85	2.5	200	75
2.0	200	70	2.5	200	60
2.5	200	90	3.0	200	70
2.5	200	90	3.0	200	70
3.0	180	75	4.0	150	60
3.0	180	70	4.0	150	55
4.0	150	110	5.0	150	80
4.0	150	100	5.0	150	75
5.0	150	130	6.0	150	90
5.0	150	120	6.0	150	85
6.0	150	120	7.0	150	80
6.0	150	115	7.0	150	80
7.0	130	95	8.0	130	80
7.0	130	85	8.0	130	70
8.0	110	130	10.0	110	80
8.0	110	90	10.0	110	65
10.0	91	115	12.0	91	75
10.0	91	95	12.0	91	70
12.0	82	95	15.0	82	80
12.0	82	100	15.0	82	80
15.0	68	90	18.0	68	80
15.0	68	100	18.0	68	75
18.0	56	100	21.0	56	85
18.0	56	75	21.0	56	70
21.0	51	85	26.0	51	95
21.0	51	85	26.0	51	90

REVISIONS						
ZONE	LTR	DESCRIPTION	DATE	E.M.N.NO	DRAFT	CHKD APPD
	X	EXPERIMENTAL RELEASE	7/3/68	X	C.V.	SG JSD
	XI	REVISED AND UPDATED	9/9/68	XI	C.V.	JSD
	Ø	ORIGINAL RELEASE FOR PROD	7/5/69	Ø	CV	JSD



- FABRICATION PROCEDURE**
- WIND PRIMARY (L1) ON BOBBIN (SEE CHART) AND SECURE WITH GL103 (ITEM 4).
  - WIND SECONDARY (L2) ON TOP OF PRIMARY (L1) AND SECURE WITH GL103 (ITEM 4).  
CAUTION: A. L2 WINDING MUST BE WOUND IN THE SAME DIRECTION AS (L1).  
B. LEADS OF (L2) ARE TO BREAKOUT FROM OPPOSITE SIDE OF (L1).
  - BAKE COIL FOR 15 MINUTES AT 150°F. REMOVE FROM OVEN AND COAT WITH GL102 (ITEM 5).
  - PLACE BOBBIN ON CORE BASE AND ROTATE FOR CORRECT POSITIONING. GLUE BOBBIN TO BASE WITH GL129 (ITEM 6).
  - CONNECT LEADS ACCORDING TO SCHEMATIC AND SOLDER.
  - SECURE CUP CORE TO BASE WITH GL129 (ITEM 6) ASSEMBLE AS SHOWN.  
CAUTION: GL129 (ITEM 6) MUST NOT TOUCH THE BOBBIN, WINDING OR CORE
  - MARK TMC P/N ON TOP OF CASE AS SHOWN (BLACK GOTHIC)  
NOTE: TMC P/N MUST BE IN ALIGNMENT WITH CORE COLOR CODE (SEE DETAIL)  
PLACE BLACK DOT ON SIDE OF CAN CORRESPONDING TO BASE COLOR CODE.
  - TEST "Q" UNLOADED (SEE CHART).

NOTE: ODD NUMBERED TRANSFORMERS ARE TO BE USED AS ANTENNA TRANSFORMERS.  
EVEN NUMBERED TRANSFORMERS ARE TO BE USED AS RF AMPLIFIER TRANSFORMERS.

MTR-( )150		
QTY / UNIT	MODEL USED ON	ASS'Y NO.
APPLICATION		
5401-451	CODE	5401 SA01-451

NOTICE TO PERSONS RECEIVING THIS DRAWING  
THE TECHNICAL MATERIEL CORPORATION claims proprietary right in the material disclosed hereon. This drawing is issued in confidence for engineering information only and may not be reproduced or used to manufacture anything shown hereon without permission from THE TECHNICAL MATERIEL CORPORATION to the user. This drawing is loaned for mutual assistance and is subject to recall at any time.

QTY. REQ.	ITEM	PART NO.	DESCRIPTION	SYMBOL
X	7	BS100	SOLDER, TIN ALLOY	
X	6	GL129	ADHESIVE, EASTMAN 910	
X	5	GL102	ADHESIVE, Q-MAX	
X	4	GL103	ADHESIVE, N-CEL	
X	3	SEE CHART	WIRE, ELECT	
X	2	SEE CHART	WIRE, ELECT	
X	1	C1136-SEE CHART	CORE, ADJUSTABLE, TUNING	

O. POSE		DATE		DATE	
FINAL APPROVAL	<i>[Signature]</i>	7/15/69			
MECH. DES.					
ELECT. DES.	<i>[Signature]</i>	7/15/69			
CHECKED	<i>[Signature]</i>	8/16/68			
DRAWN	G.D.L	7-5-68			

LIST OF MATERIAL			
THE TECHNICAL MATERIEL CORP. MAMARONECK, NEW YORK			
TRANSFORMER, RF ADJUSTABLE LPR-1			
SIZE	CODE IDENT.NO.	DWG NO.	ISSUE
C	82679	TT 297	Ø
SCALE DO NOT SCALE		SHEET	OF