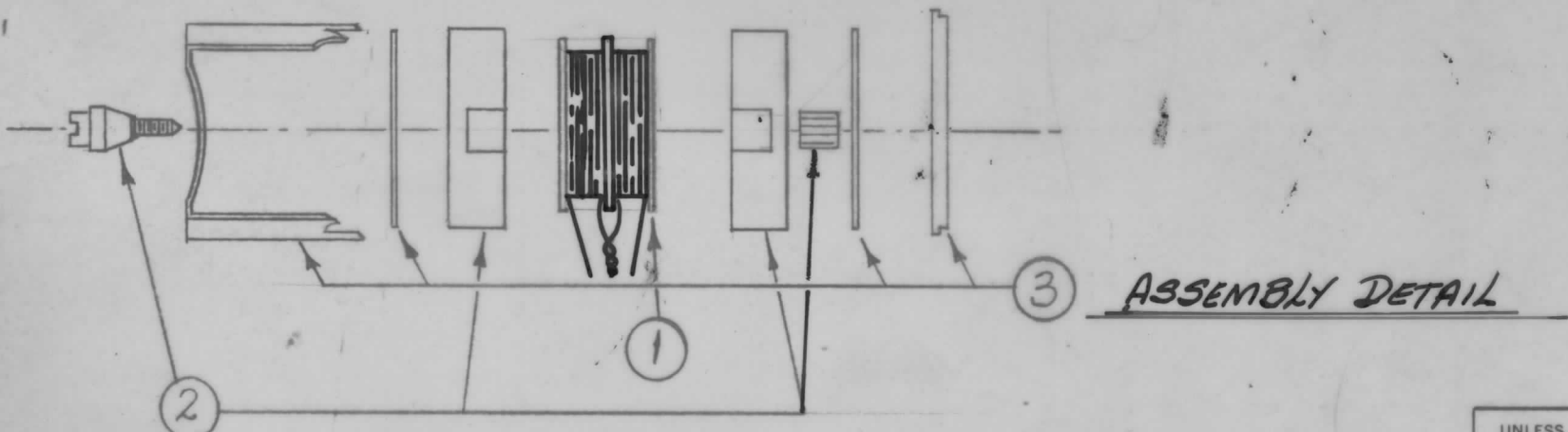
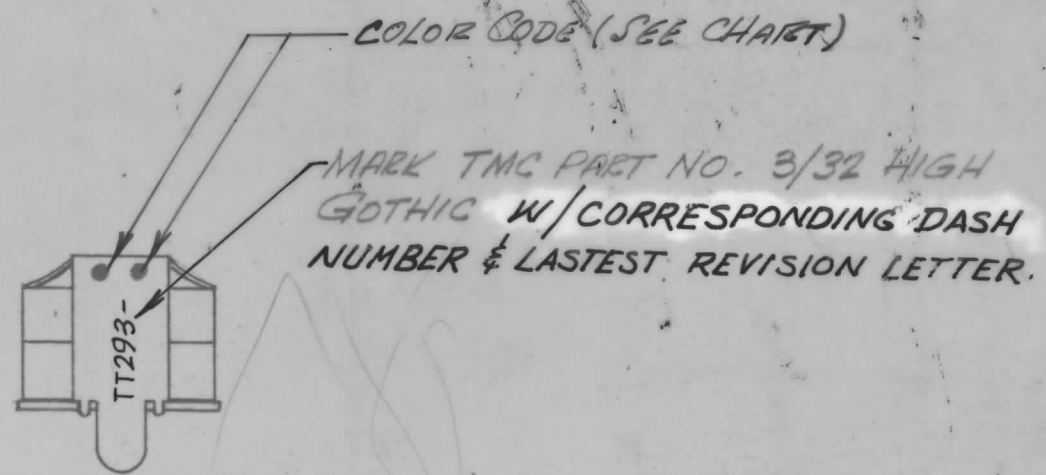
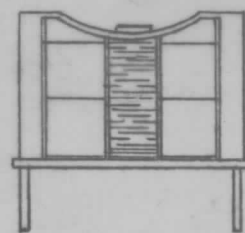


TMC PART NO.	SYMBOL	No. OF. TURNS	TEST FREQUENCY						DISTR. CAP.	COLOR CODE	BAND	REQ.
			$L_1 \pm 1\%$									
			L1	F	L			Q				
				SET	MIN	MAX						
TT293-1	T4	40 CT	100 KC	263.8 $\mu$ H	245.5	270	310	0.218	10.6 pF	—	100 KC	1

REVISIONS						
ZONE	LTR	DESCRIPTION	DATE	E.M.N.NO	DRAFT	CHKD APPD
	X	EXP. RELEASE	10-9-67	-	HLL	APB
	Ø	ORIG. RELEASE FOR PROD	1-8-68	Ø	R.G.	JLD

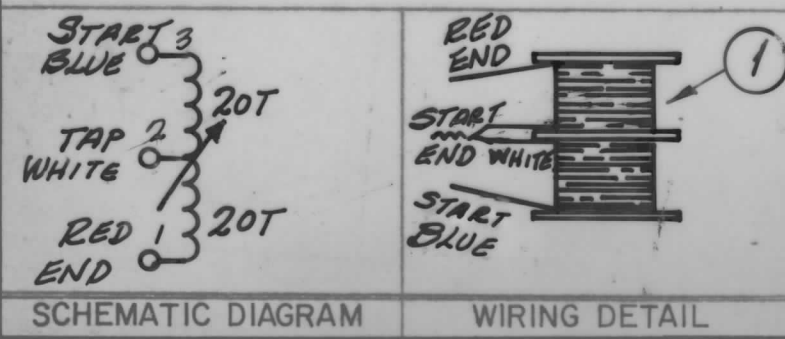
WINDING PROCEDURE

1. WIND REQ. TURNS (SEE CHART) OF ITEM 4 ON ITEM 1 STAKE WITH ITEM 6.
2. KEEP ALL LEADS 1-1/2" LONG.
3. STRIP AND TIN ALL LEADS TO WITHIN 3/4" OF COIL.
4. COLOR CODE ALL LEADS AS SHOWN IN WIRING DETAIL.
5. BAKE COIL FOR 15 MINUTES AT 150° F. REMOVE FROM OVEN AND COAT WITH ITEM 5.
6. ASSEMBLE ITEMS 1, 2, 3 AS PER ASSEMBLY DETAIL SHOWN.
7. BEND THE 4 SMALL TABS DOWN, TOWARD CENTER OF COIL.
8. STAMP TMC P/N AS SHOWN. (SEE CHART)
9. TEST INDUCTANCE AND "Q" AS SHOWN. SET INDUCTANCE FIRST.
10. BAKE COMPLETE ASSEMBLY FOR 1 HOUR AT 212° F.
11. REMOVE COMPLETED ASSEMBLY FROM OVEN AND ALLOW TO COOL TO ROOM TEMPERATURE.
12. REPEAT STEP # 9.
13. TUNE THE CORE INTO THE COIL TO REACH THE INDUCTANCE AS SHOWN.
14. TEST COIL WITH "Q" METER TYPE 260A
15. WAX CORE IN PLACE AFTER SETTING.



REQ'D	ITEM	PART NUMBER	DESCRIPTION	SYM.
X	7	BS100	SOLDER, TIN ALLOY	
X	6	GL103	ADHESIVE - N-CEL	
X	5	GL130	ADHESIVE - Q-DOPE	
X	4	WI104-4044-SNGS	WIRE, ELEC, LTZ	
1	3	CU158-2	RETAINER, CUP CORE	
1	2	CI197-11	CORE, ADJ TUNING (WHITE)	
1	1	CF135-11	FORM, COIL (BOBBIN TYPE)	

MARTINENGO		LIST OF MATERIAL	
THE TECHNICAL MATERIEL CORP. MAMARONECK, NEW YORK			
TRANSFORMER, Q MULTIPLIER			
SIZE	CODE IDENT. NO.	DWG NO.	ISSUE
B	82679	TT293	Ø
SCALE	SHEET		OF
	1		



1	VLRC-1	ASS'Y NO.
QTY / UNIT	MODEL USED ON	
APPLICATION		
CODE	3401-451	
NOTICE TO PERSONS RECEIVING THIS DRAWING		
THE TECHNICAL MATERIEL CORPORATION claims proprietary right in the material disclosed hereon. This drawing is issued in confidence for engineering information only and may not be reproduced or used to manufacture anything shown hereon without permission from THE TECHNICAL MATERIEL CORPORATION to the user. This drawing is loaned for mutual assistance and is subject to recall at any time.		

UNLESS OTHERWISE SPECIFIED DIMENSIONS ARE IN INCHES AND INCLUDE CHEMICALLY APPLIED OR PLATED FINISHES		FINAL APPROVAL	DATE
		MECH. DES.	DATE
		ELECT. DES.	DATE
		CHECKED	DATE
		DRAWN	DATE
MATERIAL			
FINISH			