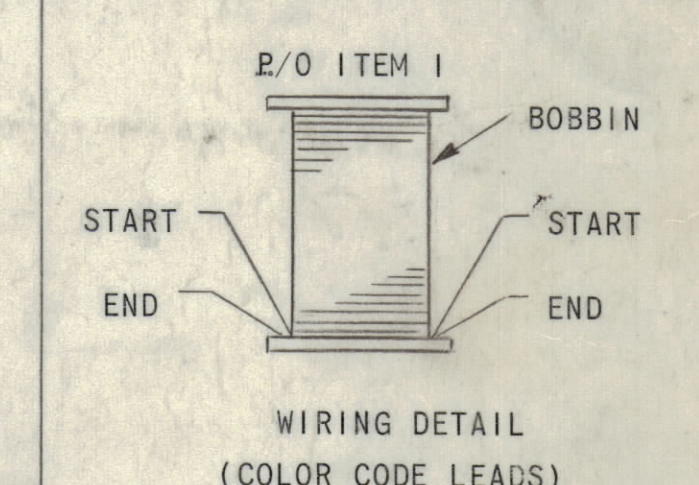
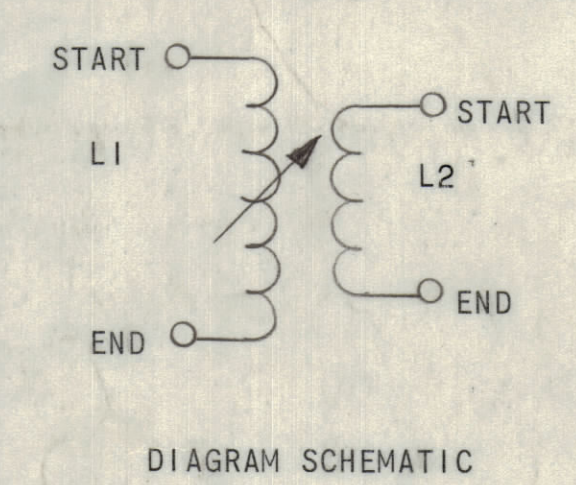
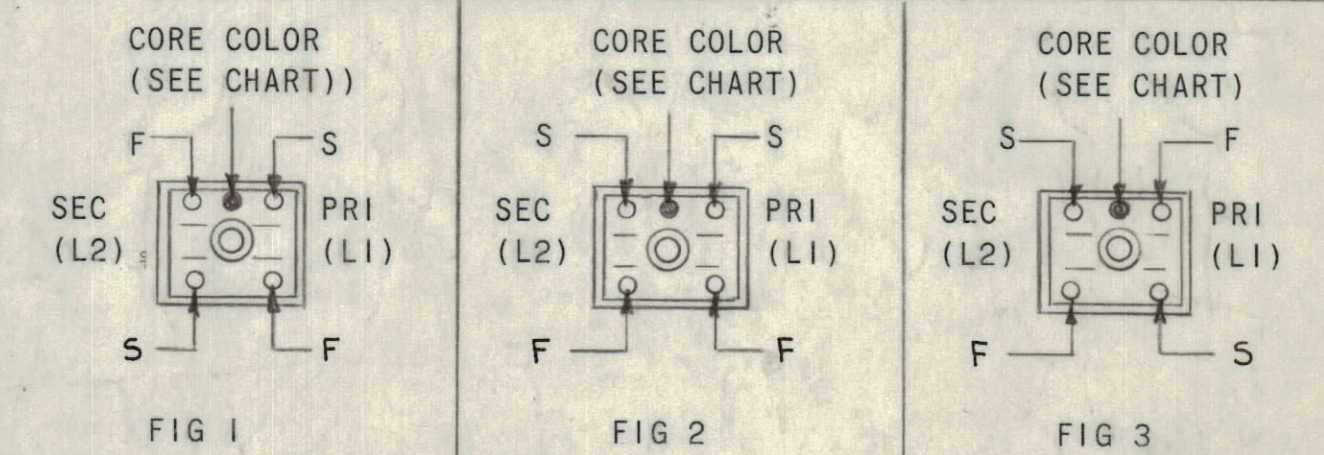


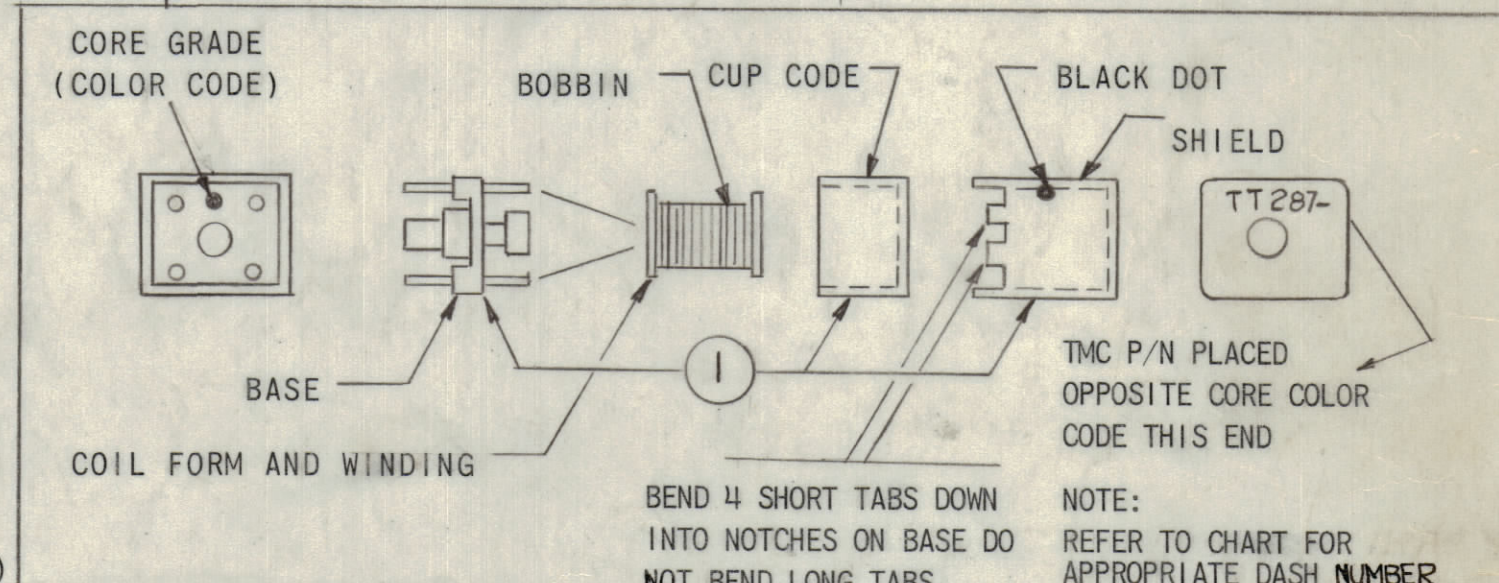
WIRING DATA								TEST DATA									
TMC P/N	PRIMARY (L1)		SECONDARY (L2)		CORE ITEM 1	CORE COLOR	TERM FIG NO	OPER FREQ (MHZ)	TEST FREQUENCY			"L"		"Q" MIN	SEC LOAD RES (OHMS)		
	ITEM 2	TURNS	ITEM 3	TURNS					L MAX (MHZ)	L NOM MIN (MHZ)	L NOM (MHZ)	MAX UH APPROX	MIN UH APPROX			NOM UH	
TT287-1	W1104-1243-SCQ5	18	W1141-32-9(SP)	9	C1136-6	YELLOW	1	14	7.9	7.9	7.9	3.3	1.30	2.45	75	-	-
-2	W1141-26	8-3/4		1-3/4			3	14	25	25	25	.90	.38	.72	65	25	100
-3	W1104-1243-SCQ5	9		2			1	13	7.9	25	25	1.08	.49	.99	70	48	470
-4		9		5			1	13	7.9	25	25	1.08	.49	.99	70	-	-
-5		9		1-3/4			2	13		25	25	1.08	.49	.99	70	42	270
-6		20		10			1	13	7.9	7.9		4.1	1.60	3.20	70	-	-
-7		22		11			1	12	7.9			5.2	2.00	3.25	60	-	-
-8		15		2			1	12	2.5			2.35	.92	1.75	80	25	100
-9		17		3			1	10.95	7.9			2.9	1.15	1.90	75	27	220
-10		17		9			1	10.95				2.9	1.11	1.90	70	-	-
-11		26		13			1	10.95				7.6	2.90	5.35	47	-	-
-12		17		4			1	10.95	7.9			2.95	1.15	1.90	70	29	470
-13		12		2-3/4			2	12		25		1.64	.690	1.45	85	45	470
-14		12		6			1	12	2.5			1.64	.690	1.45	80	-	-
-15		12		2			1	12	2.5			1.64	.690	1.45	85	42	270
-16	W104-1243-SCQ5	22		11			1	12	7.9	7.9	7.9	5.2	2.0	4.30	65	-	-
-17	W1141-26	7		4			1	13	25	25	25	.65	.295	.595	80	-	-
TT287-18	W1141-26	7	W1141-32-9(SP)	1	C1136-6	YELLOW	1	13	25	25	25	.65	.295	.595	85	67	470
-19	W1104-1243-SCQ5	9	W1141-32-9 (SP)	3	C1136-6	YELLOW	1	13	7.9	25	25	1.08	.5	.95	65	-	-
-20	W1104-1243-SCQ5	20	W1141-32-9 (SP)	5	C1136-6	YELLOW	1	13	7.9	7.9	7.9	4.1	1.6	3.2	60	-	-
-21	W1104-1243-SCQ5	24	W1141-32-9 (SP)	6	C1136-6	YELLOW	1	12	7.9	7.9	7.9	6.2	2.4	4.5	50	-	-

REVISIONS						
ZONE	LTR	DESCRIPTION	DATE	E.M.N.NO	DRAFT	CHKD APPD
	X	EXPERIMENTAL RELEASE	3-27-67	X	GDL	
	X ₁	ADDED -19	6-12-67	X ₁	CV	
	X ₂	ADDED -20, -21	7-11-67	X ₂	CV	
	Ø	ORIG RELEASE FOR PROD.	8-1-67	Ø	RG	



FABRICATION PROCEDURE

- WIND PRIMARY (L1) ON BOBBIN (SEE CHART) AND SECURE WITH GL103 (ITEM 4)
- WIND SECONDARY (L2) ON TOP OF PRIMARY (L1) AND SECURE WITH GL103 (ITEM 4)
CAUTION: (A) L2 WINDING MUST BE WOUND IN THE SAME DIRECTION AS (L1)
(B) LEADS OF (L2) ARE TO BREAKOUT FROM OPPOSITE SIDE OF (L1)
- BAKE COIL FOR 15 MINUTES AT 150° F. REMOVE FROM OVEN AND COAT WITH GL102 (ITEM 5)
- PLACE BOBBIN ON CORE BASE AND ROTATE FOR CORRECT POSITIONING. GLUE BOBBIN TO BASE WITH GL129 (ITEM 6)
- CONNECT LEADS ACCORDING TO SCHEMATIC AND SOLDER
- SECURE CUP CORE TO BASE WITH GL129 (ITEM 6) ASSEMBLE AS SHOWN
CAUTION: GL129 (ITEM 6) MUST NOT TOUCH THE BOBBIN, WINDING OR CORE.
- MARK TMC P/N ON TOP OF CASE AS SHOWN (BLACK GOTHIC)
NOTE: TMC P/N MUST BE IN ALIGNMENT WITH CORE COLOR CODE (SEE DETAIL)
PLACE BLACK DOT ON SIDE OF CAN CORRESPONDING TO BASE COLOR CODE
- TEST "L" MAX AND "L" MIN ADJUST CORE FOR "L" NOM AND TEST "Q" UNLOADED (SEE CHART)
- TEST "Q" LOADED AT OPERATING FREQUENCY ONLY (SEE CHART)



QTY. REQ.	ITEM	PART NO.	DESCRIPTION	SYMBOL
X	7	BS100	SOLDER, TIN ALLOY	
X	6	GL129	ADHESIVE, EASTMAN Ø10	
X	5	GL102	ADHESIVE, Q-MAX	
X	4	GL103	ADHESIVE, N-CEL	
X	3	SEE CHART	WIRE, ELECT	
X	2	SEE CHART	WIRE, ELECT	
X	1	C1136-SEE CHART	CORE, ADJUSTABLE, TUNING	

0 POSE LIST OF MATERIAL

UNLESS OTHERWISE SPECIFIED DIMENSIONS ARE IN INCHES AND INCLUDE CHEMICALLY APPLIED OR PLATED FINISHES

TOLERANCES ON
 DECIMALS: .X ± .05, .XX ± .01, .XXX ± .005
 FRACTIONS: ± 1/64, ANGLES ± 0° -30'

FINAL APPROVAL: [Signature] DATE: 8-2-67
 MECH. DES. DATE:
 ELECT. DES. DATE: 8-1-67
 CHECKED: [Signature] DATE: 3-27-67
 DRAWN: G.D.L. DATE: 3-25-67

THE TECHNICAL MATERIEL CORP.
MAMARONECK, NEW YORK

TRANSFORMER, TUNED, RF

MATERIAL: [Signature] DATE: 8/1/67

SIZE: C CODE IDENT. NO: 82679 DWG. NO: TT287 ISSUE: Ø

SCALE: SHEET: OF:

MMX- ()

QTY / UNIT MODEL USED ON ASS'Y NO.

APPLICATION

5401-451 CODE 5401 - 5401 -

NOTICE TO PERSONS RECEIVING THIS DRAWING
 THE TECHNICAL MATERIEL CORPORATION claims proprietary right in the material disclosed herein. This drawing is issued in confidence for engineering information only and may not be reproduced or used to manufacture anything shown herein without permission from THE TECHNICAL MATERIEL CORPORATION to the user. This drawing is loaned for mutual assistance and is subject to recall at any time.