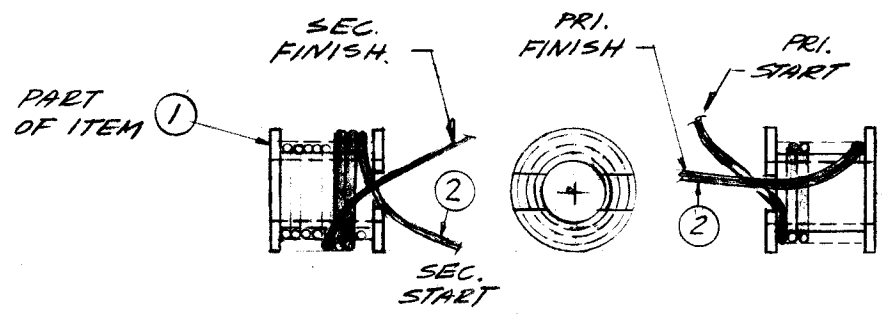
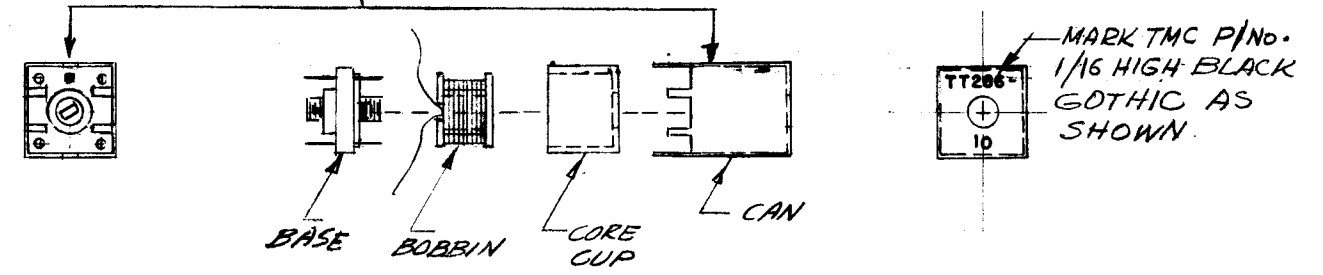


REVISIONS						
SYM	DESCRIPTION	DATE	E.M.N. NO.	DRAFT	CHKD	APPD
X	EXP. RELEASE	4-5-67				
X1	P/Nos 15 & 16 ADDED	5-1-67		G.D.L		
X2	UPDATED	5-25-67		G.D.L		
Ø	ORIGINAL RELEASE FOR PRODUCTION	8-28-67	Ø	RG		

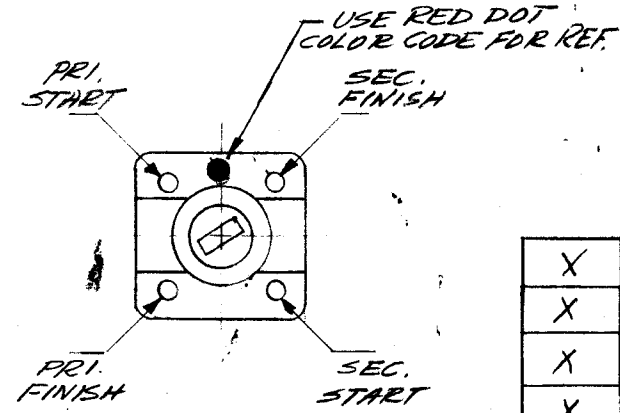
TT 286 -

PART NO.	PRI. TURNS	SEC. TURNS	FLUSH CORE NOM. L OF PRI. IN INCH.	+ TOL IN ALH	WIRE DISTR. C OF PRI.	Q OF PRI.	MIN Q.	AT FREE MC	QTY PER UNIT	OPERATING FREE. MC
1	33	11	10.5	0.5	6.3	79	70	2.4	4	0.8, 0.9, 1.0
2	33	6 3/4	10.5	0.5	6.1	90	70	2.4	3	0.8, 0.9, 1.0
3	27 1/2	9	7.0	0.3	3.2	80	70	3.0	3	1.1, 1.2, 1.3
4	27 1/2	5 1/2	7.0	0.3	3.1	78	70	3.0	3	1.1, 1.2, 1.3
5	23 1/2	8	5.1	0.2	1.9	75	65	3.5	3	1.4, 1.5, 1.6
6	23 1/2	4 1/2	5.1	0.2	1.9	78	70	3.5	3	1.4, 1.5, 1.6
7	21 1/2	7	3.9	0.2	1.4	77	70	4.0	5	1.7, 1.8, 1.9, 3.0, 3.5
8	21 1/2	4 1/4	3.9	0.2	1.4	77	70	4.0	3	1.7, 1.8, 1.9
9	11	3 1/2	1.55	0.08	0.6	79	70	7.0	1	6.0
10	11	2 1/2	1.55	0.08	0.6	79	70	7.0	1	6.0
11	9 1/2	3	1.32	0.06	0.6	75	65	7.5	1	7.0
12	9 1/2	2	1.32	0.06	0.6	75	65	7.5	1	7.0
13	8	2 1/2	0.923	0.05	0.6	72	65	9.0	1	8.0
14	8	1 1/2	0.923	0.05	0.6	72	65	9.0	1	8.0
15	6 1/2	2	0.633	0.02	1.2	80	70	13.0	3	12, 13, 14
16	6 1/2	1 1/2	0.633	0.02	1.0	80	70	13.0	3	12, 13, 14
17										

STAMP BLACK DOT ON SIDE OF CAN CORRESPONDING TO BASE COLOR CODE



WINDING DETAIL



CONNECTION DIAGRAM
BOTTOM VIEW OF BASE

- NOTES
1. WIND PRIMARY TURNS, APPLY ITEM 5 TO HOLD LEADS.
 2. WIND SECONDARY ON TOP OF PRIMARY, APPLY ITEM 5 TO HOLD LEADS.
 3. BAKE IN OVEN FOR 1/2 HR. AT 212°F
 4. APPLY COAT OF ITEM 4 TO WINDING TO HOLD IN PLACE.
 5. STRIP & TIN 4 LEADS TO WITHIN 1/4" FROM COIL
 6. WIRE AS PER CONNECTION DIAGRAM.
 7. ASSEMBLE AS SHOWN.
 8. TEST BEFORE BENDING OVER HOLDING TABS

NOTES

—	VOX-7	—
—	LFE-1	—
—	MMX-()	—
Q'TY./UNIT	MODEL USED ON	ASS'Y. NO.
SCALE	CODE	S401-451, S401-
	A	S401-

THE CONTENTS OF THIS DRAWING ARE THE EXCLUSIVE PROPERTY OF THE TECHNICAL MATERIEL CORP. ITS UNAUTHORIZED USE OR REPRODUCTION IN WHOLE OR IN PART IS STRICTLY FORBIDDEN.

REQ'D.	ITEM	PART NUMBER	DESCRIPTION	SYMBOL
X	5	GL 103	ADHESIVE - N - CEL	
X	4	GL 102	ADHESIVE - Q - MAX	
X	3	BS 100	SOLDER, TIN ALLOY	
X	2	WI 104.541SNQS	WIRE, ELEC. LITZ	
1	1	CI 136-5	CORE ADJ. TUNNING	RED

O.POSE. LIST OF MATERIAL

MATERIAL		THE TECHNICAL MATERIEL CORP. MAMARONECK, NEW YORK			
FINISH		TITLE TRANSFORMER, RF			
UNLESS OTHERWISE SPECIFIED DIMENSIONS ARE IN INCHES AND INCLUDE CHEMICALLY APPLIED OR PLATED FINISHES		DRAWN	DATE	FINAL APPROVAL	DATE
DECIMALS .X ± .05 .XX ± .01 .XXX ± .005		J. ANGEL	10/17/66	[Signature]	8/23/67
FRACTIONS ± 1/64 ANGLES ± 0° 30'		CHECKED	DATE	TT 286 -	
TOLERANCES		ELECT. DES.	DATE	SHEET	
		Mech. Des.	DATE	REV. LTR.	

M/L Allen 8/28/67