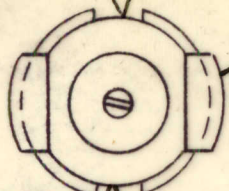


SECONDARY LEADS

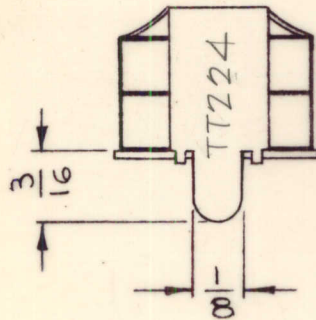
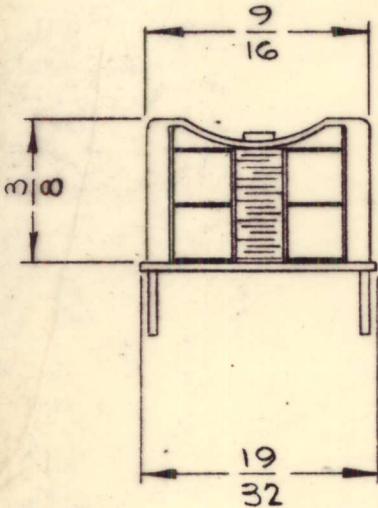
START GREEN
END YELLOW



STAMP TMC PART NO.
3/32 HIGH GOTHIC
W/ LATEST REV. LETTER

PRIMARY LEADS

START BLUE
END RED



REQ. PER UNIT	USED ON			TT224	Ø
	MODEL	ASS'Y. NO.	DATE		
1	LFCA-1	A3719	5-20-65		

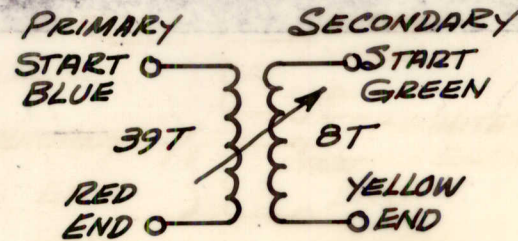
ELECTRICAL SPECS.
(WITH SLUG INSERTED)

OPERATING FREQUENCY:
INDUCTANCE @ 790 KCS
PRIMARY: 250 μ h + ϵ - 5 μ h
SECONDARY: NOT RATED
"Q" (PRIMARY) @ 100KCS: > .520

MECHANICAL SPEC.

TURNS
PRIMARY: 39
SECONDARY: 8
RETAINER, BOTTOM: BRASS CAD PLATED
RETAINER, TOP: NICKEL SILVER H/H

MATERIAL:
CORE & SLUG: POWDERED IRON



SCHEMATIC DIAGRAM

							REQ. ITEM	PART NO.	POSE	DESCRIPTION	SYMBOL	
										THE TECHNICAL MATERIEL CORP. MAMARONECK, NEW YORK		
										TRANSFORMER, RF, ADJUSTABLE		
Ø	ORIGINAL RELEASE FOR PRODUCTION	5/20/65	AA	HLA								
SYM	DESCRIPTION	DATE	CH. NO.	DRAFTS	CHECKER	ENG. APP.	MATERIAL					
UNLESS OTHERWISE SPECIFIED DIMENSIONS ARE IN INCHES AND INCLUDE CHEMICALLY APPLIED OR PLATED FINISHES		SCALE					H. AUSTIN					
		H					TYPE & TEMPER	HEAT TREAT. SPEC.	DRAWN	CHECKED	FINAL APPROVAL	
DECIMALS .X ± .05 .XX ± .01 .XXX ± .005		TOLERANCES		FRACTIONS ± 1/64 ANGLES ± 0° 30'		CODE Δ	2A-3828		99B		TT224	
							FINISH & SPEC. NO.		ELEC. DES. APP.	MECH. DES. APP.		