

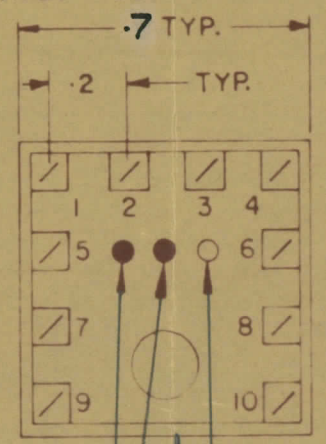
0	REL TO PROD.	MAY 14/68	AD	JW	

TT10007-42A

NOTE:-
 1- COLOUR CODE INDICATES LAST TWO DIGITS AND LETTER IN TMC PART NO.
 2- * -INDICATES POSITION OF NAMEPLATE.

ASSEMBLY INSTRUCTIONS:-

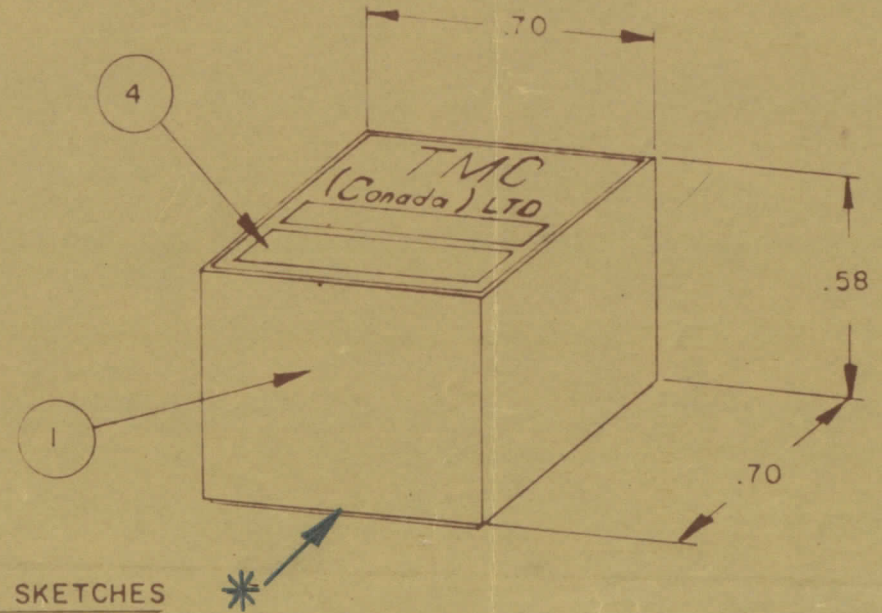
- WIND 10 TURNS OF ITEM 3 AS SHOWN IN SKETCH 1.
- WIND 2 TURNS OF ITEM 3 AS SHOWN IN SKETCH 2.
- WIND _____ TURNS OF ITEM _____ AS SHOWN IN SKETCH 3.
- DIP COIL IN ITEM 5 AND BAKE FOR 1/2 HR. AT 125°F.
- REMOVE 1 TURNS FROM THE PRIMARY IF NECESSARY TO OBTAIN THE FOLLOWING AT TEST FREQ. OF 7.9 MHz.
 - INDUCTANCE IN μH . 1.7 ± 0.1
 - Q MINIMUM 150
- MAXIMUM NUMBER OF TURNS TO BE REMOVED 2
- MOUNT TRANSFORMER ON BASE & CONNECT WIRES TO CORRESPONDING PINS.
- INSTALL ITEM 7 & _____ BETWEEN PINS 10 & 4
- INSTALL ITEM _____ & _____ BETWEEN PINS _____ & _____
- INSTALL ITEM _____ BETWEEN PINS _____ & _____
- POT TRANSFORMER USING ITEM 6 AS PER SPEC. S 10149.
- COLOUR CODE BOTTOM OF TRANSFORMER _____
- INSTALL NAMEPLATE _____



BOTTOM VIEW

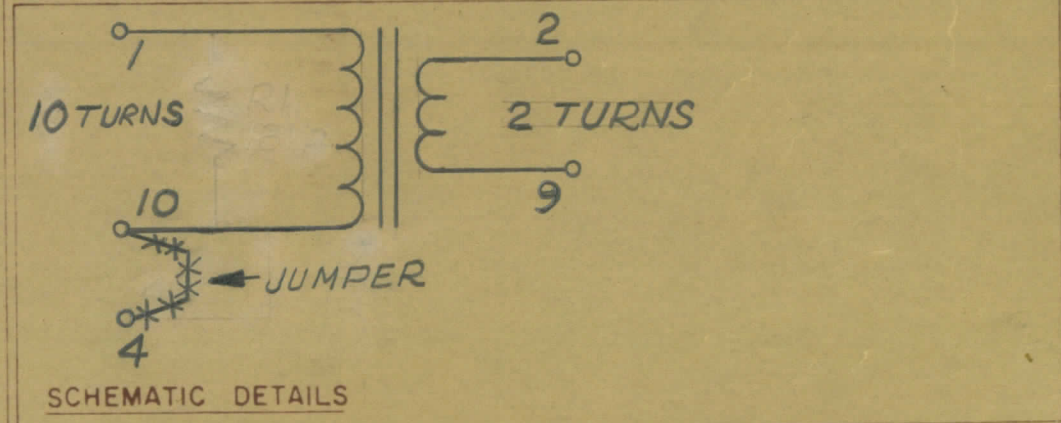
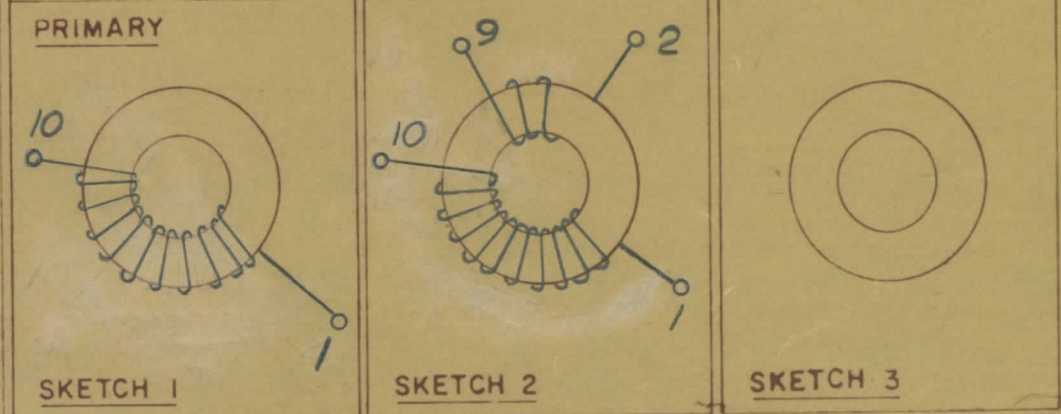
FIRST DIGIT
 SECOND DIGIT
 LETTER (IF REQ'D)
 A - WHITE
 B - BLACK

COLOUR CODE MARKING



TYPICAL FOR ALL SKETCHES

DIRECTION OF WINDING TO BE CLOSELY FOLLOWED AS SHOWN IN SKETCHES. ALL LEADS TO BE 1 INCH LONG. TIN LEADS BACK 3/4 INCH.



TMC (Canada) LIMITED	
TRANSFORMER RF,	
TUNED	
AP	A.S. JW
RPL	
TT10007-42-A	

TTRT-4AE 059/68

MAY 13/68