

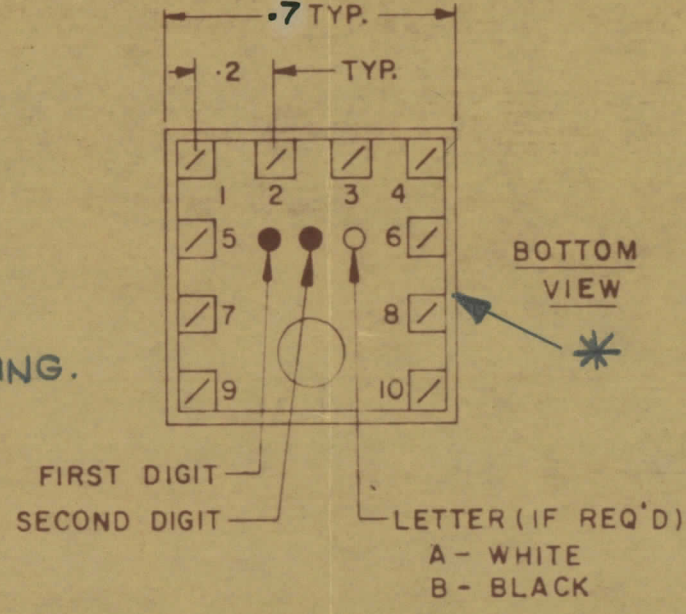
TOLERANCES UNLESS OTHERWISE SPECIFIED		SCALE	
MAXIMUM PERMISSIBLE TOLERANCES HAVE BEEN DETERMINED AND DESIGNATIONS WILL BE MADE FOR POSITION, NUMBER AND MARKING STAMP LEGS		OTHERWISE SPECIFIED	
REV.	DATE	BY	CHKD.
0	MAY 14/68	AD	JW
REL TO PROD			

TT10007-41A

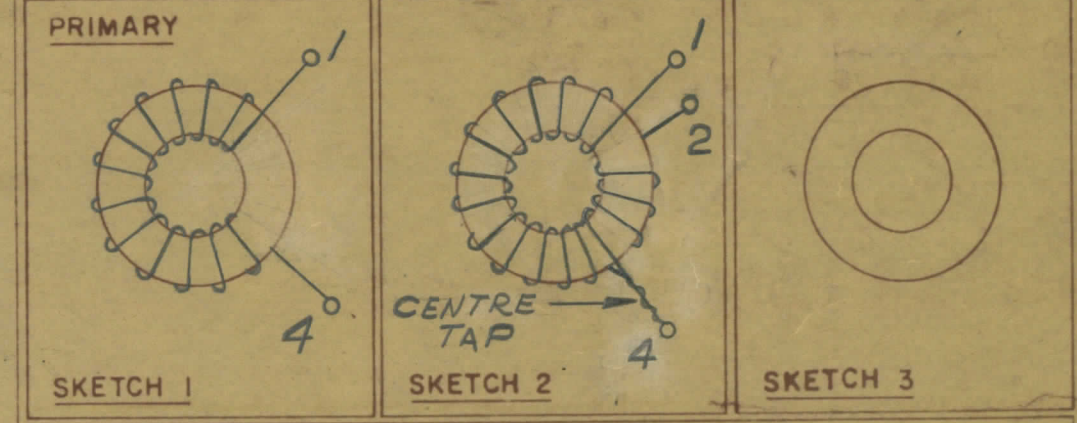
NOTE -  
 1- COLOUR CODE INDICATES LAST TWO DIGITS AND LETTER IN TMC PART NO.  
 2- \* -INDICATES POSITION OF NAMEPLATE.

**ASSEMBLY INSTRUCTIONS:-**

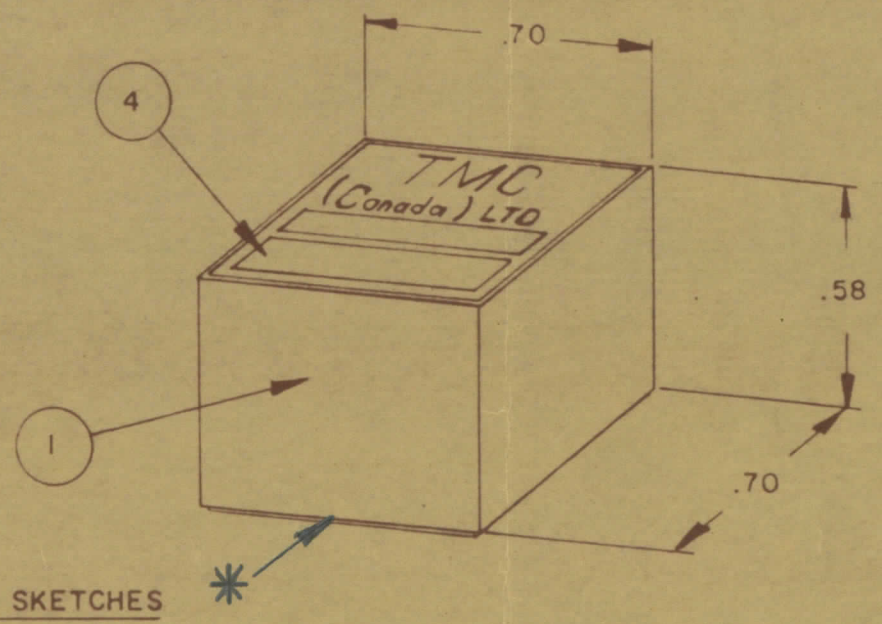
- WIND 15 TURNS OF ITEM 3 AS SHOWN IN SKETCH 1.
- WIND 5 TURNS OF ITEM 3 AS SHOWN IN SKETCH 2.
- WIND \_\_\_\_\_ TURNS OF ITEM \_\_\_\_\_ AS SHOWN IN SKETCH 3.
- DIP COIL IN ITEM 5 AND BAKE FOR 1 1/2 HR. AT 125 OF.
- REMOVE 2 TURNS FROM THE PRIMARY IF NECESSARY TO OBTAIN THE FOLLOWING AT TEST FREQ. OF 7.9 MHz.  
 a) INDUCTANCE IN  $\mu H$ . 1.60 ± 0.1 FOR THE WHOLE WINDING.  
 b) Q MINIMUM NO SPEC.
- MAXIMUM NUMBER OF TURNS TO BE REMOVED 3
- MOUNT TRANSFORMER ON BASE & CONNECT WIRES TO CORRESPONDING PINS.
- INSTALL ITEM 7 & \_\_\_\_\_ BETWEEN PINS 4 & 10.
- INSTALL ITEM \_\_\_\_\_ & \_\_\_\_\_ BETWEEN PINS \_\_\_\_\_ & \_\_\_\_\_.
- INSTALL ITEM \_\_\_\_\_ BETWEEN PINS \_\_\_\_\_ & \_\_\_\_\_.
- POT TRANSFORMER USING ITEM 6 AS PER SPEC. S 10149.
- COLOUR CODE BOTTOM OF TRANSFORMER \_\_\_\_\_, \_\_\_\_\_, \_\_\_\_\_.
- INSTALL NAMEPLATE \_\_\_\_\_.



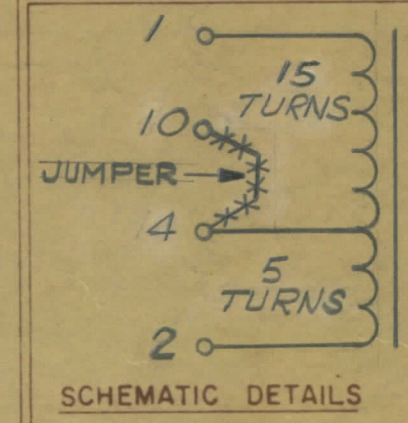
-DIRECTION OF WINDING TO BE CLOSELY FOLLOWED AS SHOWN IN SKETCHES. ALL LEADS TO BE 1 INCH LONG. TIN LEADS BACK 3/4 INCH.



**COLOUR CODE MARKING**



TYPICAL FOR ALL SKETCHES \*



SCHEMATIC DETAILS

**TMC (Canada) LIMITED**  
 OTTAWA ONTARIO

TRANSFORMER RF,  
 TUNED

AP      A.S.  
 RPL      JW

TT10007-41A

TOLERANCES UNLESS OTHERWISE SPECIFIED	SCALE
DRILL DIM. X .05 HOLE DIM. XX .05 OTHERS XXX .005	DRILL DIM. COMMERCIAL STOCK SIZES AND MANUFACTURERS TOLERANCES ARE NOT INCLUDED

TTRT-4AE 059/68

MAY 13/68

TT10007-41A