

IF IT IS FOUND DESIRABLE TO CHANGE ANY TOLERANCE OR OTHER DETAIL SPECIFIED ON THIS DRAWING NOTIFY THE PURCHASER PROMPTLY

MAXIMUM ALLOWABLE TOLERANCES HAVE BEEN DETERMINED AND DEVIATIONS WILL BE CAUSE FOR REJECTION REMOVE ALL BURRS AND SHARP EDGES

DIMENSIONS IN INCHES UNLESS OTHERWISE SPECIFIED

ISSUE	ITEM	CHANGED FROM	DATE	EN NO	DRAFTS	CHECKER	ENG APP
0		REL TO PROD	AUG 26/68		AP		AS

TT10006-45A

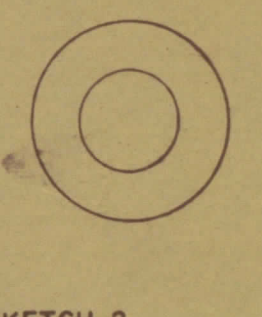
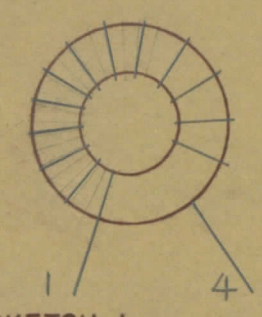
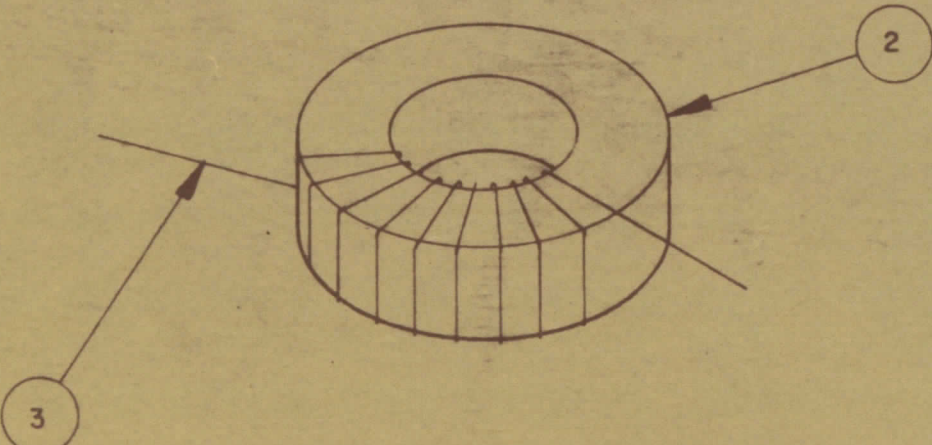
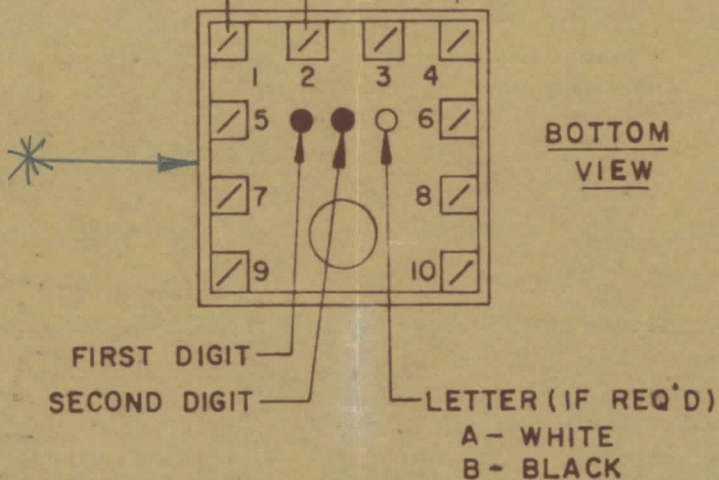
NOTE:-

- 1- COLOUR CODE INDICATES LAST TWO DIGITS AND LETTER IN TMC PART NO.
- 2- * -INDICATES POSITION OF NAMEPLATE.

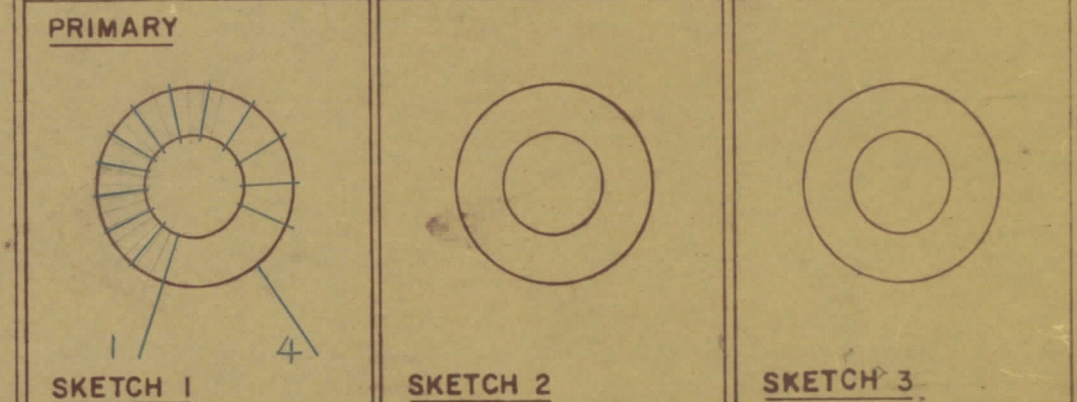
ASSEMBLY INSTRUCTIONS:-

1. WIND 9 TURNS OF ITEM 3 AS SHOWN IN SKETCH 1.
2. WIND _____ TURNS OF ITEM _____ AS SHOWN IN SKETCH 2.
3. WIND _____ TURNS OF ITEM _____ AS SHOWN IN SKETCH 3.
4. DIP COIL IN ITEM 5 AND BAKE FOR _____ HR. AT _____ OF.
5. REMOVE ^{AS MANY} TURNS FROM THE PRIMARY AS NECESSARY TO OBTAIN THE FOLLOWING AT TEST FREQ. OF 7.9 MHz.
 - a) INDUCTANCE IN μH . 1.6 ± 0.1
 - b) Q MINIMUM N.A.
6. MAXIMUM NUMBER OF TURNS TO BE REMOVED N.A.
7. MOUNT TRANSFORMER ON BASE & CONNECT WIRES TO CORRESPONDING PINS.
8. INSTALL ITEM _____ & _____ BETWEEN PINS _____ & _____
9. INSTALL ITEM _____ & _____ BETWEEN PINS _____ & _____
10. INSTALL ITEM _____ BETWEEN PINS _____ & _____
11. POT TRANSFORMER USING ITEM 6 AS PER SPEC. S 10149.
12. COLOUR CODE BOTTOM OF TRANSFORMER _____, _____, _____
13. INSTALL NAMEPLATE.

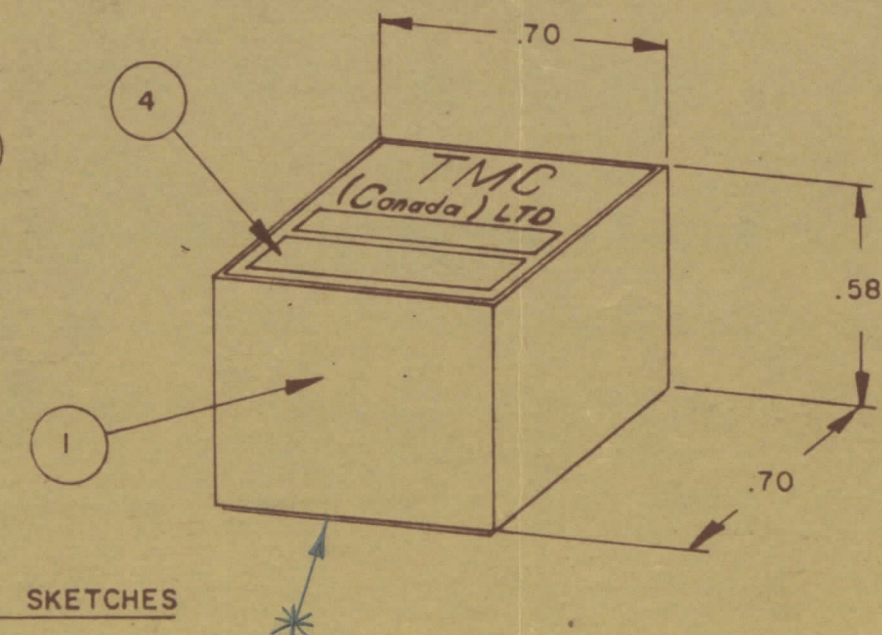
6 TYP.
2 TYR



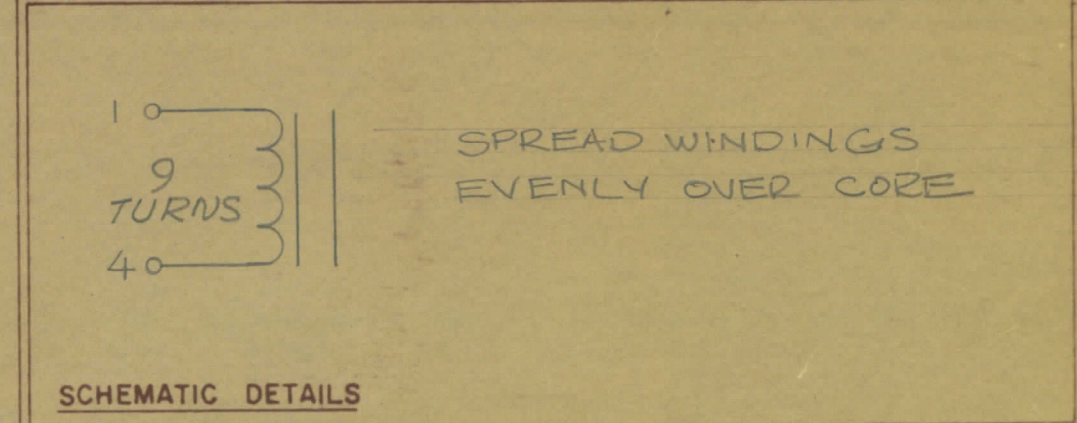
DIRECTION OF WINDING TO BE CLOSELY FOLLOWED AS SHOWN IN SKETCHES. ALL LEADS TO BE 1 INCH LONG. TIN LEADS BACK 3/4 INCH.



COLOUR CODE MARKING



TYPICAL FOR ALL SKETCHES



TOLERANCES UNLESS OTHERWISE SPECIFIED	SCALE
ALL DEC DIM X = .05 FRACTIONAL DIM 1/64 XX = .01 ANGULAR DIM 0°30' XXX = .005	DRILL, PUNCH, COMMERCIAL STOCK SIZES AND MANUFACTURERS TOLERANCES ARE NOT INCLUDED

MODEL	PROJECT NO	DATE
TTRR-4AE	067/68	AUG 14/68

TMC (Canada) LIMITED OTTAWA ONTARIO	
TRANSFORMER RF, TUNED	
DRAWN RPL	CHECKED Sodik
TT10006-45A	