

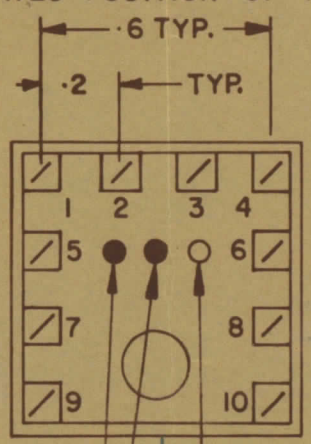
IF IT IS FOUND DESIRABLE TO CHANGE ANY TOLERANCE OR OTHER DETAIL SPECIFIED ON THIS DRAWING NOTIFY THE PURCHASER PROMPTLY		DIMENSIONS IN INCHES UNLESS OTHERWISE SPECIFIED					
MAXIMUM ALLOWABLE TOLERANCES HAVE BEEN DETERMINED AND DEVIATIONS WILL BE CAUSE FOR REJECTION REMOVE ALL BURRS AND SHARP EDGES							
ISSUE	ITEM	CHANGED FROM	DATE	CN NO.	DRAFTS	CHECKER	ENG APP
0		REL TO PROD.	AUG 26/68		AP		

TT10005-41A

**NOTE:-**  
 1- COLOUR CODE INDICATES LAST TWO DIGITS AND LETTER IN TMC PART NO.  
 2- \* -INDICATES POSITION OF NAMEPLATE.

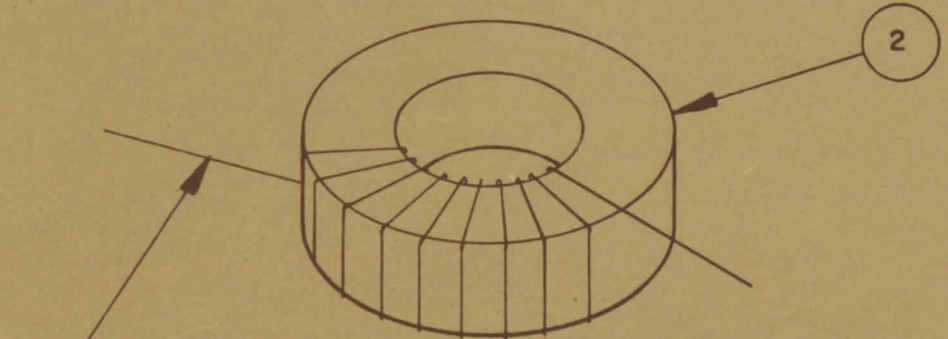
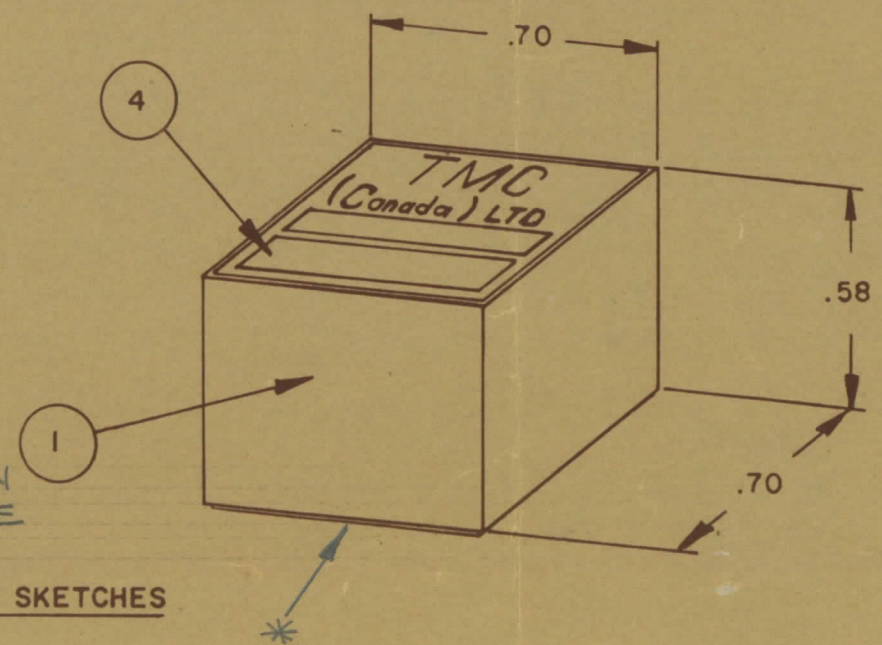
**ASSEMBLY INSTRUCTIONS:-**

- WIND 7 TURNS OF ITEM 3 AS SHOWN IN SKETCH 1. TWIST TAP
- WIND 2 TURNS OF ITEM 3 AS SHOWN IN SKETCH 2.
- WIND \_\_\_\_\_ TURNS OF ITEM \_\_\_\_\_ AS SHOWN IN SKETCH 3.
- DIP COIL IN ITEM 5 AND BAKE FOR 1/2 HR. AT 125°F.
- REMOVE \_\_\_\_\_ TURNS FROM THE PRIMARY IF NECESSARY TO OBTAIN THE FOLLOWING AT TEST FREQ. OF 7.9 MHz.
  - INDUCTANCE OF THE WINDING BETWEEN PINS 9 & 10 -  $1.3 \mu H \pm 0.07$
  - Q MINIMUM
- MAXIMUM NUMBER OF TURNS TO BE REMOVED 2
- MOUNT TRANSFORMER ON BASE & CONNECT WIRES TO CORRESPONDING PINS.
- INSTALL ITEM 7 & 8 BETWEEN PINS 1 & 4.
- INSTALL ITEM 8 & \_\_\_\_\_ BETWEEN PINS 9 & 10.
- INSTALL ITEM \_\_\_\_\_ BETWEEN PINS \_\_\_\_\_ & \_\_\_\_\_.
- POT TRANSFORMER USING ITEM 6 AS PER SPEC. S10149.
- COLOUR CODE BOTTOM OF TRANSFORMER \_\_\_\_\_, \_\_\_\_\_, \_\_\_\_\_.
- INSTALL NAMEPLATE.



FIRST DIGIT  
 SECOND DIGIT  
 LETTER (IF REQ'D)  
 A - WHITE  
 B - BLACK

**COLOUR CODE MARKING**

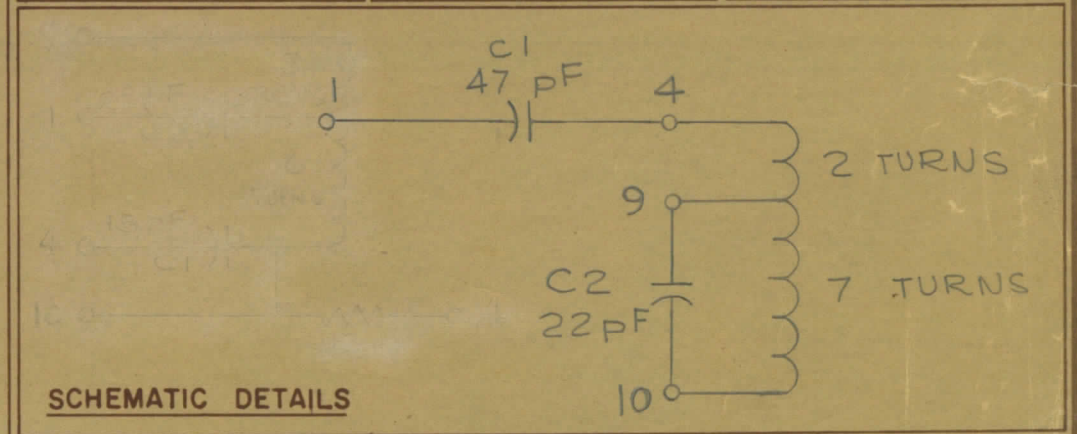
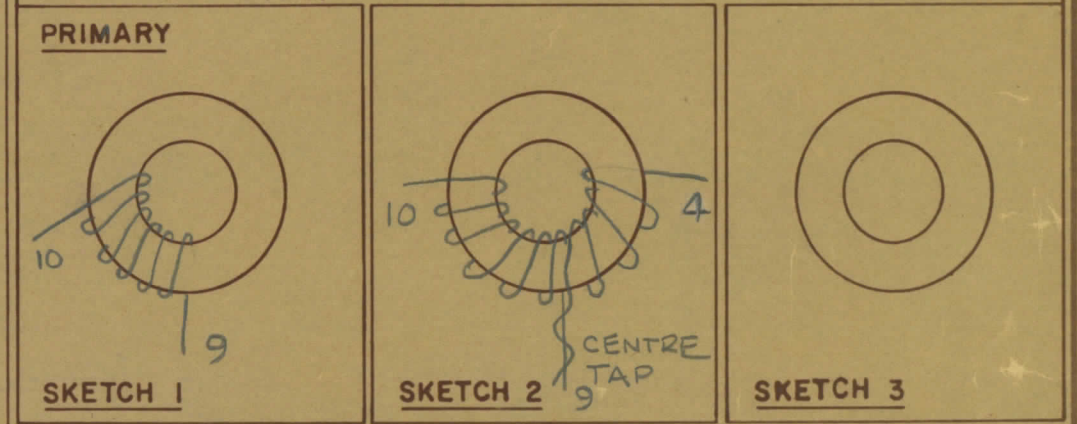


(1) WIND WHOLE WINDING IN SAME DIRECTION  
 (2) SPREAD WINDING EVENLY OVER CORE

TYPICAL FOR ALL SKETCHES

REQ	ITEM	PART NO	DESCRIPTION	
1	1	BPI0002-1	MODU - CON	
1	2	CI-10011-1-Q2	CORE	
AR	3	WI-123-28	WIRE MAGNET	
1	4	NP 10157	NAMEPLATE	
AR	5	GL 130	Q-DOPE	
AR	6	GL 10005-3110 H	ENCAPSULANT	
1	7	CM111E470JIS	CAPACITOR, FIXED.	C1
1	8	CC10014-2	CAPACITOR, FIXED.	C2
	9			
	10			
	11			
	12			

DIRECTION OF WINDING TO BE CLOSELY FOLLOWED AS SHOWN IN SKETCHES. ALL LEADS TO BE 1 INCH LONG. TIN LEADS BACK 3/4 INCH.



STOCK SIZE		TMC (Canada) LIMITED OTTAWA ONTARIO	
MATERIAL		TRANSFORMER F,	
WEIGHT PER PC		TUNED	
TYPE & TEMPER		RPC	A. J. [Signature]
HEAT TREAT SPEC		DRAWN	ELEC DES APP
FINISH & SPEC NO		CHECKED	MECH DES APP
		FINAL APPROVAL	
		TT10005-41A	

TOLERANCES UNLESS OTHERWISE SPECIFIED	SCALE
ALL OTHERS	
DEC DIM	X = .05
FRAC DIM	XX = .01
ANGULAR DIM	XXX = .005
	DRILL, PUNCH, COMMERCIAL STOCK
	SIZES AND MANUFACTURERS
	TOLERANCES ARE NOT INCLUDED

TTRR( ) E	067/68	MAY 16/68
MODEL	PROJECT NO	ASS Y NO
		DATE
USED ON		



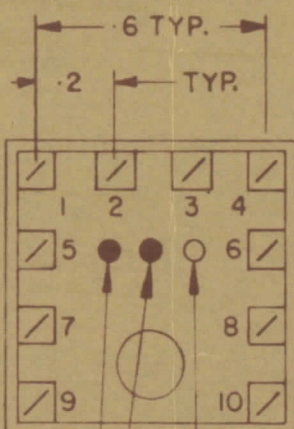
REVISIONS		DATE		DRAWN		CHECKED		ENG. APP.	
Ø	REL TO PROD.	SEPT	10/68	RPL					A.S.
A	REV PER CEMN	13 JAN	69	402	R				

TT10005-41B A

NOTE:-  
 1- COLOUR CODE INDICATES LAST TWO DIGITS AND LETTER IN TMC PART NO.  
 2- \* -INDICATES POSITION OF NAMEPLATE.

**ASSEMBLY INSTRUCTIONS:-**

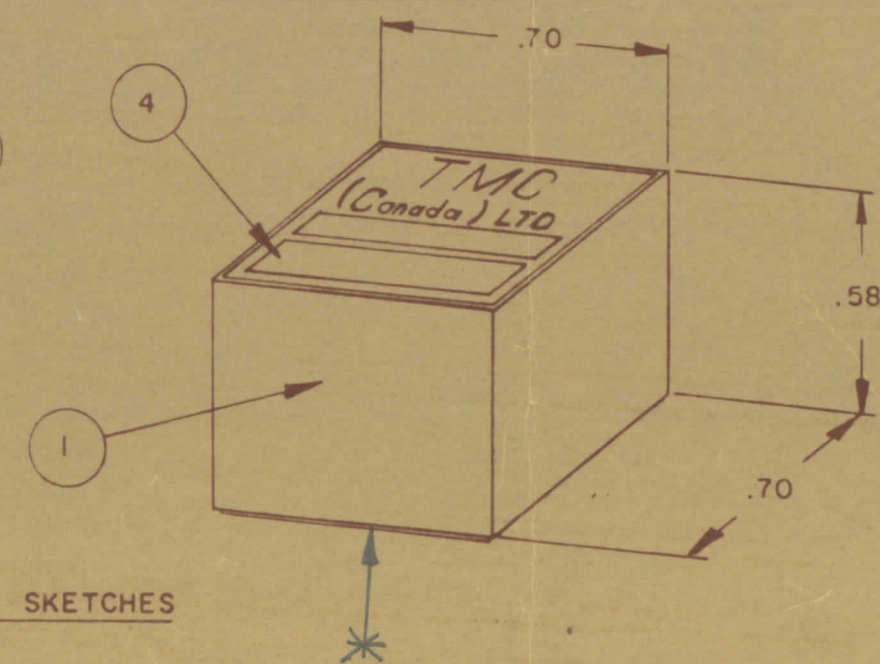
- WIND 6 TURNS OF ITEM 3 AS SHOWN IN SKETCH 1.
- WIND 2 TURNS OF ITEM 3 AS SHOWN IN SKETCH 2.
- WIND \_\_\_\_\_ TURNS OF ITEM \_\_\_\_\_ AS SHOWN IN SKETCH 3.
- DIP COIL IN ITEM 5 AND BAKE FOR 1/2 HR. AT 125°F.
- REMOVE 1 TURNS FROM THE PRIMARY IF NECESSARY TO OBTAIN THE FOLLOWING AT TEST FREQ. OF 25 MHz.
  - INDUCTANCE IN µH. 1.0 ± 0.1 OVER 6 TURNS
  - Q MINIMUM \_\_\_\_\_
- MAXIMUM NUMBER OF TURNS TO BE REMOVED 1
- MOUNT TRANSFORMER ON BASE & CONNECT WIRES TO CORRESPONDING PINS.
- INSTALL ITEM 7 & \_\_\_\_\_ BETWEEN PINS 1 & 4.
- INSTALL ITEM \_\_\_\_\_ & \_\_\_\_\_ BETWEEN PINS \_\_\_\_\_ & \_\_\_\_\_.
- INSTALL ITEM \_\_\_\_\_ BETWEEN PINS \_\_\_\_\_ & \_\_\_\_\_.
- POT TRANSFORMER USING ITEM 6 AS PER SPEC. S10149.
- COLOUR CODE BOTTOM OF TRANSFORMER YEL., BRN., BLK.
- INSTALL NAMEPLATE.



BOTTOM VIEW

FIRST DIGIT  
 SECOND DIGIT  
 LETTER (IF REQ'D)  
 A - WHITE  
 B - BLACK

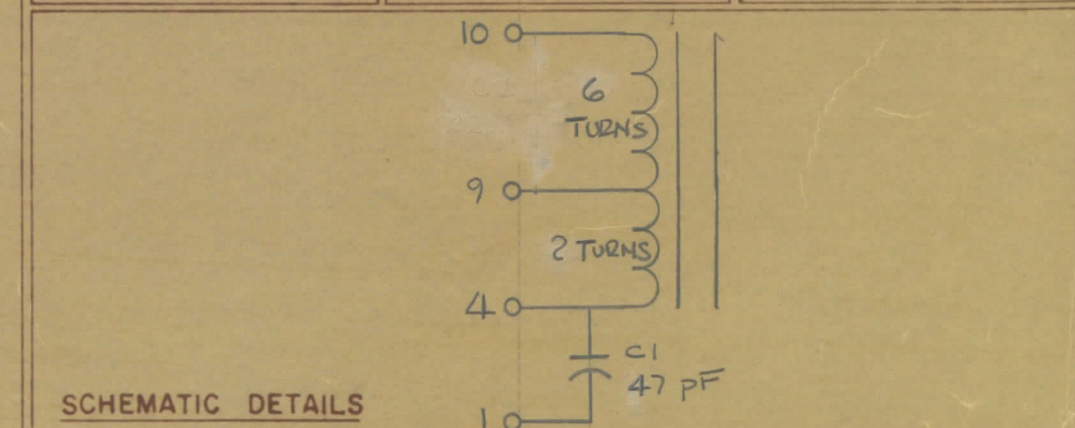
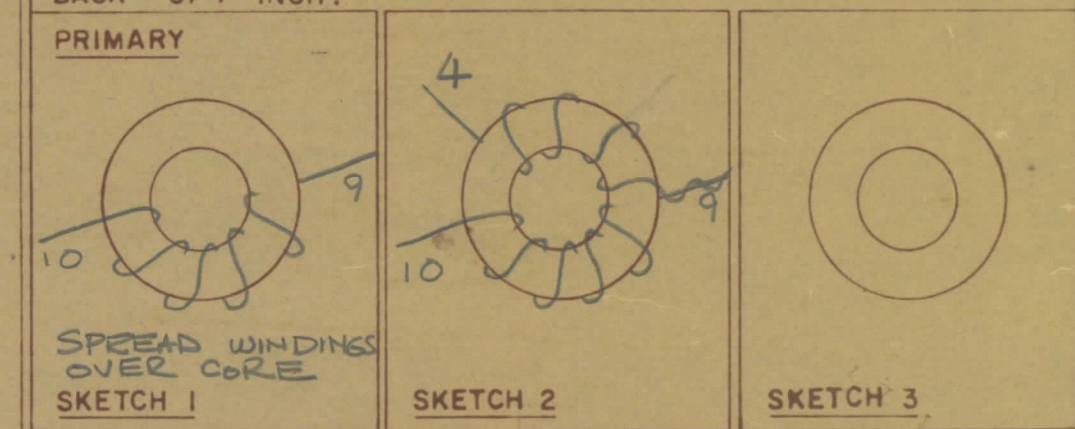
**COLOUR CODE MARKING**



TYPICAL FOR ALL SKETCHES

NO.	QTY.	PART NO.	DESCRIPTION	SYMBOL
1	1	BPI0002-1	MODU - CON	
1	2	CI-10011-1-Q2	CORE	
AR	3	WI-123-28	WIRE MAGNET	
1	4	NP10157	NAMEPLATE	
AR	5	GL130	Q-DOPE	
AR	6	GL10005-3110 H	ENCAPSULANT	
1	7	CM111E470J1S	CAPACITOR, FIXED MICA	CI
1	8			
	9			
	10			
	11			
	12			

DIRECTION OF WINDING TO BE CLOSELY FOLLOWED AS SHOWN IN SKETCHES. ALL LEADS TO BE 1 INCH LONG. TIN LEADS BACK 3/4 INCH.



**TMC (Canada) LIMITED**  
 OTTAWA ONTARIO

TRANSFORMER RF,  
 TUNED

DRW: RPL  
 APP: A.S.  
 DATE: SEPT 10/68

TT10005-41B A

TOLERANCES UNLESS OTHERWISE SPECIFIED		SCALE
DEC DIM	X = .05	DRILL PUNCH COMMERCIAL STOCK SIZES AND MANUFACTURERS TOLERANCES ARE NOT INCLUDED
FRA DIM	XX = .01	
ANGULAR DIM	XXX = .005	

TTRRE-4B	PROJECT NO.	DATE
		SEPT 10/68







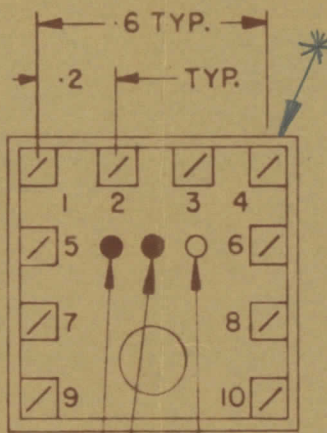
UNLESS OTHERWISE SPECIFIED, ALL DIMENSIONS ARE IN INCHES UNLESS OTHERWISE SPECIFIED.		DIMENSIONS IN INCHES UNLESS OTHERWISE SPECIFIED.				
MAXIMUM ALLOWABLE TOLERANCES HAVE BEEN DETERMINED AND SPECIFICATIONS WILL BE HELD FOR REJECTION, REMOVE ALL BURRS AND SHARP EDGES.		OTHERWISE SPECIFIED.				
REV.	ITEM	CHANGED FROM	DATE	BY	CHECKER	ENG. APP.
0		REL. TO PROD.	SEPT 10/68	RPL		A.S.

TT10005-42B

NOTE:-  
 1- COLOUR CODE INDICATES LAST TWO DIGITS AND LETTER IN TMC PART NO.  
 2- \* -INDICATES POSITION OF NAMEPLATE.

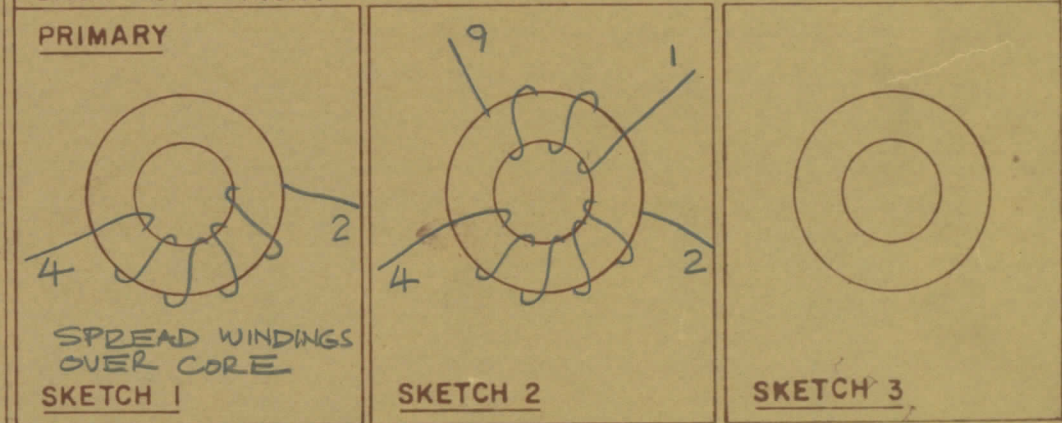
ASSEMBLY INSTRUCTIONS:-

- WIND 10 TURNS OF ITEM 3 AS SHOWN IN SKETCH 1.
- WIND 6 TURNS OF ITEM 3 AS SHOWN IN SKETCH 2.
- WIND \_\_\_\_\_ TURNS OF ITEM \_\_\_\_\_ AS SHOWN IN SKETCH 3.
- DIP COIL IN ITEM 5 AND BAKE FOR 1/2 HR. AT 125°F.
- REMOVE 3 TURNS FROM THE PRIMARY IF NECESSARY TO OBTAIN THE FOLLOWING AT TEST FREQ. OF 25 MHz.  
 a) INDUCTANCE IN  $\mu$ H. 0.6 ± 0.05.  
 b) Q MINIMUM \_\_\_\_\_.
- MAXIMUM NUMBER OF TURNS TO BE REMOVED 3.
- MOUNT TRANSFORMER ON BASE & CONNECT WIRES TO CORRESPONDING PINS.
- INSTALL ITEM 7 & \_\_\_\_\_ BETWEEN PINS 4 & 10.
- INSTALL ITEM 8 BETWEEN PINS \_\_\_\_\_ & \_\_\_\_\_.
- INSTALL ITEM \_\_\_\_\_ BETWEEN PINS \_\_\_\_\_ & \_\_\_\_\_.
- POT TRANSFORMER USING ITEM 6 AS PER SPEC. S10149.
- COLOUR CODE BOTTOM OF TRANSFORMER YEL., RED, BLK.
- INSTALL NAMEPLATE.

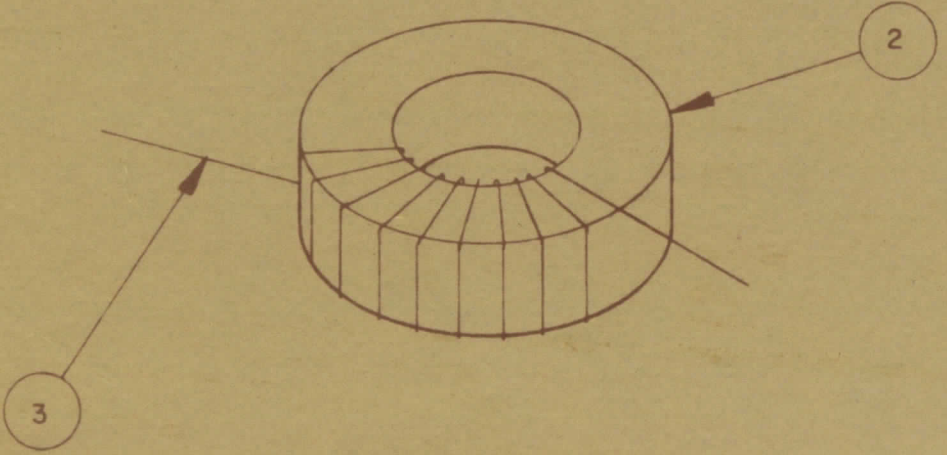
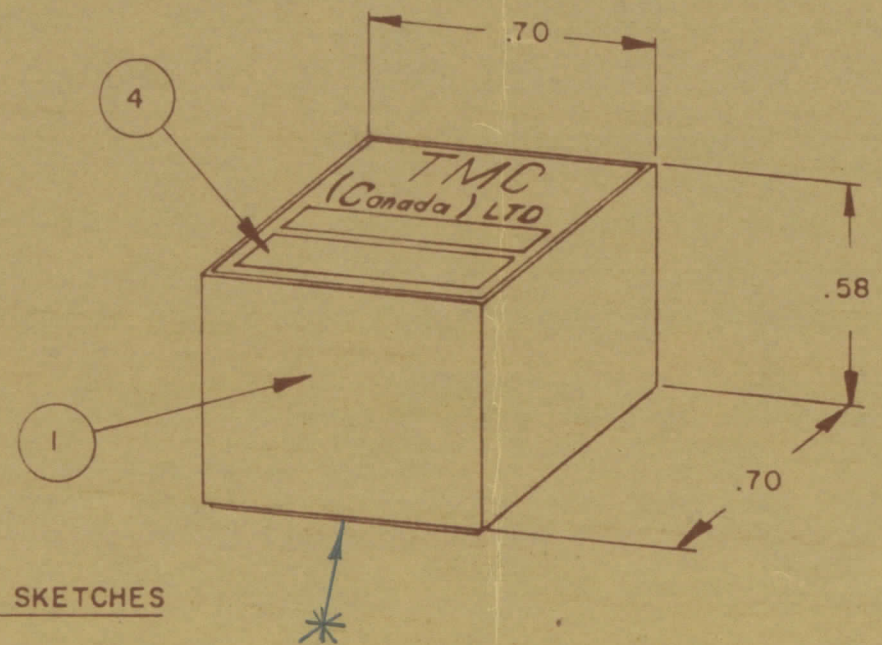


FIRST DIGIT  
 SECOND DIGIT  
 LETTER (IF REQ'D)  
 A - WHITE  
 B - BLACK

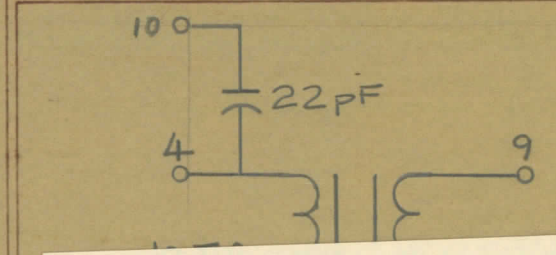
DIRECTION OF WINDING TO BE CLOSELY FOLLOWED AS SHOWN IN SKETCHES. ALL LEADS TO BE 1 INCH LONG. TIN LEADS BACK 3/4 INCH.



COLOUR CODE MARKING



TYPICAL FOR ALL SKETCHES



DATE 29 April 71

TT10005-all	Ø
PART NO.	REV.

THIS DRAWING HAS BEEN YELLOW FLAGGED. CHANGES PROPOSED.

AFFECTS MANUFACTURE

DOES NOT AFFECT MANUFACTURE

For Material Control use only

STOP PROCUREMENT

CONTINUE PROCUREMENT



IF IT IS FOUND DESIRABLE TO CHANGE ANY TOLERANCE OR OTHER DETAIL SPECIFIED ON THIS DRAWING NOTIFY THE PURCHASER PROMPTLY		DIMENSIONS IN INCHES UNLESS OTHERWISE SPECIFIED					
MAXIMUM ALLOWABLE TOLERANCES HAVE BEEN DETERMINED AND DEVIATIONS WILL BE CAUSE FOR REJECTION. REMOVE ALL BURRS AND SHARP EDGES							
ISSUE	ITEM	CHANGED FROM	DATE	EN. NO.	DRAFTS	CHECKER	ENG. APP.
0		REL TO PROD	DVG 26/68		AP	JY	AJ
A		Item ① was BP10002-1	6-23-82	21966	JH	JY	AJ

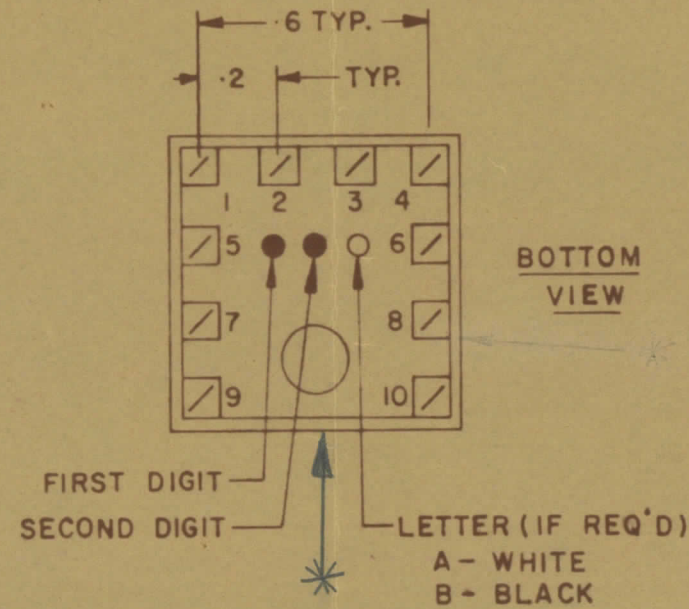
TT10005-43A A

**NOTE-**

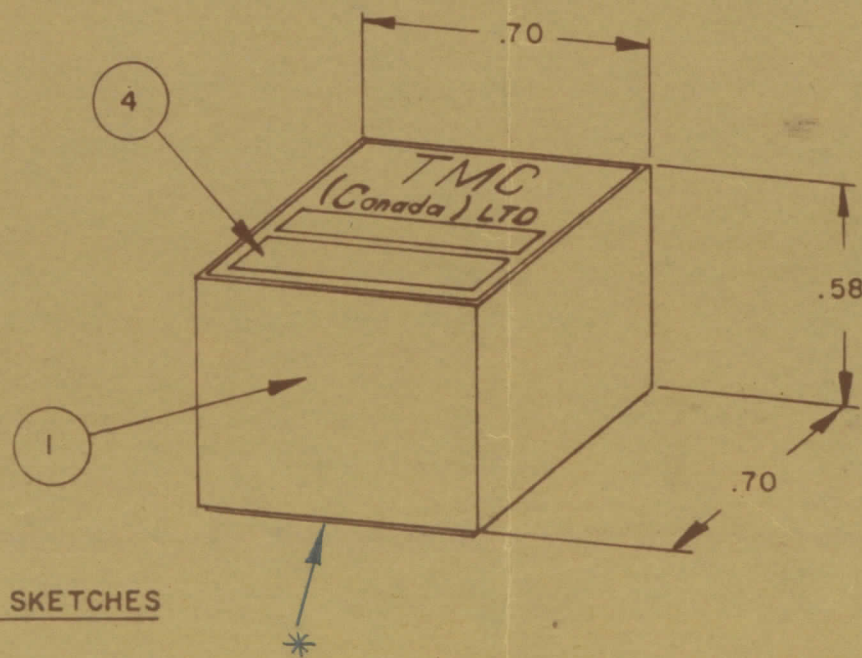
- 1- COLOUR CODE INDICATES LAST TWO DIGITS AND LETTER IN TMC PART NO.
- 2- \* -INDICATES POSITION OF NAMEPLATE.

**ASSEMBLY INSTRUCTIONS:-**

1. WIND 8 TURNS OF ITEM 3 AS SHOWN IN SKETCH 1.
2. WIND 3 TURNS OF ITEM 3 AS SHOWN IN SKETCH 2.
3. WIND \_\_\_\_\_ TURNS OF ITEM \_\_\_\_\_ AS SHOWN IN SKETCH 3.
4. DIP COIL IN ITEM 5 AND BAKE FOR \_\_\_\_\_ HR. AT \_\_\_\_\_ OF.
5. REMOVE 2 TURNS FROM THE PRIMARY IF NECESSARY TO OBTAIN THE FOLLOWING AT TEST FREQ. OF 7.9 MHz
  - a) INDUCTANCE IN  $\mu H$ . 1.45 ± 0.07
  - b) Q MINIMUM \_\_\_\_\_
6. MAXIMUM NUMBER OF TURNS TO BE REMOVED 2
7. MOUNT TRANSFORMER ON BASE & CONNECT WIRES TO CORRESPONDING PINS.
8. INSTALL ITEM 7 & \_\_\_\_\_ BETWEEN PINS 1 & 10.
9. INSTALL ITEM \_\_\_\_\_ & \_\_\_\_\_ BETWEEN PINS \_\_\_\_\_ & \_\_\_\_\_.
10. INSTALL ITEM \_\_\_\_\_ BETWEEN PINS \_\_\_\_\_ & \_\_\_\_\_.
11. POT TRANSFORMER USING ITEM 6 AS PER SPEC. S 10149.
12. COLOUR CODE BOTTOM OF TRANSFORMER \_\_\_\_\_.
13. INSTALL NAMEPLATE.



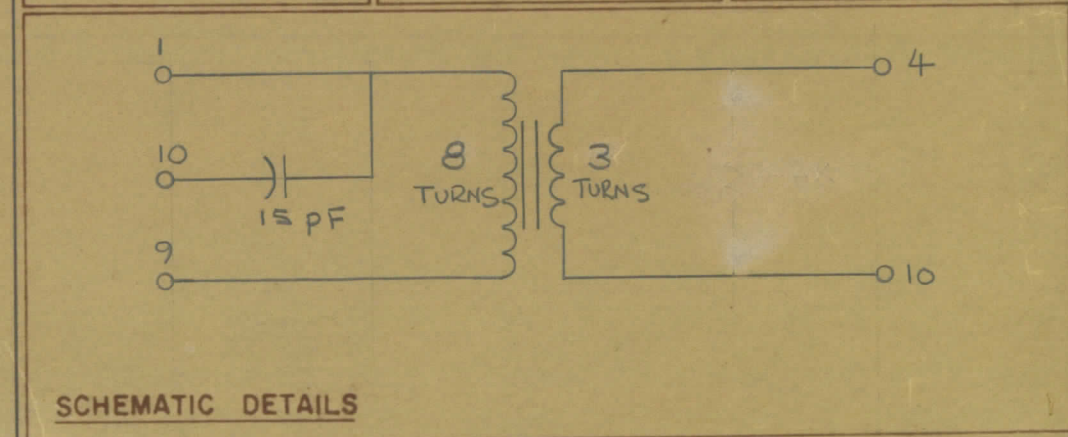
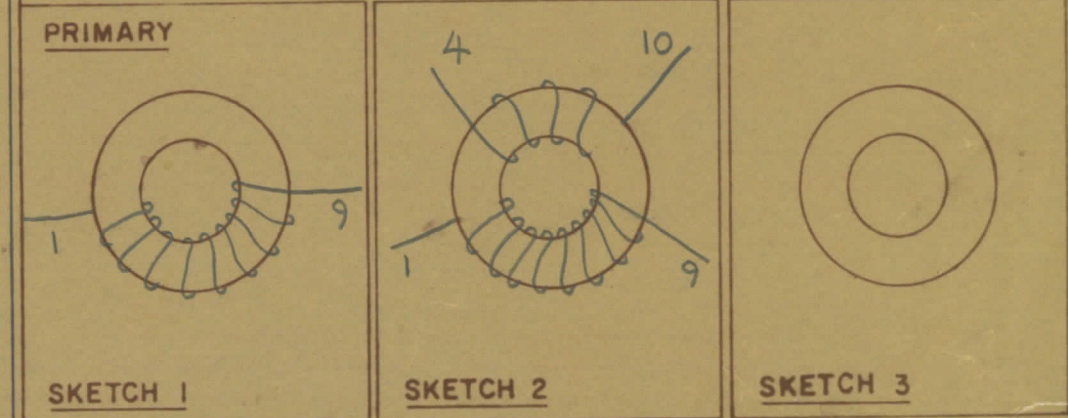
**COLOUR CODE MARKING**



TYPICAL FOR ALL SKETCHES

REQ	ITEM	PART NO.	DESCRIPTION	SYMBOL
1	1	BP10011	MODU - CON	
1	2	CI-10011-1-Q2	CORE	
AR	3	WI-123-2B	WIRE MAGNET	
1	4	NP 10157	NAMEPLATE	
AR	5	GL130	Q-DOPE	
AR	6	GL10005-3110 H	ENCAPSULANT	
1	7	CC 10014-1	CAPACITOR, FIXED.	
	8			
	9			
	10			
	11			
	12			

DIRECTION OF WINDING TO BE CLOSELY FOLLOWED AS SHOWN IN SKETCHES. ALL LEADS TO BE 1 INCH LONG. TIN LEADS BACK 3/4 INCH.



TOLERANCES UNLESS OTHERWISE SPECIFIED	SCALE
DEC DIM X = .05 FRACTIONAL DIM 1/64 XX = .01 ANGULAR DIM 0°30'	DRILL PUNCH COMMERCIAL STOCK SIZES AND MANUFACTURERS TOLERANCES ARE NOT INCLUDED

TTRR ( ) E	067/68	MAY 16/68
MOD.	PROJECT NO.	DATE

TMC (Canada) LIMITED OTTAWA ONTARIO	
TRANSFORMER RF, TUNED	
RPL	JY
DRW	ENCL DES APP
TT10005-43A A	



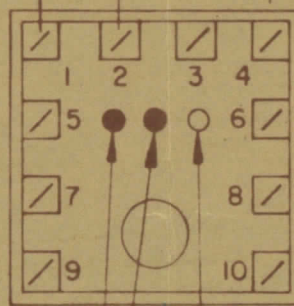
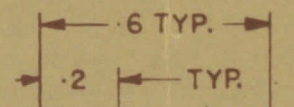
IF IT IS FOUND DESIRABLE TO CHANGE ANY TOLERANCE OR OTHER DETAIL SPECIFIED ON THIS DRAWING NOTIFY THE PURCHASER PROMPTLY		DIMENSIONS IN INCHES UNLESS OTHERWISE SPECIFIED					
MAXIMUM ALLOWABLE TOLERANCES HAVE BEEN DETERMINED AND DEVIATIONS WILL BE KEPT FOR REJECTION REMOVE ALL BURRS AND SHARP EDGES							
REV.	ITEM	CHANGED FROM	DATE	EN. NO.	DRAWN	CHECKER	ENG. APP.
0		REL. TO PROD.	SEPT 10/68		RPL		A.S.

TT10005-43B Ø

**NOTE:-**  
 1- COLOUR CODE INDICATES LAST TWO DIGITS AND LETTER IN TMC PART NO.  
 2- \* -INDICATES POSITION OF NAMEPLATE.

**ASSEMBLY INSTRUCTIONS:-**

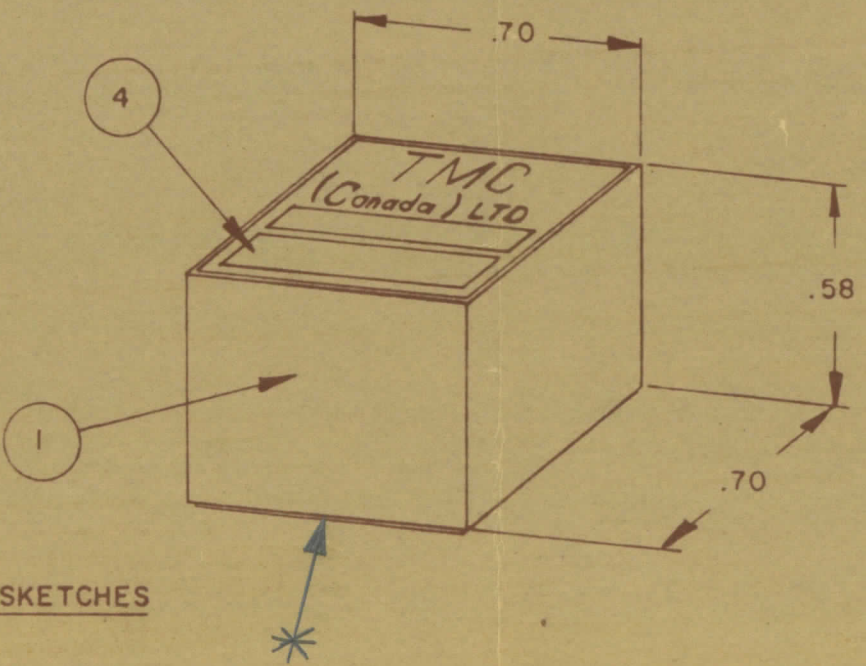
- WIND 10 TURNS OF ITEM 3 AS SHOWN IN SKETCH 1.
- WIND 6 TURNS OF ITEM 3 AS SHOWN IN SKETCH 2.
- WIND \_\_\_\_\_ TURNS OF ITEM \_\_\_\_\_ AS SHOWN IN SKETCH 3.
- DIP COIL IN ITEM 5 AND BAKE FOR 1/2 HR. AT 125°F.
- REMOVE 3 TURNS FROM THE PRIMARY IF NECESSARY TO OBTAIN THE FOLLOWING AT TEST FREQ. OF 25 MHz.
  - INDUCTANCE IN  $\mu H$ .  $0.6 \pm 0.05$ .
  - Q MINIMUM \_\_\_\_\_
- MAXIMUM NUMBER OF TURNS TO BE REMOVED 3.
- MOUNT TRANSFORMER ON BASE & CONNECT WIRES TO CORRESPONDING PINS.
- INSTALL ITEM 7 & BETWEEN PINS 1 & 10.
- INSTALL ITEM 8 BETWEEN PINS \_\_\_\_\_ & \_\_\_\_\_.
- INSTALL ITEM \_\_\_\_\_ BETWEEN PINS \_\_\_\_\_ & \_\_\_\_\_.
- POT TRANSFORMER USING ITEM 6 AS PER SPEC. S10149.
- COLOUR CODE BOTTOM OF TRANSFORMER YEL., ORG., BLK.
- INSTALL NAMEPLATE.



**BOTTOM VIEW**

FIRST DIGIT  
 SECOND DIGIT \* LETTER (IF REQ'D)  
 A - WHITE  
 B - BLACK

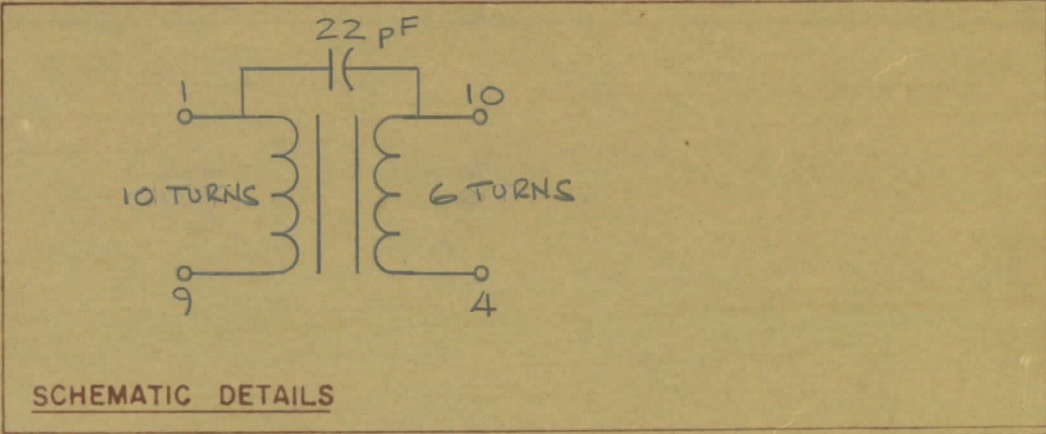
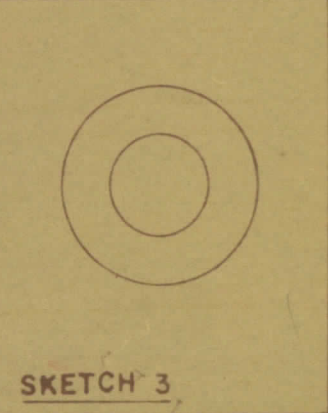
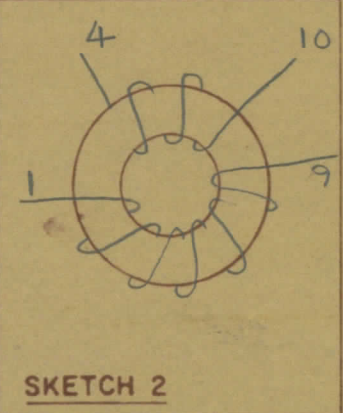
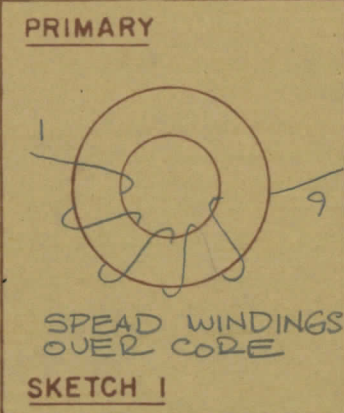
**COLOUR CODE MARKING**



**TYPICAL FOR ALL SKETCHES**

REV.	ITEM	PART NO.	DESCRIPTION
1	1	BPI0002-1	MODU - CON
1	2	CI-127-1	CORE
AR	3	WI-123-28	WIRE MAGNET
1	4	NP 10157	NAMEPLATE
AR	5	GL 130	Q-DOPE
AR	6	GL 10005-3110 H	ENCAPSULANT
1	7	CM10002-C-220J	CAPACITOR, FIXED MICA
	8		
	9		
	10		
	11		
	12		

DIRECTION OF WINDING TO BE CLOSELY FOLLOWED AS SHOWN IN SKETCHES. ALL LEADS TO BE 1 INCH LONG. TIN LEADS BACK 3/4 INCH.



**TMC (Canada) LIMITED**  
 OTTAWA ONTARIO

TRANSFORMER RF,

TUNED

RPL  
 A.S.  
*[Handwritten signatures]*

TOLERANCES UNLESS OTHERWISE SPECIFIED	SCALE
DEC DIM X = .05 FRACTIONAL DIM XX = .01 ANGULAR DIM 64 XXX = .005	DRILL, PUNCH, COMMERCIAL STOCK SIZES AND MANUFACTURERS TOLERANCES ARE NOT INCLUDED

TTRRE-4B	PROJECT NO.	DATE
		SEPT 10/68

TT10005-43B Ø