

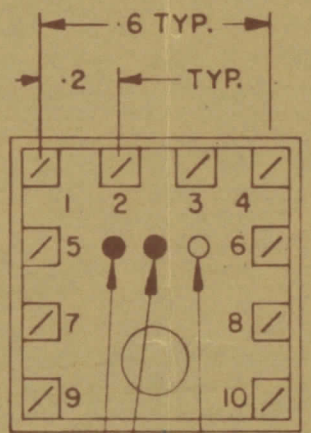
IF IT IS FOUND DESIRABLE TO CHANGE ANY TOLERANCE OR OTHER DETAIL SPECIFIED ON THIS DRAWING NOTIFY THE PURCHASER PROMPTLY		DIMENSIONS IN INCHES UNLESS OTHERWISE SPECIFIED					
MAXIMUM ALLOWABLE TOLERANCES HAVE BEEN DETERMINED AND DEVIATIONS WILL BE KEPT FOR REJECTION REMOVE ALL BURRS AND SHARP EDGES							
REV.	ITEM	CHANGED FROM	DATE	EN. NO.	DRAWN	CHECKER	ENG. APP.
0		REL. TO PROD.	SEPT 10/68		RPL		A.S.

TT10005-43B Ø

**NOTE:-**  
 1- COLOUR CODE INDICATES LAST TWO DIGITS AND LETTER IN TMC PART NO.  
 2- \* -INDICATES POSITION OF NAMEPLATE.

**ASSEMBLY INSTRUCTIONS:-**

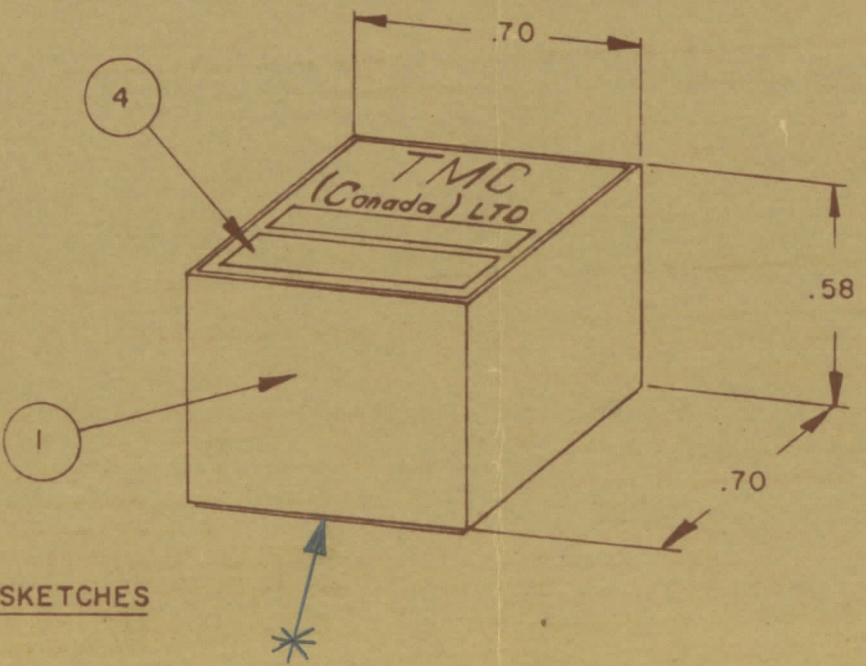
- WIND 10 TURNS OF ITEM 3 AS SHOWN IN SKETCH 1.
- WIND 6 TURNS OF ITEM 3 AS SHOWN IN SKETCH 2.
- WIND \_\_\_\_\_ TURNS OF ITEM \_\_\_\_\_ AS SHOWN IN SKETCH 3.
- DIP COIL IN ITEM 5 AND BAKE FOR 1/2 HR. AT 125°F.
- REMOVE 3 TURNS FROM THE PRIMARY IF NECESSARY TO OBTAIN THE FOLLOWING AT TEST FREQ. OF 25 MHz.
  - INDUCTANCE IN  $\mu$ H.  $0.6 \pm 0.05$ .
  - Q MINIMUM \_\_\_\_\_.
- MAXIMUM NUMBER OF TURNS TO BE REMOVED 3.
- MOUNT TRANSFORMER ON BASE & CONNECT WIRES TO CORRESPONDING PINS.
- INSTALL ITEM 7 & BETWEEN PINS 1 & 10.
- INSTALL ITEM 8 BETWEEN PINS \_\_\_\_\_ & \_\_\_\_\_.
- INSTALL ITEM \_\_\_\_\_ BETWEEN PINS \_\_\_\_\_ & \_\_\_\_\_.
- POT TRANSFORMER USING ITEM 6 AS PER SPEC. S10149.
- COLOUR CODE BOTTOM OF TRANSFORMER YEL., ORG., BLK.
- INSTALL NAMEPLATE.



**BOTTOM VIEW**

FIRST DIGIT  
 SECOND DIGIT  
 LETTER (IF REQ'D)  
 A - WHITE  
 B - BLACK

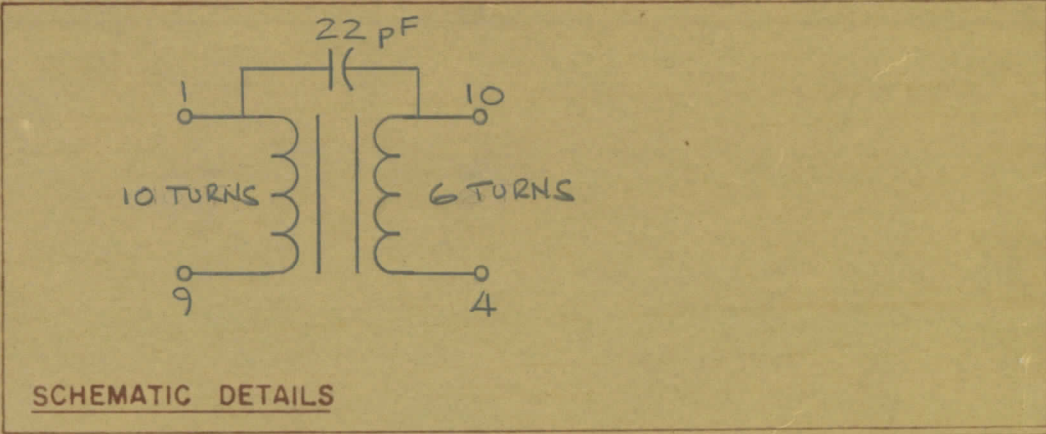
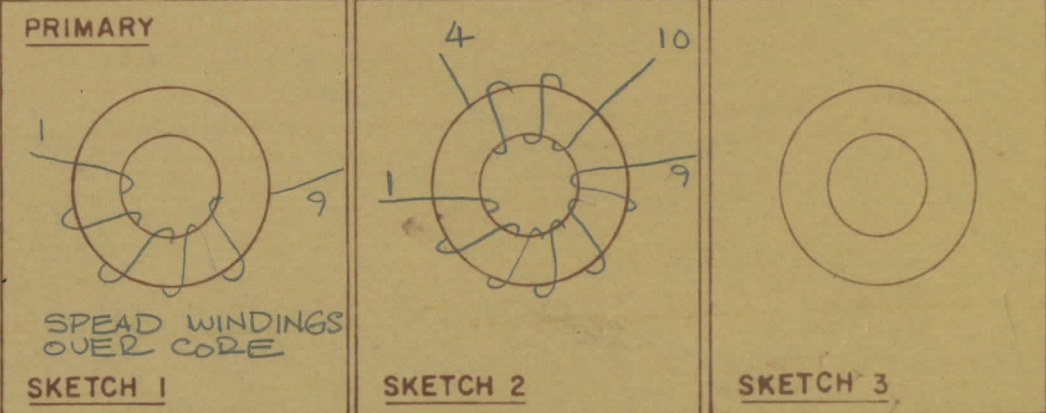
**COLOUR CODE MARKING**



**TYPICAL FOR ALL SKETCHES**

REV.	ITEM	PART NO.	DESCRIPTION
1	1	BPI0002-1	MODU - CON
1	2	CI-127-1	CORE
AR	3	WI-123-28	WIRE MAGNET
1	4	NP 10157	NAMEPLATE
AR	5	GL 130	Q-DOPE
AR	6	GL 10005-3110 H	ENCAPSULANT
1	7	CM10002-C-220J	CAPACITOR, FIXED MICA
	8		
	9		
	10		
	11		
	12		

DIRECTION OF WINDING TO BE CLOSELY FOLLOWED AS SHOWN IN SKETCHES. ALL LEADS TO BE 1 INCH LONG. TIN LEADS BACK 3/4 INCH.



**TMC (Canada) LIMITED**  
 OTTAWA ONTARIO

TRANSFORMER RF,

TUNED

RPL  
 A.S.  
*[Handwritten signatures]*

TOLERANCES UNLESS OTHERWISE SPECIFIED	SCALE
DEC DIM X = .05 FRACTIONAL DIM XX = .01 ANGULAR DIM 64 XXX = .005	DRILL, PUNCH, COMMERCIAL STOCK SIZES AND MANUFACTURERS TOLERANCES ARE NOT INCLUDED

TT10005-43B	SEPT 10/68
PROJECT NO.	DATE

TT10005-43B Ø