

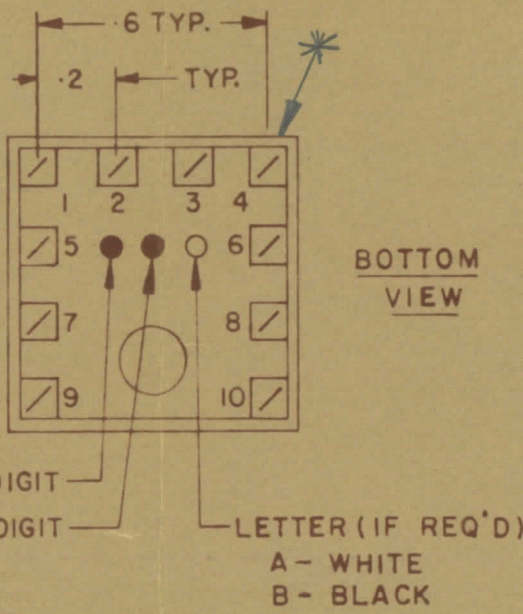
UNLESS OTHERWISE SPECIFIED, CHANGE ANY TOLERANCE OR OTHER DATA SPECIFIED IN THIS DRAWING TO THE FOLLOWING:		DIMENSIONS IN INCHES UNLESS OTHERWISE SPECIFIED				
MAXIMUM ALLOWABLE TOLERANCES HAVE BEEN DETERMINED AND SPECIFICATIONS WILL BE HELD FOR REJECTION, REMOVE ALL BURRS AND SHARP EDGES		OTHERWISE SPECIFIED				
REV.	ITEM	CHANGED FROM	DATE	BY	CHECKER	ENG. APP.
0		REL. TO PROD.	SEPT 10/68	RPL		A.S.

TT10005-42B

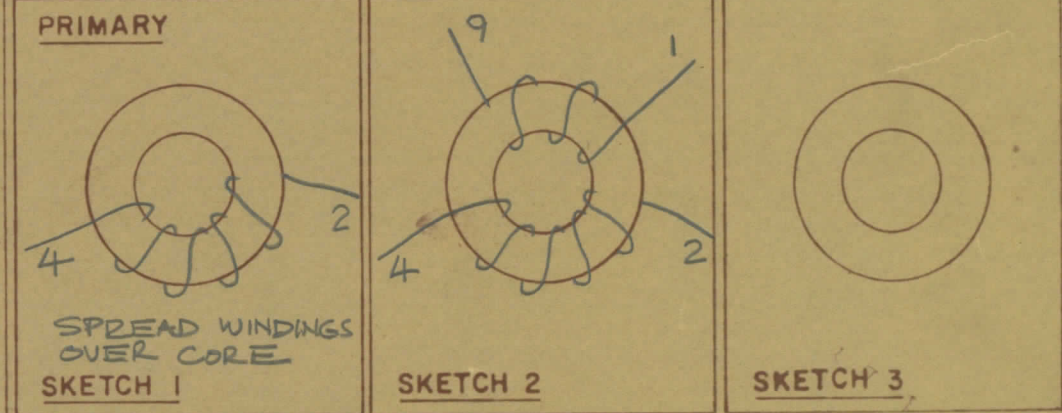
NOTE:-
 1- COLOUR CODE INDICATES LAST TWO DIGITS AND LETTER IN TMC PART NO.
 2- * -INDICATES POSITION OF NAMEPLATE.

ASSEMBLY INSTRUCTIONS:-

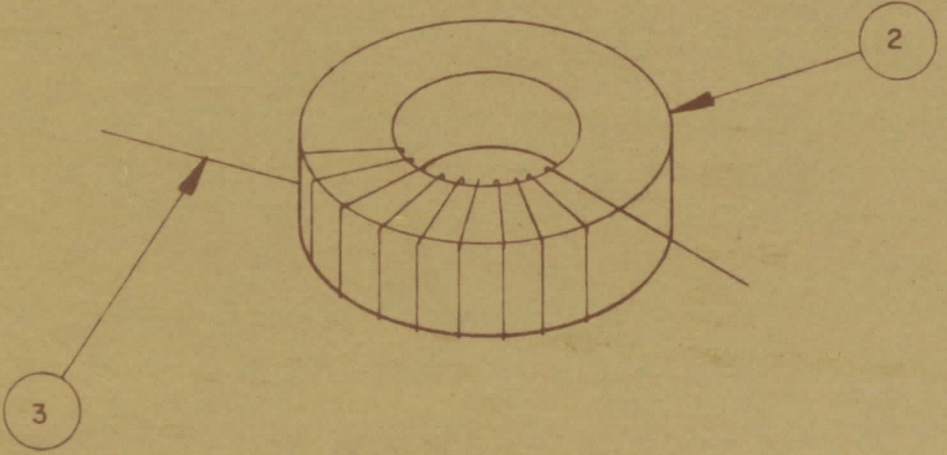
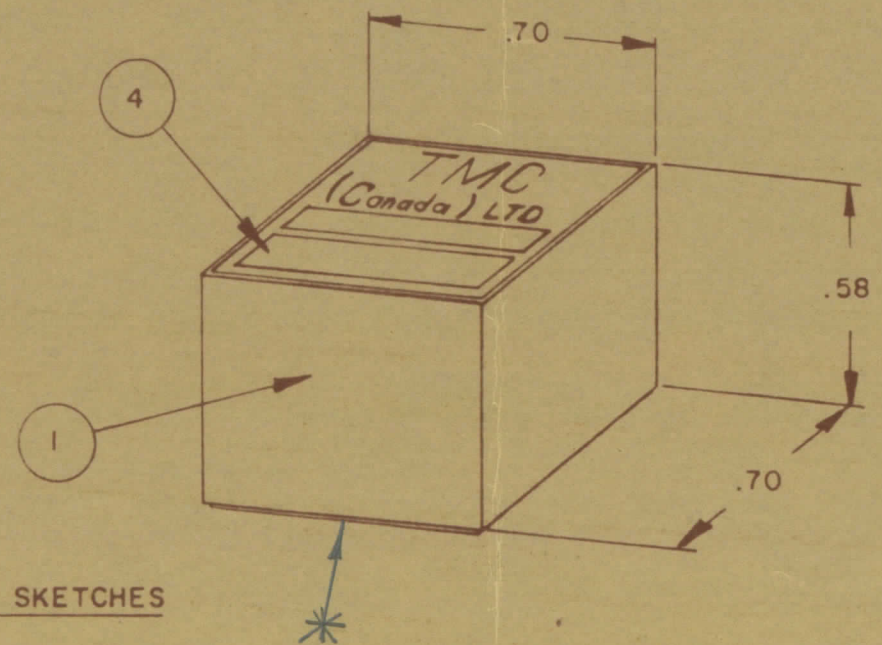
- WIND 10 TURNS OF ITEM 3 AS SHOWN IN SKETCH 1.
- WIND 6 TURNS OF ITEM 3 AS SHOWN IN SKETCH 2.
- WIND _____ TURNS OF ITEM _____ AS SHOWN IN SKETCH 3.
- DIP COIL IN ITEM 5 AND BAKE FOR 1/2 HR. AT 125°F.
- REMOVE 3 TURNS FROM THE PRIMARY IF NECESSARY TO OBTAIN THE FOLLOWING AT TEST FREQ. OF 25 MHz.
 a) INDUCTANCE IN μ H. 0.6 ± 0.05.
 b) Q MINIMUM _____
- MAXIMUM NUMBER OF TURNS TO BE REMOVED 3
- MOUNT TRANSFORMER ON BASE & CONNECT WIRES TO CORRESPONDING PINS.
- INSTALL ITEM 7 & _____ BETWEEN PINS 4 & 10.
- INSTALL ITEM _____ & _____ BETWEEN PINS _____ & _____.
- INSTALL ITEM _____ BETWEEN PINS _____ & _____.
- POT TRANSFORMER USING ITEM 6 AS PER SPEC. S10149.
- COLOUR CODE BOTTOM OF TRANSFORMER YEL., RED, BLK.
- INSTALL NAMEPLATE.



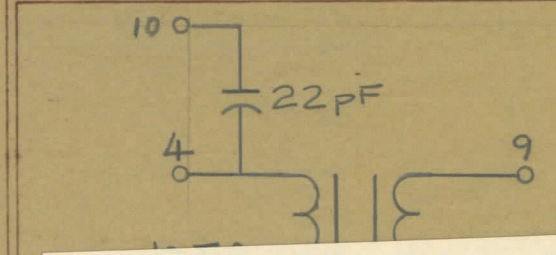
DIRECTION OF WINDING TO BE CLOSELY FOLLOWED AS SHOWN IN SKETCHES. ALL LEADS TO BE 1 INCH LONG. TIN LEADS BACK 3/4 INCH.



COLOUR CODE MARKING



TYPICAL FOR ALL SKETCHES



DATE 29 April 71 TT10005-all ϕ

PART NO.	REV.
----------	------

THIS DRAWING HAS BEEN YELLOW FLAGGED. CHANGES PROPOSED.

AFFECTS MANUFACTURE

DOES NOT AFFECT MANUFACTURE

For Material Control use only

STOP PROCUREMENT

CONTINUE PROCUREMENT