

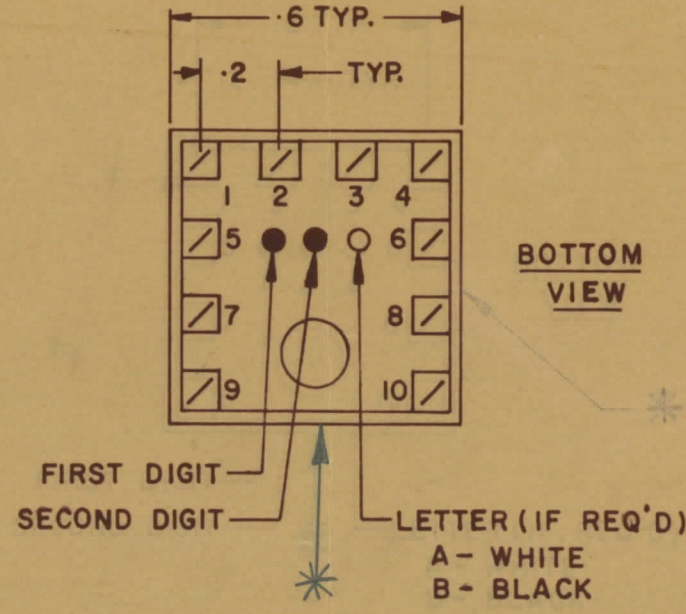
IF IT IS FOUND DESIRABLE TO CHANGE ANY TOLERANCE OR OTHER DETAIL SPECIFIED ON THIS DRAWING NOTIFY THE PURCHASER PROMPTLY		DIMENSIONS IN INCHES UNLESS OTHERWISE SPECIFIED					
MAXIMUM ALLOWABLE TOLERANCES HAVE BEEN DETERMINED AND DEVIATIONS WILL BE CAUSE FOR REJECTION REMOVE ALL BURRS AND SHARP EDGES							
ISSUE	ITEM	CHANGED FROM	DATE	CN NO	DRAFTS	CHECKER	ENG APP
0		REL TO PROD.	FEB 5/68		RPL	JN	MA

TT10003-1

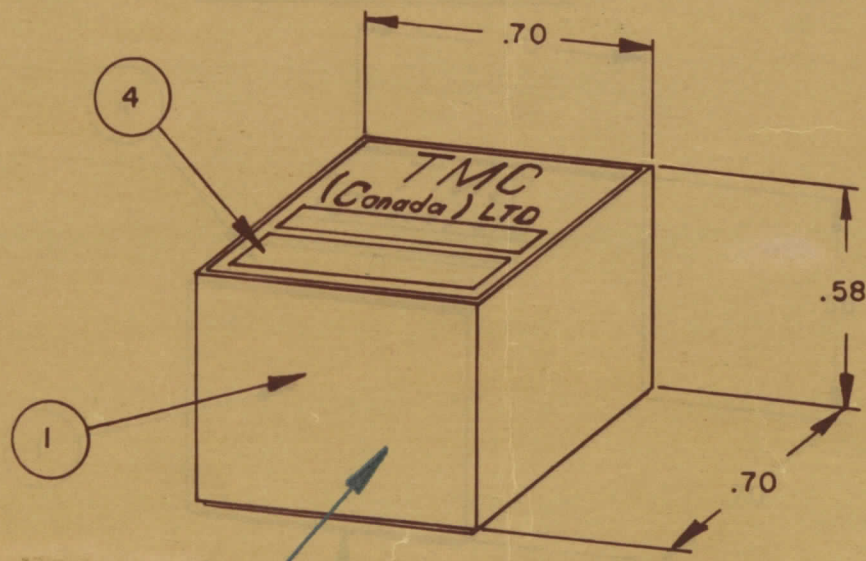
**NOTE:-**  
 1- COLOUR CODE INDICATES LAST TWO DIGITS AND LETTER IN TMC PART NO.  
 2- \* -INDICATES POSITION OF NAMEPLATE.

**ASSEMBLY INSTRUCTIONS:-**

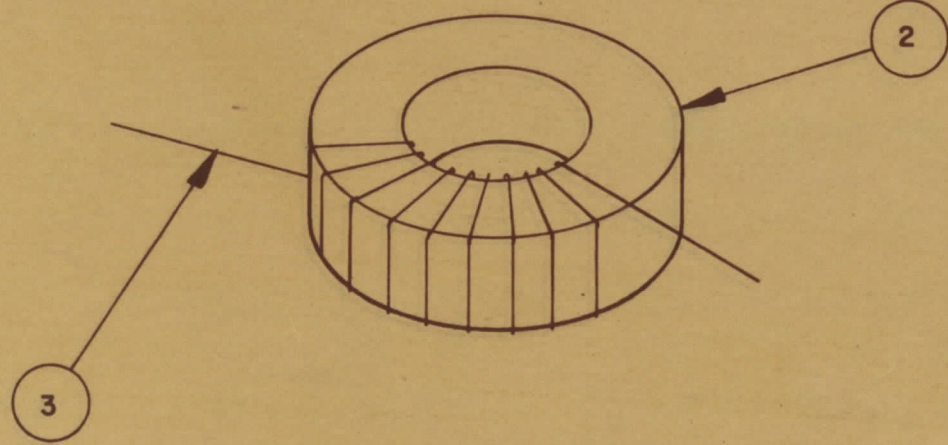
- WIND 23 TURNS OF ITEM 3 AS SHOWN IN SKETCH 1.
- WIND 4 TURNS OF ITEM 3 AS SHOWN IN SKETCH 2.
- WIND 4 TURNS OF ITEM 3 AS SHOWN IN SKETCH 3.
- DIP COIL IN ITEM 5 AND BAKE FOR 1/2 HR. AT 125 °F.
- REMOVE 1 TURNS FROM THE PRIMARY IF NECESSARY TO OBTAIN THE FOLLOWING AT TEST FREQ. OF 2.5 MHz.  
 a) INDUCTANCE IN  $\mu H$ . 35 ± 1 TURN.  
 b) Q MINIMUM \_\_\_\_\_.
- MAXIMUM NUMBER OF TURNS TO BE REMOVED 1.
- MOUNT TRANSFORMER ON BASE & CONNECT WIRES TO CORRESPONDING PINS.
- INSTALL ITEM 7 & 8 BETWEEN PINS 4 & 1.
- INSTALL ITEM 8 BETWEEN PINS 8 & \_\_\_\_\_.
- INSTALL ITEM \_\_\_\_\_ BETWEEN PINS \_\_\_\_\_ & \_\_\_\_\_.
- POT TRANSFORMER USING ITEM 6 AS PER SPEC. S 10149.
- COLOUR CODE BOTTOM OF TRANSFORMER BLK, BRN, \_\_\_\_\_.
- INSTALL NAMEPLATE.



**COLOUR CODE MARKING**

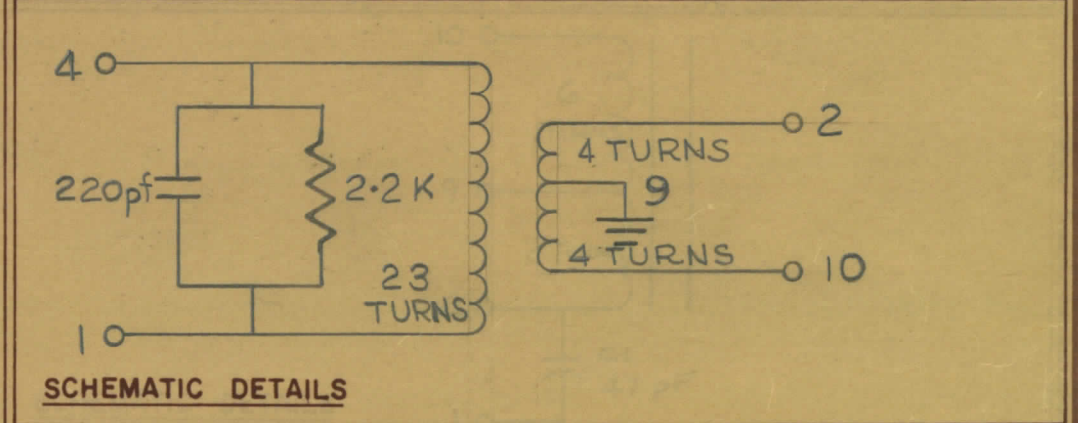
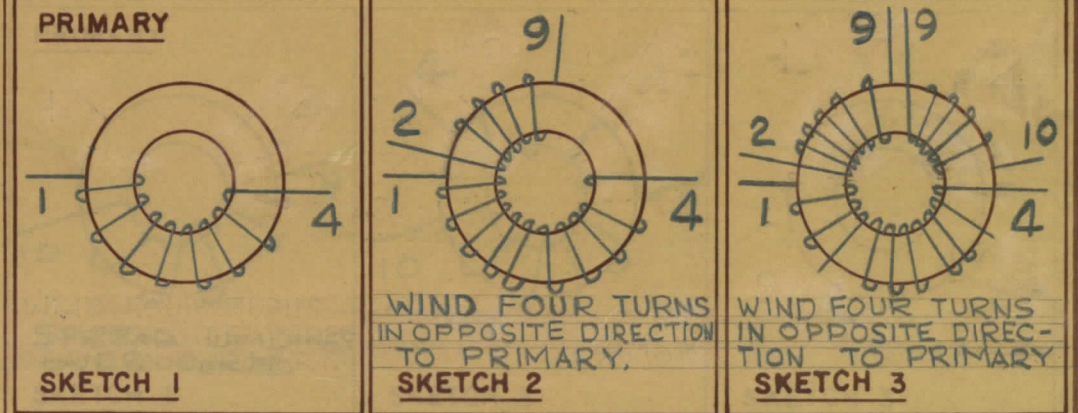


TYPICAL FOR ALL SKETCHES \*



REQ	ITEM	PART NO	DESCRIPTION	SYMBOL
1	1	BPI0002-1	MODU - CON	
1	2	CI-10011-1-Q1	CORE	
AR	3	WI-122-30	WIRE MAGNET	
1	4	NP 10157	NAMEPLATE	
AR	5	GL 130	Q-DOPE	
AR	6	GL 10005-3110 H	ENCAPSULANT	
1	7	RC07GF222J	RESISTOR	
1	8	CMIII E 221JIS	CAPACITOR	
	9			
	10			
	11			
	12			

-:DIRECTION OF WINDING TO BE CLOSELY FOLLOWED AS SHOWN IN SKETCHES. ALL LEADS TO BE 1 INCH LONG, TIN LEADS BACK 3/4 INCH.



TOLERANCES UNLESS OTHERWISE SPECIFIED		SCALE
ALL OTHERS	DEC DIM - 1/64 FRAC DIM - 1/64 ANGULAR DIM - 0°30'	.X = .05 .XX = .01 .XXX = .005
DRILL, PUNCH, COMMERCIAL STOCK SIZES AND MANUFACTURERS TOLERANCES ARE NOT INCLUDED		

MODEL	PROJECT NO	ASSY NO	DATE
TTRR (1) D	067/68		2 FEB 68
USED ON			

STOCK SIZE		TMC (Canada) LIMITED OTTAWA ONTARIO	
MATERIAL		TRANSFORMER RF,	
WEIGHT PER PC		TUNED	
TYPE & TEMPER		AP DRAWN	AS ELEC DES APP
HEAT TREAT SPEC		RPL CHECKED	MA MECH DES APP
FINISH & SPEC NO		FINAL APPROVAL	
		TT 10003-1	