

IF IT IS FOUND DESIRABLE TO CHANGE ANY TOLERANCE OR OTHER DETAIL SPECIFIED ON THIS DRAWING NOTIFY THE PURCHASER PROMPTLY.				DIMENSIONS IN INCHES UNLESS OTHERWISE SPECIFIED.			
MAXIMUM ALLOWABLE TOLERANCES HAVE BEEN DETERMINED AND DEVIATIONS WILL BE CAUSE FOR REJECTION. REMOVE ALL BURRS AND SHARP EDGES.							
ISSUE	ITEM	CHANGED FROM	DATE	CN. NO.	DRAFTS	CHECKER	ENG. APP.
Ø		REL TO PROD.	JAN 30/68		RPL		<i>[Signature]</i>
A		REV. AS PER CEMN	DEC 7/72	1208	PJM		<i>[Signature]</i>

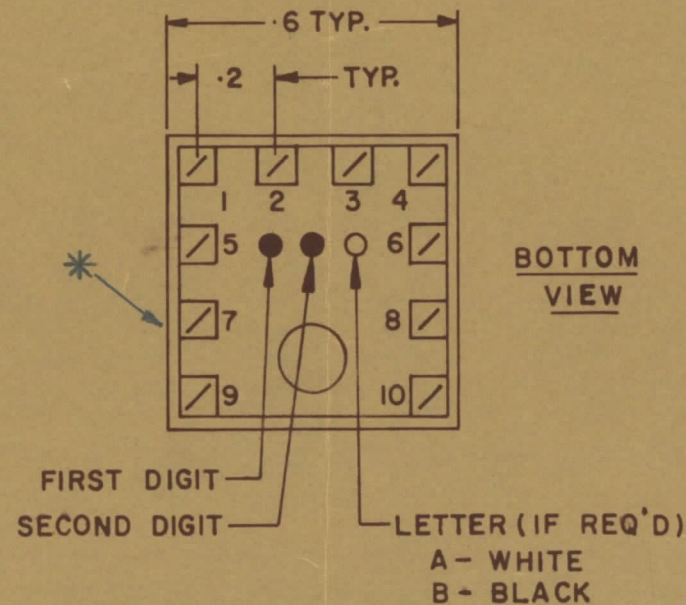
TT10002-11A A

**NOTE:-**

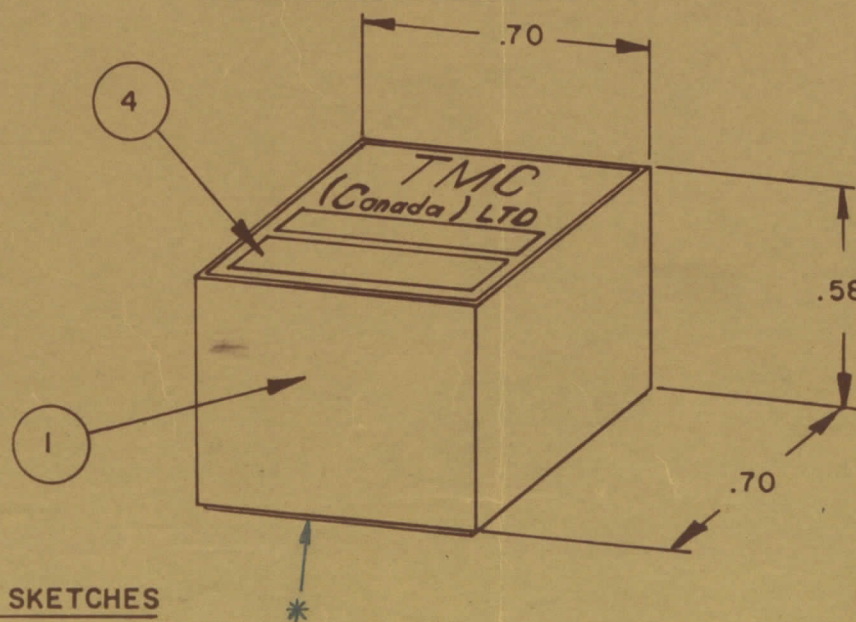
- 1- COLOUR CODE INDICATES LAST TWO DIGITS AND LETTER IN TMC PART NO.
- 2- \* -INDICATES POSITION OF NAMEPLATE.

**ASSEMBLY INSTRUCTIONS:-**

1. WIND 35 TURNS OF ITEM 3 AS SHOWN IN SKETCH 1.
2. WIND 7 TURNS OF ITEM 7 AS SHOWN IN SKETCH 2.
3. WIND      TURNS OF ITEM      AS SHOWN IN SKETCH 3.
4. DIP COIL IN ITEM 5 AND BAKE FOR 1/2 HR. AT 125 OF.
5. REMOVE 1 TURNS FROM THE PRIMARY IF NECESSARY TO OBTAIN THE FOLLOWING AT TEST FREQ. OF 2.5 MHZ.
  - a) INDUCTANCE IN  $\mu$ H. 65 ± 4.
  - b) Q MINIMUM     .
6. MAXIMUM NUMBER OF TURNS TO BE REMOVED 1.
7. MOUNT TRANSFORMER ON BASE & CONNECT WIRES TO CORRESPONDING PINS.
8. INSTALL ITEM 3 & 9 BETWEEN PINS 9 & 10.
9. INSTALL ITEM      &      BETWEEN PINS      &     .
10. INSTALL ITEM      BETWEEN PINS      &     .
11. POT TRANSFORMER USING ITEM 6 AS PER SPEC. S 10149.
12. COLOUR CODE BOTTOM OF TRANSFORMER BRN, BRN, WHT.
13. INSTALL NAMEPLATE.



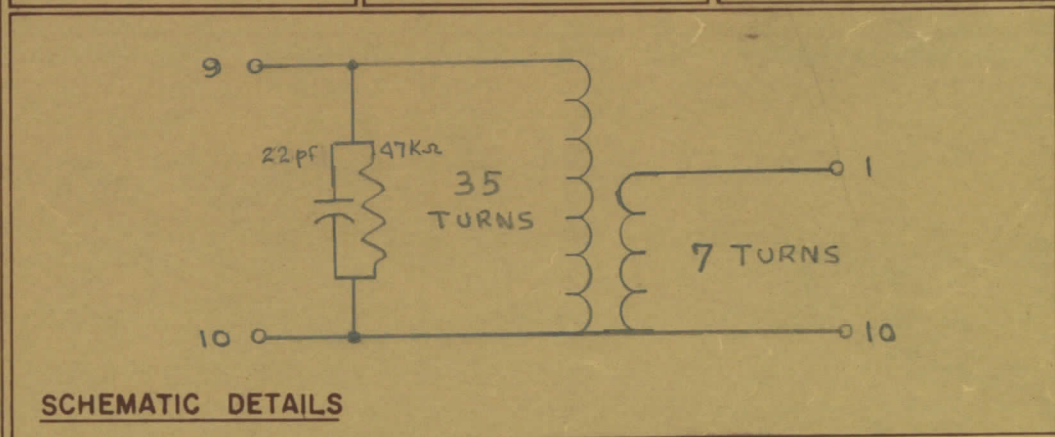
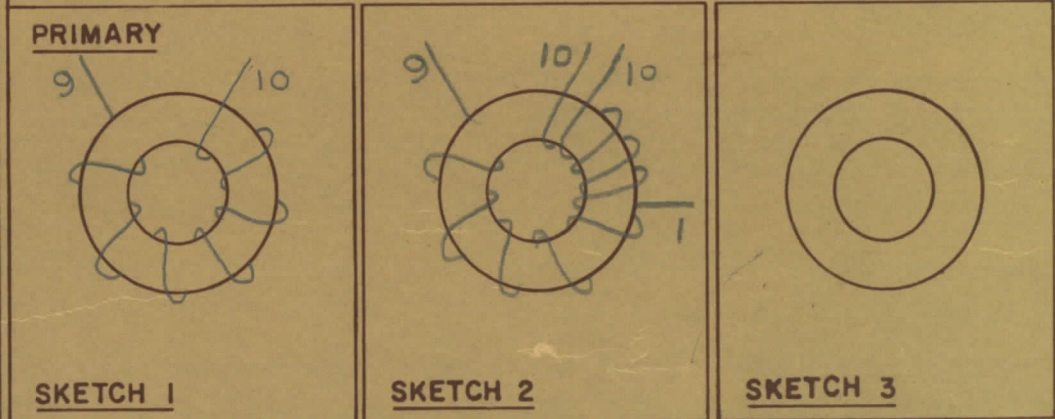
**COLOUR CODE MARKING**



TYPICAL FOR ALL SKETCHES

REQ.	ITEM	PART NO.	DESCRIPTION	SYMBOL
1	1	BPI0011	COIL CASE ASSEMBLY	
1	2	CI-10011-1-Q1	CORE	
AR	3	WI-123-28	WIRE MAGNET	
1	4	NP 10157	NAMEPLATE	
AR	5	GL 130	Q-DOPE	
AR	6	GL 10005-3110 H	ENCAPSULANT	
AR	7	WI-122-30	WIRE MAGNET	
1	8	RC07GF473J	RESISTOR, FIXED	
1	9	CK05BX220K	CAPACITOR, FIXED	
	10			
	11			
	12			

:- DIRECTION OF WINDING TO BE CLOSELY FOLLOWED AS SHOWN IN SKETCHES. ALL LEADS TO BE 1 INCH LONG. TIN LEADS BACK 3/4 INCH.



TOLERANCES UNLESS OTHERWISE SPECIFIED		SCALE
ALL OTHERS	DEC DIM $\frac{1}{64}$ FRAC DIM $\frac{1}{64}$ ANGULAR DIM $0^{\circ}30'$	X = .05 XX = .01 XXX = .005
DRILL, PUNCH, COMMERCIAL STOCK SIZES AND MANUFACTURERS TOLERANCES ARE NOT INCLUDED		

MODEL	TTRR (1A) D	PROJECT NO	067/68	DATE	29 JAN 68
USED ON					

STOCK SIZE		TMC (Canada) LIMITED OTTAWA ONTARIO	
MATERIAL		TRANSFORMER RF,	
WEIGHT PER PC		TUNED	
TYPE & TEMPER		E.T.	<i>[Signature]</i>
HEAT TREAT SPEC		RPL	<i>[Signature]</i>
FINISH & SPEC. NO		FINAL APPROVAL	
		TT 10002-11A A	



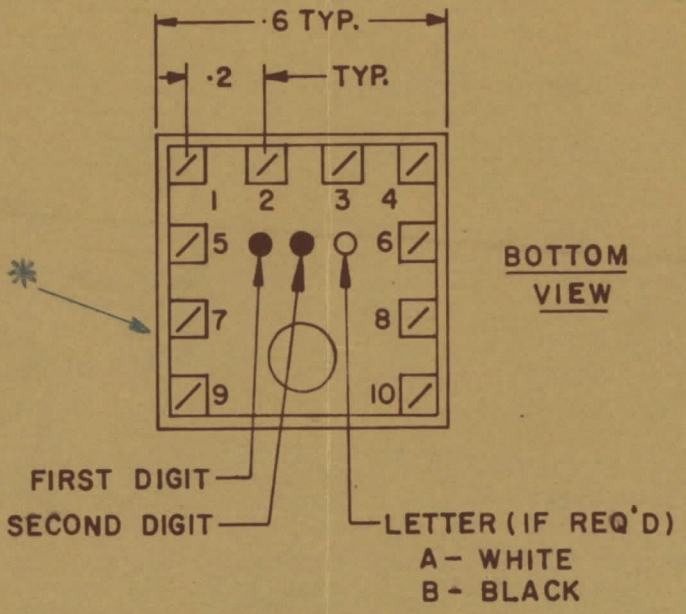
IF IT IS FOUND DESIRABLE TO CHANGE ANY TOLERANCE OR OTHER DETAIL SPECIFIED ON THIS DRAWING NOTIFY THE PURCHASER PROMPTLY					DIMENSIONS IN INCHES UNLESS OTHERWISE SPECIFIED		
MAXIMUM ALLOWABLE TOLERANCES HAVE BEEN DETERMINED AND DEVIATIONS WILL BE CAUSE FOR REJECTION REMOVE ALL BURRS AND SHARP EDGES					OTHERWISE SPECIFIED		
ISSUE	ITEM	CHANGED FROM	DATE	CN NO	DRAFTS	CHECKER	ENG APP.
Ø		REL. TO PROD.	JAN 30/68		RPL		<i>[Signature]</i>
A		REV AS PER CEMN	DEC 3/72	1208	PVM		<i>[Signature]</i>

TT10002-11B A

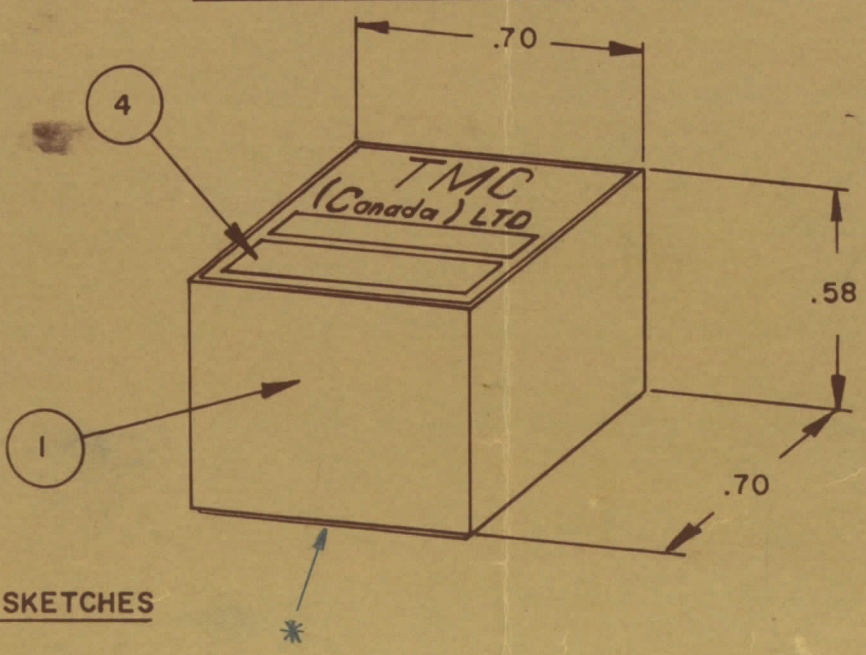
**NOTE:-**  
 1- COLOUR CODE INDICATES LAST TWO DIGITS AND LETTER IN TMC PART NO.  
 2- \* -INDICATES POSITION OF NAMEPLATE.

**ASSEMBLY INSTRUCTIONS:-**

- WIND 25 TURNS OF ITEM 3 AS SHOWN IN SKETCH 1.
- WIND 5 TURNS OF ITEM 9 AS SHOWN IN SKETCH 2.
- WIND     TURNS OF ITEM     AS SHOWN IN SKETCH 3.
- DIP COIL IN ITEM 5 AND BAKE FOR 1/2 HR. AT 125 °F.
- REMOVE 1 TURNS FROM THE PRIMARY IF NECESSARY TO OBTAIN THE FOLLOWING AT TEST FREQ. OF 2.5 MHZ.
  - INDUCTANCE IN  $\mu$ H. 30  $\pm$  3.
  - Q MINIMUM    .
- MAXIMUM NUMBER OF TURNS TO BE REMOVED 1.
- MOUNT TRANSFORMER ON BASE & CONNECT WIRES TO CORRESPONDING PINS.
- INSTALL ITEM 7 & 8 BETWEEN PINS 9 & 10.
- INSTALL ITEM     &     BETWEEN PINS     &    .
- INSTALL ITEM     BETWEEN PINS     &    .
- POT TRANSFORMER USING ITEM 6 AS PER SPEC. S10149.
- COLOUR CODE BOTTOM OF TRANSFORMER BRN, BRN, BLK.
- INSTALL NAMEPLATE.



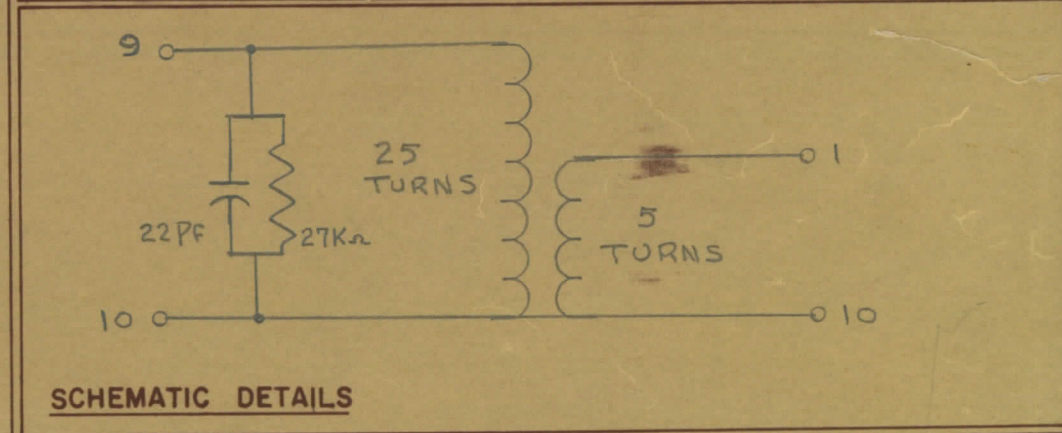
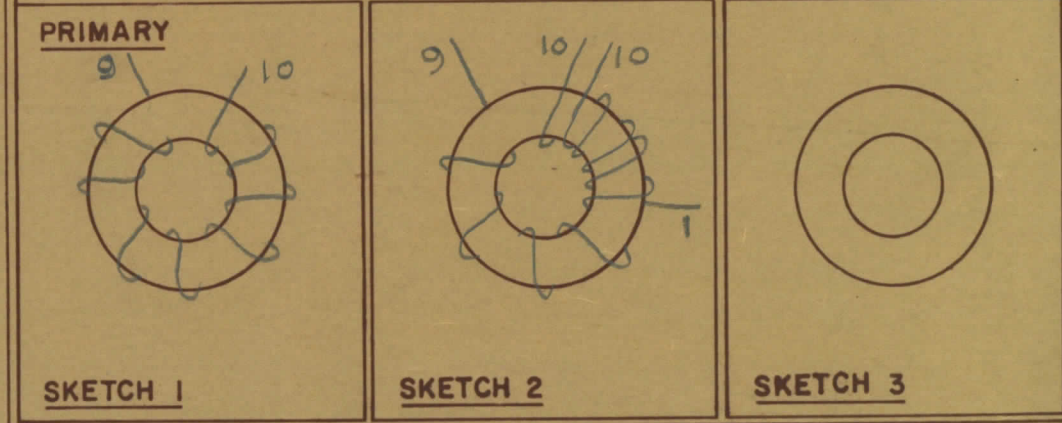
**COLOUR CODE MARKING**



TYPICAL FOR ALL SKETCHES

REQ	ITEM	PART NO.	DESCRIPTION	SYMBOL
1	1	BPI0011	COIL CASE ASSEMBLY	
1	2	CI-10011-1-Q1	CORE	
AR	3	WI-123-28	WIRE MAGNET	
1	4	NP 10157	NAMEPLATE	
AR	5	GL 130	Q-DOPE	
AR	6	GL10005-3110 H	ENCAPSULANT	
1	7	CK05BX220K	CAPACITOR, FIXED	
1	8	RC07GF273J	RESISTOR, FIXED	
AR	9	WI-122-30	WIRE MAGNET	
	10			
	11			
	12			

DIRECTION OF WINDING TO BE CLOSELY FOLLOWED AS SHOWN IN SKETCHES. ALL LEADS TO BE 1 INCH LONG. TIN LEADS BACK 3/4 INCH.



STOCK SIZE		TMC (Canada) LIMITED OTTAWA ONTARIO	
MATERIAL		TRANSFORMER RF,	
WEIGHT PER PC		TUNED	
TYPE & TEMPER		E.T.	<i>[Signature]</i>
HEAT TREAT SPEC		DRAWN	ELEC DES APP
FINISH & SPEC NO		MECH DES APP	FINAL APPROVAL
		RPL	<i>[Signature]</i>
		CHECKED	
		TT 10002-11B A	

TOLERANCES UNLESS OTHERWISE SPECIFIED		SCALE
ALL OTHERS	DEC DIM = 1/64 FRAC DIM = 1/64 ANGULAR DIM = 0°30'	X = .05 XX = .01 XXX = .005
DRILL, PUNCH, COMMERCIAL STOCK SIZES AND MANUFACTURERS TOLERANCES ARE NOT INCLUDED.		

TTRR(1B)D	067/68	29 JAN 68
MODEL	PROJECT NO	ASSY NO
USED ON		



IF IT IS FOUND DESIRABLE TO CHANGE ANY TOLERANCE OR OTHER DETAIL SPECIFIED ON THIS DRAWING NOTIFY THE PURCHASER PROMPTLY.

DIMENSIONS IN INCHES UNLESS OTHERWISE SPECIFIED

MAXIMUM ALLOWABLE TOLERANCES HAVE BEEN DETERMINED AND DEVIATIONS WILL BE CAUSE FOR REJECTION REMOVE ALL BURRS AND SHARP EDGES

REV.	ITEM	CHANGED FROM	DATE	CN NO	DRAFTS	CHECKER	ENG. APP.
Ø		REL. TO PROD.	JAN 30/68		RPL		
A		REV. AS PER CEMN	DEC 7/72	1208	PVM		SDW

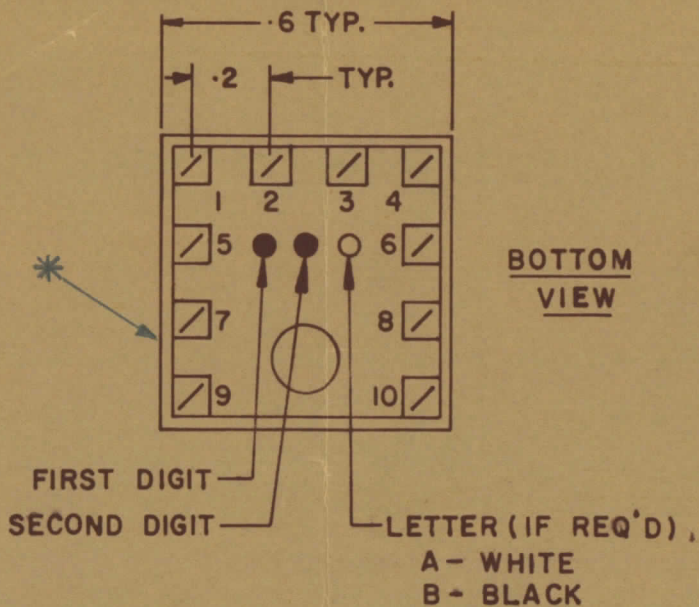
TT10002-12A A

**NOTE:-**

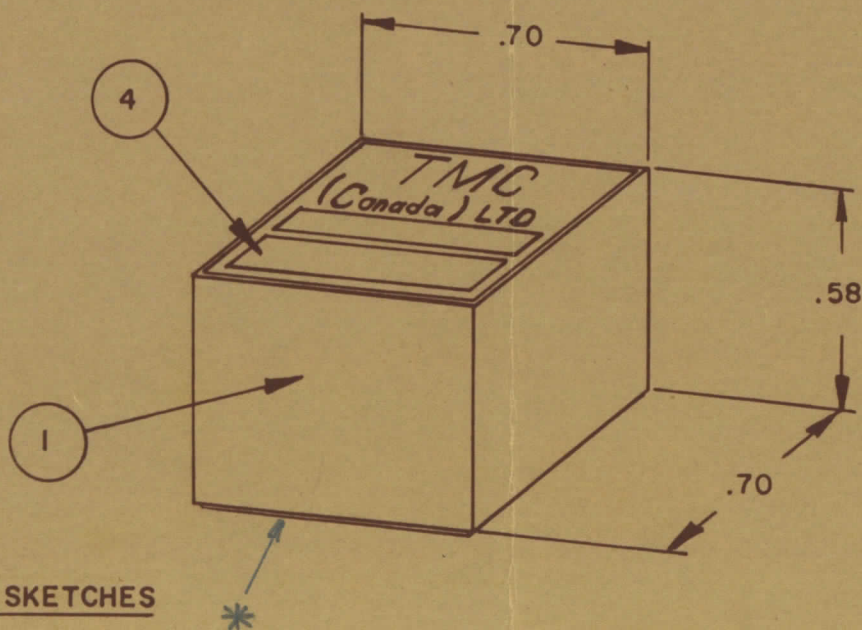
- 1- COLOUR CODE INDICATES LAST TWO DIGITS AND LETTER IN TMC PART NO.
- 2- \* -INDICATES POSITION OF NAMEPLATE.

**ASSEMBLY INSTRUCTIONS:-**

1. WIND 35 TURNS OF ITEM 3 AS SHOWN IN SKETCH 1.
2. WIND --- TURNS OF ITEM --- AS SHOWN IN SKETCH 2.
3. WIND --- TURNS OF ITEM --- AS SHOWN IN SKETCH 3.
4. DIP COIL IN ITEM 5 AND BAKE FOR 1/2 HR. AT 125 OF.
5. REMOVE 1 TURNS FROM THE PRIMARY IF NECESSARY TO OBTAIN THE FOLLOWING AT TEST FREQ. OF 2.5 MHZ.
  - a) INDUCTANCE IN  $\mu$ H. 65  $\pm$  4
  - b) Q MINIMUM ---
6. MAXIMUM NUMBER OF TURNS TO BE REMOVED 1
7. MOUNT TRANSFORMER ON BASE & CONNECT WIRES TO CORRESPONDING PINS.
8. INSTALL ITEM 7 & 8 BETWEEN PINS 1 & 4.
9. INSTALL ITEM 3 & --- BETWEEN PINS 4 & 9.
10. INSTALL ITEM --- BETWEEN PINS --- & ---.
11. POT TRANSFORMER USING ITEM 6 AS PER SPEC. S10149.
12. COLOUR CODE BOTTOM OF TRANSFORMER BRN, RED, WHT.
13. INSTALL NAMEPLATE.



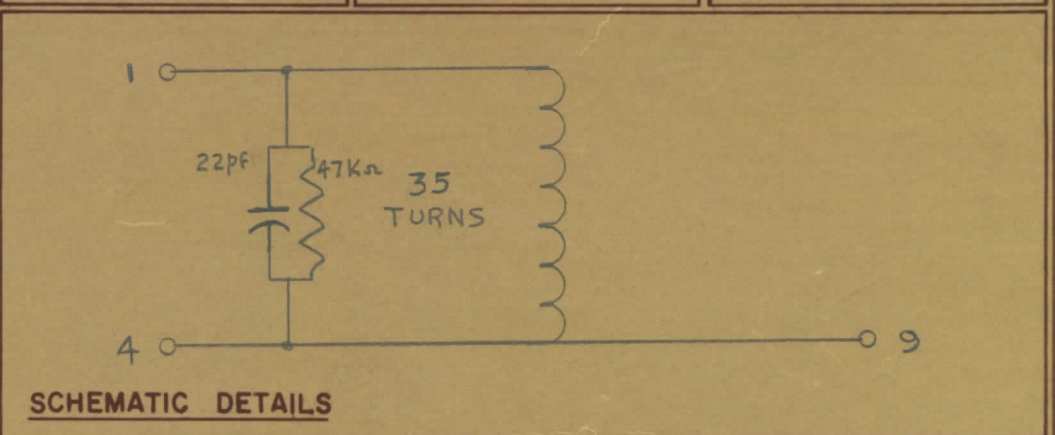
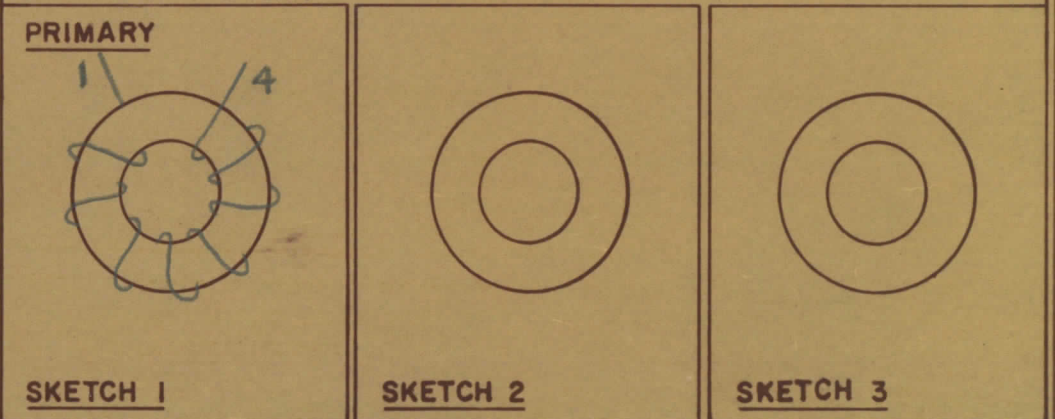
**COLOUR CODE MARKING**



TYPICAL FOR ALL SKETCHES

REQ	ITEM	PART NO.	DESCRIPTION	SYMBOL
1	1	BPI0011	COIL CASE ASSEMBLY	
1	2	CI-10011-1-Q1	CORE	
AR	3	WI-123-28	WIRE MAGNET	
1	4	NP 10157	NAMEPLATE	
AR	5	GL130	Q-DOPE	
AR	6	GL10005-3110 H	ENCAPSULANT	
1	7	RC07GF473J	RESISTOR, FIXED	
1	8	CK05BX220K	CAPACITOR, FIXED	
	9			
	10			
	11			
	12			

—: DIRECTION OF WINDING TO BE CLOSELY FOLLOWED AS SHOWN IN SKETCHES. ALL LEADS TO BE 1 INCH LONG. TIN LEADS BACK 3/4 INCH.



TOLERANCES UNLESS OTHERWISE SPECIFIED	SCALE
ALL OTHERS	
DEC DIM = .05	
FRAC DIM = 1/64	
ANGULAR DIM = 0°30'	
.XX = .01	
.XXX = .005	
DRILL, PUNCH, COMMERCIAL STOCK SIZES AND MANUFACTURERS TOLERANCES ARE NOT INCLUDED	

TTRR(1A)D	067/68	29 JAN 68
MODEL	PROJECT NO	ASSY NO
USED ON		

STOCK SIZE		TMC (Canada) LIMITED OTTAWA ONTARIO	
MATERIAL		TRANSFORMER RF,	
WEIGHT PER PC		TUNED	
TYPE & TEMPER		E.T.	<i>Judith</i>
HEAT TREAT SPEC		DRAWN	ELEC DES APP
FINISH & SPEC. NO		CHECKED	Mech DES APP
		FINAL APPROVAL	
		TT 10002-12A A	



IF IT IS FOUND DESIRABLE TO CHANGE ANY TOLERANCE OR OTHER DETAIL SPECIFIED ON THIS DRAWING NOTIFY THE PURCHASER PROMPTLY.

DIMENSIONS IN INCHES UNLESS OTHERWISE SPECIFIED

MAXIMUM ALLOWABLE TOLERANCES HAVE BEEN DETERMINED AND DEVIATIONS WILL BE CAUSE FOR REJECTION REMOVE ALL BURRS AND SHARP EDGES

ISSUE	ITEM	CHANGED FROM	DATE	CN NO	DRAFTS	CHECKER	ENG APP
0		REL. TO PROD.	JAN 30/68		RPL		<i>[Signature]</i>
A		REV. AS PER CEMN	DEC 7/72	1208	PVM		<i>[Signature]</i>

TT10002-12B A

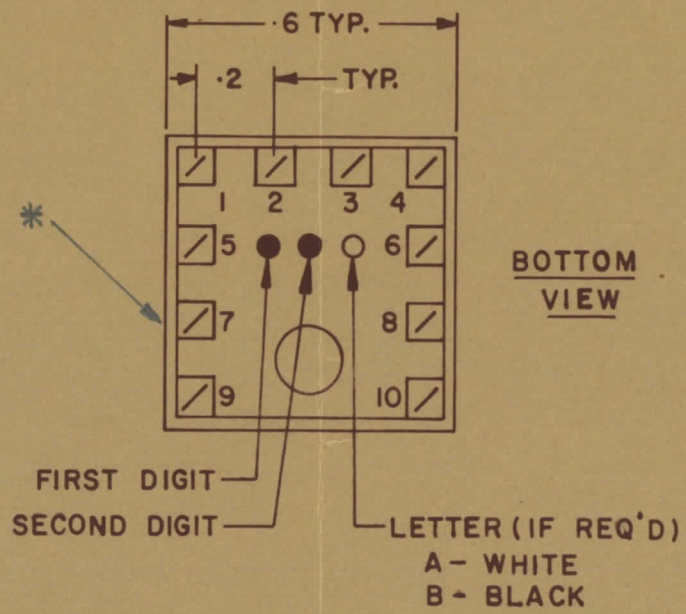
REQ	ITEM	PART NO	DESCRIPTION	SYMBOL
1	1	BPI0011	COIL CASE ASSEMBLY	
1	2	CI-10011-1-Q1	CORE	
AR	3	WI-123-2B	WIRE MAGNET	
1	4	NP 10157	NAMEPLATE	
AR	5	GL 130	Q-DOPE	
AR	6	GL 10005-3110 H	ENCAPSULANT	
1	7	RC07GF473J	RESISTOR, FIXED	
1	8	CK05B X220K	CAPACITOR, FIXED	
	9			
	10			
	11			
	12			

**NOTE:-**

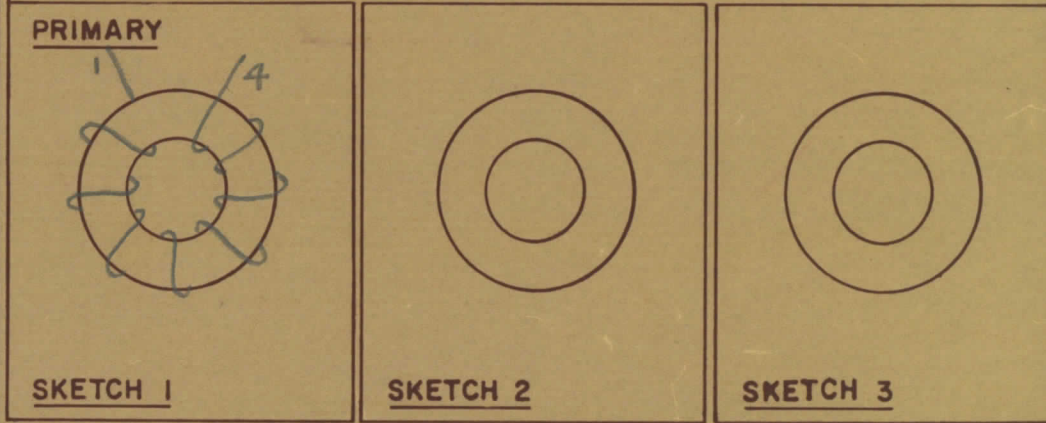
- 1- COLOUR CODE INDICATES LAST TWO DIGITS AND LETTER IN TMC PART NO.
- 2- \* -INDICATES POSITION OF NAMEPLATE.

**ASSEMBLY INSTRUCTIONS:-**

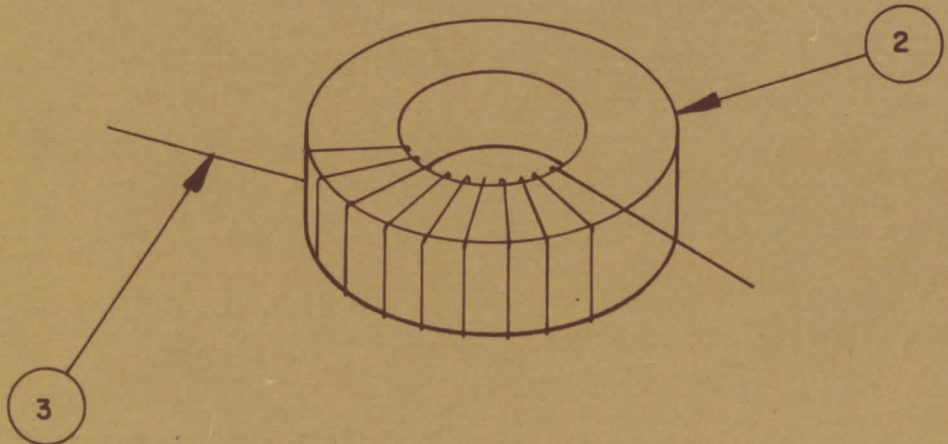
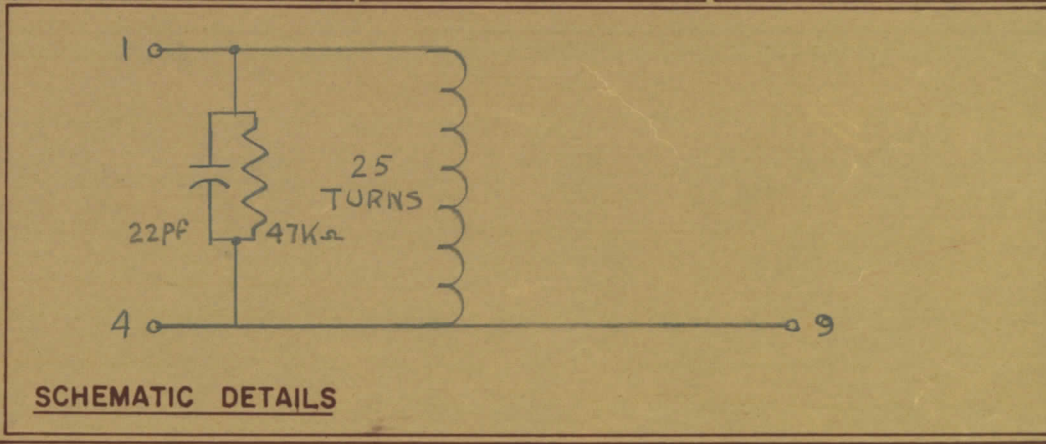
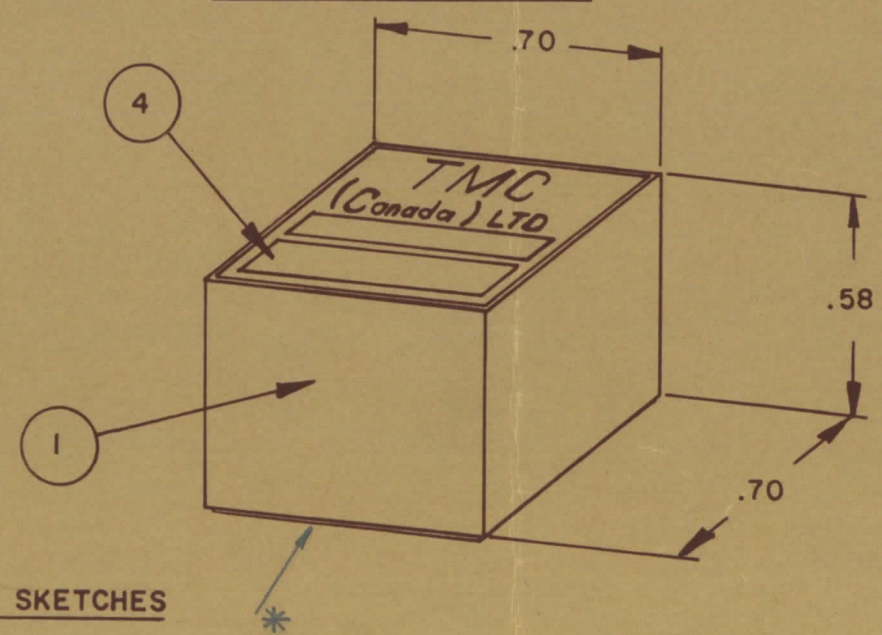
- WIND 25 TURNS OF ITEM 3 AS SHOWN IN SKETCH 1.
- WIND     TURNS OF ITEM     AS SHOWN IN SKETCH 2.
- WIND     TURNS OF ITEM     AS SHOWN IN SKETCH 3.
- DIP COIL IN ITEM 5 AND BAKE FOR 1/2 HR. AT 125 °F.
- REMOVE 1 TURNS FROM THE PRIMARY IF NECESSARY TO OBTAIN THE FOLLOWING AT TEST FREQ. OF 2.5 MHZ.
  - a) INDUCTANCE IN  $\mu$ H. 30  $\pm$  3
  - b) Q MINIMUM
- MAXIMUM NUMBER OF TURNS TO BE REMOVED 1
- MOUNT TRANSFORMER ON BASE & CONNECT WIRES TO CORRESPONDING PINS.
- INSTALL ITEM 7 & 8 BETWEEN PINS 1 & 4.
- INSTALL ITEM     &     BETWEEN PINS     &    .
- INSTALL ITEM 3 BETWEEN PINS 4 & 9.
- POT TRANSFORMER USING ITEM 6 AS PER SPEC. S10149.
- COLOUR CODE BOTTOM OF TRANSFORMER BRN, RED, BLK.
- INSTALL NAMEPLATE.



-:DIRECTION OF WINDING TO BE CLOSELY FOLLOWED AS SHOWN IN SKETCHES. ALL LEADS TO BE 1 INCH LONG. TIN LEADS BACK 3/4 INCH.



**COLOUR CODE MARKING**



TYPICAL FOR ALL SKETCHES

TOLERANCES UNLESS OTHERWISE SPECIFIED	SCALE
ALL OTHERS	
DEC DIM - 1/64	X = .05
FRAC DIM - 64	XX = .01
ANGULAR DIM - 0°30'	XXX = .005
DRILL, PUNCH, COMMERCIAL STOCK SIZES AND MANUFACTURERS TOLERANCES ARE NOT INCLUDED	

MODEL	PROJECT NO	ASSY NO	DATE
TTRR(1B)D	067/68		29 JAN 68
USED ON			

STOCK SIZE		TMC (Canada) LIMITED OTTAWA ONTARIO	
MATERIAL		TRANSFORMER RF,	
WEIGHT PER PC		TUNED	
TYPE & TEMPER		E.T.	<i>[Signature]</i>
HEAT TREAT SPEC		DRAWN	<i>[Signature]</i>
		RPC	<i>[Signature]</i>
		CHECKED	<i>[Signature]</i>
		FINAL APPROVAL	
FINISH & SPEC NO		TT10002-12B A	



IF IT IS FOUND DESIRABLE TO CHANGE ANY TOLERANCE OR OTHER DETAIL SPECIFIED ON THIS DRAWING NOTIFY THE PURCHASER PROMPTLY

DIMENSIONS IN INCHES UNLESS OTHERWISE SPECIFIED

MAXIMUM ALLOWABLE TOLERANCES HAVE BEEN DETERMINED AND DEVIATIONS WILL BE CAUSE FOR REJECTION REMOVE ALL BURRS AND SHARP EDGES

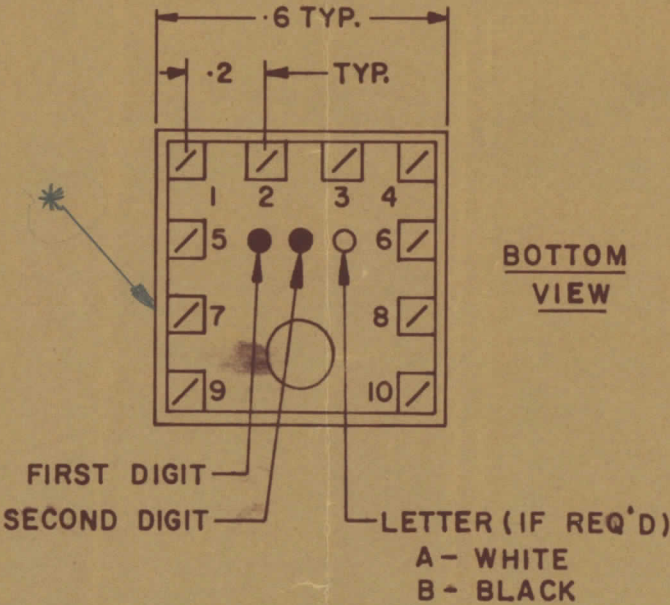
ISSUE	ITEM	CHANGED FROM	DATE	CN NO	DRAFTS	CHECKER	ENG APP
Ø		REL. TO PROD.	JAN 30/68		RPL		N
A		REV. AS PER CEMN	DEC 7/72	1208	PVM		SDW

TT100002-13A A

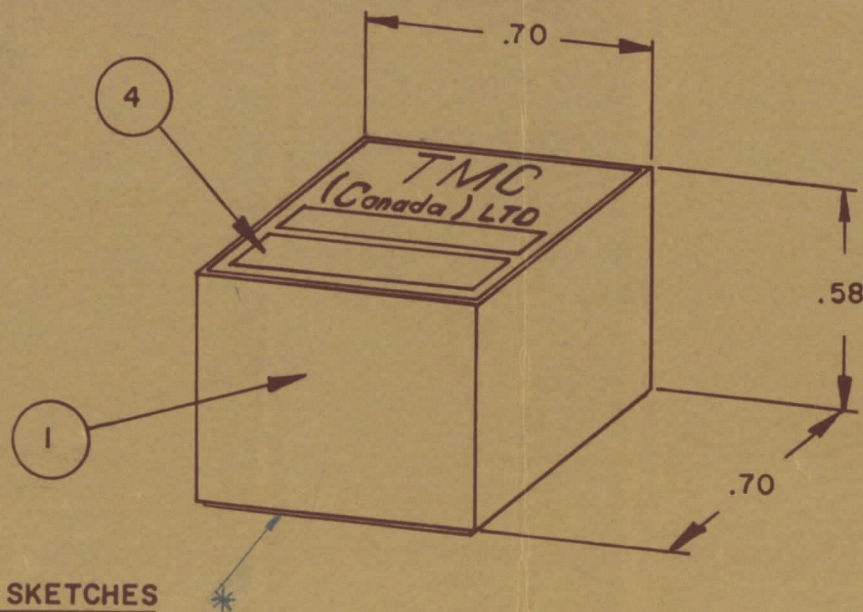
**NOTE:-**  
 1- COLOUR CODE INDICATES LAST TWO DIGITS AND LETTER IN TMC PART NO.  
 2- \* -INDICATES POSITION OF NAMEPLATE.

**ASSEMBLY INSTRUCTIONS:-**

- WIND 35 TURNS OF ITEM 3 AS SHOWN IN SKETCH 1.
- WIND     TURNS OF ITEM     AS SHOWN IN SKETCH 2.
- WIND     TURNS OF ITEM     AS SHOWN IN SKETCH 3.
- DIP COIL IN ITEM 5 AND BAKE FOR 1/2 HR. AT 125 °F.
- REMOVE 1 TURNS FROM THE PRIMARY IF NECESSARY TO OBTAIN THE FOLLOWING AT TEST FREQ. OF 2.5 MHZ.
  - INDUCTANCE IN  $\mu$ H. 65  $\pm$  4
  - Q MINIMUM
- MAXIMUM NUMBER OF TURNS TO BE REMOVED 1
- MOUNT TRANSFORMER ON BASE & CONNECT WIRES TO CORRESPONDING PINS.
- INSTALL ITEM     &     BETWEEN PINS     &    .
- INSTALL ITEM 7 &     BETWEEN PINS 1 & 9.
- INSTALL ITEM 3 BETWEEN PINS 2 & 9.
- POT TRANSFORMER USING ITEM 6 AS PER SPEC. S10149.
- COLOUR CODE BOTTOM OF TRANSFORMER BRN, ORN, WHT.
- INSTALL NAMEPLATE.



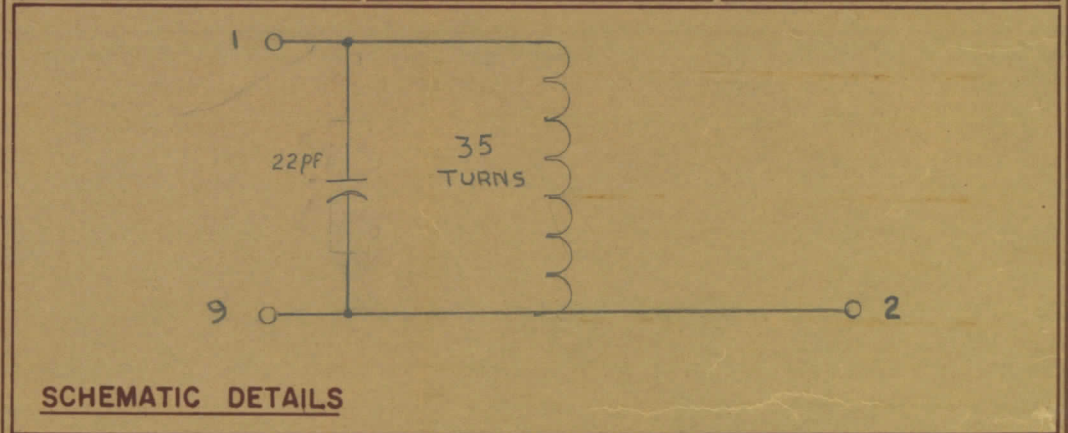
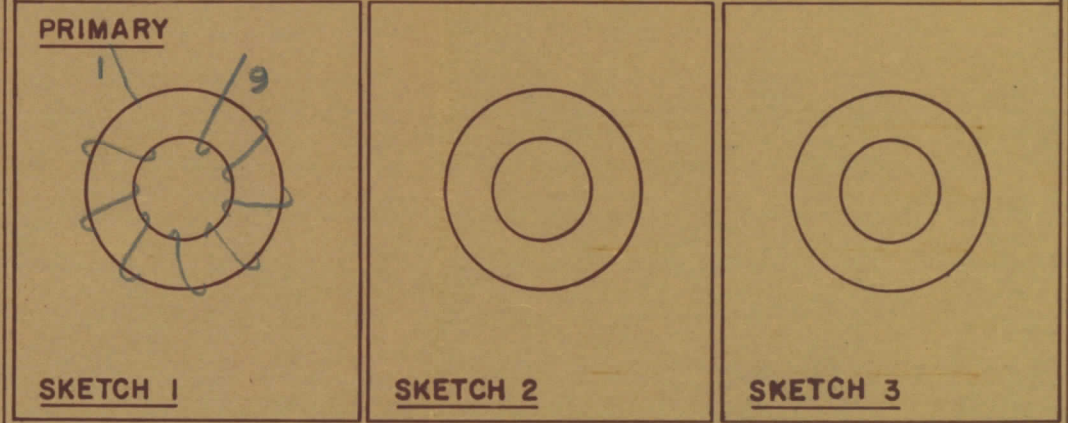
**COLOUR CODE MARKING**



TYPICAL FOR ALL SKETCHES

REQ	ITEM	PART NO	DESCRIPTION	SYMBOL
1	1	BPI0011	COIL CASE ASSEMBLY	
1	2	CI-10011-1-Q1	CORE	
AR	3	WI-123-28	WIRE MAGNET	
1	4	NP10157	NAMEPLATE	
AR	5	GL130	Q-DOPE	
AR	6	GL10005-3110 H	ENCAPSULANT	
1	7	CK05Bx220K	CAPACITOR FIXED	
	8			
	9			
	10			
	11			
	12			

:-DIRECTION OF WINDING TO BE CLOSELY FOLLOWED AS SHOWN IN SKETCHES. ALL LEADS TO BE 1 INCH LONG. TIN LEADS BACK 3/4 INCH.



TOLERANCES UNLESS OTHERWISE SPECIFIED	SCALE	DRILL, PUNCH, COMMERCIAL STOCK SIZES AND MANUFACTURERS TOLERANCES ARE NOT INCLUDED
ALL OTHERS	DEC DIM - 1/64 FRAC DIM - 1/64 ANGULAR DIM - 0°30'	.X = .05 .XX = .01 .XXX = .005

MODEL	PROJECT NO	ASSY NO	DATE
TTRR(1A)D	067/68		29 JAN 68

**TMC (Canada) LIMITED**  
 OTTAWA ONTARIO

TRANSFORMER RF,  
 TUNED.

E.T. DRAWN  
 RPL CHECKED

FINAL APPROVAL  
 [Signature]

TT10002-13A A



IF IT IS FOUND DESIRABLE TO CHANGE ANY TOLERANCE OR OTHER DETAIL SPECIFIED ON THIS DRAWING NOTIFY THE PURCHASER PROMPTLY

MAXIMUM ALLOWABLE TOLERANCES HAVE BEEN DETERMINED AND DEVIATIONS WILL BE CAUSE FOR REJECTION REMOVE ALL BURRS AND SHARP EDGES

DIMENSIONS IN INCHES UNLESS OTHERWISE SPECIFIED

ISSUE	ITEM	CHANGED FROM	DATE	CN NO	DRAFTS	CHECKER	ENG APP
0		REL. TO PROD.	JAN 30/68		RPL		
A		REV. AS PER CEMN	DEC 7/72	1208	PVM		

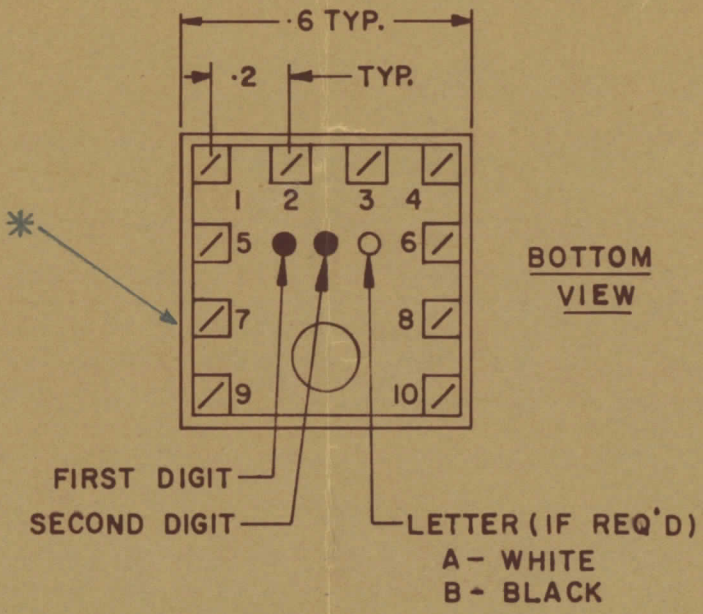
TT10002-13B A

**NOTE:-**

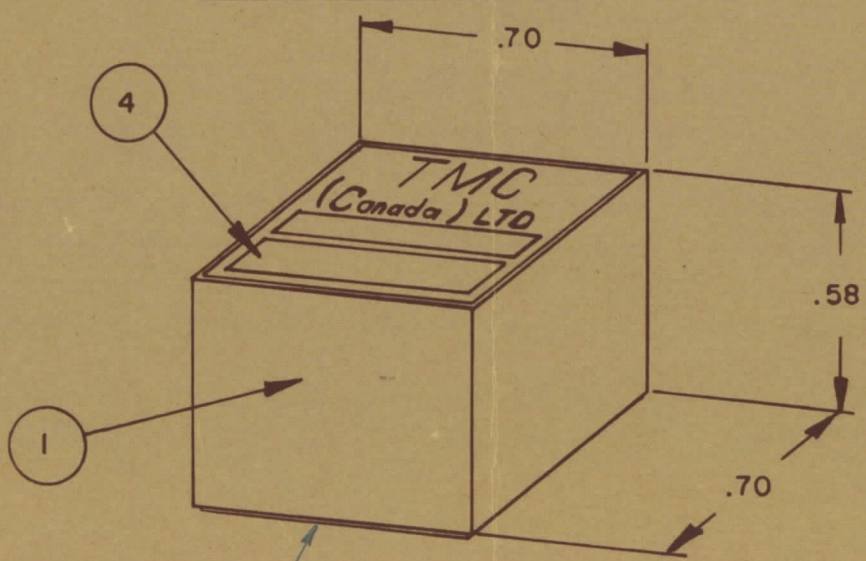
- 1- COLOUR CODE INDICATES LAST TWO DIGITS AND LETTER IN TMC PART NO.
- 2- \* -INDICATES POSITION OF NAMEPLATE.

**ASSEMBLY INSTRUCTIONS:-**

1. WIND 25 TURNS OF ITEM 3 AS SHOWN IN SKETCH 1.
2. WIND      TURNS OF ITEM      AS SHOWN IN SKETCH 2.
3. WIND      TURNS OF ITEM      AS SHOWN IN SKETCH 3.
4. DIP COIL IN ITEM 5 AND BAKE FOR 1/2 HR. AT 125 OF.
5. REMOVE 1 TURNS FROM THE PRIMARY IF NECESSARY TO OBTAIN THE FOLLOWING AT TEST FREQ. OF 2.5 MHZ.
  - a) INDUCTANCE IN  $\mu$ H. 30  $\pm$  3.
  - b) Q MINIMUM     .
6. MAXIMUM NUMBER OF TURNS TO BE REMOVED 1.
7. MOUNT TRANSFORMER ON BASE & CONNECT WIRES TO CORRESPONDING PINS.
8. INSTALL ITEM 7 & 8 BETWEEN PINS 1 & 9.
9. INSTALL ITEM 8 &      BETWEEN PINS 8 &     .
10. INSTALL ITEM 3 BETWEEN PINS 2 & 9.
11. POT TRANSFORMER USING ITEM 6 AS PER SPEC. S10149.
12. COLOUR CODE BOTTOM OF TRANSFORMER BRN, ORN, BLK.
13. INSTALL NAMEPLATE.



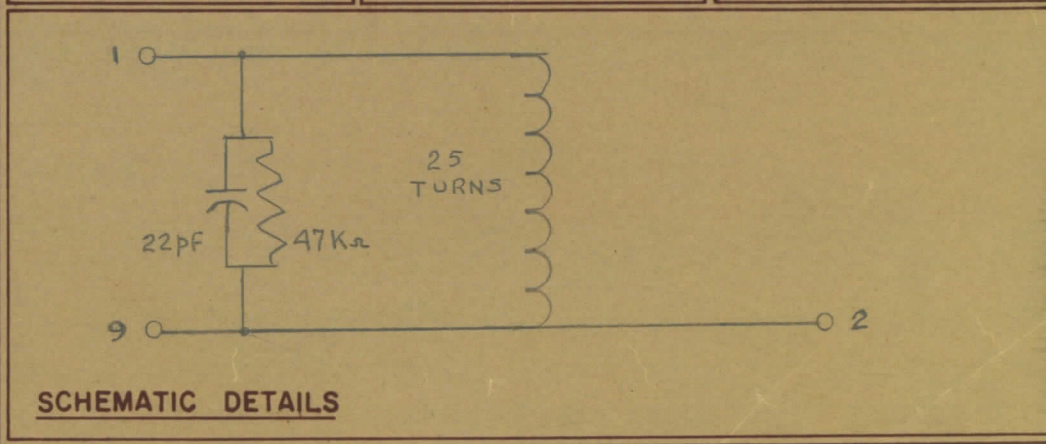
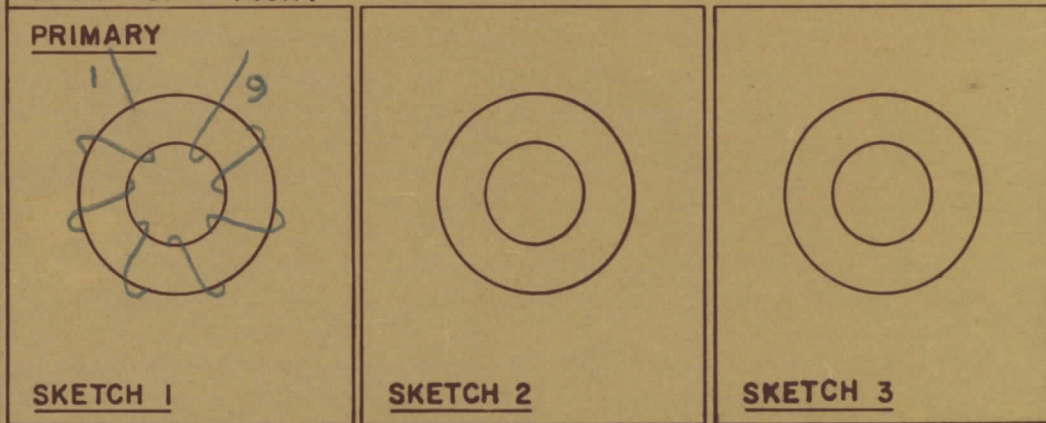
**COLOUR CODE MARKING**



TYPICAL FOR ALL SKETCHES

REQ	ITEM	PART NO	DESCRIPTION	SYMBOL
1	1	BPI0011	COIL CASE ASSEMBLY	
1	2	CI-10011-1-Q1	CORE	
AR	3	WI-123-28	WIRE MAGNET	
1	4	NP 10157	NAMEPLATE	
AR	5	GL 130	Q-DOPE	
AR	6	GL 10005-3110 H	ENCAPSULANT	
1	7	RC07GF473J	RESISTOR, FIXED	
1	8	CK05B x220K	CAPACITOR, FIXED	
	9			
	10			
	11			
	12			

—: DIRECTION OF WINDING TO BE CLOSELY FOLLOWED AS SHOWN IN SKETCHES. ALL LEADS TO BE 1 INCH LONG. TIN LEADS BACK 3/4 INCH.



TOLERANCES UNLESS OTHERWISE SPECIFIED	SCALE
ALL OTHERS	
DEC DIM	.X = .05
FRAC DIM	.XX = .01
ANGULAR DIM	.XXX = .005
	DRILL, PUNCH, COMMERCIAL STOCK SIZES AND MANUFACTURERS TOLERANCES ARE NOT INCLUDED

TTRR(1B)D	067/68	29 JAN 68
MODEL	PROJECT NO	ASSY NO
USED ON		

**TMC (Canada) LIMITED**  
OTTAWA ONTARIO

TRANSFORMER RF, TUNED

E.T. DRAWN  
RPL CHECKED

FINAL APPROVAL

TT10002-13B A



IF IT IS FOUND DESIRABLE TO CHANGE ANY TOLERANCE OR OTHER DETAIL SPECIFIED ON THIS DRAWING NOTIFY THE PURCHASER PROMPTLY

DIMENSIONS IN INCHES UNLESS OTHERWISE SPECIFIED

MAXIMUM ALLOWABLE TOLERANCES HAVE BEEN DETERMINED AND DEVIATIONS WILL BE CAUSE FOR REJECTION REMOVE ALL BURRS AND SHARP EDGES

ISSUE	ITEM	CHANGED FROM	DATE	CN NO	DRAFTS	CHECKER	ENG APP
0		REL. TO. PROD.	JAN 30/68		RPL		
A		REV. AS PER CEMN	DEC 7/72	1208	PVM		

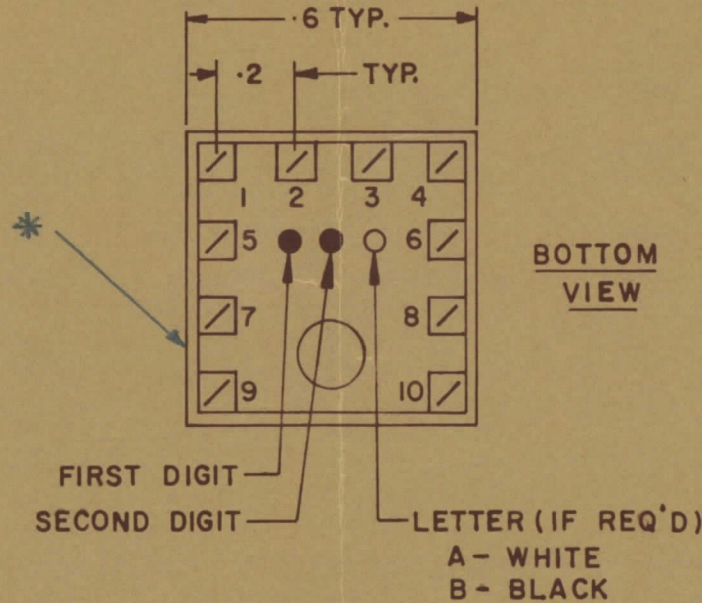
TT10002-21A A

**NOTE:-**

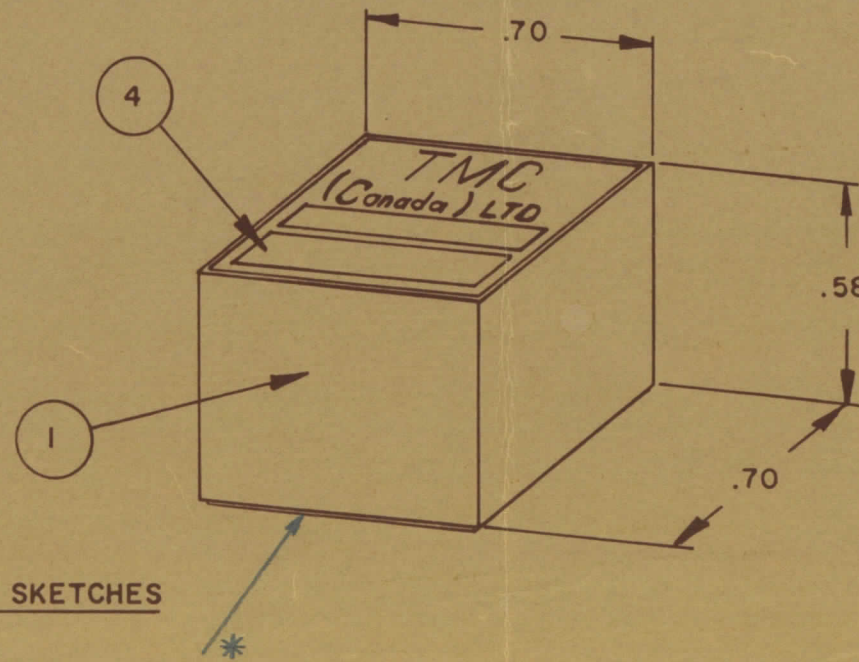
- 1- COLOUR CODE INDICATES LAST TWO DIGITS AND LETTER IN TMC PART NO.
- 2- \* -INDICATES POSITION OF NAMEPLATE.

**ASSEMBLY INSTRUCTIONS:-**

1. WIND 17 TURNS OF ITEM 3 AS SHOWN IN SKETCH 1.
2. WIND 4 TURNS OF ITEM 7 AS SHOWN IN SKETCH 2.
3. WIND        TURNS OF ITEM        AS SHOWN IN SKETCH 3.
4. DIP COIL IN ITEM 5 AND BAKE FOR 1/2 HR. AT 125 °F.
5. REMOVE 1 TURNS FROM THE PRIMARY IF NECESSARY TO OBTAIN THE FOLLOWING AT TEST FREQ. OF 2.5 MHZ.
  - a) INDUCTANCE IN  $\mu$ H. 15  $\pm$  1.5
  - b) Q MINIMUM
6. MAXIMUM NUMBER OF TURNS TO BE REMOVED 1
7. MOUNT TRANSFORMER ON BASE & CONNECT WIRES TO CORRESPONDING PINS.
8. INSTALL ITEM 8 BETWEEN PINS 8 &       .
9. INSTALL ITEM 8 BETWEEN PINS 8 &       .
10. INSTALL ITEM 8 BETWEEN PINS 9 & 10.
11. POT TRANSFORMER USING ITEM 6 AS PER SPEC. S10149.
12. COLOUR CODE BOTTOM OF TRANSFORMER RED, BRN, WHT.
13. INSTALL NAMEPLATE.



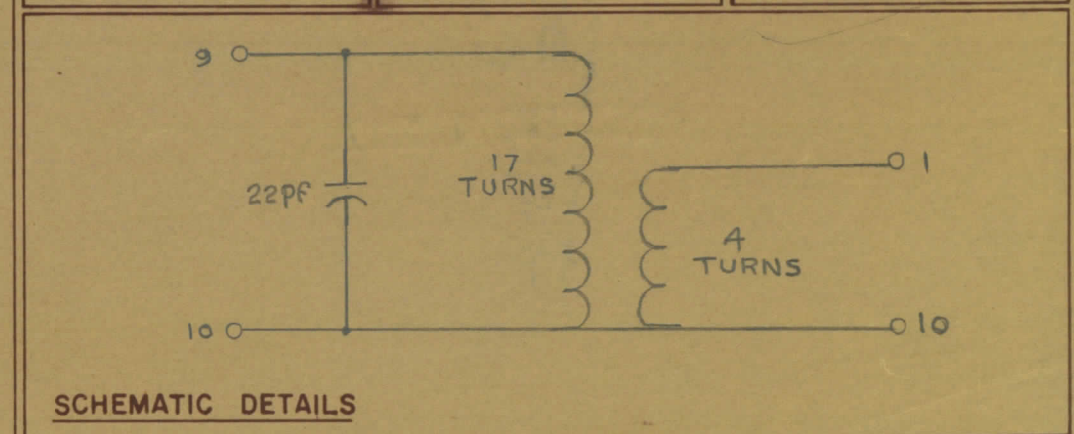
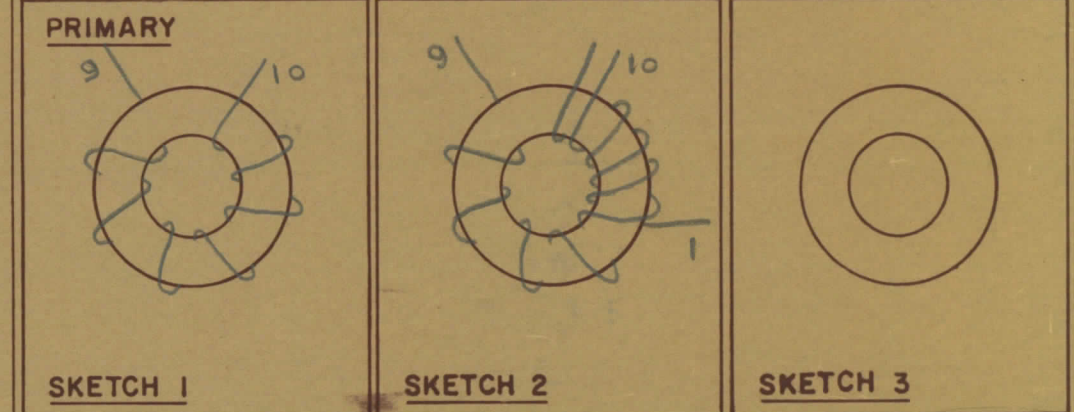
**COLOUR CODE MARKING**



TYPICAL FOR ALL SKETCHES

REQ	ITEM	PART NO	DESCRIPTION	SYMBOL
1	1	BPI0011	COIL CASE ASSEMBLY	
1	2	CI-10011-1-Q1	CORE	
AR	3	WI-123-28	WIRE MAGNET	
1	4	NP 10157	NAMEPLATE	
AR	5	GL 130	Q-DOPE	
AR	6	GL 10005-3110 H	ENCAPSULANT	
AR	7	WI-122-30	WIRE MAGNET	
1	8	CK05BX220K	CAPACITOR, FIXED	
	9			
	10			
	11			
	12			

—: DIRECTION OF WINDING TO BE CLOSELY FOLLOWED AS SHOWN IN SKETCHES. ALL LEADS TO BE 1 INCH LONG. TIN LEADS BACK 3/4 INCH.



**TMC (Canada) LIMITED**  
OTTAWA ONTARIO

**TRANSFORMER RF, TUNED.**

STOCK SIZE: \_\_\_\_\_  
MATERIAL: \_\_\_\_\_ WEIGHT PER PC: \_\_\_\_\_  
TYPE & TEMPER: \_\_\_\_\_  
HEAT TREAT SPEC: \_\_\_\_\_  
FINISH & SPEC NO: \_\_\_\_\_

DRAWN: **E.T.**  
CHECKED: **RPL**

ELEC. DES. APP: *[Signature]*  
MECH. DES. APP: *[Signature]*  
FINAL APPROVAL: *[Signature]*

MODEL: **TTRR(2A)D** PROJECT NO: **067/68** ASSY NO: \_\_\_\_\_ DATE: **29 JAN 68**

TT10002-21A A

TOLERANCES UNLESS OTHERWISE SPECIFIED	SCALE
ALL DEC DIM: .X = .05 OTHERS: .XX = .01 ANGULAR DIM: 0°30'	DRILL, PUNCH, COMMERCIAL STOCK SIZES AND MANUFACTURERS TOLERANCES ARE NOT INCLUDED



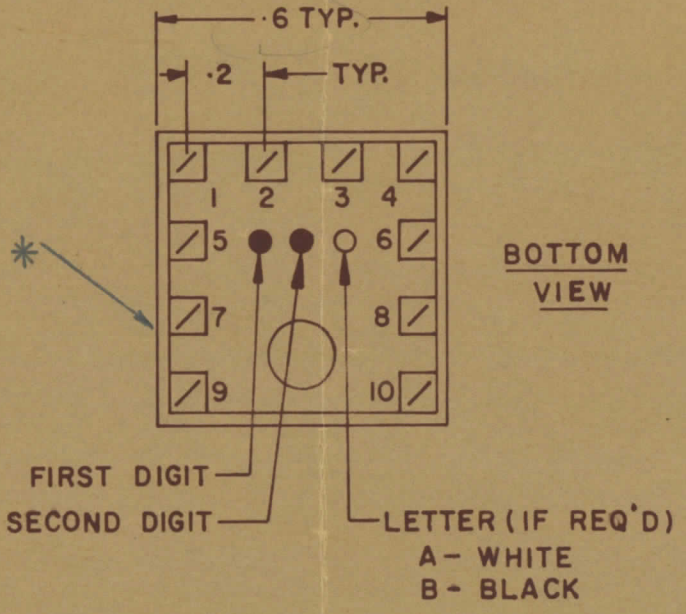
IF IT IS FOUND DESIRABLE TO CHANGE ANY TOLERANCE OR OTHER DETAIL SPECIFIED ON THIS DRAWING NOTIFY THE PURCHASER PROMPTLY				DIMENSIONS IN INCHES UNLESS OTHERWISE SPECIFIED			
MAXIMUM ALLOWABLE TOLERANCES HAVE BEEN DETERMINED AND DEVIATIONS WILL BE CAUSE FOR REJECTION REMOVE ALL BURRS AND SHARP EDGES				OTHERWISE SPECIFIED			
ISSUE	ITEM	CHANGED FROM	DATE	CN NO	DRAFTS	CHECKER	ENG APP
0		REL. TO PROD.	JAN 30/67		RPL		[Signature]
A		REV. AS PER CEMN	DEC 7/72	1203	PVM		[Signature]

TT10002-21B A

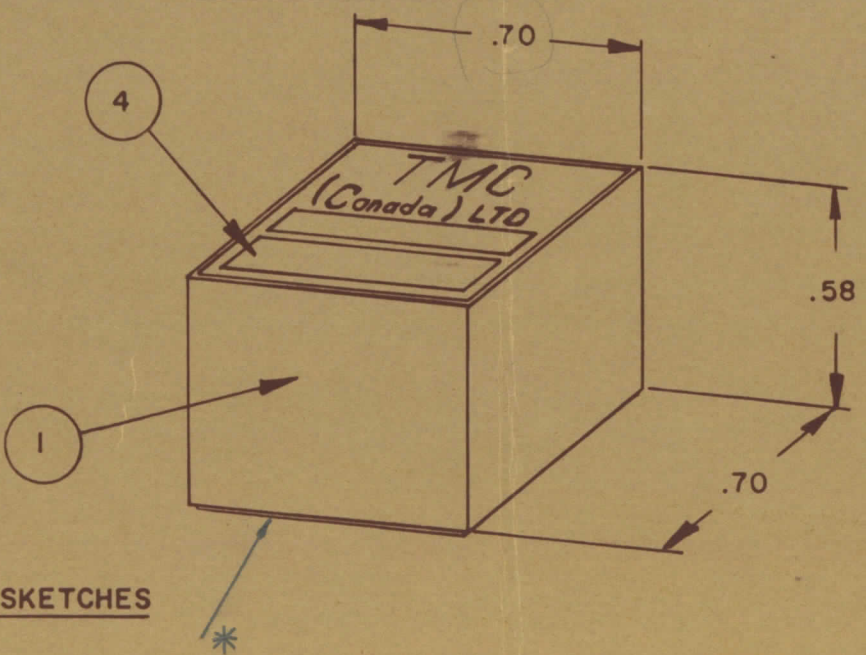
**NOTE:-**  
 1- COLOUR CODE INDICATES LAST TWO DIGITS AND LETTER IN TMC PART NO.  
 2- \* -INDICATES POSITION OF NAMEPLATE.

**ASSEMBLY INSTRUCTIONS:-**

- WIND 10 TURNS OF ITEM 3 AS SHOWN IN SKETCH 1.
- WIND 3 TURNS OF ITEM 8 AS SHOWN IN SKETCH 2.
- WIND --- TURNS OF ITEM --- AS SHOWN IN SKETCH 3.
- DIP COIL IN ITEM 5 AND BAKE FOR 1/2 HR. AT 125 °F.
- REMOVE 1 TURNS FROM THE PRIMARY IF NECESSARY TO OBTAIN THE FOLLOWING AT TEST FREQ. OF 7.9 MHZ.
  - INDUCTANCE IN  $\mu$ H. 6.8  $\pm$  1.2
  - Q MINIMUM ---
- MAXIMUM NUMBER OF TURNS TO BE REMOVED 1
- MOUNT TRANSFORMER ON BASE & CONNECT WIRES TO CORRESPONDING PINS.
- INSTALL ITEM --- & --- BETWEEN PINS --- & ---.
- INSTALL ITEM --- & --- BETWEEN PINS --- & ---.
- INSTALL ITEM 7 BETWEEN PINS 9 & 10.
- POT TRANSFORMER USING ITEM 6 AS PER SPEC. S10149.
- COLOUR CODE BOTTOM OF TRANSFORMER RED, BRN, BLK.
- INSTALL NAMEPLATE.



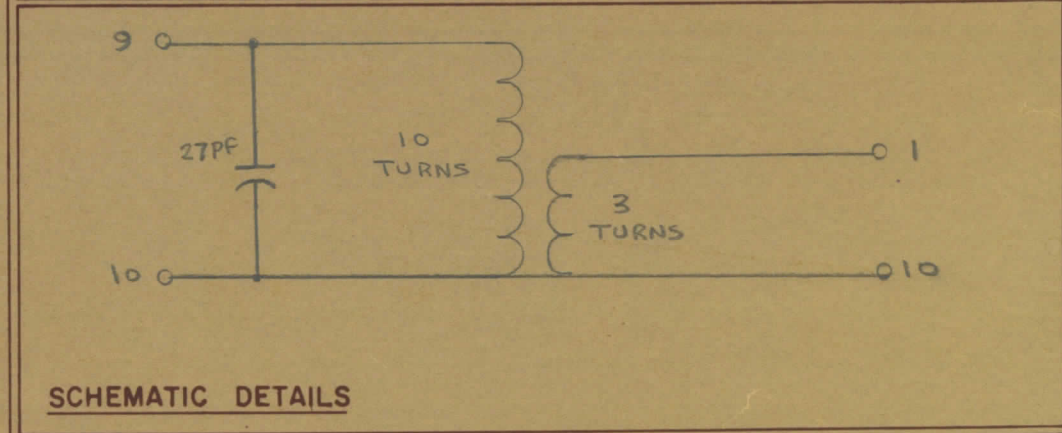
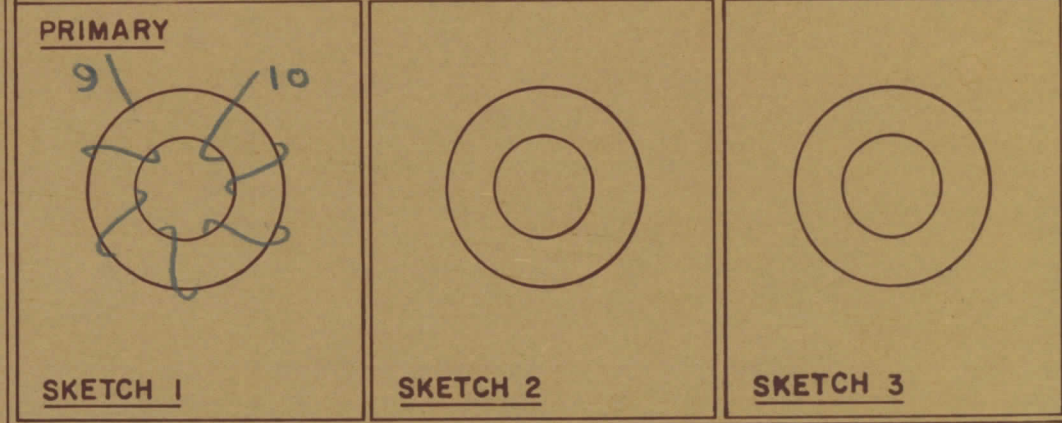
**COLOUR CODE MARKING**



TYPICAL FOR ALL SKETCHES

REQ	ITEM	PART NO.	DESCRIPTION	SYMBOL
1	1	BPI0011	COIL CASE ASSEMBLY	
1	2	CI-10011-1-Q1	CORE	
AR	3	WI-123-28	WIRE MAGNET	
1	4	NP 10157	NAMEPLATE	
AR	5	GL 130	Q-DOPE	
AR	6	GL 10005-3110 H	ENCAPSULANT	
1	7	CK05B x 270K	CAPACITOR, FIXED	
AR	8	WI-122-30	WIRE MAGNET	
	9			
	10			
	11			
	12			

DIRECTION OF WINDING TO BE CLOSELY FOLLOWED AS SHOWN IN SKETCHES. ALL LEADS TO BE 1 INCH LONG. TIN LEADS BACK 3/4 INCH.



TOLERANCES UNLESS OTHERWISE SPECIFIED	SCALE
ALL OTHERS	
DEC DIM	.X = .05
FRAC DIM	.XX = .01
ANGULAR DIM	.XXX = .005
	DRILL, PUNCH, COMMERCIAL STOCK SIZES AND MANUFACTURERS TOLERANCES ARE NOT INCLUDED

TTRR (2B)D	067/68	29 JAN 68
MODEL	PROJECT NO	ASSY NO
USED ON		

**TMC (Canada) LIMITED**  
 OTTAWA ONTARIO

TRANSFORMER RF,  
 TUNED

E.T. [Signature]  
 DRAWN  
 RPL [Signature]  
 CHECKED

[Signature]  
 ELEC. DES. APP.  
 [Signature]  
 MECH. DES. APP.

[Signature]  
 FINAL APPROVAL

TT 10002-21B A



IF IT IS FOUND DESIRABLE TO CHANGE ANY TOLERANCE OR OTHER DETAIL SPECIFIED ON THIS DRAWING NOTIFY THE PURCHASER PROMPTLY					DIMENSIONS IN INCHES UNLESS OTHERWISE SPECIFIED		
MAXIMUM ALLOWABLE TOLERANCES HAVE BEEN DETERMINED AND DEVIATIONS WILL BE CAUSE FOR REJECTION REMOVE ALL BURRS AND SHARP EDGES					OTHERWISE SPECIFIED		
ISSUE	ITEM	CHANGED FROM	DATE	CN NO	DRAFTS	CHECKER	ENG APP
Ø		REL. TO PROD	JAN 30/68		RPL		[Signature]
A		REV. AS PER CEMN	DEC 7/72	1208	PVM		[Signature]

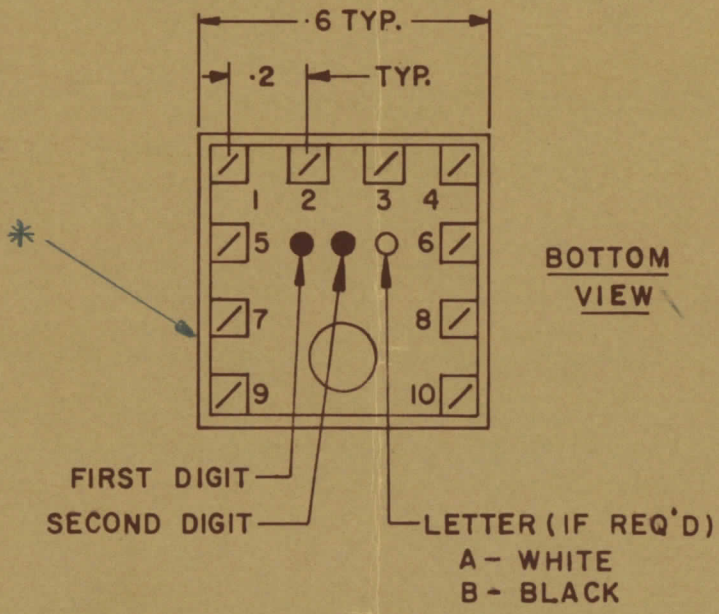
TT10002-22A A

REQ	ITEM	PART NO	DESCRIPTION	SYMBOL
1	1	BPI0011	COIL CASE ASSEMBLY	
1	2	CI-10011-1-Q1	CORE	
AR	3	WI-123-28	WIRE MAGNET	
1	4	NP 10157	NAMEPLATE	
AR	5	GL 130	Q-DOPE	
AR	6	GL 10005-3110 H	ENCAPSULANT	
1	7	RC07GF273J	RESISTOR, FIXED	
1	8	CK05BX100K	CAPACITOR, FIXED	
1	9	CM10002-C-050K	CAPACITOR, FIXED	
	10			
	11			
	12			

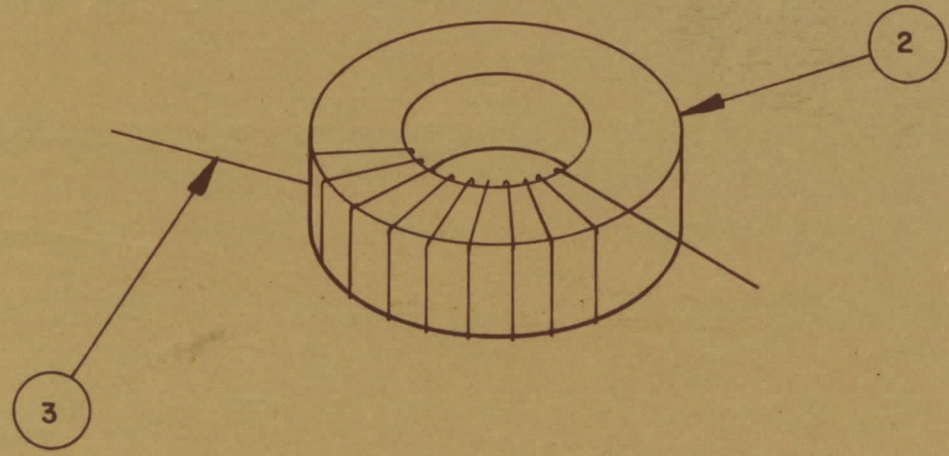
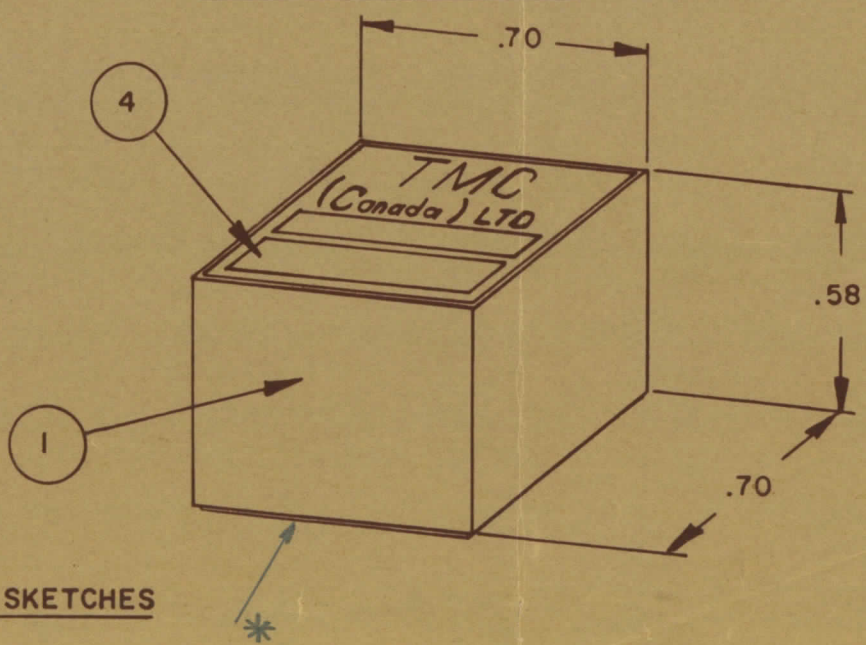
**ASSEMBLY INSTRUCTIONS:-**

- WIND 17 TURNS OF ITEM 3 AS SHOWN IN SKETCH 1.
- WIND      TURNS OF ITEM      AS SHOWN IN SKETCH 2.
- WIND      TURNS OF ITEM      AS SHOWN IN SKETCH 3.
- DIP COIL IN ITEM 5 AND BAKE FOR 1/2 HR. AT 125 OF.
- REMOVE 1 TURNS FROM THE PRIMARY IF NECESSARY TO OBTAIN THE FOLLOWING AT TEST FREQ. OF 2.5 MHZ.
  - INDUCTANCE IN  $\mu$ H. 15  $\pm$  1.5
  - Q MINIMUM
- MAXIMUM NUMBER OF TURNS TO BE REMOVED 1
- MOUNT TRANSFORMER ON BASE & CONNECT WIRES TO CORRESPONDING PINS.
- INSTALL ITEM 7 & 8 BETWEEN PINS 1 & 4.
- INSTALL ITEM 9 &      BETWEEN PINS 4 & 10.
- INSTALL ITEM 3 BETWEEN PINS 4 & 9.
- POT TRANSFORMER USING ITEM 6 AS PER SPEC. S 10149.
- COLOUR CODE BOTTOM OF TRANSFORMER RED, RED, WHT.
- INSTALL NAMEPLATE.

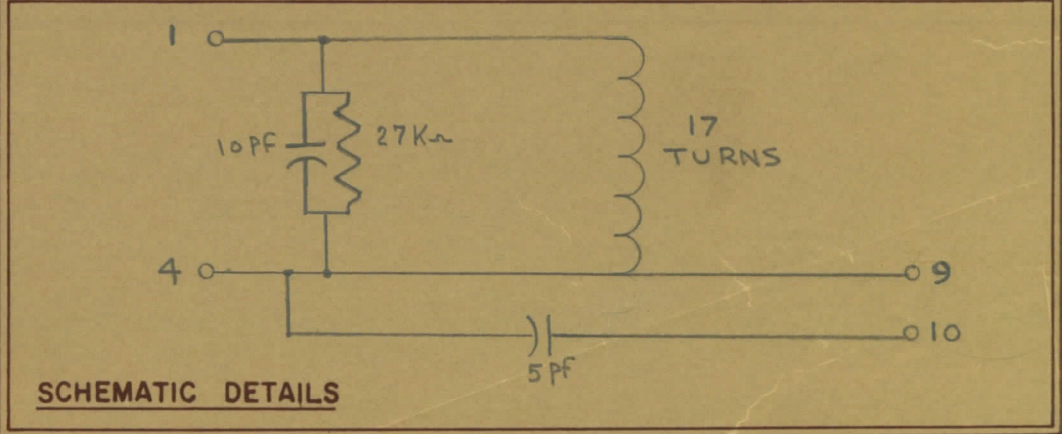
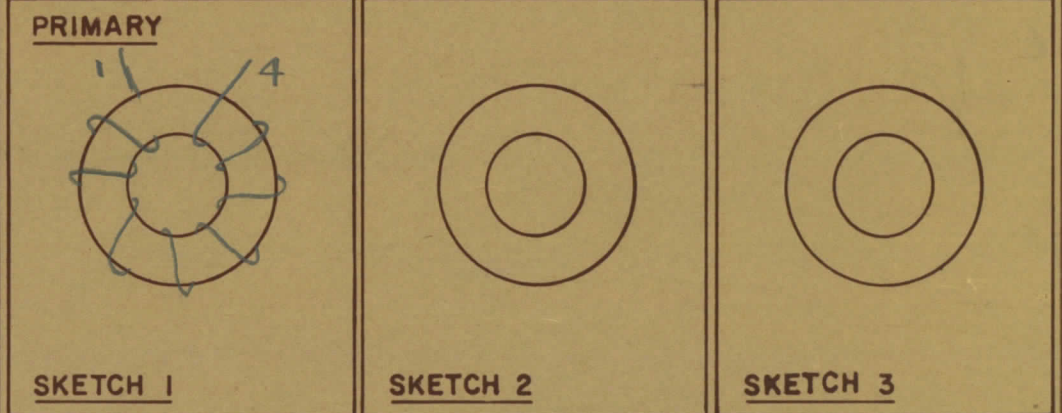
**NOTE:-**  
 1- COLOUR CODE INDICATES LAST TWO DIGITS AND LETTER IN TMC PART NO.  
 2- \* -INDICATES POSITION OF NAMEPLATE.



**COLOUR CODE MARKING**



DIRECTION OF WINDING TO BE CLOSELY FOLLOWED AS SHOWN IN SKETCHES. ALL LEADS TO BE 1 INCH LONG. TIN LEADS BACK 3/4 INCH.



TYPICAL FOR ALL SKETCHES

TOLERANCES UNLESS OTHERWISE SPECIFIED	SCALE
ALL OTHERS	
DEC DIM - 1/64	X = .05
ANGULAR DIM - 0°30'	XX = .01
	.XXX = .005
DRILL, PUNCH, COMMERCIAL STOCK	SIZES AND MANUFACTURERS
TOLERANCES ARE NOT INCLUDED	

MODEL	PROJECT NO	ASSY. NO	DATE
TTRR(2A)D	067/68		29 JAN 68
USED ON			

**TMC (Canada) LIMITED**  
 OTTAWA ONTARIO

**TRANSFORMER RF, TUNED**

STOCK SIZE	
MATERIAL	WEIGHT PER PC
TYPE & TEMPER	
HEAT TREAT SPEC	
FINISH & SPEC NO	

DRAWN: E.T.  
 CHECKED: RPL  
 ELEC DES APP: [Signature]  
 MECH DES APP: [Signature]  
 FINAL APPROVAL: [Signature]

TT10002-22A A



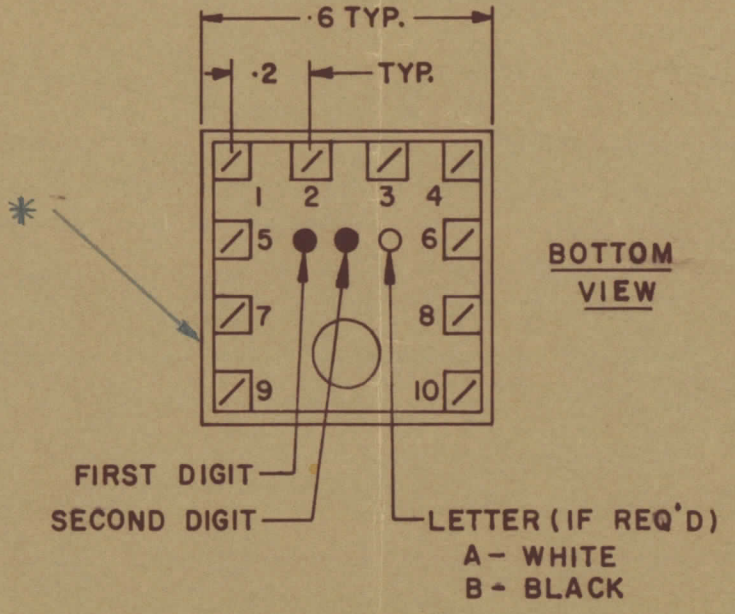
IF IT IS FOUND DESIRABLE TO CHANGE ANY TOLERANCE OR OTHER DETAIL SPECIFIED ON THIS DRAWING NOTIFY THE PURCHASER PROMPTLY.				DIMENSIONS IN INCHES UNLESS OTHERWISE SPECIFIED			
MAXIMUM ALLOWABLE TOLERANCES HAVE BEEN DETERMINED AND DEVIATIONS WILL BE CAUSE FOR REJECTION REMOVE ALL BURRS AND SHARP EDGES				OTHERWISE SPECIFIED			
ISSUE	ITEM	CHANGED FROM	DATE	CN NO	DRAFTS	CHECKER	ENG. APP.
Ø		REL. TO PROD.	JAN 30/68		RPL		[Signature]
A		REV. AS PER CEMN	DEC 7/72	1208	PVM		[Signature]

TT10002-22B A

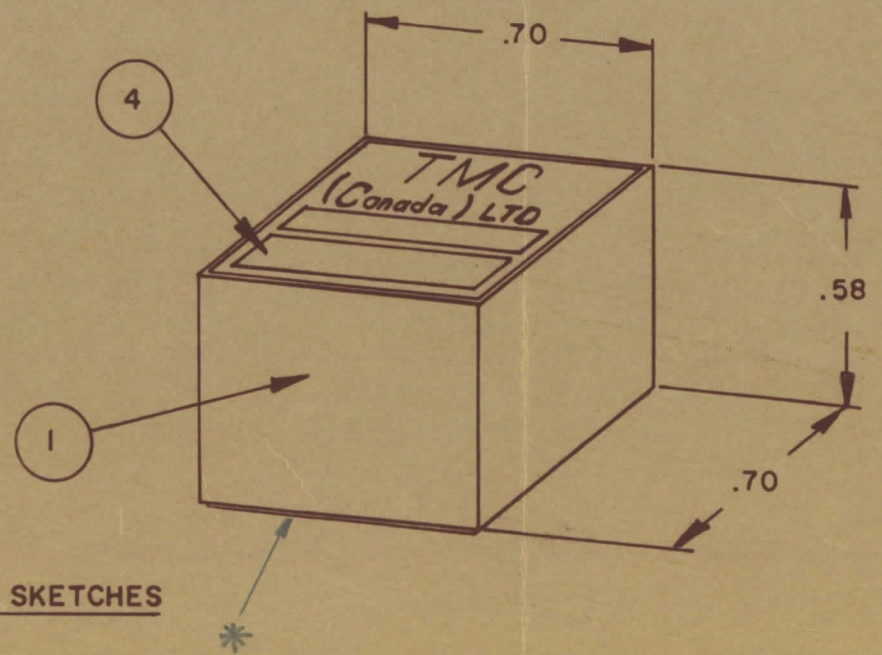
**NOTE:-**  
 1- COLOUR CODE INDICATES LAST TWO DIGITS AND LETTER IN TMC PART NO.  
 2- \* -INDICATES POSITION OF NAMEPLATE.

**ASSEMBLY INSTRUCTIONS:-**

- WIND 10 TURNS OF ITEM 3 AS SHOWN IN SKETCH 1.
- WIND \_\_\_\_\_ TURNS OF ITEM \_\_\_\_\_ AS SHOWN IN SKETCH 2.
- WIND \_\_\_\_\_ TURNS OF ITEM \_\_\_\_\_ AS SHOWN IN SKETCH 3.
- DIP COIL IN ITEM 5 AND BAKE FOR 1/2 HR. AT 125° F.
- REMOVE 1 TURNS FROM THE PRIMARY IF NECESSARY TO OBTAIN THE FOLLOWING AT TEST FREQ. OF 7.9 MHz.  
 a) INDUCTANCE IN  $\mu H$ . 6.4 ± 1.2  
 b) Q MINIMUM \_\_\_\_\_
- MAXIMUM NUMBER OF TURNS TO BE REMOVED 1
- MOUNT TRANSFORMER ON BASE & CONNECT WIRES TO CORRESPONDING PINS.
- INSTALL ITEM 8 BETWEEN PINS 8 & \_\_\_\_\_.
- INSTALL ITEM 7 & \_\_\_\_\_ BETWEEN PINS 1 & 4.
- INSTALL ITEM 3 BETWEEN PINS 4 & 9.
- POT TRANSFORMER USING ITEM 6 AS PER SPEC. S 10149.
- COLOUR CODE BOTTOM OF TRANSFORMER RED, RED, BLK.
- INSTALL NAMEPLATE.



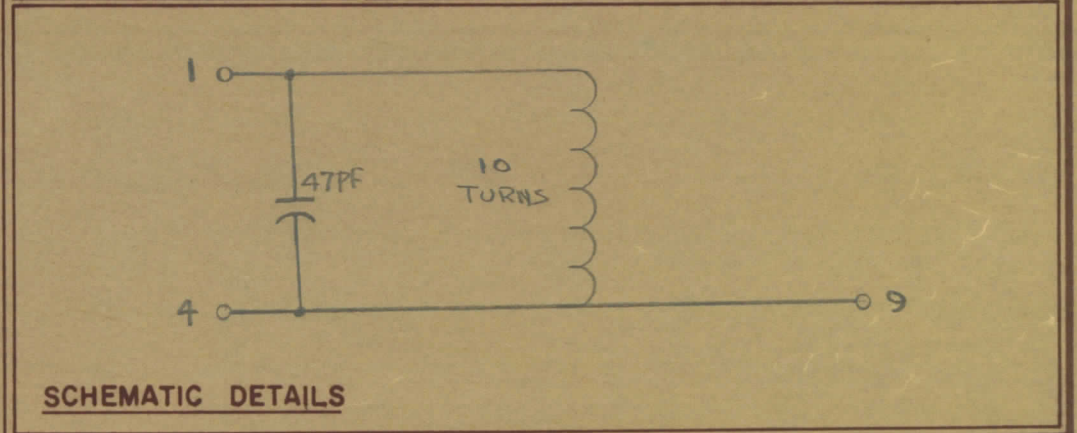
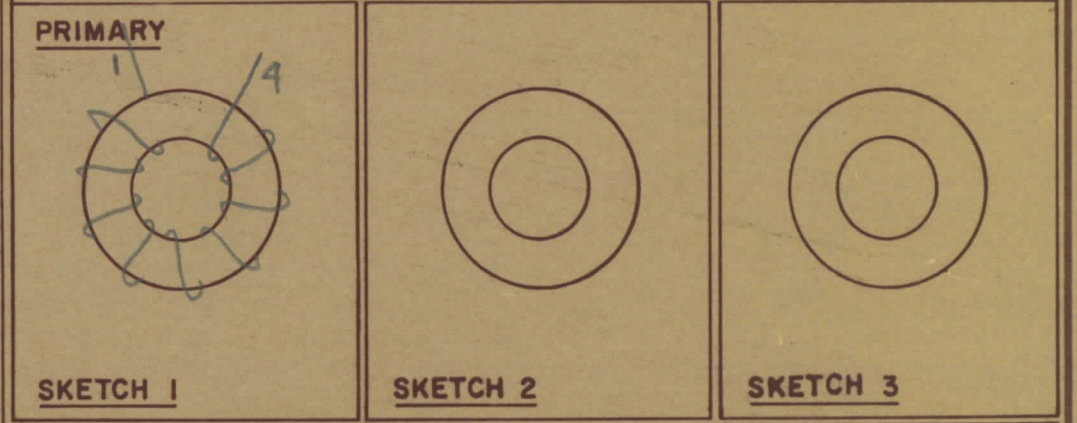
**COLOUR CODE MARKING**



TYPICAL FOR ALL SKETCHES

REQ	ITEM	PART NO	DESCRIPTION	SYMBOL
1	1	BPI0011	COIL CASE ASSEMBLY	
1	2	CI-10011-1-Q1	CORE	
AR	3	WI-123-28	WIRE MAGNET	
1	4	NP 10157	NAMEPLATE	
AR	5	GL 130	Q-DOPE	
AR	6	GL10005-3110 H	ENCAPSULANT	
1	7	CK05B X470K	CAPACITOR, FIXED	
	8			
	9			
	10			
	11			
	12			

-:DIRECTION OF WINDING TO BE CLOSELY FOLLOWED AS SHOWN IN SKETCHES. ALL LEADS TO BE 1 INCH LONG. TIN LEADS BACK 3/4 INCH.



TOLERANCES UNLESS OTHERWISE SPECIFIED		SCALE
ALL OTHERS	DEC DIM = 1/64 FRAC DIM = 1/64 ANGULAR DIM = 0°30'	.X = .05 .XX = .01 .XXX = .005 DRILL, PUNCH, COMMERCIAL STOCK SIZES AND MANUFACTURERS TOLERANCES ARE NOT INCLUDED

MODEL	PROJECT NO.	ASSY NO.	DATE
TTRR(2B)D	067/68		29 JAN 68

**TMC (Canada) LIMITED**  
 OTTAWA ONTARIO

**TRANSFORMER RF,**

**TUNED**

STOCK SIZE		
MATERIAL	WEIGHT PER PC	
TYPE & TEMPER		
HEAT TREAT SPEC		
FINISH & SPEC NO		

E.T.	[Signature]	[Signature]
DRAWN	ELEC DES APP	MECH DES APP
RPL	[Signature]	[Signature]
CHECKED	FINAL APPROVAL	

TT10002-22B A



IF IT IS FOUND DESIRABLE TO CHANGE ANY TOLERANCE OR OTHER DETAIL SPECIFIED ON THIS DRAWING NOTIFY THE PURCHASER PROMPTLY

MAXIMUM ALLOWABLE TOLERANCES HAVE BEEN DETERMINED AND DEVIATIONS WILL BE CAUSE FOR REJECTION REMOVE ALL BURRS AND SHARP EDGES

DIMENSIONS IN INCHES UNLESS OTHERWISE SPECIFIED

ISSUE	ITEM	CHANGED FROM	DATE	CN NO	DRAFTS	CHECKER	ENG APP
Ø		REL. TO PROD.	JAN 30/68		RPL		<i>[Signature]</i>
A		REV. AS PER CEMN	DEC 7/72	1208	PVM		<i>[Signature]</i>

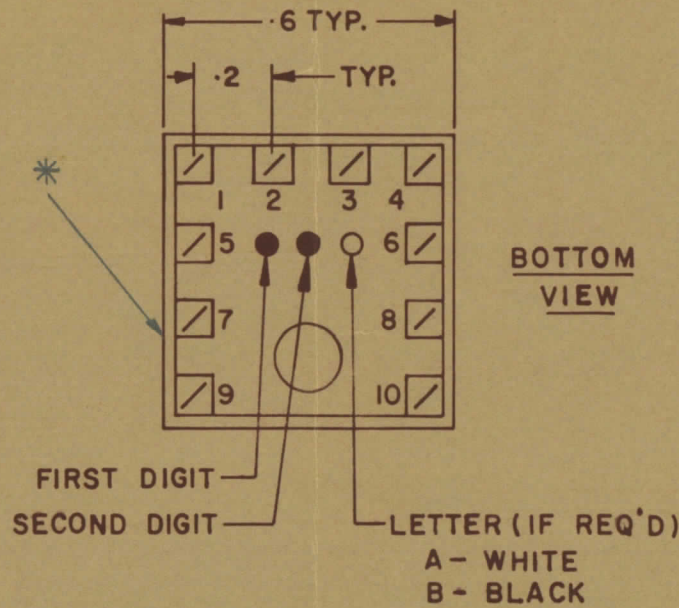
TT10002-23A A

**NOTE:-**

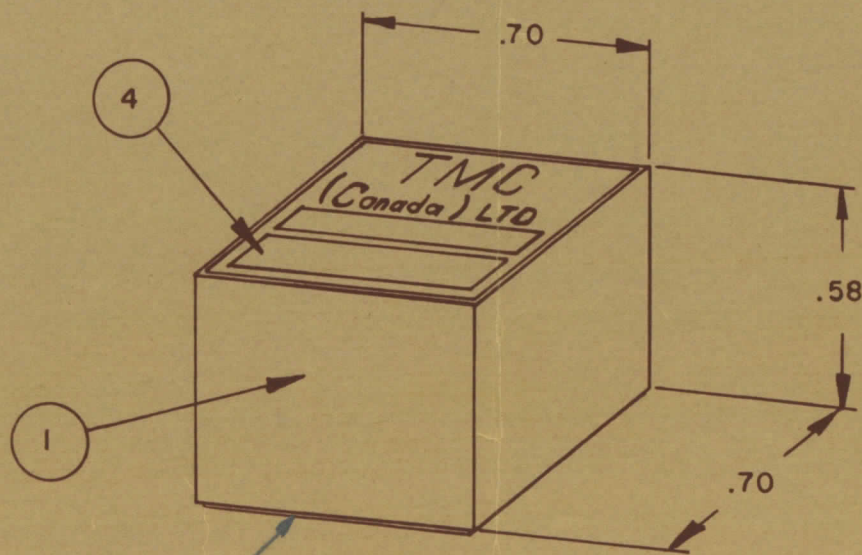
- 1- COLOUR CODE INDICATES LAST TWO DIGITS AND LETTER IN TMC PART NO.
- 2- \* -INDICATES POSITION OF NAMEPLATE.

**ASSEMBLY INSTRUCTIONS:-**

1. WIND 17 TURNS OF ITEM 3 AS SHOWN IN SKETCH 1.
2. WIND     TURNS OF ITEM     AS SHOWN IN SKETCH 2.
3. WIND     TURNS OF ITEM     AS SHOWN IN SKETCH 3.
4. DIP COIL IN ITEM 5 AND BAKE FOR 1/2 HR. AT 125 °F.
5. REMOVE 1 TURNS FROM THE PRIMARY IF NECESSARY TO OBTAIN THE FOLLOWING AT TEST FREQ. OF 2.5 MHZ.
  - a) INDUCTANCE IN  $\mu$ H. 15  $\pm$  1.5
  - b) Q MINIMUM
6. MAXIMUM NUMBER OF TURNS TO BE REMOVED 1
7. MOUNT TRANSFORMER ON BASE & CONNECT WIRES TO CORRESPONDING PINS.
8. INSTALL ITEM 7 &     BETWEEN PINS 1 & 9
9. INSTALL ITEM 3 &     BETWEEN PINS 2 & 9
10. INSTALL ITEM 8 BETWEEN PINS 4 & 9
11. POT TRANSFORMER USING ITEM 6 AS PER SPEC. S10149.
12. COLOUR CODE BOTTOM OF TRANSFORMER RED, ORN, WHT.
13. INSTALL NAMEPLATE.



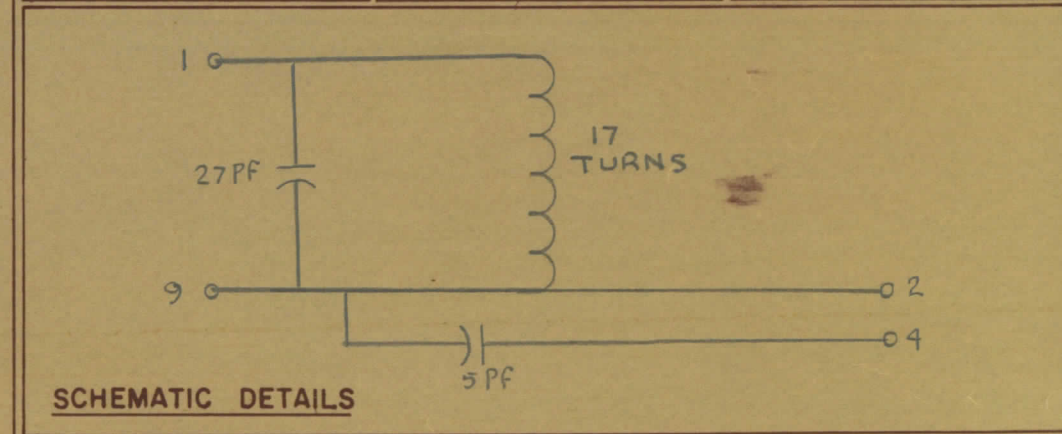
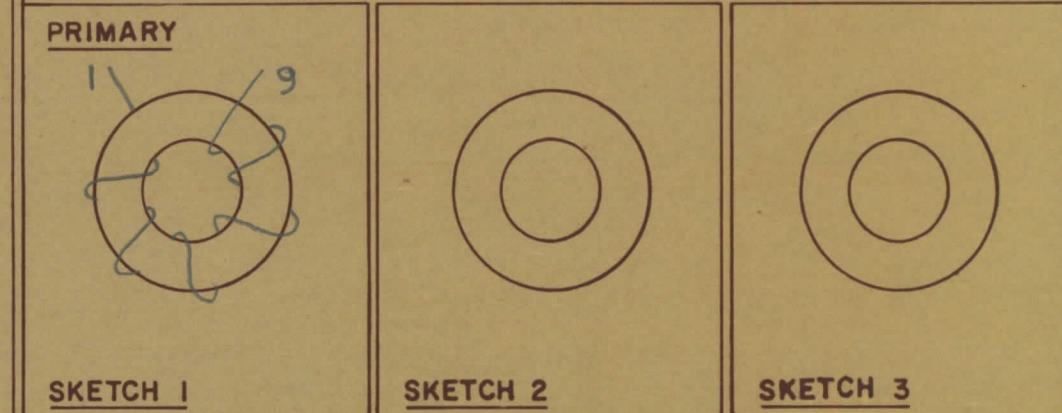
**COLOUR CODE MARKING**



TYPICAL FOR ALL SKETCHES

REQ	ITEM	PART NO	DESCRIPTION	SYMBOL
1	1	BPI0011	COIL CASE ASSEMBLY	
1	2	CI-10011-1-Q1	CORE	
AR	3	WI-123-28	WIRE MAGNET	
1	4	NP 10157	NAMEPLATE	
AR	5	GL130	Q-DOPE	
AR	6	GL10005-3110 H	ENCAPSULANT	
1	7	CK05Bx270K	CAPACITOR, FIXED	
1	8	CM10002-C-050K	CAPACITOR, FIXED	
	9			
	10			
	11			
	12			

—: DIRECTION OF WINDING TO BE CLOSELY FOLLOWED AS SHOWN IN SKETCHES. ALL LEADS TO BE 1 INCH LONG. TIN LEADS BACK 3/4 INCH.



TOLERANCES UNLESS OTHERWISE SPECIFIED	SCALE
ALL OTHERS	
DEC DIM	1/64
FRAC DIM	1/64
ANGULAR DIM	0°30'
	.X = .05
	.XX = .01
	.XXX = .005
	DRILL, PUNCH, COMMERCIAL STOCK SIZES AND MANUFACTURERS TOLERANCES ARE NOT INCLUDED

MODEL	PROJECT NO	ASSY NO	DATE
TT10002-23A	D-067/68		29 JAN 68

STOCK SIZE		TMC (Canada) LIMITED OTTAWA ONTARIO	
MATERIAL		TRANSFORMER RF,	
WEIGHT PER PC		TUNED	
TYPE & TEMPER		E.T.	<i>[Signature]</i>
HEAT TREAT SPEC		RPL	<i>[Signature]</i>
FINISH & SPEC NO		CHECKED	FINAL APPROVAL
			TT 10002-23A A



IF IT IS FOUND DESIRABLE TO CHANGE ANY TOLERANCE OR OTHER DETAIL SPECIFIED ON THIS DRAWING NOTIFY THE PURCHASER PROMPTLY.

DIMENSIONS IN INCHES UNLESS OTHERWISE SPECIFIED

MAXIMUM ALLOWABLE TOLERANCES HAVE BEEN DETERMINED AND DEVIATIONS WILL BE CAUSE FOR REJECTION REMOVE ALL BURRS AND SHARP EDGES

ISSUE	ITEM	CHANGED FROM	DATE	CN NO	DRAFTS	CHECKER	ENG APP
0		REL. TO PROD.	JAN 30/68		RPL		
A		REV. AS PER CEMN	DEC 7/72	1208	P/M		

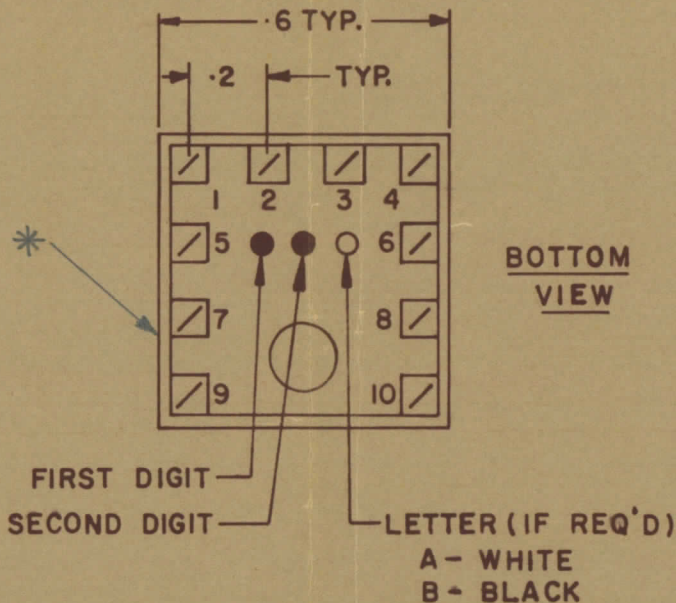
TT10002-238 A

**NOTE--:**

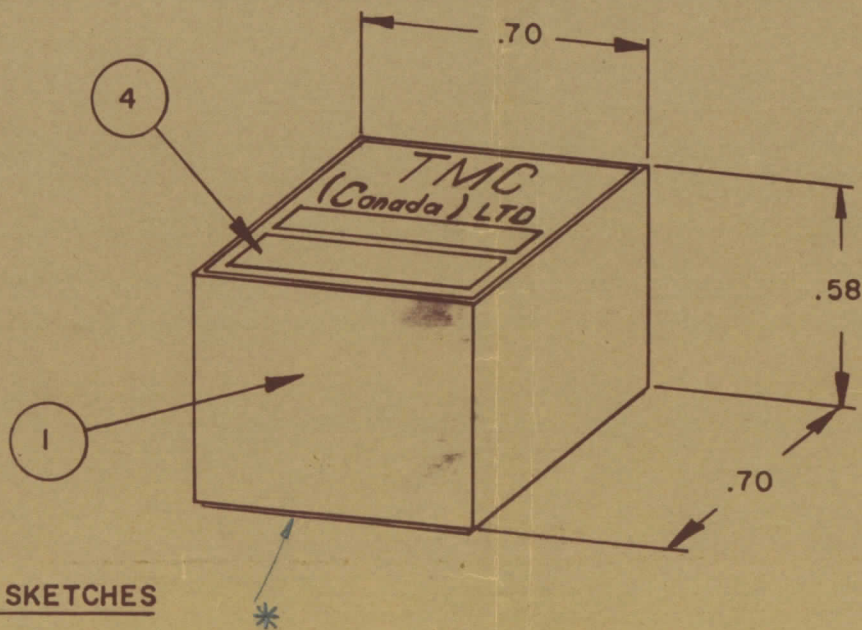
- 1- COLOUR CODE INDICATES LAST TWO DIGITS AND LETTER IN TMC PART NO.
- 2- \* -INDICATES POSITION OF NAMEPLATE.

**ASSEMBLY INSTRUCTIONS:--**

1. WIND 10 TURNS OF ITEM 3 AS SHOWN IN SKETCH 1.
2. WIND      TURNS OF ITEM      AS SHOWN IN SKETCH 2.
3. WIND      TURNS OF ITEM      AS SHOWN IN SKETCH 3.
4. DIP COIL IN ITEM 5 AND BAKE FOR 1/2 HR. AT 125 °F.
5. REMOVE      TURNS FROM THE PRIMARY IF NECESSARY TO OBTAIN THE FOLLOWING AT TEST FREQ. OF 7.9 MHz.
  - a) INDUCTANCE IN  $\mu$ H. 6.8  $\pm$  1.2
  - b) Q MINIMUM
6. MAXIMUM NUMBER OF TURNS TO BE REMOVED 1
7. MOUNT TRANSFORMER ON BASE & CONNECT WIRES TO CORRESPONDING PINS.
8. INSTALL ITEM      &      BETWEEN PINS      &     .
9. INSTALL ITEM 7 &      BETWEEN PINS 1 & 9.
10. INSTALL ITEM 3 BETWEEN PINS 2 & 9.
11. POT TRANSFORMER USING ITEM 6 AS PER SPEC. S 10149.
12. COLOUR CODE BOTTOM OF TRANSFORMER RED, ORN, BLK.
13. INSTALL NAMEPLATE.



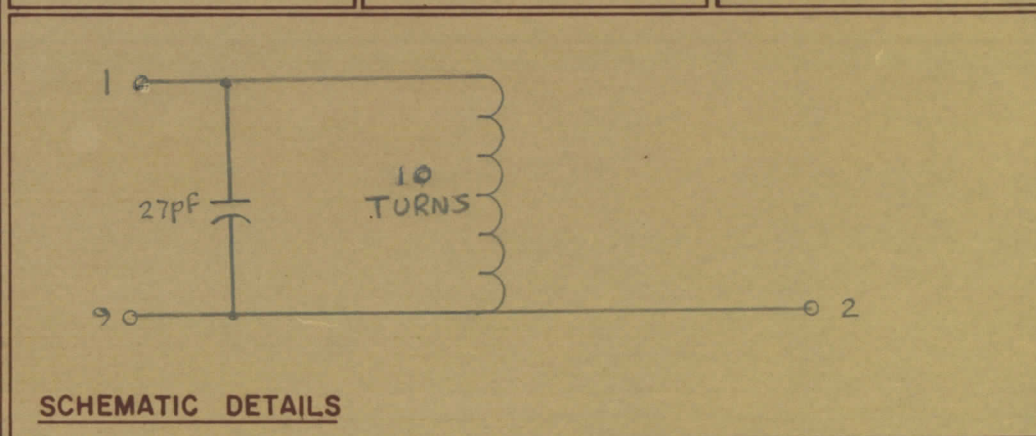
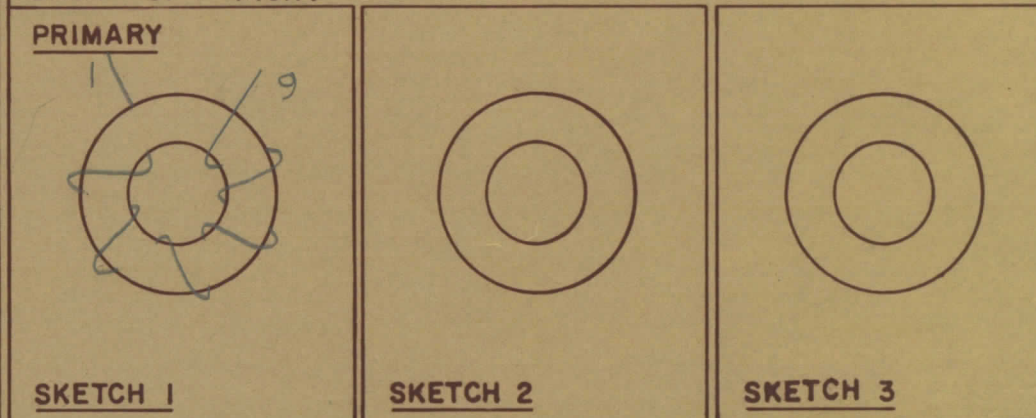
**COLOUR CODE MARKING**



TYPICAL FOR ALL SKETCHES

REQ	ITEM	PART NO.	DESCRIPTION	SYMBOL
1	1	BPI0011	COIL CASE ASSEMBLY	
1	2	CI-10011-1-Q1	CORE	
AR	3	WI-123-28	WIRE MAGNET	
1	4	NP 10157	NAMEPLATE	
AR	5	GL 130	Q-DOPE	
AR	6	GL 10005-3110 H	ENCAPSULANT	
1	7	CK05B x 270K	CAPACITOR, FIXED	
	8			
	9			
	10			
	11			
	12			

—: DIRECTION OF WINDING TO BE CLOSELY FOLLOWED AS SHOWN IN SKETCHES. ALL LEADS TO BE 1 INCH LONG, TIN LEADS BACK 3/4 INCH.



STOCK SIZE		TMC (Canada) LIMITED OTTAWA ONTARIO	
MATERIAL		TRANSFORMER RF,	
WEIGHT PER PC		TUNED	
TYPE & TEMPER		E.T.	
HEAT TREAT SPEC		DRWN	
FINISH & SPEC NO		CHECKED	
		FINAL APPROVAL	
		TT 10002-238 A	

TOLERANCES UNLESS OTHERWISE SPECIFIED	SCALE	DRILL, PUNCH, COMMERCIAL STOCK SIZES AND MANUFACTURERS TOLERANCES ARE NOT INCLUDED
ALL OTHERS	DEC DIM 1/64 FRAC DIM 1/64 ANGULAR DIM 0°30'	X = .05 XX = .01 XXX = .005

TTRR(2B)D	067/68	29 JAN 68
MODEL	PROJECT NO	ASSY NO
USED ON		



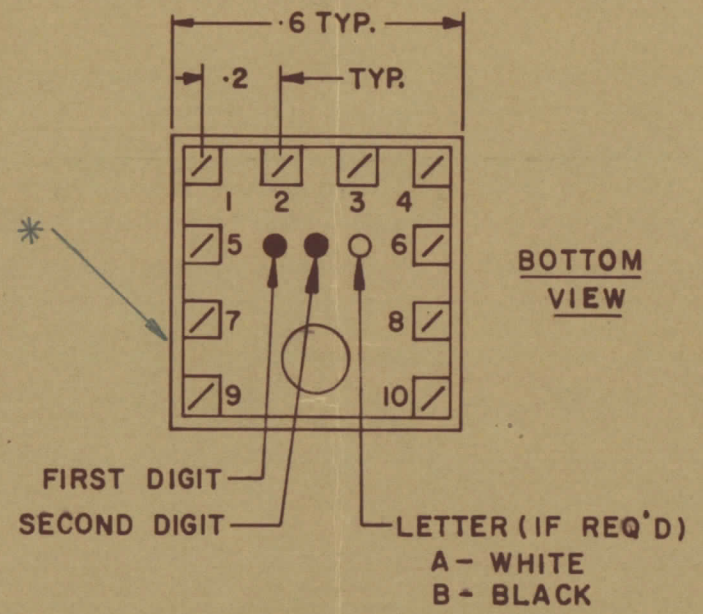
IF IT IS FOUND DESIRABLE TO CHANGE ANY TOLERANCE OR OTHER DETAIL SPECIFIED ON THIS DRAWING NOTIFY THE PURCHASER PROMPTLY.					DIMENSIONS IN INCHES UNLESS OTHERWISE SPECIFIED		
MAXIMUM ALLOWABLE TOLERANCES HAVE BEEN DETERMINED AND DEVIATIONS WILL BE CAUSE FOR REJECTION REMOVE ALL BURRS AND SHARP EDGES					OTHERWISE SPECIFIED		
ISSUE	ITEM	CHANGED FROM	DATE	CN NO	DRAFTS	CHECKER	ENG APP
Ø		REL. TO PROD.	JAN 30/68		RPL		
A		REV. AS PER CEMN	MAY 15/68	364	RPL		
B		REV. AS PER CEMN	DEC 7/72	1208	PVM		

TT10002-31A B

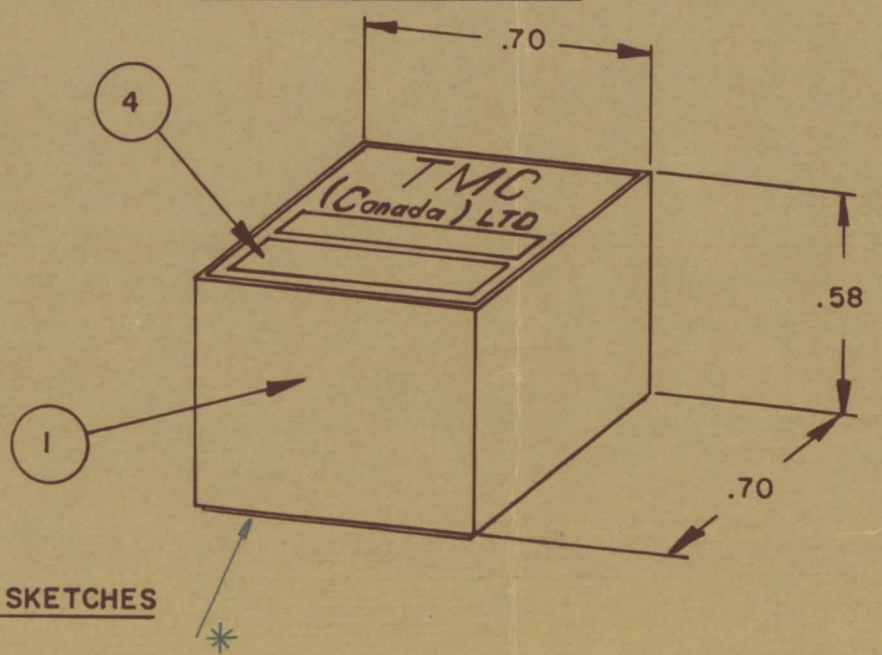
**NOTE:-**  
 1- COLOUR CODE INDICATES LAST TWO DIGITS AND LETTER IN TMC PART NO.  
 2- \* -INDICATES POSITION OF NAMEPLATE.

**ASSEMBLY INSTRUCTIONS:-**

- WIND 15 TURNS OF ITEM 3 AS SHOWN IN SKETCH 1.
- WIND 4 TURNS OF ITEM 7 AS SHOWN IN SKETCH 2.
- WIND    TURNS OF ITEM    AS SHOWN IN SKETCH 3.
- DIP COIL IN ITEM 5 AND BAKE FOR 1/2 HR. AT 125 °F.
- REMOVE 1 TURNS FROM THE PRIMARY IF NECESSARY TO OBTAIN THE FOLLOWING AT TEST FREQ. OF 7.9 MHZ.
  - INDUCTANCE IN  $\mu$ H. 4.5  $\pm$  .6
  - Q MINIMUM
- MAXIMUM NUMBER OF TURNS TO BE REMOVED 1
- MOUNT TRANSFORMER ON BASE & CONNECT WIRES TO CORRESPONDING PINS.
- INSTALL ITEM 8 &    BETWEEN PINS 9 & 10.
- INSTALL ITEM    &    BETWEEN PINS    &   .
- INSTALL ITEM    BETWEEN PINS    &   .
- POT TRANSFORMER USING ITEM 6 AS PER SPEC. S 10149.
- COLOUR CODE BOTTOM OF TRANSFORMER ORN, BRN, WHT.
- INSTALL NAMEPLATE.



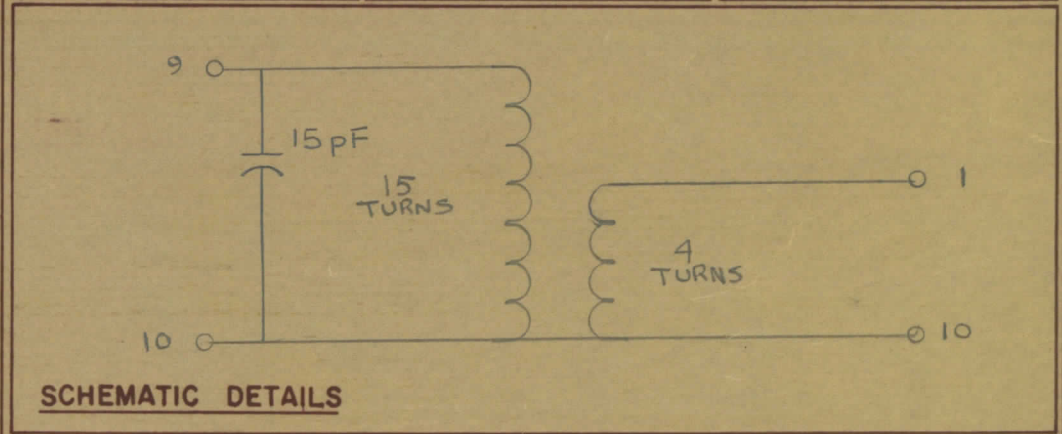
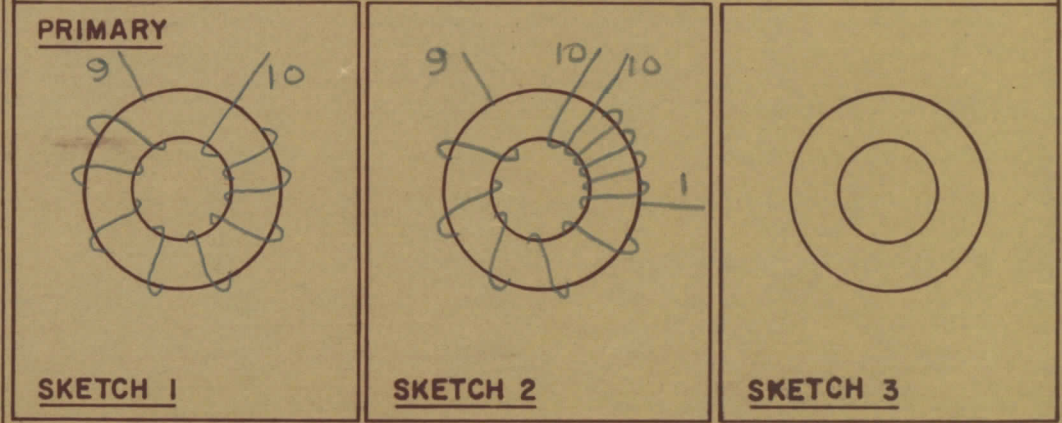
**COLOUR CODE MARKING**



TYPICAL FOR ALL SKETCHES

REQ	ITEM	PART NO	DESCRIPTION	SYMBOL
1	1	BPI0011	COIL CASE ASSEMBLY	
1	2	CI-10011-1-Q2	CORE	
AR	3	WI-123-28	WIRE MAGNET	
1	4	NP 10157	NAMEPLATE	
AR	5	GL 130	Q-DOPE	
AR	6	GL 10005-3110 H	ENCAPSULANT	
AR	7	WI-122-30	WIRE MAGNET	
1	8	CK05Bx150K	CAPACITOR, FIXED	
	9			
	10			
	11			
	12			

DIRECTION OF WINDING TO BE CLOSELY FOLLOWED AS SHOWN IN SKETCHES. ALL LEADS TO BE 1 INCH LONG. TIN LEADS BACK 3/4 INCH.



TOLERANCES UNLESS OTHERWISE SPECIFIED	SCALE
ALL OTHERS	
DEC DIM - .05	
FRAC DIM - 1/64	
ANGULAR DIM - 0°30'	
	.XX = .01
	.XXX = .005
DRILL, PUNCH, COMMERCIAL STOCK SIZES AND MANUFACTURERS TOLERANCES ARE NOT INCLUDED.	

MODEL	PROJECT NO	ASSY. NO.	DATE
TTRR(3A)D	067/68		29 JAN 68
USED ON			

STOCK SIZE		TMC (Canada) LIMITED OTTAWA ONTARIO	
MATERIAL		TRANSFORMER RF,	
WEIGHT PER PC		TUNED	
TYPE & TEMPER		E. T.	<i>[Signature]</i>
HEAT TREAT SPEC.		DRAWN	<i>[Signature]</i>
FINISH & SPEC. NO.		CHECKED	<i>[Signature]</i>
		FINAL APPROVAL	
		TT10002-31A B	



IF IT IS FOUND DESIRABLE TO CHANGE ANY TOLERANCE OR OTHER DETAIL SPECIFIED ON THIS DRAWING NOTIFY THE PURCHASER PROMPTLY				DIMENSIONS IN INCHES UNLESS OTHERWISE SPECIFIED			
MAXIMUM ALLOWABLE TOLERANCES HAVE BEEN DETERMINED AND DEVIATIONS WILL BE CAUSE FOR REJECTION REMOVE ALL BURRS AND SHARP EDGES				OTHERWISE SPECIFIED			
ISSUE	ITEM	CHANGED FROM	DATE	CN NO	DRAFTS	CHECKER	ENG APP
Ø		REL. TO PROD.	JAN 30/68		RPL		
A		REV. AS PER CEMN	MAY 15/68	364	RPL		
B		REV AS PER CEMN	DEC 7/72	1208	PVM		

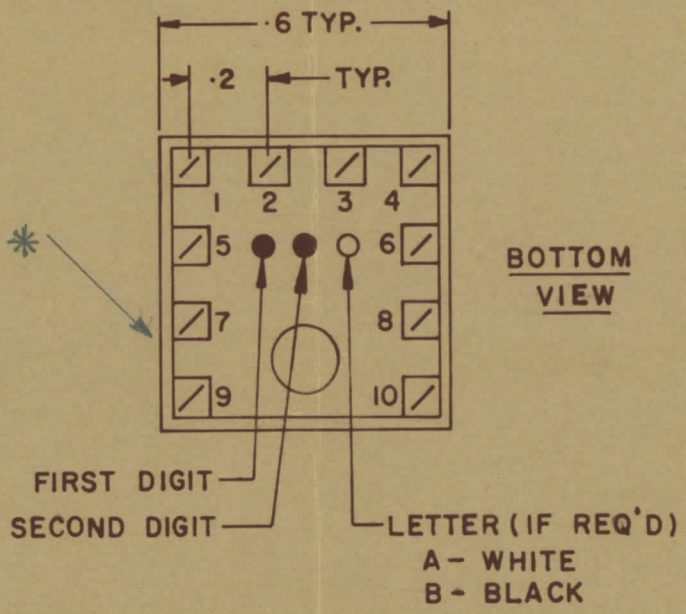
TT10002-31B B

REQ	ITEM	PART NO	DESCRIPTION
1	1	BPI0011	COIL CASE ASSEMBLY
1	2	CI-10011-1-Q2	CORE
AR	3	WI-123-28	WIRE MAGNET
1	4	NP 10157	NAMEPLATE
AR	5	GL 130	Q-DOPE
AR	6	GL 10005-3110 H	ENCAPSULANT
AR	7	WI-122-30	WIRE MAGNET
1	8	CK05Bx330K	CAPACITOR, FIXED
	9		
	10		
	11		
	12		

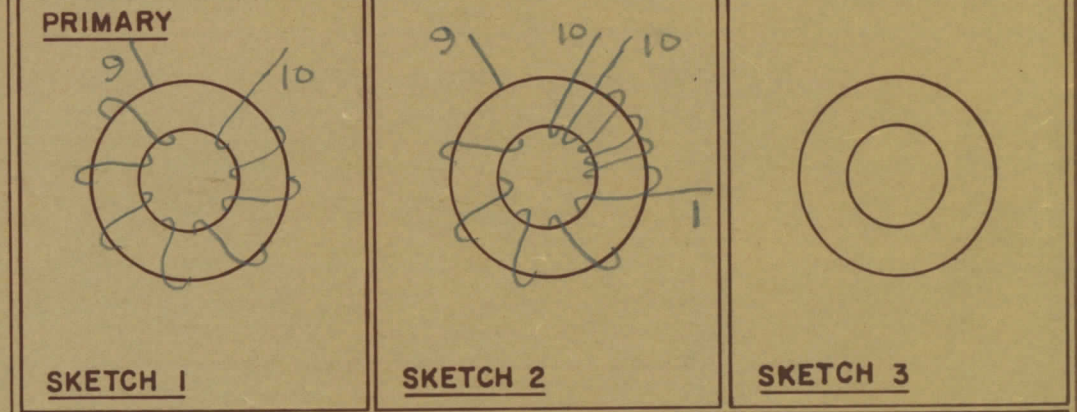
NOTE:-  
 1- COLOUR CODE INDICATES LAST TWO DIGITS AND LETTER IN TMC PART NO.  
 2- \* -INDICATES POSITION OF NAMEPLATE.

**ASSEMBLY INSTRUCTIONS:-**

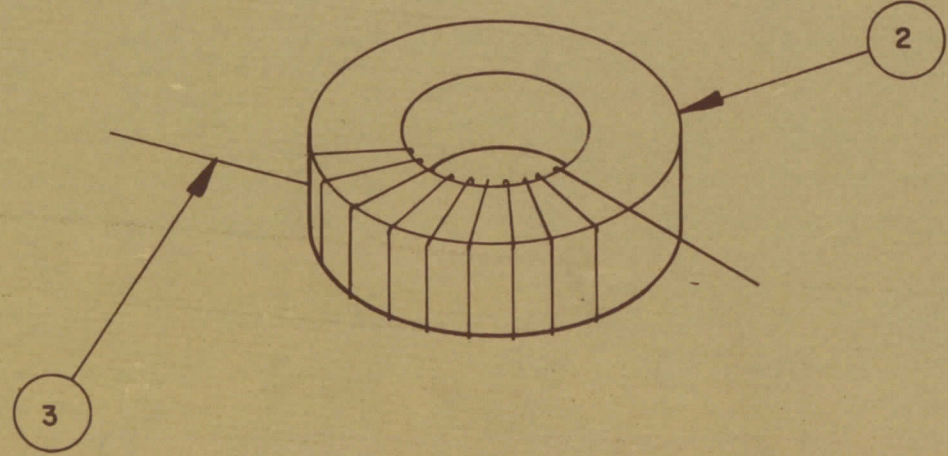
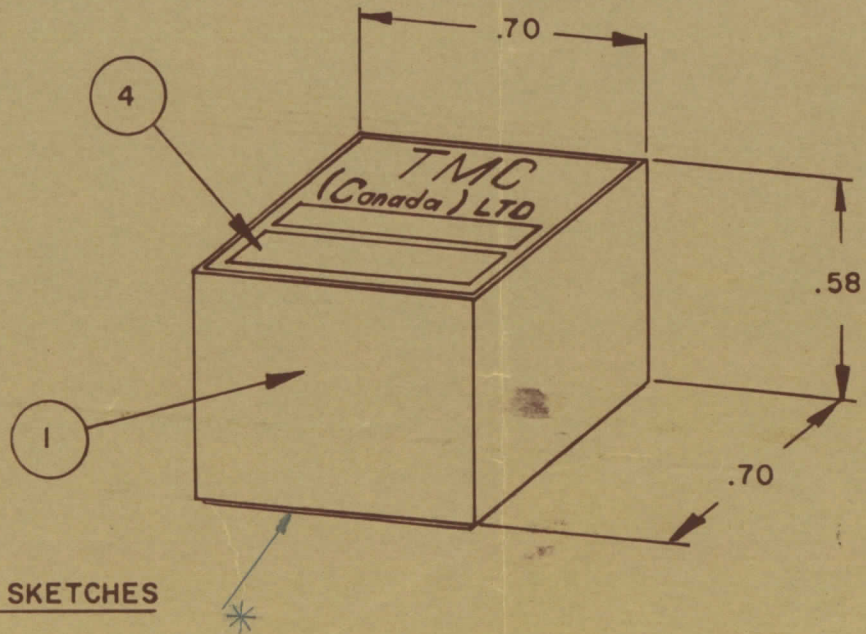
- WIND 10 TURNS OF ITEM 3 AS SHOWN IN SKETCH 1.
- WIND 3 TURNS OF ITEM 7 AS SHOWN IN SKETCH 2.
- WIND --- TURNS OF ITEM --- AS SHOWN IN SKETCH 3.
- DIP COIL IN ITEM 5 AND BAKE FOR 1/2 HR. AT 125 °F.
- REMOVE 1 TURNS FROM THE PRIMARY IF NECESSARY TO OBTAIN THE FOLLOWING AT TEST FREQ. OF 7.9 MHZ.
  - INDUCTANCE IN  $\mu$ H. 1.5  $\pm$  .4
  - Q MINIMUM ---
- MAXIMUM NUMBER OF TURNS TO BE REMOVED 1
- MOUNT TRANSFORMER ON BASE & CONNECT WIRES TO CORRESPONDING PINS.
- INSTALL ITEM 8 BETWEEN PINS --- & ---.
- INSTALL ITEM 8 BETWEEN PINS --- & ---.
- INSTALL ITEM 8 BETWEEN PINS 9 & 10.
- POT TRANSFORMER USING ITEM 6 AS PER SPEC. S10149.
- COLOUR CODE BOTTOM OF TRANSFORMER ORN, BRN, BLK.
- INSTALL NAMEPLATE.



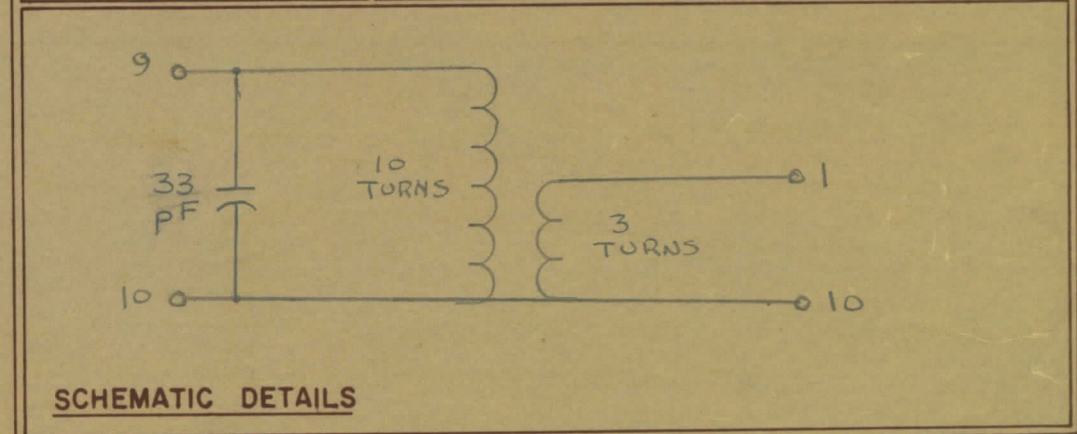
-:DIRECTION OF WINDING TO BE CLOSELY FOLLOWED AS SHOWN IN SKETCHES. ALL LEADS TO BE 1 INCH LONG. TIN LEADS BACK 3/4 INCH.



**COLOUR CODE MARKING**



TYPICAL FOR ALL SKETCHES



TOLERANCES UNLESS OTHERWISE SPECIFIED	SCALE
ALL OTHERS	X = .05 XX = .01 XXX = .005
DEC DIM 1/64	DRILL, PUNCH, COMMERCIAL STOCK
ANGULAR DIM 0°30'	SIZES AND MANUFACTURERS TOLERANCES ARE NOT INCLUDED

MODEL	PROJECT NO	ASSY NO	DATE
TTRR(3B)D	067/68		29 JAN 68
USED ON			

STOCK SIZE		TMC (Canada) LIMITED OTTAWA ONTARIO	
MATERIAL		TRANSFORMER RF,	
WEIGHT PER PC		TUNED	
TYPE & TEMPER		E.T. DRAWN	Judy ELEC DES APP
HEAT TREAT SPEC		RPL CHECKED	[Signature] MECH DES APP
FINISH & SPEC NO		FINAL APPROVAL	
		TT10002-31B B	



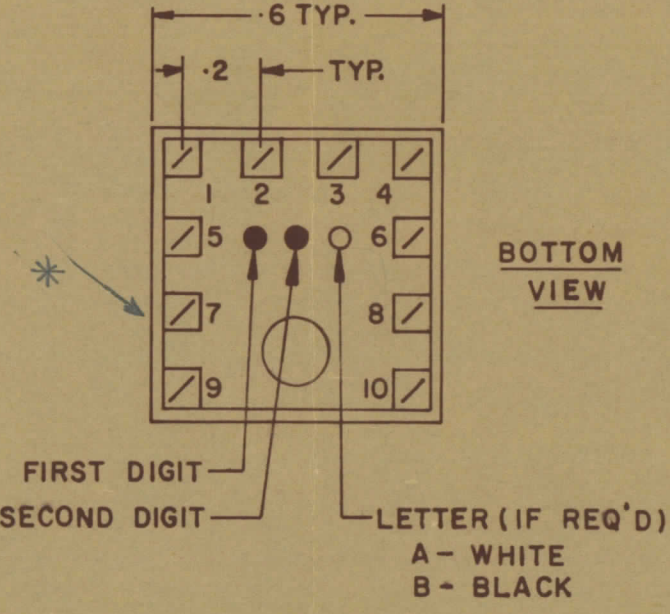
IF IT IS FOUND DESIRABLE TO CHANGE ANY TOLERANCE OR OTHER DETAIL SPECIFIED ON THIS DRAWING NOTIFY THE PURCHASER PROMPTLY.		DIMENSIONS IN INCHES UNLESS OTHERWISE SPECIFIED					
MAXIMUM ALLOWABLE TOLERANCES HAVE BEEN DETERMINED AND DEVIATIONS WILL BE CAUSE FOR REJECTION REMOVE ALL BURRS AND SHARP EDGES							
ISSUE	ITEM	CHANGED FROM	DATE	CN NO	DRAFTS	CHECKER	ENG APP
Ø		REL TO PROD'	JAN 30/68		RPL		
A		REV AS PER CEMN	MAY 15/68	364	RPL		
B		REV AS PER CEMN	JUNE 17/68	372	AP		
C		REV AS PER CEMN	JAN 23/69	435	AP		
D		REV AS PER CEMN	DEC 3/72	1208	PVM		

TT10002-32A D

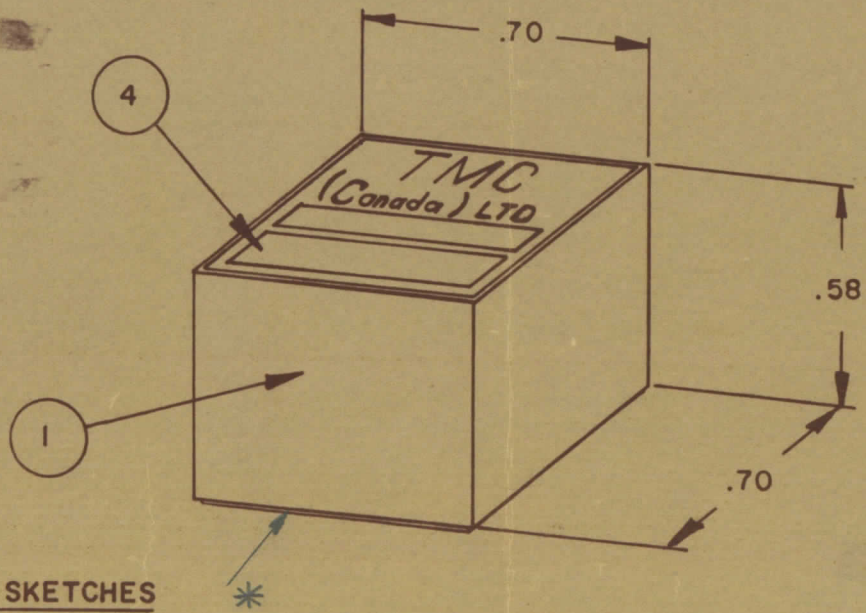
**NOTE:-**  
 1- COLOUR CODE INDICATES LAST TWO DIGITS AND LETTER IN TMC PART NO.  
 2- \* -INDICATES POSITION OF NAMEPLATE.

**ASSEMBLY INSTRUCTIONS:-**

- WIND 15 TURNS OF ITEM 3 AS SHOWN IN SKETCH 1.
- WIND — TURNS OF ITEM — AS SHOWN IN SKETCH 2.
- WIND — TURNS OF ITEM — AS SHOWN IN SKETCH 3.
- DIP COIL IN ITEM 5 AND BAKE FOR 1/2 HR. AT 125 °F.
- REMOVE 1 TURNS FROM THE PRIMARY IF NECESSARY TO OBTAIN THE FOLLOWING AT TEST FREQ. OF 7.9 MHZ.
  - INDUCTANCE IN  $\mu$ H. 4.5 ± .6
  - Q MINIMUM —
- MAXIMUM NUMBER OF TURNS TO BE REMOVED 1
- MOUNT TRANSFORMER ON BASE & CONNECT WIRES TO CORRESPONDING PINS.
- INSTALL ITEM 8 & 9 BETWEEN PINS 1 & 4.
- INSTALL ITEM 7 & — BETWEEN PINS 9 & 10.
- INSTALL ITEM 3 BETWEEN PINS 4 & 9.
- POT TRANSFORMER USING ITEM 6 AS PER SPEC. S 10149.
- COLOUR CODE BOTTOM OF TRANSFORMER ORN, RED, WHT.
- INSTALL NAMEPLATE.



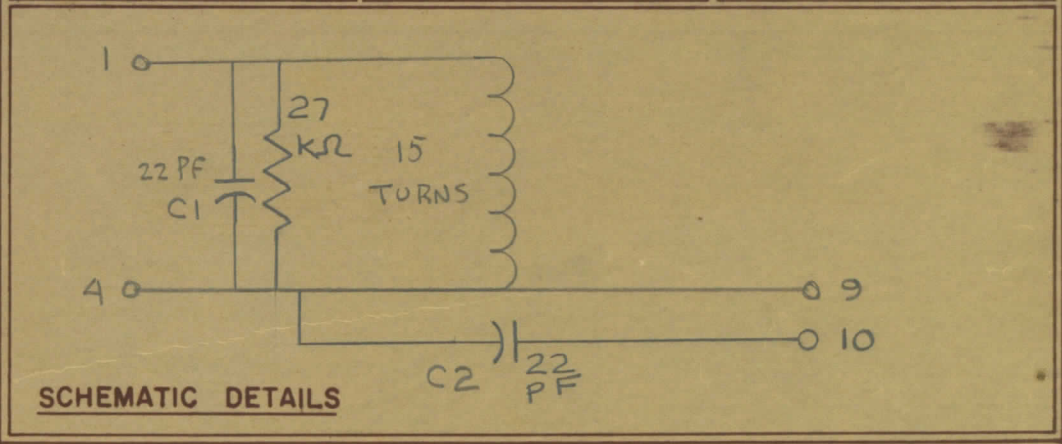
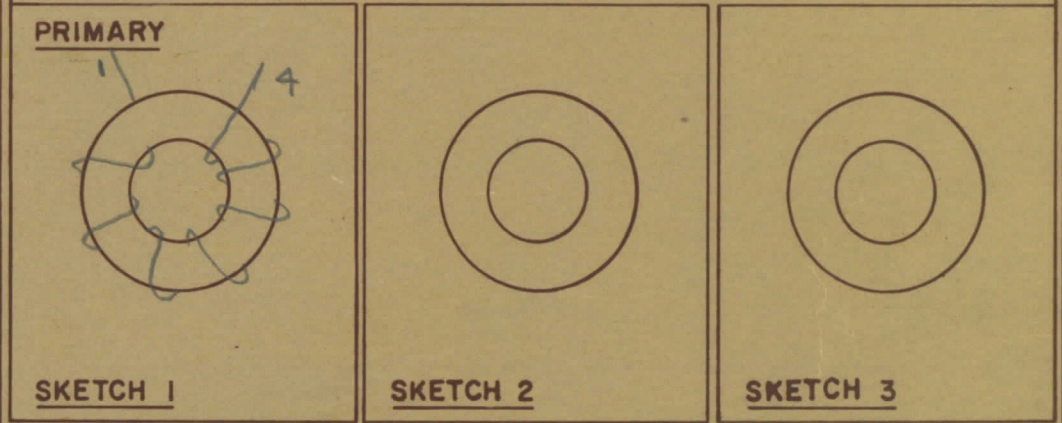
**COLOUR CODE MARKING**



TYPICAL FOR ALL SKETCHES

REQ	ITEM	PART NO.	DESCRIPTION	SYMBOL
1	1	BPI0011	COIL CASE ASSEMBLY	
1	2	CI-10011-1-Q2	CORE	
AR	3	WI-123-28	WIRE MAGNET	
1	4	NP 10157	NAMEPLATE	
AR	5	GL 130	Q-DOPE	
AR	6	GL 10005-3110 H	ENCAPSULANT	
1	7	CK05Bx220K	CAPACITOR, FIXED	C2
1	8	RC07GF273J	RESISTOR, FIXED	
1	9	CK05Bx220K	CAPACITOR, FIXED	C1
	10			
	11			
	12			

—: DIRECTION OF WINDING TO BE CLOSELY FOLLOWED AS SHOWN IN SKETCHES. ALL LEADS TO BE 1 INCH LONG. TIN LEADS BACK 3/4 INCH.



TOLERANCES UNLESS OTHERWISE SPECIFIED		SCALE
ALL OTHERS	DEC DIM .1 FRAC DIM .64 ANGULAR DIM .0°30'	X = .05 XX = .01 XXX = .005
DRILL, PUNCH, COMMERCIAL STOCK SIZES AND MANUFACTURERS TOLERANCES ARE NOT INCLUDED		

MODEL	PROJECT NO	ASSY NO	DATE
TTRR(3A)D	067/68		29 JAN 68
USED ON			

STOCK SIZE		TMC (Canada) LIMITED OTTAWA ONTARIO	
MATERIAL		TRANSFORMER RF,	
WEIGHT PER PC		TUNED	
TYPE & TEMPER		E.T.	<i>Sachy</i>
HEAT TREAT SPEC		RPL	<i>[Signature]</i>
FINISH & SPEC. NO.		CHECKED	FINAL APPROVAL
			TT10002-32A D



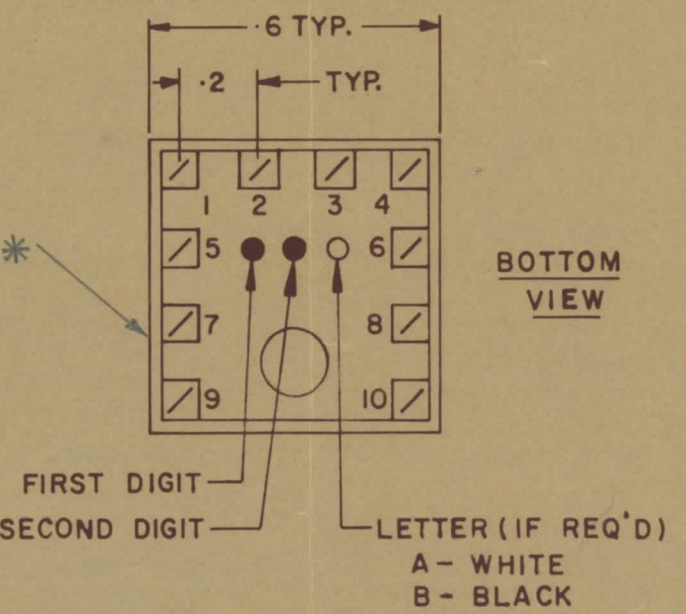
IF IT IS FOUND DESIRABLE TO CHANGE ANY TOLERANCE OR OTHER DETAIL SPECIFIED ON THIS DRAWING NOTIFY THE PURCHASER PROMPTLY		DIMENSIONS IN INCHES UNLESS OTHERWISE SPECIFIED					
MAXIMUM ALLOWABLE TOLERANCES HAVE BEEN DETERMINED AND DEVIATIONS WILL BE CAUSE FOR REJECTION. REMOVE ALL BURRS AND SHARP EDGES		OTHERWISE SPECIFIED					
ISSUE	ITEM	CHANGED FROM	DATE	CN NO	DRAFTS	CHECKER	ENG APP
Ø		REL. TO PROD.	JAN 30/68		RPL		[Signature]
A		REV AS PER CEMN	MAY 15/68	364	RPL		[Signature]
B		REV AS PER CEMN	JUNE 15/69	372	AP		[Signature]
C		REV. AS PER CEMN	7 DEC 72	1208	PVM		[Signature]

TT10002-32B C

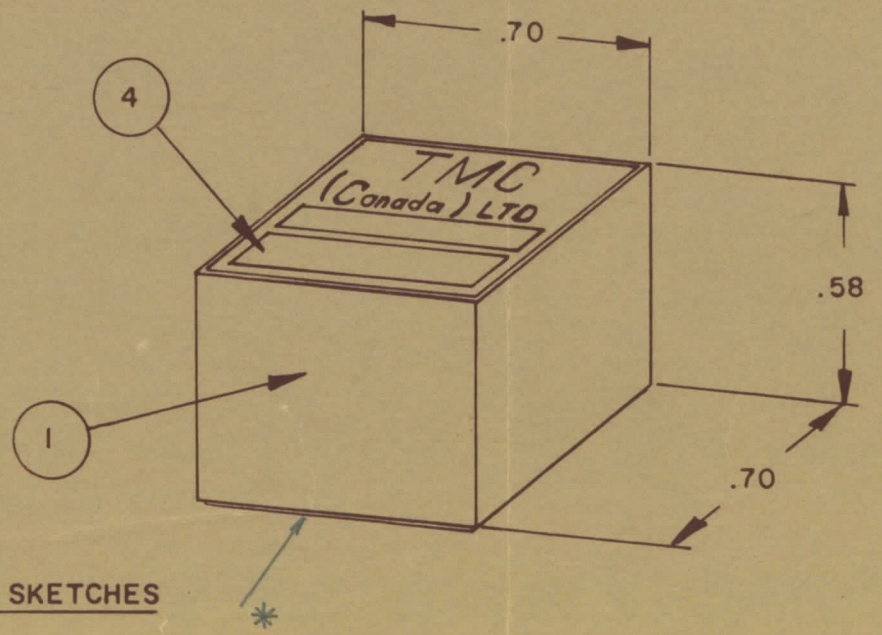
NOTE:-  
 1- COLOUR CODE INDICATES LAST TWO DIGITS AND LETTER IN TMC PART NO.  
 2- \* -INDICATES POSITION OF NAMEPLATE.

**ASSEMBLY INSTRUCTIONS:-**

- WIND 10 TURNS OF ITEM 3 AS SHOWN IN SKETCH 1.
- WIND     TURNS OF ITEM     AS SHOWN IN SKETCH 2.
- WIND     TURNS OF ITEM     AS SHOWN IN SKETCH 3.
- DIP COIL IN ITEM 5 AND BAKE FOR 1/2 HR. AT 125 °F.
- REMOVE 1 TURNS FROM THE PRIMARY IF NECESSARY TO OBTAIN THE FOLLOWING AT TEST FREQ. OF 7.9 MHZ.
  - INDUCTANCE IN  $\mu$ H. 1.5  $\pm$  .4
  - Q MINIMUM
- MAXIMUM NUMBER OF TURNS TO BE REMOVED 1
- MOUNT TRANSFORMER ON BASE & CONNECT WIRES TO CORRESPONDING PINS.
- INSTALL ITEMS 8 & 9 BETWEEN PINS 1 & 4.
- INSTALL ITEM 7 &     BETWEEN PINS 4 & 10.
- INSTALL ITEM 3 BETWEEN PINS 4 & 9.
- POT TRANSFORMER USING ITEM 6 AS PER SPEC. S 10149.
- COLOUR CODE BOTTOM OF TRANSFORMER ORN, RED, BLK.
- INSTALL NAMEPLATE.



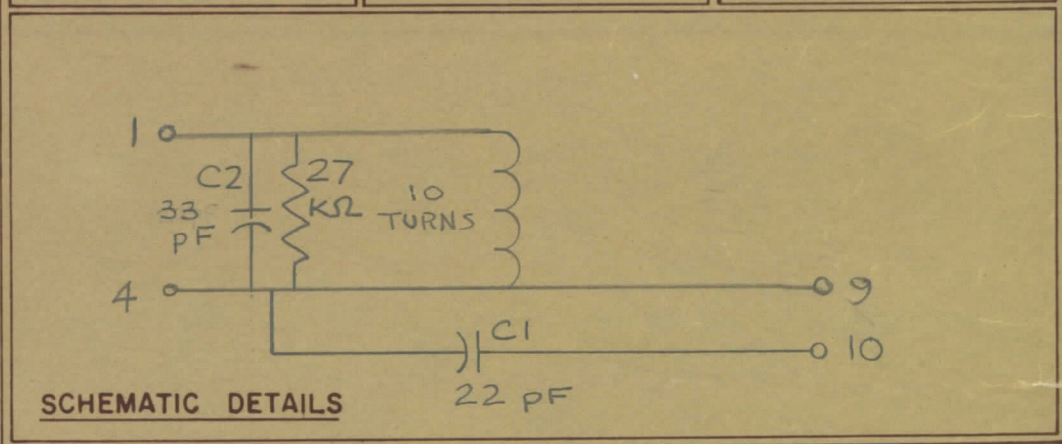
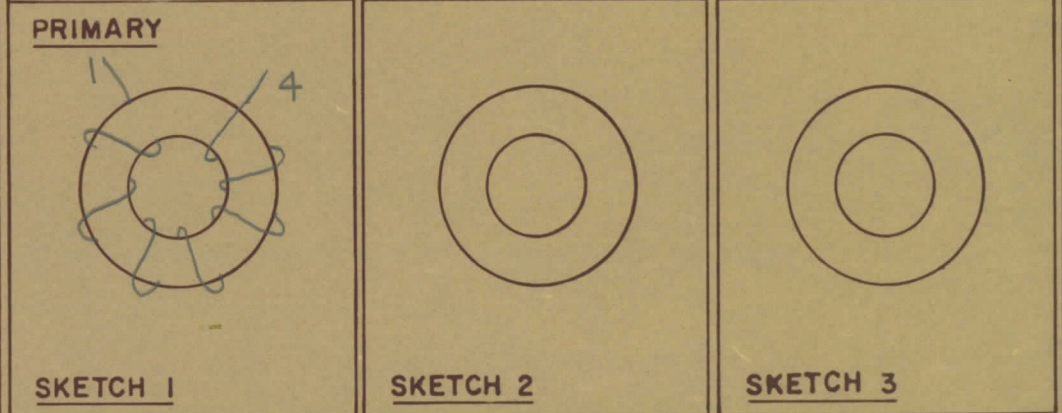
**COLOUR CODE MARKING**



TYPICAL FOR ALL SKETCHES

REF	ITEM	PART NO	DESCRIPTION	SYMBOL
1	1	BPI0011	COIL CASE ASSEMBLY	
1	2	CI-10011-1-Q2	CORE	
AR	3	WI-123-28	WIRE MAGNET	
1	4	NP 10157	NAMEPLATE	
AR	5	GL 130	Q-DOPE	
AR	6	GL 10005-3110 H	ENCAPSULANT	
1	7	CK05B X220K	CAPACITOR, FIXED	CI
1	8	CK05B X330K	CAPACITOR, FIXED	CZ
1	9	RC07GF 273J	RESISTOR FXD COMP.	
	10			
	11			
	12			

:- DIRECTION OF WINDING TO BE CLOSELY FOLLOWED AS SHOWN IN SKETCHES. ALL LEADS TO BE 1 INCH LONG. TIN LEADS BACK 3/4 INCH.



TOLERANCES UNLESS OTHERWISE SPECIFIED		SCALE
ALL OTHERS	DEC DIM 1/64	X = .05 XX = .01 XXX = .005
	ANGULAR DIM 0°30'	DRILL PUNCH, COMMERCIAL STOCK SIZES AND MANUFACTURERS TOLERANCES ARE NOT INCLUDED

MODEL	PROJECT NO	ASSY NO	DATE
TTRR(3B)D	067/68		29 JAN 68
USED ON			

**TMC (Canada) LIMITED**  
OTTAWA ONTARIO

**TRANSFORMER RF,**

**TUNED**

STOCK SIZE	
MATERIAL	WEIGHT PER PC
TYPE & TEMPER	
HEAT TREAT SPEC	
FINISH & SPEC. NO	

DESIGNED BY	DRAWN	ELEC DES APP	MECH DES APP
	RPL	[Signature]	[Signature]
CHECKED		FINAL APPROVAL	

TT 10002-32B C



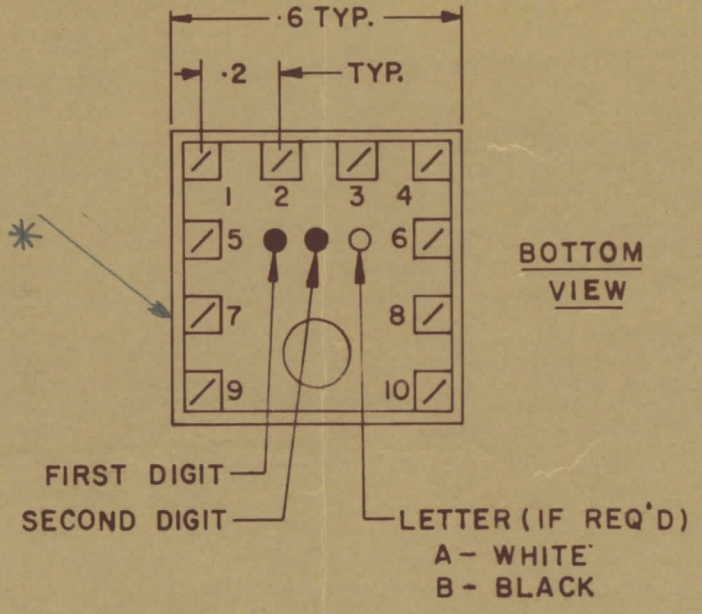
IF IT IS FOUND DESIRABLE TO CHANGE ANY TOLERANCE OR OTHER DETAIL SPECIFIED ON THIS DRAWING NOTIFY THE PURCHASER PROMPTLY.							DIMENSIONS IN INCHES UNLESS OTHERWISE SPECIFIED.	
MAXIMUM ALLOWABLE TOLERANCES HAVE BEEN DETERMINED AND DEVIATIONS WILL BE CAUSE FOR REJECTION. REMOVE ALL BURRS AND SHARP EDGES.								
ISSUE	ITEM	CHANGED FROM	DATE	CN NO	DRAFTS	CHECKER	ENG APP	
Ø		REL. TO PROD.	JAN 30/68		RPL		[Signature]	
A		REV. AS PER CEMN	MAY 15/68	364	RPL		[Signature]	
B		REV. AS PER CEMN	7 DEC 72	1208	PVM		[Signature]	

TT10002-33A B

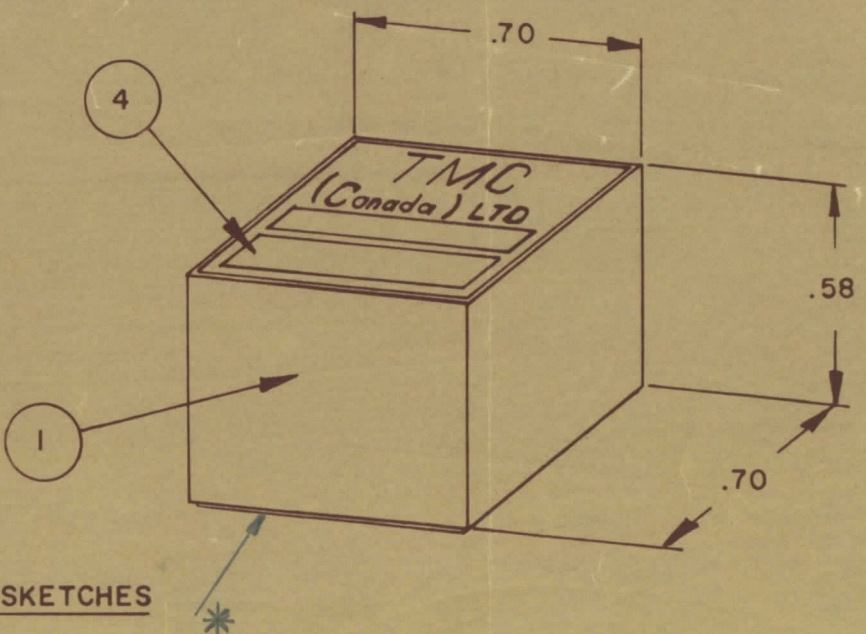
**NOTE:-**  
 1- COLOUR CODE INDICATES LAST TWO DIGITS AND LETTER IN TMC PART NO.  
 2- \* -INDICATES POSITION OF NAMEPLATE.

**ASSEMBLY INSTRUCTIONS:-**

- WIND 15 TURNS OF ITEM 3 AS SHOWN IN SKETCH 1.
- WIND     TURNS OF ITEM     AS SHOWN IN SKETCH 2.
- WIND     TURNS OF ITEM     AS SHOWN IN SKETCH 3.
- DIP COIL IN ITEM 5 AND BAKE FOR 1/2 HR. AT 125 °F.
- REMOVE 1 TURNS FROM THE PRIMARY IF NECESSARY TO OBTAIN THE FOLLOWING AT TEST FREQ. OF 7.9 MHZ.
  - INDUCTANCE IN  $\mu$ H. 4.5  $\pm$  .6
  - Q MINIMUM
- MAXIMUM NUMBER OF TURNS TO BE REMOVED 1
- MOUNT TRANSFORMER ON BASE & CONNECT WIRES TO CORRESPONDING PINS.
- INSTALL ITEM     &     BETWEEN PINS     &    .
- INSTALL ITEM 7 &     BETWEEN PINS 1 & 9.
- INSTALL ITEM 3 BETWEEN PINS 2 & 9 & 4.
- POT TRANSFORMER USING ITEM 6 AS PER SPEC. S10149.
- COLOUR CODE BOTTOM OF TRANSFORMER ORN, ORN, WHT.
- INSTALL NAMEPLATE.



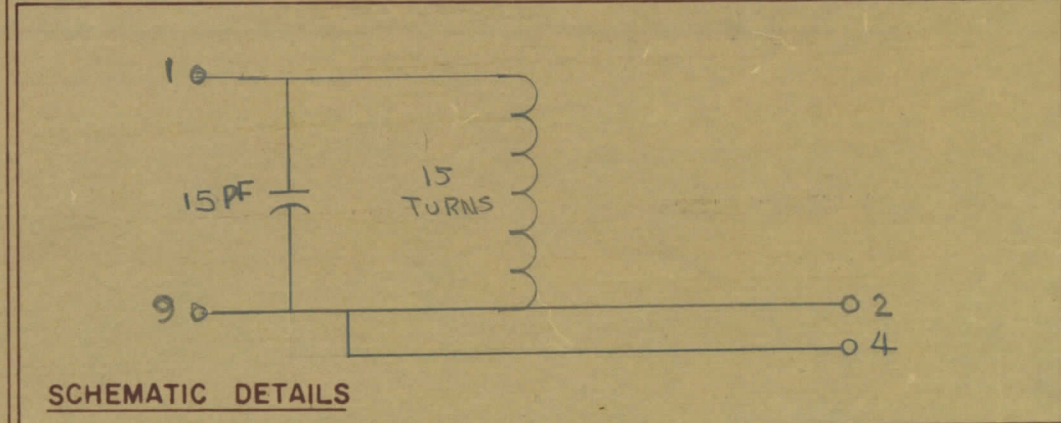
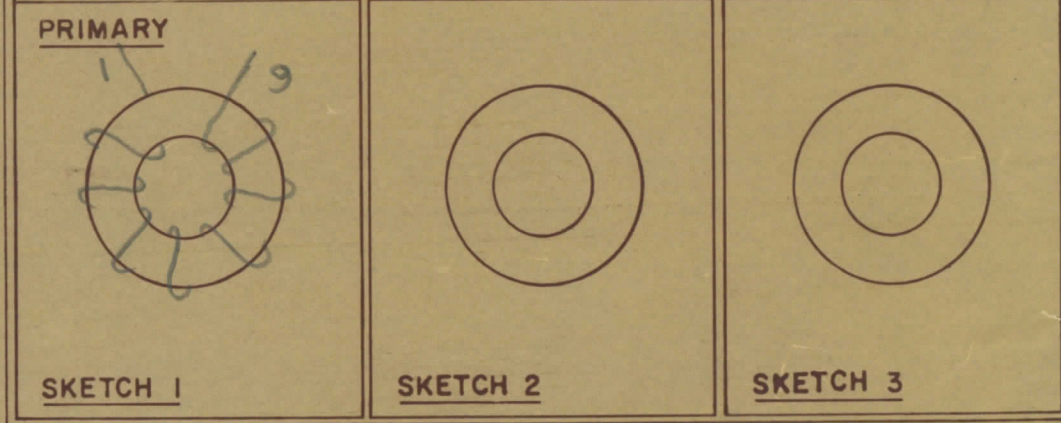
**COLOUR CODE MARKING**



TYPICAL FOR ALL SKETCHES

REQ	ITEM	PART NO.	DESCRIPTION	SYMBOL
1	1	BPI0011	COIL CASE ASSEMBLY	
1	2	CI-10011-1-Q2	CORE	
AR	3	WI-123-28	WIRE MAGNET	
1	4	NP 10157	NAMEPLATE	
AR	5	GL130	Q-DOPE	
AR	6	GL10005-3110 H	ENCAPSULANT	
1	7	CK05B X150K	CAPACITOR, FIXED	
	8			
	9			
	10			
	11			
	12			

-:DIRECTION OF WINDING TO BE CLOSELY FOLLOWED AS SHOWN IN SKETCHES. ALL LEADS TO BE 1 INCH LONG. TIN LEADS BACK 3/4 INCH.



STOCK SIZE		TMC (Canada) LIMITED OTTAWA ONTARIO	
MATERIAL		TRANSFORMER RF,	
WEIGHT PER PC		TUNED	
TYPE & TEMPER		E.T.	[Signature]
HEAT TREAT SPEC		RPL	[Signature]
FINISH & SPEC NO		FINAL APPROVAL	

TT10002-33A B

TOLERANCES UNLESS OTHERWISE SPECIFIED		SCALE
ALL OTHERS	DEC DIM $\frac{1}{64}$	GRILL, PUNCH, COMMERCIAL STOCK SIZES AND MANUFACTURERS TOLERANCES ARE NOT INCLUDED
	ANGULAR DIM $0^{\circ}30'$	

MODEL	PROJECT NO	ASSY NO	DATE
TTRR(3A) D	067/68		29 JAN 68
USED ON			



IF IT IS FOUND DESIRABLE TO CHANGE ANY TOLERANCE OR OTHER DETAIL SPECIFIED ON THIS DRAWING NOTIFY THE PURCHASER PROMPTLY

DIMENSIONS IN INCHES UNLESS OTHERWISE SPECIFIED

MAXIMUM ALLOWABLE TOLERANCES HAVE BEEN DETERMINED AND DEVIATIONS WILL BE CAUSE FOR REJECTION REMOVE ALL BURRS AND SHARP EDGES

ISSUE	ITEM	CHANGED FROM	DATE	CN NO	DRAFTS	CHECKER	ENG APP
0		REL. TO PROD.	JAN 30/68		RPL		NW
A		REV. AS PER CEMN	MAY 15/68	364	RPL		NW
B		REV. AS PER CEMN	7 DEC 72	1208	PVM		SDW

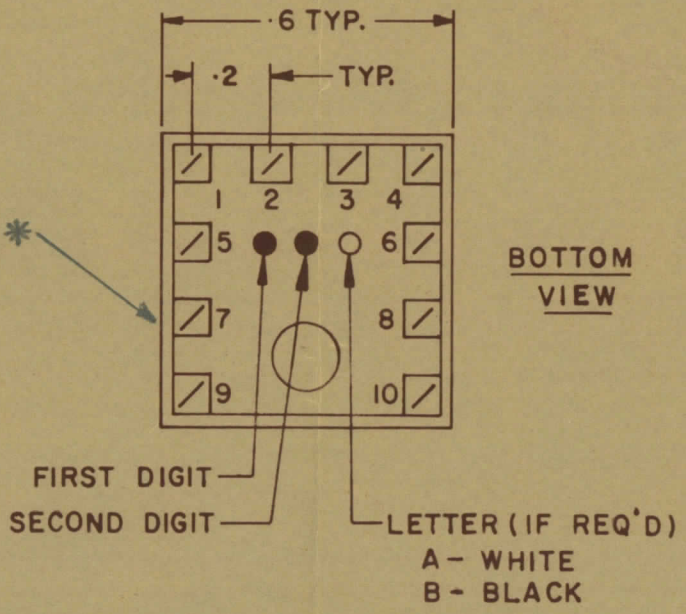
TT10002-33B B

**NOTE--:**

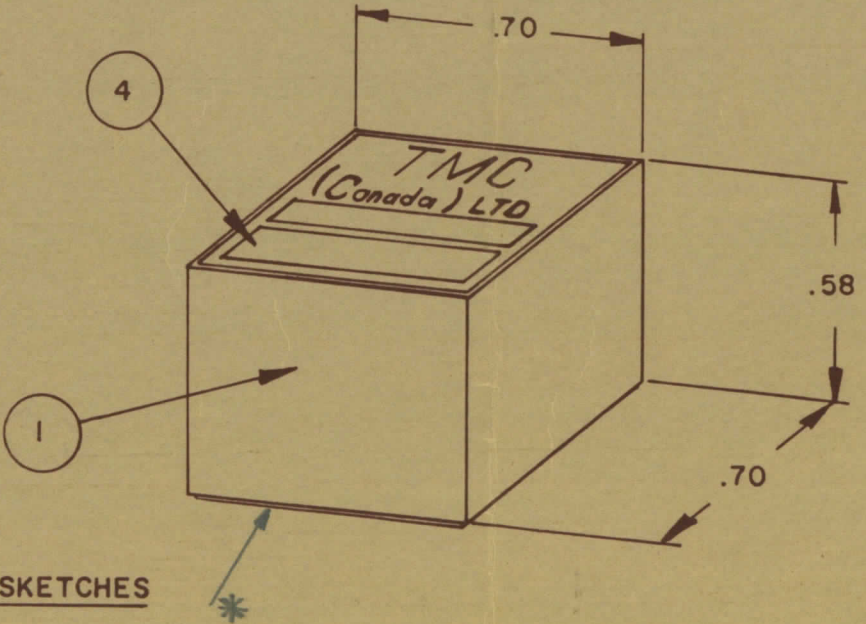
- 1- COLOUR CODE INDICATES LAST TWO DIGITS AND LETTER IN TMC PART NO.
- 2- \* -INDICATES POSITION OF NAMEPLATE.

**ASSEMBLY INSTRUCTIONS:-**

1. WIND 10 TURNS OF ITEM 3 AS SHOWN IN SKETCH 1.
2. WIND --- TURNS OF ITEM --- AS SHOWN IN SKETCH 2.
3. WIND --- TURNS OF ITEM --- AS SHOWN IN SKETCH 3.
4. DIP COIL IN ITEM 5 AND BAKE FOR 1/2 HR. AT 125 °F.
5. REMOVE 1 TURNS FROM THE PRIMARY IF NECESSARY TO OBTAIN THE FOLLOWING AT TEST FREQ. OF 7.9 MHZ.
  - a) INDUCTANCE IN  $\mu$ H. 1.5  $\pm$  .4
  - b) Q MINIMUM ---
6. MAXIMUM NUMBER OF TURNS TO BE REMOVED 1
7. MOUNT TRANSFORMER ON BASE & CONNECT WIRES TO CORRESPONDING PINS.
8. INSTALL ITEM --- & --- BETWEEN PINS --- & ---.
9. INSTALL ITEM 7 & --- BETWEEN PINS 1 & 9.
10. INSTALL ITEM 3 BETWEEN PINS 2 & 9 & 4
11. POT TRANSFORMER USING ITEM 6 AS PER SPEC. S10149.
12. COLOUR CODE BOTTOM OF TRANSFORMER ORN, ORN, BLK.
13. INSTALL NAMEPLATE.



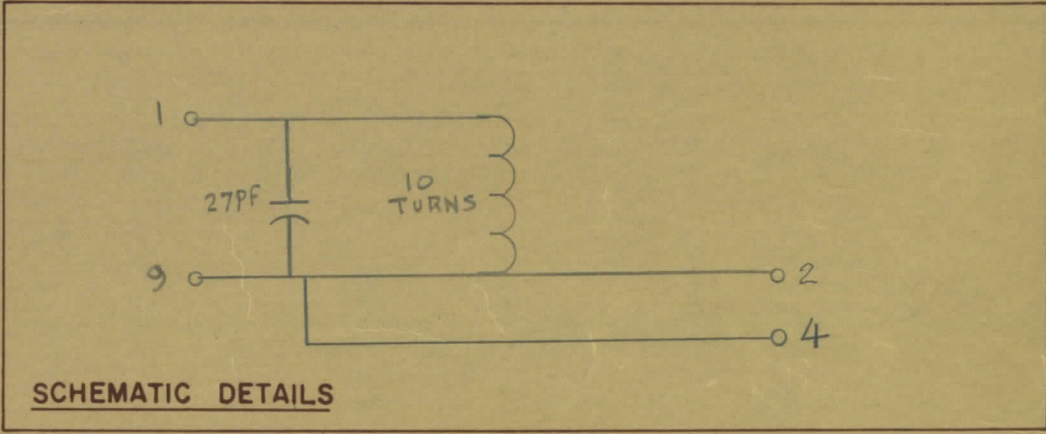
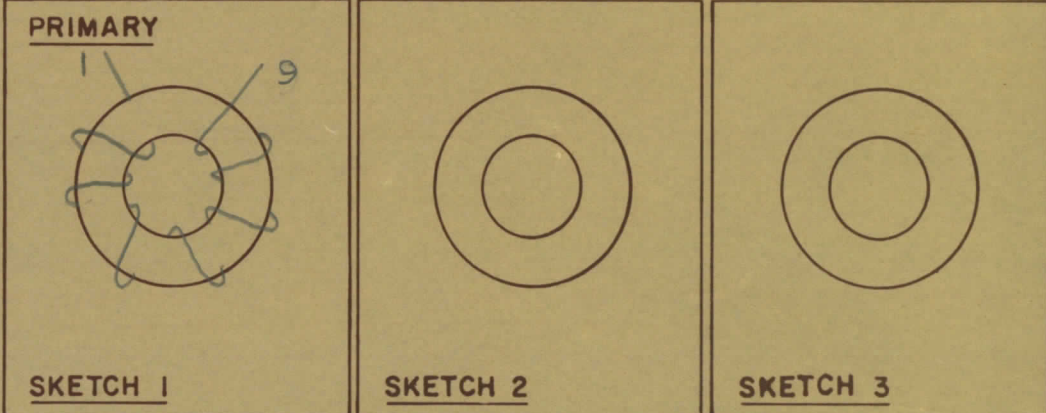
**COLOUR CODE MARKING**



TYPICAL FOR ALL SKETCHES

REQ	ITEM	PART NO	DESCRIPTION	SYMBOL
1	1	BPI0011	COIL CASE ASSEMBLY	
1	2	CI-10011-1-Q2	CORE	
AR	3	WI-123-28	WIRE MAGNET	
1	4	NP 10157	NAMEPLATE	
AR	5	GL130	Q-DOPE	
AR	6	GL10005-3110 H	ENCAPSULANT	
1	7	CK05B x 330K	CAPACITOR, FIXED	
	8			
	9			
	10			
	11			
	12			

---: DIRECTION OF WINDING TO BE CLOSELY FOLLOWED AS SHOWN IN SKETCHES. ALL LEADS TO BE 1 INCH LONG. TIN LEADS BACK 3/4 INCH.



TOLERANCES UNLESS OTHERWISE SPECIFIED	SCALE
ALL OTHERS	
DEC DIM	X = .05
FRAC DIM	XX = .01
ANGULAR DIM	XXX = .005

MODEL	PROJECT NO	ASSY NO	DATE
TTRR(3B)D	067/68		29 JAN 68

**TMC (Canada) LIMITED**  
OTTAWA ONTARIO

TRANSFORMER RF,  
TUNED

STOCK SIZE

MATERIAL WEIGHT PER PC

TYPE & TEMPER

HEAT TREAT SPEC

FINISH & SPEC NO

DRAWN: E.T. (Signature)  
CHECKED: RPL (Signature)  
FINAL APPROVAL: (Signature)

TT 10002-33B B