

IF IT IS FOUND DESIRABLE TO CHANGE ANY TOLERANCE OR OTHER DETAIL SPECIFIED ON THIS DRAWING NOTIFY THE PURCHASER PROMPTLY

DIMENSIONS IN INCHES UNLESS OTHERWISE SPECIFIED

MAXIMUM ALLOWABLE TOLERANCES HAVE BEEN DETERMINED AND DEVIATIONS WILL BE CAUSE FOR REJECTION REMOVE ALL BURRS AND SHARP EDGES

ISSUE	ITEM	CHANGED FROM	DATE	CN NO	DRAFTS	CHECKER	ENG APP
0		REL. TO PROD.	JAN 30/68		RPL		NW
A		REV. AS PER CEMN	MAY 15/68	364	RPL		NW
B		REV. AS PER CEMN	7 DEC 72	1208	PVM		SDW

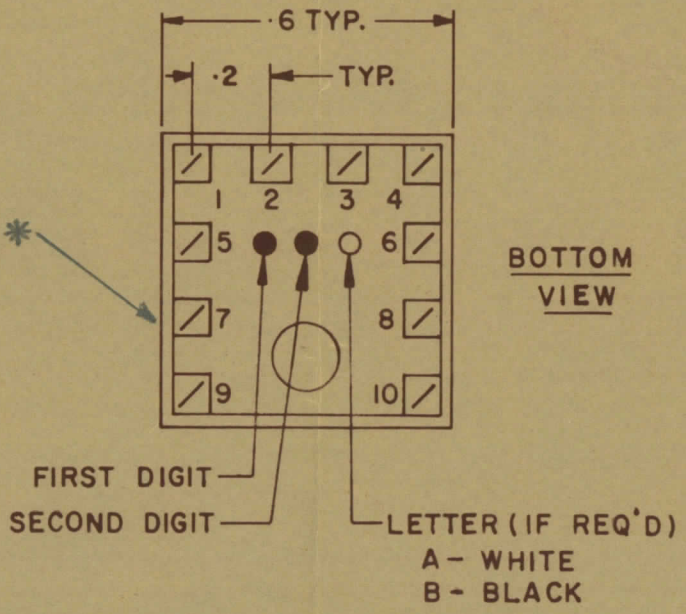
TT10002-33B B

NOTE:-

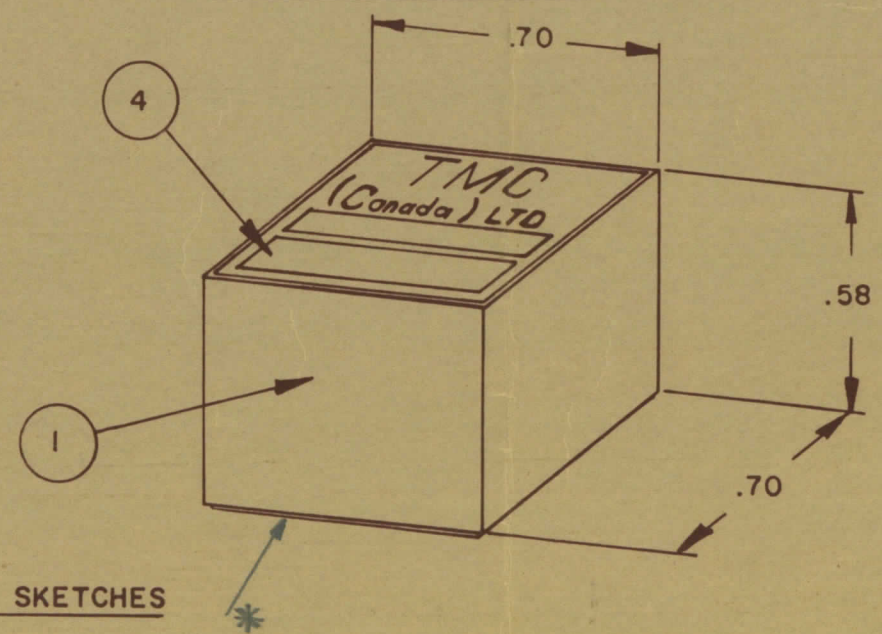
- 1- COLOUR CODE INDICATES LAST TWO DIGITS AND LETTER IN TMC PART NO.
- 2- * -INDICATES POSITION OF NAMEPLATE.

ASSEMBLY INSTRUCTIONS:-

1. WIND 10 TURNS OF ITEM 3 AS SHOWN IN SKETCH 1.
2. WIND --- TURNS OF ITEM --- AS SHOWN IN SKETCH 2.
3. WIND --- TURNS OF ITEM --- AS SHOWN IN SKETCH 3.
4. DIP COIL IN ITEM 5 AND BAKE FOR 1/2 HR. AT 125 °F.
5. REMOVE 1 TURNS FROM THE PRIMARY IF NECESSARY TO OBTAIN THE FOLLOWING AT TEST FREQ. OF 7.9 MHZ.
 - a) INDUCTANCE IN μ H. 1.5 \pm .4
 - b) Q MINIMUM ---
6. MAXIMUM NUMBER OF TURNS TO BE REMOVED 1
7. MOUNT TRANSFORMER ON BASE & CONNECT WIRES TO CORRESPONDING PINS.
8. INSTALL ITEM --- & --- BETWEEN PINS --- & ---.
9. INSTALL ITEM 7 & --- BETWEEN PINS 1 & 9.
10. INSTALL ITEM 3 BETWEEN PINS 2 & 9 & 4
11. POT TRANSFORMER USING ITEM 6 AS PER SPEC. S10149.
12. COLOUR CODE BOTTOM OF TRANSFORMER ORN, ORN, BLK.
13. INSTALL NAMEPLATE.



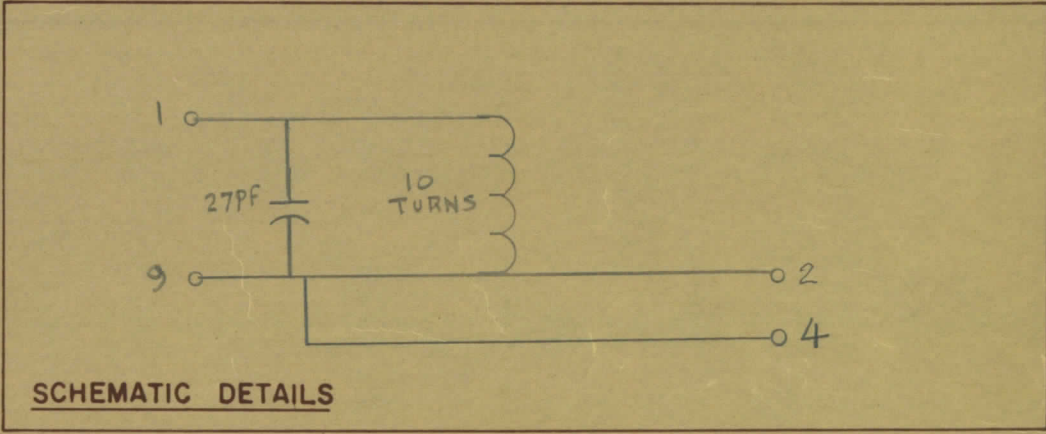
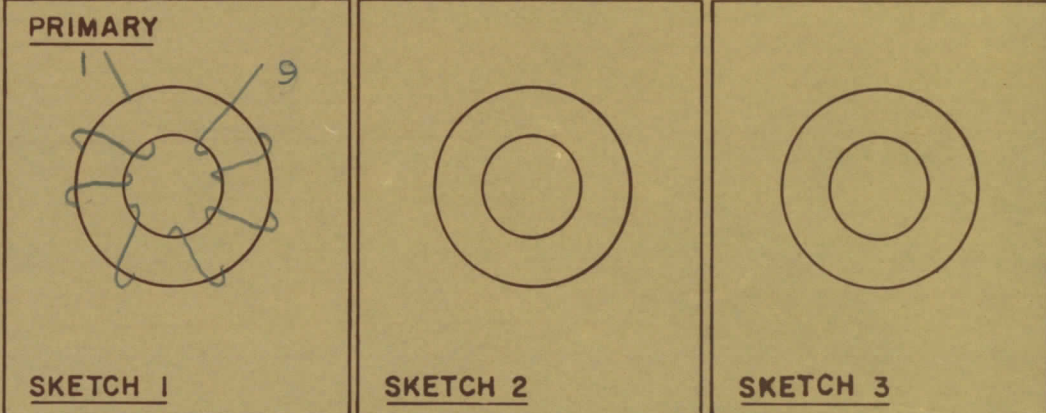
COLOUR CODE MARKING



TYPICAL FOR ALL SKETCHES

REQ	ITEM	PART NO	DESCRIPTION	SYMBOL
1	1	BPI0011	COIL CASE ASSEMBLY	
1	2	CI-10011-1-Q2	CORE	
AR	3	WI-123-28	WIRE MAGNET	
1	4	NP 10157	NAMEPLATE	
AR	5	GL130	Q-DOPE	
AR	6	GL10005-3110 H	ENCAPSULANT	
1	7	CK05B x 330K	CAPACITOR, FIXED	
	8			
	9			
	10			
	11			
	12			

—: DIRECTION OF WINDING TO BE CLOSELY FOLLOWED AS SHOWN IN SKETCHES. ALL LEADS TO BE 1 INCH LONG. TIN LEADS BACK 3/4 INCH.



TOLERANCES UNLESS OTHERWISE SPECIFIED	SCALE
ALL OTHERS	
DEC DIM	X = .05
FRAC DIM	XX = .01
ANGULAR DIM	XXX = .005

MODEL	PROJECT NO	ASSY NO	DATE
TTRR(3B)D	067/68		29 JAN 68

TMC (Canada) LIMITED
OTTAWA ONTARIO

TRANSFORMER RF,
TUNED

E.T. DRAWN
RPL CHECKED

FINAL APPROVAL

TT 10002-33B B