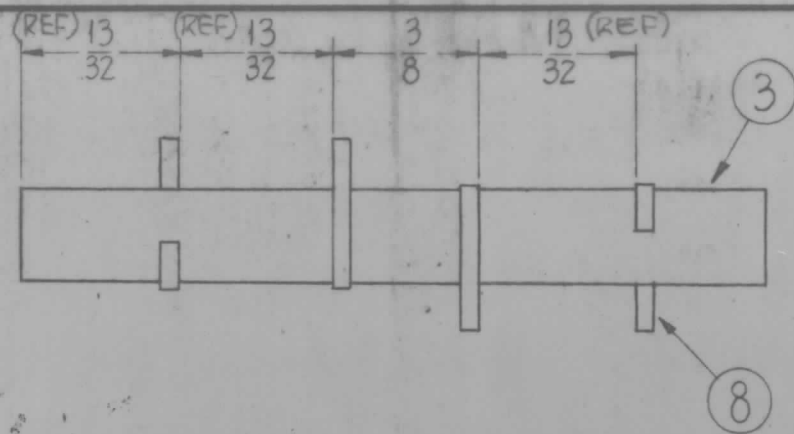
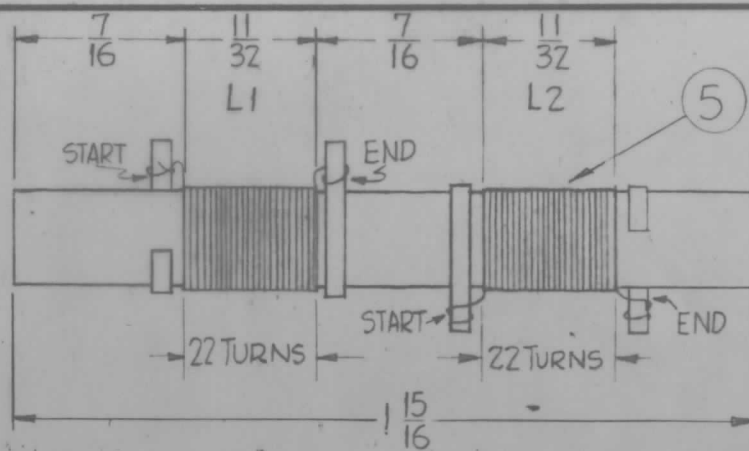


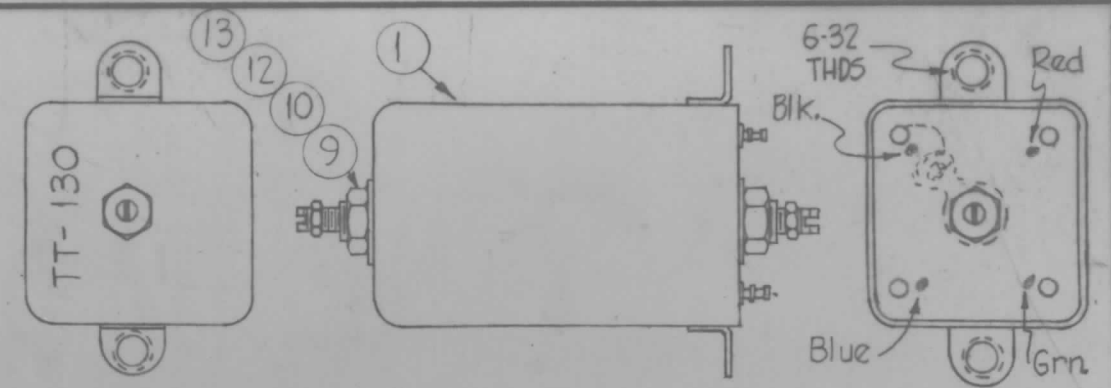
TT130  
A



(1) RING LAYOUT



(2) WINDING DETAIL



Stamp Canas shown 1/8" High Black Gothic.  
NOTE ~ Stamp TMC Insignia & Approval on side of can.

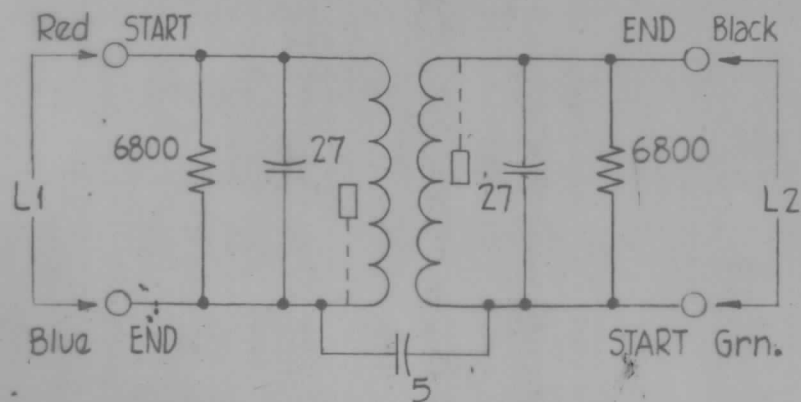
WINDING DATA

1. Assemble ring terminals on form as shown and stake with GL-104-2.
2. Wind coils as specified, staking and coating with GL-104-2.
3. Bake until hard for 1 hour at 215°F.
4. Test and assemble as shown.

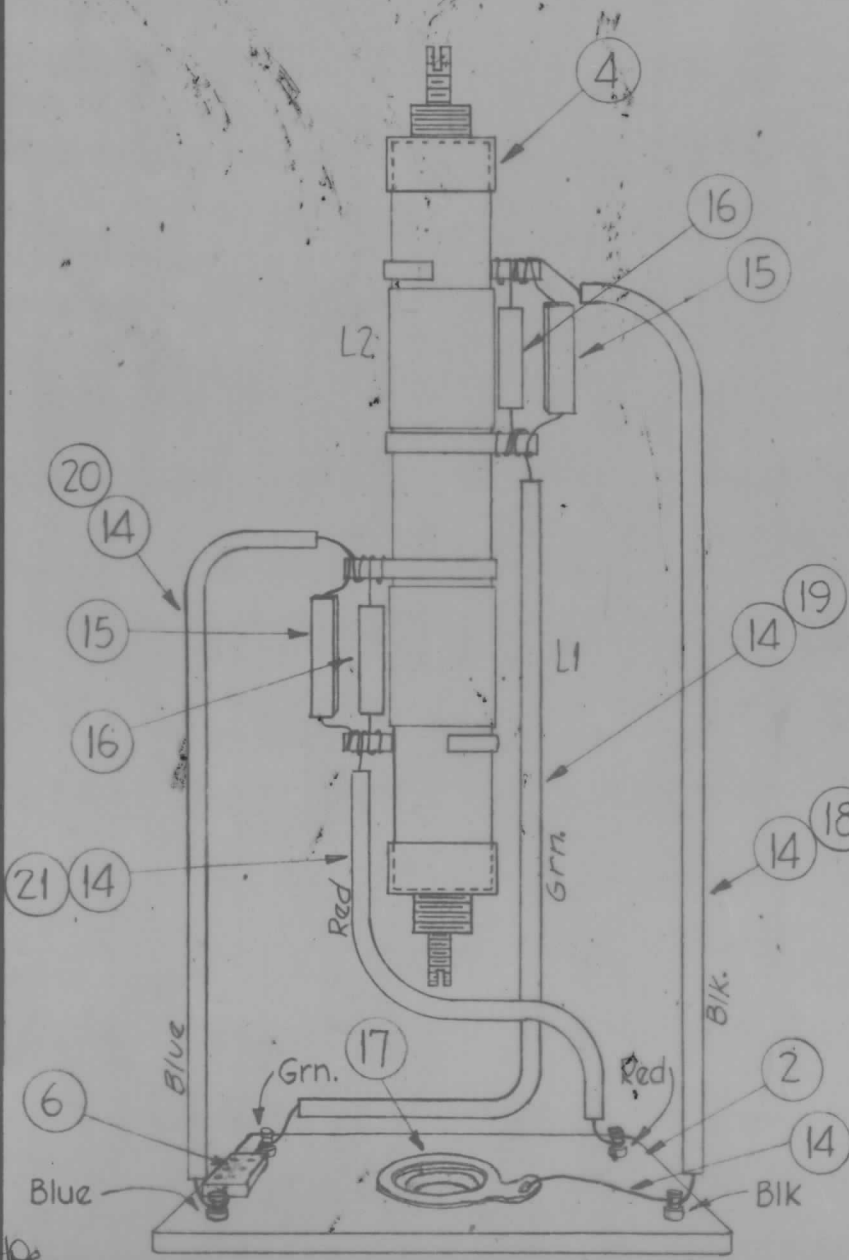
TEST DATA

$L_1 = L_2 = 2 \mu h \pm 10\%$   
 $Q = 55$  or Greater  
FREQ. = 7.9 mcs

Use Boonton Radfo Corp. Q Meter Model 160A or Equivalent.



SCHEMATIC



COLOR CODE TERMINAL BOARD AS SHOWN UPPER RIGHT.

REQ.	ITEM	PART NO.	DESCRIPTION	SYMBOL
X	21	PX-104-3-.034	Insulation, Sleeving	Red
X	20	-6-		Blue
X	19	-4-		Green
X	18	PX-104-1-.034	Insulation, Sleeving	Black
1	17	TE-104-3	Lug	
2	16	RC20GF682J	Resistor, Fixed	
2	15	CMI5C270J03	Capacitor, Fixed	
X	14	WL-100-7	Wire, Buss-Bar	
2	13	NTH0348BN6	Nut, Hex.	
2	12	CI-116-5	Core, Tuning	Red
X	11	BS-100	Solder, Soft	
2	10	NTH0832BN10	Nut, Hex.	
2	9	LW108MRN	Lockwasher	
4	8	TE-153-1	Terminal Ring	
X	7	GL-104-2	Insulex	
1	6	CMI5C050J03YY	Capacitor, Fixed	
X	5	WI-123-28	Wire, Enamelled	
2	4	SM-140-2	Bushing, Coil Mounting	
1	3	CF-122-1.93	Coil Form 1/4" O.D.	
1	2	PX-585-1	Terminal Board	
1	1	A-1950-1	Can Ass'y.	

REQ.	ITEM	PART NO.	DESCRIPTION	SYMBOL
THE TECHNICAL MATERIEL CORP. MAMARONECK, NEW YORK				
TRANSFORMER ASS'Y. 14.25 - 16.25 MC TRANSFORMER				
MATERIAL				
TYPE & TEMPER HEAT TREAT. SPEC. DRAWN CHECKER FINAL APPROVAL				
FINISH & SPEC. NO. ELEC. DES. APP. MECH. DES. APP.				

SYM	DESCRIPTION	DATE	CH. NO.	DRAFTS	CHECKER	ENG. APP.
A	REVISED & REDRAWN FROM SIZE	7.20.67	18365	WHO	EM	
UNLESS OTHERWISE SPECIFIED:		SCALE: Do Not Scale				
DIMENSIONS ARE IN INCHES		MAXIMUM ALLOWABLE TOLERANCES HAVE BEEN DETERMINED AND ANY DEVIATIONS WILL BE CAUSE FOR REJECTION. REMOVE ALL BURRS AND SHARP EDGES				
TOLERANCES ON FRACTIONS ± 1/64 DECIMALS ± .005 ANGLES ± 1/2°						

REQ. PER UNIT	MODEL	SECTION	ASS'Y. NO.	DATE
3	CHG-1		I.F.	4-6-61
USED ON				