

REQ. PER. UNIT	USED ON		
	MODEL	ASSY. NO.	DATE
3	SBE-3	AX-205	11-12-59

TT-100 B

ELECTRICAL SPECIFICATIONS

INDUCTANCE-

L1-205 μ hy (195 to 220)
 L2-205 μ hy (195 to 220)

Q

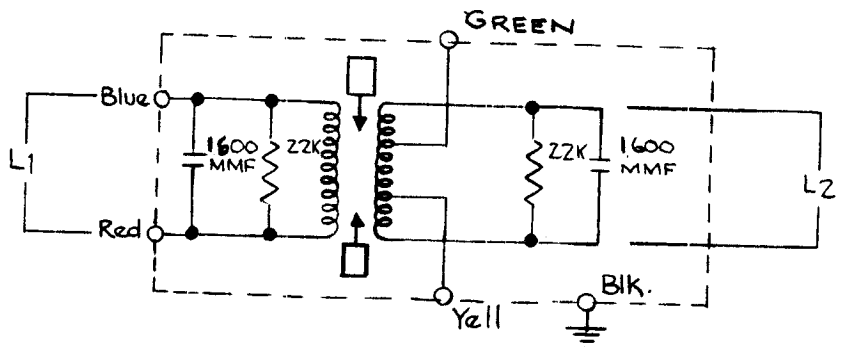
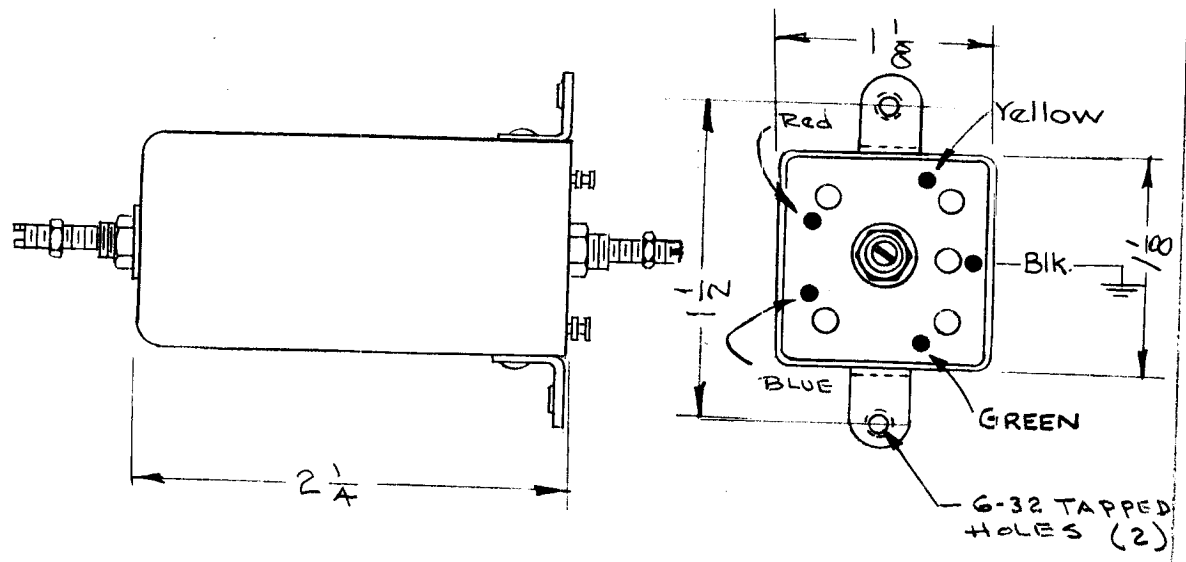
L1-35 or Greater at 790kc.
 L2-35 or Greater at 790kc.

TEST FREQ.

790 kc.

OPERATING FREQ

250kc to 270 Kc



ISSUE	ITEM	CHANGED FROM	DATE	CH. NO.	DRAFTS	CHECKER	ENG. APP.	REQ. ITEM	PART NO.	DESCRIPTION	SYMBOL
B	2	ON OPERATING FREQ. to 270Kc added	8-17-61	5449	G.D.L.	R.U.				THE TECHNICAL MATERIEL CORP. MAMARONECK, NEW YORK	TT-100 B
A	1	COLOR CHANGE GREEN WAS YELLOW	5-17-60	2283							
TOLERANCES			SCALE:		NPL		2A-1804		250 kc to 270, Kc		
DEC. DIM. \pm FRAC. DIM. \pm ANGULAR DIM. \pm			MAXIMUM ALLOWABLE TOLERANCES HAVE BEEN DETERMINED AND ANY DEVIATIONS WILL BE CAUSE FOR REJECTION. REMOVE ALL BURRS AND SHARP EDGES								
									DRAWN: [Signature] CHECKED: [Signature]		FINAL APPROVAL: [Signature]
									ELEC. DES. APP. MECH. DES. APP.		

IF IT IS FOUND DESIRABLE TO CHANGE ANY TOLERANCE OR OTHER DETAIL SPECIFIED ON THIS DRAWING NOTIFY THE PURCHASER PROMPTLY

MAXIMUM ALLOWABLE TOLERANCES HAVE BEEN DETERMINED AND DEVIATIONS WILL BE CAUSE FOR REJECTION REMOVE ALL BURRS AND SHARP EDGES

DIMENSIONS IN INCHES UNLESS OTHERWISE SPECIFIED

ISSUE	ITEM	CHANGED FROM	DATE	CH. NO.	DRAFTS	CHECKER	ENG. APP.
0							

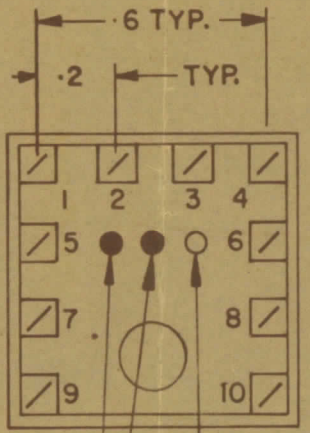
TT100

*Band 3B
T1*

NOTE:-
1- COLOUR CODE INDICATES LAST TWO DIGITS AND LETTER IN TMC PART NO.
2- * -INDICATES POSITION OF NAMEPLATE.

ASSEMBLY INSTRUCTIONS:-

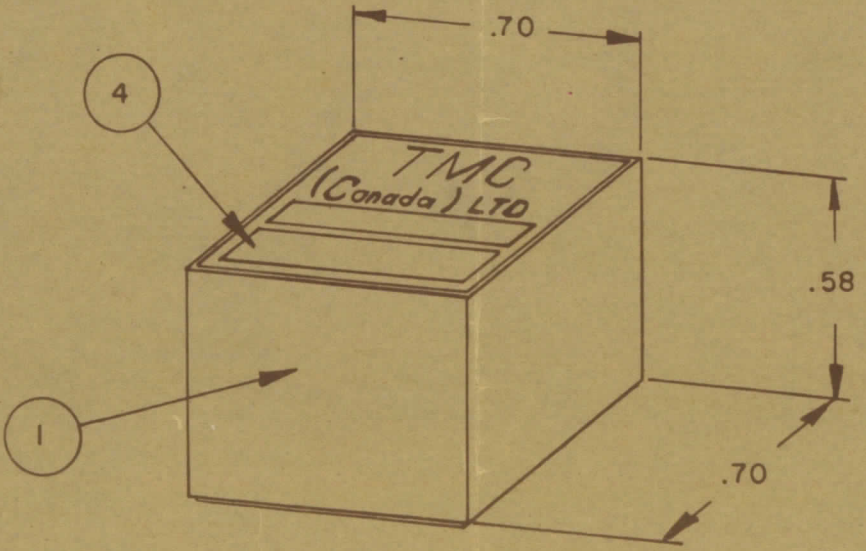
- WIND 8 TURNS OF ITEM 3 AS SHOWN IN SKETCH 1. *TWIST TAP*
- WIND 3 TURNS OF ITEM 3 AS SHOWN IN SKETCH 2.
- WIND _____ TURNS OF ITEM _____ AS SHOWN IN SKETCH 3.
- DIP COIL IN ITEM 5 AND BAKE FOR _____ HR. AT _____ OF.
- REMOVE 3 TURNS FROM THE PRIMARY IF NECESSARY TO OBTAIN THE FOLLOWING AT TEST FREQ. OF 7.9 MHz *across whole winding*
 - INDUCTANCE IN μH . 2.0 \pm 0.2
 - Q MINIMUM _____
- MAXIMUM NUMBER OF TURNS TO BE REMOVED 3 *(-1)*
- MOUNT TRANSFORMER ON BASE & CONNECT WIRES TO CORRESPONDING PINS.
- INSTALL ITEM 7 & _____ BETWEEN PINS 9 & 10.
- INSTALL ITEM 8 & _____ BETWEEN PINS 1 & 4.
- INSTALL ITEM _____ BETWEEN PINS _____ & _____.
- POT TRANSFORMER USING ITEM 6 AS PER SPEC. S 10149.
- COLOUR CODE BOTTOM OF TRANSFORMER _____, _____, _____.
- INSTALL NAMEPLATE.



BOTTOM VIEW

FIRST DIGIT
SECOND DIGIT
LETTER (IF REQ'D)
A - WHITE
B - BLACK

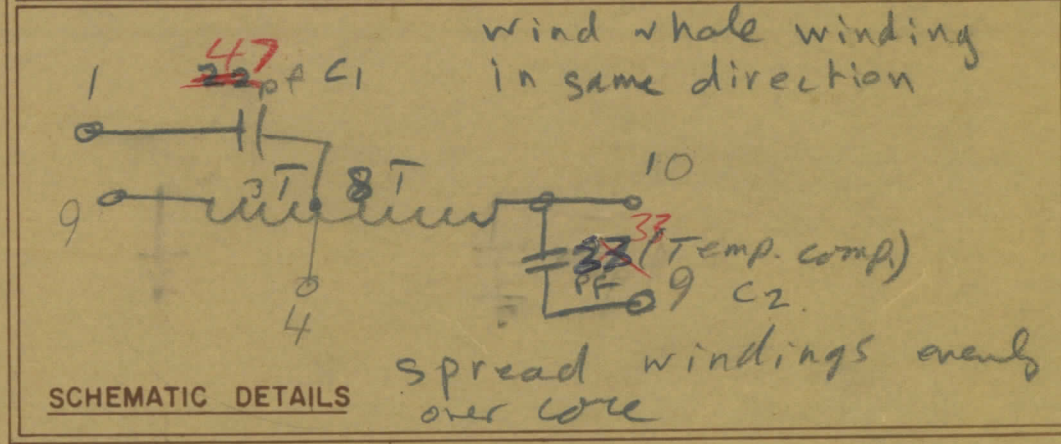
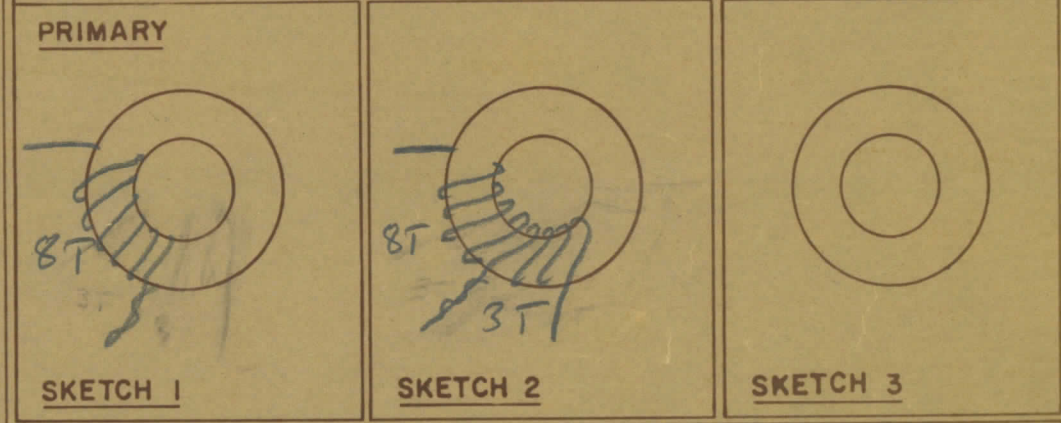
COLOUR CODE MARKING



TYPICAL FOR ALL SKETCHES

REQ.	ITEM	PART NO.	DESCRIPTION	SYMBOL
1	1	BPI0002-1	MODU - CON	
1	2	CI-10011-92	CORE	
AR	3	WI-	WIRE MAGNET	
1	4	NP 10157	NAMEPLATE	
AR	5	GL 130	Q-DOPE	
AR	6	GL 10005-3110 H	ENCAPSULANT	
	7	<i>CE10014-3</i>		<i>C2</i>
	8	<i>CM10002-C-4705</i>		<i>C1</i>
	9			
	10			
	11			
	12			

DIRECTION OF WINDING TO BE CLOSELY FOLLOWED AS SHOWN IN SKETCHES. ALL LEADS TO BE 1 INCH LONG. TIN LEADS BACK 3/4 INCH.



STOCK SIZE		TMC (Canada) LIMITED OTTAWA ONTARIO	
MATERIAL		TRANSFORMER RF, <i>3B</i>	
WEIGHT PER PC		TUNED	
TYPE & TEMPER		DRAWN	ELEC DES APP
HEAT TREAT SPEC		CHECKED	MECH DES APP
FINISH & SPEC. NO.		FINAL APPROVAL	
		<i>T1</i>	TT 100

TOLERANCES UNLESS OTHERWISE SPECIFIED	SCALE
ALL OTHERS	
DEC DIM	X = .05
FRACTIONAL DIM	XX = .01
ANGULAR DIM	.XXX = .005
	0°30'

DRILL, PUNCH, COMMERCIAL STOCK	MODEL	PROJECT NO.	ASSY NO.	DATE
SIZES AND MANUFACTURERS TOLERANCES ARE NOT INCLUDED				
USED ON				

IF IT IS FOUND DESIRABLE TO CHANGE ANY TOLERANCE OR OTHER DETAIL SPECIFIED ON THIS DRAWING NOTIFY THE PURCHASER PROMPTLY.

MAXIMUM ALLOWABLE TOLERANCES HAVE BEEN DETERMINED AND DEVIATIONS WILL BE CAUSE FOR REJECTION REMOVE ALL BURRS AND SHARP EDGES

DIMENSIONS IN INCHES UNLESS OTHERWISE SPECIFIED

ISSUE	ITEM	CHANGED FROM	DATE	CN NO	DRAFTS	CHECKER	ENG APP
0							

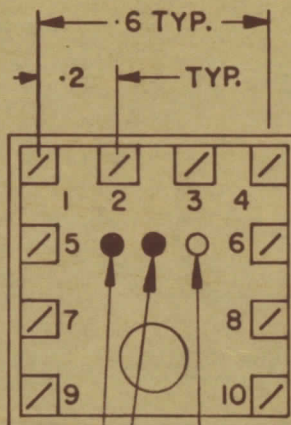
TT100

NOTE:-

- 1- COLOUR CODE INDICATES LAST TWO DIGITS AND LETTER IN TMC PART NO.
- 2- * -INDICATES POSITION OF NAMEPLATE.

ASSEMBLY INSTRUCTIONS:-

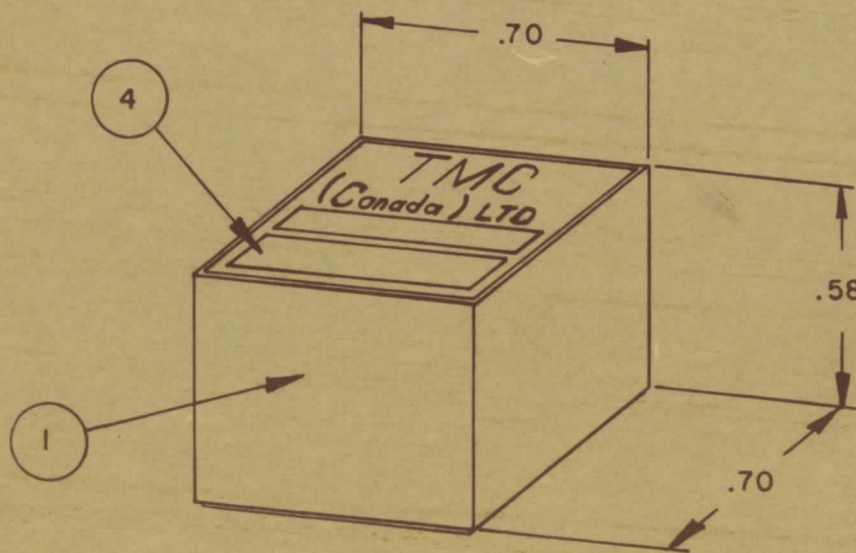
1. WIND _____ TURNS OF ITEM _____ AS SHOWN IN SKETCH 1.
2. WIND _____ TURNS OF ITEM _____ AS SHOWN IN SKETCH 2.
3. WIND _____ TURNS OF ITEM _____ AS SHOWN IN SKETCH 3.
4. DIP COIL IN ITEM 5 AND BAKE FOR _____ HR. AT _____ °F.
5. REMOVE _____ TURNS FROM THE PRIMARY IF NECESSARY TO OBTAIN THE FOLLOWING AT TEST FREQ. OF _____
 - a) INDUCTANCE IN μ H. _____ \pm _____.
 - b) Q MINIMUM _____.
6. MAXIMUM NUMBER OF TURNS TO BE REMOVED _____.
7. MOUNT TRANSFORMER ON BASE & CONNECT WIRES TO CORRESPONDING PINS.
8. INSTALL ITEM _____ & _____ BETWEEN PINS _____ & _____.
9. INSTALL ITEM _____ & _____ BETWEEN PINS _____ & _____.
10. INSTALL ITEM _____ BETWEEN PINS _____ & _____.
11. POT TRANSFORMER USING ITEM 6 AS PER SPEC. S 10149.
12. COLOUR CODE BOTTOM OF TRANSFORMER _____, _____, _____.
13. INSTALL NAMEPLATE.



BOTTOM VIEW

FIRST DIGIT
SECOND DIGIT
LETTER (IF REQ'D)
A - WHITE
B - BLACK

COLOUR CODE MARKING

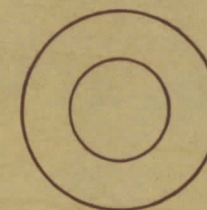


TYPICAL FOR ALL SKETCHES

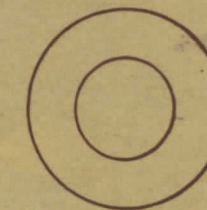
REQ	ITEM	PART NO	DESCRIPTION	SYMBOL
1	1	BPI0002-1	MODU - CON	
1	2	CI-10011-	CORE	
AR	3	WI-	WIRE MAGNET	
1	4	NP 10157	NAMEPLATE	
AR	5	GL 130	Q-DOPE	
AR	6	GL10005-3110 H	ENCAPSULANT	
	7			
	8			
	9			
	10			
	11			
	12			

—: DIRECTION OF WINDING TO BE CLOSELY FOLLOWED AS SHOWN IN SKETCHES. ALL LEADS TO BE 1 INCH LONG. TIN LEADS BACK 3/4 INCH.

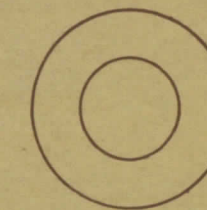
PRIMARY



SKETCH 1



SKETCH 2



SKETCH 3

SCHEMATIC DETAILS

TMC (Canada) LIMITED
OTTAWA ONTARIO

TRANSFORMER RF, TUNED

STOCK SIZE		
MATERIAL	WEIGHT PER PC	
TYPE & TEMPER		
HEAT TREAT SPEC	CHECKED	FINAL APPROVAL
FINISH & SPEC NO		

TOLERANCES UNLESS OTHERWISE SPECIFIED	SCALE
ALL OTHERS	
DEC DIM	X = .05
FRAC DIM	XX = .01
ANGULAR DIM	XXX = .005

DRILL, PUNCH, COMMERCIAL STOCK SIZES AND MANUFACTURERS TOLERANCES ARE NOT INCLUDED	MODEL	PROJECT NO	ASSY NO	DATE

TT 100

IF IT IS FOUND DESIRABLE TO CHANGE ANY TOLERANCE OR OTHER DETAIL SPECIFIED ON THIS DRAWING NOTIFY THE PURCHASER PROMPTLY.

MAXIMUM ALLOWABLE TOLERANCES HAVE BEEN DETERMINED AND DEVIATIONS WILL BE CAUSE FOR REJECTION. REMOVE ALL BURRS AND SHARP EDGES.

DIMENSIONS IN INCHES UNLESS OTHERWISE SPECIFIED.

ISSUE	ITEM	CHANGED FROM	DATE	DN NO	DRAFTS	CHECKER	ENG APP
0							

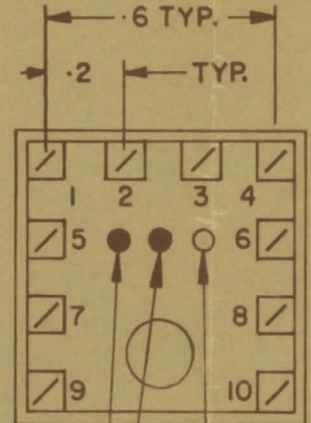
TT100

*Band 3B
T2.*

NOTE:-
1- COLOUR CODE INDICATES LAST TWO DIGITS AND LETTER IN TMC PART NO.
2- * -INDICATES POSITION OF NAMEPLATE.

ASSEMBLY INSTRUCTIONS:-

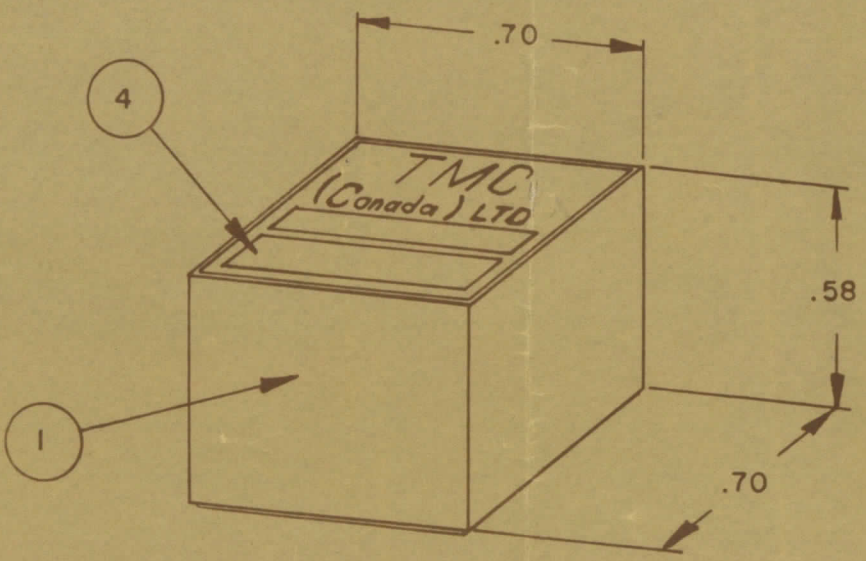
- WIND 11 TURNS OF ITEM 3 AS SHOWN IN SKETCH 1.
- WIND 4 TURNS OF ITEM 3 AS SHOWN IN SKETCH 2.
- WIND _____ TURNS OF ITEM _____ AS SHOWN IN SKETCH 3.
- DIP COIL IN ITEM 5 AND BAKE FOR _____ HR. AT _____ OF.
- REMOVE 3 TURNS FROM THE PRIMARY IF NECESSARY TO OBTAIN THE FOLLOWING AT TEST FREQ. OF 7.9 MHz.
a) INDUCTANCE IN μH . 2.0 ± 0.2.
b) Q MINIMUM _____.
- MAXIMUM NUMBER OF TURNS TO BE REMOVED 3.
- MOUNT TRANSFORMER ON BASE & CONNECT WIRES TO CORRESPONDING PINS.
- INSTALL ITEM 7 & _____ BETWEEN PINS 2 & 4.
- INSTALL ITEM 8 & _____ BETWEEN PINS 4 & 10.
- INSTALL ITEM _____ BETWEEN PINS _____ & _____.
- POT TRANSFORMER USING ITEM 6 AS PER SPEC. S10149.
- COLOUR CODE BOTTOM OF TRANSFORMER _____, _____, _____.
- INSTALL NAMEPLATE.



BOTTOM VIEW

FIRST DIGIT
SECOND DIGIT
LETTER (IF REQ'D)
A - WHITE
B - BLACK

COLOUR CODE MARKING

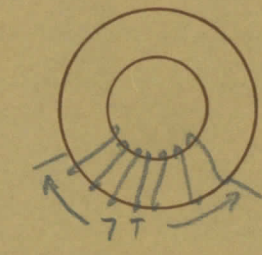


TYPICAL FOR ALL SKETCHES

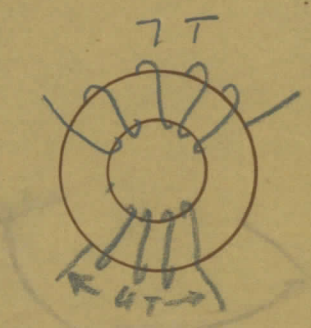
REQ	ITEM	PART NO	DESCRIPTION	QTY
I	1	BPI0002-1	MODU - CON	
I	2	CI-10011-Q2	CORE	
AR	3	WI-	WIRE MAGNET	
I	4	NP 10157	NAMEPLATE	
AR	5	GL 130	Q-DOPE	
AR	6	GL 10005-3110 H	ENCAPSULANT	
	7	<i>R0204F6825</i>		
	8	<i>CC 10014-3</i>		
	9			
	10			
	11			
	12			

—: DIRECTION OF WINDING TO BE CLOSELY FOLLOWED AS SHOWN IN SKETCHES. ALL LEADS TO BE 1 INCH LONG. TIN LEADS BACK 3/4 INCH.

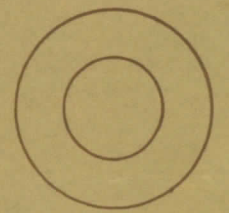
PRIMARY



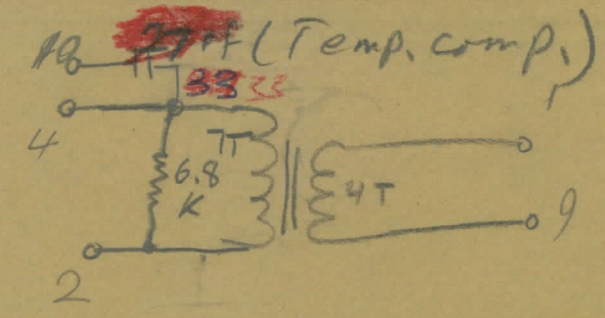
SKETCH 1



SKETCH 2



SKETCH 3



SCHEMATIC DETAILS

spread windings evenly over core

TOLERANCES UNLESS OTHERWISE SPECIFIED

ALL OTHERS	DEC DIM	FRAC DIM	ANGULAR DIM	SCALE	DRILL, PUNCH, COMMERCIAL STOCK	SIZES AND MANUFACTURERS	TOLERANCES ARE NOT INCLUDED
		$\frac{1}{64}$	$0^{\circ}30'$				

MODEL	PROJECT NO	ASSY NO	DATE

TMC (Canada) LIMITED
OTTAWA ONTARIO

TRANSFORMER RF, 3B

TUNED

DRAWN: _____ ELEC DES APP: _____ MECH DES APP: _____

CHECKED: _____ FINAL APPROVAL: _____

FINISH & SPEC. NO: _____

T2 TT100

IF IT IS FOUND DESIRABLE TO CHANGE ANY TOLERANCE OR OTHER DETAIL SPECIFIED ON THIS DRAWING NOTIFY THE PURCHASER PROMPTLY.

DIMENSIONS IN INCHES UNLESS OTHERWISE SPECIFIED

MAXIMUM ALLOWABLE TOLERANCES HAVE BEEN DETERMINED AND DEVIATIONS WILL BE CAUSE FOR REJECTION REMOVE ALL BURRS AND SHARP EDGES.

ISSUE	ITEM	CHANGED FROM	DATE	CN. NO.	DRAFTS	CHECKER	ENG. APP.
0							

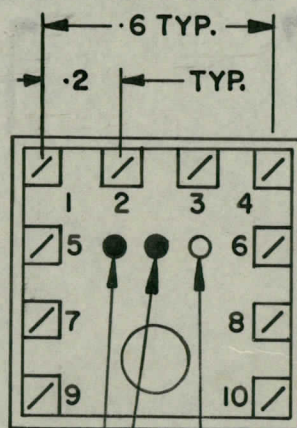
TT100

NOTE:-

- 1- COLOUR CODE INDICATES LAST TWO DIGITS AND LETTER IN TMC PART NO.
- 2- * -INDICATES POSITION OF NAMEPLATE.

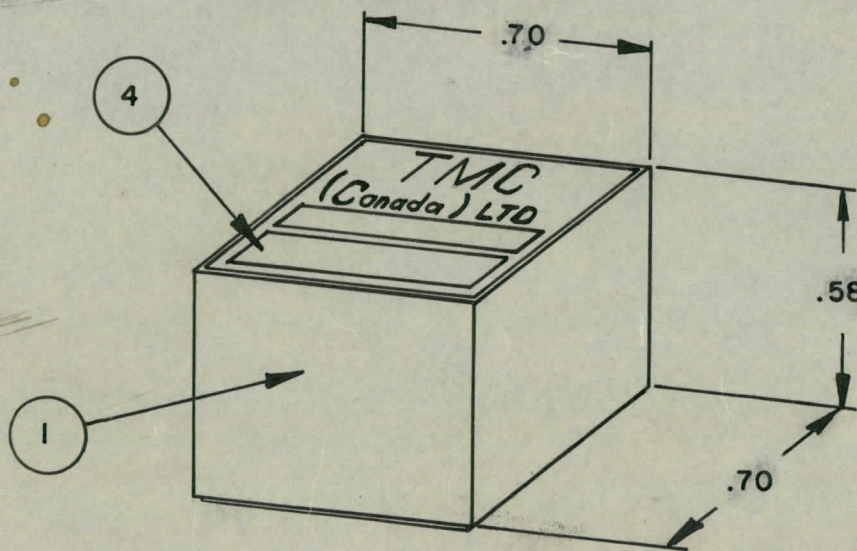
ASSEMBLY INSTRUCTIONS:-

1. WIND _____ TURNS OF ITEM _____ AS SHOWN IN SKETCH 1.
2. WIND _____ TURNS OF ITEM _____ AS SHOWN IN SKETCH 2.
3. WIND _____ TURNS OF ITEM _____ AS SHOWN IN SKETCH 3.
4. DIP COIL IN ITEM 5 AND BAKE FOR _____ HR. AT _____ °F.
5. REMOVE _____ TURNS FROM THE PRIMARY IF NECESSARY TO OBTAIN THE FOLLOWING AT TEST FREQ. OF _____
 - a) INDUCTANCE IN μ H. _____ \pm _____
 - b) Q MINIMUM _____
6. MAXIMUM NUMBER OF TURNS TO BE REMOVED _____
7. MOUNT TRANSFORMER ON BASE & CONNECT WIRES TO CORRESPONDING PINS
8. INSTALL ITEM _____ BETWEEN PINS _____ & _____
9. INSTALL ITEM _____ BETWEEN PINS _____ & _____
10. INSTALL ITEM _____ BETWEEN PINS _____ & _____
11. ROT TRANSFORMER USING ITEM 6 AS PER SPEC. S 10149.
12. COLOUR CODE BOTTOM OF TRANSFORMER _____
13. INSTALL NAMEPLATE.



FIRST DIGIT
SECOND DIGIT
LETTER (IF REQ'D)
A - WHITE
B - BLACK

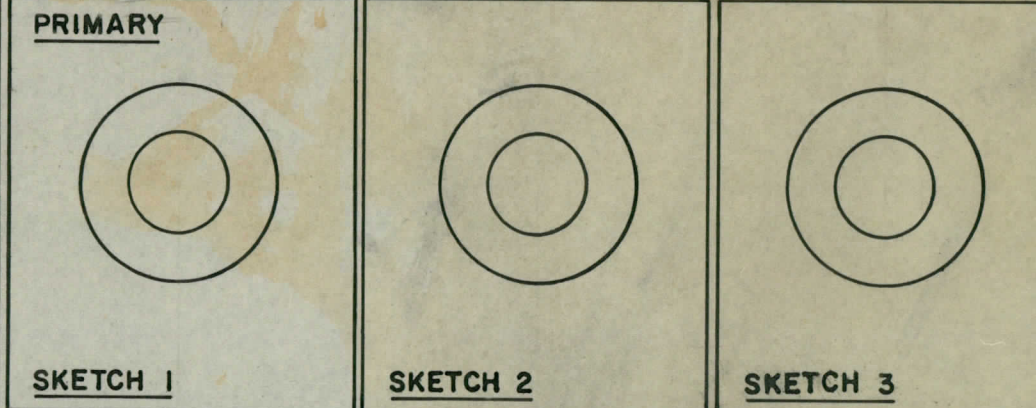
COLOUR CODE MARKING



TYPICAL FOR ALL SKETCHES

REQ.	ITEM	PART NO.	DESCRIPTION	SYMBOL
I	1	BPI0002-1	MODU - CON	
I	2	CI-10011-	CORE	
AR	3	WI-	WIRE MAGNET	
I	4	NP 10157	NAMEPLATE	
AR	5	GL 130	Q-DOPE	
AR	6	GL 10005-3110 H	ENCAPSULANT	
	7			
	8			
	9			
	10			
	11			
	12			

-:DIRECTION OF WINDING TO BE CLOSELY FOLLOWED AS SHOWN IN SKETCHES. ALL LEADS TO BE 1 INCH LONG. TIN LEADS BACK 3/4 INCH.



SCHEMATIC DETAILS

TOLERANCES UNLESS OTHERWISE SPECIFIED	SCALE:
ALL DEC. DIM. \pm .05	DRILL, PUNCH, COMMERCIAL STOCK SIZES AND MANUFACTURERS TOLERANCES ARE NOT INCLUDED.
OTHERS FRACTIONAL DIM. \pm 1/64	
ANGULAR DIM. \pm 0°30'	

MODEL	PROJECT NO.	ASSY. NO.	DATE

TMC (Canada) LIMITED
OTTAWA ONTARIO

TRANSFORMER RF, TUNED

STOCK SIZE		DRAWN	ELEC. DES. APP.	MECH. DES. APP.
MATERIAL	WEIGHT PER PC.	CHECKED	FINAL APPROVAL	
TYPE & TEMPER				
HEAT TREAT SPEC.				

TT 100

USED ON