

IF IT IS FOUND DESIRABLE TO CHANGE ANY TOLERANCE OR OTHER DETAIL SPECIFIED ON THIS DRAWING NOTIFY THE PURCHASER PROMPTLY.

STANDARD DRAWING

TS-102 D

MAXIMUM ALLOWABLE TOLERANCES HAVE BEEN DETERMINED AND DEVIATIONS WILL BE CAUSE FOR REJECTION.
REMOVE ALL BURRS AND SHARP EDGES

USED ON

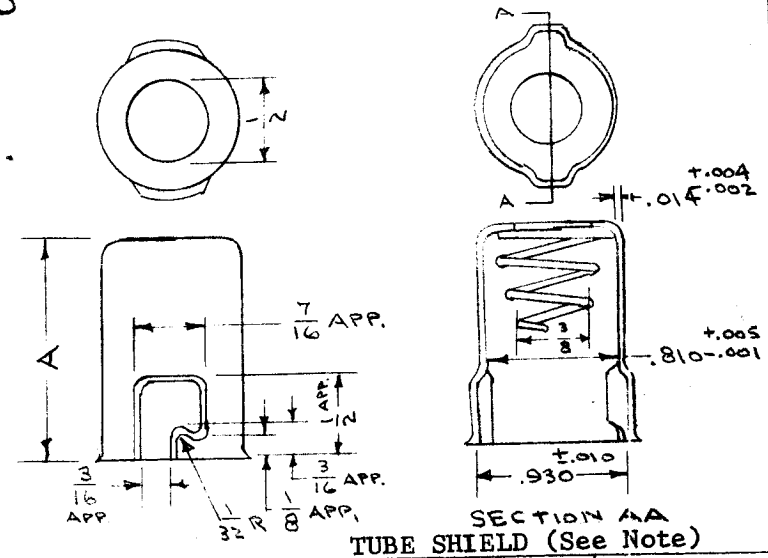
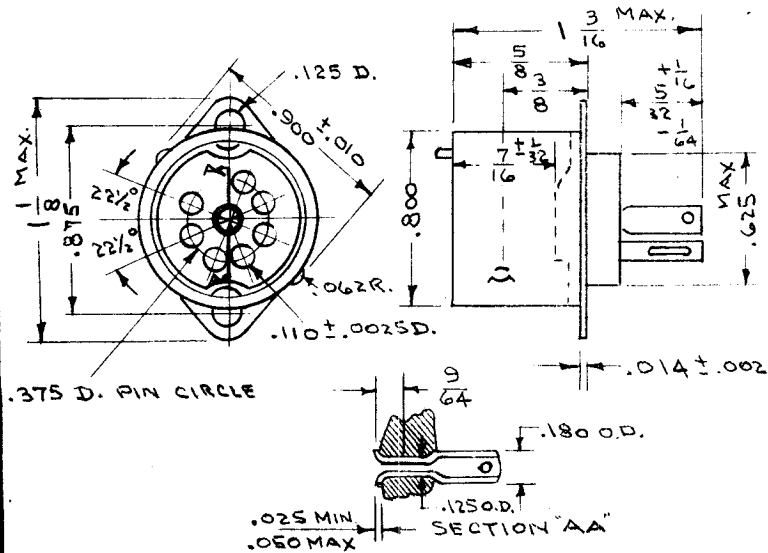
MODEL

PROJECT NO.

ASS'Y. NO.

DATE

THE SOCKET SHIELD BASE SHALL BE BRASS, NICKEL PLATED
THE CENTER SHIELD AND CONTACT TABS SHALL BE HOT TIN DIPPED.
THE TUBE SHIELD SHALL BE BRASS OR COPPER, NICKEL PLATED.



Note:

For Black Tube Shields
add - P35A to type number.
Example: TS-102U01-P35A

Denotes Black
CADMIUM PLATE

SECTION AA
TUBE SHIELD (See Note)

TYPE	A
TS102 U01	1 3/8
TS102 U02	1 3/4
TS102 U03	2 1/4

SEE TMC TS128 FOR MIL
TYPE TUBE SHIELDS

SOCKETS SHALL BE IN ACCORDANCE WITH
MIL S-12883

TYPE		INSULATING MATERIAL		REQ.	ITEM	PART NO.	DESCRIPTION		SYMBOL	
TS 102 C01		CERAMIC, GRADE L-4B OR BETTER. JAN-I-10				#	THE TECHNICAL MATERIEL CORP. MAMARONECK. NEW YORK			
TS-102 P01		MOULDED THERMOSETTING PLASTIC				#	SOCKET & SHIELD			
		MIL-M-14 TYPE MFE				#	7 PIN MINIATURE			
D.		NOTES CLARIFIED		10.4.66	16981	WHO	QTS			
ISSUE	ITEM	CHANGED FROM	DATE	CN. NO.	DRAFTS	CHECKER	ENG. APP.			
TOLERANCES			SCALE							
ALL OTHERS	DEC. DIM. ±	FRAC. DIM. ±	ANGULAR DIM. ±	DRILL, PUNCH, COMMERCIAL STOCK SIZES AND MANUFACTURERS TOLERANCES ARE NOT INCLUDED.						
								O.D.D. 8-26-53		
								G.T.O		
								DRAWN		
								ELEC. DES. APP.		
								MECH. DES. APP.		
								CHECKED		
								FINAL APPROVAL		
								TS-102		
								D		

IF IT IS FOUND DESIRABLE TO CHANGE ANY TOLERANCE OR OTHER DETAIL SPECIFIED ON THIS DRAWING NOTIFY THE PURCHASER PROMPTLY.

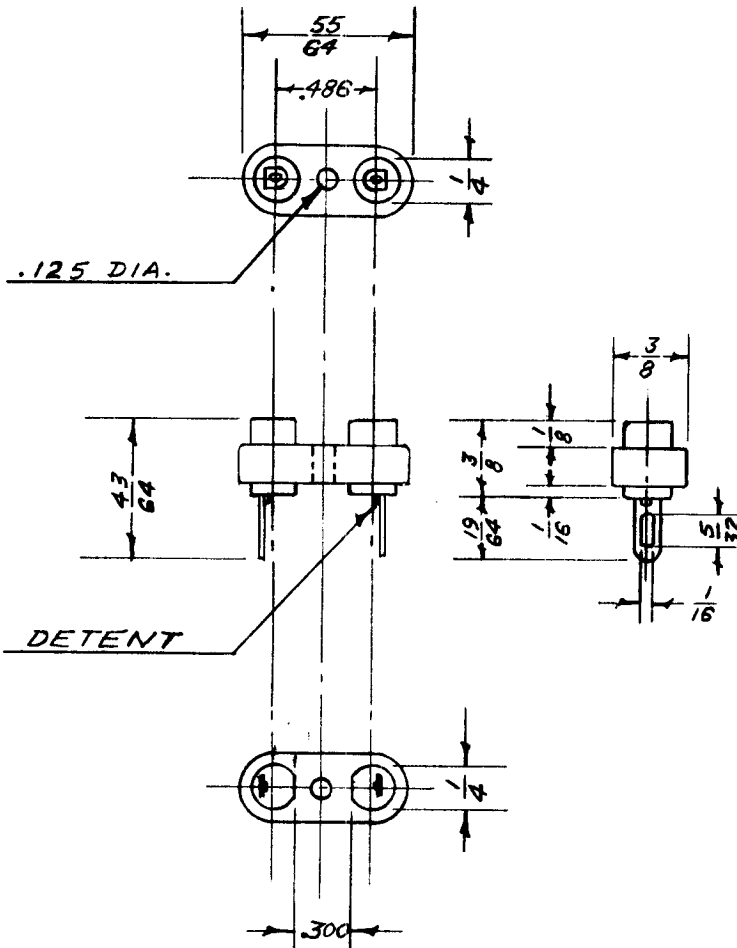
STANDARD DRAWING

TS-104 A

MAXIMUM ALLOWABLE TOLERANCES HAVE BEEN DETERMINED AND DEVIATIONS WILL BE CAUSE FOR REJECTION. REMOVE ALL BURRS AND SHARP EDGES

USED ON

MODEL	PROJECT NO.	ASS'Y. NO.	DATE
-------	-------------	------------	------



TMC NO.	CAT. NO.	CONTACTS	PLATING
TS-104-1	8879	PHOSPHOR BRONZE	CADMIUM
TS-104-2	9006	BERYLLIUM COPPER	SILVER

NOTE: FOR USE WITH ALL CRYSTALS HAVING .050 PIN DIA. & .486 SPACING BETWEEN PINS.

DIM. FOR REF. ONLY

REF: H. H. EBY INC.

REQ.	ITEM	PART NO.	DESCRIPTION	SYMBOL
		SS	THE TECHNICAL MATERIEL CORP.	
		STOCK SIZE	MAMARONECK. NEW YORK	
		STEATITE	SOCKET, CRYSTAL	
		MATERIAL	WEIGHT PER PC.	
		GRADE L-5		
		JAN-1-10		
		TYPE & TEMPER	16 12-15-53	G.T.C.
			DRAWN	ELEC. DES. APP. MECH. DES. APP.
		HEAT TREAT. SPEC.	CHECKED	FINAL APPROVAL
		FINISH & SPEC. NO.		TS-104 A

A	1	REDRAWN W/CHART REV.	7/15/53	1	16	JAD	WJC
ISSUE	ITEM	CHANGED FROM	DATE	CN. NO.	DRAFTS	CHECKER	ENG. APP.

TOLERANCES

SCALE FULL

ALL OTHERS
DEC. DIM. ±
FRAC. DIM. ±
ANGULAR DIM. ±

DRILL, PUNCH, COMMERCIAL STOCK SIZES AND MANUFACTURERS TOLERANCES ARE NOT INCLUDED.

IF IT IS FOUND DESIRABLE TO CHANGE ANY TOLERANCE OR OTHER DETAIL SPECIFIED ON THIS DRAWING NOTIFY THE PURCHASER PROMPTLY.

STANDARD DRAWING

TS-105

MAXIMUM ALLOWABLE TOLERANCES HAVE BEEN DETERMINED AND DEVIATIONS WILL BE CAUSE FOR REJECTION. REMOVE ALL BURRS AND SHARP EDGES

RELEASED

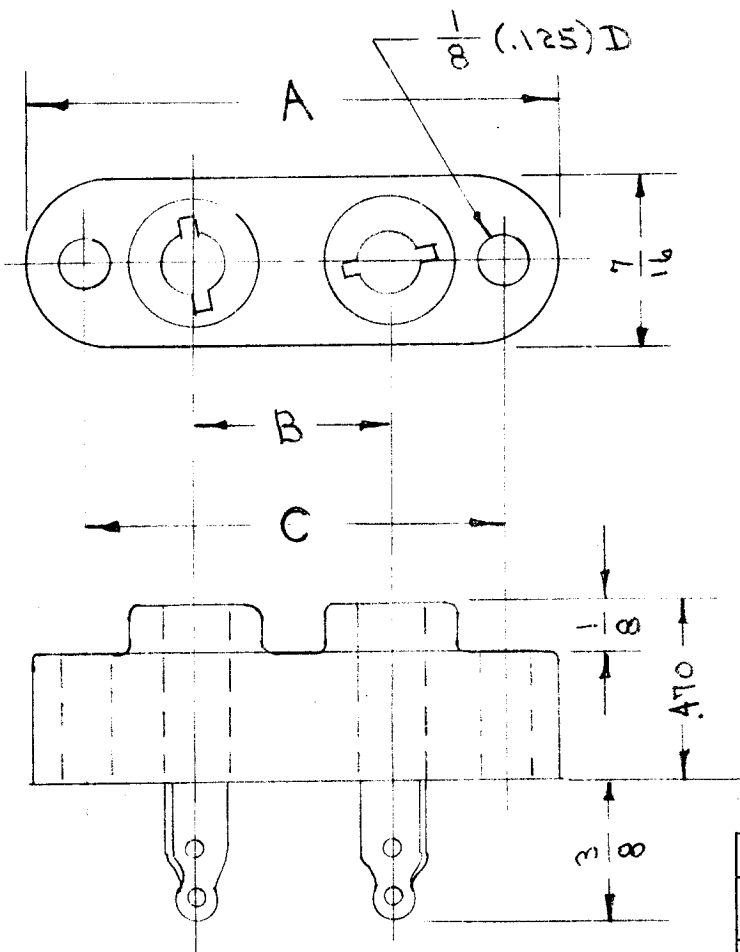
USED ON

MODEL

PROJECT NO.

ASS'Y. NO.

DATE



TMC NO.	CAT. NO.	A	B	C
TS-105-1	K-33102	1 ³ / ₈	.487	1 ³ / ₃₂

DIMENSIONS FOR REF. ONLY

REF.: JAMES MILLEN Co.

CONTACTS- PHOSPHOR BRONZE-
SILVER PLATED.

REQ.	ITEM	PART NO.	DESCRIPTION	SYMBOL
	#		THE TECHNICAL MATERIEL CORP. MAMARONECK, NEW YORK	
		STOCK SIZE		
		STEATITE	SOCKET, CRYSTAL	
		MATERIAL		
		WEIGHT PER PC.		
		TYPE & TEMPER	C.D.D. 9-1252	G.T.O. <i>[Signature]</i>
			DRAWN	ELEC. DES. APP. MECH. DES. APP.
			10-27602	<i>[Signature]</i>
		HEAT TREAT. SPEC.	CHECKED	FINAL APPROVAL
				TS-105
		FINISH & SPEC. NO.		

ISSUE	ITEM	CHANGED FROM	DATE	CN. NO.	DRAFTS	CHECKER	ENG. APP.

TOLERANCES

SCALE TWICE SIZE

ALL OTHERS
DEC. DIM. $\pm .005$
FRAC. DIM. $\pm \frac{1}{64}$
ANGULAR DIM. \pm

DRILL, PUNCH, COMMERCIAL STOCK
SIZES AND MANUFACTURERS
TOLERANCES ARE NOT INCLUDED.

IF IT IS FOUND DESIRABLE TO CHANGE ANY TOLERANCE OR OTHER DETAIL SPECIFIED ON THIS DRAWING NOTIFY THE PURCHASER PROMPTLY.

STANDARD DRAWING

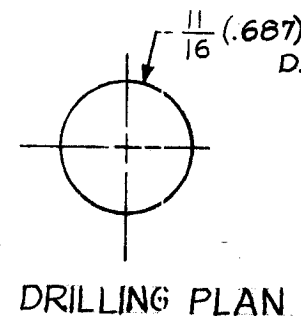
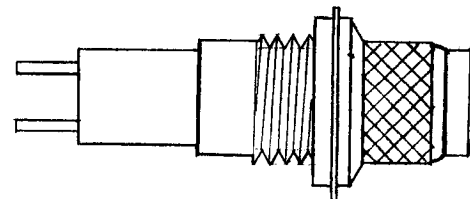
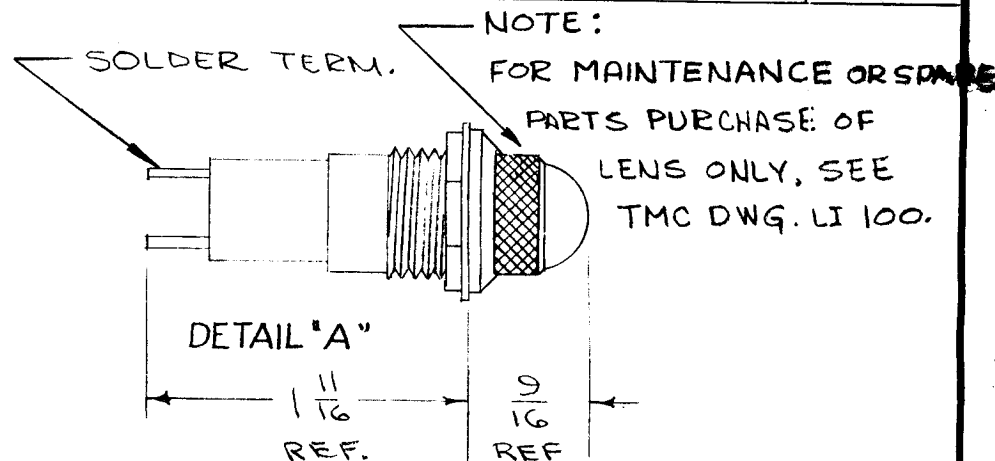
TS 106 E

MAXIMUM ALLOWABLE TOLERANCES HAVE BEEN DETERMINED AND DEVIATIONS WILL BE CAUSE FOR REJECTION. REMOVE ALL BURRS AND SHARP EDGES

USED ON

MODEL PROJECT NO. ASS'Y. NO. DATE

TMC NO.	MFGS PART NUMBER	LENS	DETAIL
TS-106-1	55-0410-0111-102	RED, BACK FROSTED	A
TS-106-2	55-0410-0137-102	CLEAR, COLORLESS UNFROSTED	A
TS-106-3	55-0410-0112-102	GREEN BACK FROSTED	A
TS-106-4	55-0410-0113-102	AMBER (YEL) BACK FROSTED	A
TS-106-5	55-0410-0114-102	BLUE BACK FROSTED	A
TS-106-6	55-0410-0115-102	WHITE BACK FROSTED	A
TS-106-7	55-0410-0116-102	LIGHT (YEL) BACK FROSTED	A
TS-106-8	55-0410-0376-102	YELLOW, BLK LETTER "L"	B
TS-106-9	55-0410-0376-102	YELLOW, BLK. LETTER "U"	B



E		P/N CHART REVISED P/N DETAIL ADDED PICTORIAL REVISED	5/9/66	16324	4/10/66	JCS	2
D	1	S401-153 ADDED; DIAL LIGHT CO. DELETED; DET. 'B' ADDED; DET. COLUMN ADDED; TS106-8 & 9 ADDED	4/27/64	11293	9/1/64	@	0
C	1	CHART COMPLETELY REVISED	11/27-62	7725		FLO	
B	1	FINISH W.H. NICKEL ADDED	5-27-60	2368		JCS	
A	1	NOTE ADDED RE: CAP	10/18/60	1		CDD	
		REDRAWN - NO CHANGE	8/27/54			C.D.D.	
ISSUE	ITEM	CHANGED FROM	DATE	CN. NO.	DRAFTS	CHECKER	ENG. APP.

TOLERANCES

SCALE S401-153

ALL OTHERS
DEC. DIM. \pm
FRAC. DIM. \pm
ANGULAR DIM. \pm

DRILL, PUNCH, COMMERCIAL STOCK SIZES AND MANUFACTURERS TOLERANCES ARE NOT INCLUDED.

REQ.	ITEM	PART NO.	DESCRIPTION	SYMBOL
		#	THE TECHNICAL MATERIEL CORP. MAMARONECK. NEW YORK	
		STOCK SIZE		
		#	LIGHT, INDICATOR, MINIATURE BAYONET	
		MATERIAL	WEIGHT PER PC.	
		#		
		TYPE & TEMPER	CDD 8-21-5A	G.T.O.
		#	DRAWN	ELEC. DES. APP.
		HEAT TREAT. SPEC.	W.C.	MECH. DES. APP.
		METAL SHELL: WHITE NICKEL	CHECKED	FINAL APPROVAL
		FINISH & SPEC. NO.		

TS 106 E

IF IT IS FOUND DESIRABLE TO CHANGE ANY TOLERANCE OR OTHER DETAIL SPECIFIED ON THIS DRAWING NOTIFY THE PURCHASER PROMPTLY.

STANDARD DRAWING

TS-107 E

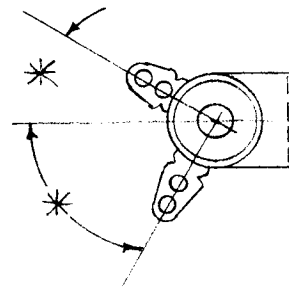
MAXIMUM ALLOWABLE TOLERANCES HAVE BEEN DETERMINED AND DEVIATIONS WILL BE CAUSE FOR REJECTION. REMOVE ALL BURRS AND SHARP EDGES

USED ON

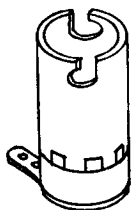
MODEL PROJECT NO. ASS'Y. NO. DATE

TMC NO.	DESCRIPTION
TS-107-1	CLIP WITH EARS DOWNWARD
TS-107-2	BRACKET WITH 5/32 MTG. HOLE
TS-107-3	NO MTG BRACKET
TS-107-4	NO MTG BRACKET ONE TERMINAL/CASE GROUND

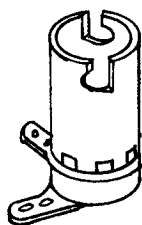
SUPERCEDES TS-109



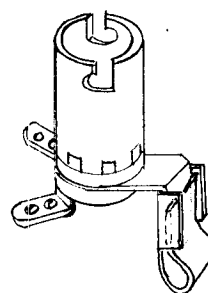
DIM. FOR REF. ONLY.



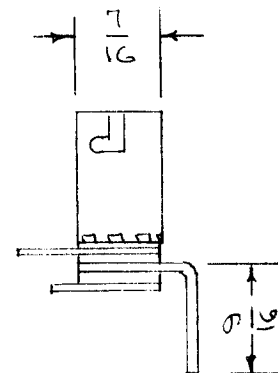
TS-107-4



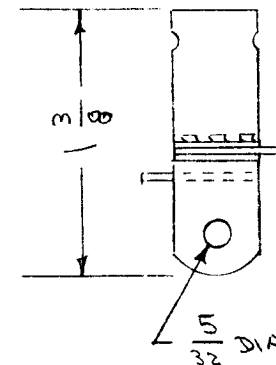
TS-107-3



TS-107-1



TS-107-2



ELEC. SPEC:
1000V HIPOT TEST

MAT'L:
BODY - STEEL, CADMIUM PLATE
TERM. - BRASS HOT TIN
WASHER - PHENOLIC
* ANG DIM. OF LUGS MAY VARY BETWEEN 60° & 90°

REQ.	ITEM	PART NO.	DESCRIPTION	SYMBOL
			THE TECHNICAL MATERIEL CORP. MAMARONECK. NEW YORK	
		STOCK SIZE	LAMPHOLDER	
		MATERIAL WEIGHT PER PC.	MINIATURE BAYONET	
		TYPE & TEMPER	CDID. 2-15-54	G.T.O
		HEAT TREAT. SPEC.	DRAWN	ELEC. DES. APP. MECH. DES. APP.
		FINISH & SPEC. NO.	CHECKED	FINAL APPROVAL

E	ADDED NOTE *	9-11-68	19237	HS	JA	RFM	DR
ISSUE	ITEM	CHANGED FROM	DATE	CN. NO.	DRAFTS	CHECKER	ENG. APP.

TOLERANCES		SCALE 5/101-155 (TYPE 700)
ALL OTHERS	DEC. DIM. ± FRAC. DIM. ± ANGULAR DIM. ±	DRILL, PUNCH, COMMERCIAL STOCK SIZES AND MANUFACTURERS TOLERANCES ARE NOT INCLUDED.

TS-107 E

IF IT IS FOUND DESIRABLE TO CHANGE ANY TOLERANCE OR OTHER DETAIL SPECIFIED ON THIS DRAWING NOTIFY THE PURCHASER PROMPTLY.

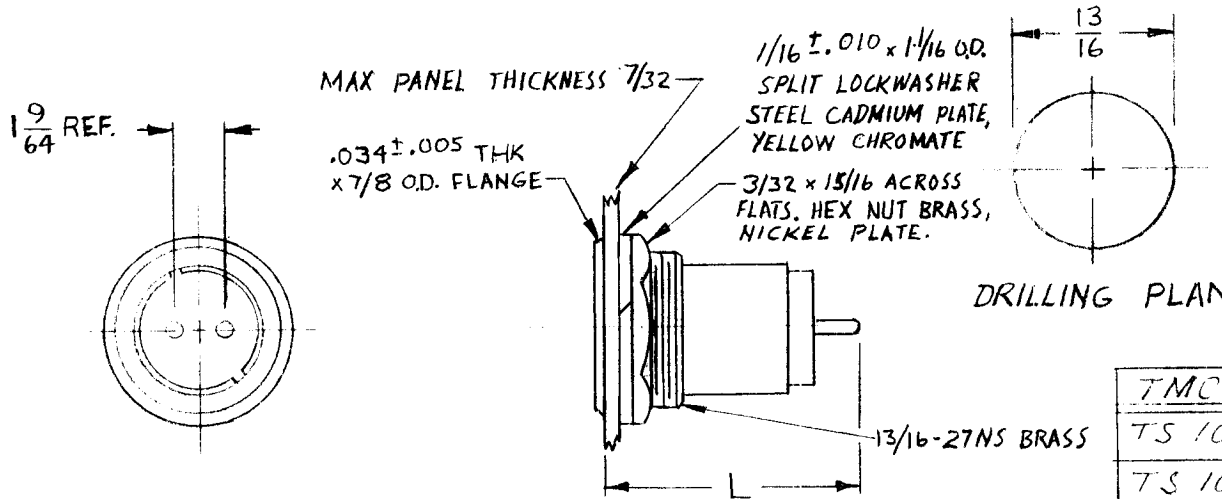
STANDARD DRAWING

TS 108 A

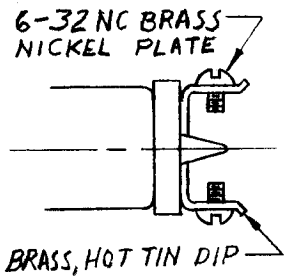
MAXIMUM ALLOWABLE TOLERANCES HAVE BEEN DETERMINED AND DEVIATIONS WILL BE CAUSE FOR REJECTION. REMOVE ALL BURRS AND SHARP EDGES

USED ON

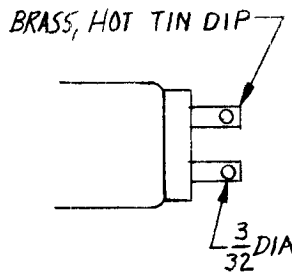
MODEL	PROJECT NO.	ASS'Y. NO.	DATE
VTG	103	A	7-29-52



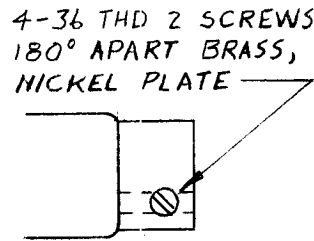
TMC NO.	CAT. NO.	L. MAX	TYPE
TS 108-1	65-52	1-15/32	BINDING SCREW TERM.
TS 108-2	65-2	1-11/32	SOLDERING TERM.
TS 108-3	65-20	1-9/32	SET SCREW TERM.



TS108-1



TS108-2



TS108-3

REQ.	ITEM	PART NO.	DESCRIPTION	SYMBOL
		11	THE TECHNICAL MATERIEL CORP. MAMARONECK, NEW YORK	
		STOCK SIZE		
		MATERIAL	WEIGHT PER PC.	
		TYPE & TEMPER		
		HEAT TREAT. SPEC.		
		FINISH & SPEC. NO.		

SOCKET - BAYONET

REVISION

DRAWN: [Signature] ELEC. DES. APP. MECH. DES. APP.

CHECKED: [Signature] FINAL APPROVAL: [Signature]

TS 108 A

ISSUE	ITEM	CHANGED FROM	DATE	CN. NO.	DRAFTS	CHECKER	ENG. APP.
A		DETAILS TS108-1, -2, & -3 NOTES ADD; PICT. REVISED; TMC CHART UPDATED; L. MAX COL. ADD.	3/4/65	13645	22	[Signature]	[Signature]
+	1	REDRAWN - NO REVISION	10/25/54	1	[Signature]	[Signature]	[Signature]

TOLERANCES

SCALE 5/16-15/32

ALL OTHERS
DEC. DIM. ±
FRAC. DIM. ± 1/64
ANGULAR DIM. ±

DRILL, PUNCH, COMMERCIAL STOCK SIZES AND MANUFACTURERS TOLERANCES ARE NOT INCLUDED.

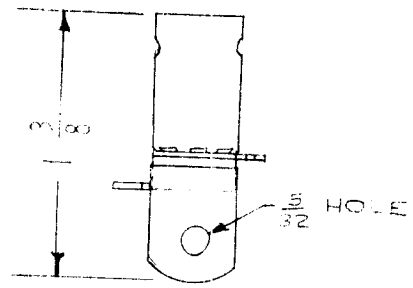
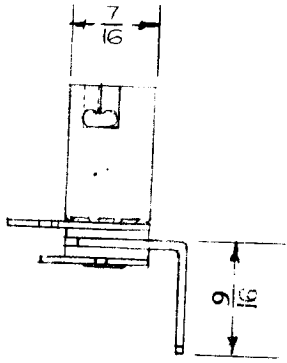
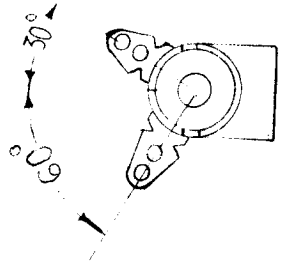
IF IT IS FOUND DESIRABLE TO CHANGE ANY TOLERANCE OR OTHER DETAIL SPECIFIED ON THIS DRAWING NOTIFY THE PURCHASER PROMPTLY.

RELEASED

TS-109

MAXIMUM ALLOWABLE TOLERANCES HAVE BEEN DETERMINED AND DEVIATIONS WILL BE CAUSE FOR REJECTION. REMOVE ALL BURRS AND SHARP EDGES

USED ON			
MODEL	PROJECT NO.	ASS'Y. NO.	DATE
FFRD-5	104	A-228	12-31-52
FFRD-6	104	A-228	12-31-52
FFRD-7	104	A-228	12-31-52
FFRD-8	104	A-228	12-31-52



BRACKET DESCRIPTION
RIGHT ANGLE, DOWNTURNED,
SHORT. HOLE SIZE $\frac{5}{32}$.

SUPERCEDED BY TS-107-2

DIM. FOR REF. ONLY
REF. DIAL LIGHT CO. OF ALERCO (DIALCO) #708

REQ.	ITEM	PART NO.	DESCRIPTION	SYMBOL
		//	THE TECHNICAL MATERIEL CORP. MAMARONECK, NEW YORK	
		STOCK SIZE	SOCKET FOR	
		MATERIAL	MINIATURE BAYONET LAMP	
		WEIGHT PER PC.		
		TYPE & TEMPER		
		HEAT TREAT. SPEC.		
		FINISH & SPEC. NO.		

ISSUE	ITEM	CHANGED FROM	DATE	CN. NO.	DRAFTS	CHECKER	ENG. APP.
TOLERANCES		SCALE		//			
ALL OTHERS	DEC. DIM. \pm FRAC. DIM. \pm ANGULAR DIM. \pm	DRILL, PUNCH, COMMERCIAL STOCK SIZES AND MANUFACTURERS TOLERANCES ARE NOT INCLUDED.					

12-31-52
DRAWN
ELEC. DES. APP. *[Signature]*
MECH. DES. APP. *[Signature]*
CHECKED
FINAL APPROVAL *[Signature]*

TS 109

B

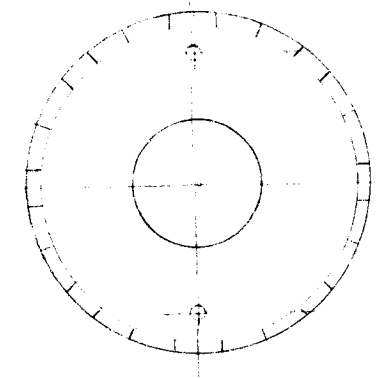
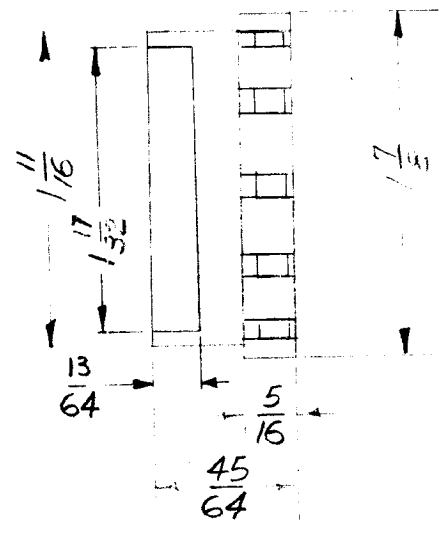
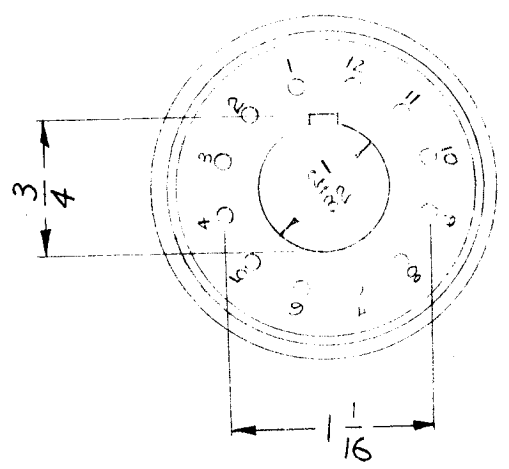
TS-11?

IF IT IS FOUND DESIRABLE TO CHANGE ANY TOLERANCE OR OTHER DETAIL SPECIFIED ON THIS DRAWING NOTIFY THE PURCHASER PROMPTLY.

MAXIMUM ALLOWABLE TOLERANCES HAVE BEEN DETERMINED AND DEVIATIONS WILL BE CAUSE FOR REJECTION. REMOVE ALL BURRS AND SHARP EDGES

USED ON

MODEL	PROJECT NO.	ASS'Y. NO.	DATE
CFA			



NOTE:

SOCKET COMES WITH 12 LOOSE CONTACTS, & 1 COVER, & 2 OR 3 SELF TAPPING SCREWS OPTIONAL

B	1	DWG UPDATED & CLARIFIED	10/9/63	10171	RPD	MLT	DJB
A	2	REF. WAS SYLVANIA #40-31	5-27-63	2388	RPD	JCB	
A	1	O/A DIM. CHANGED					
ISSUE	ITEM	CHANGED FROM	DATE	CN. NO.	DRAFTS	CHECKER	ENG. APP.

REQ.	ITEM	PART NO.	DESCRIPTION	SYMBOL
			THE TECHNICAL MATERIEL CORP. MAMARONECK. NEW YORK	
			SOCKET, DUO DECAL	
			STOCK SIZE	
			LOW LOSS PHENOLIC	
			MATERIAL	WEIGHT PER PC.
			TYPE & TEMPER	
			DRAWN	ELEC. DES. APP. MECH. DES. APP.
			HEAT TREAT. SPEC.	
			FINISH & SPEC. NO.	
			CHECKED	FINAL APPROVAL
			90 10/15/63	RPD
				TS-11?

TOLERANCES		SCALE 3-401-104 (9707-6)
DEC. DIM. ±		3-401-176
FRAC. DIM. ±		DRILL, PUNCH, COMMERCIAL STOCK
ANGULAR DIM. ±		SIZES AND MANUFACTURERS
ALL OTHERS		TOLERANCES ARE NOT INCLUDED.

IF IT IS FOUND DESIRABLE TO CHANGE ANY TOLERANCE OR OTHER DETAIL SPECIFIED ON THIS DRAWING NOTIFY THE PURCHASER PROMPTLY.

MAXIMUM ALLOWABLE TOLERANCES HAVE BEEN DETERMINED AND DEVIATIONS WILL BE CAUSE FOR REJECTION. REMOVE ALL BURRS AND SHARP EDGES

TC-113 \emptyset

USED ON

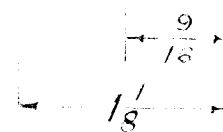
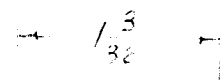
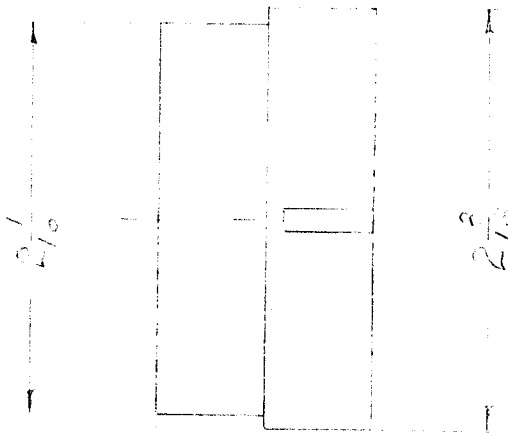
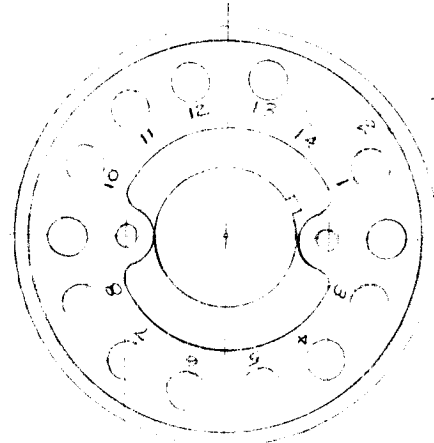
MODEL

PROJECT NO.

ASS'Y. NO.

DATE

DVM



DIMENSIONS FOR REF. ONLY

REF: FRANKLIN DIV. PENNSYLVANIA ELEC. PART NO. 40-35

REQ.	ITEM	PART NO.	DESCRIPTION	SYMBOL
			THE TECHNICAL MATERIEL CORP.	
STOCK SIZE			MAMARONECK, NEW YORK	
			SOCKET, DIELECTRIC	
MATERIAL		WEIGHT PER PC.		
TYPE & TEMPER				
HEAT TREAT. SPEC.				
FINISH & SPEC. NO.				
DRAWN			ELEC. DES. APP.	MECH. DES. APP.
CHECKED			FINAL APPROVAL	
			TC-113 \emptyset	

<input checked="" type="checkbox"/>	ORIGINAL RELEASE	DATE	CN. NO.	DRAFTS	CHECKER	ENG. APP.	
ISSUE	ITEM	CHANGED FROM	DATE	CN. NO.	DRAFTS	CHECKER	ENG. APP.
TOLERANCES			SCALE				
ALL OTHERS	DEC. DIM. \pm FRAC. DIM. \pm ANGULAR DIM. \pm		DRILL, PUNCH, COMMERCIAL STOCK SIZES AND MANUFACTURERS TOLERANCES ARE NOT INCLUDED.				

IF IT IS FOUND DESIRABLE TO CHANGE ANY TOLERANCE OR OTHER DETAIL SPECIFIED ON THIS DRAWING NOTIFY THE PURCHASER PROMPTLY.

STANDARD DRAWING

TS-114

C

MAXIMUM ALLOWABLE TOLERANCES HAVE BEEN DETERMINED AND DEVIATIONS WILL BE CAUSE FOR REJECTION.
REMOVE ALL BURRS AND SHARP EDGES

USED ON

MODEL

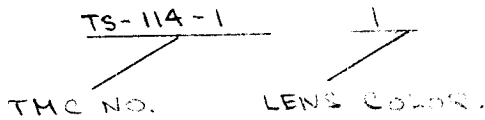
PROJECT NO.

ASS'Y. NO.

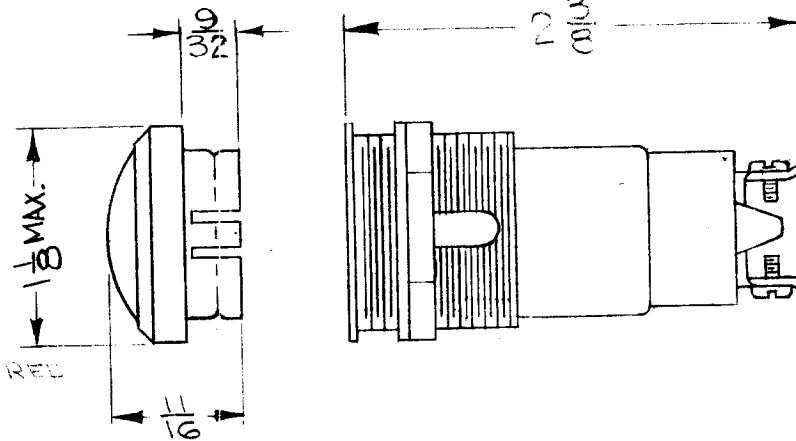
DATE

TMC NO.	CAT. NO	LENS
TS-114-1	313502-11-	BACK OF LENS FROSTED
TS-114-2	313502-12-	FROSTED ALL OVER
TS-114-3	313502-13-	UNFROSTED

TYPE DESIGNATION TO BE IN FOLLOWING FORM



I.E: TS-114-11 = BACK OF LENS FROSTED - LENS-RED



NOTE:
1" CLEARANCE HOLE REQUIRED

LENS COLOR	NO
RED	1
GREEN	2
AMBER	3
BLUE	4
WHITE (TRANSLUCENT)	5
YELLOW	6
CLEAR	7

FINISH NOTE:

MTG. BUSHING - WHITE NICKEL
LENS CAP: - POLISHED CHROME.

DIMENSIONS FOR REFERENCE ONLY.

REF: DIAL LIGHT CO. OF AMERICA

ISSUE	ITEM	CHANGED FROM	DATE	CN. NO.	DRAFTS	CHECKER	ENG. APP.
C	2	FINISH NOTE ADDED	5/20/53	3028			
	1	REVISED TO MFR. SPECS					
B	1	313502 WAS 313202	2/25/54	2	RB	FAIRB	
A	1	TS-114-2 WAS UNFROSTED TS-114-3 WAS FROSTED	3/8/54	1	MIC	FAIRB	

REQ.	ITEM	PART NO.	DESCRIPTION	SYMBOL
			THE TECHNICAL MATERIEL CORP. MAMARONECK. NEW YORK	
		STOCK SIZE	LIGHT INDICATOR	
		MATERIAL	W/ LENS	
		WEIGHT PER PC.		
		TYPE & TEMPER	C.D.D. 1-14-53	
		HEAT TREAT. SPEC.	DRAWN	ELEC. DES. APP. MECH. DES. APP.
		FINISH & SPEC. NO.	1-15-53	CHECKED FINAL APPROVAL
			SEE NOTES	TS-114 C

IF IT IS FOUND DESIRABLE TO CHANGE ANY TOLERANCE OR OTHER DETAIL SPECIFIED ON THIS DRAWING NOTIFY THE PURCHASER PROMPTLY.

TS-120

MAXIMUM ALLOWABLE TOLERANCES HAVE BEEN DETERMINED AND DEVIATIONS WILL BE CAUSE FOR REJECTION. REMOVE ALL BURRS AND SHARP EDGES

REQ
PER
UNIT

USED ON

MODEL

PROJECT NO.

ASS'Y. NO.

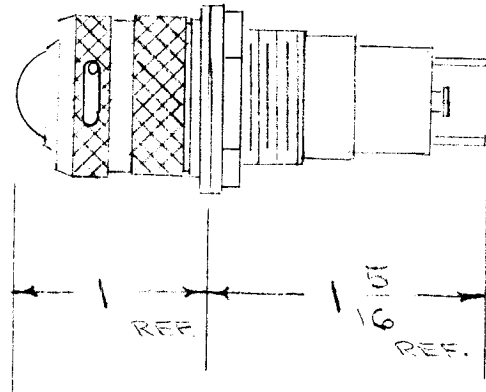
DATE

1

SFO-2

NUT & LOCKWASHER FURNISHED

11
16 MTG. HOLE REQ'D



FOR T-3/4 LAMP

Ref: Dial Light Co. of America 12410-112

REQ.	ITEM	PART NO.	DESCRIPTION	SYMBOL
			THE TECHNICAL MATERIEL CORP.	
STOCK SIZE			MAMARONECK. NEW YORK	
			LIGHT, INDICATOR, WITH LENS	
MATERIAL		WEIGHT PER PC.		
TYPE & TEMPER			C.P.D.	
HEAT TREAT. SPEC.			DRAWN	
FINISH & SPEC. NO.			ELEC. DES. APP.	
			MECH. DES. APP.	
			CHECKED	
			FINAL APPROVAL	
			TS-120	

ISSUE	ITEM	CHANGED FROM	DATE	CN. NO.	DRAFTS	CHECKER	ENG. APP.
TOLERANCES		SCALE					
ALL OTHERS	DEC. DIM. ± FRAC. DIM. ± ANGULAR DIM. ±		DRILL, PUNCH, COMMERCIAL STOCK SIZES AND MANUFACTURERS TOLERANCES ARE NOT INCLUDED.				

IF IT IS FOUND DESIRABLE TO CHANGE ANY TOLERANCE OR OTHER DETAIL SPECIFIED ON THIS DRAWING NOTIFY THE PURCHASER PROMPTLY.

TS-122

MAXIMUM ALLOWABLE TOLERANCES HAVE BEEN DETERMINED AND DEVIATIONS WILL BE CAUSE FOR REJECTION. REMOVE ALL BURRS AND SHARP EDGES

REQ. PER UNIT

USED ON

MODEL

PROJECT NO.

ASS'Y. NO.

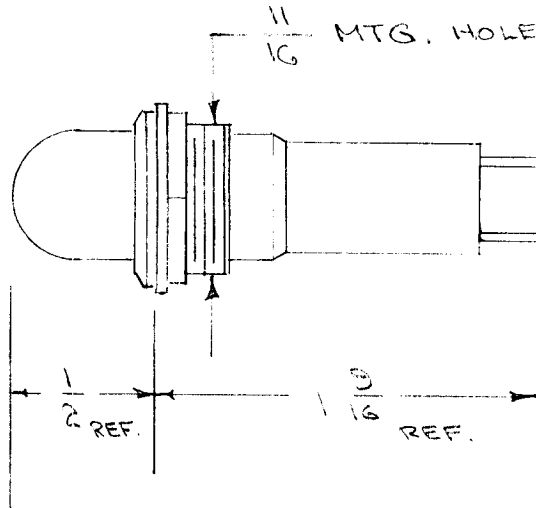
DATE

1

RACP/S

11/9/53

NUT & LOCKWASHER FURNISHED



REF: DIAL LIGHT CO. OF AMER. 52408-995

REQ.	ITEM	PART NO.	DESCRIPTION	SYMBOL
			THE TECHNICAL MATERIEL CORP.	
STOCK SIZE			MAMARONECK. NEW YORK	
			LIGHT, INDICATOR w/LENS	
MATERIAL		WEIGHT PER PC.		
TYPE & TEMPER			CDD. 11/9/53	<i>[Signature]</i>
			DRAWN	ELEC. DES. APP. MECH. DES. APP.
			<i>[Signature]</i>	<i>[Signature]</i>
HEAT TREAT. SPEC.			CHECKED	FINAL APPROVAL
				TS-122
FINISH & SPEC. NO.				

ISSUE	ITEM	CHANGED FROM	DATE	CN. NO.	DRAFTS	CHECKER	ENG. APP.
-------	------	--------------	------	---------	--------	---------	-----------

TOLERANCES

SCALE

ALL OTHERS
DEC. DIM. ±
FRAC. DIM. ±
ANGULAR DIM. ±

DRILL, PUNCH, COMMERCIAL STOCK SIZES AND MANUFACTURERS TOLERANCES ARE NOT INCLUDED.

IF IT IS FOUND DESIRABLE TO CHANGE ANY TOLERANCE OR OTHER DETAIL SPECIFIED ON THIS DRAWING NOTIFY THE PURCHASER PROMPTLY.

STANDARD DRAWING

TS-124 A

MAXIMUM ALLOWABLE TOLERANCES HAVE BEEN DETERMINED AND DEVIATIONS WILL BE CAUSE FOR REJECTION. REMOVE ALL BURRS AND SHARP EDGES

REQ. PER UNIT

USED ON

MODEL

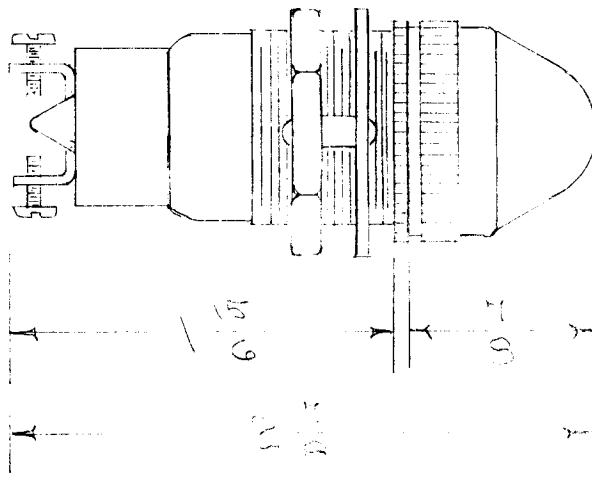
PROJECT NO.

ASS'Y. NO.

DATE

LOCKWASHER & MTG. NOT FURNISHED
MTG. HOLE SIZE - 1 INCH DIA.

TS-124 - 1
TMC NO. COLOR



THE FINAL FIG 1 IN CAT. NO. INDICATES THE LENS. FOR OTHER COLOR CHANGES FIGURE TO

GREEN - 2
AMBER - 3
BLUE - 4
RED - 5
YELLOW - 6
CLEAR - 7

NOTE:

FOR SPARE PART REPLACEMENT OF LENS ONLY, SEE TMC DRAWING LI-104.

DIM. FOR REV. ONLY

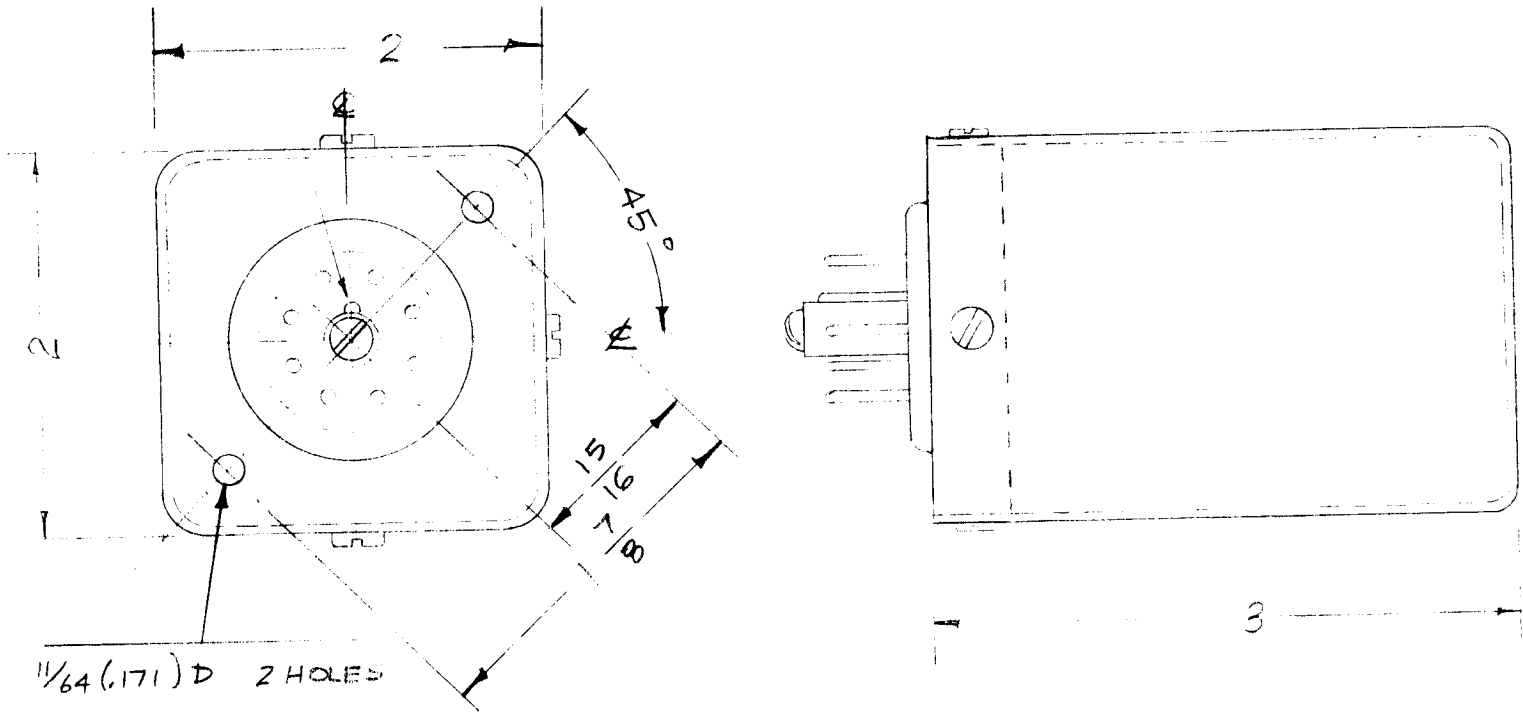
REFRIGERAL LIGHT CO. OF AMER. CAT. NO. 803207-531

REQ.	ITEM	PART NO.	DESCRIPTION	SYMBOL
			THE TECHNICAL MATERIEL CORP.	
		STOCK SIZE	MAMARONECK. NEW YORK	
			SOCKET, BAY-NET	
		MATERIAL	w/LENS	
		WEIGHT PER PC.	CDU 8/25/55	
		TYPE & TEMPER	am/10/24/55	
			DRAWN	ELEC. DES. APP.
			MECH. DES. APP.	
		HEAT TREAT. SPEC.	AJJ	
			CHECKED	FINAL APPROVAL
		FINISH & SPEC. NO.	TS-124 A	

A	1	Spare Parts Note Added	4-12-62	6611	EE		
ISSUE	ITEM	CHANGED FROM	DATE	CN. NO.	DRAFTS	CHECKER	ENG. APP.
TOLERANCES			SCALE				
ALL OTHERS	DEC. DIM. ± FRAC. DIM. ± ANGULAR DIM. ±		DRILL, PUNCH, COMMERCIAL STOCK SIZES AND MANUFACTURERS TOLERANCES ARE NOT INCLUDED.				

REQ. PER UNIT	USED ON			TS-126	B
	MODEL	ASS'Y. NO.	DATE		
1	RL-110		9-16-55		

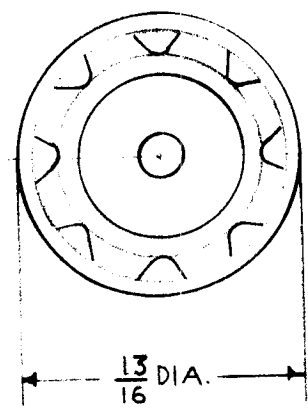
NOTE POSITION OF KEY-WAY ON ϕ OF SCREWS



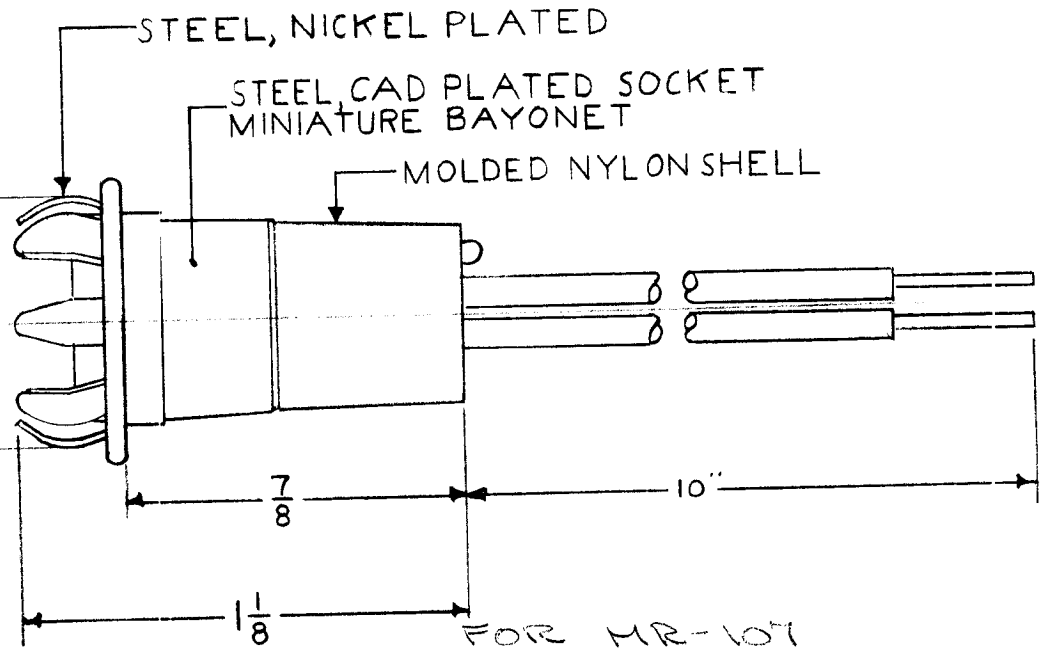
REF: VECTOR ELECTRIC CO. CAT. NO. C12 (MODIFIED)
TMC No. PO-106-6NT (MODIFIED)

ISSUE	ITEM	CHANGED FROM	DATE	CH. NO.	DRAFTS	CHECKER	ENG. APP.	REQ. ITEM	PART NO.	DESCRIPTION	SYMBOL					
										THE TECHNICAL MATERIEL CORP. MAMARONECK, NEW YORK PLUS IN SOCKET						
B	1	ON VENDOR REF, TMC NO WAS PO-106	5-20-63	9108												
A	1	1/64 D. HOLES ADDED	12/3/54	1												
TOLERANCES			SCALE:					MATERIAL		1/16						
DEC. DIM. \pm			MAXIMUM ALLOWABLE TOLERANCES HAVE BEEN DETERMINED AND ANY DEVIATIONS WILL BE CAUSE FOR REJECTION. REMOVE ALL BURRS AND SHARP EDGES					TYPE & TEMPER		HEAT TREAT. SPEC.	DRAWN	CHECKED	FINAL APPROVAL			
FRAC. DIM. \pm								FINISH & SPEC. NO.		ELEC. DES. APP.	MECH. DES. APP.					
ANGULAR DIM. \pm																
										TS-126	B					

REQ. PER UNIT	USED ON			TS-127	A
	MODEL	ASSY. NO.	DATE		



SNAPS IN .625 HOLE
IN .035 THICK STOCK



REF: AERO-LITE # PT-179 10" LEADS

REQ.	ITEM	PART NO.	DESCRIPTION				SYMBOL
			THE TECHNICAL MATERIEL CORP. MAMARONECK. NEW YORK				
			STOCK SIZE				
			MATERIAL				
A	1	DWG. ADDED	9-8-61	5532	A.I.	ab	16
ISSUE	ITEM	CHANGED FROM	DATE	CH. NO.	DRAFTS	CHECKER	ENG. APP.
TOLERANCES			SCALE:				
DEC. DIM. ±			MAXIMUM ALLOWABLE TOLERANCES HAVE BEEN DETERMINED AND ANY DEVIATIONS WILL BE CAUSE FOR REJECTION. REMOVE ALL BURRS AND SHARP EDGES				
FRAC. DIM. ±							
ANGULAR DIM. ±							
TYPE & TEMPER		HEAT TREAT. SPEC.	DRAWN	CHECKED	FINAL APPROVAL		
FINISH & SPEC. NO.		ELEC. DES. APP.	MECH. DES. APP.		TS-127 A		

INSULATOR MATERIAL	
SYMBOL	MATERIAL
G	Bakelite, General Purpose
M	Bakelite, Mica Filled
C	Ceramic

CHART 1

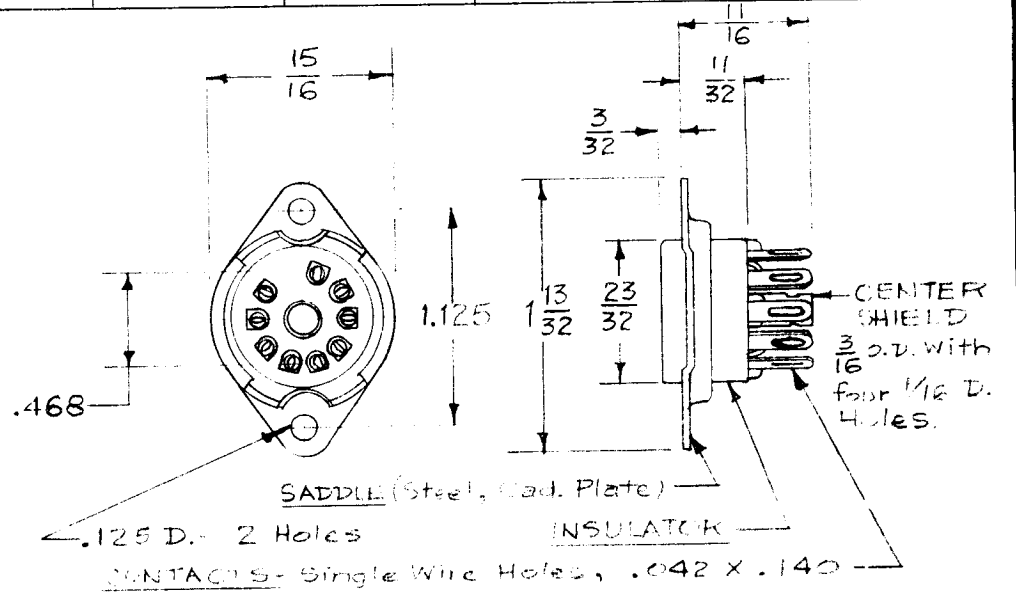
CONTACT MATERIAL	
SYMBOL	MATERIAL & FINISH
B	Brass, Cadmium Plate
P	Phosphor Bronze, Cad. Plate
S	Beryllium Copper, Silver Plate
T	Brass, Hot Tin Dipped

CHART 2

CENTER SHIELD	
SYMBOL	DESCRIPTION
W	With Center Shield
N	W/O Center Shield

CHART 3

REQ. PER UNIT	USED ON		
	MODEL	ASSY. NO.	DATE
			TS-131 A



TYPE DESIGNATION

TS-131 - G - B - W

TMC PART NO. (9 Pin Socket) Commercial
 INSULATOR MATERIAL (See Chart 1)
 CONTACT MATERIAL (See Chart 2)
 CENTER SHIELD (See Chart 3)

ISSUE	ITEM	CHANGED FROM	DATE	CH. NO.	DRAFTS	CHECKER	ENG. APP.
A		CLERICAL CHANGE	8-24-64		htb	@	

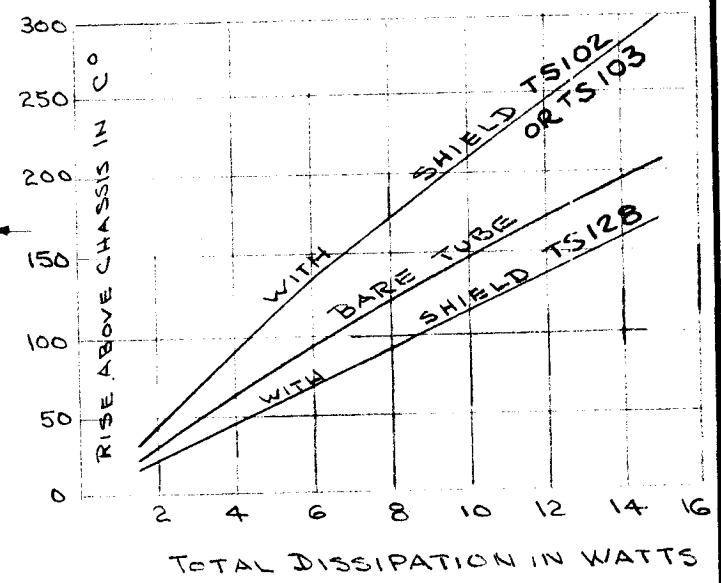
REQ. ITEM	PART NO.	DESCRIPTION	SYMBOL
		THE TECHNICAL MATERIEL CORP. MAMARONECK, NEW YORK	
		STOCK SIZE	
		SOCKET, ELECTRON TUBE	
		9 PIN MINI, BOTTOM MTS.	
		MATERIAL	
		164-28477	
		PLK	
		TYPE & TEMPER	
		HEAT TREAT. SPEC.	
		DRAWN	
		CHECKED	
		FINISH & SPEC. NO.	
		ELEC. DES. APP.	
		MECH. DES. APP.	
			TS-131 A

TOLERANCES
 DEC. DIM. ± .005
 FRAC. DIM. ±
 ANGULAR DIM. ±

SCALE:
 MAXIMUM ALLOWABLE TOLERANCES HAVE BEEN DETERMINED AND ANY DEVIATIONS WILL BE CAUSE FOR REJECTION.
 REMOVE ALL BURRS AND SHARP EDGES

TMC PART NO.	A HEIGHT OF SHIELD	B MAX. SEATED HEIGHT	USE WITH TUBE TYPE	SHIELD TYPE	MFG. PART NO.	USED ON			TS 128	C
						REQ. PER UNIT	MODEL	ASS'Y. NO.		
TS 128-1	1 1/2 ⁺⁰ / _{-1/16}	1 5/8"	6ALS	C	TR5-50155					
-2	2 ⁺⁰ / _{-1/16}	2 1/8"	6AW6	C	TR5-50208					
-3	2 1/2 ⁺⁰ / _{-1/16}	2 5/8"	6AQ5	C	TR5-50211					
-4	1 1/2 ⁺⁰ / _{-1/16}	1 5/8"	5G70	D	TR5-50211					
-5	2 ⁺⁰ / _{-1/16}	2 1/8"	12A07	D	TR5-50211					
-6	2 1/2 ⁺⁰ / _{-1/16}	2 5/8"	12BH7	D	TR5-50211					
-7	2 3/4 ⁺⁰ / _{-1/16}	2 7/8"	6094	D	TR5-50211					
-8	2 3/4 ⁺⁰ / _{-1/16}	2 7/8"		D	TR5-50211					

STANDARD DRAWING



SPECS.

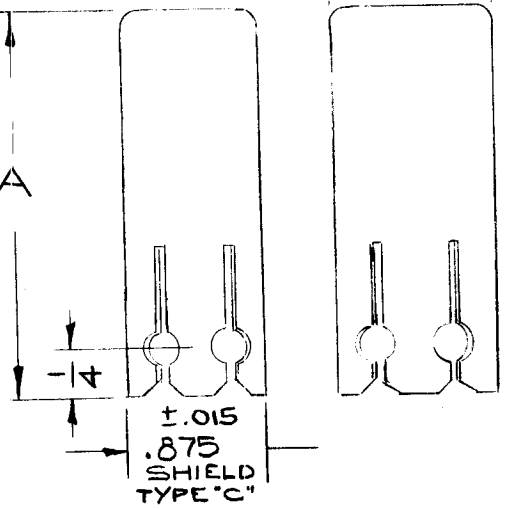
LINER MATERIAL - BERYLLIUM COPPER
FINISH - BLACK CADMIUM PLATE OR HENDERLUBE

SHELL MATERIAL - HEAT CONDUCTING - NON MAGNETIC
FINISH - ANODIZE DULL BLACK A OR HENDERLUBE.
 BOTTOM 5/8 INCH ON INSIDE SHALL BE FREE OF FINISH.

INSTALLATION FORCE - LESS THAN 20 POUNDS AT 25°C ± 5°C

HEAT DISSIPATION CHARACTERISTIC - "X" OR BETTER

MAX. OPERATING TEMP. - 200°C



NOTE:
 SHIELD SHALL BE IN ACCORDANCE WITH MIL SPEC MIL-S-9372C & MIL STANDARD MS24233

REQ.	ITEM	PART NO.	DESCRIPTION	SYMBOL					
C	2	±.015 ADD TO PICT. (2 PL) SPECS. ADD. NOTE REV.	10.13.64 12603	WBS					
B	3	INSERT LINER NOTE ADDED MIL SPEC. NOTE ADDED (W/ ALL MFG PART NO. SUFFIX "B" ADDED)	7-15-6 5266	G.D.L. M.D.F. L.G.					
A	2	Tolerances Added	7-19-57 1	SK. J.H. De. J.H.					
A	1	TS-128-7 & 8 Added							
ISSUE ITEM		CHANGED FROM	DATE	CH. NO.	DRAFTS	CHECKER	ENG. APP.		
TOLERANCES		SCALE: S401-312							
DEC. DIM. ±		MAXIMUM ALLOWABLE TOLERANCES HAVE BEEN DETERMINED AND ANY DEVIATIONS WILL BE CAUSE FOR REJECTION. REMOVE ALL BURRS AND SHARP EDGES							
FRAC. DIM. ±									
ANGULAR DIM. ±									
TYPE & TEMPER		HEAT TREAT. SPEC.	DRAWN	CHECKED	FINAL APPROVAL				
FINISH & SPEC. NO.		ELEC. DES. APP.	MECH. DES. APP.	TS 128 C					

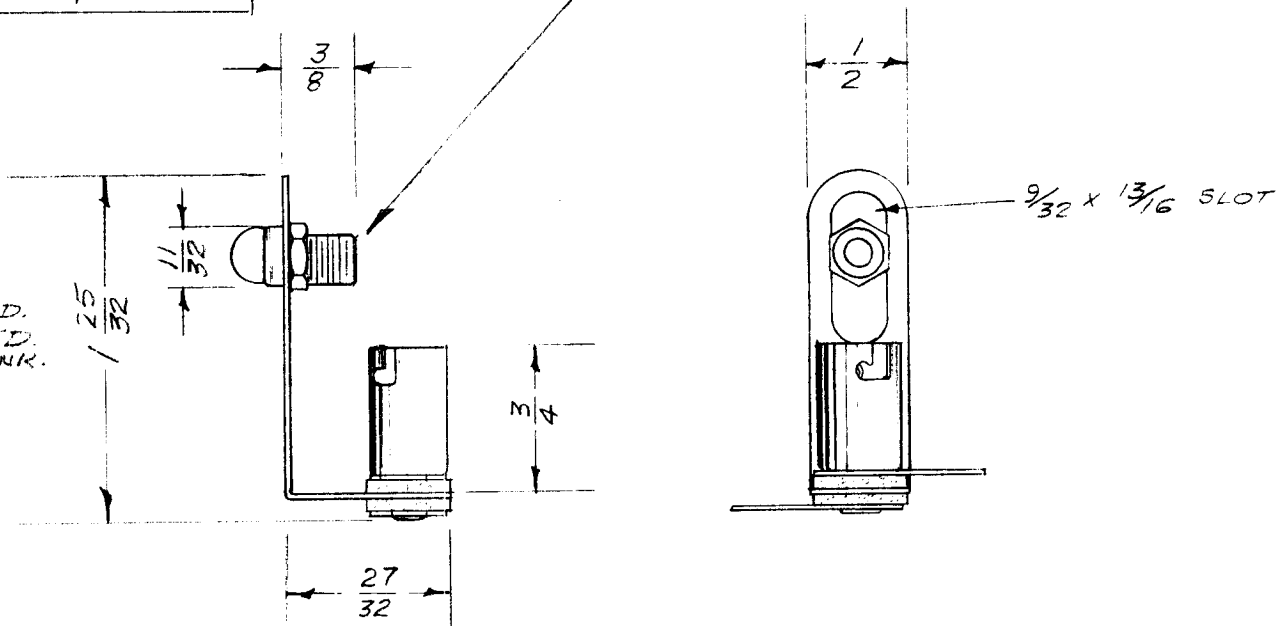
TMC PART NO.	LENS COLOR	DIALCO CAT. NO.
TS-129-1	RED	755-UG21 w/3/8 SHANK
-2	GREEN	755 UG22 w/3/8 SHANK
-3	AMBER	755 UG23 w/3/8 SHANK
-4	BLUE	755 UG24 w/3/8 SHANK
-5	WHITE TRANSLUC.	755 UG25 w/3/8 SHANK
-6	YELLOW	755 UG26 w/3/8 SHANK
-7	CLEAR COLORLESS	755 UG27 w/3/8 SHANK

REQ. PER UNIT	USED ON		
	MODEL	ASS'Y. NO.	DATE
			TS-129 A

STANDARD DRAWING

9/32 - 32 Thread x 3/8 SHANK

- NOTES:
1. ADJUSTABLE FOCAL LENGTH
 2. PANEL HARDWARE, NICKEL PLATED. OTHER PARTS, CADMIUM PLATED.
 3. CONVEX, FROSTED LENS W/3/8 SHANK.
 4. NUT SUPPLIED BY MFG.
 5. BAYONET SOCKET



REF: DIALCO.

ISSUE	ITEM	CHANGED FROM	DATE	CH. NO.	DRAFTS	CHECKER	ENG. APP.	REQ. ITEM	PART NO.	DESCRIPTION	SYMBOL	
										THE TECHNICAL MATERIEL CORP. MAMARONECK, NEW YORK LIGHT, INDICATOR		
A	1	DIALCO CAT. NOS. ADDED	3/27/58	1								
TOLERANCES								SCALE:				
DEC. DIM. ± FRAC. DIM. ± ANGULAR DIM. ±								MAXIMUM ALLOWABLE TOLERANCES HAVE BEEN DETERMINED AND ANY DEVIATIONS WILL BE CAUSE FOR REJECTION. REMOVE ALL BURRS AND SHARP EDGES				
								TYPE & TEMPER	HEAT TREAT. SPEC.	DRAWN	CHECKED	FINAL APPROVAL
										PLK		TS-129 A
								FINISH & SPEC. NO.	ELEC. DES. APP.	MECH. DES. APP.		

— INSULATOR MATERIAL —	
SYMBOL	MATERIAL
G	Bakelite, General Purpose
M	Bakelite, Mica Filled
C	Ceramic

—CHART 1

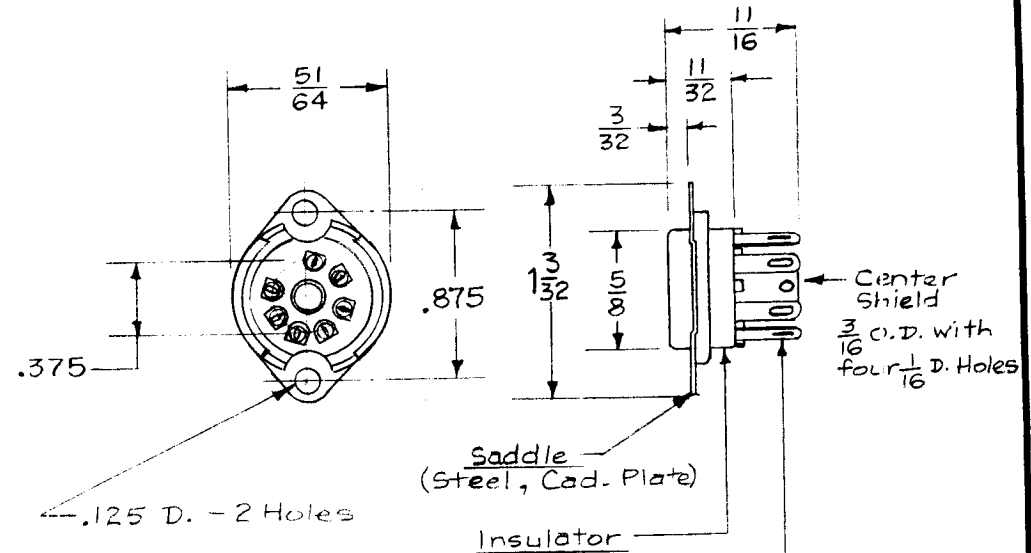
— CONTACT MATERIAL —	
SYMBOL	MATERIAL & FINISH
B	Brass, Cadmium Plate
P	Phosphur Bronze, Cad. Plate
S	Bery'l'm Copper, Silver Plate
T	Brass, Hot Tin Dipped

—CHART 2

— CENTER SHIELD —	
SYMBOL	DESCRIPTION
W	With Center Shield
N	W/O Center Shield

—CHART 3

REQ. PER UNIT	USED ON		
	MODEL	ASS'Y. NO.	DATE
			TS-130



CONTACTS - Single Wire Holes, .042 X .140

Type Designation

TS-130 - G - B - W

TMC PART NO. (7 Pin Socket, Commercial)
 INSULATOR MAT. (See Chart 1)
 CONTACT MATERIAL (See Chart 2)
 CENTER SHIELD (See Chart 3)

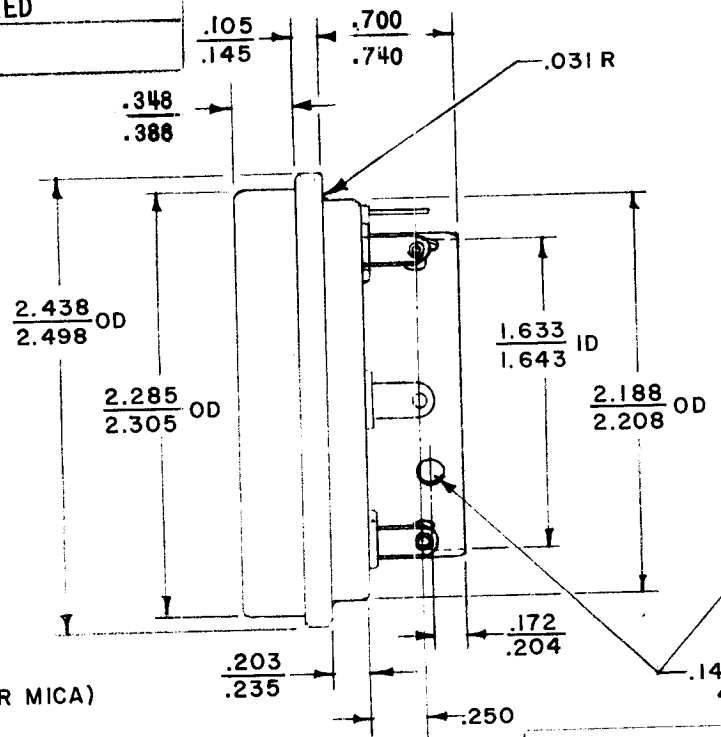
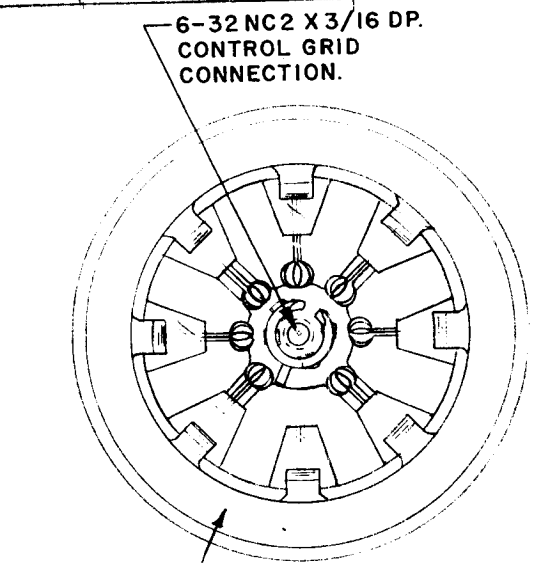
Ref - ELCO Corp.; EBY Inc

REQ.	ITEM	PART NO.	DESCRIPTION				SYMBOL
			THE TECHNICAL MATERIEL CORP. MAMARONECK, NEW YORK				
			SOCKET, ELECTRON TUBE, 7 PIN MIN., BOTTOM MTG.				
ISSUE	ITEM	CHANGED FROM	DATE	CH. NO.	DRAFTS	CHECKER	ENG. APP.
TOLERANCES			SCALE:				
DEC. DIM. ± .005			MAXIMUM ALLOWABLE TOLERANCES HAVE BEEN DETERMINED AND ANY DEVIATIONS WILL BE CAUSE FOR REJECTION.				
FRAC. DIM. ±			REMOVE ALL BURRS AND SHARP EDGES				
ANGULAR DIM. ±							
TYPE & TEMPER		HEAT TREAT. SPEC.		DRAWN		CHECKED	
FINISH & SPEC. NO.				ELEC. DES. APP.		MECH. DES. APP.	
				164-25-57		A. J. J.	
				P.L.K.		TS-130	
						FINAL APPROVAL	

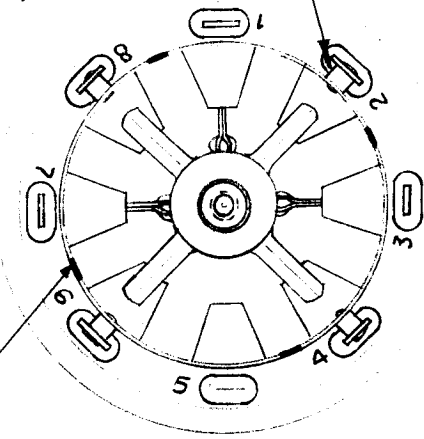
TMC P/N	MFR "A"	MFR "B"	CATHODE OR GROUND
TS132	SK630	124-116-1	RIVET CONN (AS SHOWN)
TS132 -2	SK620A		NOT REQUIRED

REQ. PER UNIT	USED ON		
	MODEL	ASSY. NO.	DATE
2	RFA-1		7-15-58

TS-132 B



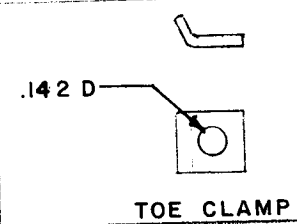
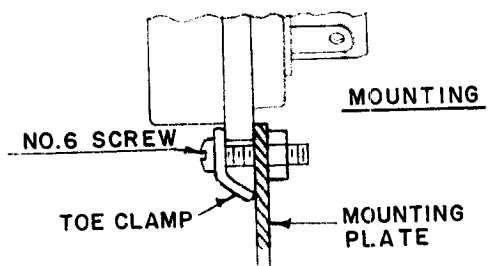
CATHODE GROUND RIVET CONNECTION NO'S. 2, 4, 6, & 8. WHEN REQUIRED (SEE CHART)



SCREEN GRID BYPASS CAPACITOR. (INTERNAL) VALUE - 1100 MMFD. (SILVER MICA)

PIN CONNECTIONS

- NO. 1 SCREEN GRID
- NO. 2 CATHODE
- NO. 3 HEATER
- NO. 4 CATHODE
- NO. 5 NO CONN.
- NO. 6 CATHODE
- NO. 7 HEATER
- NO. 8 CATHODE



NOTE: 3 TOE CLAMPS TO BE SUPPLIED BY MFG. CLAMPS TO BE MOUNTED ON A 2.610 D. CIRCLE, 120° APART.

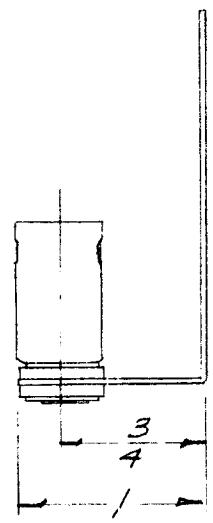
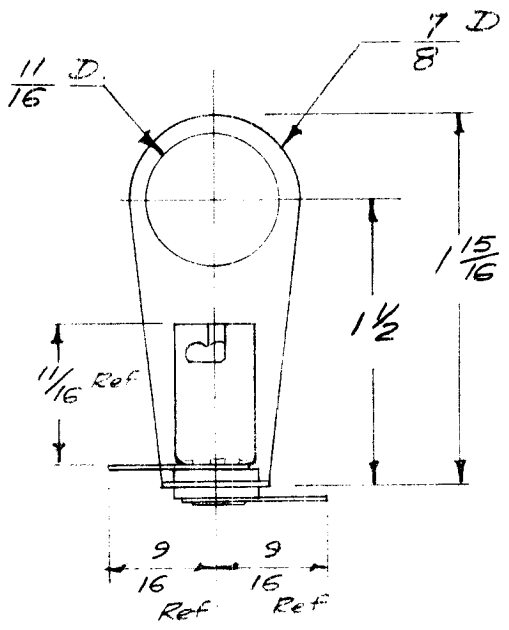
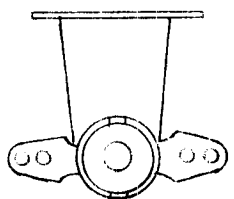
MFGR: A. S401-23
B. S401-47

B	CHART ADDED DIM. CHGD	5/17/68	CV	FB			
A	JOHNSON No. 124-115	9/5/53	444	Mc	sig	A.J.S.	
ISSUE	ITEM	CHANGED FROM	DATE	CH. NO.	DRAFTS	CHECKER	ENG. APP.
TOLERANCES		SCALE:					
DEC. DIM. ±		MAXIMUM ALLOWABLE TOLERANCES HAVE BEEN DETERMINED AND ANY DEVIATIONS WILL BE CAUSE FOR REJECTION.					
FRAC. DIM. ±		REMOVE ALL BURRS AND SHARP EDGES					
ANGULAR DIM. ±							

REQ. ITEM	PART NO.	DESCRIPTION	SYMBOL
		THE TECHNICAL MATERIEL CORP. MAMARONECK. NEW YORK	
STOCK SIZE		SOCKET, ELECTRON TUBE, AIR SYSTEM	
MATERIAL			
TYPE & TEMPER		DRAWN	
HEAT TREAT. SPEC.		CHECKED	
FINISH & SPEC. NO.		FINAL APPROVAL	
		ELEC. DES. APP. MECH. DES. APP.	

16/15/58
A.J.S.
TS-132 B

REQ. PER UNIT	USED ON			75-133
	MODEL	ASS'Y. NO.	DATE	
2	MSE-4			



For T-3/4 Bayonet Base

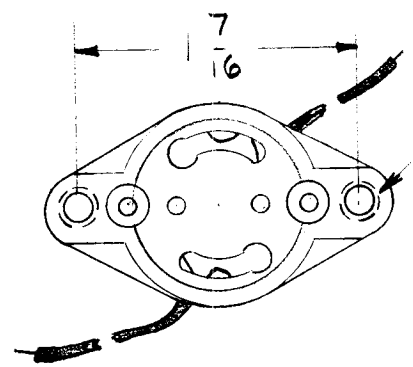
For LI-101 Lens (TMC NO.)
 Ref. DIALCO # 7-625-180

ISSUE	ITEM	CHANGED FROM	DATE	CH. NO.	DRAFTS	CHECKER	ENG. APP.
		TOLERANCES					
		DEC. DIM. ±					
		FRAC. DIM. ±					
		ANGULAR DIM. ±					

REQ. ITEM	PART NO.	DESCRIPTION	SYMBOL
		THE TECHNICAL MATERIEL CORP. MAMARONECK, NEW YORK	
		SOCKET, LAMP	
		MATERIAL	
		16 7/19/58	
		DRAWN	
		CHECKED	
		FINAL APPROVAL	
			TS-133
		FINISH & SPEC. NO.	
		ELEC. DES. APP.	
		MECH. DES. APP.	

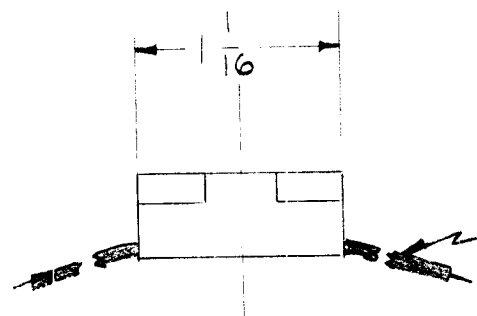
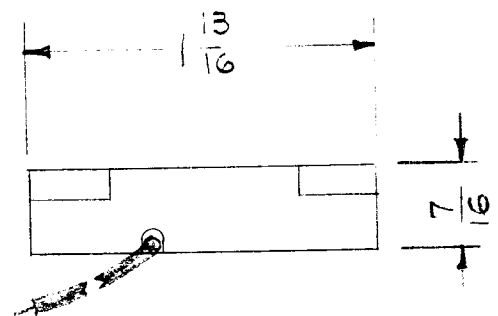
REQ. PER UNIT	USED ON		
	MODEL	ASS'Y. NO.	DATE
2	GPT-10K	AX-173	
2	GPT-40K	AM-109	4-4-60
2	GPT-40K	AT-101	4-4-60

TS-140 A



- 6-32 TAP HOLES
2 REQ.

ELECTRICAL SPECIFICATIONS
660 W
250 V



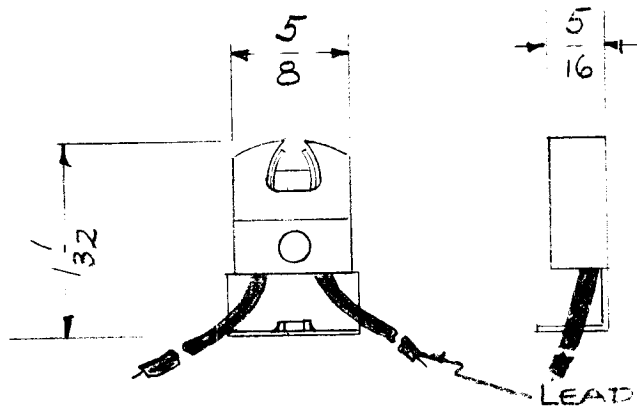
LEADS - APPROX. $8 \frac{3}{4}$ " LG.

FOR STARTER - TMC NO. PO-170

REF: KULKA ELEC. 596

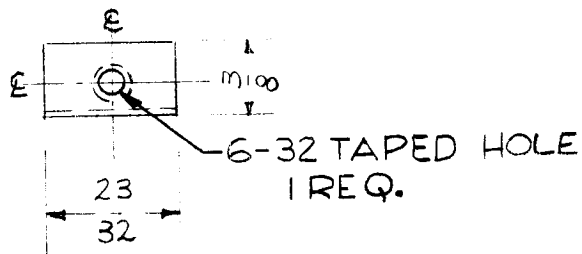
								REQ.	ITEM	PART NO.	DESCRIPTION			SYMBOL	
											THE TECHNICAL MATERIEL CORP. MAMARONECK, NEW YORK				
											SOCKET, STARTER, FLUORESCENT				
A	1	6-32 TAPED HOLES WERE .140 DIA.	1-2-62	6133	L.H.	SM	SM				PI	IQ	APB		
ISSUE	ITEM	CHANGED FROM	DATE	CH. NO.	DRAFTS	CHECKER	ENG. APP.				DRAWN	CHECKED	FINAL APPROVAL		
TOLERANCES			SCALE:					TYPE & TEMPER		HEAT TREAT. SPEC.					
DEC. DIM. ± FRAC. DIM. ± ANGULAR DIM. ±			MAXIMUM ALLOWABLE TOLERANCES HAVE BEEN DETERMINED AND ANY DEVIATIONS WILL BE CAUSE FOR REJECTION. REMOVE ALL BURRS AND SHARP EDGES								FINISH & SPEC. NO.		ELEC. DES. APP	MECH. DES. APP	TS-140 A

REQ. PER. UNIT	USED ON			TS-141	A
	MODEL	ASS'Y. NO.	DATE		
4	GPT-1DK	AX-173			
4	GPT-40K	AM-109	4-4-60		
4	GPT-40K	AT-101	4-4-60		



ELECTRICAL SPECS.
 VOLTAGE - 250V
 WATTAGE - 75W
 FOR 1/2 D. MIN. LAMP

LEADS - APPROX. 6" LONG.



NOTE -
 NO SLOT IN METAL BRACKET
 (FOR LEAD ACCESS)

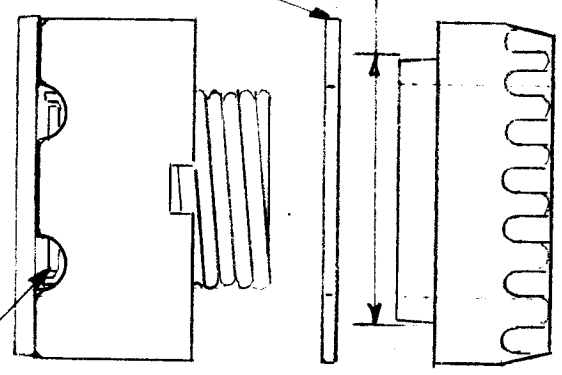
FOR LAMP, TMC NO. BI-107

REF: KULKA 570 BR-A

								REQ.	ITEM	PART NO.	DESCRIPTION	SYMBOL	
											THE TECHNICAL MATERIEL CORP.		
								STOCK SIZE			MAMARONECK, NEW YORK		
											SOCKET, LAMP, FLUORESCENT		
								MATERIAL					
A	1	6-32 Taped Hole Added	1-2-62	6133	L.B.	PK	JAM			PI	TS	ARB	
ISSUE	ITEM	CHANGED FROM	DATE	CH. NO.	DRAFTS	CHECKER	ENG. APP.						
TOLERANCES			SCALE:					TYPE & TEMPER	HEAT TREAT. SPEC.	DRAWN	CHECKED	FINAL APPROVAL	
DEC. DIM. ±			MAXIMUM ALLOWABLE TOLERANCES HAVE BEEN DETERMINED AND ANY DEVIATIONS WILL BE CAUSE FOR REJECTION.							EG.	AP	TS-141	
FRAC. DIM. ±			REMOVE ALL BURRS AND SHARP EDGES									A	
ANGULAR DIM. ±													
								FINISH & SPEC. NO.		ELEC. DES. APP	MECH. DES. APP		

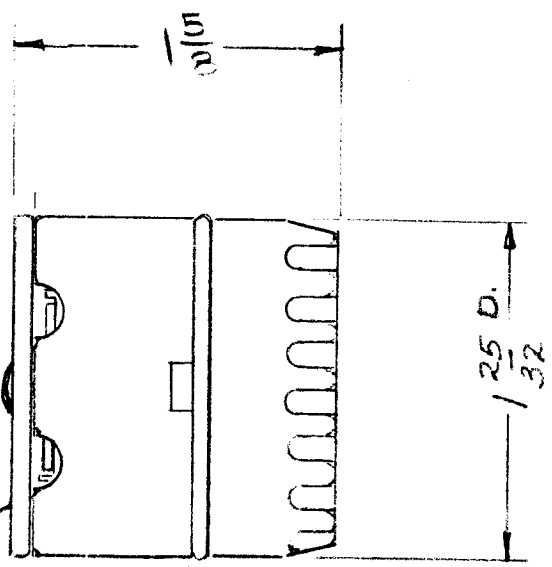
REQ. PER UNIT 1	USED ON		
	MODEL GPT-10K	ASSY. NO. AX-173	DATE TS-143

INSULATED WASHER
1/8" MTG HOLE REQ'D



(2) SCREW TYPE TERMINALS #6-32

SHALLOW TYPE UNGLAZED RING
660 WATTS, 250 VOLTS.
COVERED TERMINALS



PROTECTIVE COVER

NOTICE TO PERSONS RECEIVING THIS DRAWING

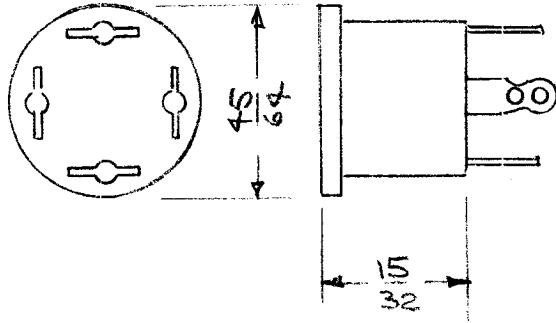
THE TECHNICAL MATERIEL CORPORATION claims proprietary right in the material disclosed hereon. This drawing is issued in confidence for engineering information only and may not be reproduced or used to manufacture anything shown herein without PERMISSION from THE TECHNICAL MATERIEL CORPORATION to the user. This drawing is prepared for your assistance and is subject to recall without notice.

Property of
THE TECHNICAL MATERIEL CORPORATION
MAMARONECK, N.Y.

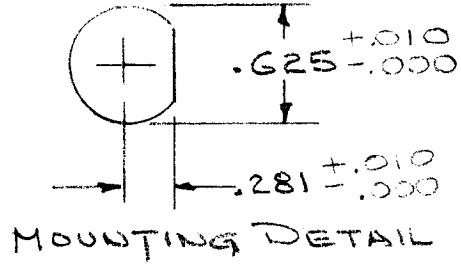
REF. HUBBELL # 4113

ISSUE	ITEM	CHANGED FROM	DATE	CH. NO.	DRAFTS	CHECKER	ENG. APP.	REQ.	ITEM	PART NO.	DESCRIPTION	SYMBOL	
											THE TECHNICAL MATERIEL CORP. MAMARONECK, NEW YORK SOCKET, LAMP, (SCREW BASE)		
TOLERANCES			SCALE:										
DEC. DIM. ±			MAXIMUM ALLOWABLE TOLERANCES HAVE BEEN DETERMINED AND ANY DEVIATIONS WILL BE CAUSE FOR REJECTION. REMOVE ALL BURRS AND SHARP EDGES										
FRAC. DIM. ±													
ANGULAR DIM. ±													
								FINISH & SPEC. NO.		ELEC. DES. APP		MECH. DES. APP	
												TS-143	

REQ. PER UNIT	USED ON			TS-144	A
	MODEL	ASS'Y. NO.	DATE		
1	TU-2	ATS-2	8-21-59		



NOTE:
MFGR. TO SUPPLY RETAINER
SPRING.



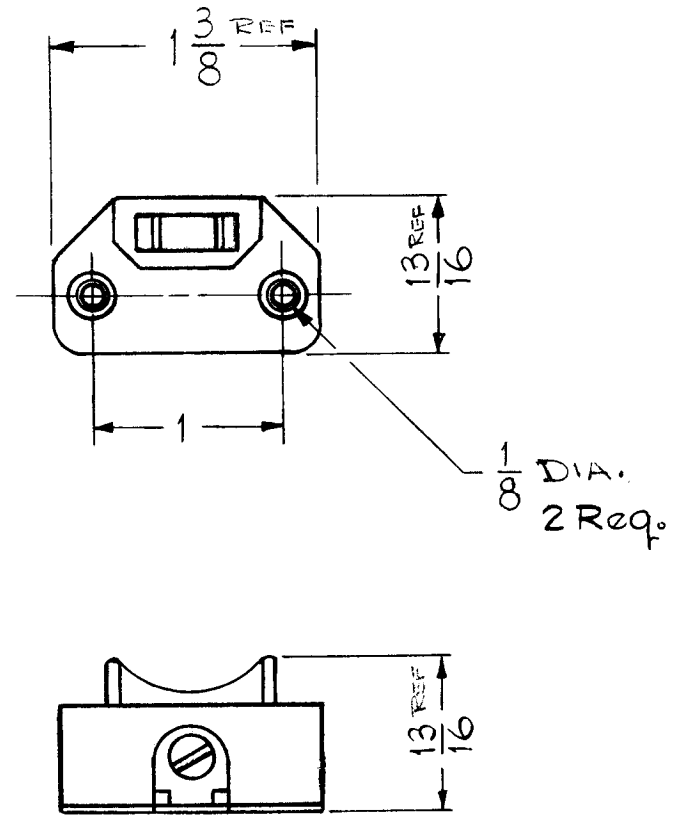
Ref - For TMC Part # RR-123

REQ.	ITEM	PART NO.	DESCRIPTION			SYMBOL							
			THE TECHNICAL MATERIEL CORP. MAMARONECK, NEW YORK										
			STOCK SIZE										
A	1		SOCKET, MINIATURE RETAINER RING TYPE										
			MATERIAL										
ISSUE	ITEM	CHANGED FROM	DATE	CH. NO.	DRAFTS	CHECKER	ENG. APP.						
		TOL. ADDED TO DIMS.	7/16/59	0615	20	(Signature)	WPP						
TOLERANCES			SCALE: 3-401-71 (78-543)										
DEC. DIM. ± FRAC. DIM. ± ANGULAR DIM. ±			MAXIMUM ALLOWABLE TOLERANCES HAVE BEEN DETERMINED AND ANY DEVIATIONS WILL BE CAUSE FOR REJECTION; REMOVE ALL BURRS AND SHARP EDGES										
			TYPE & TEMPER		HEAT TREAT. SPEC.		DRAWN		CHECKED		FINAL APPROVAL		
							(Signature)		P.A.		(Signature)		
			FINISH & SPEC. NO.		ELEC. DES. APP		MECH. DES. APP		TS-144		A		

REQ. PER. UNIT	USED ON			TS-145
	MODEL	ASS'Y. NO.	DATE	
2	CON		12-10-59	

SPECIFICATIONS ~

660 WATTS
 250VOLTS AC
 COLOR ~ BLACK



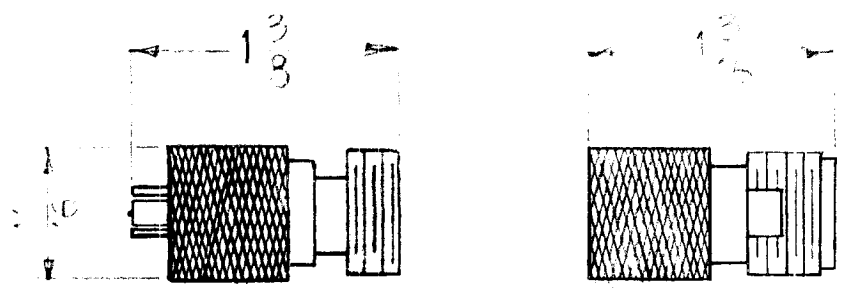
FOR USE w/ TMC PT. NOS HB-114 & BI-108

							REQ. ITEM	PART NO.	DESCRIPTION	SYMBOL			
									THE TECHNICAL MATERIEL CORP.				
									MAMARONECK, NEW YORK				
									SOCKET				
ISSUE	ITEM	CHANGED FROM	DATE	CH. NO.	DRAFTS	CHECKER	ENG. APP.						
TOLERANCES			SCALE: S401-83 (3891)						J.C. Biele				
DEC. DIM. ±			MAXIMUM ALLOWABLE TOLERANCES HAVE BEEN DETERMINED AND ANY DEVIATIONS WILL BE CAUSE FOR REJECTION. REMOVE ALL BURRS AND SHARP EDGES				TYPE & TEMPER	HEAT TREAT. SPEC.	DRAWN	CHECKED	FINAL APPROVAL		
FRAC. DIM. ±													
ANGULAR DIM. ±													
							FINISH & SPEC. NO.		ELEC. DES. APP	MECH. DES. APP	TS-145		

REQ. PER UNIT	USED ON			TS-146
	MODEL	ASSY. NO.	DATE	
2	GPT-40K	AX-209	7-29-60	

SPECIFICATIONS:

- a) REMOVABLE UNTUNED CRYSTAL MOUNT, FOR IN318 CRYSTAL OR EQUIVALENT.
- b) INPUT CONNECTOR TYPE N MALE,
- c) OUTPUT CONNECTOR TYPE UHF FEMALE.

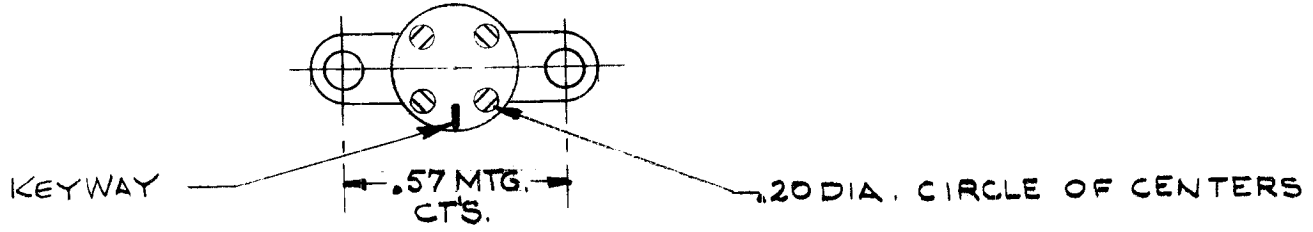


MODEL 150

								REQ.	ITEM	PART NO.	DESCRIPTION			SYMBOL	
											THE TECHNICAL MATERIEL CORP.				
											MAMARONECK, NEW YORK				
								STOCK SIZE			HOLDER, CRYSTAL, CONNECTOR				
								MATERIAL			TYPE				
ISSUE	ITEM	CHANGED FROM	DATE	CH. NO.	DRAFTS	CHECKER	ENG. APP.			DRAWN		CHECKED	FINAL APPROVAL		
TOLERANCES			SCALE: 5-401-110							DRAWN		CHECKED	FINAL APPROVAL		
DEC. DIM. ±			MAXIMUM ALLOWABLE TOLERANCES HAVE BEEN DETERMINED AND ANY DEVIATIONS WILL BE CAUSE FOR REJECTION. REMOVE ALL BURRS AND SHARP EDGES					TYPE & TEMPER		HEAT TREAT. SPEC.		DRAWN		CHECKED	FINAL APPROVAL
FRAC. DIM. ±															
ANGULAR DIM. ±								FINISH & SPEC. NO.		ELEC. DES. APP		MECH. DES. APP		TS-146	

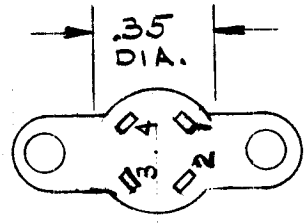
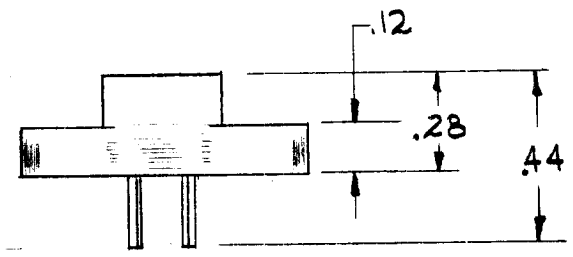
STANDARD DRAWING

REQ. PER UNIT 3	USED ON			TS-147	△
	MODEL	ASS'Y. NO.	DATE		
	CSS		4-19-60		



CONTACTS: SILVER PLATED BERYLLIUM-COPPER W/ GOLD FLASH.

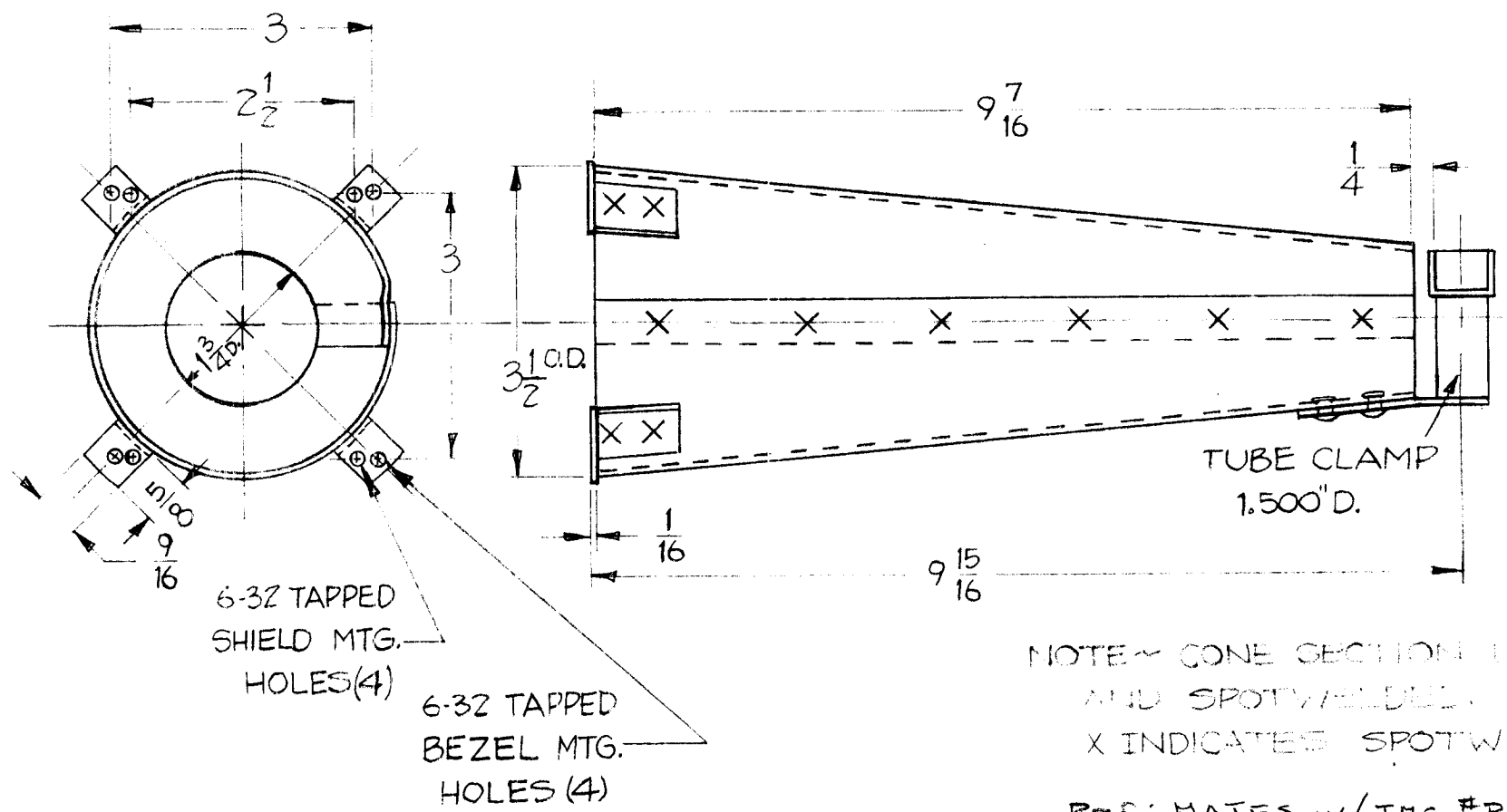
Socket: Molded of MICA FILLED PHENOLIC.



THE TECHNICAL MATERIEL CORP. # 22-11

REQ.	ITEM	PART NO.	DESCRIPTION				SYMBOL
			THE TECHNICAL MATERIEL CORP. MAMARONECK, NEW YORK.				
			STOCK SIZE				
			TRANSISTOR SOCKET				
			MATERIAL				
A			DIM. .35 WAS 35; Reloc. KEYWAY 4/4/66 16053 HLA				
ISSUE	ITEM	CHANGED FROM	DATE	CH. NO.	DRAFTS	CHECKER	ENG. APP.
TOLERANCES			SCALE:				
DEC. DIM. ±			MAXIMUM ALLOWABLE TOLERANCES HAVE BEEN DETERMINED AND ANY DEVIATIONS WILL BE CAUSE FOR REJECTION.				
FRAC. DIM. ±			REMOVE ALL BURRS AND SHARP EDGES				
ANGULAR DIM. ±							
TYPE & TEMPER		HEAT TREAT. SPEC.		DRAWN		CHECKED	
				J. G.		A. W.	
FINISH & SPEC. NO.		ELEC. DES. APP.		MECH. DES. APP.		FINAL APPROVAL	
						TS-147	
						A	

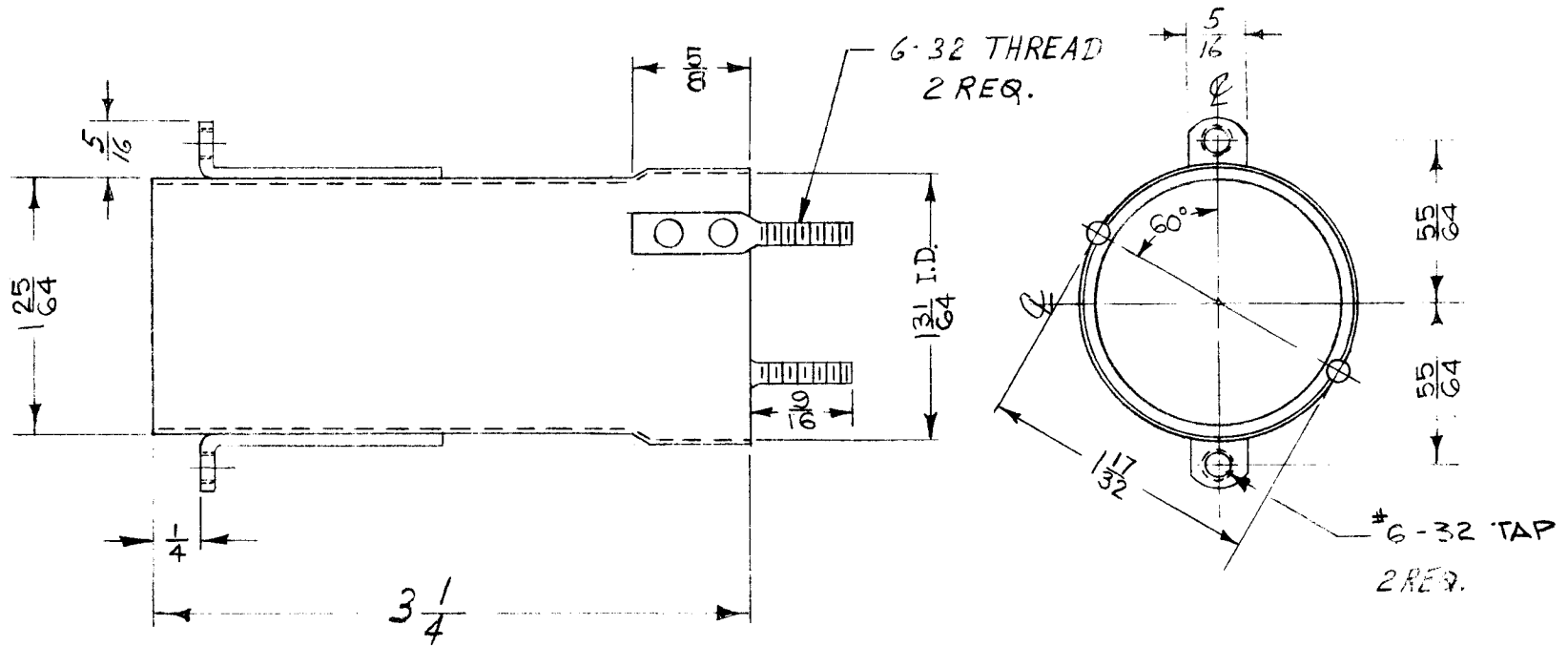
REQ. PER. UNIT	USED ON			TS-148
	MODEL	ASS'Y. NO.	DATE	
1	DVM-2		5-11-60	
1	DVM-4		2-6-62	



NOTE - CONE SECTION TAPPED AND SPOTWELDED.
 X INDICATES SPOTWELD
 REF: MATES W/TMC #PC-196

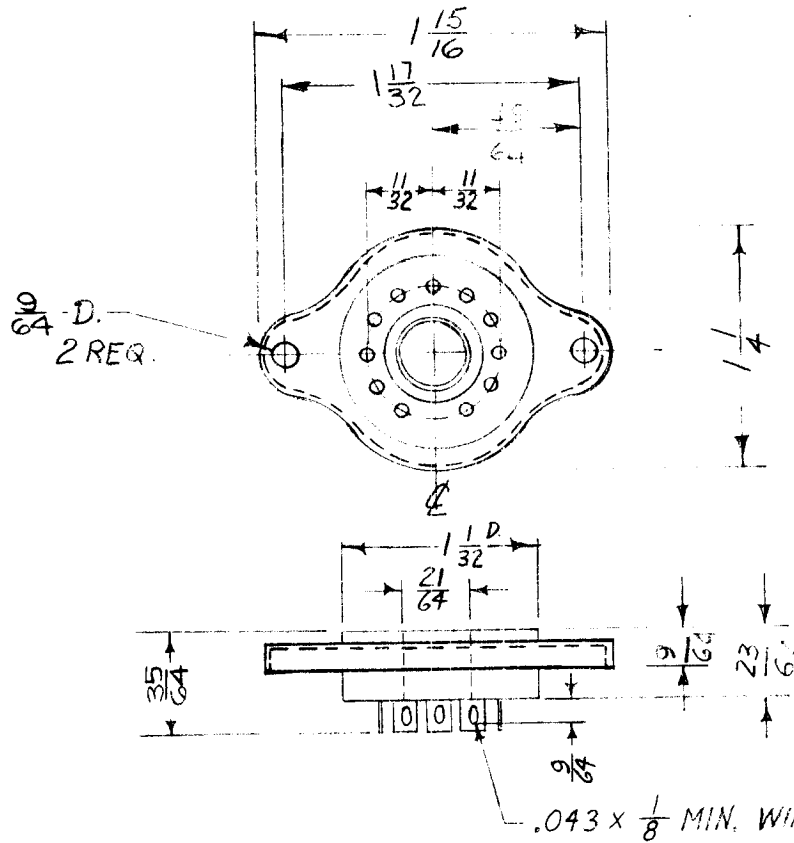
REQ.	ITEM	PART NO.	DESCRIPTION	SYMBOL					
			THE TECHNICAL MATERIEL CORP.						
			MAMARONECK, NEW YORK						
			SHIELD						
ISSUE	ITEM	CHANGED FROM	DATE	CH. NO.	DRAFTS	CHECKER	ENG. APP.		
TOLERANCES			SCALE: S-401-101 (K80803-G)						
DEC. DIM. ±			MAXIMUM ALLOWABLE TOLERANCES HAVE BEEN DETERMINED AND ANY DEVIATIONS WILL BE CAUSE FOR REJECTION. REMOVE ALL BURRS AND SHARP EDGES						
FRAC. DIM. ±									
ANGULAR DIM. ±									
TYPE & TEMPER		HEAT TREAT. SPEC.		DRAWN		CHECKED		FINAL APPROVAL	
ZINC CHROMATE PRIMER		BLACK BURNISH		11/1/62		[Signature]		TS-148	
FINISH & SPEC. NO.		ELEC. DES. APP		MECH. DES. APP					

REQ. PER. UNIT	USED ON			TS-151	B
	MODEL	ASS'Y. NO.	DATE		
1	SBG	CLL-1	8-1-60		



								REQ. ITEM	PART NO.	DESCRIPTION	SYMBOL
								.025		THE TECHNICAL MATERIEL CORP.	
								STOCK SIZE		MAMARONECK, NEW YORK	
								MU METAL		SHIELD, TUBE	
								MATERIAL			
ISSUE	ITEM	CHANGED FROM	DATE	CH. NO.	DRAFTS	CHECKER	ENG. APP.				
TOLERANCES			SCALE: 540:101 (80801-C)								
DEC. DIM. ±			MAXIMUM ALLOWABLE TOLERANCES HAVE BEEN DETERMINED AND ANY DEVIATIONS WILL BE CAUSE FOR REJECTION.								
FRAC. DIM. ± 1/64			REMOVE ALL BURRS AND SHARP EDGES								
ANGULAR DIM. ±			TYPE & TEMPER			HEATTREAT. SPEC.			DRAWN	CHECKED	FINAL APPROVAL
			BLACK PHOSPH.								TS-151
								FINISH & SPEC. NO.	ELEC. DES. APP	MECH. DES. APP	B

REQ. PER UNIT	USED ON			TS-152	E
	MODEL	ASS'Y. NO.	DATE		
1	SBG	CLL-1	8-2-60		



MATERIALS:

BODY: MOULDING-MICA-NA-AX-2

SADDLE: COLD ROLLED STEEL, CADMIUM PLATED

PINS: BERYLLIUM COPPER, ELECTRO-TIN PLATED OR SILVER PLATED.

CENTER EYELET: BRASS

NOTE:

11 PIN LAYOUT JETEC-E11-22

E		23/12/60	9/8/64							
D	1	PINS WERE SILVER PLATED	826.64	12177	MB					
C	2	DIMS CLARIFIED	4-9-63	8744						
B	2	1-1/32 WAS 1" DIA.	12-5-62	7768						
A	1	1-15/16 WAS 1-7/8	1-11-61	3882	RU					
		-101 Deleted From S401 Code, Co Name added as Ref.								
ISSUE	ITEM	CHANGED FROM	DATE	CH. NO.	DRAFTS	CHECKER	ENG. APP.			
TOLERANCES			SCALE:							
DEC. DIM. ±			MAXIMUM ALLOWABLE TOLERANCES HAVE BEEN DETERMINED AND ANY DEVIATIONS WILL BE CAUSE FOR REJECTION.							
FRAC. DIM. ± 1/64			REMOVE ALL BURRS AND SHARP EDGES							
ANGULAR DIM. ±										

ALDEN PROD. #411-SBUP BROCKTON, MASS

REQ.	ITEM	PART NO.	DESCRIPTION			SYMBOL
			THE TECHNICAL MATERIEL CORP.			
			MAMARONECK, NEW YORK			
			SOCKET, TUBE, 11 PIN			
			MATERIAL			
			TYPE & TEMPER	HEATTREAT. SPEC.	DRAWN	CHECKED
			FINISH & SPEC. NO.		ELEC. DES. APP	MECH. DES. APP
					TS-152	E

THE CONTENTS OF THIS DRAWING ARE THE EXCLUSIVE PROPERTY OF THE TECHNICAL MATERIEL CORP. ITS UNAUTHORIZED USE OR REPRODUCTION IN WHOLE OR IN PART IS STRICTLY FORBIDDEN.

REQ. PER UNIT

USED ON

MODEL

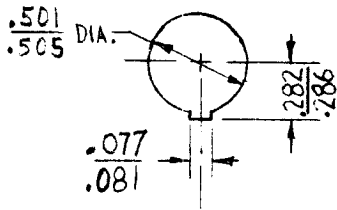
ASS'Y. NO.

DATE

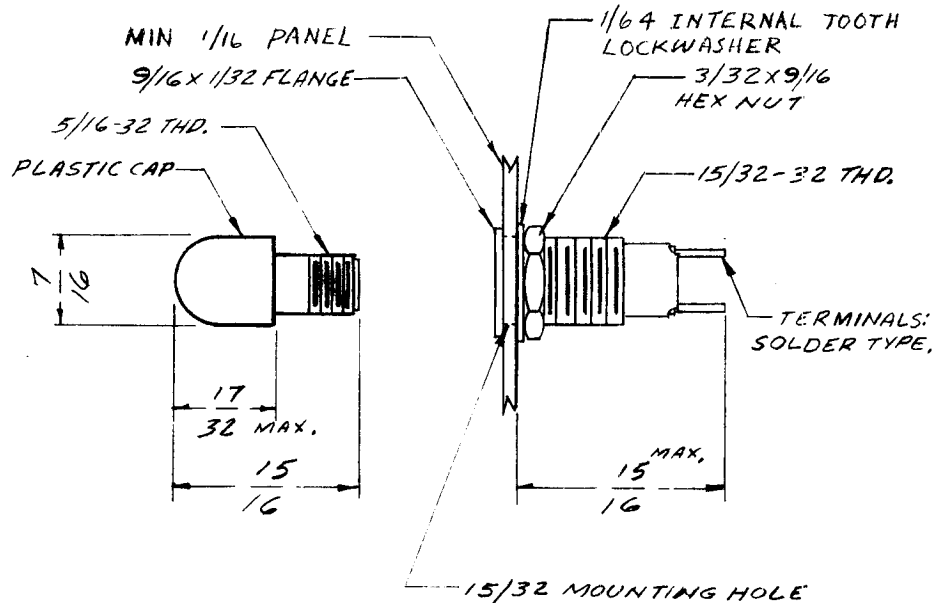
STAND.

10-24-61

TS-154 A



PANEL MOUNTING HOLE



DIM. FOR REF. ONLY

TMC PART NO.	MFG. NO.	LENS COLOR	MILITARY EQUIV.
TS-154-1	137-8536-931	RED	
TS-154-2	NOT AVAILABLE	NOT AVAILABLE	
TS-154-3	137-8536-933	YELLOW (AMBER)	
TS-154-4	NOT AVAILABLE	NOT AVAILABLE	
TS-154-5	137-8536-935	WHITE	
TS-154-6	137-8536-936	LIGHT YELLOW	
TS-154-7	137-8536-937	CLEAR (COLORLESS)	

NOTE:

For spare parts replacement of lens only, see dwg. LI-103.

STANDARD DRAWING

REQ.	ITEM	PART NO.	DESCRIPTION		SYMBOL
			THE TECHNICAL MATERIEL CORP. MAMARONECK, NEW YORK		
			LIGHT, INDICATOR		
			SUB-MINIATURE		
A	PANEL MTG. HOLE ADD.	331-65 13820	J.L.	J.L.	
SYM	DESCRIPTION	DATE	CH. NO.	DRAFTS	CHECKER
UNLESS OTHERWISE SPECIFIED: DIMENSIONS ARE IN INCHES TOLERANCES ON FRAC. ± 1/64 DEC. ± .005 ANGLES ± 1/2°		SCALE: 5-401-153(137-8536)			
		MAXIMUM ALLOWABLE TOLERANCES HAVE BEEN DETERMINED AND ANY DEVIATIONS WILL BE CAUSE FOR REJECTION. REMOVE ALL BURRS AND SHARP EDGES			
		TYPE & TEMPER		HEATTREAT. SPEC.	DRAWN
		BLACK NICKEL			
		FINISH & SPEC. NO.			
		W. S. RUZZO		10-25-61	RFM
		ELECT. DES. APP.		MECH. DES. APP.	TS-154 A

THE CONTENTS OF THIS DRAWING ARE THE EXCLUSIVE PROPERTY OF THE TECHNICAL MATERIEL CORP. ITS UNAUTHORIZED USE OR REPRODUCTION IN WHOLE OR IN PART IS STRICTLY FORBIDDEN.

REQ. PER UNIT

MODEL

USED ON

ASS'Y. NO.

DATE

HFR-1/C

5-1-62

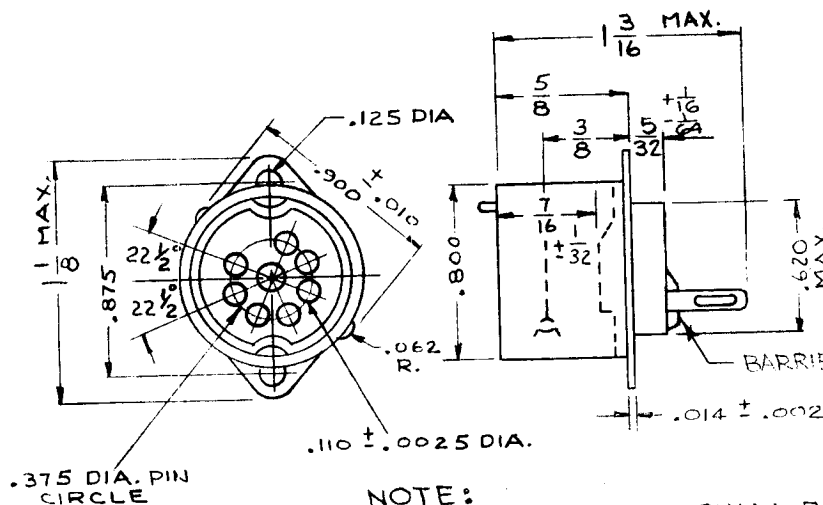
TS-155 B

TYPE INSULATING MATERIAL

TS-155CO1 CERAMIC, GRADE L-4B OR BETTER, JAN-I-10

TS-155 PO1 MOLDED THERMOSETTING PLASTIC MIL-M-14 TYPE MFE

THE SOCKET SHIELD BASE SHALL BE BRASS, NICKEL PLATED. THE CONTACT TABS SHALL BE HOT TIN DIPPED.



NOTE: THIS SOCKET SHALL BE THE SAME AS MIL TYPE TS102CO1 & TS102PO1 EXCEPT FOR REMOVAL OF CENTER SHIELD & NICKEL PLATING.

FOR SHIELD SEE TS-102

							REQ.	ITEM	PART NO.	DESCRIPTION	SYMBOL	
B	SOCKET SHIELD BASE WAS CADMIUM PLATED	8-26-63	9832	AL.	<i>YMC</i>	<i>476</i>				THE TECHNICAL MATERIEL CORP. MAMARONECK, NEW YORK		
A	DELETED SHIELD PICTORIAL, MODEL WAS HFR-1/N ON CHART L-4B WAS L-4B, MIL-M-14 WAS MIL-P-14 .032 DIM WAS CONTACT TAB DIM NOTE: OPTIONAL BARRIER ADDED FINISH WAS NICKEL, DIM .620 WAS .625	4-11-63	8762		<i>[Signature]</i>	<i>[Signature]</i>				SOCKET, 7 PIN MINIATURE (W/O CENTER SHIELD)		
SYM	DESCRIPTION	DATE	CH. NO.	DRAFTS	CHECKER	ENG. APP.				G.S.	<i>[Signature]</i>	
UNLESS OTHERWISE SPECIFIED: DIMENSIONS ARE IN INCHES TOLERANCES ON FRAC. ± 1/64 DEC. ± .005 ANGLES ± 1/2°		SCALE:		MAXIMUM ALLOWABLE TOLERANCES HAVE BEEN DETERMINED AND ANY DEVIATIONS WILL BE CAUSE FOR REJECTION. REMOVE ALL BURRS AND SHARP EDGES			TYPE & TEMPER	HEATTREAT. SPEC.	DRAWN	CHECKED	FINAL APPROVAL	
												TS-155 B
							FINISH & SPEC. NO.		ELC. DES. APP.	MECH. DES. APP.		

THE CONTENTS OF THIS DRAWING ARE THE EXCLUSIVE PROPERTY OF THE TECHNICAL MATERIEL CORP. ITS UNAUTHORIZED USE OR REPRODUCTION IN WHOLE OR IN PART IS STRICTLY FORBIDDEN.

REQ. PER UNIT
6

MODEL
HFS-1

USED ON

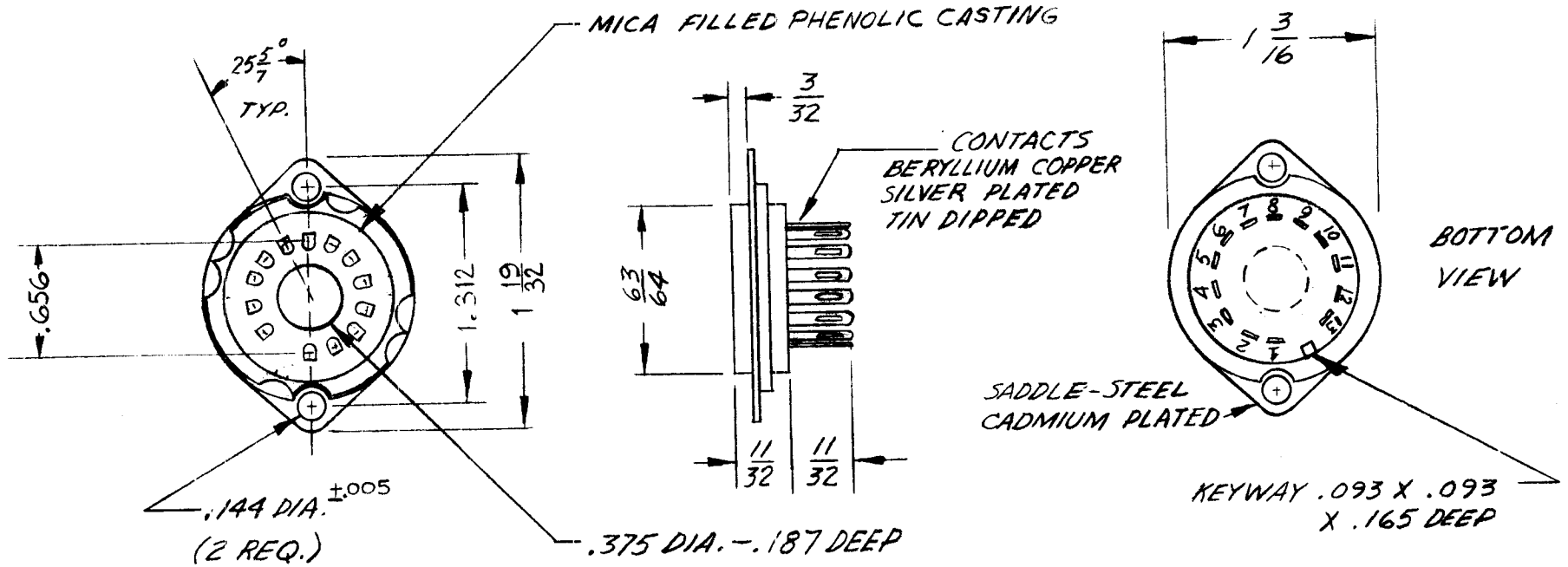
ASS'Y. NO.

DATE

8-15-62

TS-157

A



- DIMENSIONS FOR REF USE ONLY -

STANDARD DRAWING

REQ.	ITEM	PART NO.	STRAINER			DESCRIPTION	SYMBOL
			X			THE TECHNICAL MATERIEL CORP. MAMARONECK, NEW YORK	A
			STOCK SIZE				
			X				
			MATERIAL			SOCKET, TUBE DIGITAL READOUT	
A	TOL. ±.005 (SK112) (918.4) 168 #315-NO. 14-20 DELETED	6-236-14311	DKV.	JCH			
SYM	DESCRIPTION	DATE	CH. NO.	DRAFTS	CHECKER	ENG. APP.	
UNLESS OTHERWISE SPECIFIED: DIMENSIONS ARE IN INCHES TOLERANCES ON FRAC. ± 1/64 DEC. ± .005 ANGLES ± 1/2°		SCALE: 5401-174 (SK112)					
		MAXIMUM ALLOWABLE TOLERANCES HAVE BEEN DETERMINED AND ANY DEVIATIONS WILL BE CAUSE FOR REJECTION. REMOVE ALL BURRS AND SHARP EDGES					
				TYPE & TEMPER	HEATTREAT. SPEC.	DRAWN	CHECKED
				FINISH & SPEC. NO.		ELEC. DES. APP.	MECH. DES. APP.
						wh	RUZZO
						JMA	JMA
						TS-157	

THE CONTENTS OF THIS DRAWING ARE THE EXCLUSIVE PROPERTY OF THE TECHNICAL MATERIEL CORP. ITS UNAUTHORIZED USE OR REPRODUCTION IN WHOLE OR IN PART IS STRICTLY FORBIDDEN.

REQ. PER UNIT

MODEL

HFS-1

USED ON

ASS'Y. NO.

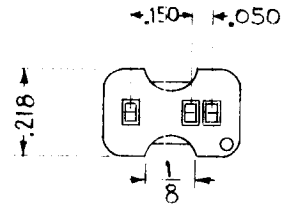
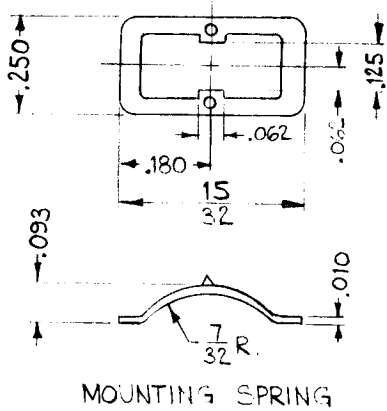
DATE

8-15-62

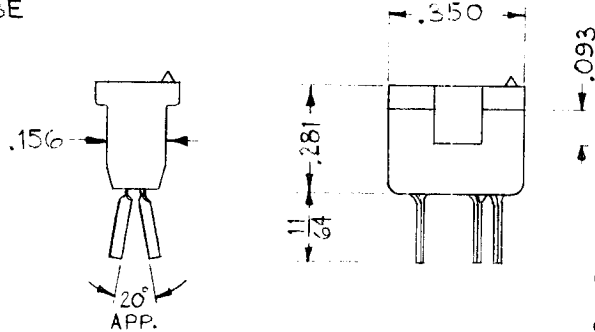
TS-158

SPECIFICATIONS~

CONTACTS ~ HEAT TREATED BERYLLIUM COPPER
 CASTING ~ MICA
 CONTACT FINISH ~ SILVER PLATED
 SPRING ~ TEMPERED STEEL



NOTE ~
 MOUNTING SPRING TO BE SUPPLIED BY MFG.



SOCKET

REF:
 SOCKET MFG NO. 46A20029
 MOUNTING SPRING MFG NO. L0X18516

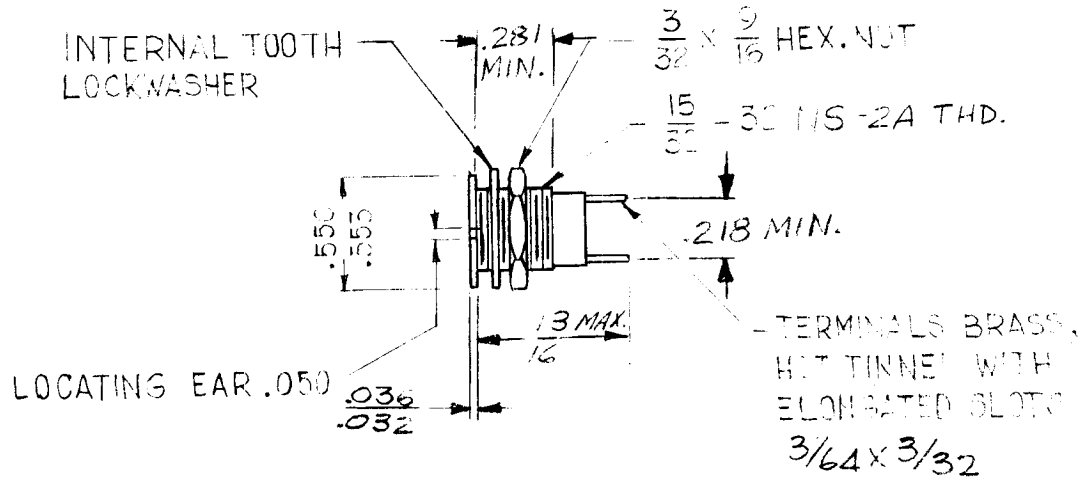
REQ.	ITEM	PART NO.	J. STRUMMER	DESCRIPTION	SYMBOL	
				THE TECHNICAL MATERIEL CORP.		
				MAMARONECK, NEW YORK		
				SOCKET, TRANSISTOR, 3-PRONG		
SYM	DESCRIPTION	DATE	CH. NO.	DRAFTS	CHECKER	ENG. APP.
UNLESS OTHERWISE SPECIFIED: DIMENSIONS ARE IN INCHES TOLERANCES ON FRAC. ± 1/64 DEC. ± .005 ANGLES ± 1/2°		SCALE: 3401-176 (3M-58)				
MAXIMUM ALLOWABLE TOLERANCES HAVE BEEN DETERMINED AND ANY DEVIATIONS WILL BE CAUSE FOR REJECTION. REMOVE ALL BURRS AND SHARP EDGES		TYPE & TEMPER		HEAT TREAT. SPEC.		
		FINISH & SPEC. NO.		W.G.F.	J. De	RF
				DRAWN	CHECKED	FINAL APPROVAL
				J.M.A.	J.M.A.	TS-158
				ELEC. DES. APP.	MECH. DES. APP.	

THE CONTENTS OF THIS DRAWING ARE THE EXCLUSIVE PROPERTY OF THE TECHNICAL MATERIEL CORP. ITS UNAUTHORIZED USE OR REPRODUCTION IN WHOLE OR IN PART IS STRICTLY FORBIDDEN.

REQ. PER UNIT	USED ON		
	MODEL	ASS'Y. NO.	DATE
1	HFS-1	3000	8-15-62

TS 159 B

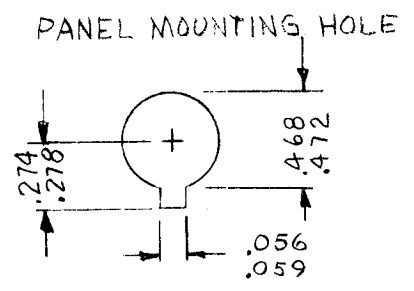
NOTE -
SPARE PARTS REPLACEMENT LAMP
HOLDER FOR TMC PART TS 153, TS 156



MATERIAL: BODY - ALUM. BLK. ANODIZE
HARDWARE

BRASS, BLACK OXIDE
WASHER, INTERNAL LOCK
PHOSPHOR BRONZE, WHITE NICKEL FINISH

MAX. PANEL THICKNESS - 3/16"



C 5401-410
5401-153 (162-8430)

MIL TYPE MS 25256

SYM	DESCRIPTION	DATE	CH. NO.	DRAFTS	CHECKER	ENG. APP.	REQ. ITEM	PART NO.	J. STRUMER	DESCRIPTION	SYMBOL	
										THE TECHNICAL MATERIEL CORP. MAMARONECK, NEW YORK.		
B	MTG HOSE ADDED, NOTES REV.	10/30/67	18579	NY	1/2	EFM		STOCK SIZE		LAMP HOLDER		
A	COMPLETELY REVISED	11/16/67	15142	EV	Q/B	PC		MATERIAL		SUB-MINIATURE		
									GD.L			
UNLESS OTHERWISE SPECIFIED: DIMENSIONS ARE IN INCHES TOLERANCES ON FRAC. ± 1/64 DEC. ± .005 ANGLES ± 1/2°		SCALE: DO NOT SCALE		MAXIMUM ALLOWABLE TOLERANCES HAVE BEEN DETERMINED AND ANY DEVIATIONS WILL BE CAUSE FOR REJECTION. REMOVE ALL BURRS AND SHARP EDGES			TYPE & TEMPER	HEATTREAT. SPEC.	DRAWN	CHECKED	FINAL APPROVAL	
									JMA	JMT	TS 159	B
							FINISH & SPEC. NO.		ELEC. DES. APP.	MECH. DES. APP.		

THE CONTENTS OF THIS DRAWING ARE THE EXCLUSIVE PROPERTY OF THE TECHNICAL MATERIEL CORP. ITS UNAUTHORIZED USE FOR REPRODUCTION IN WHOLE OR IN PART IS STRICTLY FORBIDDEN.

REQ. PER UNIT

USED ON

MODEL

ASS'Y. NO.

DATE

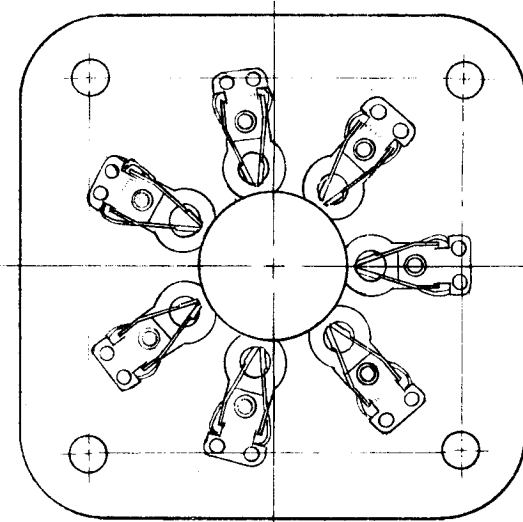
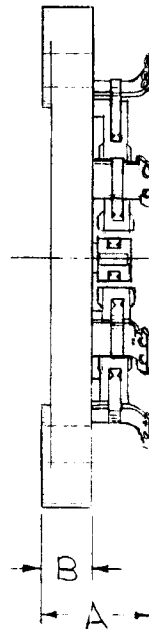
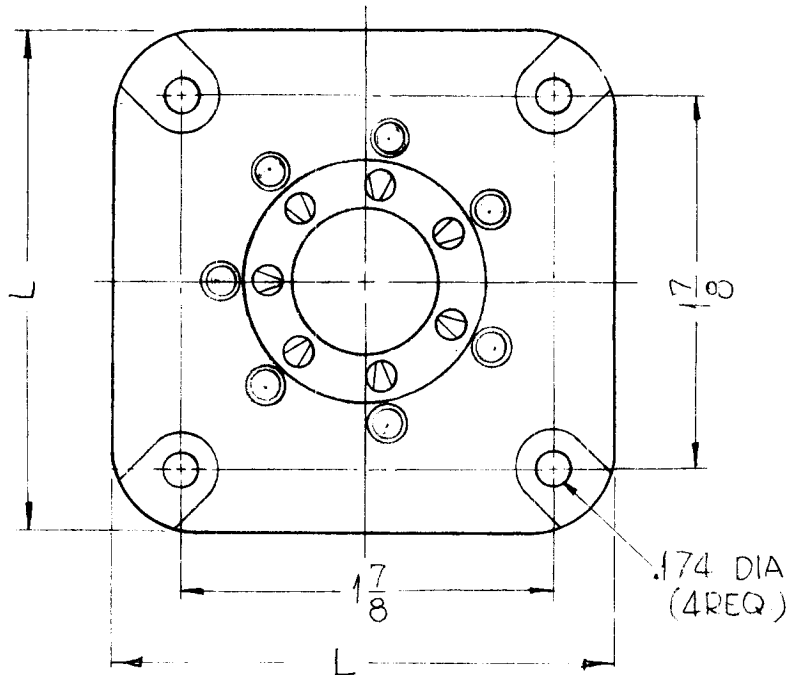
GPT-200K

11-30-62

TS-162

0

TMC PART NO.	MFR. PART NO.	TYPE	DIMENSIONS			GENERAL SPECIFICATIONS
			A	B	L	
TS-162-1	122-237-1	STANDARD	9/16	1/4	2-5/8	GLAZED STEATITE BASES, DC-200 TREATED. CONTACTS-PLATED BRASS WITH STEEL SPRINGS. ETCHED ALUMINUM SHIELDS ON SHIELDED TYPES.
TS-162-2	122-237-100	INDUSTRIAL	9/16	1/4	2-5/8	GLAZED STEATITE BASES, DC-200 TREATED. CONTACTS-PHOSPHUR BRONZE WITH BERYLLIUM COPPER SPRINGS, .0005 SILVER PLATED. SHIELDS ON SHIELDED TYPES ARE IRIIDITE NO. 14 TREATED ALUMINUM. FUNGUS RESISTANT CUSHION WASHERS UNDER CONTACTS.
TS-162-3	122-237-200	MILITARY	9/16	1/4	2-5/8	GLAZED STEATITE BASES, DC-200 IMPREGNATED. CONTACTS-PHOSPHUR BRONZE AND BERYLLIUM COPPER SPRINGS SILVER PLATED .001 - HOT TINNED DIPPED SOLDER TERMINALS. FUNGUS RESISTANT GLASS BASE MELAMINE CUSHION WASHERS, IRIIDITE NO. 14 TREATED ALUMINUM SHIELDS ON SHIELDED TYPES. ENTIRE SOCKET PROTECTED FOR 200 HOUR SALT SPRAY TEST.



REQ.	ITEM	PART NO.	DESCRIPTION			SYMBOL
			THE TECHNICAL MATERIEL CORP. MAMARONECK. NEW YORK			
			STOCK SIZE			
			SOCKET, TUBE, GIANT 7 PIN			
			MATERIAL			
			SRG	JCS	Roe	
			TYPE & TEMPER	HEAT TREAT. SPEC.	DRAWN	CHECKED
					TS-162	0
			FINISH & SPEC. NO.		ELEC. DES. APP.	MECH. DES. APP.

UNLESS OTHERWISE SPECIFIED DIMENSIONS ARE IN INCHES AND INCLUDE CHEMICALLY APPLIED OR PLATED FINISHES		SCALE				
DECIMALS X ± .05 .XX ± .01 .XXX ± .005	TOLERANCES	FRACTIONS ± 1/64 ANGLES ± 0° 30'	CODE C	S401-47		

THE CONTENTS OF THIS DRAWING ARE THE EXCLUSIVE PROPERTY OF THE TECHNICAL MATERIEL CORP. ITS UNAUTHORIZED USE FOR REPRODUCTION IN WHOLE OR IN PART IS STRICTLY FORBIDDEN.

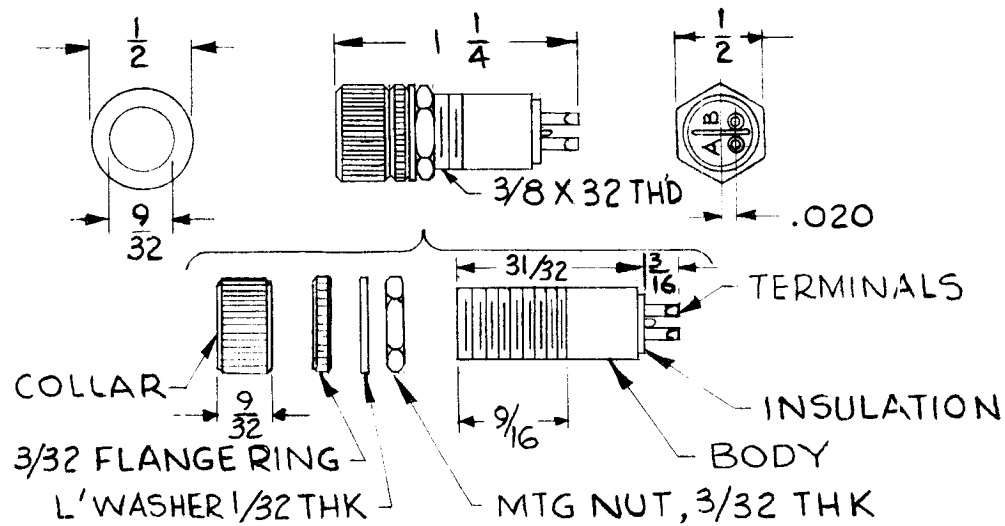
REQ. PER UNIT	USED ON		
	MODEL	ASS'Y. NO.	DATE
1	TTR-10		

TS-164

TMC PART NO.	MFR NO.
TS-164-1	7538

SPECIFICATIONS

1. MOUNTING HOLE: 3/8 DIAMETER
2. LAMP ACCOMMODATION: TMC NO. BI-112
3. MATERIALS AND FINISHES:
 - A. Body, Flange Ring and Collar: Aluminum, Black Anodized
 - B. Mounting Nut: Brass, White Nickel Plate
 - C. Lockwasher, Internal Tooth: Phosphor Bronze, White Nickel Plate
 - D. Insulation: Molded
 - E. Terminals: Phosphor Bronze, Silver Plated and Gold Finished



MFR REF DIALIGHT CORP

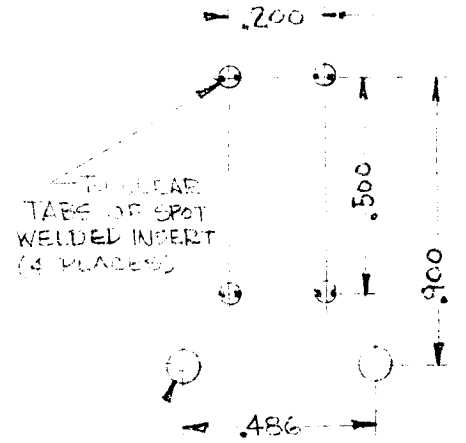
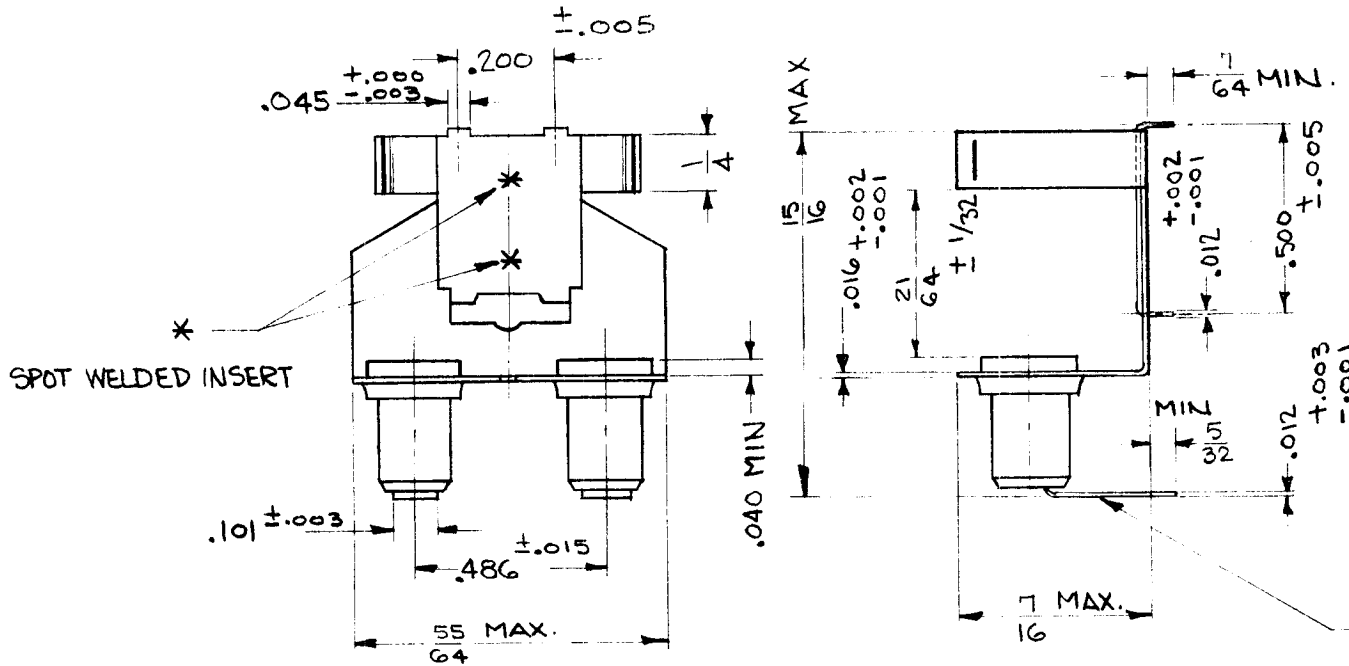
								REQ. ITEM	PART NO.	KONIN	DESCRIPTION	SYMBOL
											THE TECHNICAL MATERIEL CORP. MAMARONECK. NEW YORK	
											LAMPHOLDER	
SYM	DESCRIPTION	DATE	CH. NO.	DRAFTS	CHECKER	ENG. APP.						
UNLESS OTHERWISE SPECIFIED DIMENSIONS ARE IN INCHES AND INCLUDE CHEMICALLY APPLIED OR PLATED FINISHES		SCALE										
DECIMALS .X ± .05 .XX ± .01 .XXX ± .005	TOLERANCES	FRACTIONS ± 1/64 ANGLES ± 0° 30'	CODE					TYPE & TEMPER	HEAT TREAT. SPEC.	DRAWN	CHECKED	FINAL APPROVAL
										RKohn	4/22/63	TS-164
								FINISH & SPEC. NO.		ELEC. DES. APP.	MECH. DES. APP.	

THE CONTENTS OF THIS DRAWING ARE THE EXCLUSIVE PROPERTY OF THE TECHNICAL MATERIEL CORP. ITS UNAUTHORIZED USE FOR REPRODUCTION IN WHOLE OR IN PART IS STRICTLY FORBIDDEN.

REQ. PER UNIT	USED ON	
	MODEL	DATE
1	YLR-1, LFS-1 GPR-92	6-18-63
	A-2120	

TS-167 0

TMC PART NO.	MFG PART NO.	INSULATING MAT'L.	HOLDING CLIP MAT'L.	CONTACT MAT'L.	CONTACT PLATING
TS-167-1	8000-A910	NYLON	STEEL	PHOSPHOR BRZ	CADMIUM



TO CLEAR CONTACTS (2 PLACES)
~ MOUNTING DETAIL ~

CONTACTS HAVE 3/64 x 5/32 TAIL SLOT.

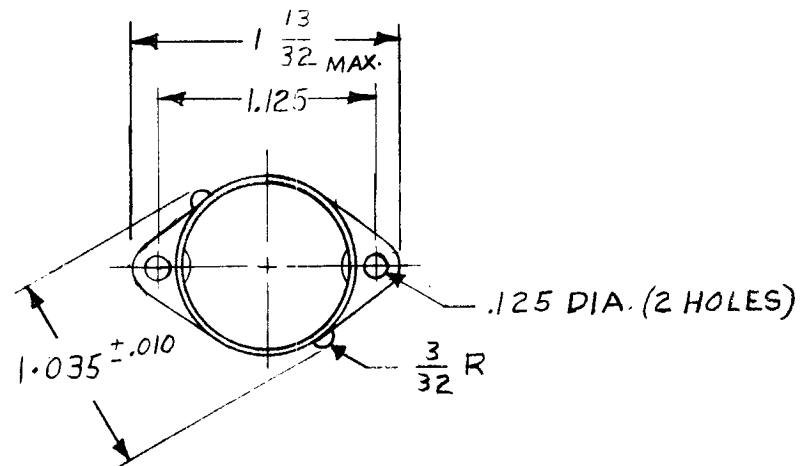
STANDARD DRAWING

							REQ. ITEM	PART NO.	M. GELLMAN	DESCRIPTION	SYMBOL
								#		THE TECHNICAL MATERIEL CORP.	
								STOCK SIZE		MAMARONECK.	
								SEE CHART		NEW YORK	
								MATERIAL		SOCKET, CRYSTAL	
0	ORIGINAL RELEASE FOR PRODUCTION	5/11/64	0	A.M.							
SYM	DESCRIPTION	DATE	CH. NO.	DRAFTS	CHECKER	ENG. APP.					
	UNLESS OTHERWISE SPECIFIED DIMENSIONS ARE IN INCHES AND INCLUDE CHEMICALLY APPLIED OR PLATED FINISHES		SCALE	DO NOT SCALE							
	DECIMALS .X ± .05 .XX ± .01 .XXX ± .005	TOLERANCES	FRACTIONS ± 1/64 ANGLES ± 0° 30'	CODE C	S 431-10E						
							TYPE & TEMPER	HEAT TREAT. SPEC.	DRAWN	CHECKED	FINAL APPROVAL
							FINISH & SPEC. NO.		ELC. DES. APP.	MECH. DES. APP.	TS-167 0

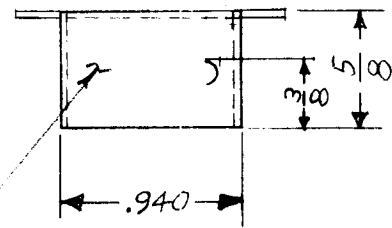
STANDARD DRAWING

TMC NO.	MFG. NO.	SOCKET USED WITH	TMC SOCKET NO
TS-169-1	9716-11	9 PIN MINATURE	TS-131

REQ. PER UNIT	USED ON			TS-169	○
	MODEL	ASS'Y. NO.	DATE		
1	GPE-1A				



NOTE:
FOR USE WITH BOTTOM MOUNT SOCKET WHEN TUBE SHIELD IS REQUIRED



METAL STAMP TMC PART NO. 1/8 HIGH GOTHIC.

SYM	DESCRIPTION	DATE	CH. NO.	DRAFTS	CHECKER	ENG. APP.	REQ. ITEM	PART NO.	DESCRIPTION	SYMBOL	
							.014	$\begin{matrix} +.005 \\ -.002 \end{matrix}$	THE TECHNICAL MATERIEL CORP. MAMARONECK, NEW YORK		
○	ORIGINAL RELEASE FOR PRODUCTION	3/31/64					STOCK SIZE		BASE, SHIELD, TUBE		
X	EXPERIMENTAL RELEASE	3/23/64			AM.		BRASS				
							MATERIAL				
									A.M.	@ 3-24-64	
UNLESS OTHERWISE SPECIFIED DIMENSIONS ARE IN INCHES AND INCLUDE CHEMICALLY APPLIED OR PLATED FINISHES		SCALE		1:1					DRAWN	CHECKED	FINAL APPROVAL
DECIMALS .X ± .05 .XX ± .01 .XXX ± .005		FRACTIONS ± 1/64 ANGLES ± 0° 30'		CODE C			S401-181				RAC 3-31-64
TOLERANCES							S-135 NICKEL PLATE				TS-169
							FINISH & SPEC. NO.		ELEC. DES. APP.	MECH. DES. APP.	○

STANDARD DRAWING

REQ. PER UNIT

USED ON

MODEL

ASS'Y. NO.

DATE

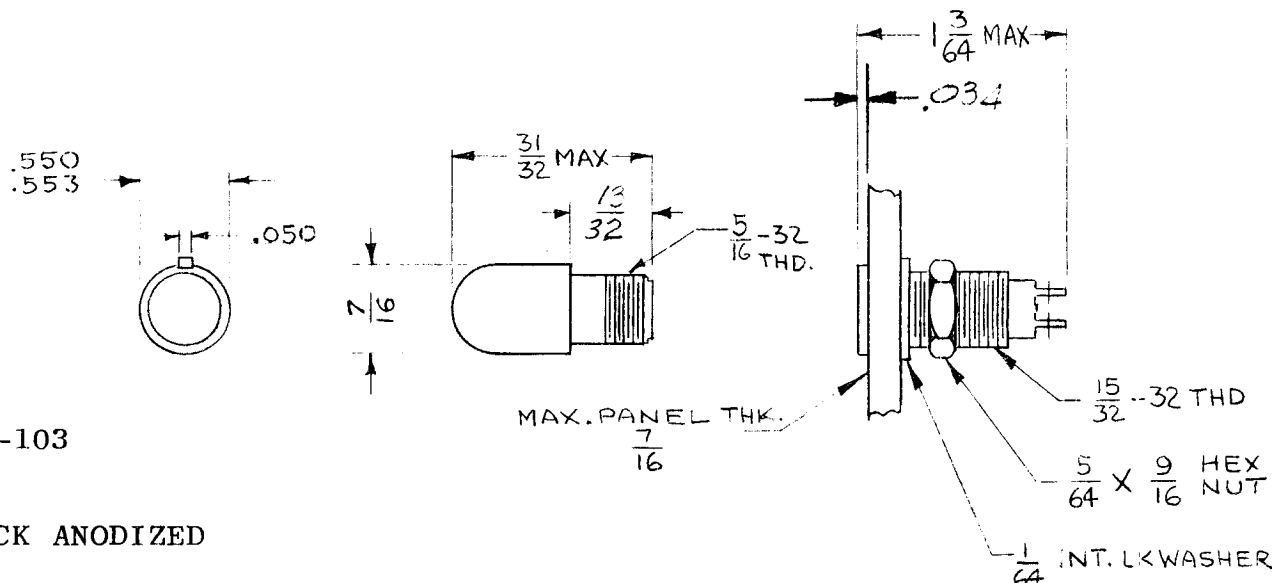
BSP-4

7-10-64

TS175

A

TMC P/N	MFG PART NO.	LENS COLOR	RESISTOR	LAMP USED
TS-175-1	137-8864-935-532	WHITE	33KΩ	B111-2



NOTE: FOR REPLACEMENT OF LENS USE LI-103

MATERIAL & FINISH:

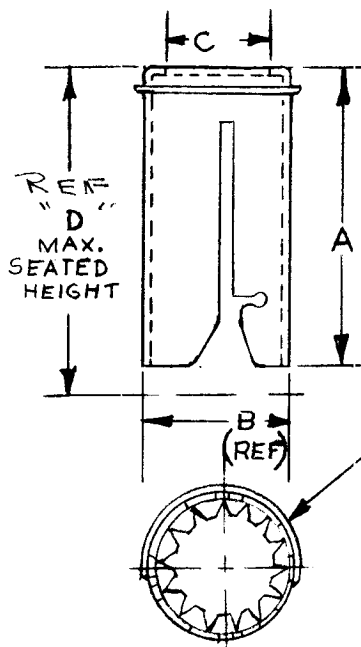
MOUNTING BUSHING: ALUMINUM WITH BLACK ANODIZED FINISH.

HARDWARE: LOCKWASHER & NUT- STEEL, CADMIUM PLATE WITH IRIDITE COAT.

TERMINALS: BRASS, HOT TINNED (+ SIGN MARKED ON CENTER CONTACT)

REQ.	ITEM	PART NO.	DESCRIPTION	SYMBOL
A	MFG PT NO. W/137-8864-935 RES. W/13/32W 27/64 .034 ADDED	14904	THE TECHNICAL MATERIEL CORP. MAMARONECK. NEW YORK	
Ø	ORIGINAL RELEASE FOR PRODUCTION	9-9-64	INDICATOR, LIGHT, SUB-MIN. W/BUILT-IN RESISTOR.	
X	EXPER. RELEASE	7.10.64		
SYM	DESCRIPTION	DATE	CH. NO.	DRAFTS
UNLESS OTHERWISE SPECIFIED DIMENSIONS ARE IN INCHES AND INCLUDE CHEMICALLY APPLIED OR PLATED FINISHES		SCALE	NONE	
DECIMALS .X ± .05 .XX ± .01 .XXX ± .005	TOLERANCES	FRACTIONS ± 1/64 ANGLES ± 0° 30'	CODE	S401-153
TYPE & TEMPER		HEAT TREAT. SPEC.	DRAWN	CHECKED
FINISH & SPEC. NO.		ELEC. DES. APP.	MECH. DES. APP.	FINAL APPROVAL
		7.10.64		TS175
				A

						REQ. PER UNIT	USED ON			TS 178	Ø
							MODEL	ASS'Y. NO.	DATE		
							CHG-3				
TMC P/N	MFG P/N	A ± 1/16	B	C ± 1/16	D REF	TUBE BULB SIZE	MATING BASE FOR REF ONLY				
TS 178-1	T9-3030-5H	2 15/16	1.375	1 1/16	3 3/16	T9	TS 177-1				



NOTE HANDLE INCREASES MAX. DIA. 3/16

MATERIAL: ALUMINUM SHELL, BERYLLIUM COPPER SPRING LINERS & HANDLE
 FINISH: BLACK DRY CONDUCTIVE LUBRICANT "HENDERLUBE"
 MEET HEAT DISSIPATION REQUIREMENTS OF MIL-S-9372

						REQ. ITEM	PART NO.	ANGER	DESCRIPTION	SYMBOL			
						STOCK SIZE		THE TECHNICAL MATERIEL CORP. MAMARONECK, NEW YORK					
						MATERIAL		SHIELD, TUBE					
Ø	ORIGINAL RELEASE FOR PRODUCTION	6/14/65	AA	JC									
SYM	DESCRIPTION	DATE	CH. NO.	DRAFTS	CHECKER	ENG. APP.							
UNLESS OTHERWISE SPECIFIED DIMENSIONS ARE IN INCHES AND INCLUDE CHEMICALLY APPLIED OR PLATED FINISHES		SCALE				S 401-312							
DECIMALS .X ± .05 .XX ± .01 .XXX ± .005		FRACTIONS ± 1/64 ANGLES ± 0° 30'		TOLERANCES		CODE		TYPE & TEMPER		HEAT TREAT. SPEC.	DRAWN	CHECKED	FINAL APPROVAL
								FINISH & SPEC. NO.		ELEC. DES. APP.	MECH. DES. APP.	TS 178	Ø

CHART 1

SYMBOL	INSULATOR MATERIAL
P	LOW LOSS PHENOLIC
S	STEATITE

CHART 2

SYMBOL	CONTACTS MATERIAL
B	BRASS CAD. PLATE
P	PHOSPHOR BRONZE SILVERPLATE HOT TINNED
S	BERYLIUM COPPER SILVER PLATE HOT TINNED

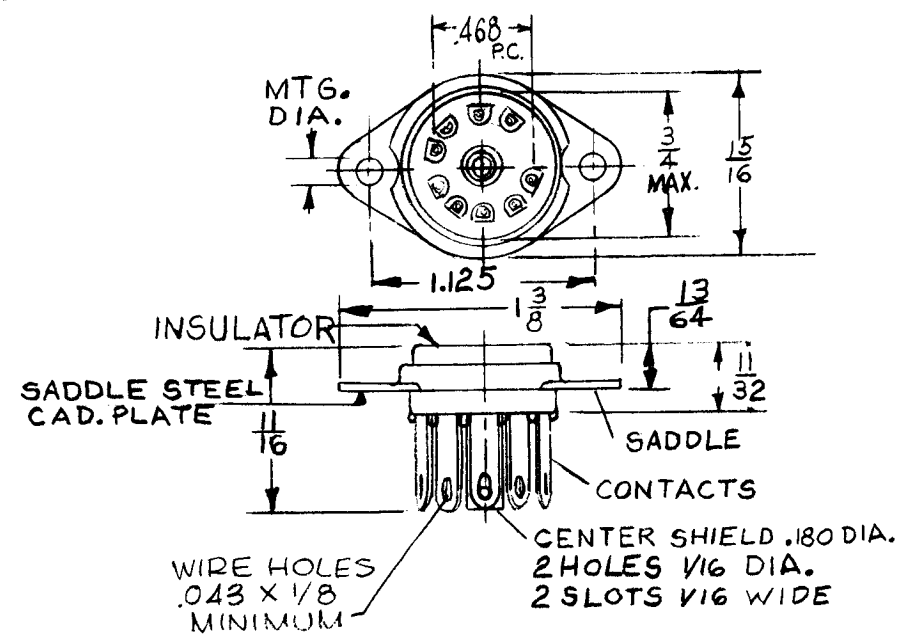
CHART 3

SYMBOL	CENTER SHIELD
W	BRASS CAD. PLATE
N	NONE

S 401-181 { 9739-7 OR EQUIV }
 S 401-176 }
 S 401-379 }

REQ. PER UNIT	USED ON		
	MODEL	ASS'Y. NO.	DATE
			6-16-65

TS 179 Ø

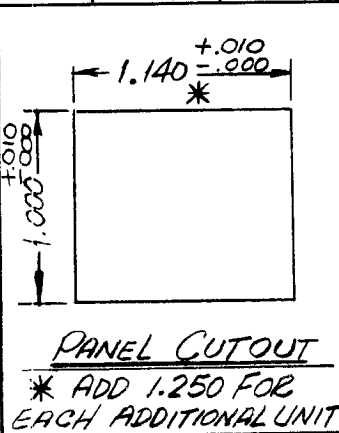
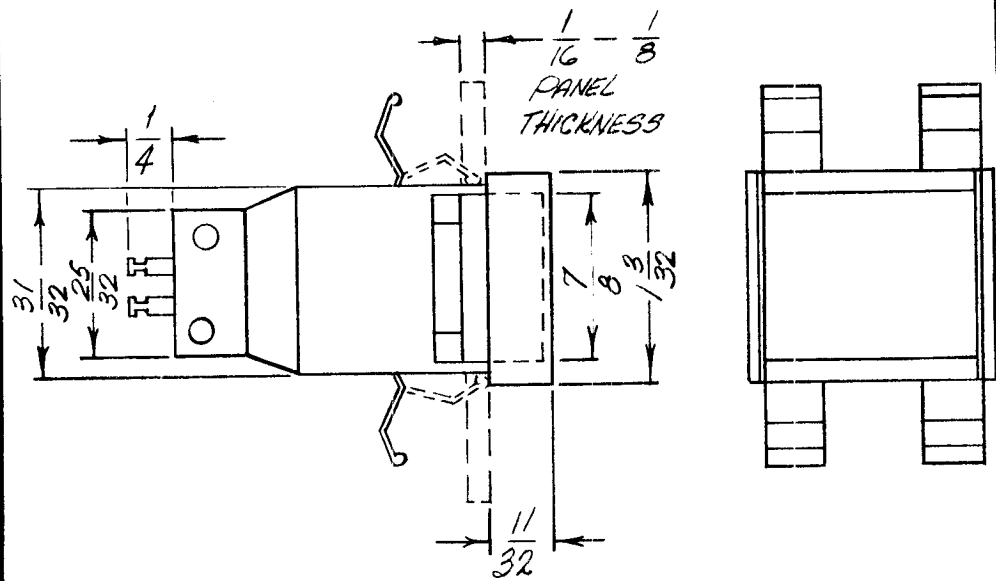
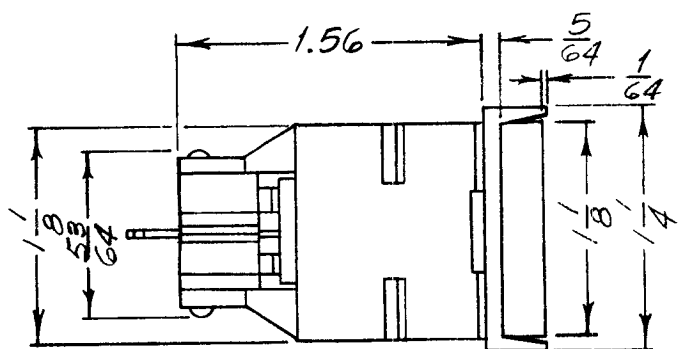


TMC PART #

<u>TS179</u>	<u>P</u>	<u>P</u>	<u>W</u>
BASIC P/N	INSULATOR MATERIAL	CONTACT MATERIAL	CENTER SHIELD
	CHART 1	CHART 2	CHART 3

SADDLE MATERIAL STEEL CAD. PLATE.

REQ. ITEM	PART NO.	DESCRIPTION	SYMBOL
		THE TECHNICAL MATERIEL CORP. MAMARONECK. NEW YORK	
		TUBE SOCKET 9 PIN MINIATURE	
		TOP MOUNT	
		DRAWN: <i>JCS</i> CHECKED: <i>JCS</i> FINAL APPROVAL: <i>M...</i>	
		DATE: 6-16-65	TS 179
			Ø



LENS COLOR CODE	
W	WHITE
R	RED
G	GREEN
B	BLUE
Y	YELLOW

SPECIFICATIONS

BODY : BLACK PLASTIC

LAMP : NOT SUPPLIED. USE TMC BI 110

LENS LOCK : SNAP IN

NOTE: WHEN ENGRAVED BUTTONS OR SPARE NON-ENGRAVED BUTTONS ARE REQUIRED USE TMC LI114.

TMC PART NO. TO BE IN FOLLOWING FORM :

TS184 - R

BASIC TMC P/N, SOCKET W/O LENS

WHEN LENS IS REQ'D. ADD LENS COLOR CODE

BODY

REQ.	ITEM	PART NO.	DESCRIPTION	SYMBOL
		4	THE TECHNICAL MATERIEL CORP. MAMARONECK, NEW YORK	
		STOCK SIZE	INDICATOR, LIGHT	
		4		
		MATERIAL		
		4		
		TYPE & TEMPER		
		4		
		HEAT TREAT. SPEC.		
		4		
		FINISH & SPEC. NO.		
		4		

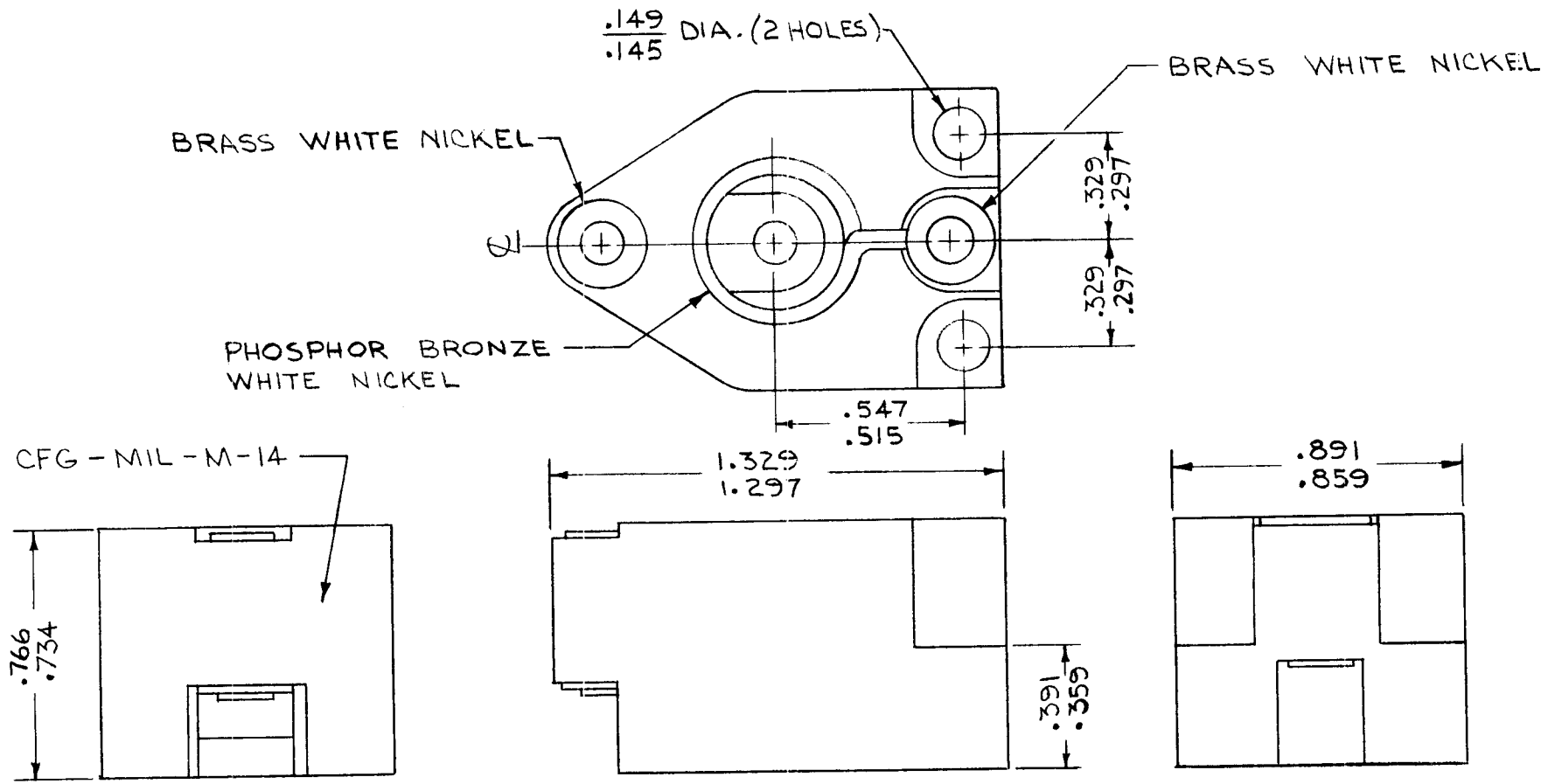
UNLESS OTHERWISE SPECIFIED DIMENSIONS ARE IN INCHES AND INCLUDE CHEMICALLY APPLIED OR PLATED FINISHES	SCALE	4	
DECIMALS .X ± .05 .XX ± .01 .XXX ± .005	FRACTIONS ± 1/64 ANGLES ± 0° 30'	CODE C	5401-282 (01-865000)

SYM	DESCRIPTION	DATE	CH. NO.	DRAFTS	CHECKER	ENG. APP.
		3.1.67	+	4/10		

DRAWN	CHECKED	FINAL APPROVAL	
H. AUSTIN	2/28/67		
ELEC. DES. APP.	MECH. DES. APP.		TS184

STANDARD DRAWING

REQ. PER UNIT	USED ON			TS186	Ø
	MODEL	ASS'Y. NO.	DATE		
	RAK-110-2		9-26-66		



NOTE:
 WILL ACCOMMODATE: CANDELABRA SCREW BASE LAMPS

REQ.	ITEM	PART NO.	DESCRIPTION				SYMBOL	
Ø			THE TECHNICAL MATERIEL CORP. MAMARONECK, NEW YORK					
			LAMPHOLDER					
X			AS NOTED					
			MATERIAL					
			TYPE & TEMPER HEAT TREAT. SPEC.					
			FINISH & SPEC. NO.					
UNLESS OTHERWISE SPECIFIED DIMENSIONS ARE IN INCHES AND INCLUDE CHEMICALLY APPLIED OR PLATED FINISHES			SCALE 2:1		DRAWN RME		CHECKED <i>[Signature]</i>	FINAL APPROVAL <i>[Signature]</i>
DECIMALS .X ± .05 .XX ± .01 .XXX ± .005	TOLERANCES	FRACTIONS ± 1/64 ANGLES ± 0° 30'	CODE S401-153 503-5038-000	ELEC. DES. APP. <i>[Signature]</i>		MECH. DES. APP. JC 9-26-66		TS 186

APPLICATION

QTY	MODEL USED ON	ASS'Y NO.	LTR	DESCRIPTION	DATE	E. M. N. NO	DRAFT	CHKD	APPD
1	BCT 10KA		X	EXPERIMENTAL RELEASE	8/7/67	X	C.V.		
			Ø	ORIG RELEASE FOR PROD.		Ø	C.V.	JAD	

REVISIONS

TMC P/N	MANUFACTURE	MANUFACTURES P/N
TS188	S401-23	SK 1510

VENDOR MUST SUPPLY INFORMATION WITH THIS ITEM

INFORMATION TO CONTAIN SUFFICIENT DATA TO IDENTIFY THE PART AND ESTABLISH ITS ELECTRICAL AND MECHANICAL CHARACTERISTICS AS DESCRIBED IN HIS PUBLISHED CATALOGS FOR QUALITY ASSURANCE

DIMENSION TOLERANCES WILL BE AS DESCRIBED IN MANUFACTURES LITERATURE

UNLESS OTHERWISE SPECIFIED DIMENSIONS ARE IN INCHES AND INCLUDE CHEMICALLY APPLIED OR PLATED FINISHES	REQ'D ITEM	PART NUMBER	DESCRIPTION	SYM.
DECIMALS FRACTIONS .X ± .05 1/64 .XX ± .01 TOLS. ANGLES .XXX ± .005 0°-30'	F. BUDETTI		LIST OF MATERIAL	
MATERIAL	FINAL APPROVAL	DATE	THE TECHNICAL MATERIEL CORP. MAMARONECK, NEW YORK	
FINISH	MECH. DES.	DATE	SOCKET, TUBE	
	ELECT. DES.	DATE		
	CHECKED	DATE		
	DRAWN	DATE		
	SIZE	CODE IDENT. NO.	DWG NO.	ISSUE
	A	82679	TS 188	Ø
	SCALE	M/L	SHEET	OF

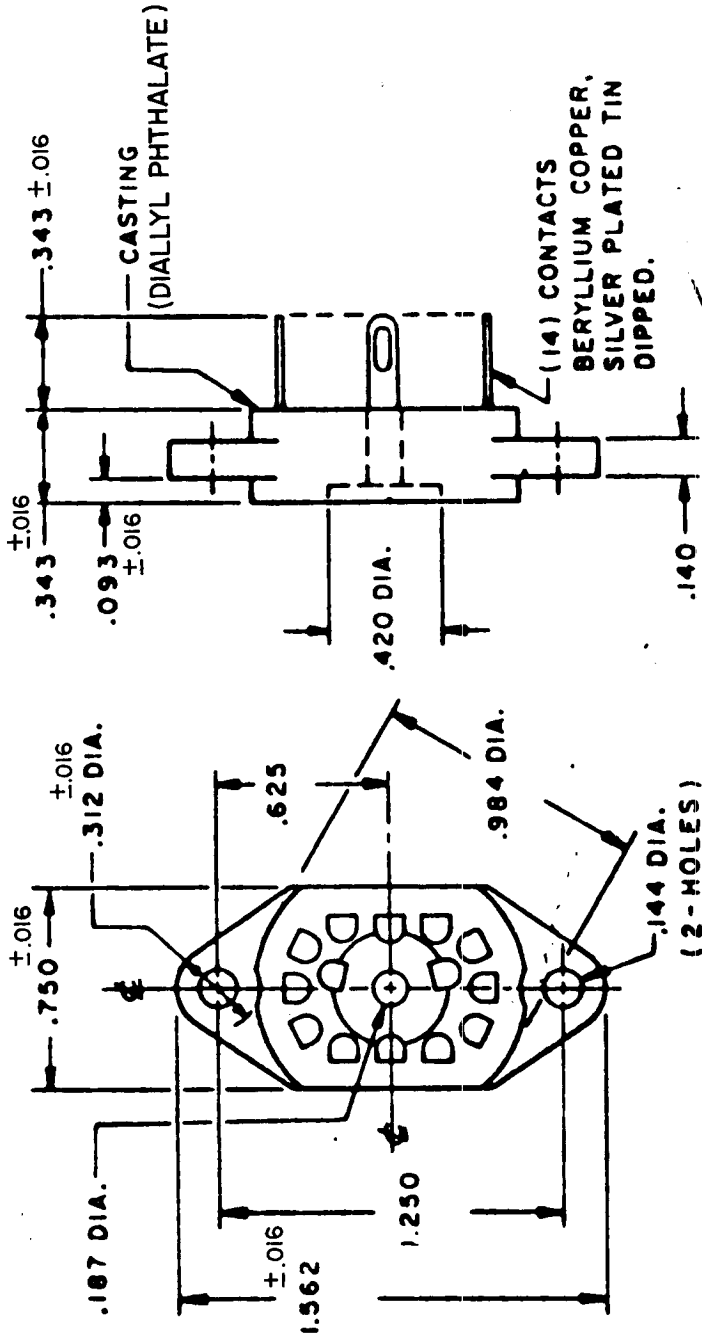
NOTICE TO PERSONS RECEIVING THIS DRAWING
 THE TECHNICAL MATERIEL CORPORATION claims proprietary right in the material disclosed hereon. This drawing is issued in confidence for engineering information only and may not be reproduced or used to manufacture anything shown hereon without permission from THE TECHNICAL MATERIEL CORPORATION to the user. This drawing is loaned for mutual assistance and is subject to recall at any time.

APPLICATION

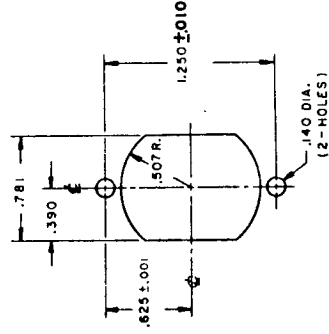
QTY	MODEL USED ON	ASSY NO.	LTR	DESCRIPTION	DATE	E.M.N.NO	DRAFT	CHKD	APPD
	RTIH-3		X	EXPERIMENTAL RELEASE	8/15/68		C.V.		Wde

Ø	ORIG. RELEASE FOR PROD.	19/28/68	Ø	R.G.					HO
A	TOL. ACC. MAT. MAT. FAULTS	19/28/68							

REVISIONS



TOP VIEW



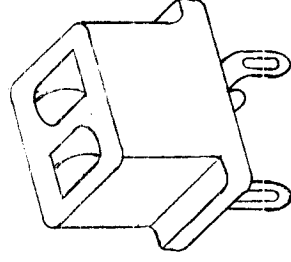
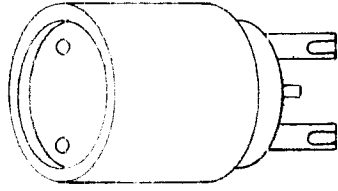
MOUNTING HOLE LAYOUT

REF: USE WITH TMC P/N IC104

UNLESS OTHERWISE SPECIFIED DIMENSIONS ARE IN INCHES AND INCLUDE CHEMICALLY APPLIED OR PLATED FINISHES		REQ'D ITEM	PART NUMBER	DESCRIPTION	SYM.
DECIMALS		LIST OF MATERIAL			
FRACTIONS		THE TECHNICAL MATERIEL CORP.			
.X ± .05		MAMARONECK, NEW YORK			
.XX ± .01		SOCKET, GENERAL PURPOSE			
.XXX ± .005		SIZE CODE IDENT. NO. DWG NO. TS 192			
TOLS. 1/64		SCALE			
ANGLES 0°-30'		ISSUE A			
MATERIAL		MATERIAL			
FINISH		FINISH			
(SK169A)		FINISH			

NOTICE TO PERSONS RECEIVING THIS DRAWING
 THE TECHNICAL MATERIEL CORPORATION claims proprietary right in the material disclosed hereon. This drawing is issued in confidence for engineering information only and may not be reproduced or used to manufacture anything shown hereon without permission from THE TECHNICAL MATERIEL CORPORATION to the user. This drawing is loaned for mutual assistance and is subject to recall at any time.

APPLICATION			REVISIONS						
QTY	MODEL USED ON	ASSY NO.	LTR	DESCRIPTION	DATE	E.M.N.NO	DRAFT	CHKD	APPD
	RTIH-3		X	EXPERIMENTAL RELEASE	1/23/68			<i>[Signature]</i>	
			Ø	ORIG. RELEASE FOR PROD.	10/23/68	Ø	R.G.		



TS193-1 (MFR PART NO. 515-0012)

TS193-2 (MFR PART NO. 515-0050)

REF: FOR USE WITH DATA LAMP TMC P/N B1119
WITH RETAINER TMC P/N CUI67

UNLESS OTHERWISE SPECIFIED DIMENSIONS ARE IN INCHES AND INCLUDE CHEMICALLY APPLIED OR PLATED FINISHES	REQ'D	ITEM	PART NUMBER	DESCRIPTION	SYM.
DECIMALS FRACTIONS .X ± .05 TOLS. 1/64 .XX ± .01 ANGLES .XXX ± .005 0°-30°				LIST OF MATERIAL	
MATERIAL				THE TECHNICAL MATERIEL CORP. MAMARONECK, NEW YORK	
FINISH				SOCKET, DATA LAMP	
S401-153					
NOTICE TO PERSONS RECEIVING THIS DRAWING			SIZE	CODE IDENT. NO.	DWG NO.
THE TECHNICAL MATERIEL CORPORATION claims proprietary right in the material disclosed hereon. This drawing is issued in confidence for engineering information only and may not be reproduced or used to manufacture anything shown hereon without permission from THE TECHNICAL MATERIEL CORPORATION to the user. This drawing is loaned for mutual assistance and is subject to recall at any time.			A	82679	TS 193
			SCALE	NONE	SHEET
					OF
			ISSUE		

APPLICATION			REVISIONS						
QTY	MODEL USED ON	ASS'Y NO.	LTR	DESCRIPTION	DATE	E.M.N.NO	DRAFT	CHKD	APPD
	RTMU-4		A	RE DRAWN, PICT. ADD	3.8.69	12353	GE	TR	SD

3/8
REF

NOTE:
MOUNTING HARDWARE
TO BE SUPPLIED BY
MFR

1.018 REF

9/32 REF

3/32

REQ'D	ITEM	PART NUMBER	DESCRIPTION	SYM.
LIST OF MATERIAL				
			THE TECHNICAL MATERIEL CORP. MAMARONECK, NEW YORK	
			SOCKET, RELAY (RECTANGULAR)	

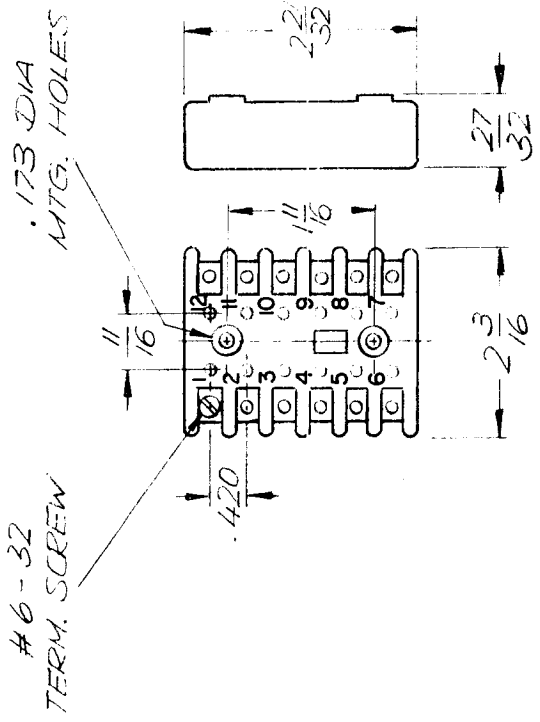
UNLESS OTHERWISE SPECIFIED DIMENSIONS ARE IN INCHES AND INCLUDE CHEMICALLY APPLIED OR PLATED FINISHES	DECIMALS	FRACTIONS
X ± .05		1/64
.XX ± .01		ANGLES
.XXX ± .005		0° .30'

MATERIAL	FINAL APPROVAL	DATE
	SD	3/25/69
FINISH	MECH. DES.	DATE
		3/25/69
	ELECT. DES.	DATE
	CHECKED	DATE
		3/25/69
	DRAWN	DATE
		3/21/69

NOTICE TO PERSONS RECEIVING THIS DRAWING	SIZE	CODE IDENT. NO.	DWG NO.	ISSUE
THE TECHNICAL MATERIEL CORPORATION claims proprietary right in the material disclosed hereon. This drawing is issued in confidence for engineering information only and may not be reproduced or used in manufacture anything shown hereon without permission from THE TECHNICAL MATERIEL CORPORATION to the user. This drawing is loaned for mutual assistance and is subject to recall at any time.	A	82679	TS 195	A
	SCALE	SHEET	OF	

APPLICATION			REVISIONS						
QTY	MODEL USED ON	ASS'Y NO.	LTR	DESCRIPTION	DATE	E.M.N.NO	DRAFT	CHKD	APPD
1	PALLA-10K AR148		X	EXP. RELEASE	9/24/64		KTT		
			Ø	ORIG RELEASE FOR PROD	4/16/64		CV		

TMC MFG CODE #: S 401 - 50A
MFG CATALOG #: 27340



REQ'D	ITEM	PART NUMBER	DESCRIPTION	SYM.
LIST OF MATERIAL				
THE TECHNICAL MATERIEL CORP. MAMARONECK, NEW YORK				
SOCKET, REFLAY				

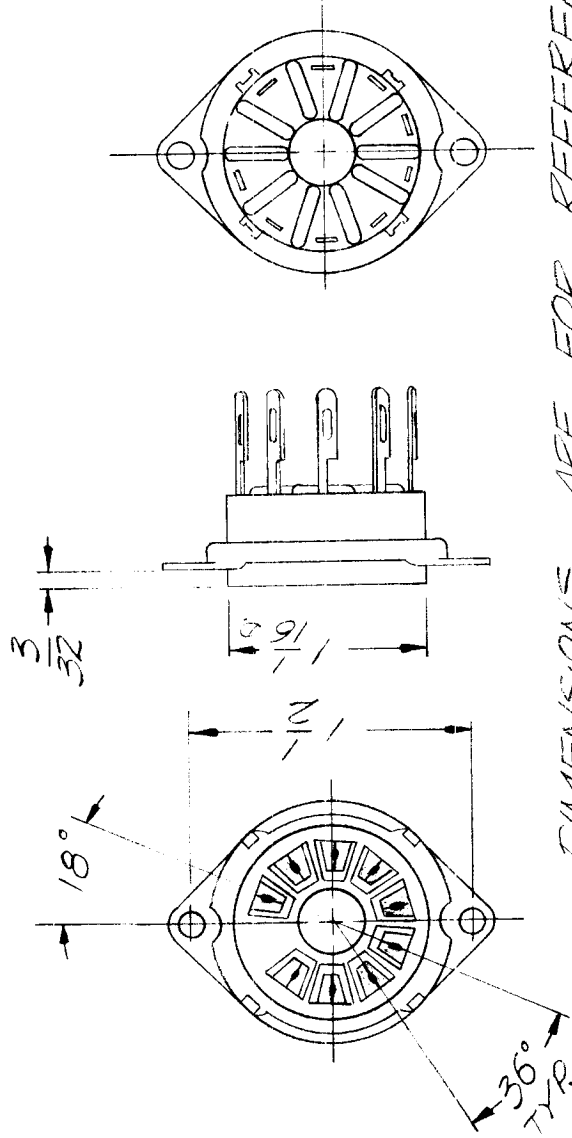
UNLESS OTHERWISE SPECIFIED DIMENSIONS ARE IN INCHES AND INCLUDE CHEMICALLY APPLIED OR PLATED FINISHES	SIZE	CODE IDENT. NO.	DWG NO.	ISSUE
DECIMALS X ± .05 XX ± .01 XXX ± .005 FRACTIONS 1/64 ANGLES 9°-.30'	A	82679	TS 196	Ø
MATERIAL	SCALE	→	SHEET	OF
FINISH				

NOTICE TO PERSONS RECEIVING THIS DRAWING
THE TECHNICAL MATERIEL CORPORATION claims proprietary right in the material disclosed hereon. This drawing is issued in confidence for engineering information only and may not be reproduced or used to manufacture anything shown hereon without permission from **THE TECHNICAL MATERIEL CORPORATION** to the user. This drawing is loaned for mutual assistance and is subject to recall at any time.

REVISIONS

APPLICATION

QTY	MODEL USED ON	ASSY NO.	LTR	DESCRIPTION	DATE	E.M.N.NO	DRAFT	CHKD	APPD
	FALA 10 K	AX5113	X	EXF RELEASE	14/70		GE		
			Ø	ORIG RELEASE FOR PROD	4/6/70		CV		



DIMENSIONS ARE FOR REFERENCE ONLY

NOTE: FOR USE WITH TUBE # 8233

UNLESS OTHERWISE SPECIFIED DIMENSIONS ARE IN INCHES AND INCLUDE CHEMICALLY APPLIED OR PLATED FINISHES	REQ'D	ITEM	PART NUMBER	DESCRIPTION	SYM.
DECIMALS .X ± .05 .XX ± .01 .XXX ± .005	LIST OF MATERIAL				
FRACTIONS 1/64 TOLS. ANGLES 0°-30°	THE TECHNICAL MATERIEL CORP. MAMARONECK, NEW YORK				
MATERIAL	SOCKET, 9 PIN				
FINISH	SCALE 1:1				
5401-321 (33-1811)	SIZE A				
	CODE IDENT. NO. DWG NO. 82679 75198				
	ISSUE				
	DRAWN EVALUPELIST 14.70				
	FINAL APPROVAL	DATE	DATE		
	MECH. DES.	DATE	DATE		
	ELECTR. DES.	DATE	DATE		
	CHECKED	DATE	DATE		
	DRAWN EVALUPELIST 14.70				
NOTICE TO PERSONS RECEIVING THIS DRAWING THE TECHNICAL MATERIEL CORPORATION claims proprietary right in the material disclosed hereon. This drawing is issued in confidence for engineering information only and may not be reproduced or used to manufacture anything shown hereon without permission from THE TECHNICAL MATERIEL CORPORATION to the user. This drawing is loaned for mutual assistance and is subject to recall at any time.					
			SHEET	OF	