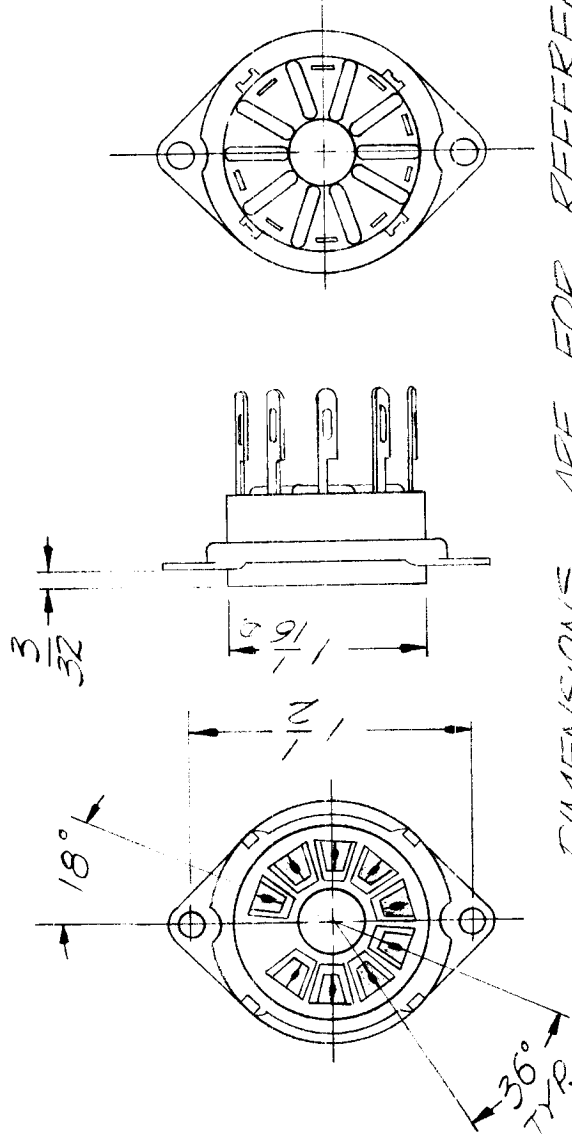


REVISIONS

APPLICATION

QTY	MODEL USED ON	ASS'Y NO.	LTR	DESCRIPTION	DATE	E.M.N.NO	DRAFT	CHKD	APPD
	FALA 10 K	AX5113	X	EXF RELEASE	14/70		GE		
			Ø	ORIG RELEASE FOR PROD	4/6/70		CV		



DIMENSIONS ARE FOR REFERENCE ONLY

NOTE: FOR USE WITH TUBE # 8233

UNLESS OTHERWISE SPECIFIED DIMENSIONS ARE IN INCHES AND INCLUDE CHEMICALLY APPLIED OR PLATED FINISHES	REQ'D ITEM	PART NUMBER	DESCRIPTION	SYM.
DECIMALS .X ± .05 .XX ± .01 .XXX ± .005	BUCETTI		LIST OF MATERIAL	
FRACTIONS 1/64 ANGLES 0°-30°	FINAL APPROVAL <i>[Signature]</i> DATE 4/6/70		THE TECHNICAL MATERIEL CORP. MAMARONECK, NEW YORK	
MATERIAL	MECH. DES. DATE 4/6/70		SOCKET, 9 PIN	
FINISH	ELECT. DES. DATE 4/6/70			
5401-321 (33-1811)	CHECKED DATE 4/6/70			
NOTICE TO PERSONS RECEIVING THIS DRAWING THE TECHNICAL MATERIEL CORPORATION claims proprietary right in the material disclosed hereon. This drawing is issued in confidence for engineering information only and may not be reproduced or used to manufacture anything shown hereon without permission from THE TECHNICAL MATERIEL CORPORATION to the user. This drawing is loaned for mutual assistance and is subject to recall at any time.	DRAWN EVALUPELLIST DATE 14.70			
	SIZE A	CODE IDENT. NO. 82679	DWG NO. 75198	ISSUE Ø
	SCALE 1:1		SHEET	OF