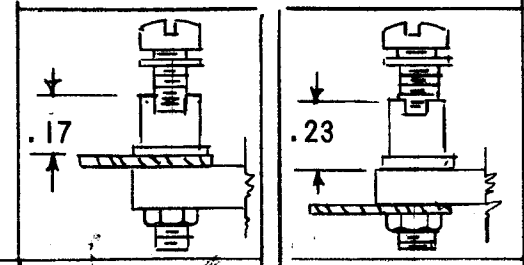


REVISIONS						
ZONE	LTR	DESCRIPTION	DATE	E.M.N.NO	DRAFT	CHKD APPD
	X	EXPERIMENTAL RELEASE	9/11/68		C.V.	<i>[Signature]</i>
	Ø	ORIG. RELEASE FOR PROD	11/19/68	Ø	R.G.	<i>[Signature]</i>

CHASSIS MOUNTING DATA



CONTACT DATA

TMC CODE	DESCRIPTION	CHASSIS THICK.	NO. OF CONTACTS	BELOW CHASSIS		ABOVE CHASSIS		DESC.
				CAT. NO.	TMC CODE	CAT. NO.	TMC CODE	
S	SOLDER CUP	1/16	10	HRT-1	1	HRT-2	2	OPEN ENTRY
			9	HRT-7	7	HRT-8	8	
			8	HRT-13	13	HRT-14	14	
E	EYELET	1/16	10	HRT-5	5	HRT-6	6	
			9	HRT-11	11	HRT-12	12	
			8	HRT-17	17	HRT-18	18	
S	SOLDER CUP	1/16	10	HRT-1K	1K	HRT-2K	2K	CLOSED ENTRY
			9	HRT-7K	7K	HRT-8K	8K	
			8	HRT-13K	13K	HRT-14K	14K	
E	EYELET	1/16	10	HRT-5K	5K	HRT-6K	6K	
			9	HRT-11K	11K	HRT-12K	12K	
			8	HRT-17K	17K	HRT-18K	18K	

SPECIFICATIONS

ELECTRICAL

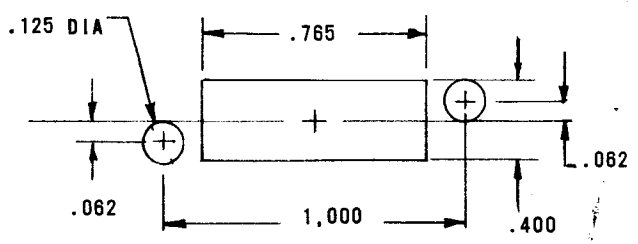
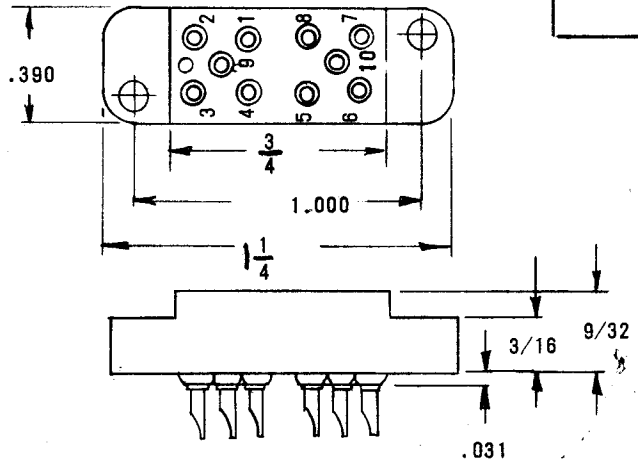
SOLDER CUP TYPE: ONE #20 AWG
 EYELET TYPE: TWO #20 AWG OR THREE #22 AWG
 CURRENT RATING: 3 AMPERES

WITHSTANDING VOLTAGE:

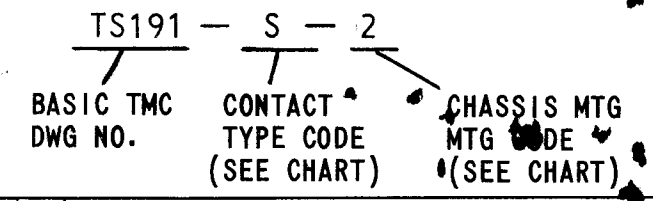
CONTACT TO CONTACT SEA LEVEL - 1500 VRMS MINIMUM
 CONTACT TO GROUND SEA LEVEL - 1500 VRMS MINIMUM
 CONTACT TO CONTACT 70,000 FT - 375 VRMS MINIMUM
 CONTACT TO GROUND 70,000 FT. - 375 VRMS MINIMUM

MECHANICAL

CREEPAGE BETWEEN CONTACTS: 7/64" MINIMUM
 AIR SPACE BETWEEN CONTACTS: 3/64" MINIMUM
 CONTACTS: SPRING TEMPER GRADE "A" PHOSPHOR BRONZE.
 GOLD PLATED OVER SILVER PLATE
 MOUNTING HARDWARE: SPECIAL STUDS, SCREWS, LOCKWASHERS, & NUTS
 TEMPERATURE RATINGS: -65°C TO +125°C
 WEIGHT OF SOCKET WITH MOUNTINGS: .26 OZ.



TMC PART NUMBER SHALL APPEAR IN THE FOLLOWING FORMAT:



REQ'D	ITEM	PART NUMBER	DESCRIPTION	SYM.
-------	------	-------------	-------------	------

LIST OF MATERIAL

THE TECHNICAL MATERIEL CORP.
 MAMARONECK, NEW YORK

SOCKET, RELAY (RECTANGULAR)

SIZE	CODE IDENT. NO.	DWG NO.	ISSUE
B	82679	TS 191	Ø
SCALE		SHEET	OF

RTTD-4		
QTY / UNIT	MODEL USED ON	ASS'Y NO.
APPLICATION		
CODE	S401-471	

NOTICE TO PERSONS RECEIVING THIS DRAWING
 THE TECHNICAL MATERIEL CORPORATION claims proprietary right in the material disclosed hereon. This drawing is issued in confidence for engineering information only and may not be reproduced or used to manufacture anything shown hereon without permission from THE TECHNICAL MATERIEL CORPORATION to the user. This drawing is loaned for mutual assistance and is subject to recall at any time.

UNLESS OTHERWISE SPECIFIED DIMENSIONS ARE IN INCHES AND INCLUDE CHEMICALLY APPLIED OR PLATED FINISHES

DECIMALS	FRACTIONS
.X ± .05	1/64
.XX ± .01	TOLS. ANGLES
.XXX ± .005	0° - 30'

FIN. APPROVAL	DATE
<i>[Signature]</i>	11/19/68
MECH. DES.	DATE
<i>[Signature]</i>	11/19/68
ELECT. DES.	DATE
<i>[Signature]</i>	11/19/68
CHECKED	DATE
<i>[Signature]</i>	11/19/68
DRAWN	DATE
<i>[Signature]</i>	11/20/68